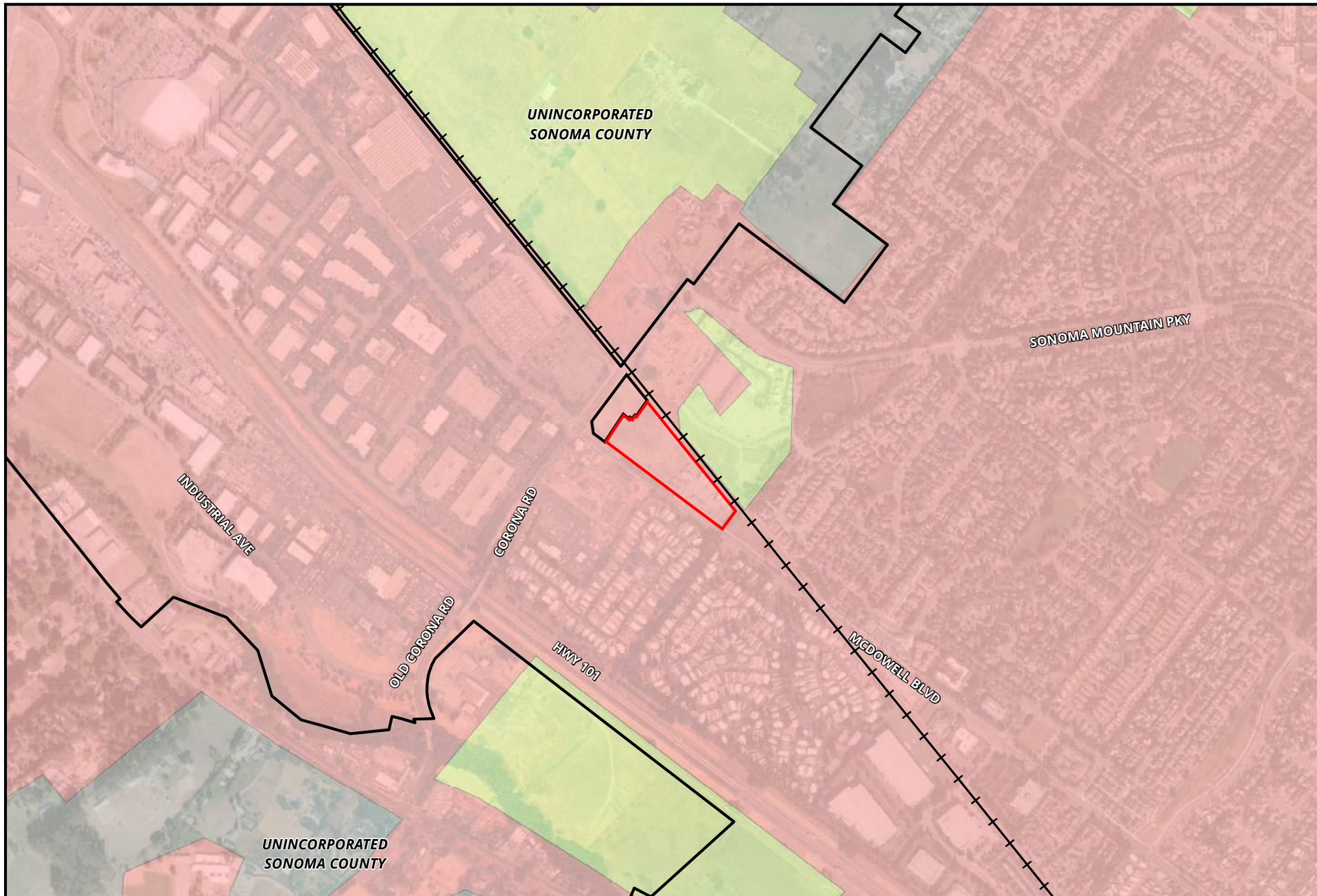


FIGURE B-1



CORONA ROAD RESIDENTIAL: IMPORTANT FARMLAND

- FARMLAND OF LOCAL IMPORTANCE (L)
- URBAN AND BUILT-UP LAND (D)
- OTHER LAND (X)
- PROJECT SITE
- REMAINDER PARCEL
- EXISTING RAIL LINE
- CITY OF PETALUMA

0 0.075 0.15 0.3 Miles

Data source: Sonoma County GIS; CA Dept of Conservation 2016; ESRI Basemap