

City of Petaluma, California

TRANSIT CENTER PARKING AND ADA IMPROVEMENTS
555 NORTH MCDOWELL BLVD

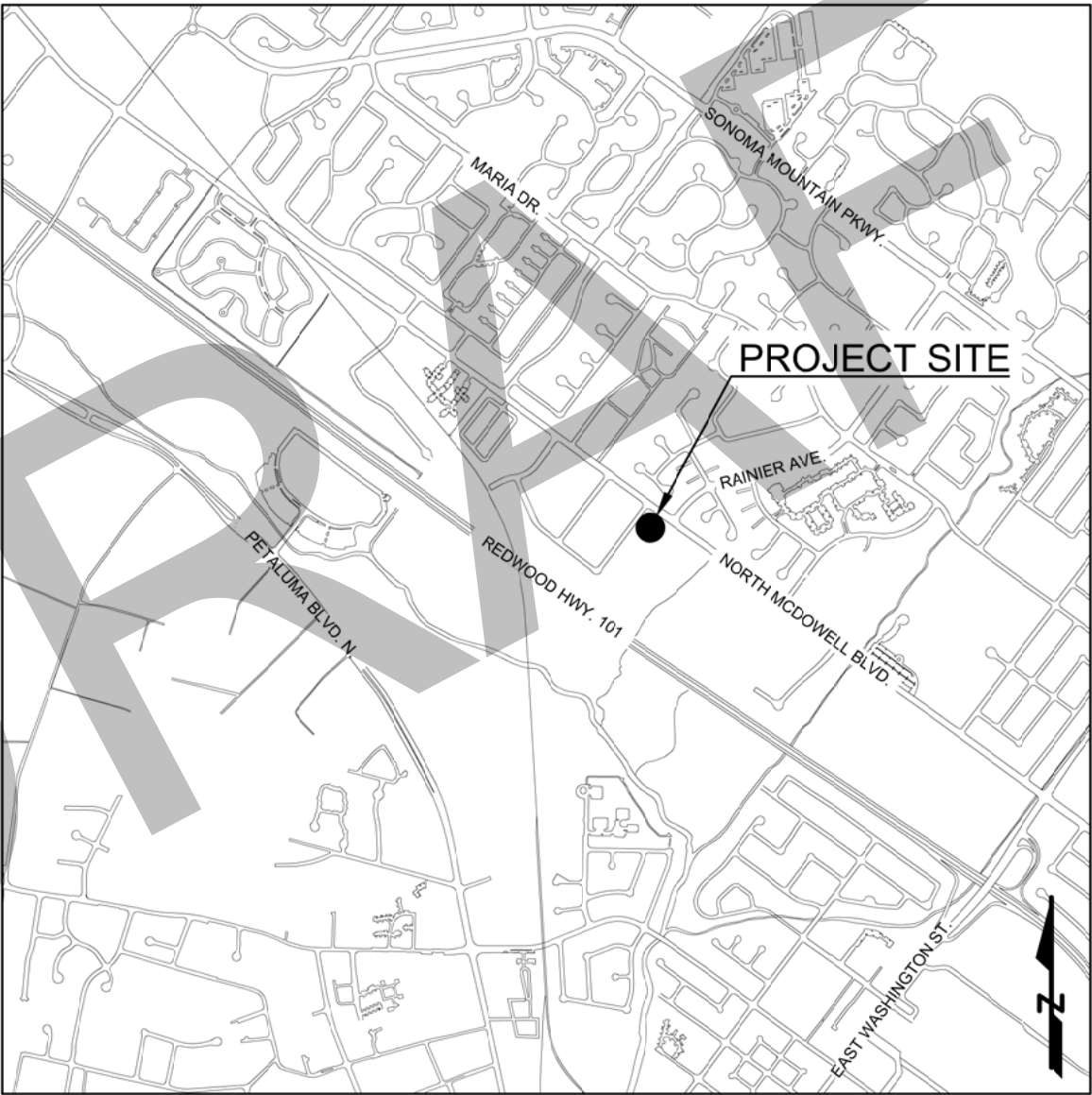


MAYOR
Teresa Barrett

COUNCIL MEMBERS
D'Lynda Fischer
Mike Healy
Gabe Kearney
Dave King
Kevin McDonnell
Kathy Miller

CITY MANAGER
Peggy Flynn

INTERIM DIRECTOR OF PUBLIC WORKS & UTILITIES
Jason Beatty



LOCATION MAP
SCALE: N.T.S.

- SHEET INDEX
- G1 COVER SHEET
 - G2 GENERAL NOTES AND PROJECT PLAN
 - G3 ABBREVIATIONS, SYMBOLS, AND REVISIONS
 - G4 EXISTING SITE SURVEY
 - C1 DEMOLITION AND IMPROVEMENTS PLAN
 - C2 GRADING AND SITE PLAN
 - C3 ADA RAMP PLAN AND PROFILE
 - D1 SECTIONS AND DETAILS #1
 - D2 SECTIONS AND DETAILS #2
 - D3 SECTIONS AND DETAILS #3

☐ ALL PROJECT PLANS HAVE BEEN PREPARED AND REVIEWED TO COMPLY WITH CURRENT AMERICANS WITH DISABILITIES ACT (ADA) REQUIREMENTS AND/OR THE CALIFORNIA BUILDING STANDARDS CODE (CBCS).

☐ THESE PROJECT PLANS CONTAIN ELEMENT(S) THAT ARE NOT "TECHNICALLY FEASIBLE" AND/OR CAN'T MEET THE APPLICABLE CBCS BECAUSE IT WOULD CREATE AN "UNREASONABLE HARDSHIP." PLEASE SEE THE WRITTEN ANALYSIS SUPPORTING THIS DETERMINATION FILED UNDER THE PROJECT FILE.

DESIGNED BY

SIGNATURE

DATE

APPROVED BY:

Kenneth E. Eichstaedt P.E. C42058
(Senior Civil Engineer)

DESIGNED BY:

Jonathan L. Sanglerat
(Assistant Engineer II)

	SIGNATURE	DATE
CITY ENGINEER		
ENGINEERING MANAGER		
FIRE MARSHAL		
PARKS		
PLANNING		
POLICE		
UTILITY MANAGER		

DATE: JANUARY 2020
DESIGNED BY: JLS
DRAWN BY: JLS
CHECKED BY: KE

PROJECT NO.
C65102009



CITY OF PETALUMA
PUBLIC WORKS & UTILITIES
202 N. McDowell Blvd., PETALUMA, CALIFORNIA 94954
PH. 707-778-4546 FAX. 707-778-4508



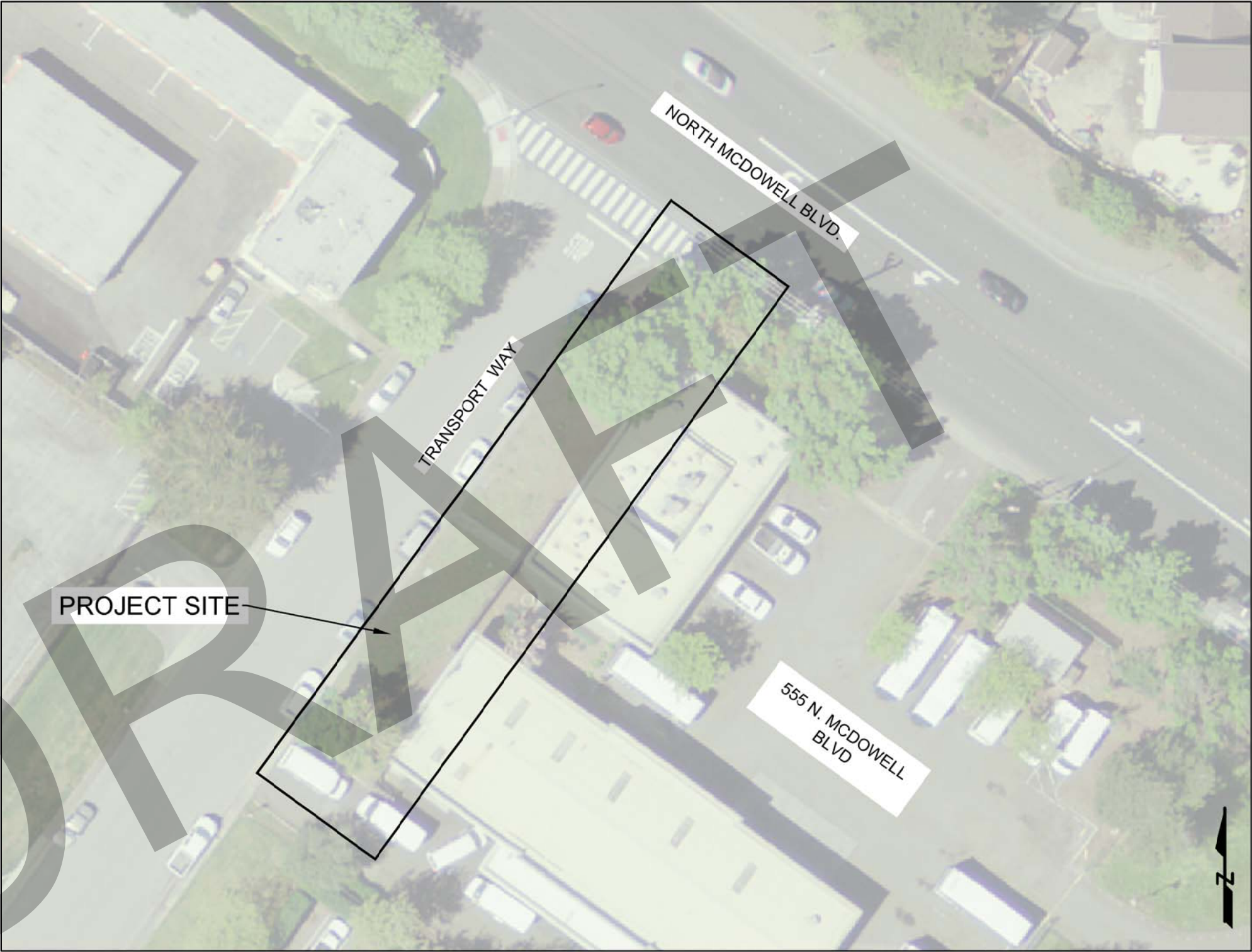
TRANSIT CENTER ADA IMPROVEMENTS
555 NORTH MCDOWELL BLVD

BRIEF DESCRIPTION OF WORK

THE INTENT OF THIS PROJECT IS TO PROVIDE INCREASED, ADA COMPLIANT, ACCESS TO THE PETALUMA TRANSIT CENTER. PROJECT IMPROVEMENTS INCLUDE AN ADA VAN PARKING SPACE, CURB RAMP, ACCESS RAMP, WALKWAY AND STAIRS, SIDEWALK, CURB AND GUTTERS, RETAINING WALL, SITE FENCE AND GATE, DRAIN BOX AND DRAIN PIPES, STRIPING, AND SIGNAGE. THESE IMPROVEMENTS WILL HELP TO PROVIDE BETTER ACCESS AND INCREASED SECURITY FOR THE TRANSIT CENTER. IN ADDITION, DEMOLITION AND SITE GRADING WILL BE A PART OF THIS PROJECT.

GENERAL NOTES

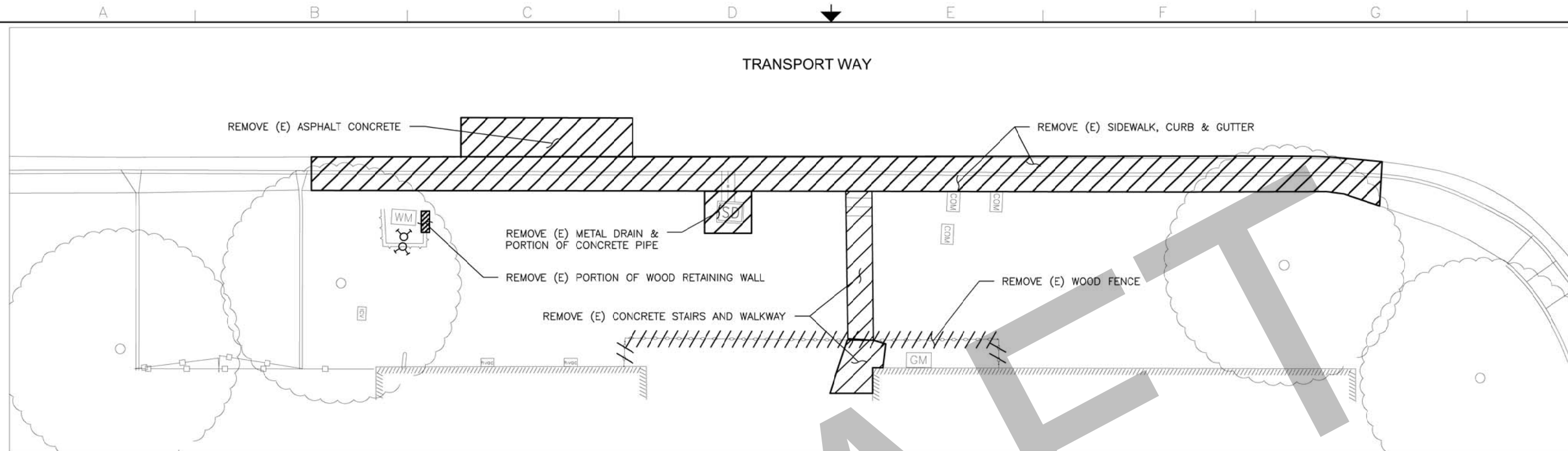
1. CONTRACTOR SHALL FIELD VERIFY THE HORIZONTAL AND VERTICAL LOCATION OF ALL EXISTING UTILITIES BY POT-HOLING OR OTHER DIRECT INSPECTION METHOD PRIOR TO COMMENCING WORK.
2. UNDERGROUND UTILITIES MAY NOT BE SHOWN ON THE PLANS AND MUST BE LOCATED BY THE CONTRACTOR PRIOR START OF PROPOSED WORK.
3. ALL FRAMES AND COVERS MUST BE ADJUSTED TO FINISH GRADE WITHIN 2 DAYS AFTER FINAL PAVING.
4. THE CONTRACTOR SHALL NOTE ALL APPROVED FIELD CHANGES AND OTHER OCCURRENCES AND SUBMIT A FULL SIZE COMPLETE CONSTRUCTION "RECORD DRAWING" SET NOTED AND DATED ON THE DRAWINGS TO THE PROJECT ENGINEER PRIOR TO ACCEPTANCE OF THE WORK.
5. IT IS THE RESPONSIBILITY OF THE CONTRACTOR TO ENSURE ALL MATERIAL AND WORKMANSHIP FULLY CONFORMS TO THE SPECIFICATIONS, STANDARDS AND ORDINANCES OF THE CITY OF PETALUMA, THE AMERICANS WITH DISABILITIES ACT (ADA) AND THE STATE OF CALIFORNIA.
6. ALL EROSION AND SEDIMENT CONTROL MATERIALS AND METHODS SHALL COMPLY WITH THE CALIFORNIA REGIONAL WATER QUALITY CONTROL BOARD, SAN FRANCISCO BAY REGION, EROSION AND SEDIMENT CONTROL MANUAL..
7. THE CONTRACTOR SHALL CONTACT UNDERGROUND SERVICE ALERT (USA) AND VERIFY UTILITY MARKINGS AT LEAST 72 HOURS PRIOR TO THE START OF ANY EXCAVATION. 1-800-227-2600
8. THE EXISTING CONDITIONS SURVEY (USED AS A BASE IMAGE ON SEVERAL PLAN SHEETS) WAS PREPARED BY WILLIS LAND SURVEYING.
 - 8.1. ALL DISTANCES INDICATED ON THE BASE SURVEY ARE SHOWN IN DECIMAL FEET.
 - 8.2. THE VERTICAL DATUM FOR THE SURVEY IS BASED UPON THE LOCAL CITY BENCHMARK - MONUMENT DISC IN MONUMENT WELL LOCATED ON MCDOWELL BOULEVARD NORTH AT THE INTERSECTION OF TRANSPORT WAY. ELEVATION OF SAID BENCHMARK IS ASSUMED TO BE 33.54 FEET NGVD29 AND ADJUSTED BY 2.70 FEET UP TO 36.24 FEET NAVD 88.



SURVEY CONTROL DATA

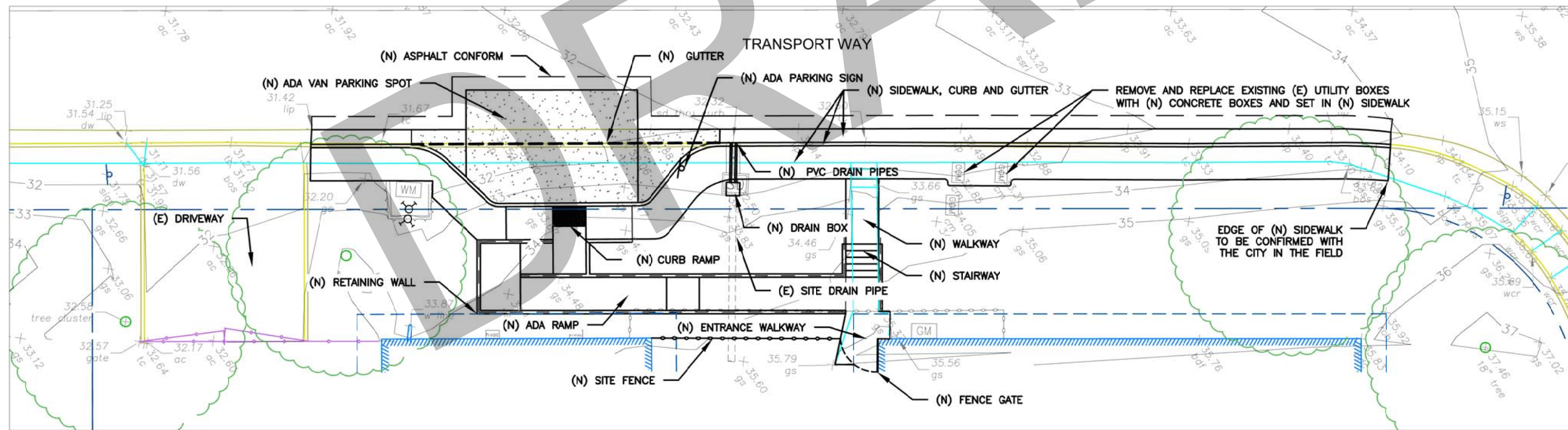
1. THESE PLANS WERE PREPARED USING COMPUTER ASSISTED, AERIAL PHOTOGRAMETRIC MAPPING. THE MERIDIAN AND GRID IS BASED ON THE CALIFORNIA COORDINATE SYSTEM ZONE II, NAD 1983.
2. VERTICAL DATUM: NAVD 1988.

DATE: JANUARY 2020	DESIGNED BY: JLS	DRAWN BY: JLS	CHECKED BY: KE
PROJECT NO. C65102009			
			
			
CITY OF PETALUMA PUBLIC WORKS & UTILITIES 202 N. McDowell Blvd., PETALUMA, CALIFORNIA 94954 PH. 707-778-4546 FAX. 707-778-4508			
TRANSIT CENTER ADA IMPROVEMENTS 555 NORTH MCDOWELL BLVD GENERAL NOTES AND PROJECT PLAN			
SHEET G2			
2 OF 10			



DEMOLITION PLAN

NO SCALE



IMPROVEMENTS PLAN

NO SCALE

DATE: JANUARY 2020
DESIGNED BY: JLS
DRAWN BY: JLS
CHECKED BY: KE

PROJECT NO.
C65102009



CITY OF PETALUMA
PUBLIC WORKS & UTILITIES
202 N. McDowell Blvd., PETALUMA, CALIFORNIA 94954
PH. 707-778-4546 FAX. 707-778-4508



TRANSIT CENTER ADA IMPROVEMENTS
555 NORTH MCDOWELL BLVD
DEMOLITION AND IMPROVEMENTS PLAN

SHEET

C1

5 OF 10