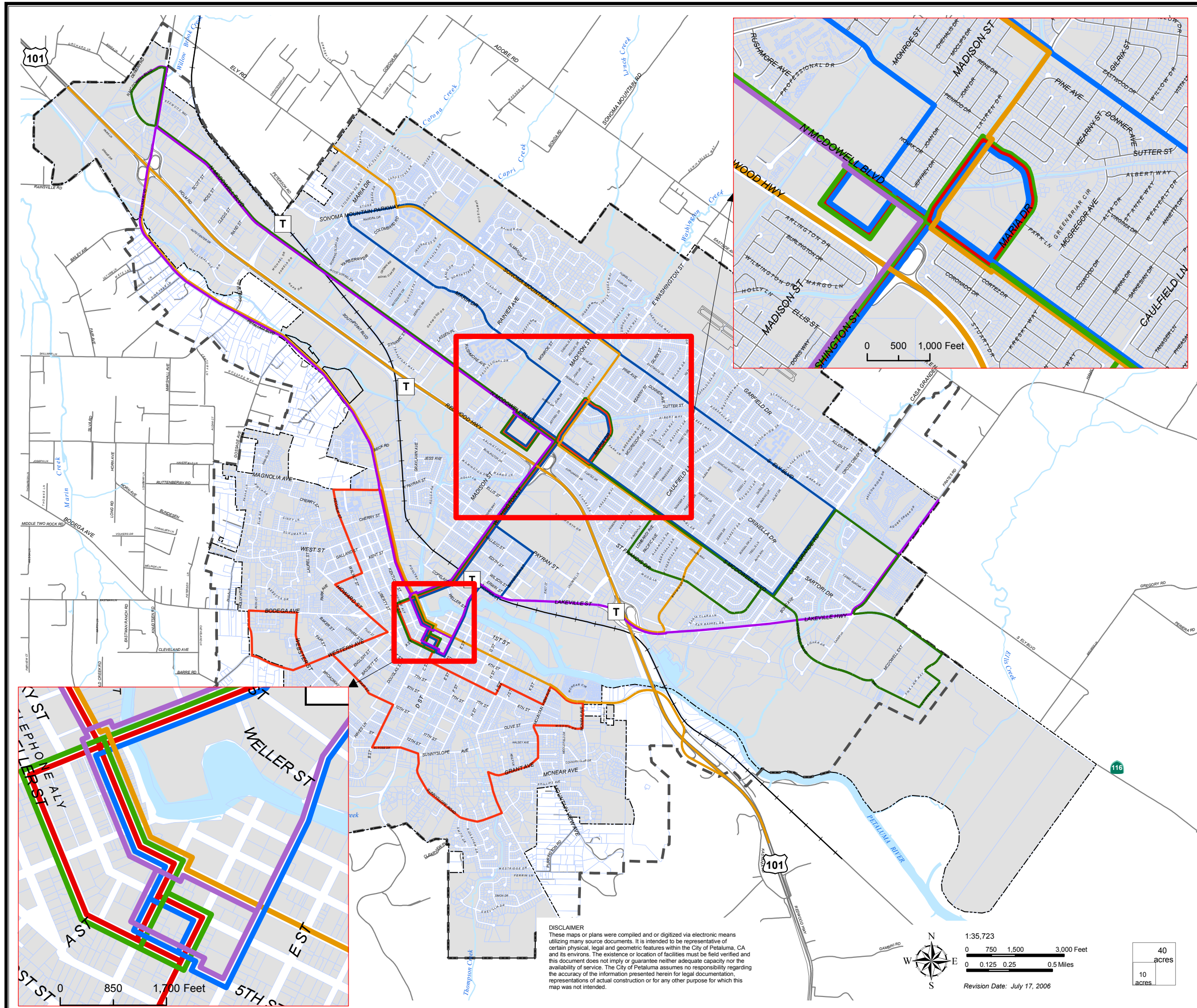


Figure 3.2-2

EXISTING TRANSIT ROUTES AND PLANNED IMPROVEMENTS

Petaluma General Plan 2025



LEGEND

- Route 1 Cherry Valley
- Route 2 McDowell North/South
- Route 3 Ely North/South
- Golden Gate Transit
- Sonoma County Transit
- SMART Rail (proposed)
- T Rail/Transit

BOUNDARIES

- City Limits
- Urban Growth Boundary (UGB)
- ~ Rivers and Creeks

DISCLAIMER
 These maps or plans were compiled and/or digitized via electronic means utilizing many source documents. It is intended to be representative of certain physical, legal and geometric features within the City of Petaluma, CA and its environs. The existence or location of facilities must be field verified and this document does not imply or guarantee neither adequate capacity nor the availability of service. The City of Petaluma assumes no responsibility regarding the accuracy of the information presented herein for legal documentation, representations of actual construction or for any other purpose for which this map was not intended.

1:35,723
 0 750 1,500 3,000 Feet
 0 0.125 0.25 0.5 Miles
 Revision Date: July 17, 2006

40
acres
10
acres



City of Petaluma
 11 English Street
 Petaluma, CA 94952
 generalplan@ci.petaluma.ca.us

