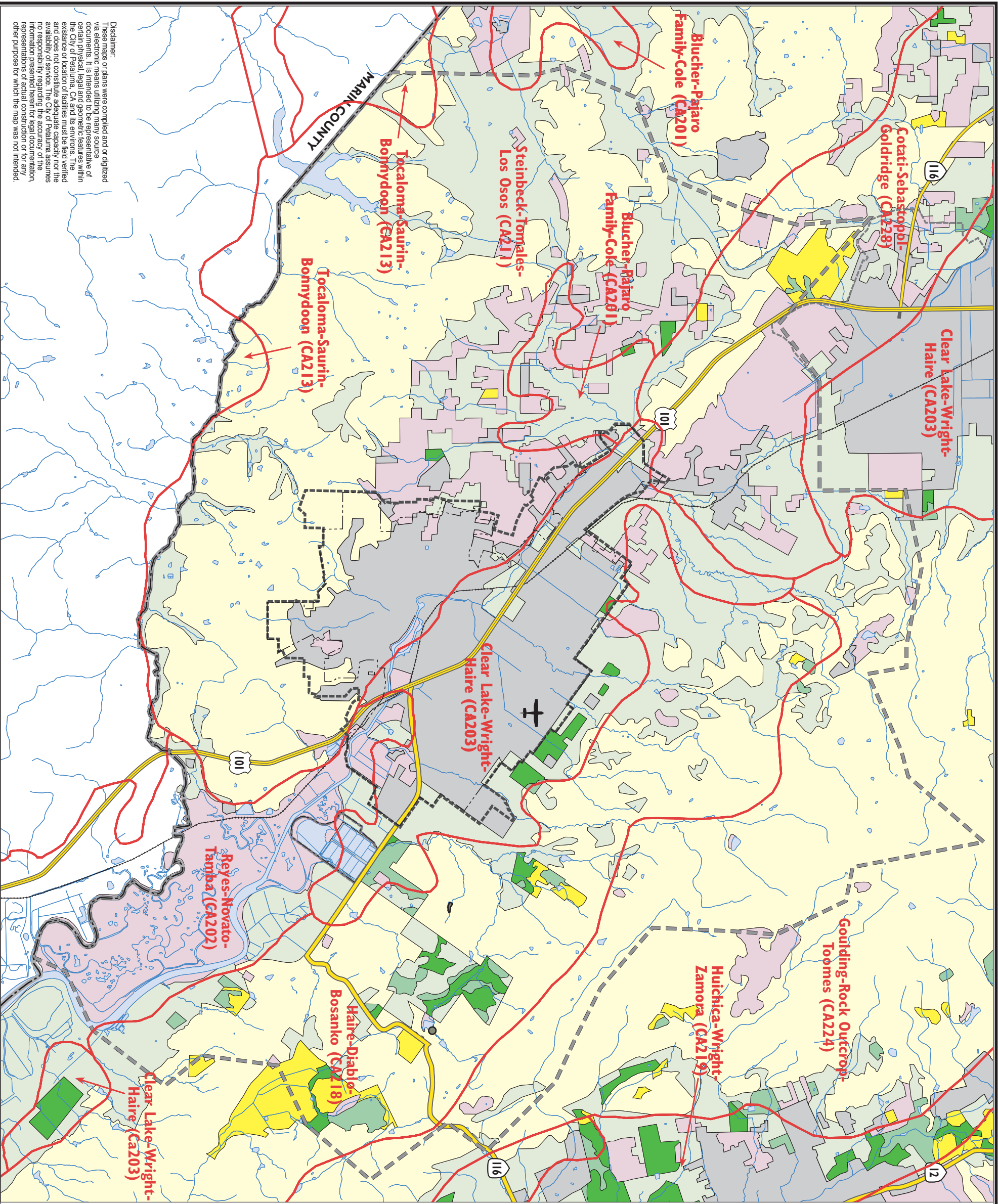


Figure 3.7-3

FARMLAND AND SOILS

Petaluma General Plan 2025 EIR

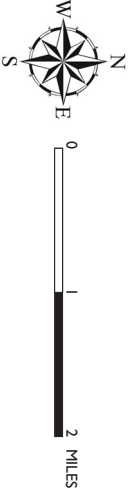


- Prime Farmland
- Farmland of Statewide Importance
- Farmland of Local Importance
- Unique Farmland
- Grazing
- Other Land
- Urban
- Soil Series

- Planning Referral Area
- Urban Growth Boundary
- City Limits
- County Line
- River and Creeks

Source: California Department of Conservation
Farmland Mapping and Monitoring
Program, 1998; NRCS, Generalized
Statewide Survey, 1994.

Revised 30 September 2002



City of Petaluma
11 English Street
Petaluma, CA 94952
generalplan@ci.petaluma.ca.us

Disclaimer:
These maps or plans were compiled and/or digitized
via electronic means utilizing many source
documents. It is intended to be representative of
certain physical, legal and geometric features within
the City of Petaluma, CA and its environs. The
existence or location of features must be field verified
and liable of course. The City of Petaluma assumes
no responsibility regarding the accuracy of the
information presented herein for legal documentation,
representations of actual construction or for any
other purpose for which the map was not intended.