



CITY OF PETALUMA

POST OFFICE BOX 61
PETALUMA, CA 94953-0061

May 21, 2020

Teresa Barrett
Mayor

D'Lynda Fischer
Mike Healy
Gabe Kearney
Dave King
Kevin McDonnell
Kathy Miller
Councilmembers

Subject: Request for Quotation (RFQ)
Communication Equipment
Traffic Signal Timing Communication Upgrade Project

The City of Petaluma is seeking a quotation for communication equipment for the Traffic Signal Timing Communication Upgrade project. The scope includes new radio equipment and ethernet switches to upgrade the communications along Petaluma Boulevard North, McDowell, East Washington and Sonoma Mountain Parkway Corridors.

Additional information and addendums can be found at <https://cityofpetaluma.org/bid-opportunities-2/> or email to Jeff Stutsman at Jstutsman@cityofpetaluma.org.

Public Works & Utilities

City Engineer
11 English Street
Petaluma, CA 94952
Phone (707) 778-4303

Environmental Services

Ellis Creek Water
Recycling Facility
3890 Cypress Drive
Petaluma, CA 94954
Phone (707) 776-3777
Fax: (707) 656-4067

Parks & Facility Maintenance

840 Hopper St. Ext.
Petaluma, CA 94952
Phone (707) 778-4303
Fax (707) 206-6065

Transit Division

555 N. McDowell Blvd.
Petaluma, CA 94954
Phone (707) 778-4421

Utilities & Field Operations

202 N. McDowell Blvd.
Petaluma, CA 94954
Phone (707) 778-4546
Fax (707) 206-6034

E-Mail: publicworks@cityofpetaluma.org

Attachments:

Attachment A: Communication List
Attachment B: Construction Plans (for reference only)

Bid Date

Emailed proposals will be accepted until Thursday June 4, 2020 at 2:00pm and should be emailed to Jstutsman@cityofpetaluma.org

If you need further information, please call me at (707) 776-3673 or e-mail at Jstutsman@cityofpetaluma.org.

Sincerely,

Jeff Stutsman, P.E., T.E.
Traffic Engineer

c: Project file

ATTACHMENT A -COMMUNICATION EQUIPMENT LIST

Equipment List

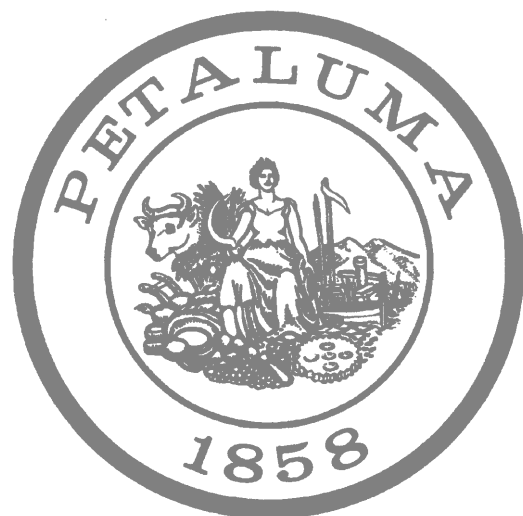
Product Description	Qty	Unit
Hardened Ethernet Switch, (-40°C - 75°C) Managed Light Layer 3 Gigabit Ethernet Switch with 8-port 10/100/1000BASE-T(X) + 2-port 100/1000BASE SFP, DIN-rail mounted, Power Input 12 - 48VDC, Etherwan P/N EX73922E-0VB	15	EA
DIN Rail Power Supply, AC to DC Din Rail, 24V, 1.7Amp, 40.8 Watt, Industrial Power Supply for EX73922E-0VB Ethernet Switch.	15	EA
Vertical Mounting Bracket, Z-shaped Rack Mount for Use With DIN-rail Switches (EX78900/78000/73900), Black, EtherWAN P/N KR-BKZDIN	15	EA
SINGLE Encom Radio 5.8Ghz Radio System, 500 Mbps throughout with integrated 19dBi antenna and external conductors, embedded GPS, RSSI and Power Indicators, mounting bracket, Audio Alignment Tool and PoE injector, Encom P/N E-Lite 450 INT-NC. (No CAT5e included).	6	EA
DUAL Radio: 58/58 2x500 Mbps throughout with 1 integrated antenna and external connectors. Includes: 2 "N" female connectors, embedded GPS, RSSI and power indicators, mounting bracket, Audio Alignment tool and PoE Injector, Encom P/N E-Lite 450 INT- Dual-NC. (No CAT5e included)	8	EA
Antenna kit for E-Lite EXT /Energy EXT series. 20dB flat panel dual polarity. Includes 2x 10ft jumper cables and mounting hardware. Encom P/N AN-230K	8	EA
170E Internal CPU Board for Model 170 Traffic Signal Controller, GDI P/N Model 170-Etherport Card	14	EA
Intersection Turn-On Support & Network Calibration, Project rate for Corridor #2, McDowell/Washington Corridor. Device mounting, Network connection cabling and installation to be provided by others.	1	LS

ATTACHMENT B – CONSTRUCTION PLANS (REFERENCE ONLY)

City of Petaluma, California

SIGNAL AND COMMUNICATION UPGRADE

PROJECT NUMBER: TBD

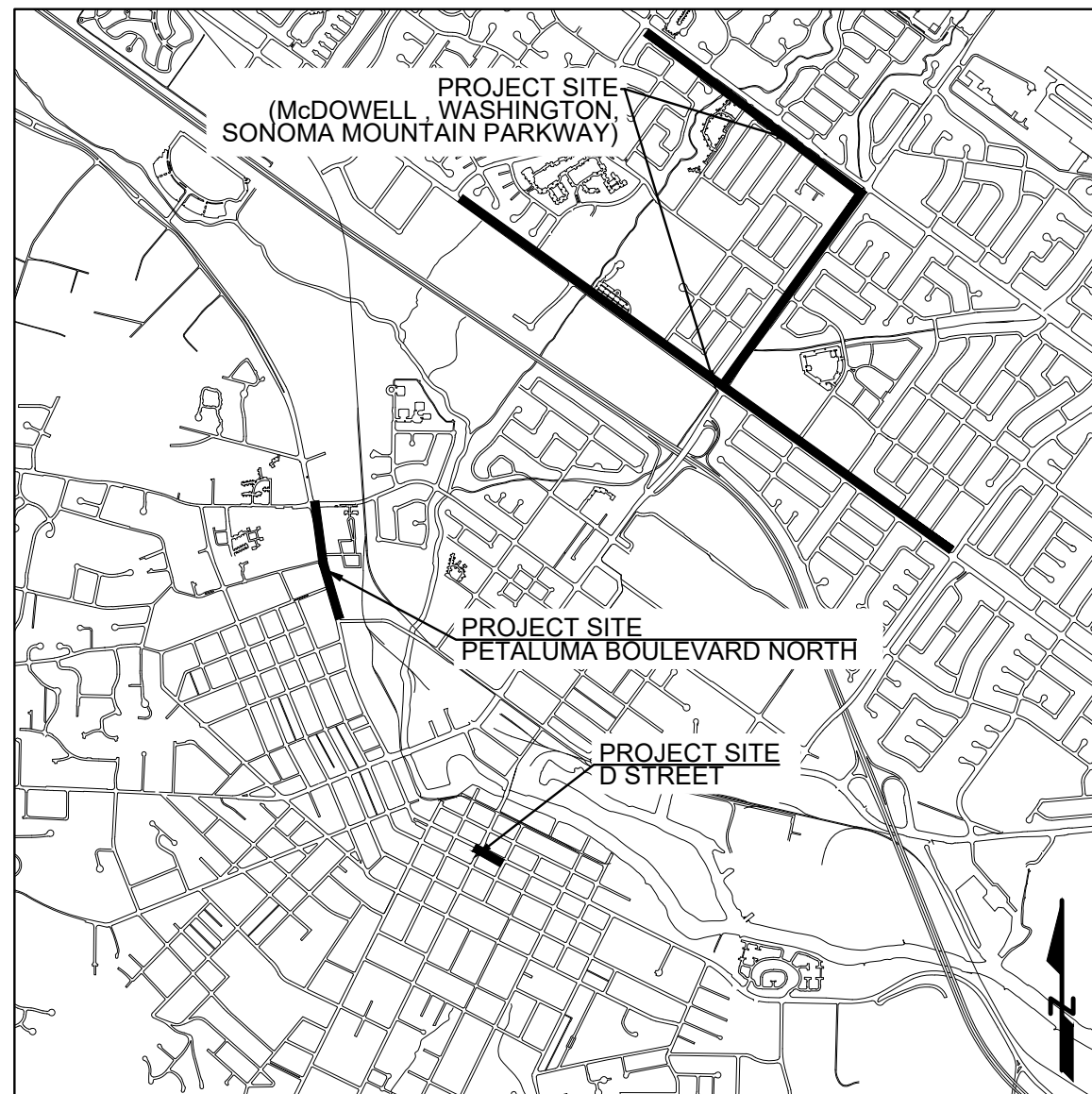


MAYOR
Teresa Barrett

COUNCIL MEMBERS
DLynda Fischer
Mike Healy
Dave King
Gabe Kearney
Kathy Miller
Kevin McDonnell

CITY MANAGER
Peggy Flynn

DIRECTOR OF PUBLIC WORKS & UTILITIES
Jason Beatty, P.E.



LOCATION MAP
SCALE: N.T.S.

RECORD PLAN

I _____ HEREBY STATE THAT THESE RECORD PLAN CHANGES ARE COMPLETE FROM INFORMATION FURNISHED BY THE PROJECT CONTRACTOR, SOILS ENGINEER AND MY OFFICE. I HEREBY STATE THAT TO THE BEST OF MY KNOWLEDGE THE THE WORK WAS DONE IN ACCORDANCE WITH THE FINAL APPROVED PLANS. THE ENGINEER AND THE CITY WILL NOT BE RESPONSIBLE FOR ANY ERRORS OR OMISSIONS WHICH HAVE BEEN INCORPORATED INTO THIS DOCUMENT AS A RESULT. FIELD VERIFICATION OF CRITICAL FACTS AND DATA SHOULD BE MADE IF THESE DOCUMENTS ARE TO BE USED AS A BASIS FOR FUTURE WORK. ENGINEER'S SIGNATURE _____ DATE: _____

SHEET INDEX

- G1 COVER SHEET
- G2 ABBREVIATIONS, SYMBOLS, REVISIONS
- C1 D STREET
- C2 PETALUMA BOULEVARD NORTH
- C3 McDOWELL BOULEVARD NORTH, WASHINGTON STREET, AND SONOMA MOUNTAIN PARKWAY

ALL PROJECT PLANS HAVE BEEN PREPARED AND REVIEWED TO COMPLY WITH CURRENT AMERICANS WITH DISABILITIES ACT (ADA) REQUIREMENTS AND/OR THE CALIFORNIA BUILDING STANDARDS CODE (CBCS).

THESE PROJECT PLANS CONTAIN ELEMENT(S) THAT ARE NOT "TECHNICALLY FEASIBLE" AND/OR CAN'T MEET THE APPLICABLE CBCS BECAUSE IT WOULD CREATE AN "UNREASONABLE HARDSHIP." PLEASE SEE THE WRITTEN ANALYSIS SUPPORTING THIS DETERMINATION FILED UNDER THE PROJECT FILE.

DESIGNED BY: Jeff Stutzman DATE: 5/5/2020
SIGNATURE _____

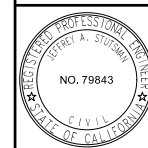
APPROVED BY: Jason Beatty DATE: 5/5/2020
Jason Beatty P.E. C77694
Director of Public Works and Utilities

DESIGNED BY: Jeff Stutzman DATE: 5/5/2020
Jeff Stutzman P.E. C78943
Traffic Engineer

	SIGNATURE	DATE
CITY ENGINEER		
ENGINEERING MANAGER		
FIRE MARSHAL		
PARKS		
PLANNING		
POLICE		
UTILITY MANAGER		

DATE: JULY -2020
DESIGNED BY: JS
DRAWN BY: JS
CHECKED BY: JB

PROJECT NO.
TBD



CITY OF PETALUMA
PUBLIC WORKS & UTILITIES
202 N. McDowell Blvd., PETALUMA, CALIFORNIA, 94954
PH. 707-778-4546 FAX. 707-778-4508

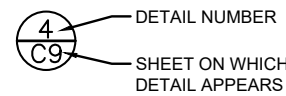


SIGNAL AND COMMUNICATION UPGRADES
COVER SHEET

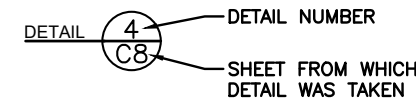
SHEET
G1
1 of 5

DETAIL NUMBERING

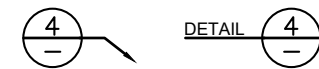
DWG. WHERE DETAIL IS TAKEN:



DWG. WHERE DETAIL APPEARS:

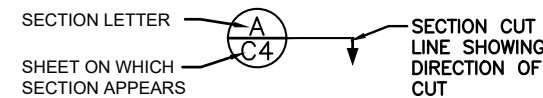


IF DETAIL APPEARS ON THE SAME DWG. IT IS TAKEN FROM:

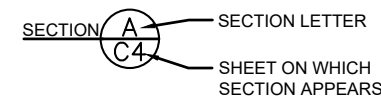


SECTION NUMBERING

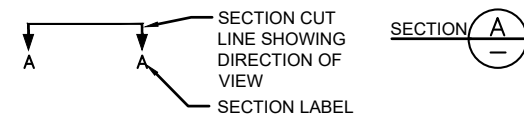
DWG. WHERE SECTION IS TAKEN:



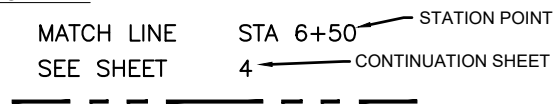
DWG. WHERE SECTION APPEARS:



IF SECTION APPEARS ON THE SAME DWG. IT IS TAKEN FROM:



MATCH LINE



ABBREVIATIONS

AB	AGGREGATE BASE	IRR	IRRIGATION
ABND	ABANDONED	JT	JOINT TRENCH
AC	ASPHALTIC CONCRETE	LG	LIP OF GUTTER
ACP	ASBESTOS CEMENT PIPE	MH	MANHOLE
CDF	CONTROL DENSITY FILL	MON	MONUMENT
CI	CAST IRON	PCC	PORTLAND CEMENT CONCRETE
CIPP	CURED IN PLACE PIPE	PL	PLASTIC
CL	CENTERLINE	PVC	POLYVINYL CHLORIDE
CMP	CORRUGATED METAL PIPE	RC	RELATIVE COMPACTION
CO	CLEAN OUT	RCP	REINFORCED CONCRETE PIPE
CR	CURB RETURN	SS	SANITARY SEWER
DIP	DUCTILE IRON PIPE	SQFT	SQUARE FEET
EG	EXISTING GRADE	STA	STATION
EL	ELEVATION	STL	STEEL
ELEC	ELECTRIC	SD	STORM DRAIN
EP	EDGE OF PAVEMENT	SL	STREET LIGHT
EX	EXISTING	TEL	TELEPHONE
FC	FACE OF CURB	TC	TOP OF CURB
FDC	FIRE DEPT CONNECTION	TP	TOP OF PIPE
FG	FINISH GRADE	TV	TV CABLE
FH	FIRE HYDRANT	TYP	TYPICAL
FL	FLOW LINE	UTILP	UTILITY POLE
FO	FIBER OPTIC CABLE	VCP	VITRIFIED CLAY PIPE
G	GAS	W	WATER
HDPE	HIGH DENSITY POLYETHYLENE	WS	WATER SERVICE
INV	INVERT		

SYMBOLS

PROPOSED	EXISTING	
		AIR RELIEF VALVE
		BLOWOFF
		FIRE HYDRANT
		VALVE
		ZONE VALVE
		REDUCER
		CLEAN OUT
		MANHOLE
		WATER METER
		CATCH BASIN
		CATCH BASIN W/ GALLERY
		INLET
		END CAP
		UTILITY POLE
		UTILITY BOX
		MONUMENT
		ADDRESS
		6" SS SEWER MAIN AND LATERAL
		6" SS SEWER LATERAL TAP ACTIVE
		6" SS SEWER LATERAL TAP CAPPED
		8" W WATER MAIN
		12" SD STORM DRAIN
		E ELECTRIC CABLE
		G GAS MAIN
		TEL TELEPHONE CABLE
		TV TV CABLE
		SL STREET LIGHT AND CABLE
		C13 CONSTRUCTION SIGN
		R/W RIGHT OF WAY LINE
		TO BE ABANDONED
		TO BE REMOVED
		B1 BORE LOCATION

REDORD DRAWING REFERENCE

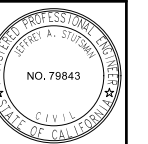
NO.	DATE	DESCRIPTION	BY

PROJECT RESOURCE DATA (FOR CITY USE)

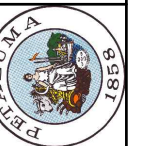
PROJECT START	
PROJECT END	
PROJECT CONTRACTOR	
CONTRACTOR'S SUPER.	
UTILITY CONT.	
UTILITY CONT.	
UTILITY CONT.	
SEWER PIPE, MH, CO	
STORM DRAIN PIPE, INLET	
WATER PIPE, VALVES, HDY.	
PROJECT MANAGER	
PROJECT INSPECTOR	
OTHER	

DATE: JULY -2020
 DESIGNED BY: JS
 DRAWN BY: JS
 CHECKED BY: JB

PROJECT NO.
 TBD



CITY OF PETALUMA
 PUBLIC WORKS & UTILITIES
 202 N. McDowell Blvd., PETALUMA, CALIFORNIA, 94954
 PH. 707-778-4546 FAX. 707-778-4508



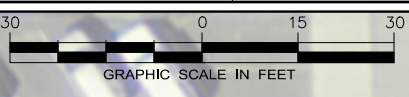
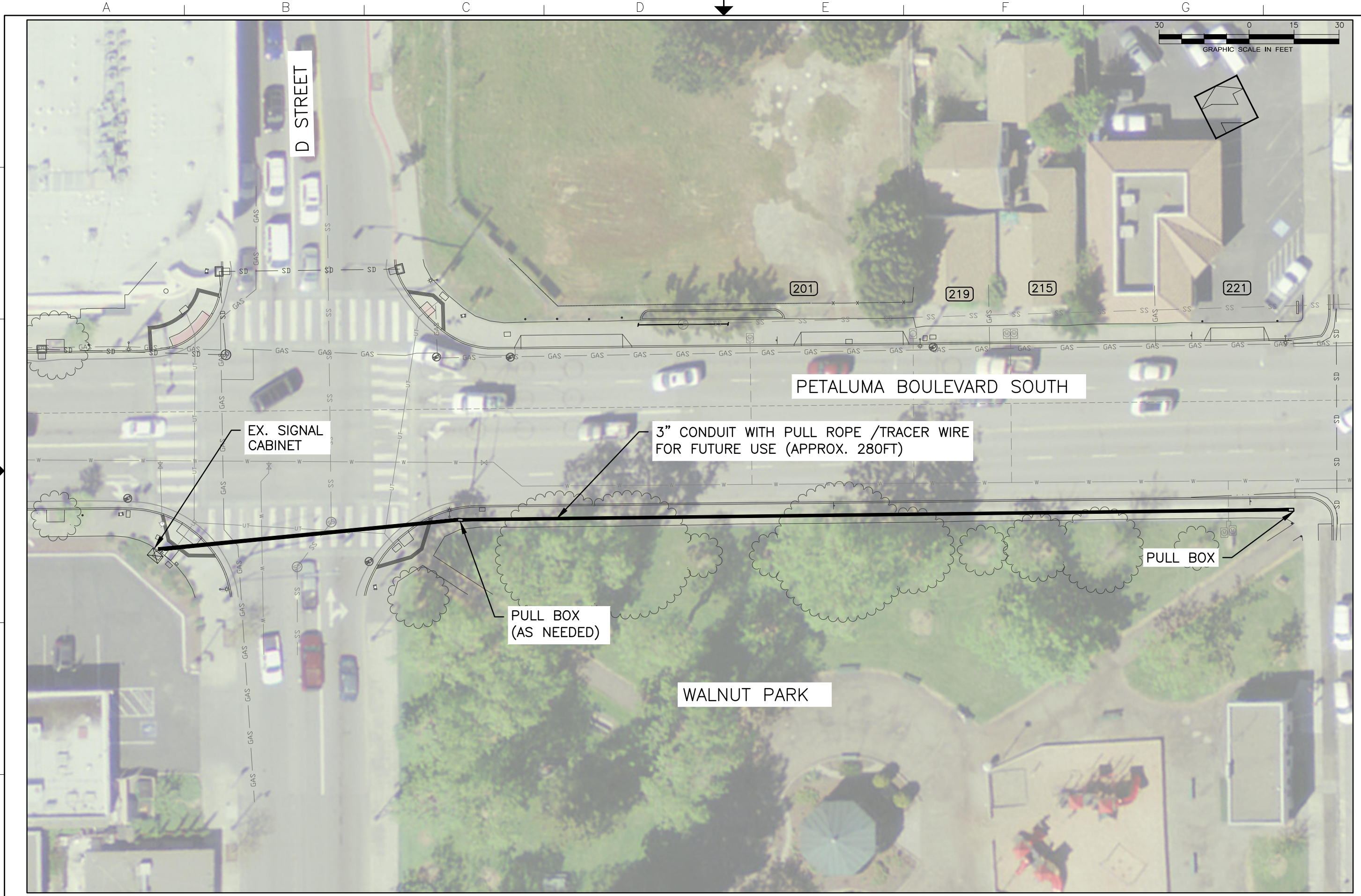
SIGNAL AND COMMUNICATION UPGRADES

ABBREVIATION SYMBOLS AND REVISIONS

SHEET

G2

2 of 5



DATE: JULY -2020
 DESIGNED BY: JS
 DRAWN BY: JS
 CHECKED BY: JB

PROJECT NO.
 TBD



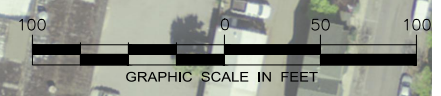
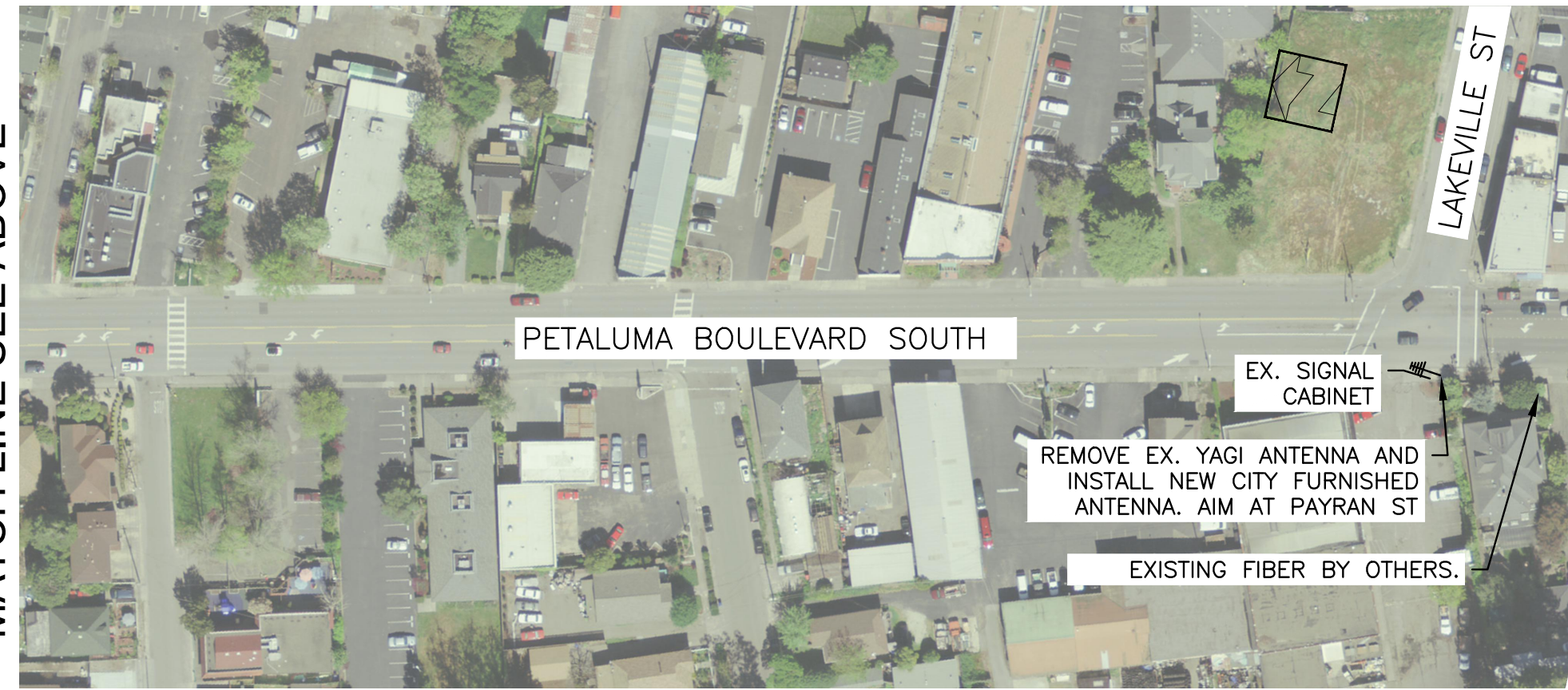
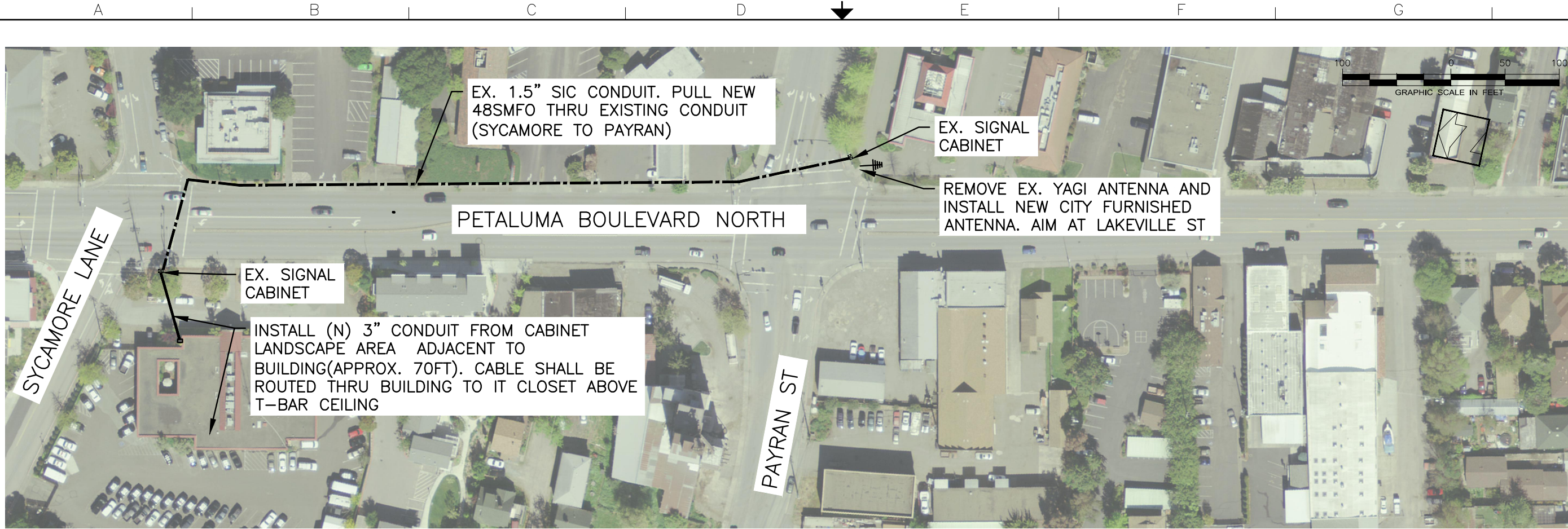
CITY OF PETALUMA
 PUBLIC WORKS & UTILITIES
 202 N. McDowell Blvd., PETALUMA, CALIFORNIA, 94954
 PH. 707-778-4546 FAX. 707-778-4508



SIGNAL AND COMMUNICATION UPGRADES
 PETALUMA BLVD S



SHEET
C1
 3 of 5

PLAN



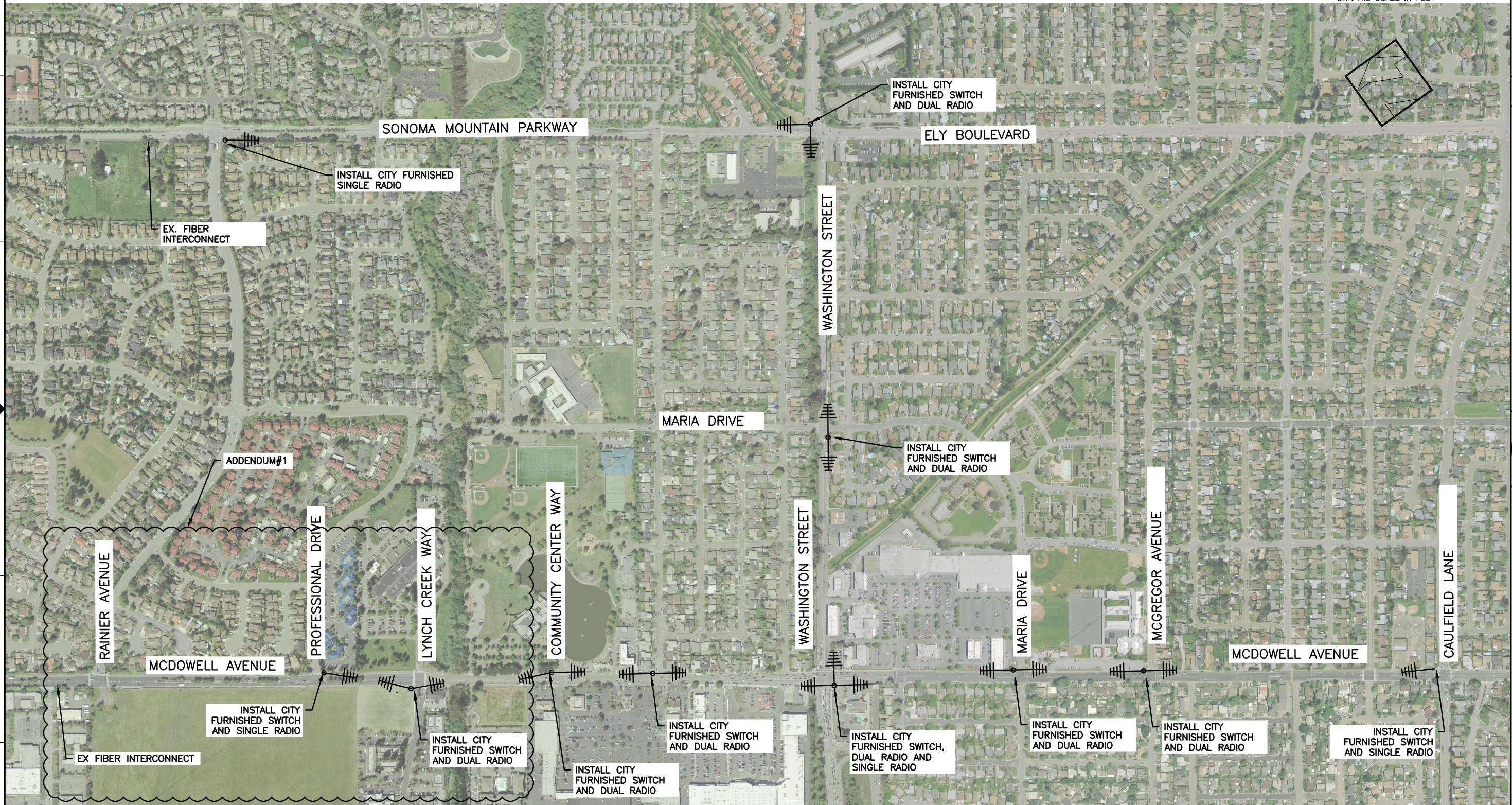
MATCH LINE SEE BELOW

MATCH LINE SEE ABOVE

DATE: JULY -2020	DESIGNED BY: JS	DRAWN BY: JS	CHECKED BY: JB
PROJECT NO. TBD			
			
CITY OF PETALUMA PUBLIC WORKS & UTILITIES 202 N. McDowell Blvd., PETALUMA, CALIFORNIA, 94954 PH. 707-778-4546 FAX. 707-778-4508			
			
SIGNAL AND COMMUNICATION UPGRADES			
PETALUMA BLVD N			
SHEET			
C2			
4 of 5			



A B C D E F G H



2
3
4
5
6

DATE: JULY -2020
DESIGNED BY: JS
DRAWN BY: JS
CHECKED BY: JB

PROJECT NO.
TBD



CITY OF PETALUMA
PUBLIC WORKS & UTILITIES
202 N. McDowell Blvd., PETALUMA, CALIFORNIA, 94954
PH. 707-778-4546 FAX. 707-778-4508



SIGNAL AND COMMUNICATION UPGRADES
MCDOWELL BLVD, WASHINGTON AND SMP

SHEET
C3
5 of 5

ADDENDUM #1
5/14/2020