



CITY OF PETALUMA

POST OFFICE BOX 61
PETALUMA, CA 94953-0061

Teresa Barrett
Mayor

D'Lynda Fischer
Mike Healy
Gabe Kearney
Dave King
Kevin McDonnell
Kathy Miller
Councilmembers

September 25, 2020

To: All Planholders (via email)

Payran Lift Station Rehabilitation
City Project No. C66501519

ADDENDUM NO. 2

CLARIFICATIONS TO CONTRACTORS

1. The Dry Weather and Wet Weather flows for the pump station are 0.17 MGD and 0.55 MGD accordingly. The Contractor shall supply bypass pumping system with specifications shown in the contract documents. All pump station shutdown periods shall be approved by the City.
2. The Contractor will be allowed to use the pump station's existing PG&E power supply to supply power to a temporary pumping system during bypass pumping. The Contractor shall maintain a portable generator on site during bypass pumping to provide emergency power to the temporary bypass pumping system in the event that the power supply to the station is interrupted. At no time shall the power supply to the existing storm pump station and storm pumps be affected by the Contractor's work. PG&E power to the storm drain pump station shall be maintained at all times.
3. The Contractor shall provide a bypass pumping plan for City approval prior to implementation of the plan. Alternative methods from the temporary bypass pumping methods shown in the contract documents, including using centrifugal pumps, may be considered. Contractor shall submit a plan that demonstrates adherence to the temporary bypass pumping requirements in the contract documents.
4. On sheet E-5 of the contract documents, there is reference to two scales that contradict each other. The bar scale, shown in the upper left corner of the sheet shall govern. The scale reference in text labeled "1/2" = 1'-0"" below the 'ELECTRICAL SITE PLAN' label shall be ignored.

Public Works & Utilities

City Engineer
11 English Street
Petaluma, CA 94952
Phone (707) 778-4303

Environmental Services
Ellis Creek –
Water Recycling Facility
3890 Cypress Drive
Petaluma, CA 94954
Phone (707) 776-3777
Fax (707) 656-4067

Parks & Facility Maintenance
840 Hopper St. Ext.
Petaluma, CA 94952
Phone (707) 778-4303
Fax (707) 206-6065

Transit Division
555 N. McDowell Blvd.
Petaluma, CA 94954
Phone (707) 778-4421

Utilities & Field Operations
202 N. McDowell Blvd.
Petaluma, CA 94954
Phone (707) 778-4546
Fax (707) 206-6034

E-Mail:
publicworks@cityofpetaluma.org

5. An addition hatch for interior access has been added to the project drawings. Contractor shall submit materials and mounting methods to for hatch location shown. The revised sheet C-5 is included in this addendum and shall supersede the sheet C-5 included in the contract documents.

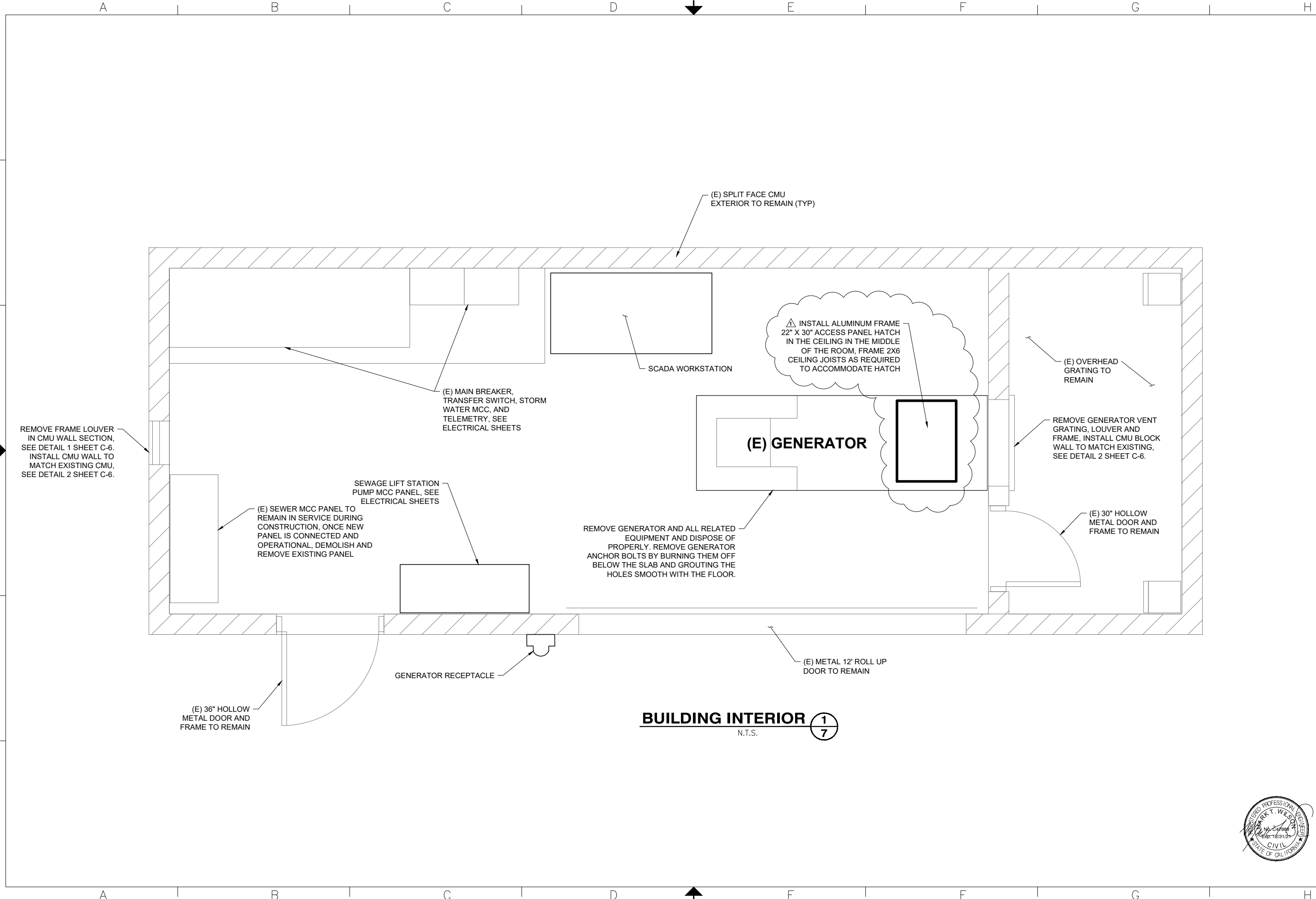
This Addendum No. 2 shall become part of the Contract and all provisions of the Contract shall apply thereto. Bidders shall acknowledge all Addendums in the Bid Schedule.

City of Petaluma,

A handwritten signature in black ink, appearing to read 'Daniel Herrera', is written over a horizontal line.

Daniel Herrera
Senior Civil Engineer
Public Works & Utilities Department

P:_Projects\8723 Petaluma Payran Lift Station\2_Design\CAD\8723 Building.dwg Layout: Building Interior Pagesetup: -----



BUILDING INTERIOR (1/7)
N.T.S.

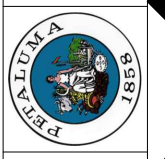


DATE: AUG 2020
DESIGNED BY: AAB
DRAWN BY: AAB
CHECKED BY: MTW

PROJECT NUMBER
C66501519

NUTE ENGINEERING
907 MISSION AVE.
SAN RAFAEL, CALIFORNIA 94901
TEL: 415.453.4480 FAX: 415.453.0343

CITY OF PETALUMA
PUBLIC WORKS & UTILITIES
202 N. McDowell Blvd., PETALUMA, CALIFORNIA, 94954
PH. 707-778-4546 FAX. 707-778-4508



PAYRAN LIFT STATION REHABILITATION
8-12 JESS AVENUE
BUILDING INTERIOR

SHEET
C-5
7 OF 27