

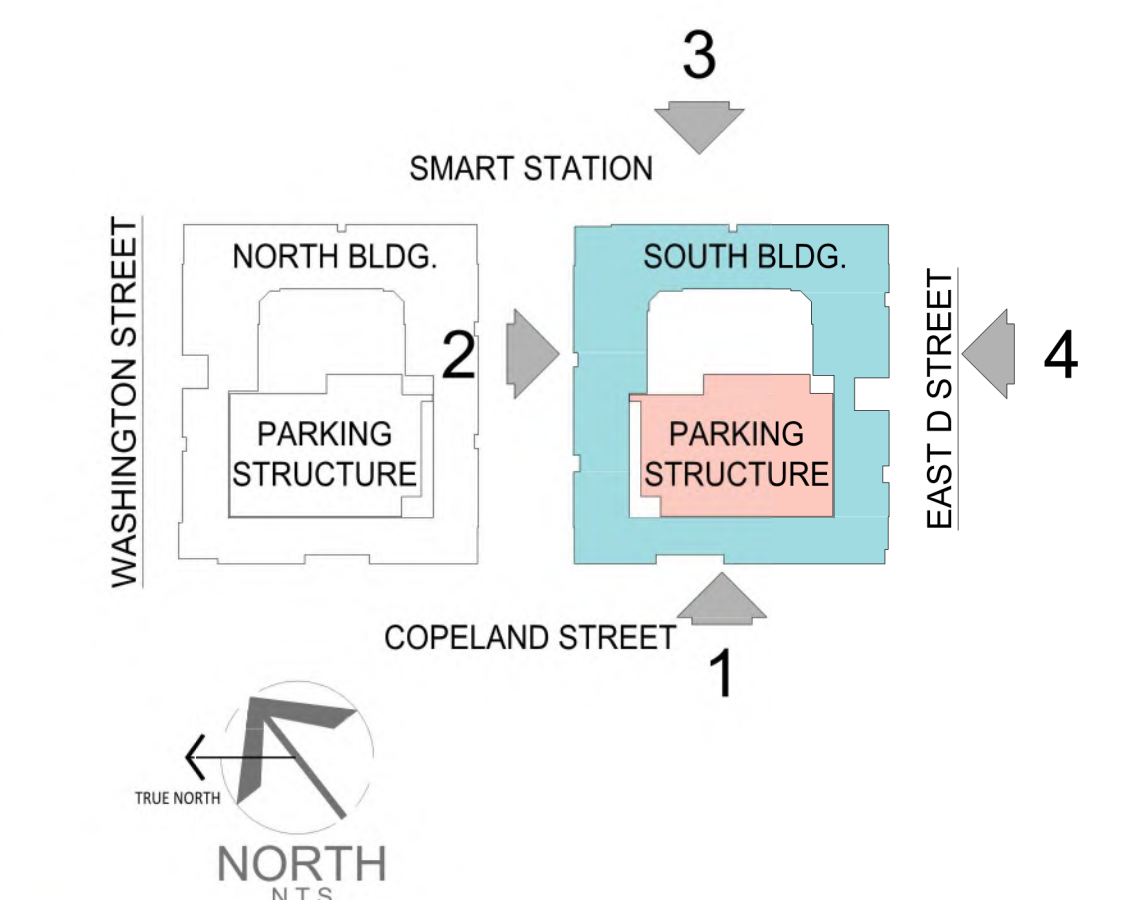


④ SOUTH SITE SOUTH - D STREET

**MATERIAL / COLOR LEGEND**

- 1 ARCHITECTURAL FOAM TRIMS
  - 2 STUCCO 20-30 SAND FINISH
  - 3 THIN BRICK VENEER - COLOR 1: BELDEN 8632 OR SIMILAR
  - 4 THIN BRICK VENEER - COLOR 2: BELDEN CONCORD BLEND OR SIMILAR
  - 5 LANDSCAPE FENCE SEE LANDSCAPE SHEET FOR DETAILS NOT SHOWN HERE
  - 6 V-CRIMP METAL PANELS - COLOR 1 - BEIGE
  - 7 V-CRIMP METAL PANELS - COLOR 2 - DARK BRONZE
  - 8 STEEL CORRUGATED AWNING
  - 9 ALUMINUM STOREFRONT
  - 10 VINYL WINDOWS - BRONZE
  - 11 FABRICATED METAL RAILINGS
  - 12 GLASS RAILINGS
  - 13 STEEL TRELLIS
  - 14 STONE VENEER BASE - COLOR 1 - MEDIUM GRAY
  - 15 STONE VENEER BASE - COLOR 2 - COUNTRY BEIGE
  - 16 STONE VENEER BASE - COLOR 3 - FRENCH LIMESTONE
  - 17 DECORATIVE STEEL TRUSS
  - 18 PAINTED METAL GATE
  - A STUCCO COLOR 1 - SITE WHITE
  - B STUCCO COLOR 2 - GRAY SCREEN
  - C STUCCO COLOR 3 - TOASTY
  - D STUCCO COLOR 4 - COBBLE BROWN
  - E STUCCO COLOR 5 - QUIVER TAN
  - F STUCCO COLOR 6 - URBANE BRONZE
  - G STUCCO COLOR 7 - IRON ORE
  - H STUCCO COLOR 8 - ARRESTING AUBURN
  - I STUCCO COLOR 9 - BRACING BLUE
- \* REFER TO SHEET A01 MATERIAL BOARD FOR DETAILS NOT SHOWN HERE.

**KEY MAP**



③ SOUTH SITE EAST - SMART STATION

NOTE: LANDSCAPE FENCE (REFER TO LANDSCAPE DRAWING FOR DETAILS NOT SHOWN HERE)







2 SOUTH SITE NORTH-THOROUGHFARE

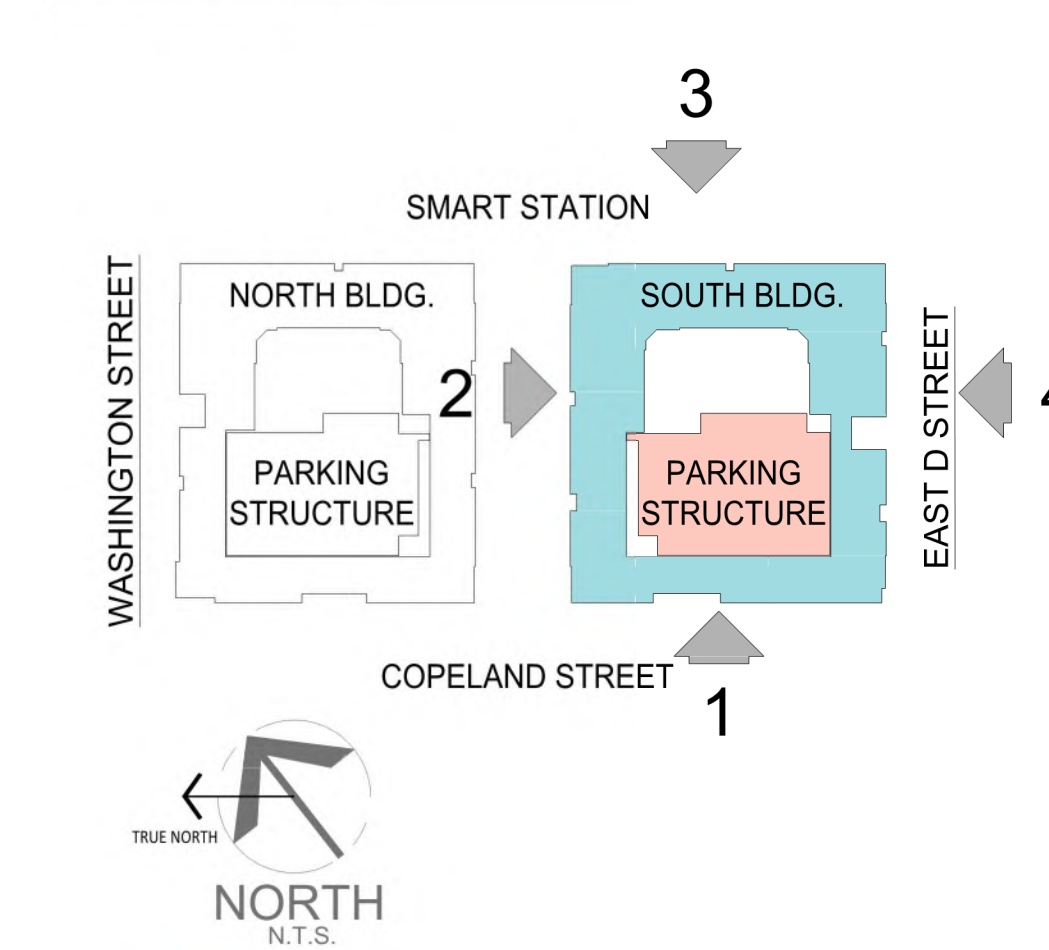
MATERIAL / COLOR LEGEND

- 1 ARCHITECTURAL FOAM TRIMS
  - 2 STUCCO 20-30 SAND FINISH
  - 3 THIN BRICK VENEER - COLOR 1. BELDEN 8632 OR SIMILAR
  - 4 THIN BRICK VENEER - COLOR 2. BELDEN CONCORD BLEND OR SIMILAR
  - 5 LANDSCAPE FENCE SEE LANDSCAPE SHEET FOR DETAILS NOT SHOWN HERE
  - 6 V-CRIMP METAL PANELS - COLOR 1 - BEIGE
  - 7 V-CRIMP METAL PANELS - COLOR 2 - DARK BRONZE
  - 8 STEEL CORRUGATED AWNING
  - 9 ALUMINUM STOREFRONT
  - 10 VINYL WINDOWS - BRONZE
  - 11 FABRICATED METAL RAILINGS
  - 12 GLASS RAILINGS
  - 13 STEEL TRELLIS
  - 14 STONE VENEER BASE - COLOR 1 - MEDIUM GRAY
  - 15 STONE VENEER BASE - COLOR 2 - COUNTRY BEIGE
  - 16 STONE VENEER BASE - COLOR 3 - FRENCH LIMESTONE
  - 17 DECORATIVE STEEL TRUSS
  - 18 PAINTED METAL GATE
- 
- A STUCCO COLOR 1 - SITE WHITE
  - B STUCCO COLOR 2 - GRAY SCREEN
  - C STUCCO COLOR 3 - TOASTY
  - D STUCCO COLOR 4 - COBBLE BROWN
  - E STUCCO COLOR 5 - QUIVER TAN
  - F STUCCO COLOR 6 - URBANE BRONZE
  - G STUCCO COLOR 7 - IRON ORE
  - H STUCCO COLOR 8 - ARRESTING AUBURN
  - I STUCCO COLOR 9 - BRACING BLUE
- \* REFER TO SHEET A01 MATERIAL BOARD FOR DETAILS NOT SHOWN HERE.



1 SOUTH SITE WEST - COPELAND

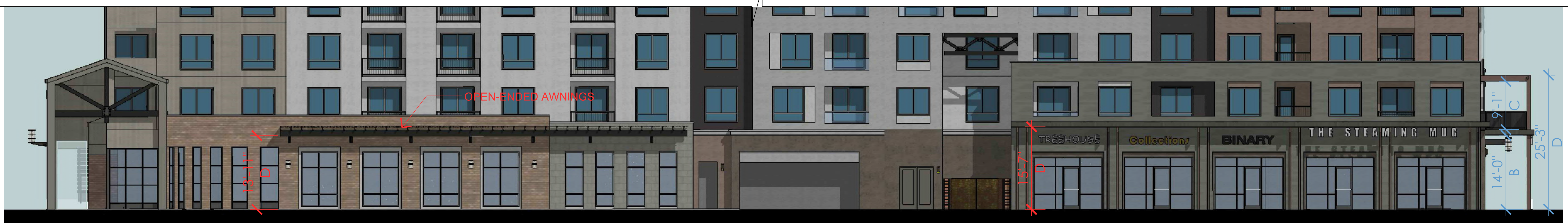
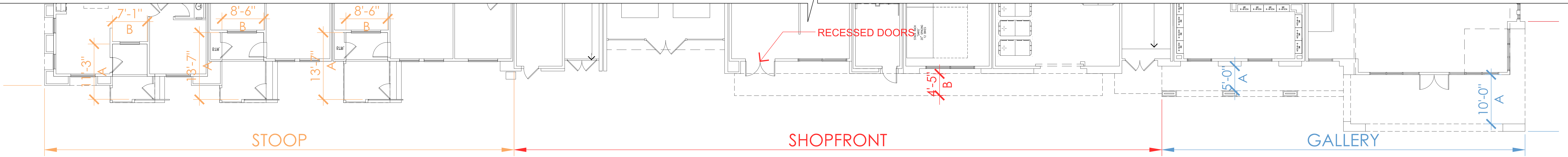
KEY MAP







NORTH SITE - NORTH ELEVATION 2



NORTH SITE - WEST ELEVATION 1

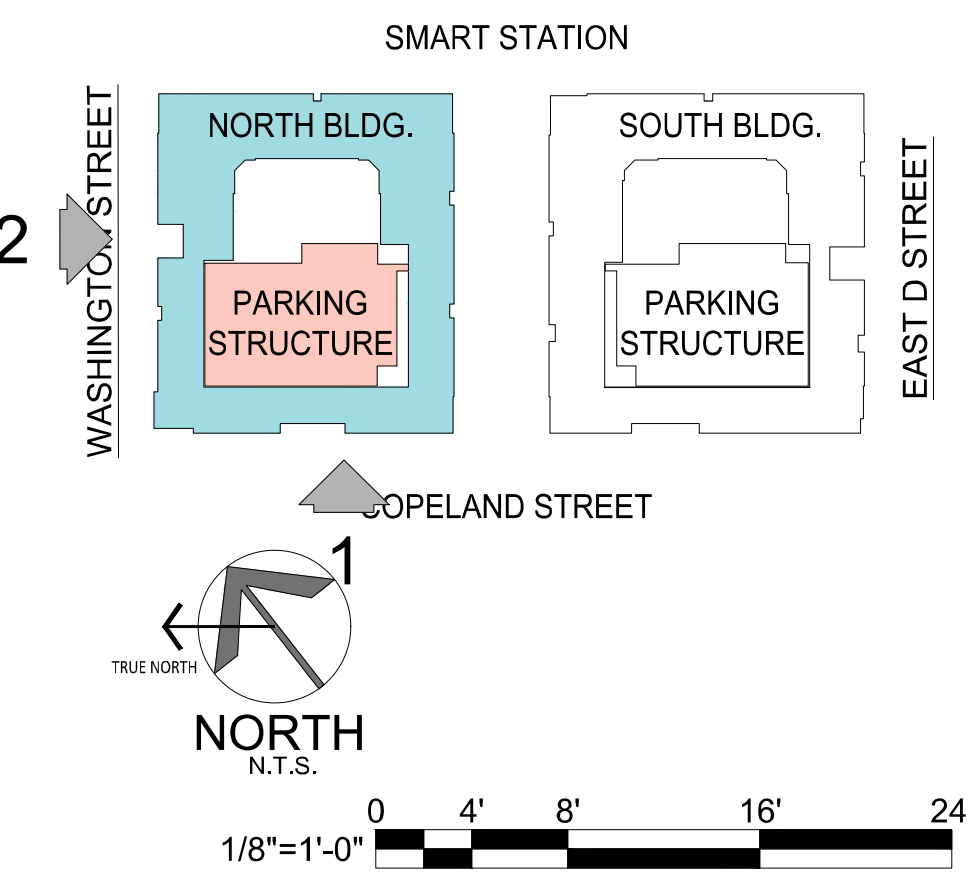


KEY MAP

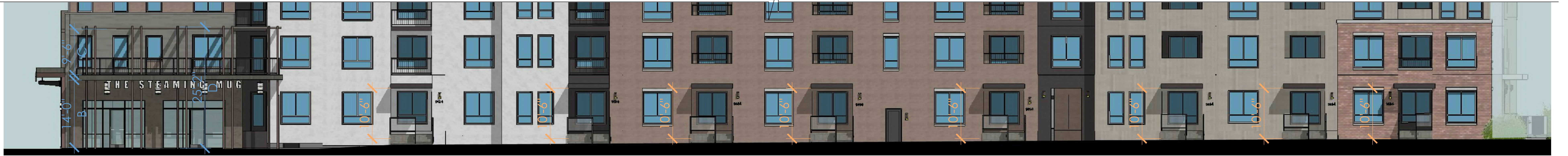
A. Description		
<b>Gallery:</b> The main facade of the building is at the frontage line and the gallery element overlaps the sidewalk. This type is intended for buildings with ground-floor commercial uses and may be one or two stories. The gallery should be used to provide the primary circulation along a frontage and extend far enough from the building to provide adequate protection and circulation for pedestrians.		
B. Size		
Depth, clear	8' min.	A
Ground floor height, clear	11' min.	B
Upper floor height, clear	9' min.	C
Height	2 Stories max.	D
Setback from curb	2' min.	E

A. Description		
<b>Shopfront:</b> The main facade of the building is at or near the frontage line with an at-grade entrance along the public way. This type is intended for retail use. It has substantial glazing at the sidewalk level and may include an awning that may overlap the sidewalk. It may be used in conjunction with other frontage types.		
B. Size		
Distance between glazing	2' max.	A
Ground floor transparency	75% min.	
Depth of recessed entries	5' max.	
C. Awning		
Depth	4' min.	B
Setback from curb	2' min.	C
Height, clear	8' min.	D

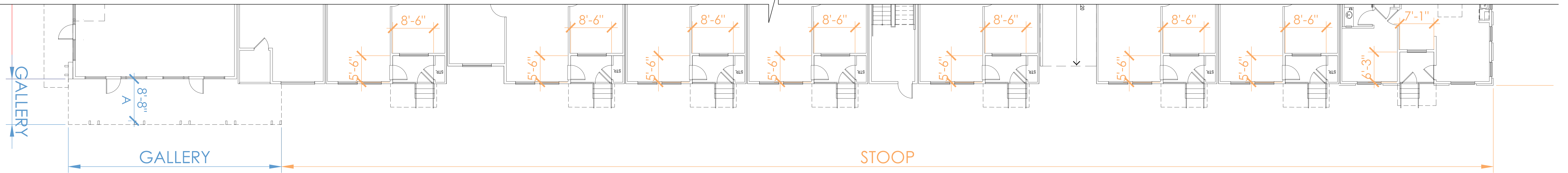
A. Description		
<b>Stoop:</b> The main facade of the building is near the frontage line and the elevated stoop engages the sidewalk. The stoop shall be elevated above the sidewalk to ensure privacy within the building. Stairs from the stoop may lead directly to the sidewalk or may be side-loaded. This type is appropriate for residential uses with small setbacks.		
B. Size		
Width, clear	5' min.; 8' max.	A
Depth, clear	5' min.; 8' max.	B
Height, clear	8' min.	C
Height	1 Story max.	
Depth of recessed entries	6' max.	



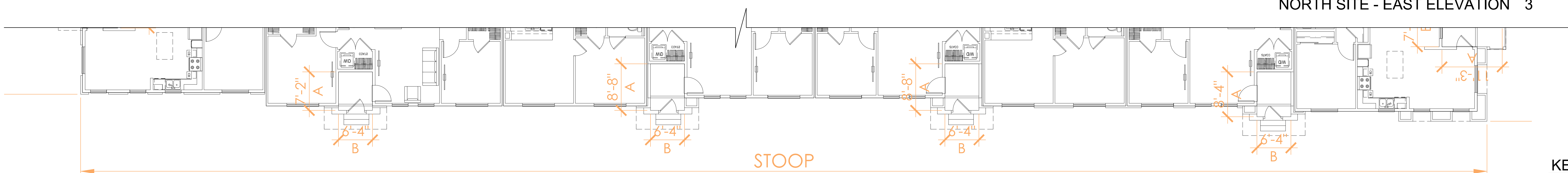




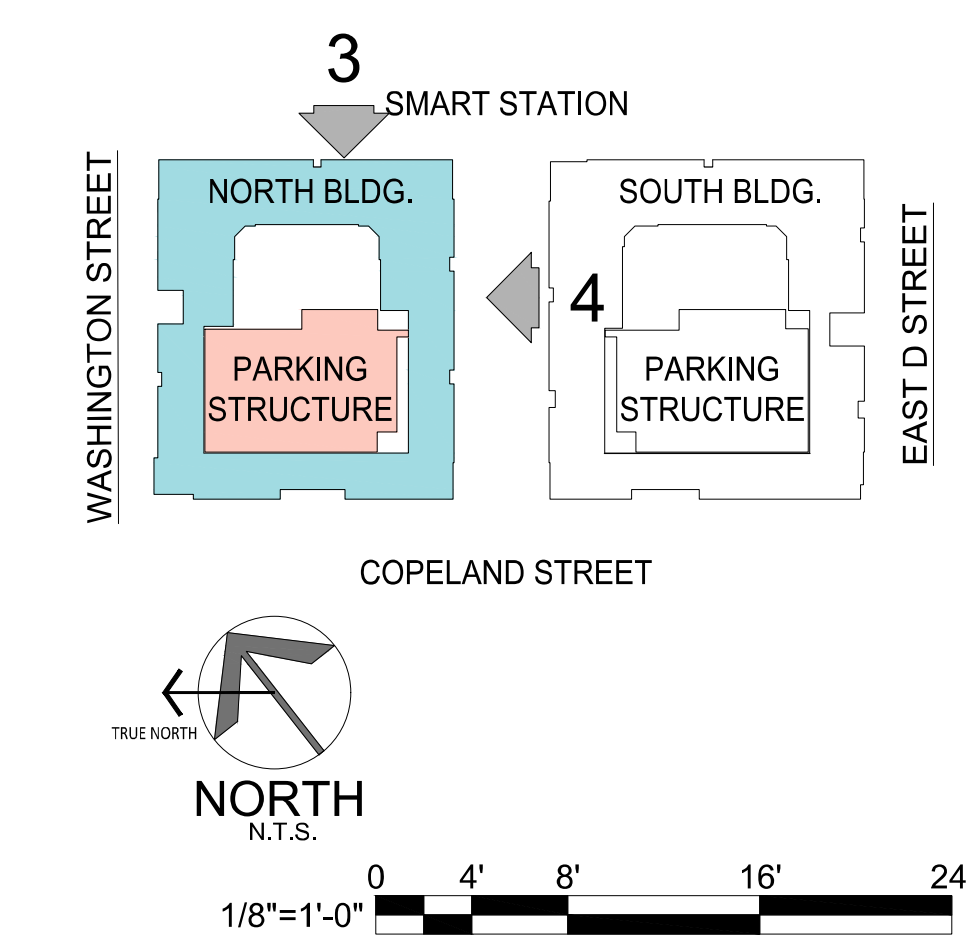
NORTH SITE - SOUTH ELEVATION 4



NORTH SITE - EAST ELEVATION 3



KEY MAP

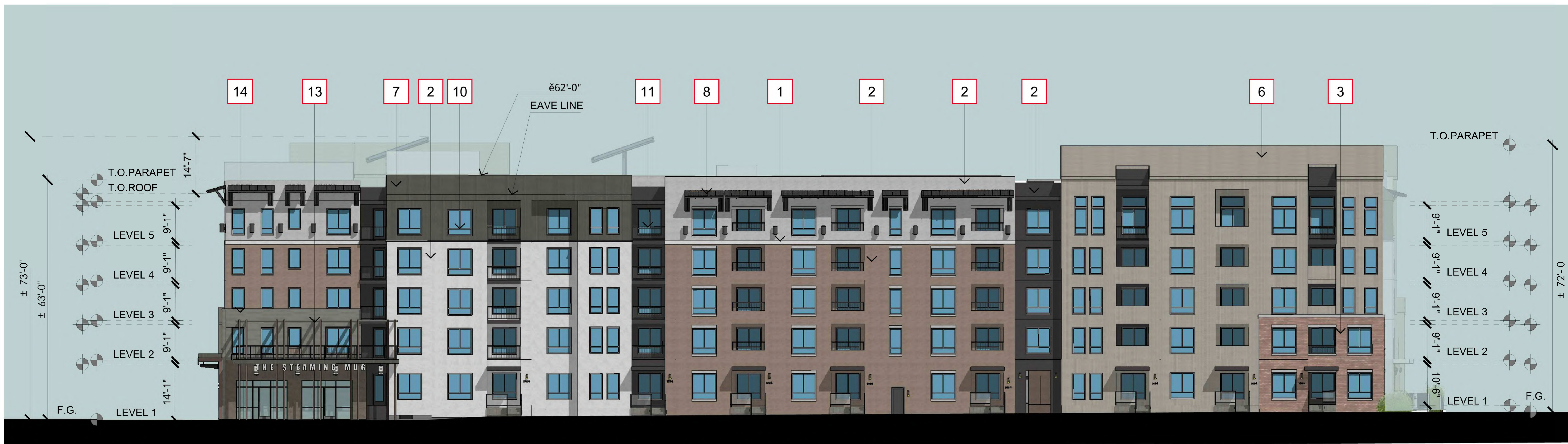


A. Description		
<b>Gallery:</b> The main facade of the building is at the frontage line and the gallery element overlaps the sidewalk. This type is intended for buildings with ground-floor commercial uses and may be one or two stories. The gallery should be used to provide the primary circulation along a frontage and extend far enough from the building to provide adequate protection and circulation for pedestrians.		
B. Size		
Depth, clear	8' min.	A
Ground floor height, clear	11' min.	B
Upper floor height, clear	9' min.	C
Height	2 Stories max.	D
Setback from curb	2' min.	E

A. Description		
<b>Shopfront:</b> The main facade of the building is at or near the frontage line with an at-grade entrance along the public way. This type is intended for retail use. It has substantial glazing at the sidewalk level and may include an awning that may overlap the sidewalk. It may be used in conjunction with other frontage types.		
B. Size		
Distance between glazing	2' max.	A
Ground floor transparency	75% min.	
Depth of recessed entries	5' max.	
C. Awning		
Depth	4' min.	B
Setback from curb	2' min.	C
Height, clear	8' min.	D

A. Description		
<b>Stoop:</b> The main facade of the building is near the frontage line and the elevated stoop engages the sidewalk. The stoop shall be elevated above the sidewalk to ensure privacy within the building. Stairs from the stoop may lead directly to the sidewalk or may be side-loaded. This type is appropriate for residential uses with small setbacks.		
B. Size		
Width, clear	5' min.; 8' max.	A
Depth, clear	5' min.; 8' max.	B
Height, clear	8' min.	C
Height	1 Story max.	
Depth of recessed entries	6' max.	





④ NORTH SITE SOUTH-THOROUGHFARE

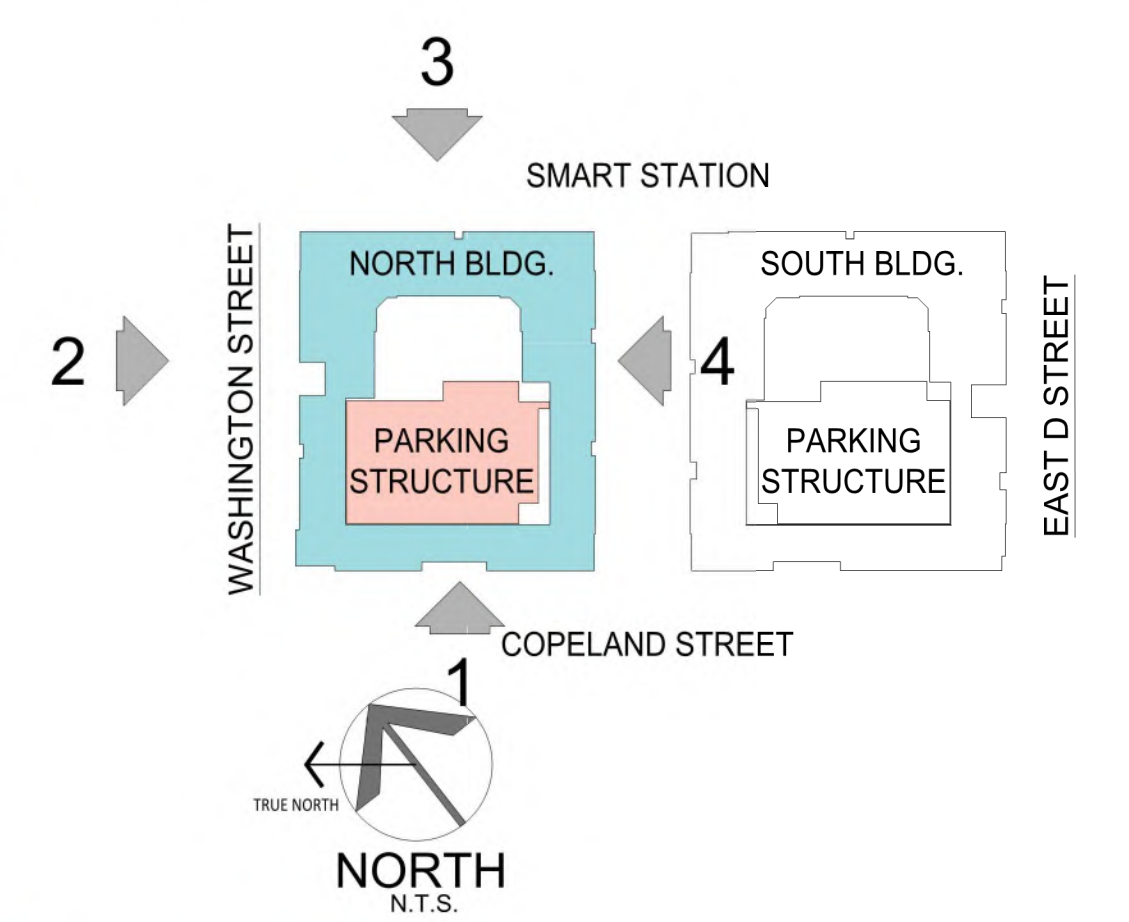


③ NORTH SITE EAST - SMART STATION

**MATERIAL / COLOR LEGEND**

- 1 ARCHITECTURAL FOAM TRIMS
  - 2 STUCCO 20-30 SAND FINISH
  - 3 THIN BRICK VENEER - COLOR 1: BELDEN 8632 OR SIMILAR
  - 4 THIN BRICK VENEER - COLOR 2: BELDEN CONCORD BLEND OR SIMILAR
  - 5 LANDSCAPE FENCE SEE LANDSCAPE SHEET FOR DETAILS NOT SHOWN HERE
  - 6 V-CRIMP METAL PANELS - COLOR 1 - BEIGE
  - 7 V-CRIMP METAL PANELS - COLOR 2 - DARK BRONZE
  - 8 STEEL CORRUGATED AWNING
  - 9 ALUMINUM STOREFRONT
  - 10 VINYL WINDOWS - BRONZE
  - 11 FABRICATED METAL RAILINGS
  - 12 GLASS RAILINGS
  - 13 STEEL TRELLIS
  - 14 STONE VENEER BASE - COLOR 1 - MEDIUM GRAY
  - 15 STONE VENEER BASE - COLOR 2 - COUNTRY BEIGE
  - 16 STONE VENEER BASE - COLOR 3 - FRENCH LIMESTONE
  - 17 DECORATIVE STEEL TRUSS
  - 18 PAINTED METAL GATE
  - A STUCCO COLOR 1 - SITE WHITE
  - B STUCCO COLOR 2 - GRAY SCREEN
  - C STUCCO COLOR 3 - TOASTY
  - D STUCCO COLOR 4 - COBBLE BROWN
  - E STUCCO COLOR 5 - QUIVER TAN
  - F STUCCO COLOR 6 - URBANE BRONZE
  - G STUCCO COLOR 7 - IRON ORE
  - H STUCCO COLOR 8 - ARRESTING AUBURN
  - I STUCCO COLOR 9 - BRACING BLUE
- \* REFER TO SHEET A01 MATERIAL BOARD FOR DETAILS NOT SHOWN HERE.

**KEY MAP**







2 NORTH SITE NORTH - WASHINGTON

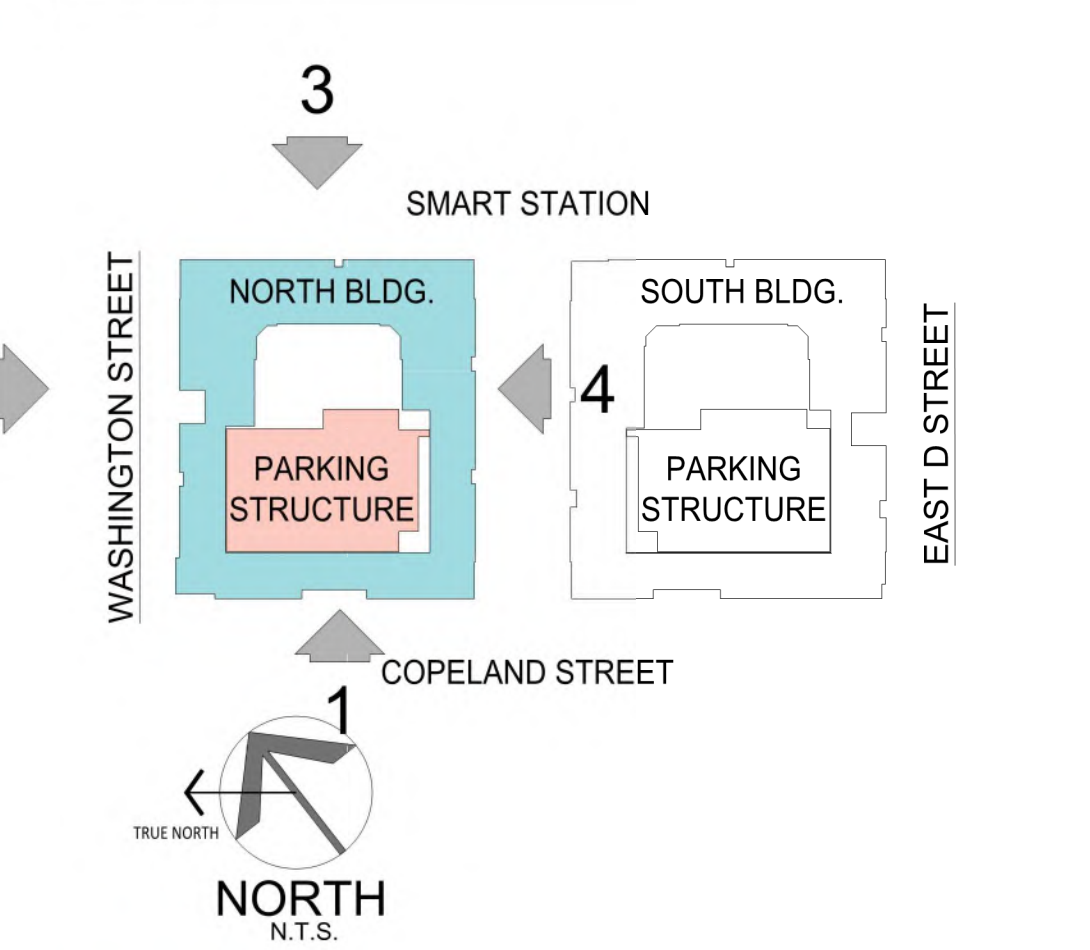
**MATERIAL / COLOR LEGEND**

- 1 ARCHITECTURAL FOAM TRIMS
  - 2 STUCCO 20-30 SAND FINISH
  - 3 THIN BRICK VENEER - COLOR 1: BELDEN 8632 OR SIMILAR
  - 4 THIN BRICK VENEER - COLOR2: BELDEN CONCORD BLEND OR SIMILAR
  - 5 LANDSCAPE FENCE SEE LANDSCAPE SHEET FOR DETAILS NOT SHOWN HERE
  - 6 V-CRIMP METAL PANELS - COLOR 1 - BEIGE
  - 7 V-CRIMP METAL PANELS - COLOR 2 - DARK BRONZE
  - 8 STEEL CORRUGATED AWNING
  - 9 ALUMINUM STOREFRONT
  - 10 VINYL WINDOWS - BRONZE
  - 11 FABRICATED METAL RAILINGS
  - 12 GLASS RAILINGS
  - 13 STEEL TRELLIS
  - 14 STONE VENEER BASE - COLOR 1 - MEDIUM GRAY
  - 15 STONE VENEER BASE - COLOR 2 - COUNTRY BEIGE
  - 16 STONE VENEER BASE - COLOR 3 - FRENCH LIMESTONE
  - 17 DECORATIVE STEEL TRUSS
  - 18 PAINTED METAL GATE
  - A STUCCO COLOR 1 - SITE WHITE
  - B STUCCO COLOR 2 - GRAY SCREEN
  - C STUCCO COLOR 3 - TOASTY
  - D STUCCO COLOR 4 - COBBLE BROWN
  - E STUCCO COLOR 5 - QUIVER TAN
  - F STUCCO COLOR 6 - URBANE BRONZE
  - G STUCCO COLOR 7 - IRON ORE
  - H STUCCO COLOR 8 - ARRESTING AUBURN
  - I STUCCO COLOR 9 - BRACING BLUE
- \* REFER TO SHEET A01 MATERIAL BOARD FOR DETAILS NOT SHOWN HERE.

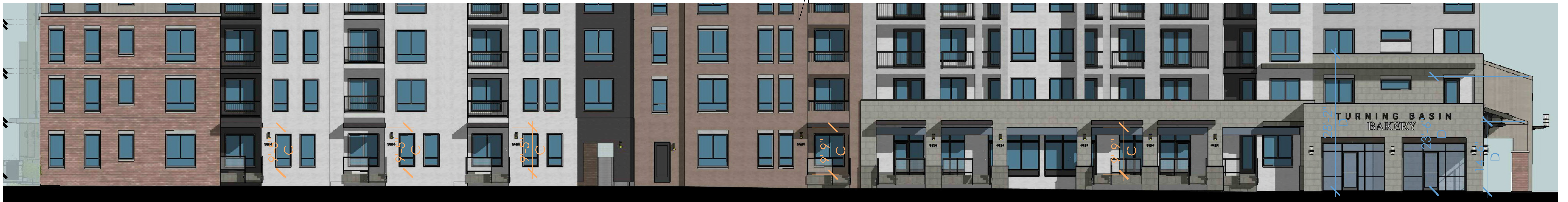


1 NORTH SITE WEST - COPELAND

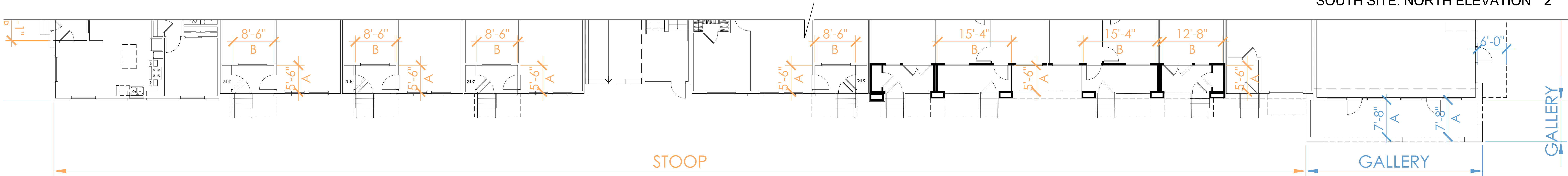
**KEY MAP**



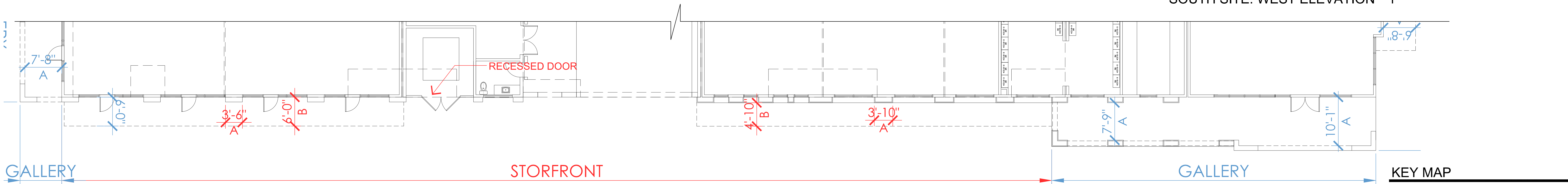




SOUTH SITE: NORTH ELEVATION 2



SOUTH SITE: WEST ELEVATION 1

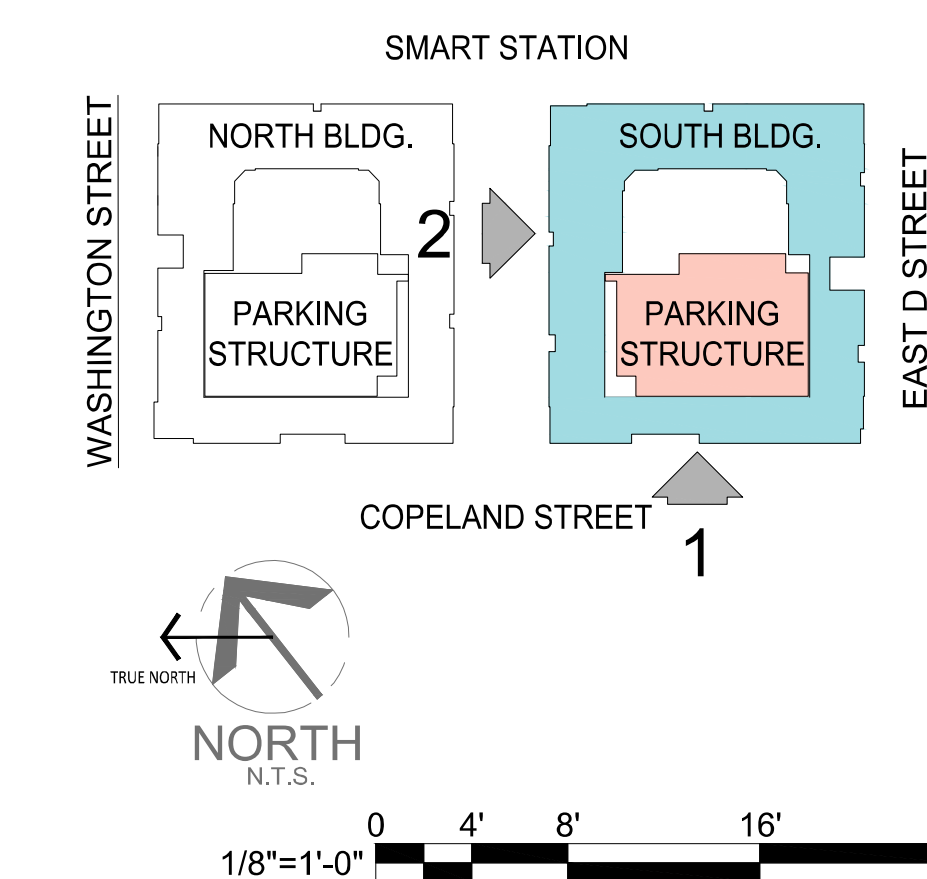


A. Description		
<b>Gallery:</b> The main facade of the building is at the frontage line and the gallery element overlaps the sidewalk. This type is intended for buildings with ground-floor commercial uses and may be one or two stories. The gallery should be used to provide the primary circulation along a frontage and extend far enough from the building to provide adequate protection and circulation for pedestrians.		
B. Size		
Depth, clear	8' min.	A
Ground floor height, clear	11' min.	B
Upper floor height, clear	9' min.	C
Height	2 Stories max.	D
Setback from curb	2' min.	E

A. Description		
<b>Shopfront:</b> The main facade of the building is at or near the frontage line with an at-grade entrance along the public way. This type is intended for retail use. It has substantial glazing at the sidewalk level and may include an awning that may overlap the sidewalk. It may be used in conjunction with other frontage types.		
B. Size		
Distance between glazing	2' max.	A
Ground floor transparency	75% min.	
Depth of recessed entries	5' max.	
C. Awning		
Depth	4' min.	B
Setback from curb	2' min.	C
Height, clear	8' min.	D

A. Description		
<b>Stoop:</b> The main facade of the building is near the frontage line and the elevated stoop engages the sidewalk. The stoop shall be elevated above the sidewalk to ensure privacy within the building. Stairs from the stoop may lead directly to the sidewalk or may be side-loaded. This type is appropriate for residential uses with small setbacks.		
B. Size		
Width, clear	5' min.; 8' max.	A
Depth, clear	5' min.; 8' max.	B
Height, clear	8' min.	C
Height	1 Story max.	
Depth of recessed entries	6' max.	

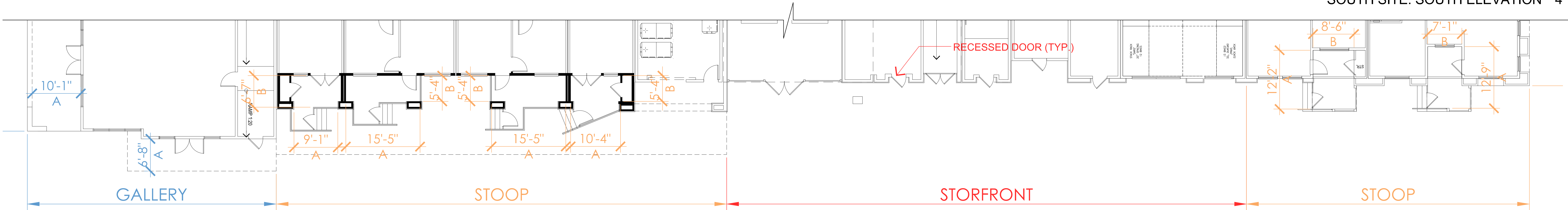
KEY MAP



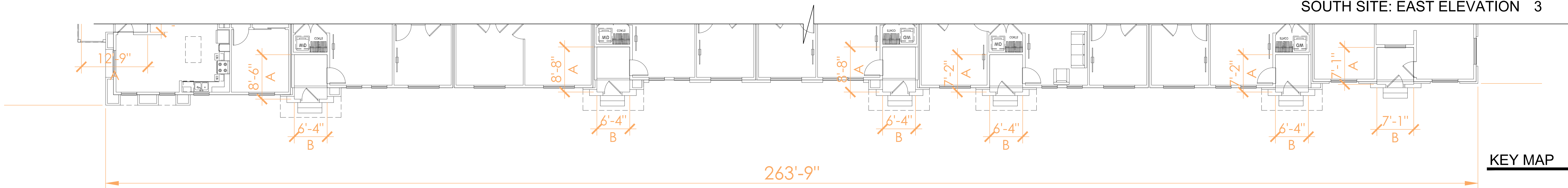




SOUTH SITE: SOUTH ELEVATION 4



SOUTH SITE: EAST ELEVATION 3

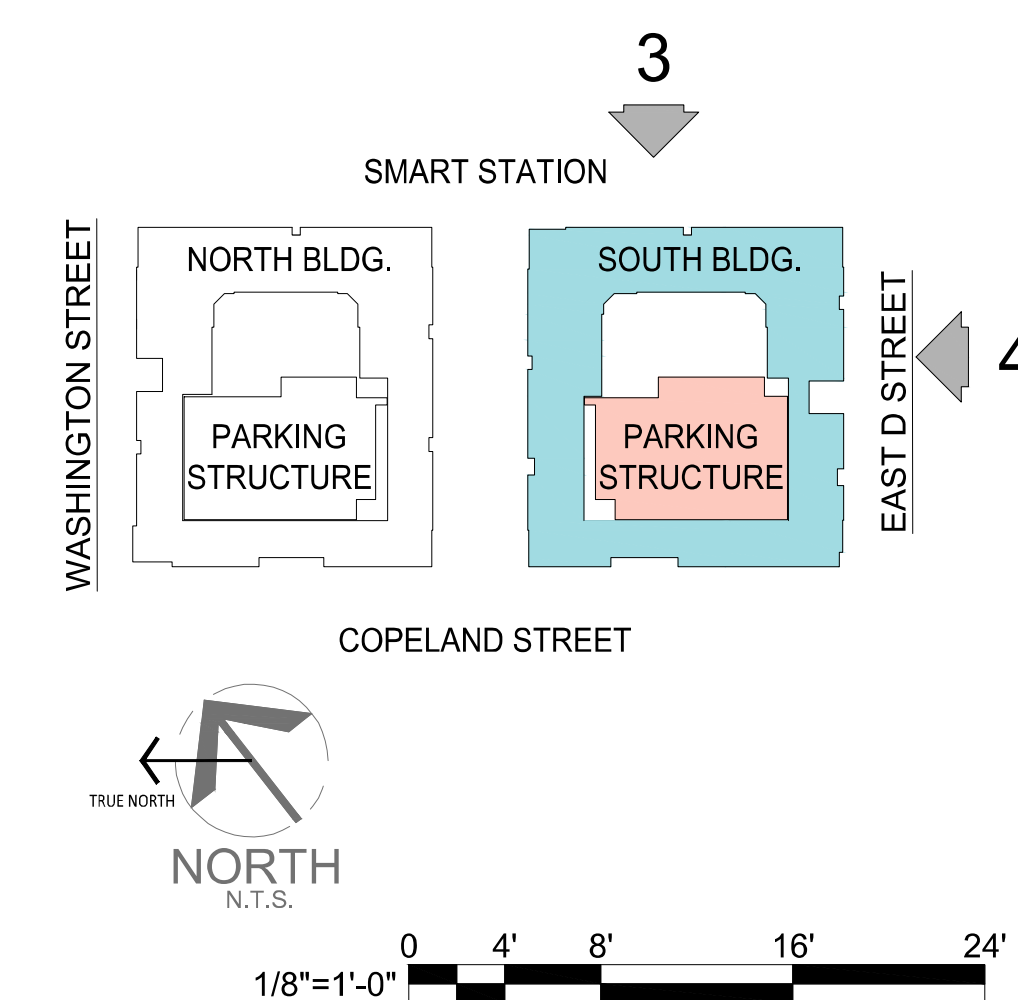


A. Description	
<b>Gallery:</b> The main facade of the building is at the frontage line and the gallery element overlaps the sidewalk. This type is intended for buildings with ground-floor commercial uses and may be one or two stories. The gallery should be used to provide the primary circulation along a frontage and extend far enough from the building to provide adequate protection and circulation for pedestrians.	
B. Size	
Depth, clear	8' min. <b>A</b>
Ground floor height, clear	11' min. <b>B</b>
Upper floor height, clear	9' min. <b>C</b>
Height	2 Stories max. <b>D</b>
Setback from curb	2' min. <b>E</b>

A. Description	
<b>Shopfront:</b> The main facade of the building is at or near the frontage line with an at-grade entrance along the public way. This type is intended for retail use. It has substantial glazing at the sidewalk level and may include an awning that may overlap the sidewalk. It may be used in conjunction with other frontage types.	
B. Size	
Distance between glazing	2' max. <b>A</b>
Ground floor transparency	75% min.
Depth of recessed entries	5' max.
C. Awning	
Depth	4' min. <b>B</b>
Setback from curb	2' min. <b>C</b>
Height, clear	8' min. <b>D</b>

A. Description	
<b>Stoop:</b> The main facade of the building is near the frontage line and the elevated stoop engages the sidewalk. The stoop shall be elevated above the sidewalk to ensure privacy within the building. Stairs from the stoop may lead directly to the sidewalk or may be side-loaded. This type is appropriate for residential uses with small setbacks.	
B. Size	
Width, clear	5' min.; 8' max. <b>A</b>
Depth, clear	5' min.; 8' max. <b>B</b>
Height, clear	8' min. <b>C</b>
Height	1 Story max.
Depth of recessed entries	6' max.

KEY MAP







THE PROJECT DESIGN UTILIZES MASSING BLOCKS THAT ARE DIFFERING BUILDING TYPES WITH VARIATION OF MATERIAL AND COLORS. WOVEN THROUGH THIS ARE REFERENCES TO AGRARIAN / INDUSTRIAL BUILDINGS AND HISTORICAL/VERNACULAR STRUCTURES IN THE PETALUMA AREA.

VIEW FROM INTERSECTION OF COPELAND STREET AND 'D' STREET LOOKING NORTH

1



THE VERTICAL ARTICULATION FORMS A STRONG BASE AND THE TOP LEVEL OF THE BUILDINGS ARE SEPARATELY ARTICULATED TO BREAK DOWN THE SCALE OF THE BUILDING. THE CORNER PORTIONS ARE ICONIC COMPOSITIONS OF AGRARIAN INFLUENCED FORMS MAKING A STRONG CORNER TO LANDMARK THE PROJECT.

VIEW FROM INTERSECTION OF COPELAND STREET AND WASHINGTON STREET LOOKING SOUTH EAST

2



WHILE THE BUILDINGS MAKE REFERENCE TO HISTORICAL INFLUENCES, THEY ARE DETAILED IN A CONTEMPORARY MANNER WITH CLEAN LINES AND COMPOSITIONS THAT ARE VARIED AND ASYMMETRIC.

VIEW FROM INTERSECTION OF TRAIN STATION AND D STREET LOOKING WEST

3

RENDERING



- ① URBAN MASSING OF INDIVIDUAL BUILDINGS
- ② CLOSE ALIGNMENT OF VERTICAL SPACING
- ③ VARIATION OF GROUND FLOOR FRONTAGES



- ⑦ INDUSTRIAL URBAN REFERENCE
- ⑧ USE OF VERTICAL STACKS OF BALCONIES AS BUILDING BREAK
- ⑨ EMPHASIS ON MIDDLE AND BASE - SIMPLIFIED UPPER FLOOR



- ⑬ BUILDINGS THAT ARE STYLISTICALLY SIMILAR BUT NOT THE SAME
- ⑭ EXTRA HEIGHT AT GROUND FLOOR
- ⑮ STRONG DEFINITION OF BUILDING MASS AT CORNERS



- ⑰ SIGNATURE CORNER BUILDING
- ⑳ VARIATION OF DESIGN AND WIDTH OF BUILDING MASSING
- ㉑ ARTICULATED GROUND FLOOR



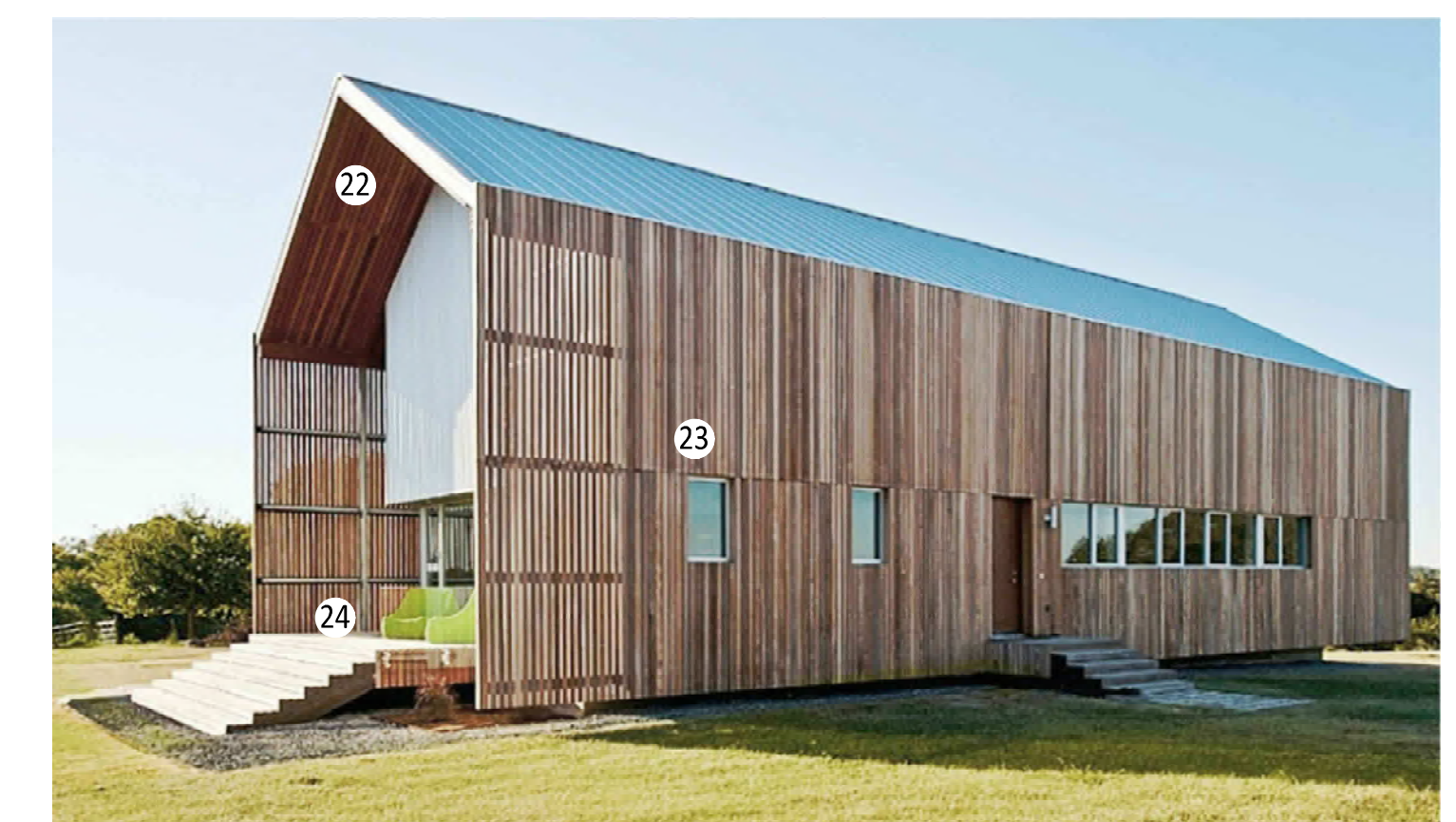
- ④ SIMPLE MASSING IN STEPPED ARRANGEMENT
- ⑤ MIX OF STRAIGHT PARAPETS AND SLOPED FORMS
- ⑥ TRUSS BRIDGE



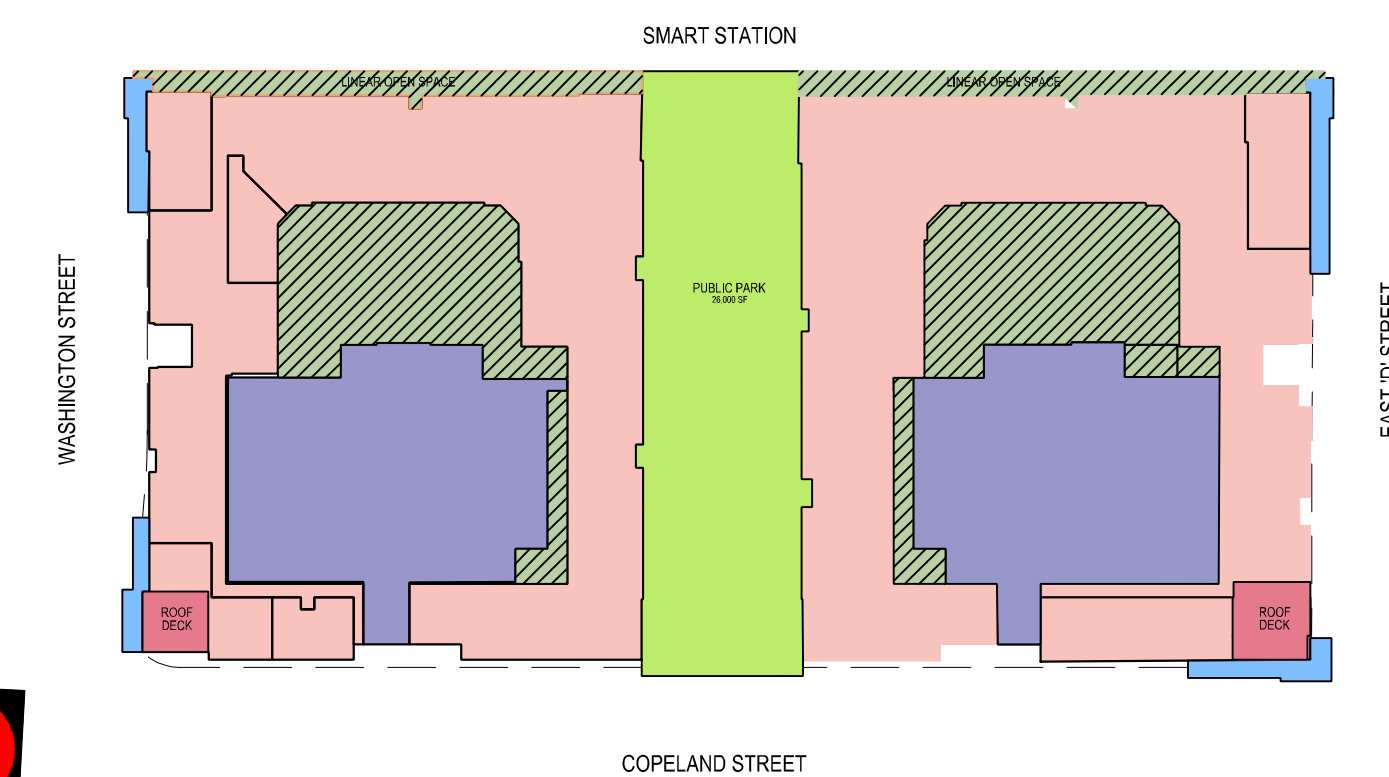
- ⑩ INDUSTRIAL FARM REFERENCE
- ⑪ ASYMMETRICAL COMPOSITION
- ⑫ STRAIGHT TRUSSES



- ⑯ AGRARIAN REFERENCE
- ⑰ VARIETY OF WINDOWS
- ⑱ CLEAN LINES



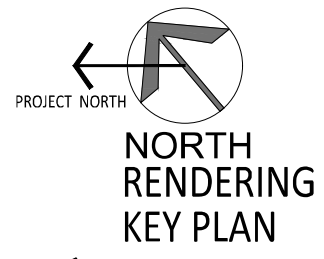
- ㉒ BARN SHAPE - CONTEMPORARY TREATMENT
- ㉓ LINEAR MINIMALIST AESTHETIC
- ㉔ BRIDGING STAIRS



3

2

1



NORTH RENDERING KEY PLAN





VIEW OF GALLERY AT CORNER OF COPELAND AND WASHINGTON 3a



VIEW OF GALLERY AT CORNER OF COPELAND AND WASHINGTON 3b

THE GALLERIES ARE DESIGNED AS CONTEMPORARY INTERPRETATIONS OF AGRARIAN/INDUSTRIAL BUILDING FORMS WITH TALL OPEN SPACES THAT ARE WELL LIT AND INVITING TO THE PUBLIC. THE MAIN LOBBIES HAVE ALUMINUM WINDOWS WITH DIVIDED LIGHTS.



VIEW FROM SOUTH SITE ON COPELAND STREET LOOKING NORTH 2a



VIEW FROM MID BLOCK ON COPELAND STREET LOOKING NORTH 2b

THE GROUND FLOOR STREETSCAPE IS A SEQUENCE OF FRONTAGES WITH DIFFERING DESIGNS AND MATERIALS CREATING A PLEASANT PEDESTRIAN EXPERIENCE. THE STREET FRONTAGE EMPLOY LARGE GLASS AREAS AND VARYING CANOPIES TO CREATE AN URBAN COMMERCIAL FEEL.



VIEW FROM IMID BLOCK ON 'D' STREET LOOKING EAST 1a



VIEW FROM IMID BLOCK ON 'D' STREET LOOKING WEST 1b

THE 'D' STREET FRONTAGE IS DESIGNED TO ACCOMMODATE A WIDE SIDEWALK COMBINED WITH A BIKE LANE. ONE PORTION OF THE GROUND FLOOR IS VENEERED WITH CAST STONE AND HAS A LONG CONTINUOUS CANOPY. ANOTHER PORTION OF THE FRONTAGE HAS BRICK VENEERING AND A SPECIAL FRAMED OPENING FOR A COMMON RESIDENTIAL ENTRANCE.

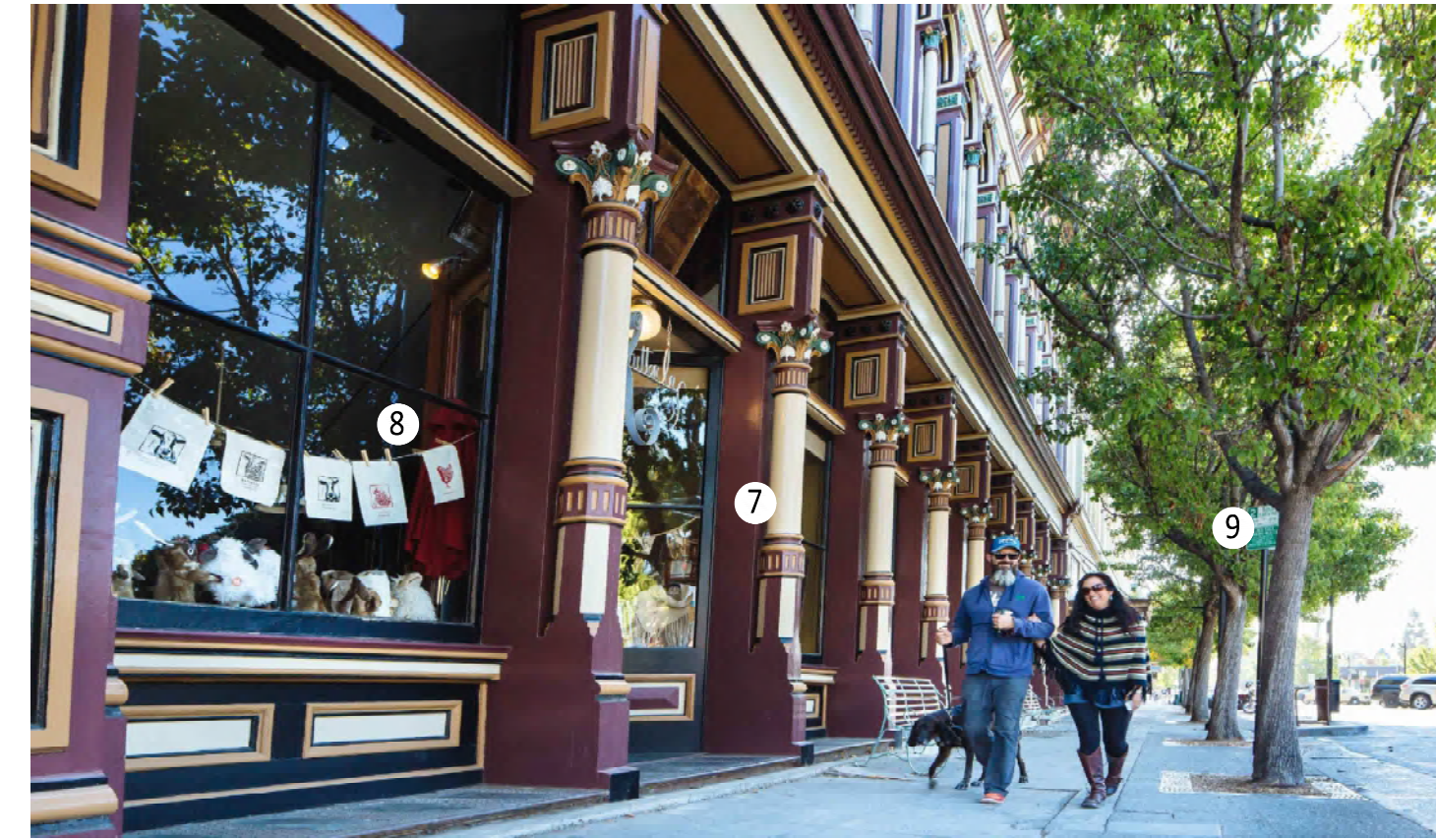
RENDERING



- ① ICONIC BARN SHAPE AT ENTRIES
- ② MINIMALIST DETAILING
- ③ LARGE GLASS FOR OPEN CONNECTION BETWEEN EXTERIOR AND INTERIOR



- ④ SIMPLE ARRANGEMENT OF TEXTURED MATERIALS
- ⑤ CONTEMPORARY MINIMALIST DETAILING
- ⑥ INTERLOCKING COMPOSITIONS



- ⑦ HISTORICAL COLUMNNADE REFERENCE
- ⑧ LARGE GLASS AREAS FOR
- ⑨ REGULAR STREET TREES



- ⑩ UNIQUE MATERIALS IN UNIQUE LOCATIONS
- ⑪ ASYMMETRICAL COMPOSITION
- ⑫ BARN SHAPE REFERENCE



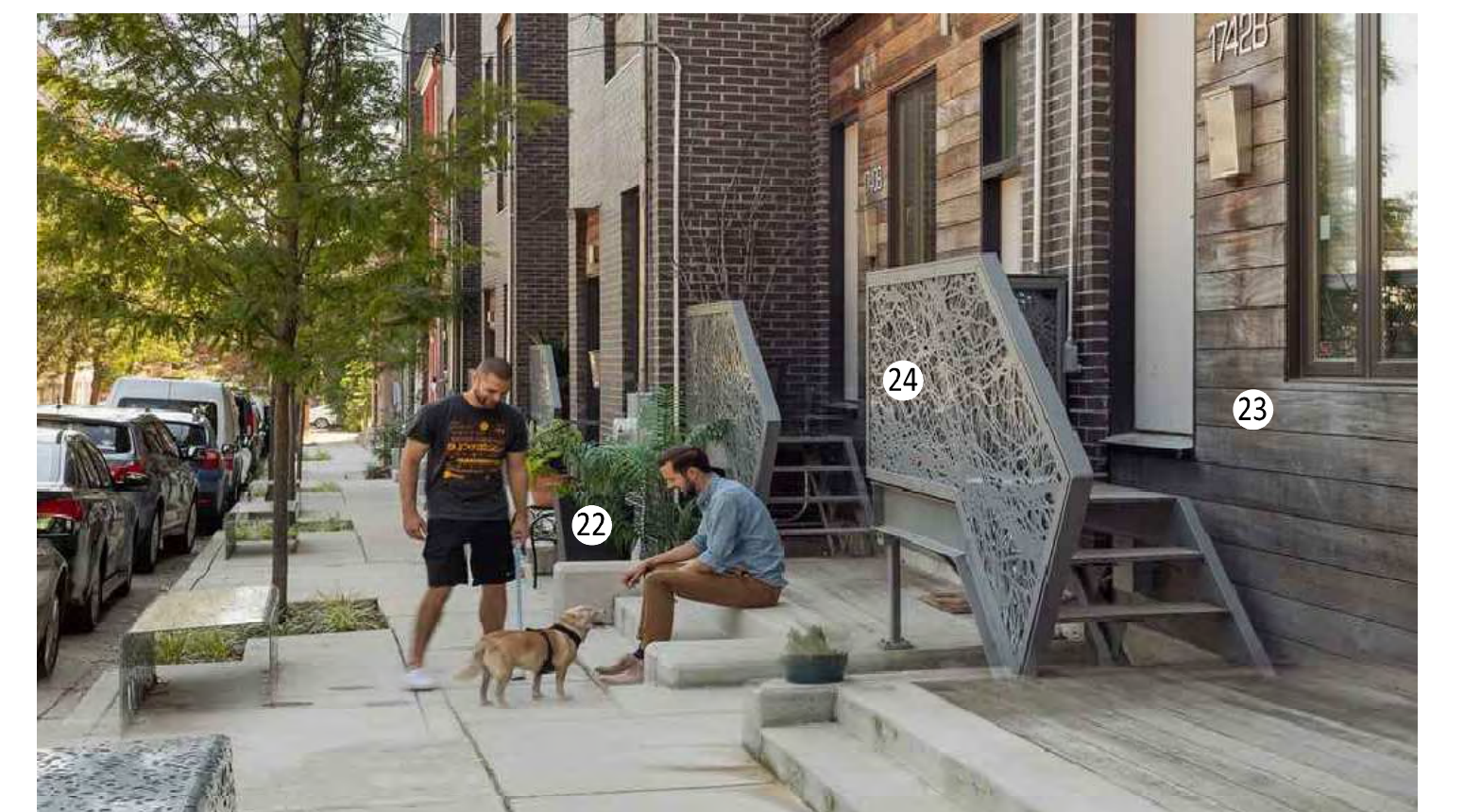
- ⑬ COLUMNNADE AND CANOPY
- ⑭ COLUMN BASE AND HEADERS AT OPENING
- ⑮ BULKHEAD WALLS



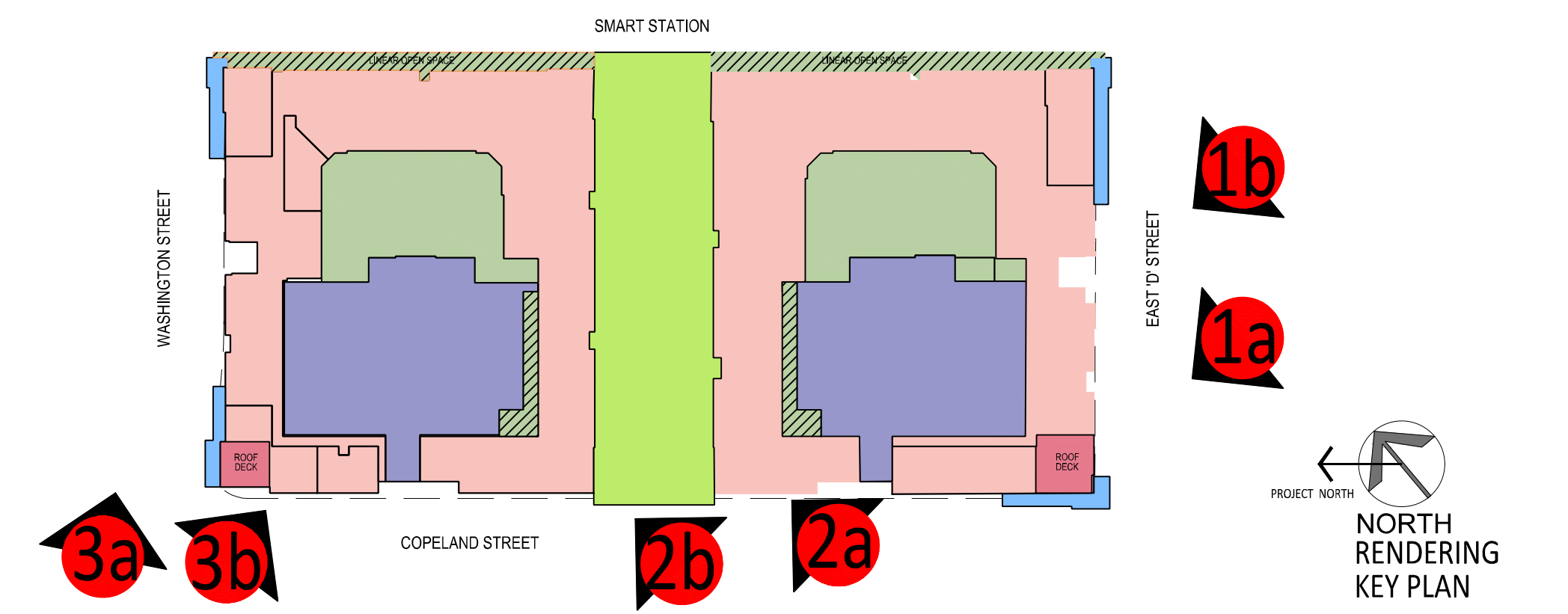
- ⑯ DOORYARD CONNECTIVITY TO SIDEWALK
- ⑰ BUFFERING LANDSCAPE
- ⑱ LOW WALL AND STEP



- ⑲ TRANSCOME WINDOWS
- ⑳ UNIQUE CANOPY
- ㉑ VARIATION OF DESIGN FOR FRONTAGES

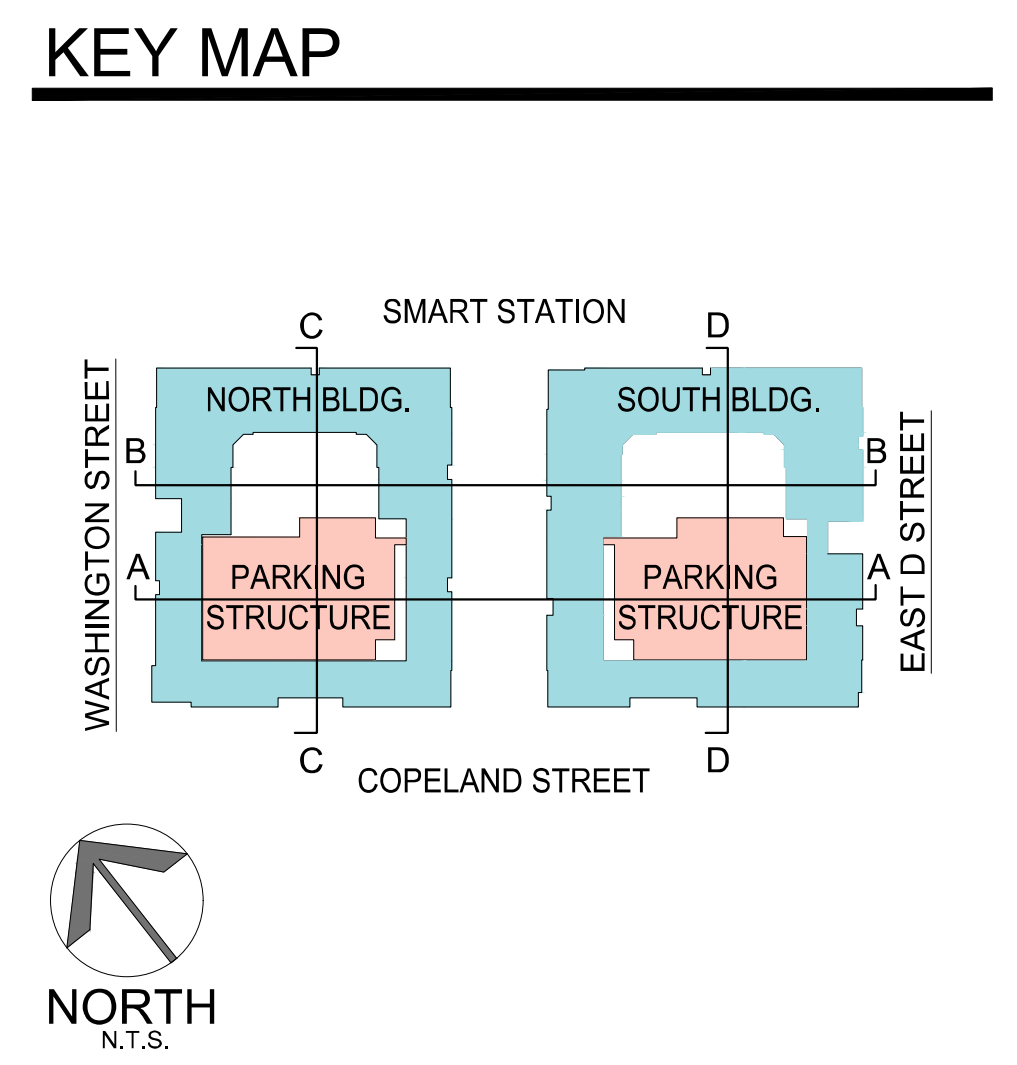
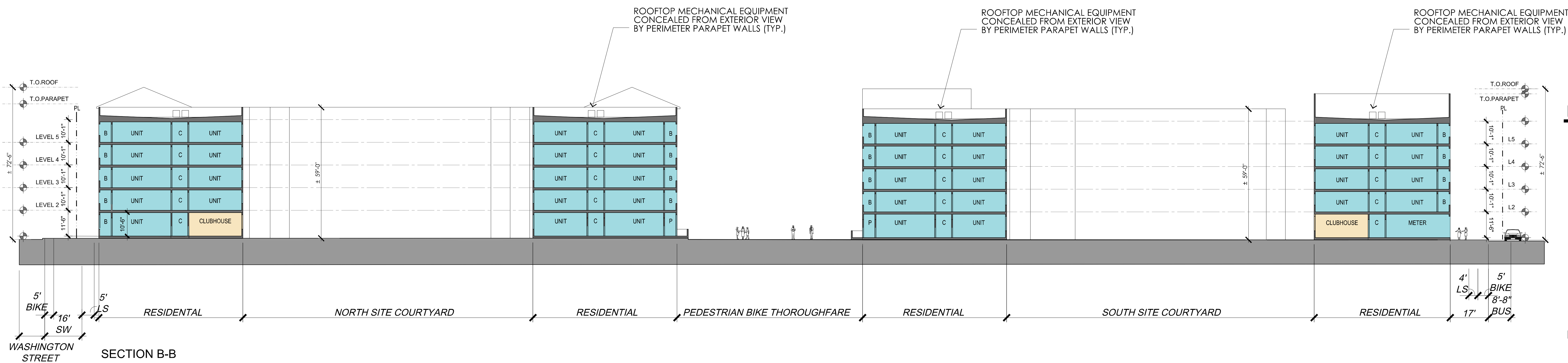
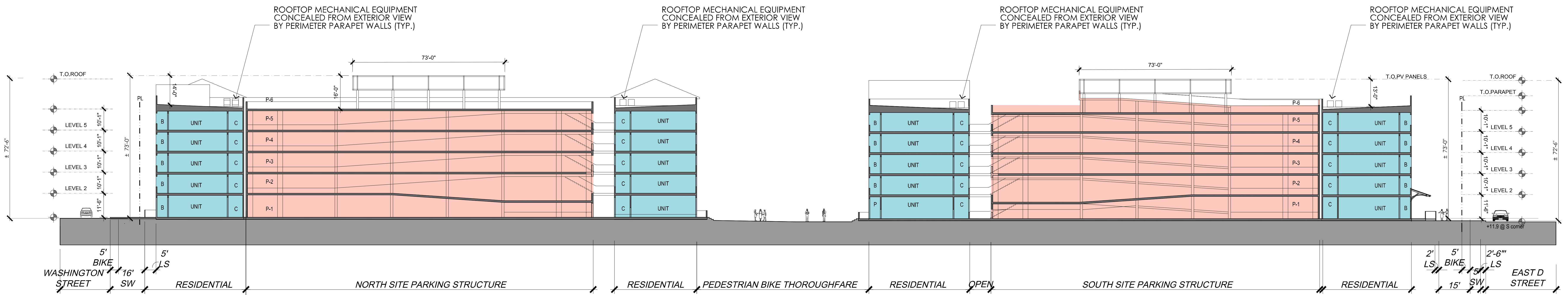
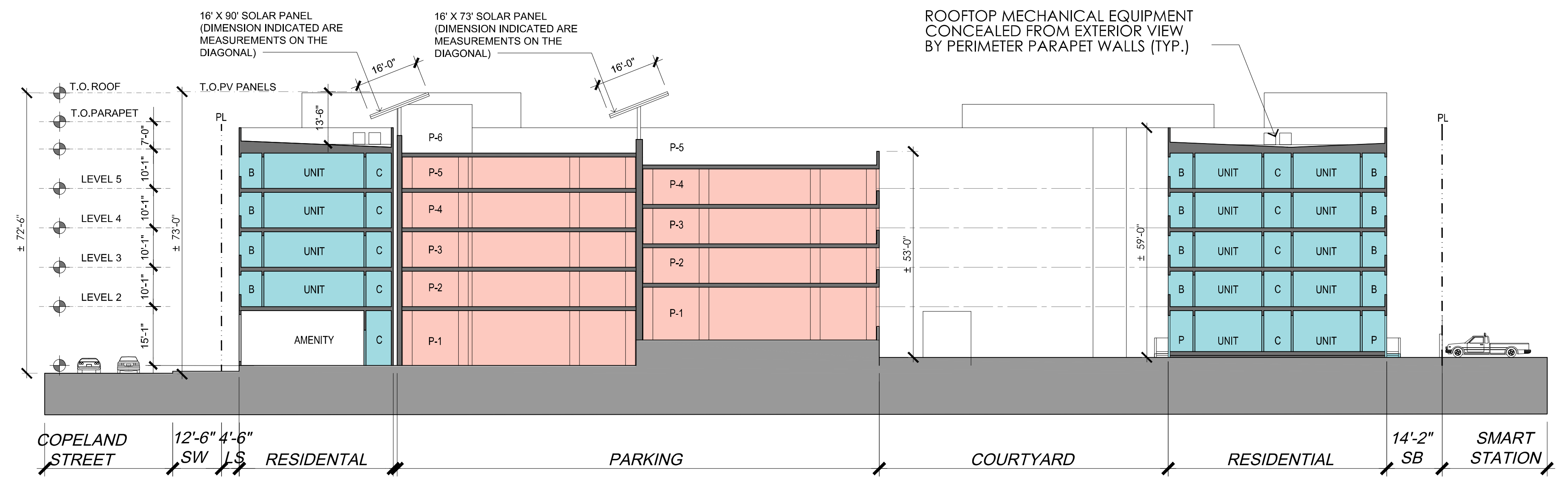
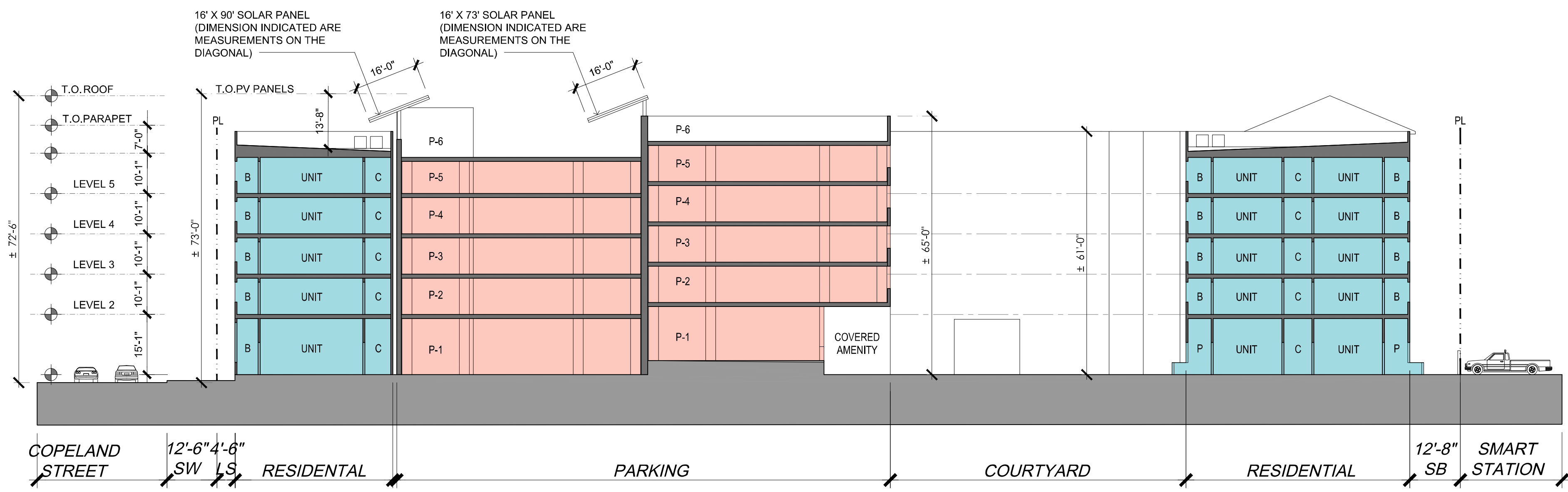


- ㉒ STEPS AT SIDEWALK FRONTAGE
- ㉓ RAISED FLOOR FOR VISUAL SEPERATION
- ㉔ TEXTURED BLEND OF MATERIALS



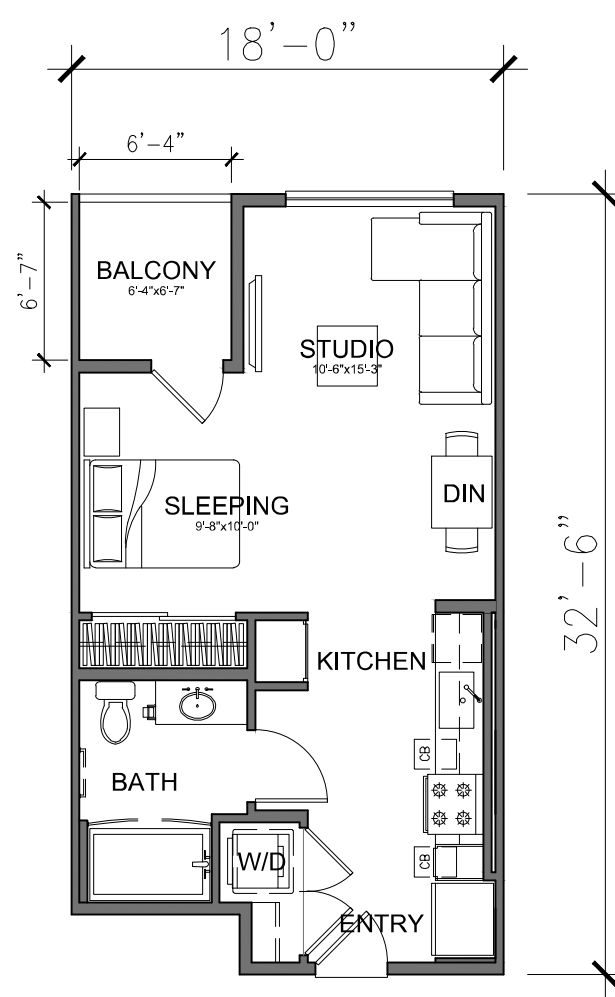
NORTH RENDERING KEY PLAN



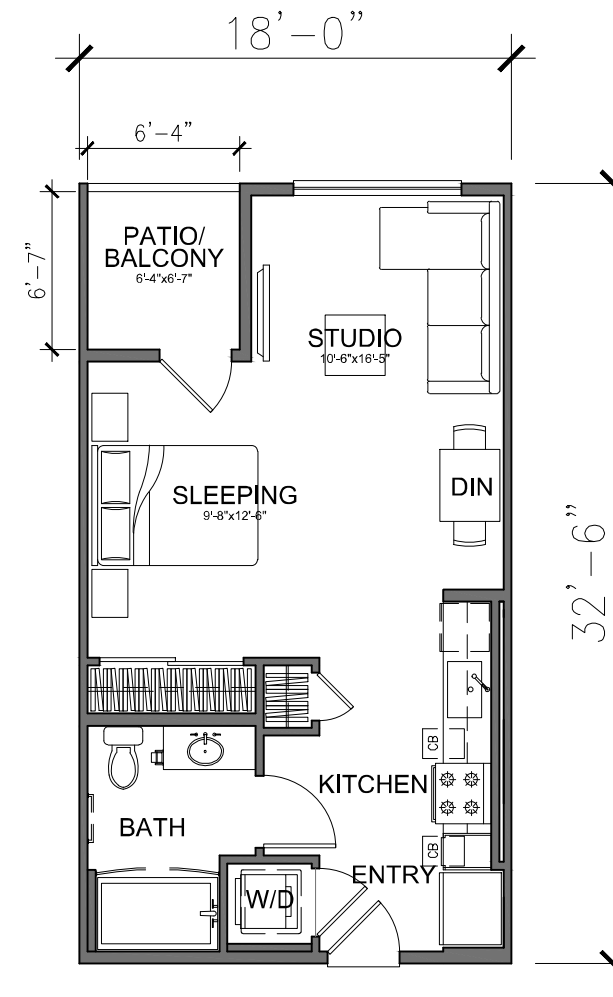


CONCEPTUAL BUILDING SECTIONS

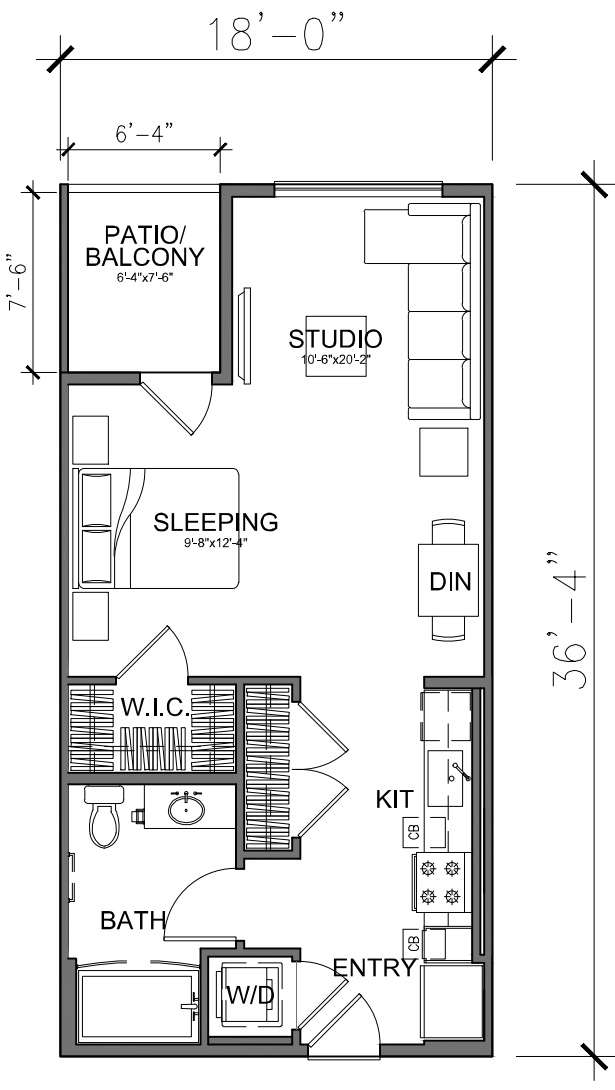




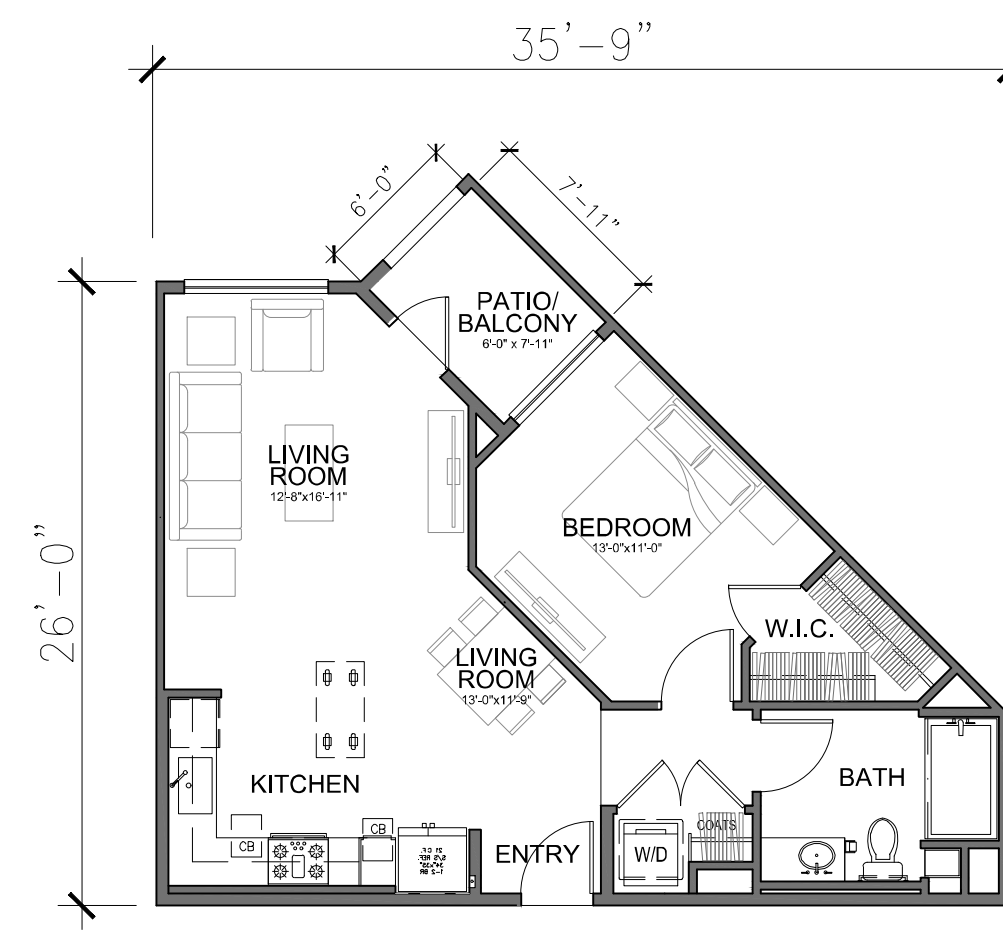
**UNIT S2A**  
STUDIO  
LIVABLE AREA: 521 SQ. FT.  
PATIO/ BALCONY: 42 SQ. FT.



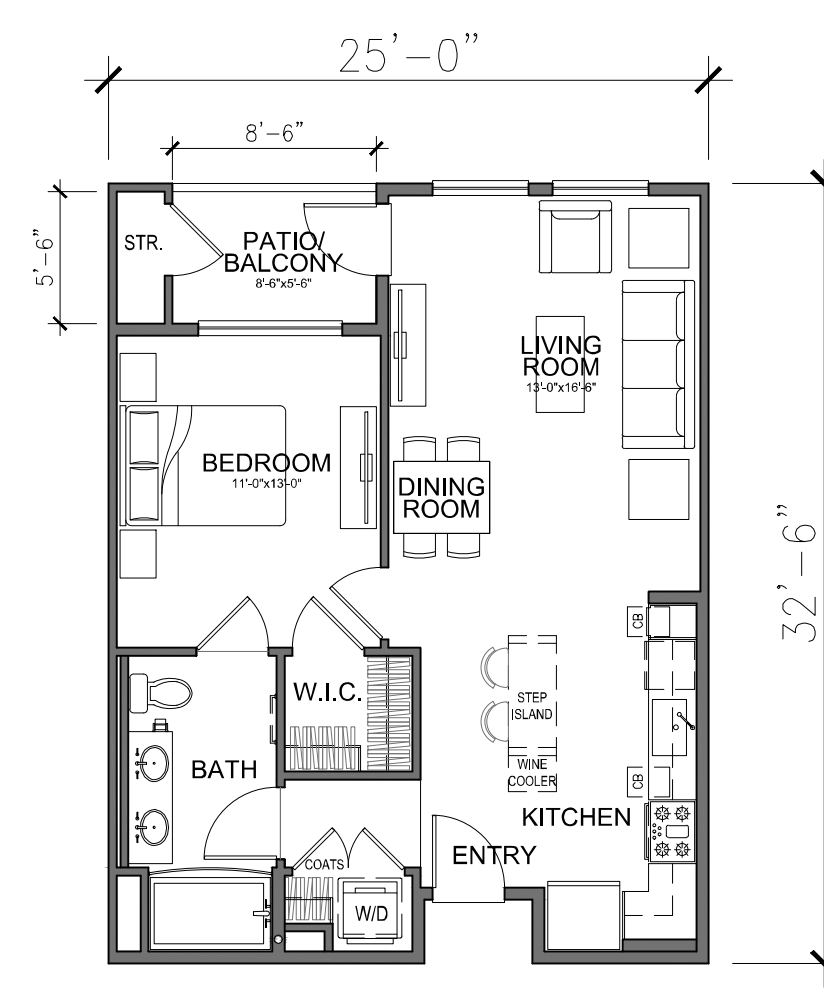
**UNIT S2**  
STUDIO  
LIVABLE AREA: 539 SQ. FT.  
PATIO/ BALCONY: 42 SQ. FT.



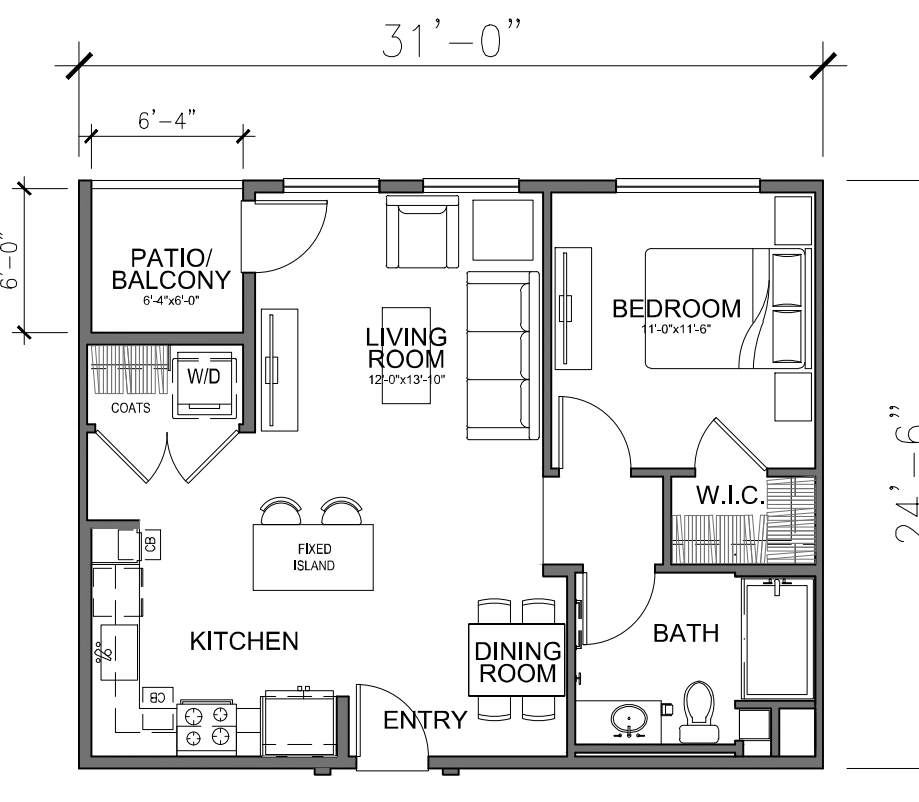
**UNIT S2B**  
STUDIO  
LIVABLE AREA: 602 SQ. FT.  
PATIO/ BALCONY: 48 SQ. FT.



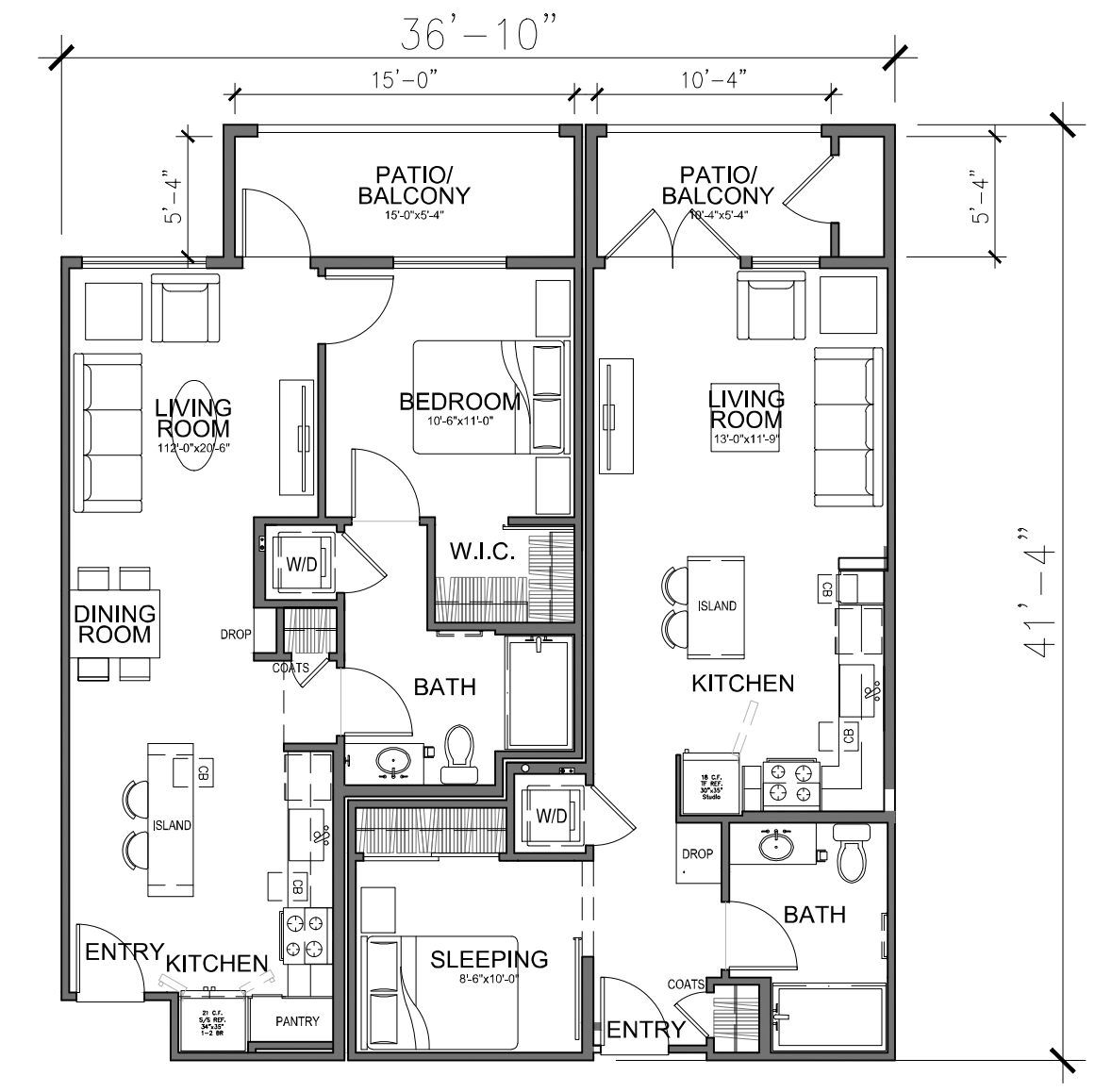
**UNIT A1**  
1 BDRM - 1 BATH  
LIVABLE AREA: 729 SQ. FT.  
PATIO/ BALCONY: 47 SQ. FT.



**UNIT A2**  
1 BEDROOM - 1 BATH  
LIVABLE AREA: 735 SQ. FT.  
PATIO/ BALCONY: 47 SQ. FT.

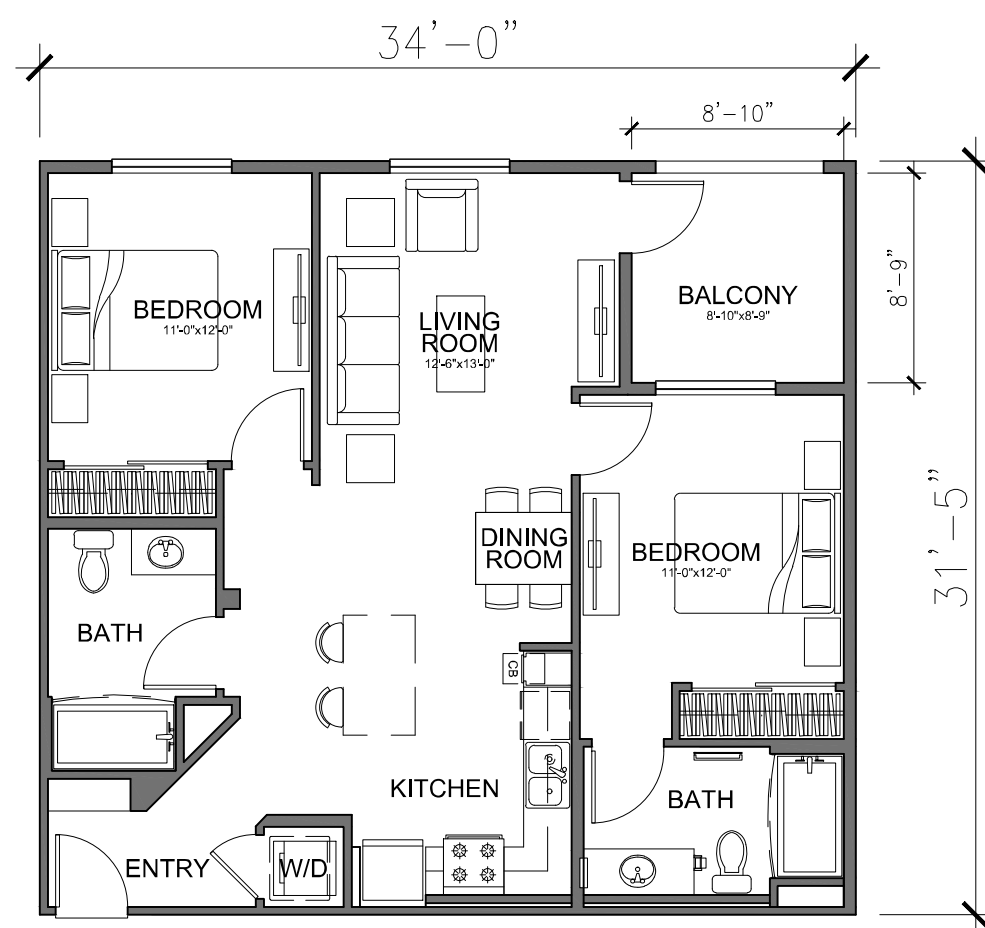


**UNIT A3**  
1 BEDROOM - 1 BATH  
LIVABLE AREA: 716 SQ. FT.  
PATIO/ BALCONY: 38 SQ. FT.

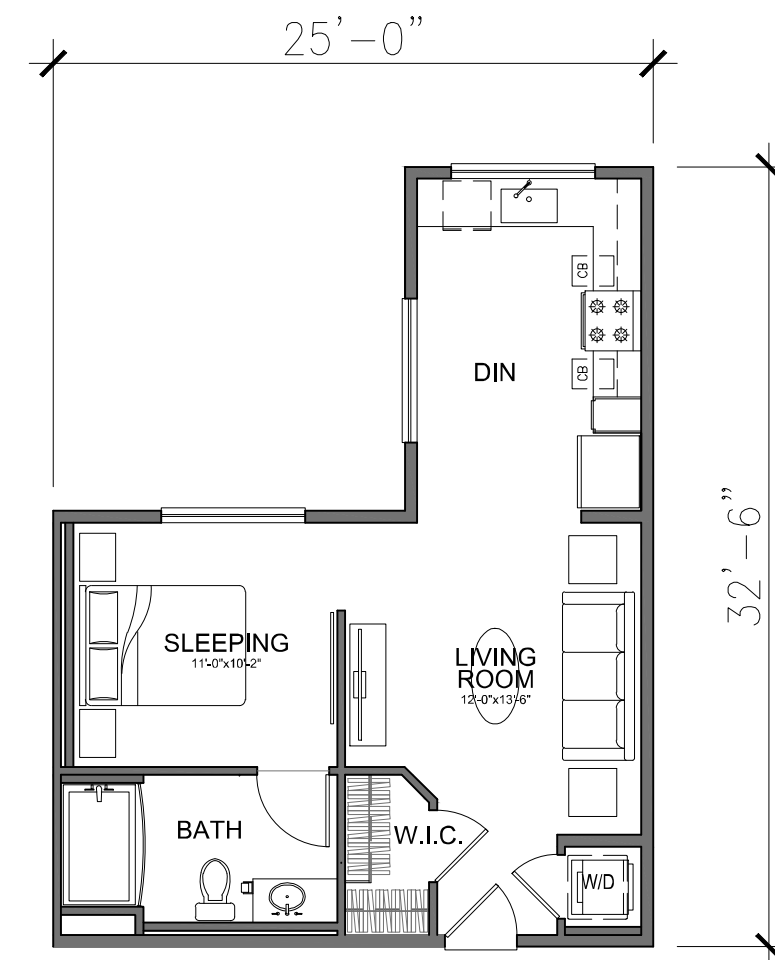


**UNIT A4**  
1 BDRM - 1 BA  
LIVABLE AREA: 675 SQ. FT.  
PATIO/ BALCONY: 80 SQ. FT.

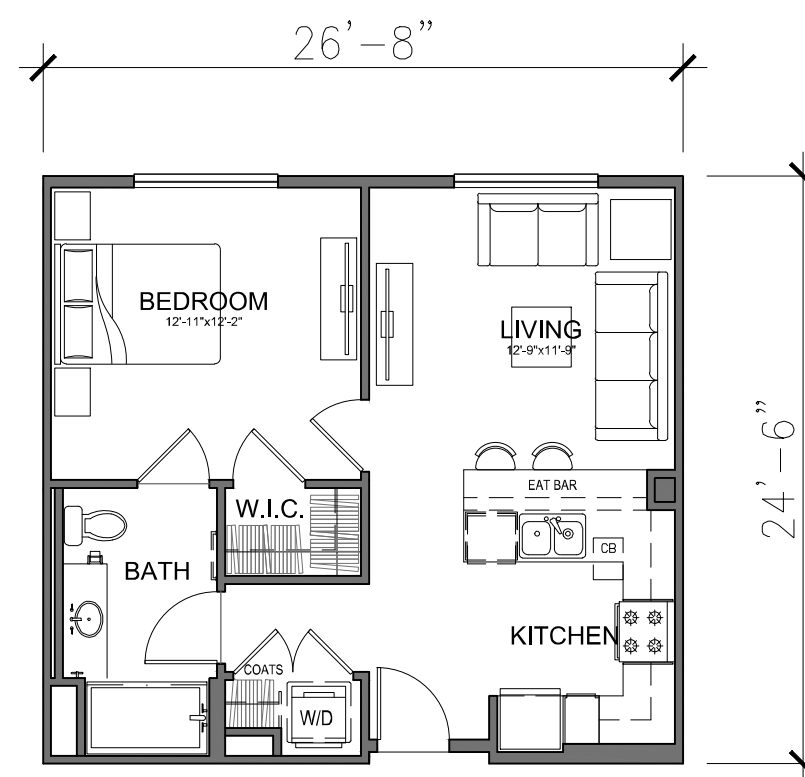
**UNIT S1**  
STUDIO  
LIVABLE AREA: 610 SQ. FT.  
PATIO/ BALCONY: 55 SQ. FT.



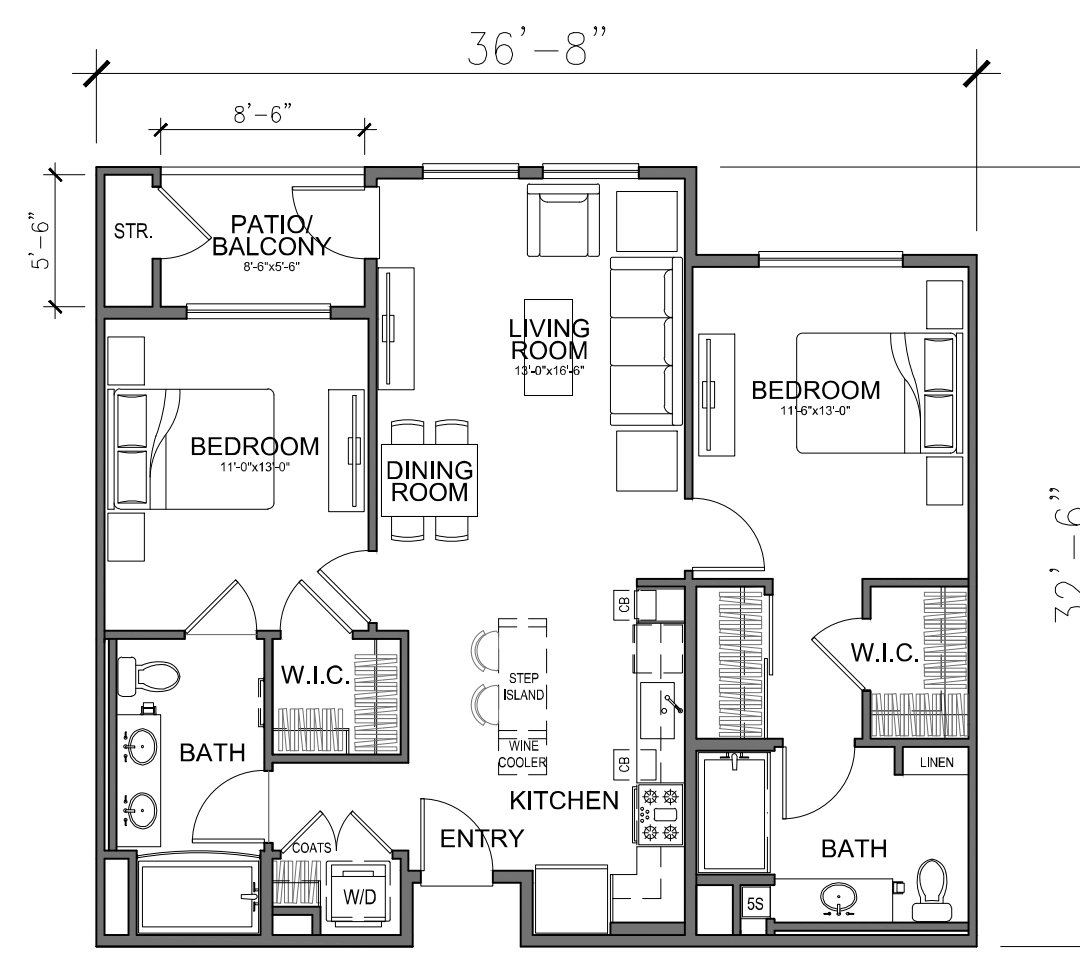
**UNIT B4**  
2 BDRM - 2 BATH  
LIVABLE AREA: 982 SQ. FT.  
PATIO/ BALCONY: 77 SQ. FT.



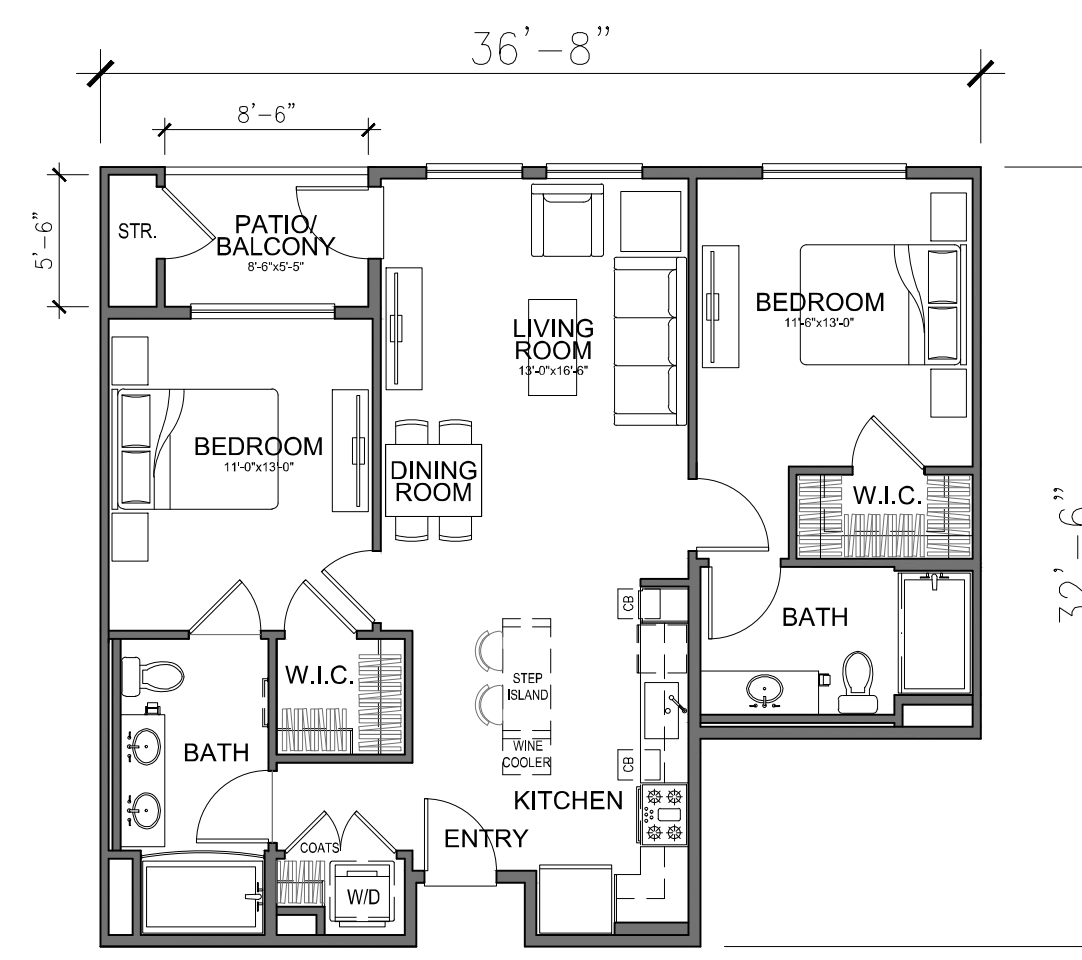
**UNIT S3**  
STUDIO  
LIVABLE AREA: 602 SQ. FT.



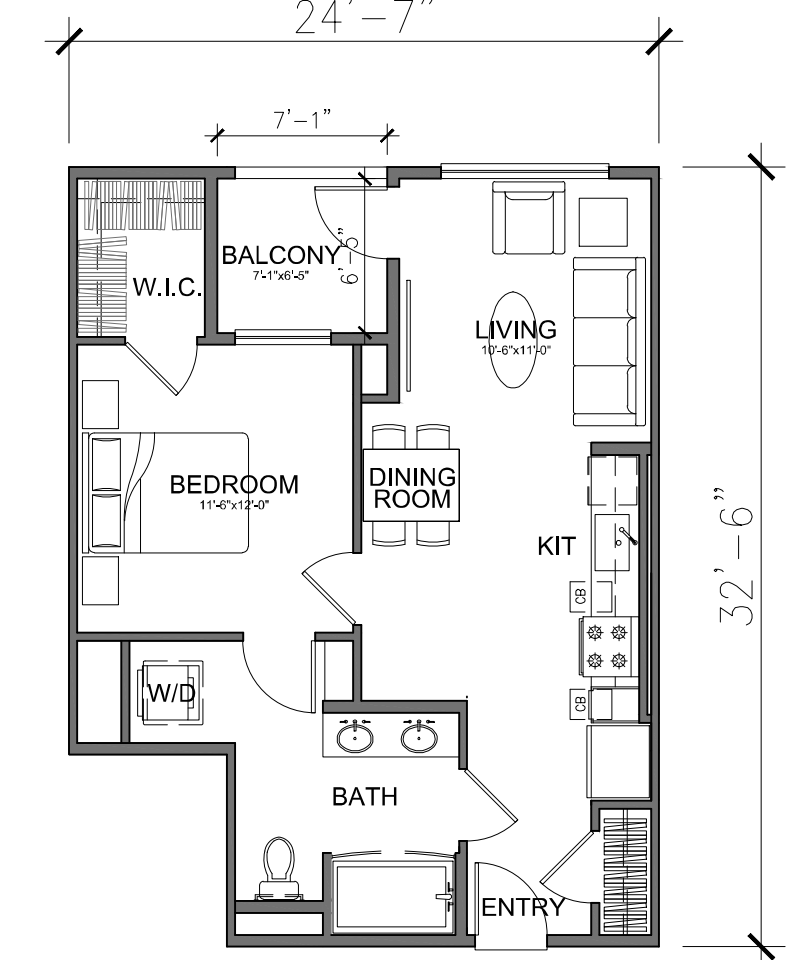
**UNIT A5**  
1 BEDROOM - 1 BATH  
LIVABLE AREA: 651 SQ. FT.  
PATIO/ BALCONY: 0 SQ. FT.



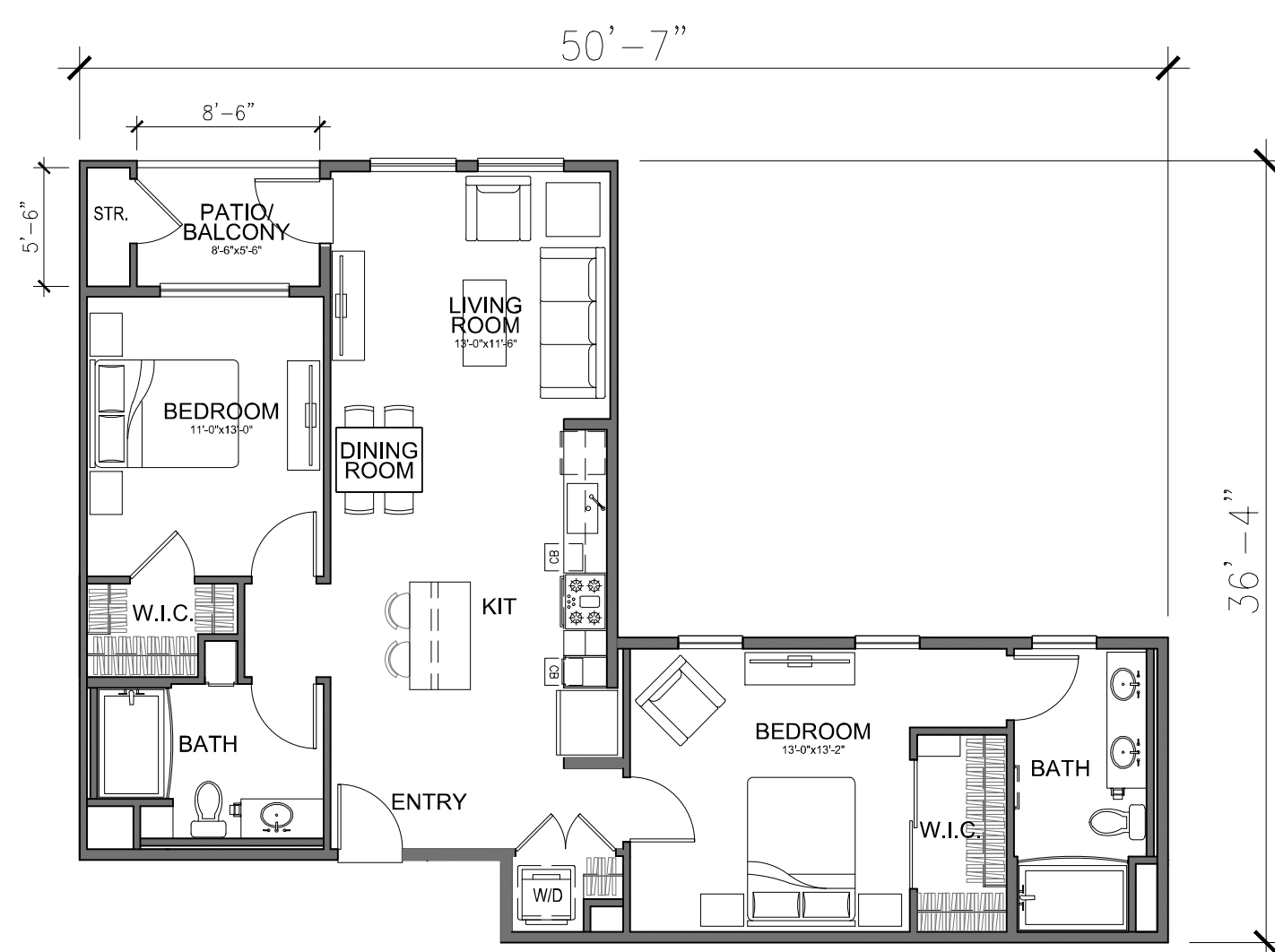
**UNIT B2**  
2 BEDROOM - 2 BATH  
LIVABLE AREA: 1072 SQ. FT.  
PATIO/ BALCONY: 47 SQ. FT.



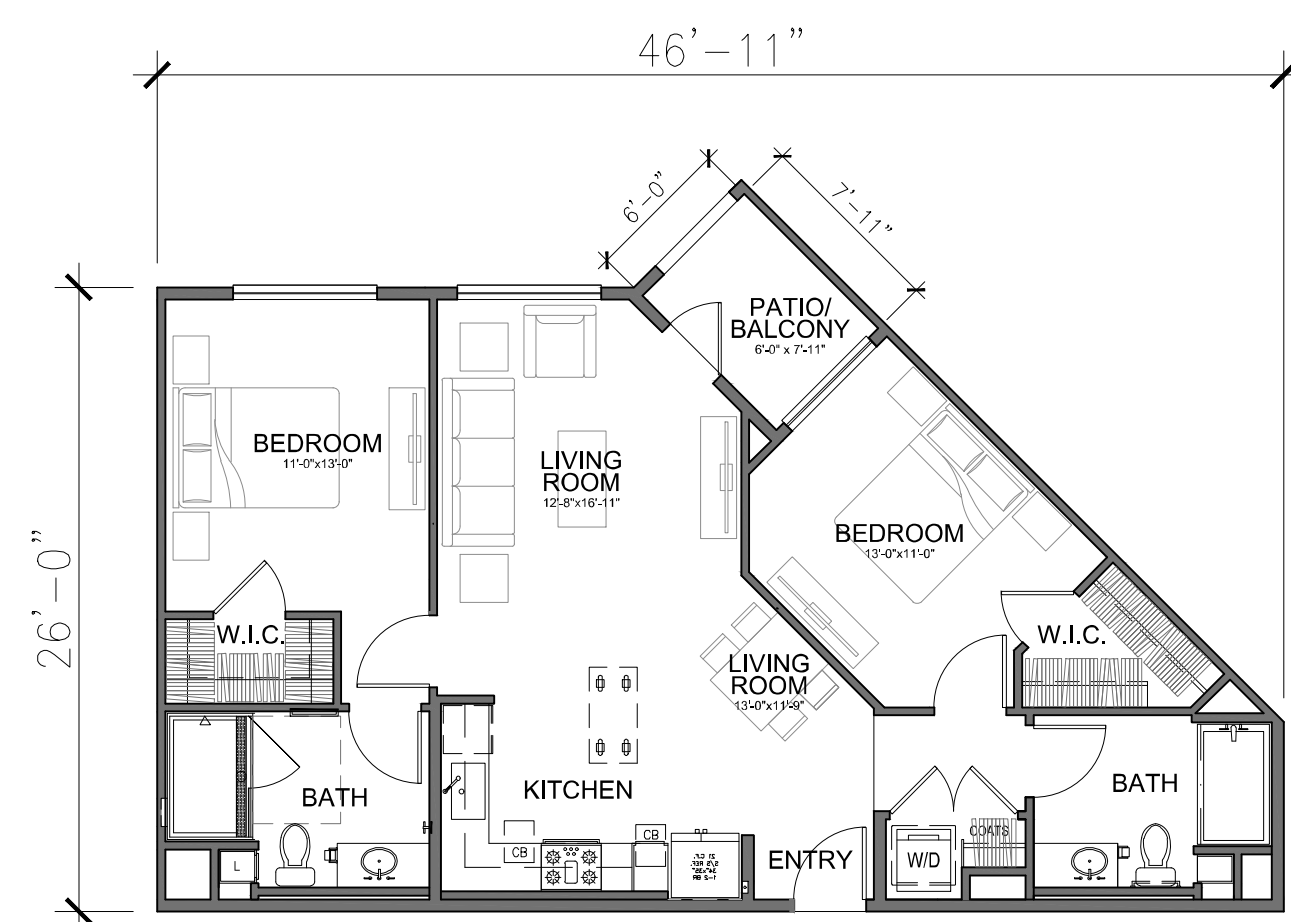
**UNIT B2C**  
2 BEDROOM - 2 BATH  
LIVABLE AREA: 1013 SQ. FT.  
PATIO/ BALCONY: 47 SQ. FT.



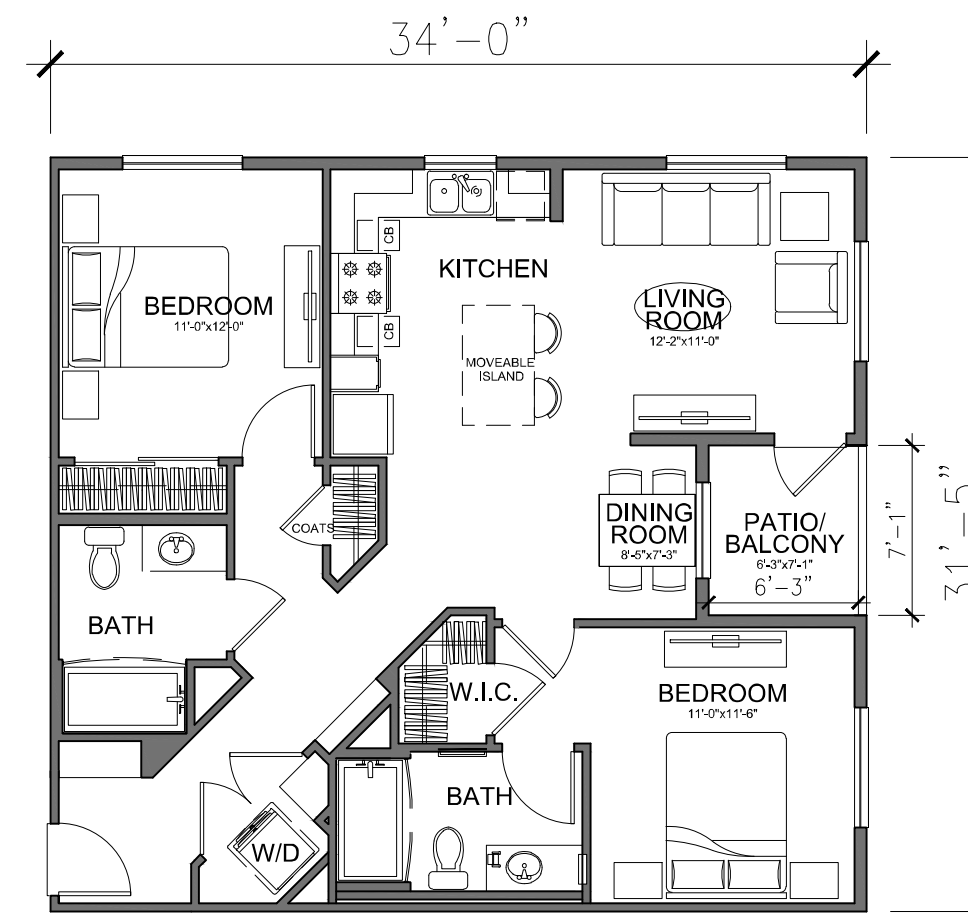
**UNIT A9**  
1 BEDROOM - 1 BATH  
LIVABLE AREA: 697 SQ. FT.  
BALCONY: 45 SQ. FT.



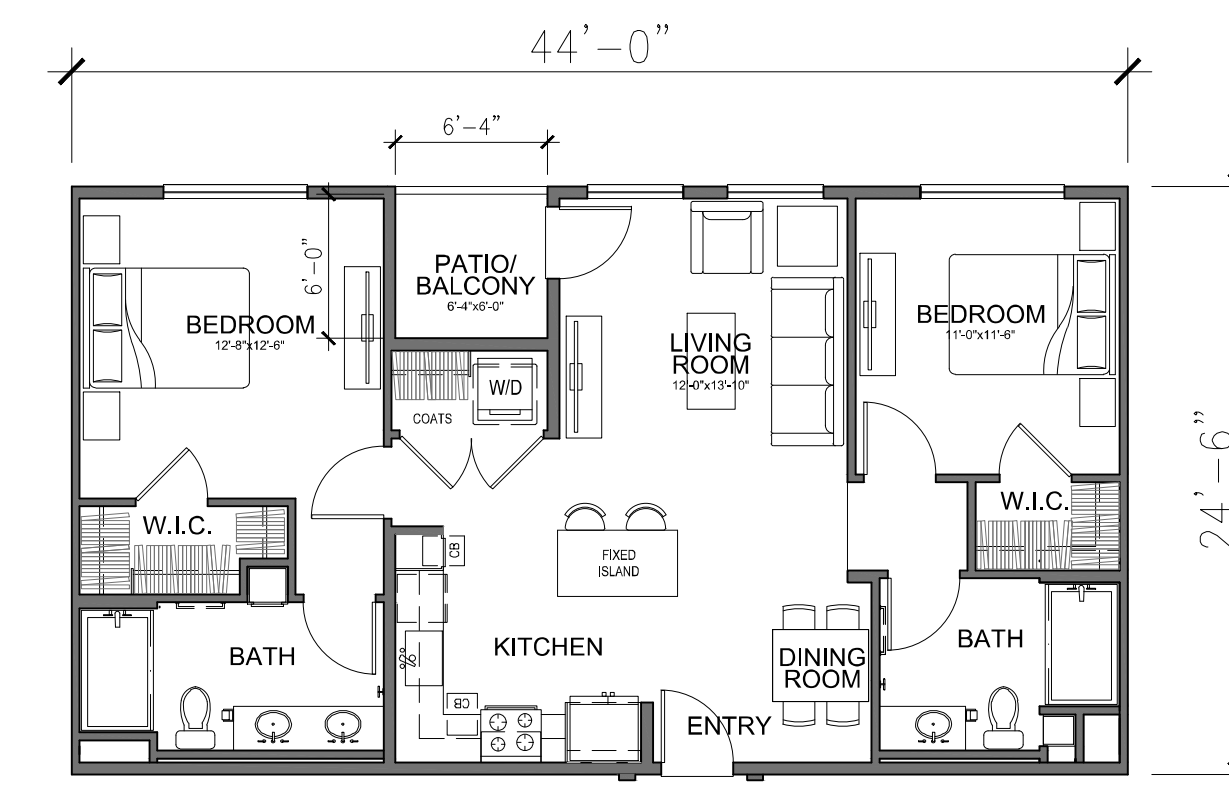
**UNIT B7**  
2 BDRM - 2 BATH  
LIVABLE AREA: 1131 SQ. FT.  
BALCONY: 47 SQ. FT.



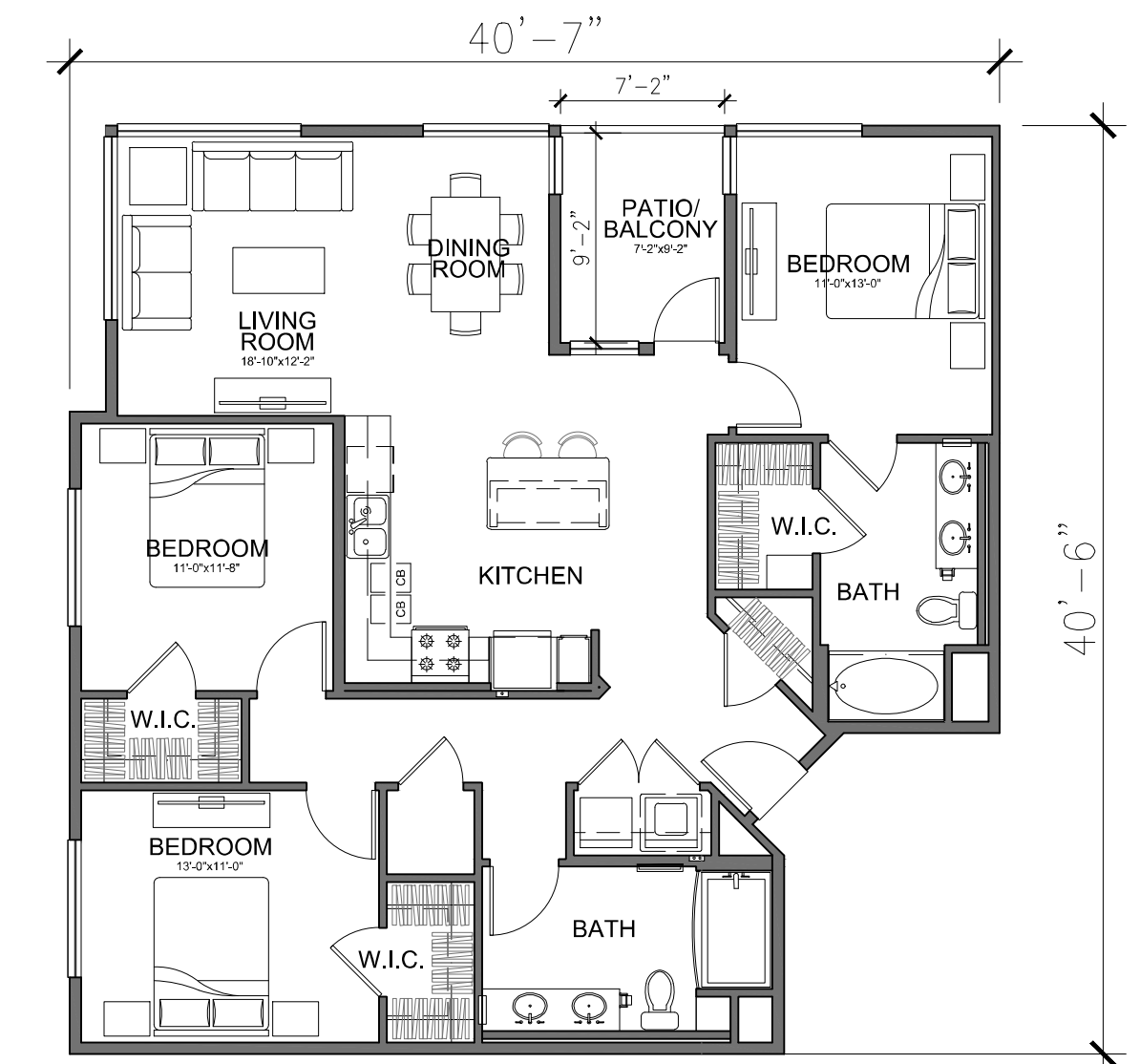
**UNIT B1**  
2 BDRM - 2 BATH  
LIVABLE AREA: 1023 SQ. FT.  
PATIO/ BALCONY: 47 SQ. FT.



**UNIT B3**  
2 BDRM - 2 BATH  
LIVABLE AREA: 1022 SQ. FT.  
PATIO/ BALCONY: 44 SQ. FT.



**UNIT B5**  
2 BEDROOM - 2 BATH  
LIVABLE AREA: 1038 SQ. FT.  
PATIO/ BALCONY: 38 SQ. FT.

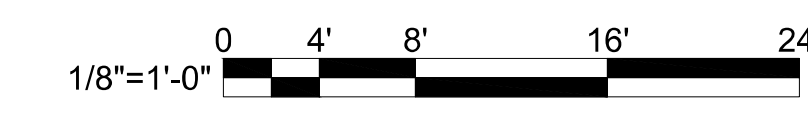


**UNIT C1**  
3 BEDROOM - 2 BATH  
LIVABLE AREA: 1425 SQ. FT.  
PATIO/ BALCONY: 66 SQ. FT.

**UNIT PLANS  
NORTH BUILDING ONLY**

**UNIT PLANS  
SOUTH & NORTH BUILDINGS**

**UNIT PLANS  
SOUTH BUILDING ONLY**



**RESIDENTIAL UNIT PLANS**  
North and South Buildings



**A8.0**

Scale 1" = 8'  
Job No. 2017-628  
Date 08-21-2020