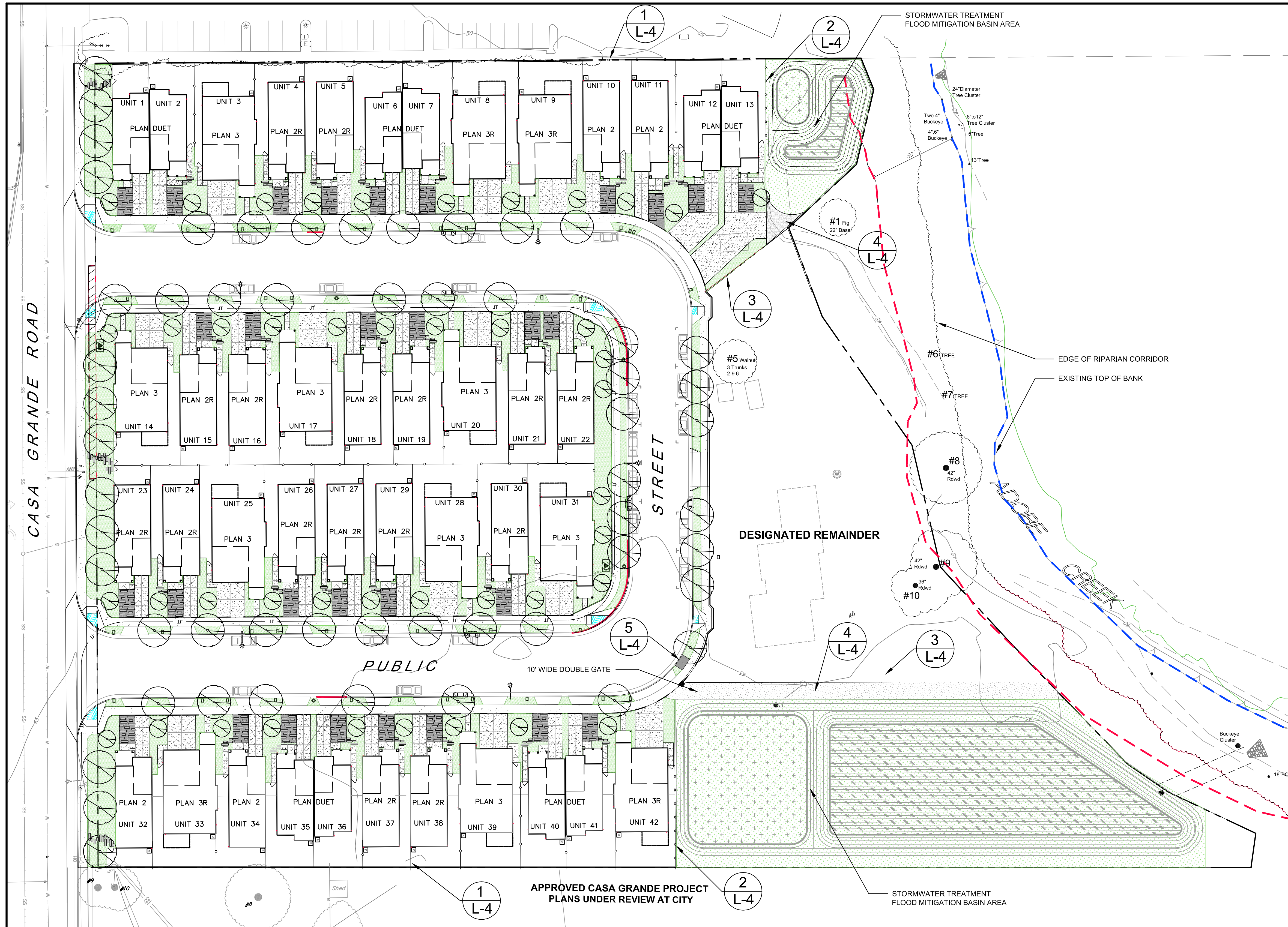


REVISIONS BY	DATE



CONCEPTUAL LANDSCAPE LEGEND

SYMBOL	BOTANICAL NAME	COMMON NAME	QTY.	**WATER USE	CONTAINER SIZE	SIZE (HxW)	REMARKS		
TREES	ARBUTUS MARINA PISTACHIA CHINENSIS	STRAWBERRY TREE CHINESE PISTACHE	55	L	24" BOX	20'x30' 20'x30'	NN, E. STREET TREES NN, D. STREET TREES		
	CERCIS CANADENSIS 'MERLOT' OLEA 'WILSONI'	MERLOT REDBUD FRUITLESS OLIVE	42	M L	36" BOX 24" BOX	15'x12' 15'x15'	NN, D. STD. FRONT YARD ACCENT TREE NN, E. STD. FRONT YARD ACCENT TREE		
	DODONAEA VISCOSA 'PURPUREA' PODOCARPUS ELONGATUS 'MONMAY' HETEROMELES ARBUTIFOLIA	PURPLE HOPSEED BUSH ICEE BLUE YELLOW-WOOD TOYON		L U L	5 GAL 15 GAL 5 GAL	12'x6' 8'x5' 8'x6'	E. NN NN, E. CN, E		
FOUNDATION PLANTS	CAREX TESTACEA 'PRAIRIE FIRE' JUNCUS PATENS 'CARMENS GRAY' LIMNODIUM CONVERTIFOLIA SSP. RUBIGINO 'SEASCAPE' MULLENBERGIA CAPILLARIS 'REGAL MIST' CALAMAGROSIS X ACUTIFLORA 'KARL FORDERSTEIN' MULLENBERGIA RIGENS MYRTUS COMMUNIS 'COMPACTA VAREGATA' COPROSMA REPENS 'PACIFIC SUNSET' DAPHNE ODOEA 'AURO-MARGINATA' EUONYMUS JAPONICA 'GREEN SPIRES' LAGERSTROEMIA INDICA 'RED FILL' LOROPETALUM 'CRIMSON FIRE' NANDINA DOMESTICA 'FIREPOWER' ROSA X CARPET 'AMBER' SPIRAEA X BUMALDA 'GOLDFLAME' ROSA CALIFORNICA OLEA EUROPEA 'LITTLE OLLIE'	PRAIRIE FIRE SEDGE CARMENS GRAY RUSH SEASCAPE MAT RUSH PINK MUHLY GRASS FEATHER REED GRASS DEER GRASS VARIEGATED DWARF MYRTLE PACIFIC SUNSET MIRROR PLANT WINTER VARIEGATED DAPHNE GREEN SPIRES JAPANESE SPINDLE RED FILL CRAPE MYRTLE DWARF CHINESE FRINGE FLOWER FIREPOWER HEAVENLY BAMBOO AMBER CARPET ROSE GOLDFLAME SPIRAEA CALIFORNIA ROSE DWARF OLIVE		M L L M L L L L L L L L L M M L L	1 GAL 1 GAL 5 GAL 1 OR 5 GAL 1 GAL 1 OR 5 GAL 5 GAL 5 GAL 5 GAL 5 GAL 5 GAL 5 GAL 5 GAL 5 GAL 5 GAL 5 GAL 1 GAL	2'x2' 2'x2' 1'x2' 3'x3' 3'x2' 3'x3' 3'x2' 3'x2' 5'x3' 5'x3' 4'x3' 6'x2' 2'x3' 4'x4' 2'x2' 2.5'x3' 4'x3' 3'x3' 1'x1' 1.5'x1.5' 2'x3' 2'x2' 2'x2' 1 GAL 1 GAL 1 GAL 1 GAL	NN CN NN NN NN CN E. NN E. NN E. NN D. NN E. NN E. NN D. NN D. NN D. NN CN, D. NN, E.		
	PERENNIALS/GROUNDCOVERS	ACHILLEA 'MOONSHINE' AGAPANTHUS 'TINKER BELL' PHORMIUM 'MAORI MAIDEN' EPILOBIUM CANUM EUPHORBIA X MARTINI 'ASCOT RAINBOW' IRIS DOUGLASSIANA LAVANDULA STOECHAS PENDUNCULATA 'GHOSTLY PRINCESS' MIMULUS AURANTICUS STACHYS BYZANTINA 'BIG EARS' SALVIA 'POZO BLUE' TEUHRUM CHAMAEDRYS EUPATORIUM PURPUREUM 'BABY JOE' SOLIDAGO CALIFORNICA FESTUCA GLAUCA GAZANIA 'KISS WHITE' SEDUM SPURRIUM 'VOODOO'	YARROW VARIEGATED LILY OF THE NILE MAORI MAIDEN FLAX CALIFORNIA FUCHSIA ASCOT RAINBOW SPURGE PACIFIC COAST IRIS GHOSTLY PRINCESS SPANISH LAVENDER STICKY MONKEY FLOWER BIG EARS LAMBS EARS GREY MUSK SAGE WALL GERMANDER DWARF JOE PYE WEED GOLDENROD BLUE FESCUE KISS WHITE GAZANIA VOODOO STONECROP		L M L L L L L L L L M L L L L L L	1 GAL 1 GAL 5 GAL 5 GAL 1 GAL 1 GAL 1 GAL 1 GAL 1 GAL 1 GAL 1 GAL 1 GAL 1 GAL 1 GAL 1 GAL 1 GAL 1 GAL	1.5'x2' 1'x1' 1.5'x1.5' 2'x3' 2'x2' 2'x2' 3'x3' 1'x2' 1'x2' 4'x6' 2'x3' 4'x3' 3'x3' 1'x1.5' 6'x12' 6'x24'	CN NN NN CN NN CN NN CN NN NN NN SPACE 18" O.C. NN SPACE 12" O.C. NN SPACE 24" O.C.	
		SITE STORMWATER TREATMENT/FLOOD MITIGATION BASIN - NATIVE GRASS SEED AND SLOPE STABILIZATION MIX.							
			ELYMIUS GLAUCCUS BROMUS CARINATUS ESCHOLZIA CALIFORNICA	BLUE WILDRYE CALIFORNIA BROME CALIFORNIA POPPY					

LANDSCAPE PLAN

1"=30'

GENERAL LEGEND

	SITE BOUNDARY
	TOP/TOE OF SLOPE
	EXISTING FENCE
	8" DECORATIVE WOOD FENCE, SEE DETAIL 1, SHEET L-4.
	6" WOOD AND WIRE FENCE, SEE DETAIL 2, SHEET L-4
	42" WOOD AND WIRE FENCE, SEE DETAIL 3, SHEET L-4
	CONCRETE WALKWAY, SEE SHEET L-3 FOR IMAGE OF SIDE YARD ACCESS PATHS
	GRANITE PAVING (USED FOR MAINTENANCE ACCESS PAVING AT BASIN AREAS) SEE DETAIL 9, SHEET L-4
	PLANK PAVER CONCRETE STEP STONES (12"x24", 30", 36")
	PLANK PAVERS SET IN DECOMPOSED GRANITE OR GRAVEL
	4-6" NOYO RIVER COBBLE WITH WEED BARRIER, SEE LANDSCAPE PALETTE, SHEET L-3
	STREET LIGHT PER SEE PHOTOMETRIC PLANS AND ASSOCIATED MANUFACTURER SPECS.
	DECORATIVE CLUSTER MAILBOX UNIT, SEE DETAIL 4, SHEET L-4.
	EXISTING TREE TO REMAIN APPROXIMATE DRIFLINE, SEE ARBORIST REPORT BY URBAN FORESTRY, DATED MARCH 2021 FOR EXISTING TREE INVENTORY AND TREE PROTECTION MEASURES, AS WELL AS A DESCRIPTION SUMMARY OF THE EXISTING TREES WITHIN THE RIPARIAN CORRIDOR.
	RIPARIAN BOUNDARY

LANDSCAPE NOTES

- SEE SHEET L-2 FOR TYPICAL PLANTING LAYOUTS AND MORE DETAILED TYPICAL PLANT SCHEDULE
- SEE SHEET L-3 LANDSCAPE PALETTE FOR IMAGES OF PROPOSED LANDSCAPE IMAGERY.
- SEE SHEET L-4 FOR PRELIMINARY LANDSCAPE DETAILS.
- WITH EXCEPTION OF THE TREES ALL PLANTING SIZES AND QUANTITIES SHOWN ARE APPROXIMATE.
- SEE CIVIL PLANS FOR GRADING AND DRAINAGE.
- FOR LIGHTING INFORMATION REFER TO THE PHOTOMETRIC PLAN AND ASSOCIATED LIGHTING DETAILS FROM LIGHTING CONSULTANT.
- REFER TO ARCHITECTURAL PLANS FOR ALL DWELLING UNITS FLOOR PLANS, ELEVATIONS, 3D RENDERINGS AND OTHER BUILDING ARCHITECTURE RELATED ITEMS.
- REFER TO SUPPLEMENTARY APPENDIX A FOR PRELIMINARY MAXIMUM APPLIED WATER ALLOWANCE CALCULATIONS.
- ALL PROPOSED LANDSCAPING AND FENCING SHALL BE LOCATED OUTSIDE THE RIPARIAN BOUNDARY. SEE CURRENT ARBORIST REPORT BY URBAN FORESTRY FOR A DESCRIPTION OF TREES WITHIN THE RIPARIAN AREA.

IRRIGATION NOTES

IRRIGATION NOTE:
IRRIGATION DESIGN WILL COMPLY WITH CITY OF PETALUMA WATER CONSERVATION REGULATIONS ORDINANCE CHAPTER 15.17 OF THE CITY MUNICIPAL CODE.

THIS LANDSCAPE PROPOSES TO USE:

- LOW VOLUME DRIP IRRIGATION SYSTEM
- A CONTROLLER WITH AN ET SENSOR
- TREE BUBBLERS THAT IRRIGATE AT THE TREES ROOT ZONE
- CHECK VALVES AS NEEDED
- FLOW SENSOR
- MASTER CONTROL VALVE
- DROUGHT TOLERANT, MOSTLY LOW WATER USE PLANT MATERIAL
- AT MINIMUM 3" OF BARK MULCH IN ALL LANDSCAPE AREAS WHERE SOIL IS EXPOSED.
- PLANTS WITH SIMILAR WATER REQUIREMENTS WILL GROUPED TOGETHER ON THE SAME VALVES.

PRELIMINARY LANDSCAPE PLAN
CREEKWOOD CONDOMINIUM PROJECT
 270 & 280 CASA GRANDE ROAD APN 017-040-051 & -016
 PETALUMA CALIFORNIA

STEVEN J. LAFRANCHI & ASSOCIATES, INC.
 CIVIL ENGINEERS - LAND SURVEYORS
 LAND PLANNERS - LANDSCAPE ARCHITECTS
 PETALUMA THEATRE SQUARE
 PETALUMA, CALIFORNIA 94952
 (707) 762-3122 FAX (707) 762-3259

DATE: 2021.03.24
 SCALE: 1"=30'
 DESIGN: S.J. LAFRANCHI, J.G. NICK, A.C. NICK
 DRAWING: ORK HSM JTG NCF
 CHECK: S.J.
 JOB: CREEKWOOD
 JOB No: 192119
 SHEET
L-1
 OF 20 SHEETS

