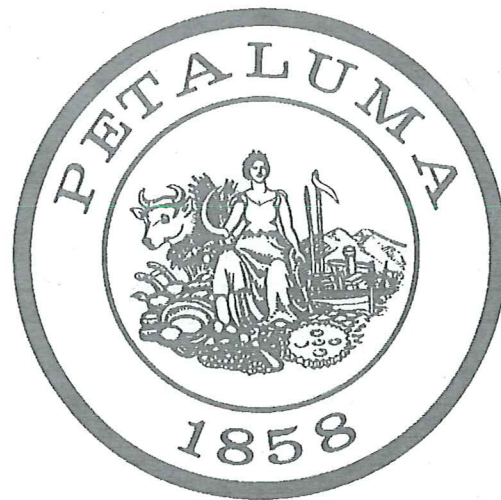


# City of Petaluma, California

## MULTI USE PATH PROJECT

### LYNCH CREEK TRAIL / PAYRAN SECTION

C14502009



MAYOR  
Teresa Barrett

COUNCIL MEMBERS  
Brian Barnacle  
D'Lynda Fischer  
Mike Healy  
Dave King  
Kevin McDonnell  
Dennis Pocekay

CITY MANAGER  
Peggy Flynn

DIRECTOR OF PUBLIC WORKS & UTILITIES  
Jason Beatty, P.E.



**LOCATION MAP**  
SCALE: N.T.S.

**RECORD PLAN**

I \_\_\_\_\_ HEREBY STATE THAT THESE RECORD PLAN CHANGES ARE COMPLETE FROM INFORMATION FURNISHED BY THE PROJECT CONTRACTOR, SOILS ENGINEER AND MY OFFICE. I HEREBY STATE THAT TO THE BEST OF MY KNOWLEDGE THE THE WORK WAS DONE IN ACCORDANCE WITH THE FINAL APPROVED PLANS. THE ENGINEER AND THE CITY WILL NOT BE RESPONSIBLE FOR ANY ERRORS OR OMISSIONS WHICH HAVE BEEN INCORPORATED INTO THIS DOCUMENT AS A RESULT. FIELD VERIFICATION OF CRITICAL FACTS AND DATA SHOULD BE MADE IF THESE DOCUMENTS ARE TO BE USED AS A BASIS FOR FUTURE WORK. ENGINEER'S SIGNATURE \_\_\_\_\_ DATE: \_\_\_\_\_

**SHEET INDEX**

- G1 COVER SHEET
- G2 ABBREVIATIONS, SYMBOLS, REVISIONS
- G3 GENERAL NOTES, SURVEY CONTROL
- C1 PLAN AND PHOTOGRAPHS
- C2 PLAN AND PHOTOGRAPHS
- P1 PHOTOGRAPHS
- D1 DETAILS

ALL PROJECT PLANS HAVE BEEN PREPARED AND REVIEWED TO COMPLY WITH CURRENT AMERICANS WITH DISABILITIES ACT (ADA) REQUIREMENTS AND/OR THE CALIFORNIA BUILDING STANDARDS CODE (CBCS).

THESE PROJECT PLANS CONTAIN ELEMENT(S) THAT ARE NOT "TECHNICALLY FEASIBLE" AND/OR CAN'T MEET THE APPLICABLE CBCS BECAUSE IT WOULD CREATE AN "UNREASONABLE HARDSHIP." PLEASE SEE THE WRITTEN ANALYSIS SUPPORTING THIS DETERMINATION FILED UNDER THE PROJECT FILE.

DESIGNED BY: *Evelyn Onderdonk* 3/11/21  
SIGNATURE \_\_\_\_\_ DATE \_\_\_\_\_

APPROVED BY: *Ken Eichstaedt*  
Ken Eichstaedt P.E. C42058, T.E.  
Senior Traffic Engineer

DESIGNED BY: *Evelyn Onderdonk*  
Evelyn Onderdonk P.E. C53654  
Civil Engineer

	SIGNATURE	DATE
CITY ENGINEER		
ENGINEERING MANAGER		
FIRE MARSHAL		
PARKS		
PLANNING		
POLICE		
UTILITY MANAGER		

DATE: MARCH 2021  
DESIGNED BY: EMO  
DRAWN BY: ETL  
CHECKED BY: KEE

PROJECT NO.  
C16101823



**CITY OF PETALUMA**  
PUBLIC WORKS & UTILITIES  
202 N. McDowell Blvd., PETALUMA, CALIFORNIA, 94954  
PH. 707-778-4546 FAX. 707-778-4508

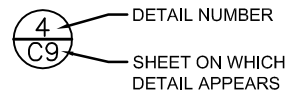


MULTI-USE PATH - LYNCH CREEK TRAIL  
PAYRAN SECTION  
COVER SHEET

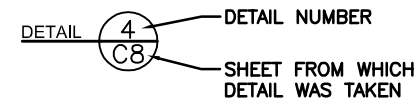
SHEET  
**G1**  
1 OF 7

**DETAIL NUMBERING**

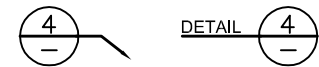
DWG. WHERE DETAIL IS TAKEN:



DWG. WHERE DETAIL APPEARS:

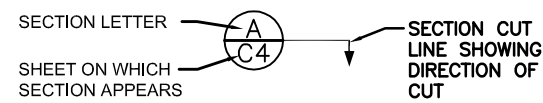


IF DETAIL APPEARS ON THE SAME DWG. IT IS TAKEN FROM:

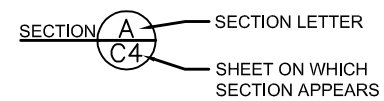


**SECTION NUMBERING**

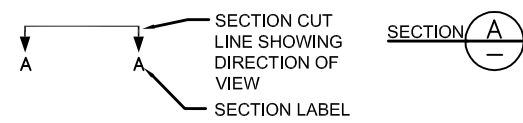
DWG. WHERE SECTION IS TAKEN:



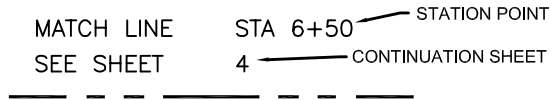
DWG. WHERE SECTION APPEARS:



IF SECTION APPEARS ON THE SAME DWG. IT IS TAKEN FROM:



**MATCH LINE**



**ABBREVIATIONS**

AB	AGGREGATE BASE	IRR	IRRIGATION
ABND	ABANDONED	JT	JOINT TRENCH
AC	ASPHALTIC CONCRETE	LG	LIP OF GUTTER
ACP	ASBESTOS CEMENT PIPE	MH	MANHOLE
CDF	CONTROL DENSITY FILL	MON	MONUMENT
CI	CAST IRON	PCC	PORTLAND CEMENT CONCRETE
CIPP	CURED IN PLACE PIPE	PL	PLASTIC
CL	CENTERLINE	PVC	POLYVINYL CHLORIDE
CMP	CORRUGATED METAL PIPE	RC	RELATIVE COMPACTION
CO	CLEAN OUT	RCP	REINFORCED CONCRETE PIPE
CR	CURB RETURN	SS	SANITARY SEWER
DIP	DUCTILE IRON PIPE	SQFT	SQUARE FEET
EG	EXISTING GRADE	STA	STATION
EL	ELEVATION	STL	STEEL
ELEC	ELECTRIC	SD	STORM DRAIN
EP	EDGE OF PAVEMENT	SL	STREET LIGHT
EX	EXISTING	TEL	TELEPHONE
FC	FACE OF CURB	TC	TOP OF CURB
FDC	FIRE DEPT CONNECTION	TP	TOP OF PIPE
FG	FINISH GRADE	TV	TV CABLE
FH	FIRE HYDRANT	TYP	TYPICAL
FL	FLOW LINE	UTILP	UTILITY POLE
FO	FIBER OPTIC CABLE	VCP	VITRIFIED CLAY PIPE
G	GAS	W	WATER
HDPE	HIGH DENSITY POLYETHYLENE	WS	WATER SERVICE
INV	INVERT		

**SYMBOLS**

**PROPOSED**

**EXISTING**

		AIR RELIEF VALVE
		BLOWOFF
		FIRE HYDRANT
		VALVE
		ZONE VALVE
		REDUCER
		CLEAN OUT
		MANHOLE
		WATER METER
		CATCH BASIN
		CATCH BASIN W/ GALLERY
		INLET
		END CAP
		UTILITY POLE
		UTILITY BOX
		MONUMENT
		ADDRESS
		SEWER MAIN AND LATERAL
		SEWER LATERAL TAP ACTIVE
		SEWER LATERAL TAP CAPPED
		WATER MAIN
		STORM DRAIN
		ELECTRIC CABLE
		GAS MAIN
		TELEPHONE CABLE
		TV CABLE
		STREET LIGHT AND CABLE
		CONSTRUCTION SIGN
		RIGHT OF WAY LINE
		TO BE ABANDONED
		TO BE REMOVED
		BORE LOCATION

**MATERIAL LEGEND**

	CONCRETE PAVEMENT WITH CONTROL JOINTS
	ROADWAY SIGN
	EXISTING CHAIN LINK FENCE

**RECORD DRAWING REFERENCE**

NO.	DATE	DESCRIPTION	BY

**PROJECT RESOURCE DATA (FOR CITY USE)**

PROJECT START	
PROJECT END	
PROJECT CONTRACTOR	
CONTRACTOR'S SUPER.	
UTILITY CONT.	
UTILITY CONT.	
UTILITY CONT.	
SEWER PIPE, MH, CO	
STORM DRAIN PIPE, INLET	
WATER PIPE, VALVES, HDY.	
PROJECT MANAGER	
PROJECT INSPECTOR	
OTHER	

DATE: MARCH 2021  
 DESIGNED BY: ENO  
 DRAWN BY: ETL  
 CHECKED BY: KEE

PROJECT NO.  
 C16101823



**CITY OF PETALUMA**  
 PUBLIC WORKS & UTILITIES  
 202 N. McDowell Blvd., PETALUMA, CALIFORNIA, 94954  
 PH. 707-778-4546 FAX. 707-778-4508



**MULTI-USE PATH - LYNCH CREEK TRAIL  
 PAYRAN SECTION**  
**ABBREVIATIONS, SYMBOLS, REVISIONS**