

ABBREVIATIONS

A.F.F.	ABOVE FINISHED FLOOR
A.F.G.	ABOVE FINISHED GRADE
C	CONDUIT
CATV	CABLE TV
C.O.	CONDUIT ONLY
CU	COPPER
E.C.	ELECTRICAL CONTRACTOR
E	EMERGENCY LIGHT FIXTURE ON EMERGENCY GENERATOR OR INVERTER, SWITCHABLE, U.O.N.
EM	EMERGENCY LIGHT FIXTURE WITH BATTERY PACK, SWITCHABLE
EMS	ENERGY MANAGEMENT SYSTEM
(E)	EXISTING
EQPT	EQUIPMENT
(ER)	EXISTING EQUIPMENT TO BE RELOCATED
(EX)	EXISTING EQUIPMENT TO BE DISCONNECTED AND REMOVED
EXT	EXTERIOR
FMC	FLEXIBLE METALLIC CONDUIT
GFI	GROUND FAULT CIRCUIT INTERRUPTING TYPE RECEPTACLE
IDF	INTERMEDIATE DISTRIBUTION FRAME
L	LOCKABLE
LV	LOW VOLTAGE
MCB	MAIN CIRCUIT BREAKER
MDF	MAIN DISTRIBUTION FRAME
MFR	MANUFACTURER
MLO	MAIN LUGS ONLY
MTD	MOUNTED
(N)	NEW
N.E.C.	NATIONAL ELECTRICAL CODE
NEU	NEUTRAL
N.I.E.C.	NOT IN ELECTRICAL CONTRACT
O.A.H.	OVERALL HEIGHT
O.F.C.I.	OWNER FURNISHED, CONTRACTOR INSTALLED
P	INDICATES FIXTURES ON PHOTOCELL CONTROL
PA	PUBLIC ADDRESS
PNL	PANEL
S.A.D.	SEE ARCHITECTURAL DRAWINGS
STC	SIGNAL TERMINAL CABINET
TC	INDICATES FIXTURES ON TIMECLOCK CONTROL
TELE	TELEPHONE
TVSS	TRANSIENT VOLTAGE SURGE SUPPRESSION
U.O.N.	UNLESS OTHERWISE NOTED
VAV	VAV BOX, SEE MECHANICAL DIVISION DRAWINGS FOR LOCATIONS. PROVIDE TOGGLE TYPE DISCONNECT SWITCH
WP	WEATHER PROOF, NEMA 3R
WPU	WEATHER PROOF WHILE IN USE

SYMBOLS LIST

	WEATHERPROOF ENCLOSURE
	FIRE ALARM SYSTEM END-OF-LINE RESISTOR
	CONDUIT AND WIRE CONCEALED IN CEILING OR WALL
	CONDUIT AND WIRE CONCEALED IN OR UNDER SLAB OR UNDERGROUND
	CONDUIT AND WIRE RUN EXPOSED
	CROSSMARKS INDICATE QUANTITY OF #12 CONDUCTORS PLUS PARITY SIZED GROUND CONDUCTOR (INCLUDED BUT NOT INDICATED), NO HATCHMARKS INDICATES (2) #12 CONDUCTORS PLUS PARITY SIZED GROUND CONDUCTOR, U.O.N.
	GROUND WIRE
	WIRE SIZE 10 AWG FOR ALL CONDUCTORS, INCLUDING GROUND WIRE, THROUGHOUT THE COMPLETE CIRCUIT
	FLEXIBLE METALLIC CONDUIT
	HOMERUN TO PANELBOARD OR TERMINAL BOARD, AS NOTED ON PLANS
	COMPLETE CONNECTION OF EQUIPMENT
	CONDUIT STUBBED OUT, CAPPED AND MARKED
	CONDUIT TURNED UP
	CONDUIT TURNED DOWN
	#4/0 COPPER GROUNDING ELECTRODE CONDUCTOR, U.O.N.
	MECHANICAL EQUIPMENT DESIGNATION - SEE MECHANICAL PLANS
	DETAIL DESIGNATION - SEE DETAIL 3, SHEET E-6
	NUMBERED SHEET NOTE
	UTILITY METER
	CURRENT TRANSFORMERS
	CIRCUIT BREAKER, NUMBER INDICATES 30A 3-POLE
	FEEDER SIZE - SEE POWER SINGLE LINE DIAGRAMS & FEEDER SCHEDULE

SYMBOLS LIST

ALL SWITCH AND CONTROL MOUNTING HEIGHTS OF 48" SHALL BE TO TOP OF THE DEVICE BOX. ALL RECEPTACLES WITH MOUNTING HEIGHT OF UP TO 18" SHALL BE NO LOWER THAN 15" TO BOTTOM OF THE DEVICE BOX, TYPICAL, U.O.N.

	INDICATES LUMINAIRE TYPE, SEE LUMINAIRE SCHEDULE
	POLE ARM-MOUNTED AREA LUMINAIRE, ARROW INDICATES DIRECTION OF LIGHT DISTRIBUTION WHEN NOT PARALLEL TO ARM ORIENTATION
	LINE VOLTAGE SINGLE POLE TOGGLE SWITCH, LETTER ADJACENT INDICATES RESPECTIVE ZONE CONTROLLED, UP 48" U.O.N.
	LINE VOLTAGE TWO POLE TOGGLE SWITCH, UP 48" U.O.N.
	LINE VOLTAGE THREE-WAY TOGGLE SWITCH, UP 48" U.O.N.
	LINE VOLTAGE KEY OPERATED TOGGLE SWITCH
	LINE VOLTAGE MOTOR RATED TOGGLE SWITCH INSTALLED AT EQPT SHOWN
	LOW VOLTAGE SWITCH, UP 48" U.O.N.
	MAIN SWITCHBOARD, DISTRIBUTION PANEL OR MOTOR CONTROL CENTER
	FLUSH MOUNTED PANELBOARD, 6'-6" TO TOP
	SURFACE MOUNTED PANELBOARD, 6'-4" TO TOP
	FUSED EQUIPMENT DISCONNECT SWITCH WITH FUSE SIZE AS RECOMMENDED BY EQUIPMENT MANUFACTURER
	MOTOR DISCONNECT SWITCH; HORSEPOWER RATED, NON FUSE
	COMBINATION MOTOR STARTER & DISCONNECT
	MAGNETIC MOTOR STARTER
	MANUAL MOTOR STARTER WITH OVERLOAD PROTECTION
	MOTOR WITH FLEXIBLE CONDUIT CONNECTION AND DISCONNECT
	TRANSFORMER
	CONCRETE PULLBOX, SIZE AS REQUIRED OR SHOWN - CHRISTY OR EQUAL WITH LABELED LID PER USE
	COPPER GROUND ROD
	FLUSH WALL MOUNTED JUNCTION BOX, U.O.N.
	FLUSH WALL MOUNTED JUNCTION BOX, UP 18" U.O.N.
	20A 3P 125V DUPLEX RECEPTACLE, UP 18" U.O.N.
	20A 3P 125V DUPLEX RECEPTACLE, WEATHERPROOF, UP 18" U.O.N.
	20A 3P 125V DUPLEX RECEPTACLE, GROUND FAULT CIRCUIT INTERRUPTER TYPE, UP 18" U.O.N.
	20A 3P 125V DUPLEX RECEPTACLE, ISOLATED GROUND TYPE, UP 18" U.O.N.
	20A 3P 125V DUPLEX RECEPTACLE, UP 18" U.O.N.
	20A 3P 125V DOUBLE DUPLEX RECEPTACLE, MOUNTED ABOVE COUNTER, U.O.N.
	SPECIAL RECEPTACLE AS INDICATED ON PLANS

CALIFORNIA GREEN BUILDING STANDARDS COMPLIANCE

ALL EXTERIOR LUMINAIRES SPECIFIED IN THESE CONTRACT DOCUMENTS COMPLY WITH THE REQUIREMENTS OF THE CALIFORNIA ENERGY CODE AND THE CALIFORNIA GREEN BUILDING STANDARDS CODE, SECTION AS.106.8 LIGHT POLLUTION REDUCTION. EXTERIOR LUMINAIRES COMPLY WITH BACKLIGHT, UPLIGHT, AND GLARE (BUG) RATINGS AS DEFINED IN IESNA TM-15-11 AND BUG RATINGS DO NOT EXCEED THE MAXIMUM ALLOWABLE RATINGS FOR THIS PROJECT.

GENERAL NOTES

- PRIOR TO BID THE CONTRACTOR SHALL VISIT THE SITE TO ADEQUATELY DETERMINE ALL PRE-EXISTING CONDITIONS. BY THE ACT OF SUBMITTING A BID, THE CONTRACTOR WILL BE DEEMED TO HAVE COMPLIED WITH THE FOREGOING, TO HAVE ACCEPTED SUCH CONDITIONS, AND TO HAVE MADE ALLOWANCES THEREIN IN PREPARING THE BID.
- PROVIDE PARITY SIZED GREEN GROUND WIRE IN ALL POWER CONDUITS, BRANCH CIRCUITS (LIGHTING & POWER) AND HOMERUNS. PROVIDE ADDITIONAL ISOLATED GROUNDING, GREEN WITH YELLOW STRIPE, TO ALL ISOLATED GROUND RECEPTACLES.
- PROVIDE PULLROPE IN ALL EMPTY CONDUITS THROUGHOUT THE PROJECT.
- VERIFY EXACT CONNECTION REQUIREMENTS, OUTLET TYPE(S), MOUNTING HEIGHT(S) AND LOCATION(S) OF ALL OWNER-SUPPLIED EQUIPMENT, AND ALL EQUIPMENT PROVIDED UNDER OTHER SECTIONS OF THE SPECIFICATIONS, PRIOR TO BEGINNING WORK.
- COORDINATE TRENCHING WITH OWNER AND OTHER TRADES BEFORE BEGINNING WORK.
- MAINTAIN "AS-BUILT" RECORDS AT ALL TIMES, SHOWING EXACT LOCATION OF ALL UNDERGROUND AND/OR CONCEALED CONDUITS AND SERVICES INSTALLED UNDER THIS CONTRACT, INCLUDING CIRCUIT IDENTIFICATION WHERE APPLICABLE. PROVIDE OWNER WITH "AS-BUILT" DOCUMENTS AS INDICATED IN THE SPECIFICATIONS, AND/OR CALLED FOR IN THE SPECIFICATIONS.
- DRAWINGS INDICATE THE LOCATION(S) OF DEVICES, LUMINAIRES(S) AND EQUIPMENT, AND THE CIRCUIT NUMBER AND PANEL DESIGNATED TO SUPPLY THEM; THE CONTRACTOR SHALL BE RESPONSIBLE FOR COMPLETELY CONNECTING ALL ELECTRICAL DEVICES TO CIRCUITS INDICATED ON THE DRAWINGS.
- UNLESS OTHERWISE NOTED, ALL WORK SHOWN ON DRAWINGS IS NEW AND TO BE PROVIDED AND INSTALLED COMPLETE UNDER THIS CONTRACT.
- ALL EQUIPMENT GROUNDING SHALL CONFORM TO ARTICLE 250 OF THE NATIONAL ELECTRICAL CODE, LATEST EDITION.
- ALL EXTERIOR CONDUIT ABOVE GRADE, SHALL BE GALVANIZED RIGID STEEL. COAT ALL EXPOSED THREADS WITH GALVANIZING PAINT. PAINT ALL SURFACE MOUNTED RACEWAYS AND PULLBOXES TO MATCH SURROUNDING CONDITIONS, AS DIRECTED BY THE CITY.
- ALL ELECTRICAL WORK SHALL BE CARRIED OUT IN ACCORDANCE WITH THE LATEST EDITION OF THE N.E.C., AS WELL AS STATE, AND LOCAL CODES AND REQUIREMENTS.
- EQUIPMENT OVERLOADS AND FUSES SHALL BE PROVIDED AND INSTALLED AS PER NAME PLATE ON THE EQUIPMENT ACTUALLY PROVIDED.
- PROVIDE A DEDICATED NEUTRAL CONDUCTOR FOR ALL BRANCH CIRCUITS.
- ALL CONDUIT CONNECTORS TO OUTLET OR JUNCTION BOXES SHALL HAVE INSULATED THROATS (MANUFACTURED AS AN INTEGRAL PART OF THE CONNECTOR). AFTER-MARKET INSERTABLE THROATS ARE NOT ACCEPTABLE.
- ALL CIRCUITS IN ALL JUNCTION BOXES AND DEVICES SHALL BE CLEARLY IDENTIFIED BY MEANS OF "EZ" NUMBERING TAGS OR EQUIVALENT, TO IDENTIFY THE CIRCUIT NUMBER OR RELAY SUPPLYING THE CONDUCTOR, ALL JUNCTION BOXES SHALL BE LABELED PER SPECIFICATIONS.
- PROVIDE A BLANK COVER PLATE (COLOR TO MATCH ADJACENT DEVICES OR AS SPECIFICALLY CALLED FOR IN SPECIFICATIONS) FOR ALL JUNCTION BOXES (NEW AND EXISTING) ON THE PROJECT WHEN NO DEVICE IS INSTALLED.
- FOR OUTDOOR 20-AMPERE, 125 AND 250-VOLT RECEPTACLES: RECEPTACLES LOCATED IN "WET" LOCATIONS SHALL HAVE "TH-USE" TYPE WEATHERPROOF COVER PLATES PROVIDED AND INSTALLED; RECEPTACLES LOCATED IN "DAMP" LOCATIONS SHALL HAVE "TH-USE" TYPE WEATHERPROOF COVER PLATES IN LOCATIONS DEEMED TO BE "TH-USE" WITH CORD AND PLUG ATTACHED.

LIST OF DRAWINGS

E0.1	SYMBOLS LIST, GENERAL NOTES & LIST OF DRAWINGS
E0.2	LUMINAIRE SCHEDULE
E1.0	OVERALL SITE PLAN - ELECTRICAL
E1.1	SITE PLAN - ELECTRICAL
E1.2	SITE PLAN - ELECTRICAL
E1.3	SITE PLAN - ELECTRICAL
E1.4	SITE PLAN - ELECTRICAL
E1.5	SITE PLAN - SPORTS LIGHTING AND PA
ES.1	DIAGRAMS
ES.2	DIAGRAMS
E6.1	SCHEDULES
E7.1	DETAILS
E7.2	DETAILS

O'MAHONY & MYER
ELECTRICAL ENGINEERING AND LIGHTING DESIGN
4340 Redwood Hwy., Suite 245
San Rafael, California 94903
Tel (415) 492-0420 Fax (415) 479-9662
www.ommconsulting.com

Petaluma Community Sports Fields
SABBALL DIAMOND
SYMBOLS LIST, GENERAL NOTES
& LIST OF DRAWINGS

CITY OF PETALUMA
PUBLIC WORKS & UTILITIES
202 N. McDowell Blvd., PETALUMA, CALIFORNIA, 94954
PH. 707-778-1546 FAX. 707-778-1508

GSM landscapes architects, inc.
landscape architecture
site planning
www.gsm-lan.com
1700 Second Ave., Suite 23
Napa, CA 94979
(707) 259-4600

DATE: 4/12/21
FILE NO: E01
JOB NO: 16220
SHEET NO: **E0.1**

LUMINAIRE SCHEDULE

TYPE:	MOUNTING:	DESCRIPTION:	MANUFACTURER CATALOG #:	LIGHT SOURCE:	POWER SUPPLY:	VOLTS:	INPUT WATTS:
AC1	FLUSH IN-GRADE AT FLAGPOLE	FLUSH IN-GRADE LED FLAG UPLIGHT. POLYESTER COMPOSITE HOUSING. SUB-STRATE COMPOSITE STABILITY FLANGE. 360 DEGREE AIMING. NARROW FLOOD OPTICS. INTEGRAL SOLID STATE DRIVER. IP68 RATED VACUUM SEALED LAMP ENCLOSURE. TEMPERED TRACTION CONTROL GLASS LENS. MACHINED STAINLESS STEEL FACE PLATE WITH BRUSHED FINISH AND NOMINAL 7" DIAMETER. 14.5" RECESS DEPTH.	BK LIGHTING #S-HP2-LED-TR-X45-NFL-BRU-D3 4INC-MT-GM-R-TC	4000K 80+CRI LED 1800 LM	0-10V DIMMING TO 10%	277V	34W

LUMINAIRE SCHEDULE

TYPE:	MOUNTING:	DESCRIPTION:	MANUFACTURER CATALOG #:	LIGHT SOURCE:	POWER SUPPLY:	VOLTS:	INPUT WATTS:
AA1	POLE WITH ARM	ARM MOUNTED LED AREA LUMINAIRE. EXTRUDED ALUMINUM HOUSING. SILICONE GASKETS. STAINLESS STEEL HARDWARE. IP68 RATING OPTICAL REFRACTORS. IES TYPE III OPTICS WITH NEIGHBOR FRIENDLY OPTICAL SHIELDING (NFO). 0-10V DIMMING DRIVER. STANDARD POWDERCOAT FINISH SELECTED BY THE CITY. NOMINAL 6'H x 12"W x 17"L WITH 4"H x 2"W x 5"L MOUNTING ARM. ROUND ONE PIECE NON-TAPERED STEEL POLE WITH FLAT WELDED STEEL ANCHOR BASE. TWO PIECE DIE CAST ALUMINUM BASE COVER. FINISH TO MATCH LUMINAIRE. NOMINAL 11H x 4" DIAMETER MOUNTED ON 36" RAISED CONCRETE POLE BASE.	KIM LIGHTING LUMINAIRE: #1SA-SAR3-P35-40L-4K-VOLTAGE -FINISH-NFO POLE: #KRS14(11)-4120-SA-FINISH	4000K 70CRI LED 3925 LM BUG RATING: B1 U0 G2	350mA 0-10V DIMMING TO 10%	277V	46W
AA2	POLE WITH ARM	SIMILAR TO TYPE AA1 EXCEPT WITHOUT NFO OPTICAL SHIELDING.	KIM LIGHTING LUMINAIRE: #1SA-SAR3-P35-40L-4K-VOLTAGE -FINISH POLE: #KRS14-4120-SA-FINISH	4000K 70CRI LED 4378 LM BUG RATING: B1 U0 G2	350mA 0-10V DIMMING TO 10%	277V	46W
AA3	POLE WITH ARM	SIMILAR TO TYPE AA1 EXCEPT WITH IES TYPE IV OPTICS.	KIM LIGHTING LUMINAIRE: #1SA-SAR4-P35-40L-4K-VOLTAGE -FINISH-NFO POLE: #KRS14-4120-SA-FINISH	4000K 70CRI LED 4098 LM BUG RATING: B0 U0 G2	350mA 0-10V DIMMING TO 10%	277V	46W
AA4	POLE WITH ARM	SIMILAR TO TYPE AA1 EXCEPT WITH IES TYPE II OPTICS. WITHOUT NFO OPTICAL SHIELDING. NOMINAL 12H x 4" DIAMETER NON-TAPERED POLE.	KIM LIGHTING LUMINAIRE: #1SA-SAR2-P35-40L-4K-VOLTAGE -FINISH POLE: #KRS12-4120-SA-FINISH	4000K 70CRI LED 4098 LM BUG RATING: B2 U0 G2	350mA 0-10V DIMMING TO 10%	277V	46W
AA5	POLE WITH ARM	SIMILAR TO TYPE AA1 EXCEPT WITH IES TYPE IV OPTICS. NOMINAL 12H x 4" DIAMETER NON-TAPERED POLE.	KIM LIGHTING LUMINAIRE: #1SA-SAR4-P35-40L-4K-VOLTAGE -FINISH-NFO POLE: #KRS14-4120-SA-FINISH	4000K 70CRI LED 4098 LM BUG RATING: B0 U0 G2	350mA 0-10V DIMMING TO 10%	277V	46W
AA6	POLE WITH ARM	SIMILAR TO TYPE AA1 EXCEPT WITH (2) LUMINAIRES. SIMILAR TO TYPE AA1 EXCEPT WITHOUT NFO OPTICAL SHIELDING. NOMINAL 14H x 4" DIAMETER NON-TAPERED POLE.	KIM LIGHTING LUMINAIRE: (2) #2SB-SAR3-P35-40L-4K-VOLTAGE -FINISH POLE: #KRS14-4120-SB-FINISH	4000K 70CRI LED 3925 LM BUG RATING: B1 U0 G2	350mA 0-10V DIMMING TO 10%	277V	92W
AA7	POLE WITH ARM	SIMILAR TO TYPE AA1 EXCEPT WITHOUT RAISED POLE BASE.	KIM LIGHTING LUMINAIRE: #1SA-SAR3-P35-40L-4K-VOLTAGE -FINISH-NFO POLE: #KRS14-4120-SA-FINISH	4000K 70CRI LED 3925 LM BUG RATING: B1 U0 G2	350mA 0-10V DIMMING TO 10%	277V	46W
AA8	POLE WITH ARM	SIMILAR TO TYPE AA1 EXCEPT WITHOUT NFO OPTICAL SHIELDING AND 12H x 4" DIAMETER NON-TAPERED POLE.	KIM LIGHTING LUMINAIRE: #1SA-SAR3-P35-40L-4K-VOLTAGE -FINISH POLE: #KRS12-4120-SA-FINISH	4000K 70CRI LED 4378 LM BUG RATING: B1 U0 G2	350mA 0-10V DIMMING TO 10%	277V	46W
AB1	SURFACE CEILING IN DUGOUT	SURFACE MOUNTED LINEAR LED LUMINAIRE. IP68 WET LOCATION RATED. IMPACT RESISTANT POLYCARBONATE HOUSING AND DIFFUSE LENS. EVA SILICONE FOAM GASKET. WHITE FINISH. NOMINAL 48"L x 4"H x 5"W.	RAB LIGHTING #SHARK-4-35-YN-W/D10	3500K 70+CRI LED 4234 LM	0-10V DIMMING TO 10%	277V	36W



OWNER OF DOCUMENTS: GSM LANDSCAPE ARCHITECTS, INC. SHALL NOT BE RESPONSIBLE FOR OR LIABLE FOR UNAUTHORIZED CHANGES TO OR USES OF THESE PLANS. ALL CHANGES TO THE PLANS MUST BE IN WRITING AND MUST BE APPROVED BY GSM LANDSCAPE ARCHITECTS, INC. THIS DOCUMENT AND THE DESIGN INFORMATION HEREIN ARE INSTRUMENTS OF PROFESSIONAL SERVICE. IS THE PROPERTY OF GSM LANDSCAPE ARCHITECTS, INC. AND IS NOT TO BE USED IN WHOLE OR IN PART FOR ANY OTHER PROJECT WITHOUT THE WRITTEN APPROVAL OF GSM LANDSCAPE ARCHITECTS, INC. © COPYRIGHT 2020. ALL RIGHTS RESERVED.

DES. P.L.C.
PROJ. MGR.
DATE

GSM Landscape architects, inc.
landscape architecture
site planning

1700 Second Ave., Suite 23
Novato, CA 94949
www.gsmhvac.com

CITY OF PETALUMA
PUBLIC WORKS & UTILITIES
202 N. McDowell Blvd., PETALUMA, CALIFORNIA, 94954

PH: 707-778-4546 FAX: 707-778-4508

PETALUMA COMMUNITY SPORTS FIELDS
BASEBALL DIAMOND
LUMINAIRE SCHEDULE

2430 E WASHINGTON ST PETALUMA, CA 94954

DATE: 4/12/21

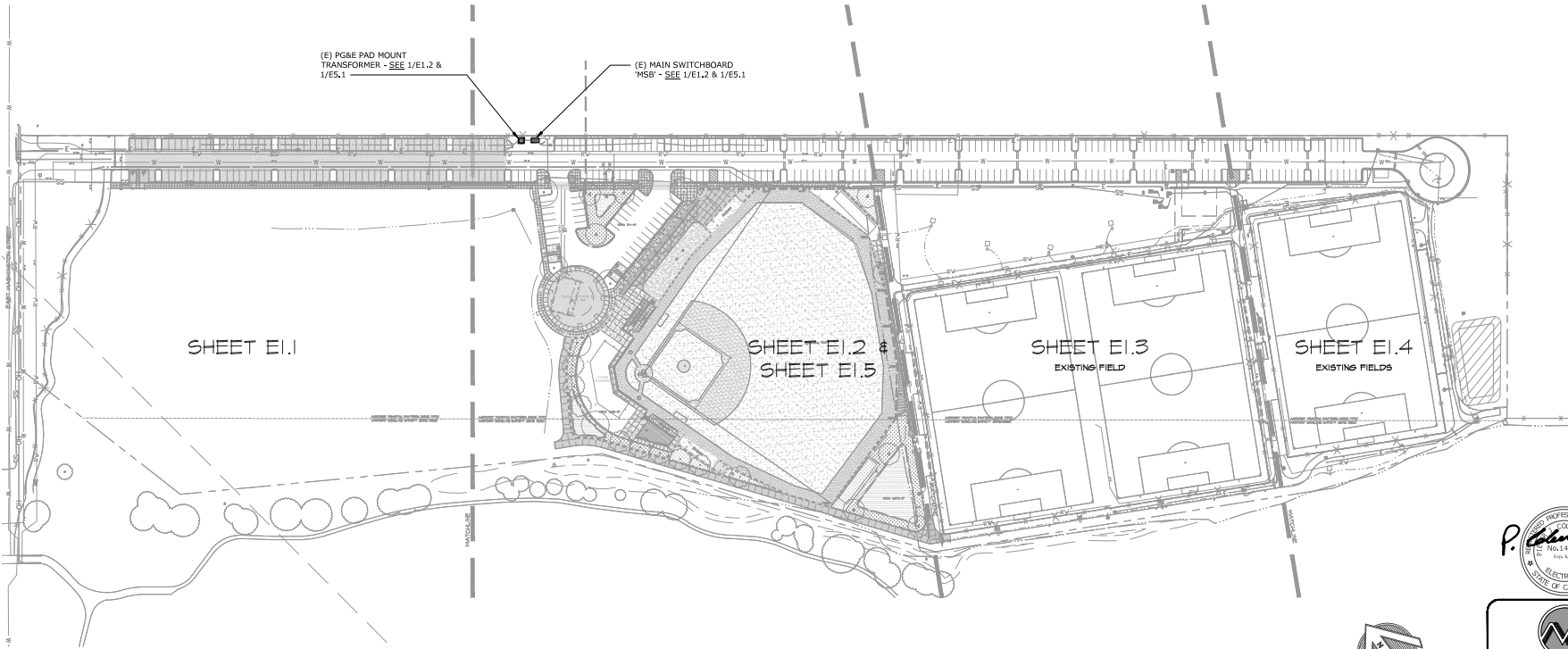
FILE NO: E02

JOB NO: 1626

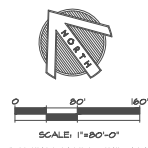
SHEET NO.

E.02

OF 54



OVERALL SITE PLAN - ELECTRICAL
SCALE: 1" = 80'-0"



O'MAHONY & MYER
ELECTRICAL ENGINEERING AND LIGHTING DESIGN
4340 Redwood Hwy., Suite 245
San Rafael, California 94903
Tel (415) 492-0420 Fax (415) 479-9662
www.omconconsulting.com

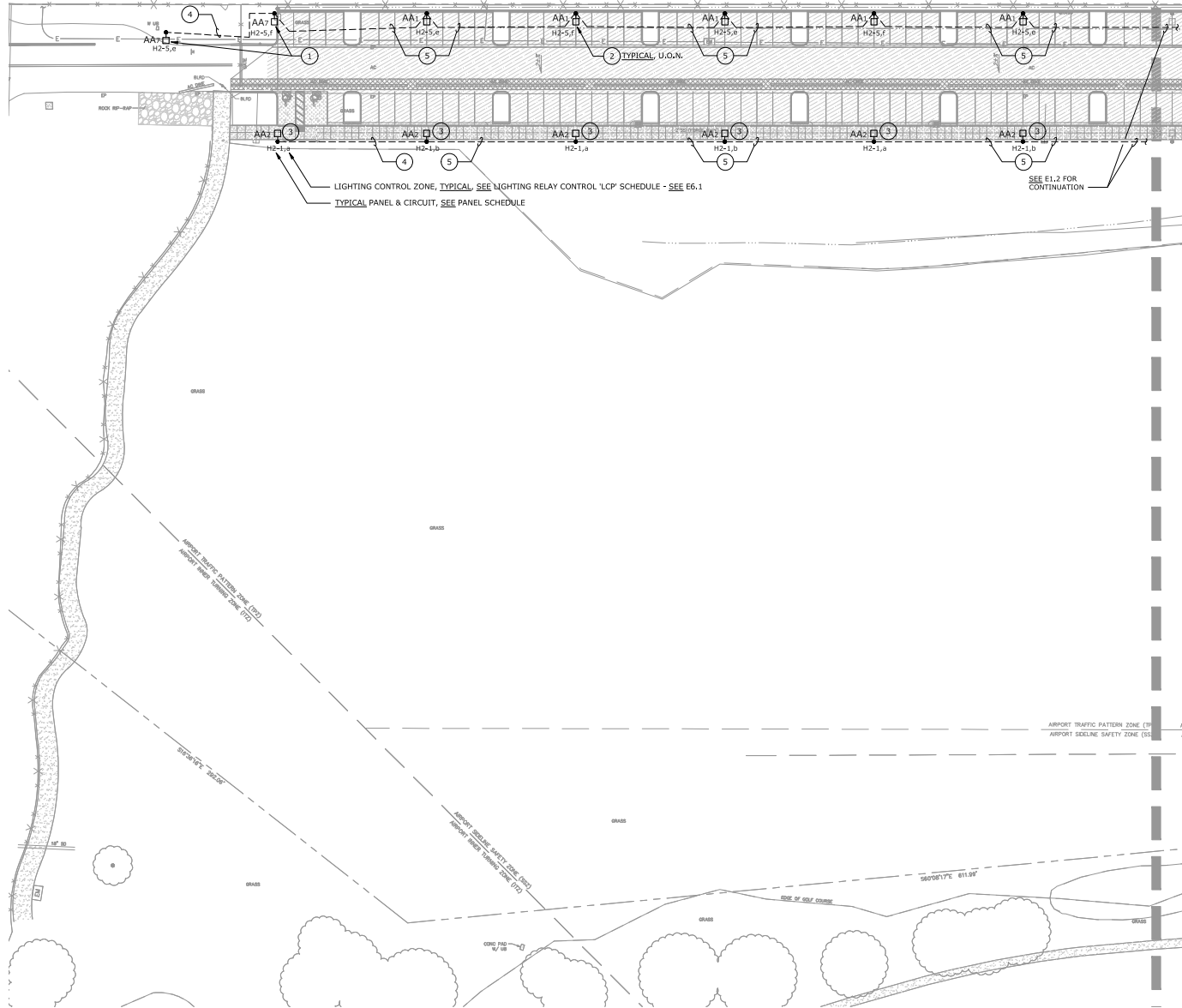
COPYRIGHT © 2009 GSM LANDSCAPE ARCHITECTS, INC. ALL RIGHTS RESERVED. THIS DOCUMENT AND THE DESIGN INFORMATION HEREIN ARE AN INSTRUMENT OF PROFESSIONAL SERVICE. IN THE PROPERTY OF GSM LANDSCAPE ARCHITECTS, INC. AND IS NOT TO BE USED IN WHOLE OR IN PART FOR ANY OTHER PROJECT WITHOUT THE WRITTEN APPROVAL OF GSM LANDSCAPE ARCHITECTS, INC. © 2009 GSM LANDSCAPE ARCHITECTS, INC. ALL RIGHTS RESERVED.

DATE: 4/12/21	DES. P.L.C.
FILE NO. E1.0	PROJ. INTY.
JOB NO. 1626	DRAW. P.L.C.
SHEET NO. E1.0	
9	

PETALUMA COMMUNITY SPORTS FIELDS
BASEBALL DIAMOND
OVERALL SITE PLAN - ELECTRICAL
2430 E WASHINGTON ST PETALUMA, CA 94954

CITY OF PETALUMA
PUBLIC WORKS & UTILITIES
202 N. McDowell Blvd., PETALUMA, CALIFORNIA, 94954
PH. 707-778-1546 FAX. 707-778-1508

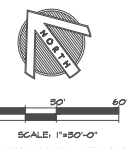
GSM landscape architects, inc.
landscape architecture
site planning
1700 Second Ave., Suite 23
Napa, CA 94959
www.gsmhvac.com
(707) 256-4600



- ### NUMBERED SHEET NOTES
- 1 SEE 1/E7.2 FOR POLE BASE DETAIL.
 - 2 SEE 4/E7.2 FOR POLE BASE DETAIL AT PARKING AREA.
 - 3 SEE 5/E7.2 FOR POLE BASE DETAIL ADJACENT WALKS.
 - 4 PROVIDE AND INSTALL (2)#8, (1)#6G, IN 1" CONDUIT.
 - 5 PROVIDE AND INSTALL (4)#8, (1)#6G, IN 1-1/4" CONDUIT.

- ### NOTES:
1. CONDUIT SHALL BE INSTALLED A MINIMUM OF 5' AWAY FROM TREES AND DRILLED PIERS.
 2. COORDINATE WITH CONCRETE CONTRACTOR TO LOCATE AND ADJUST BOXES TO ALIGN THEM WITH CONCRETE PAVEMENT JOINTS AS SHOWN ON L1.2. MAINTAIN 3" MINIMUM CLEARANCE FROM EDGE OF PAVEMENT. LAY OUT BOXES IN A NEAT AND ORDERLY FASHION.

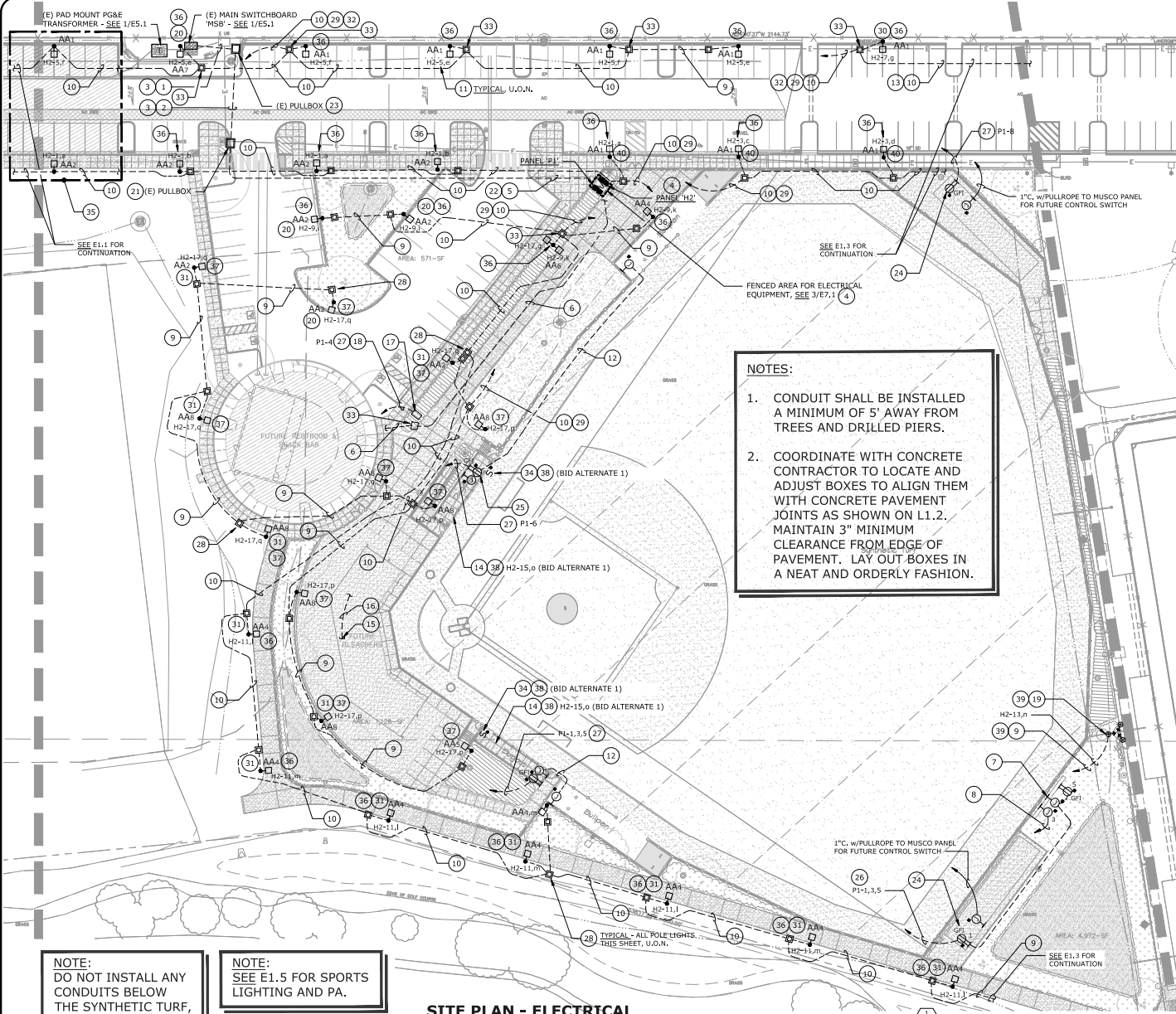
NOTES: - ALL ELECTRICAL WORK ON THIS DRAWING SHALL BE BID ALTERNATE 2.



O'MAHONY & MYER
ELECTRICAL ENGINEERING AND LIGHTING DESIGN
4340 Redwood Hwy., Suite 245
San Rafael, California 94903
Tel (415) 492-0420 Fax (415) 479-9662
www.ommconsulting.com

<p>DATE: 4/12/21</p> <p>FILE NO: E1</p> <p>JOB NO: 1626</p> <p>SHEET NO:</p>	<p>E1.1</p>	<p>9</p>	<p>PETALUMA COMMUNITY SPORTS FIELDS BASEBALL DIAMOND SITE PLAN - ELECTRICAL</p> <p>2430 E WASHINGTON ST PETALUMA, CA 94954</p>
<p>CITY OF PETALUMA PUBLIC WORKS & UTILITIES 202 N. McDowell Blvd., PETALUMA, CALIFORNIA, 94954 PH. 707-778-4546 FAX. 707-778-4508</p>			
<p>GSM landscape architects, inc. landscape architecture site planning 1700 Second Ave., Suite 23 Napa, CA 94959 www.gsmhvac.com</p>			

OWNER'S OF DOCUMENTS: GSM LANDSCAPE ARCHITECTS, INC. SHALL NOT BE RESPONSIBLE FOR OR LIABLE FOR UNAUTHORIZED CHANGES OR USES OF THESE PLANS. ALL CHANGES TO THE PLANS MUST BE IN WRITING AND MUST BE APPROVED BY GSM LANDSCAPE ARCHITECTS, INC. THIS DOCUMENT AND THE DESIGN INFORMATION HEREIN ARE INSTRUMENTS OF PROFESSIONAL SERVICE. IS THE PROPERTY OF GSM LANDSCAPE ARCHITECTS, INC. AND IS NOT TO BE USED IN WHOLE OR IN PART FOR ANY OTHER PROJECT WITHOUT THE WRITTEN AUTHORIZATION OF GSM LANDSCAPE ARCHITECTS, INC. © COPYRIGHT 2021. ALL RIGHTS RESERVED.



NOTES:

- CONDUIT SHALL BE INSTALLED A MINIMUM OF 5' AWAY FROM TREES AND DRILLED PIERS.
- COORDINATE WITH CONCRETE CONTRACTOR TO LOCATE AND ADJUST BOXES TO ALIGN THEM WITH CONCRETE PAVEMENT JOINTS AS SHOWN ON L1.2. MAINTAIN 3" MINIMUM CLEARANCE FROM EDGE OF PAVEMENT. LAY OUT BOXES IN A NEAT AND ORDERLY FASHION.

NOTE:
DO NOT INSTALL ANY CONDUITS BELOW THE SYNTHETIC TURF, TYPICAL

NOTE:
SEE E1.5 FOR SPORTS LIGHTING AND PA.

SITE PLAN - ELECTRICAL

SCALE: 1" = 30'-0"

NUMBERED SHEET NOTES

- EXISTING UNDERGROUND CONDUITS FROM PULLBOX TO MAIN SWITCHBOARD.
- EXISTING UNDERGROUND CONDUITS.
- EXISTING CONDUIT BETWEEN EXISTING MAIN SWITCHBOARD AND EXISTING PULLBOXES NOTED IN NOTES 20 & 21 BELOW TO BE USED FOR NEW FEEDERS TO BALL FIELD PANEL 'H2'. SEE 1/E5.1.
- SEE 1/E5.1.
- PROVIDE AND INSTALL NEW FEEDERS FROM 'MSB' TO PANEL 'H2'. SEE 1/E5.1.
- PROVIDE AND INSTALL FEEDER CONDUIT WITH PULLROPE FOR FUTURE RESTROOM/ CONCESSION BUILDING.
- 3-BOX WITH BRANCH CIRCUIT FOR FUTURE SCOREBOARD.
- PROVIDE AND INSTALL 1-1/4" CONDUIT w/PULLROPE FROM FUTURE SCOREBOARD TO FUTURE PRESS BOX.
- PROVIDE AND INSTALL (2)#8, (1)#8G, IN 1" CONDUIT.
- PROVIDE AND INSTALL (4)#8, (1)#8G, IN 1-1/4" CONDUIT.
- SEE DETAIL 4/E7.2 FOR POLE BASE DETAIL.
- PROVIDE AND INSTALL 1" CONDUIT BETWEEN DUGOUT AND BULPEN FOR FUTURE COMMUNICATIONS WIRING.
- INSTALL CONDUIT IN LANDSCAPE AREA BETWEEN FENCE AND PARKING STALLS.
- LUMINAIRE TYPE 'AB1', PROVIDE (4) LUMINAIRES PER DUGOUT.
- STUB CONDUIT UP AT FUTURE PRESS BOX - COORDINATE LOCATION.
- PROVIDE AND INSTALL FEEDER CONDUIT WITH PULLROPE FOR FUTURE PRESS BOX PANEL, SEE 1/E5.1.
- IRRIGATION CONTROLLER, COORDINATE LOCATION.
- PROVIDE AND INSTALL 120 VOLT BRANCH CIRCUIT TO IRRIGATION CONTROLLER.
- SEE 2/E7.2 FOR FLAG LIGHTING DETAIL. PROVIDE (3) TYPE AC1 LUMINAIRES.
- SEE DETAIL 1/E7.2.
- EXISTING PULLBOX ON WEST SIDE OF ROADWAY.
- PROVIDE AND INSTALL NEW UNDERGROUND CONDUIT FROM PULLBOX NOTED IN NOTE 21 ABOVE TO NEW PANEL 'H2'.
- EXISTING PULLBOX ON EAST SIDE OF ROADWAY.
- INSTALL RECEPTACLE ON BATTING CAGE FENCE, COORDINATE LOCATION.
- INSTALL RECEPTACLE ON DUGOUT WALL, COORDINATE LOCATION.
- PROVIDE AND INSTALL (6)#8 & (1)#8G IN 1-1/4" CONDUIT HOMERUN TO PANEL 'P1'.
- PROVIDE AND INSTALL (2)#8 & (1)#8G IN 1" CONDUIT.
- PROVIDE AND INSTALL CHRISTY BOX #N9, COORDINATE LOCATION.
- HOMERUN TO PANEL 'H2' VIA LIGHTING CONTROL RELAY PANEL 'LCP'.
- SEE DETAIL 6/E7.2.
- SEE DETAIL 5/E7.2.
- USE EXISTING CONDUITS UNDER ROADWAY AND PULLBOXES, SEE NOTES 2, 21, AND 23 ABOVE.
- PROVIDE AND INSTALL CHRISTY BOX #1730, COORDINATE LOCATION.
- PROVIDE AND INSTALL WEATHERPROOF LINE VOLTAGE SWITCH TO CONTROL THE DUGOUT LIGHTING. THE LINE VOLTAGE SWITCH IS CONNECTED ON LOAD SIDE OF THE LIGHTING CONTROL RELAY.
- ELECTRICAL WORK IN THIS AREA SHALL BE BID ALTERNATE 2.
- BASE BID: SITE LIGHTING CONDUIT, PULLROPE AND PULLBOXES, BID ALTERNATE 2: POLE LIGHT FIXTURE, POLE BASE, CONDUIT TO ADJACENT PULL BOXES AND BRANCH CIRCUIT WIRING.
- BASE BID: SITE LIGHTING CONDUIT, PULLROPE AND PULLBOXES, BID ALTERNATE 1: POLE LIGHT FIXTURE, POLE BASE, CONDUIT TO ADJACENT PULL BOXES AND BRANCH CIRCUIT WIRING.
- BASE BID TO INCLUDE CONDUIT HOMERUN WITH PULLROPE.
- BASE BID: PROVIDE TIMELOCK TO CONTROL FLAGPOLE LIGHTS, DZ5 TYPE: BID ALTERNATE 1; CONTROL VIA LIGHTING CONTROL PANEL.
- SEE DETAIL 3/E7.2.



SCALE: 1" = 30'-0"



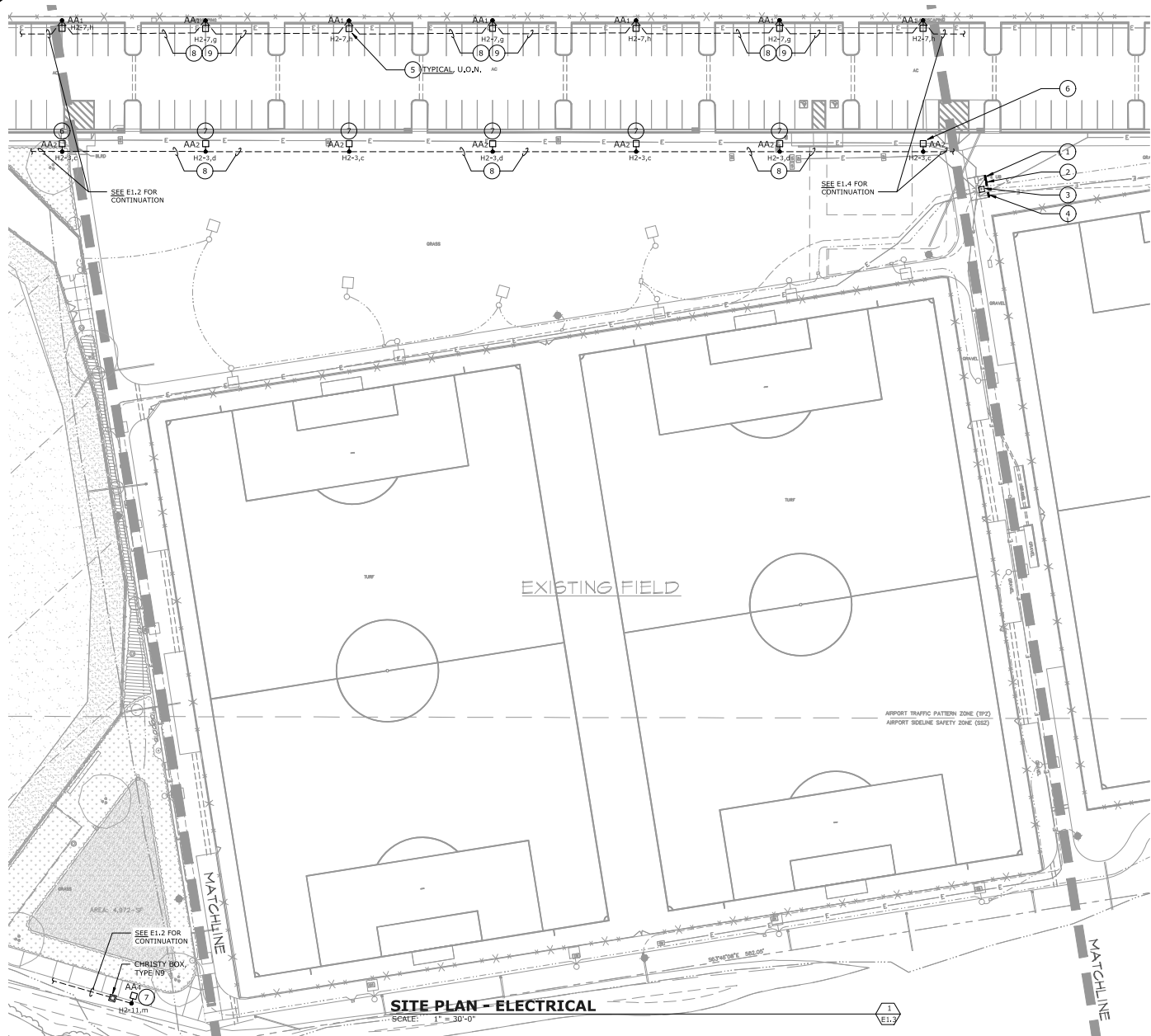
O'MAHONY & MYER
ELECTRICAL ENGINEERING AND LIGHTING DESIGN
4340 Redwood Hwy., Suite 245
San Rafael, California 94903
Tel (415) 492-0420 Fax (415) 479-9662
www.ommconsulting.com

DATE: 4/12/21	FILE NO: E1.2	SHEET NO: 626
<p>E1.2</p>		

**PETALUMA COMMUNITY SPORTS FIELDS
BASEBALL DIAMOND
SITE PLAN - ELECTRICAL
2430 E WASHINGTON ST PETALUMA, CA 94954**

GSM landscape architects, inc.
landscape architecture
site planning
1700 Grand Ave., Suite 28
Napa, CA 94959
www.gsmhvac.com

CITY OF PETALUMA
PUBLIC WORKS & UTILITIES
202 N. McDowell Blvd., PETALUMA, CALIFORNIA, 94954
PH. 707-778-1646 FAX. 707-778-1608



- ### NUMBERED SHEET NOTES
- 1 EXISTING MUSCO LIGHTING CONTROL PANEL, SEE 1/E5.1.
 - 2 EXISTING PANEL 'H3', SEE 1/E5.1.
 - 3 EXISTING TRANSFORMER 'TP2', SEE 1/E5.1.
 - 4 EXISTING PANEL 'P1', SEE 1/E5.1.
 - 5 SEE 6/E7.2 FOR POLE BASE DETAIL AT PARKING AREA.
 - 6 NEW POLE BASE AT EXISTING CONCRETE WALKWAY. SEE 5/E7.3 FOR DETAIL.
 - 7 SEE 5/E7.2 FOR POLE BASE DETAIL AT WALKS.
 - 8 PROVIDE AND INSTALL (4)Ø8, (1)Ø6G, IN 1-1/4" CONDUIT.
 - 9 INSTALL CONDUIT IN LANDSCAPE AREA BETWEEN FENCE AND PARKING STALLS.

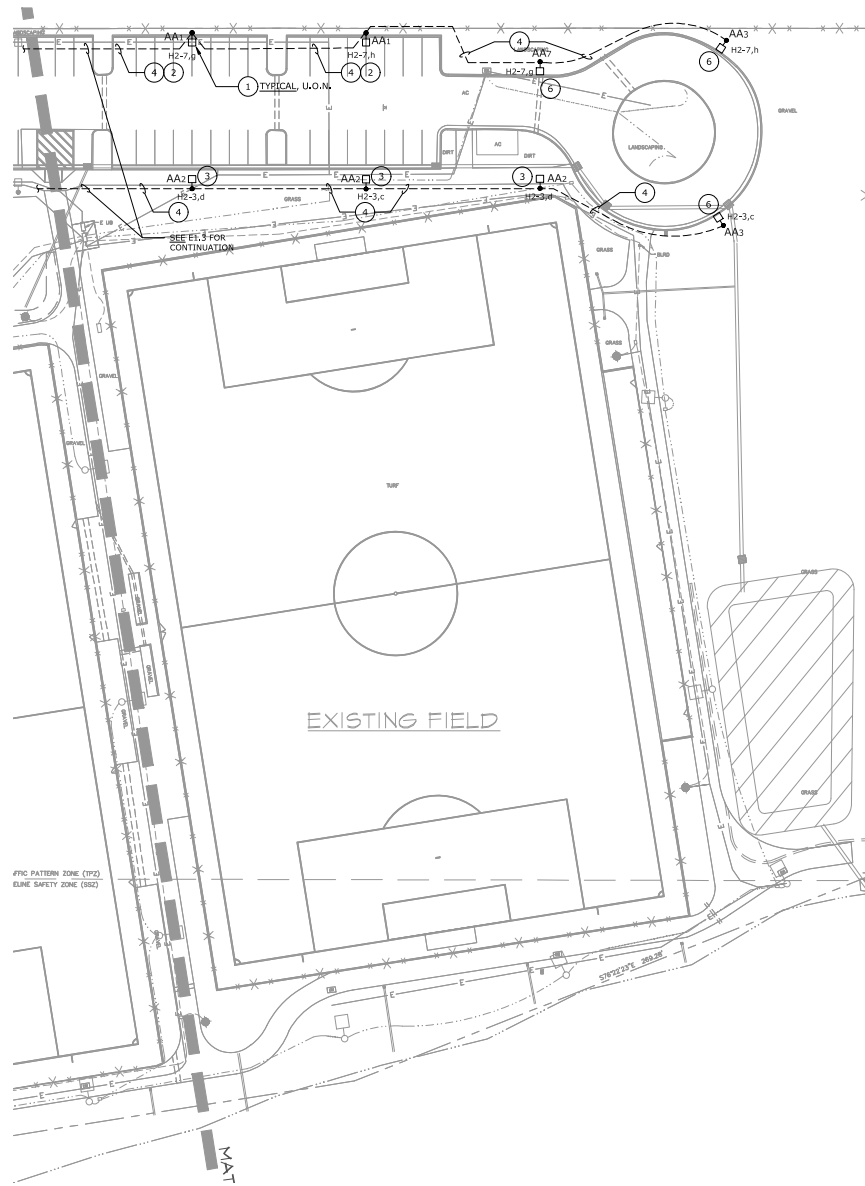
- ### NOTES:
1. CONDUIT SHALL BE INSTALLED A MINIMUM OF 5' AWAY FROM TREES AND DRILLED PIERS.
 2. COORDINATE WITH CONCRETE CONTRACTOR TO LOCATE AND ADJUST BOXES TO ALIGN THEM WITH CONCRETE PAVEMENT JOINTS AS SHOWN ON L1.2. MAINTAIN 3" MINIMUM CLEARANCE FROM EDGE OF PAVEMENT. LAY OUT BOXES IN A NEAT AND ORDERLY FASHION.

NOTES: - ALL ELECTRICAL WORK ON THIS DRAWING SHALL BE BID ALTERNATE 2.

O'MAHONY & MYER
ELECTRICAL ENGINEERING AND LIGHTING DESIGN
4340 Redwood Hwy., Suite 245
San Rafael, California 94903
Tel (415) 492-0420 Fax (415) 479-9662
www.ommconsulting.com

<p>DATE: 4/12/21</p> <p>FILE NO: E15</p> <p>JOB NO: 1626</p> <p>SHEET NO:</p>	<p>9 E1.3</p>	<p>GSM landscape architects, inc. landscape architecture site planning</p> <p>1700 Island Ave., Suite 23 Napa, CA 94959 www.gsm-lan.com</p>
<p>CITY OF PETALUMA PUBLIC WORKS & UTILITIES 202 N. McDowell Blvd., PETALUMA, CALIFORNIA, 94954 PH: 707-778-1546 FAX: 707-778-1508</p>		
<p>PETALUMA COMMUNITY SPORTS FIELDS BASEBALL DIAMOND SITE PLAN - ELECTRICAL</p>		
<p>2430 E WASHINGTON ST PETALUMA, CA 94954</p>		

CONSULTANT OF RECORD: GSM LANDSCAPE ARCHITECTS, INC. SHALL NOT BE RESPONSIBLE FOR OR LIABLE FOR UNAUTHORIZED CHANGES TO OR USES OF THESE PLANS. ALL CHANGES TO THE PLAN MUST BE IN WRITING AND MUST BE APPROVED BY GSM LANDSCAPE ARCHITECTS, INC. THIS DOCUMENT AND THE DESIGN INFORMATION HEREIN IS AN INSTRUMENT OF PROFESSIONAL SERVICE. IS THE PROPERTY OF GSM LANDSCAPE ARCHITECTS, INC. AND IS NOT TO BE USED IN WHOLE OR IN PART FOR ANY OTHER PROJECT WITHOUT THE WRITTEN AUTHORIZATION OF GSM LANDSCAPE ARCHITECTS, INC. © COPYRIGHT 2021. ALL RIGHTS RESERVED.



SITE PLAN - ELECTRICAL

SCALE: 1" = 30'-0"



SCALE: 1"=30'-0"



O'MAHONY & MYER
 ELECTRICAL ENGINEERING AND LIGHTING DESIGN
 4340 Redwood Hwy., Suite 245
 San Rafael, California 94903
 Tel (415) 492-0420 Fax (415) 479-9662
 www.ommconsulting.com

- NUMBERED SHEET NOTES**
- SEE 6/E7.2 FOR POLE BASE DETAIL AT PARKING AREAS.
 - INSTALL CONDUIT IN LANDSCAPE AREA BETWEEN FENCE AND PARKING STALLS.
 - SEE 5/E7.2 FOR POLE BASE DETAIL AT EXISTING WALK.
 - PROVIDE AND INSTALL (2)Ø8, (1)Ø6G, IN 1" CONDUIT.
 - PROVIDE AND INSTALL (4)Ø8, (1)Ø6G, IN 1-1/4" CONDUIT.
 - SEE 1/E7.2.

- NOTES:**
- CONDUIT SHALL BE INSTALLED A MINIMUM OF 5' AWAY FROM TREES AND DRILLED PIERS.
 - COORDINATE WITH CONCRETE CONTRACTOR TO LOCATE AND ADJUST BOXES TO ALIGN THEM WITH CONCRETE PAVEMENT JOINTS AS SHOWN ON L1.2. MAINTAIN 3" MINIMUM CLEARANCE FROM EDGE OF PAVEMENT. LAY OUT BOXES IN A NEAT AND ORDERLY FASHION.

NOTES: - ALL ELECTRICAL WORK ON THIS DRAWING SHALL BE BID ALTERNATE 2.

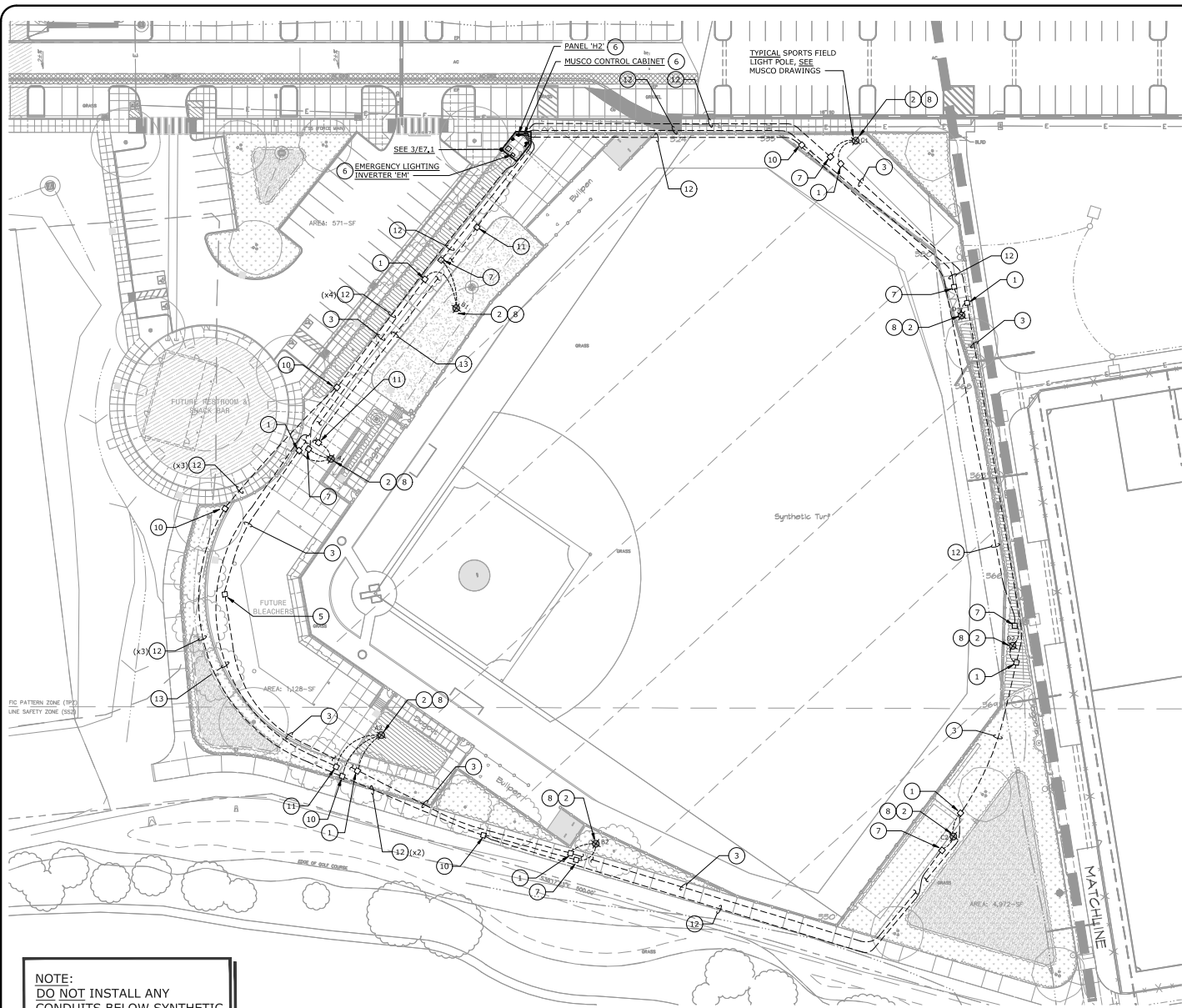
COPYRIGHT © 2009 BY GSM LANDSCAPE ARCHITECTS, INC. ALL RIGHTS RESERVED. THIS DOCUMENT IS THE PROPERTY OF GSM LANDSCAPE ARCHITECTS, INC. AND IS NOT TO BE REPRODUCED OR TRANSMITTED IN ANY FORM OR BY ANY MEANS, ELECTRONIC OR MECHANICAL, INCLUDING PHOTOCOPYING, RECORDING, OR BY ANY INFORMATION STORAGE AND RETRIEVAL SYSTEM. WITHOUT THE WRITTEN PERMISSION OF GSM LANDSCAPE ARCHITECTS, INC. © COPYRIGHT 2009. ALL RIGHTS RESERVED.

DES. P.L.G.	DATE: 4/12/21
DRWN. J.M.V.	FILE NO. E1.4
CHECK P.L.G.	JOB NO. 1626
	SHEET NO.
E1.4	

**PETALUMA COMMUNITY SPORTS FIELDS
 BASEBALL DIAMOND
 SITE PLAN - ELECTRICAL
 2430 E WASHINGTON ST PETALUMA, CA 94954**

GSM landscape architects, inc.
 landscape architecture
 site planning
 1700 Second Ave., Suite 23
 Napa, CA 94959
 (707) 258-4600
 www.gsm-lan.com

CITY OF PETALUMA
 PUBLIC WORKS & UTILITIES
 202 N. McDowell Blvd., PETALUMA, CALIFORNIA, 94954
 PH. 707-778-4546 FAX. 707-778-4508



NOTE:
DO NOT INSTALL ANY
CONDUITS BELOW SYNTHETIC
TURF, TYPICAL THIS PROJECT.

SITE PLAN - SPORTS LIGHTING AND PA
SCALE: 1" = 30'-0"

- ### NUMBERED SHEET NOTES
- 1 FLUSH IN-GROUND CHRISTY #N16 BOX WITH LABEL "SIGNAL", TO BE LOCATED ADJACENT TO SPORTS LIGHTING POLE ASSEMBLY. FIELD VERIFY EXACT LOCATION FOR BEST SITE COORDINATED LOCATION WITH RESPECT TO SPORTS LIGHTING POLE AND OTHER PULLBOXES.
 - 2 PROVIDE 1" CONDUIT WITH PULLROPE FOR PA CONDUCTORS FROM SIGNAL CHRISTY BOX. STUBBED-UP INTO SPORTS LIGHTING POLE. RISE UP TO 30" A.F.G. INSIDE POLE. TERMINATE AT PA SYSTEM SPEAKER LOCATION.
 - 3 PROVIDE AND INSTALL 1-1/4" CONDUIT WITH PULLROPE FOR P.A. WIRING.
 - 4 NOT USED.
 - 5 PROVIDE PULLBOX FOR EXTENSION OF PA CONDUITS TO FUTURE PULLBOX.
 - 6 SEE SPORTS LIGHTING SINGLE LINE DIAGRAM, 1/ES.2.
 - 7 FLUSH IN-GROUND CHRISTY #N16 BOX WITH LABEL "LIGHTING", TO BE LOCATED ADJACENT TO SPORTS LIGHTING POLE ASSEMBLY. FIELD VERIFY EXACT LOCATION FOR BEST SITE COORDINATED LOCATION WITH RESPECT TO SPORTS LIGHTING POLE.
 - 8 PROVIDE 1.5" CONDUIT AND CONDUCTORS FROM NORMAL POWER CHRISTY BOX AND 1" CONDUIT AND CONDUCTORS FROM EM POWER CHRISTY BOX (WHERE OCCURS), STUBBED-UP INTO SPORTS LIGHTING POLE. RISE BOTH UP TO 18" A.F.G. INSIDE POLE. TERMINATE CONDUCTORS ON SPORTS LIGHTING SYSTEM EQUIPMENT (SINGLE POINT CONNECTION FOR EACH).
 - 9 FLUSH IN-GROUND CHRISTY #N16 BOX WITH LABEL "LIGHTING". VERIFY EXACT LOCATION IN THE FIELD.
 - 10 FLUSH IN-GROUND CHRISTY #B1730 BOX WITH LABEL "LIGHTING".
 - 11 FLUSH IN-GROUND CHRISTY #N9 BOX WITH LABEL "EM LIGHTING". LOCATE ADJACENT TO NORMAL POWER CHRISTY BOX.
 - 12 PROVIDE AND INSTALL HOMERUN CONDUIT AND WIRING TO PANEL "H2" VIA MUSCO CONTROL CABINET, SEE 1/ES.2.
 - 13 PROVIDE AND INSTALL EMERGENCY LIGHTING HOMERUN CONDUIT AND WIRING TO INVERTER "EM" VIA MUSCO CONTROL CABINET, SEE 1/ES.2.

- ### NOTES:
1. CONDUIT SHALL BE INSTALLED A MINIMUM OF 5' AWAY FROM TREES AND DRILLED PIERS.
 2. COORDINATE WITH CONCRETE CONTRACTOR TO LOCATE AND ADJUST BOXES TO ALIGN THEM WITH CONCRETE PAVEMENT JOINTS AS SHOWN ON L1.2. MAINTAIN 3" MINIMUM CLEARANCE FROM EDGE OF PAVEMENT. LAY OUT BOXES IN A NEAT AND ORDERLY FASHION.

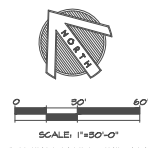
SPORTS FIELD LIGHTING ALTERNATE

BASE BID: SPORTS FIELD LIGHTING CONDUITS, PULL ROPES AND PULLBOXES.

BID ALTERNATE 1: SPORTS FIELD LIGHTING, BASES, CONTROLS, ALL BRANCH CIRCUIT WIRING, AND EMERGENCY INVERTER.



O'MAHONY & MYER
ELECTRICAL ENGINEERING AND LIGHTING DESIGN
4340 Redwood Hwy., Suite 245
San Rafael, California 94903
Tel (415) 492-0420 Fax (415) 479-9662
www.ommconsulting.com



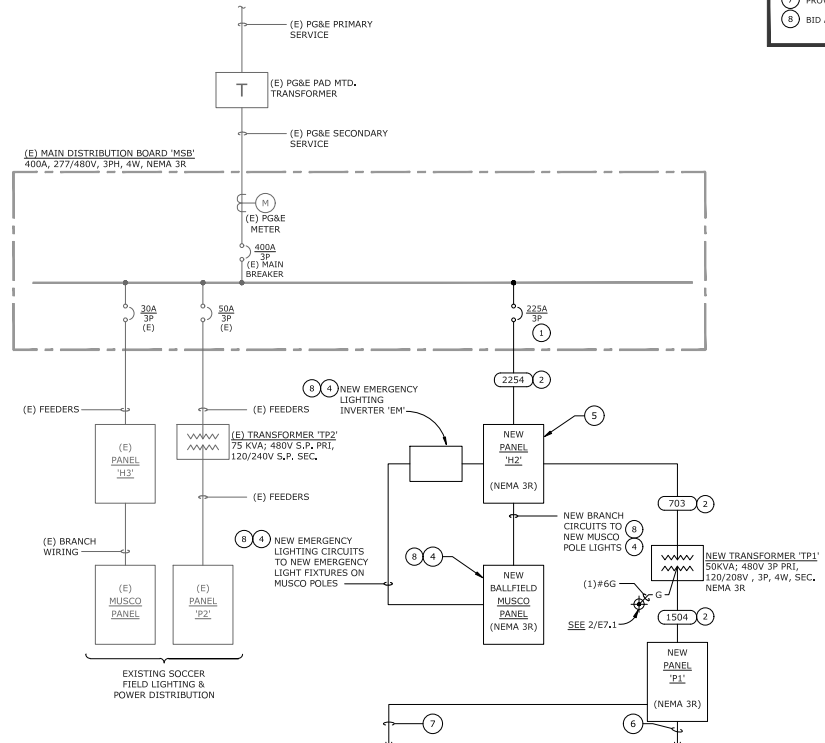
DES. PLS. DATE: 4/12/21	PROJ. MGR. FILE NO. E15	DATE: PLS. JOB NO. 1626	DATE: PLS. SHEET NO.
PETALUMA COMMUNITY SPORTS FIELDS BASEBALL DIAMOND SITE PLAN - SPORTS LIGHTING AND PA			
2430 E WASHINGTON ST PETALUMA, CA 94954			
			
CITY OF PETALUMA PUBLIC WORKS & UTILITIES 202 N. McDowell Blvd., PETALUMA, CALIFORNIA, 94954 PH. 707-778-1546 FAX. 707-778-1508			
			
			
			
E1.5			

COVER SHEET OF DOCUMENTS - GSM LANDSCAPE ARCHITECTS, INC. SHALL NOT BE RESPONSIBLE FOR OR LIABLE FOR UNAUTHORIZED CHANGES TO OR USES OF THESE PLANS. ALL CHANGES TO THE PLANS MUST BE IN WRITING AND MUST BE APPROVED BY GSM LANDSCAPE ARCHITECTS, INC. THIS DOCUMENT AND THE SEALS REPRESENTED HEREIN ARE AN INSTRUMENT OF PROFESSIONAL SERVICE. IS THE PROPERTY OF GSM LANDSCAPE ARCHITECTS, INC. AND IS NOT TO BE USED IN WHOLE OR IN PART FOR ANY OTHER PROJECT WITHOUT THE WRITTEN APPROVAL OF GSM LANDSCAPE ARCHITECTS, INC. © COPYRIGHT 2021. ALL RIGHTS RESERVED.

COPPER FEEDER SCHEDULE		
FEEDER	CONDUIT	CONDUCTORS
2254	(1) 3"	(4)#4/0 & (1)#4 G.
1504	(1) 2"	(4)#1/0 & (1)#6 G.
1253	(1) 1-1/2"	(3)#1/0 & (1)#6 G.
1003	(1) 1-1/2"	(3)#1 & (1)#6 G.
703	(1) 1"	(3)#4 & (1)#8 G.
503	(1) 1"	(3)#6 & (1)#10 G.

FEEDER TAG KEY	
400A	INDICATES DOUBLE NEUTRAL
1	WIRE QUANTITY
2	FEEDER AMPACITY

NOTE: NOT ALL FEEDERS ON THIS SCHEDULE ARE NECESSARILY USED ON THIS PROJECT.



SINGLE LINE DIAGRAM - POWER
SCALE: NONE

- ### NUMBERED SHEET NOTES
- 1 PROVIDE AND INSTALL NEW CIRCUIT BREAKER TO MATCH EXISTING.
 - 2 PROVIDE AND INSTALL NEW FEEDERS.
 - 3 PROVIDE AND INSTALL GROUNDING FOR PRESS BOX PANEL.
 - 4 SEE 1/E5.2.
 - 5 PROVIDE PANEL WITH INTEGRAL TVSS; SEE PANEL SCHEDULE.
 - 6 PROVIDE AND INSTALL 3" CONDUIT WITH PULLROPE FOR FOR FUTURE RESTROOM/CONCESSIONS BUILDING; SEE E1.2.
 - 7 PROVIDE AND INSTALL 2" CONDUIT WITH PULLROPE FOR FOR PRESS BOX; SEE E1.2.
 - 8 BID ALTERNATE 1.

O'MAHONY & MYER
ELECTRICAL ENGINEERING AND LIGHTING DESIGN
4340 Redwood Hwy., Suite 245
San Rafael, California 94903
Tel (415) 492-0420 Fax (415) 479-9662
www.omcconsulting.com

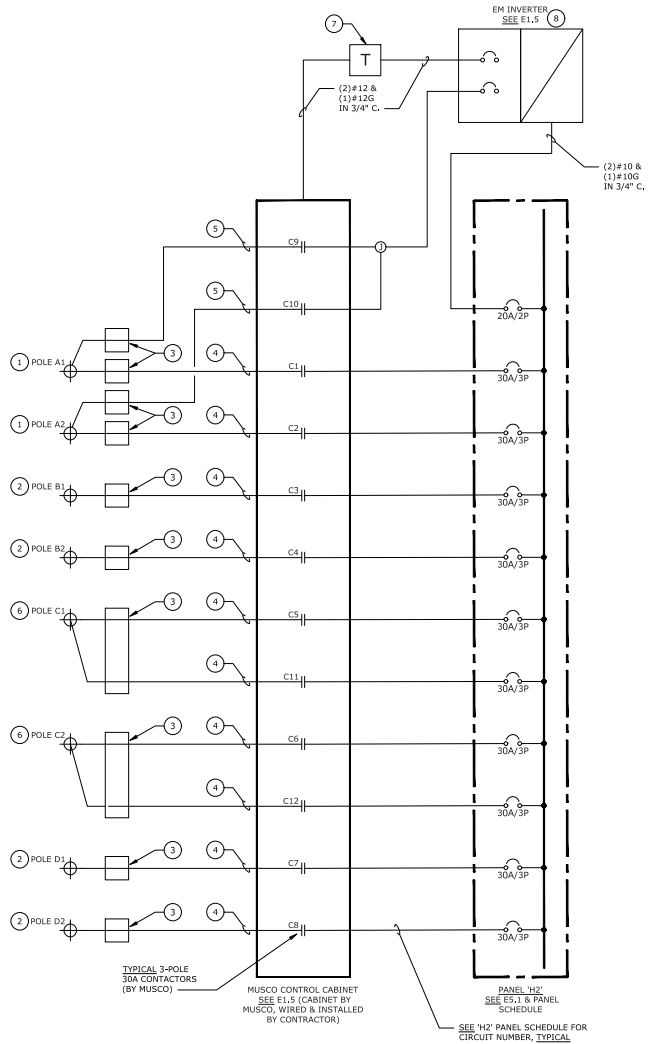
DATE: 4/12/21
FILE NO: E5
JOB NO: 1626
SHEET NO: **E5.1**

**PETALUMA COMMUNITY SPORTS FIELDS
BASEBALL DIAMOND
DIAGRAMS**

CITY OF PETALUMA
PUBLIC WORKS & UTILITIES
202 N. McDowell Blvd., PETALUMA, CALIFORNIA, 94954
PH: 707-778-4546 FAX: 707-778-4500

GSM landscape architects, inc.
landscape architecture
site planning
1700 Second Ave., Suite 23
Napa, CA 94959
www.gsm-lan.com

2430 E WASHINGTON ST PETALUMA, CA 94954



SPORTS LIGHTING SINGLE LINE DIAGRAM
SCALE: NONE



- ### NUMBERED SHEET NOTES
- 1 STUB-UP INTO SPORTS POLE BASES WITH (1) 1.5" AND (1) 1" CONDUIT TO MUSCO EQUIPMENT AT MIN. +10' A.F.G. AND TERMINATE.
 - 2 STUB-UP INTO SPORTS POLE BASES WITH (1) 1.5" CONDUIT TO MUSCO EQUIPMENT AT MIN. +10' A.F.G. AND TERMINATE.
 - 3 SITE PULLBOXES AT EACH POLE. SEE SITE PLAN E1.5.
 - 4 HOMERUN CONDUITS BACK TO PANEL "H2" VIA MUSCO CONTROL CABINET; (3)#2 + (1)#2 EACH 1.5" CIRCUIT.
 - 5 HOMERUN CONDUIT BACK TO EM INVERTER VIA MUSCO CONTROL CABINET; (2)#8 + (1)#10G IN 1" CONDUIT FOR GRANDSTAND EMERGENCY LIGHTING.
 - 6 STUB-UP INTO SPORTS POLE BASES WITH (2) 1.5" CONDUIT TO MUSCO EQUIPMENT AT MIN. +10' A.F.G. AND TERMINATE.
 - 7 PROVIDE AND INSTALL 750VA CONTROL POWER TRANSFORMER: 480V/1PH PRIMARY - 120V/1PH SECONDARY, COMPLETE WITH NEMA 3R ENCLOSURE AND PRIMARY/SECONDARY FUSING, EATON #C0750E2A OR EQUAL.
 - 8 PROVIDE AND INSTALL 2KW EMERGENCY LIGHTING INVERTER, FOR MUSCO PROVIDED EM LIGHTING AT INDICATED POLES. DUAL-LITE LSN #D SERIES OR EQUAL (480V INPUT, 480V OUTPUT), VRLA 10-YEAR BATTERY WITH NEMA 3R ENCLOSURE. CONNECT SUPPLY SIDE COMPLETE TO PANEL "H2"; CONNECT LOAD SIDE COMPLETE TO SPORTS LIGHTING POLE EM LIGHTS. EXTEND OUTPUT LOAD SIDE WIRING FROM INVERTER TO EM DESIGNATED CHRISTY BOXES AND POLES AS SHOWN.

SPORTS FIELD LIGHTING ALTERNATE

BASE BID: SPORTS FIELD LIGHTING CONDUITS, PULL ROPES AND PULLBOXES.

BID ALTERNATE 1: SPORTS FIELD LIGHTING, BASES, CONTROLS, ALL BRANCH CIRCUIT WIRING, AND EMERGENCY INVERTER.



O'MAHONY & MYER
ELECTRICAL ENGINEERING AND LIGHTING DESIGN

4340 Redwood Hwy., Suite 245
San Rafael, California 94903
Tel (415) 492-0420 Fax (415) 479-9662
www.omconsulting.com

<p>DATE: 4/12/21</p> <p>FILE NO: ES</p> <p>JOB NO: 1626</p> <p>SHEET NO: 5</p>	<p>E5.2</p>
--	--------------------

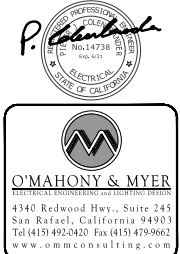
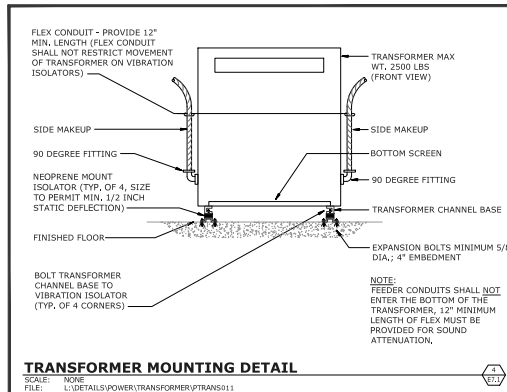
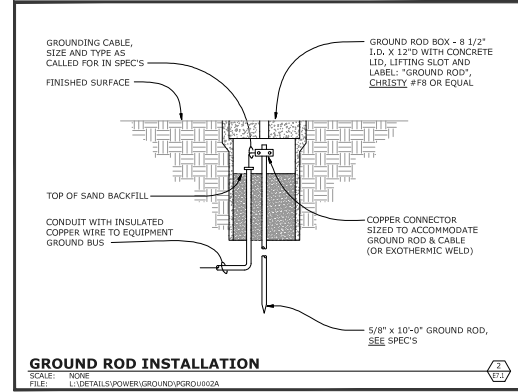
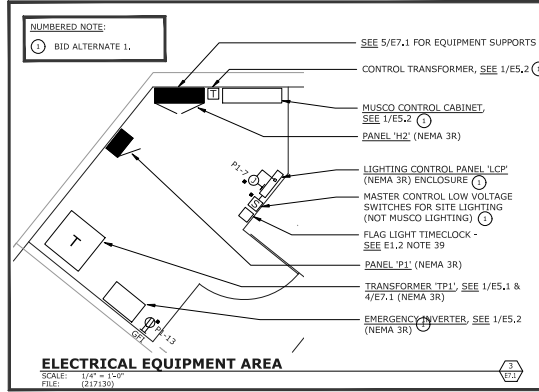
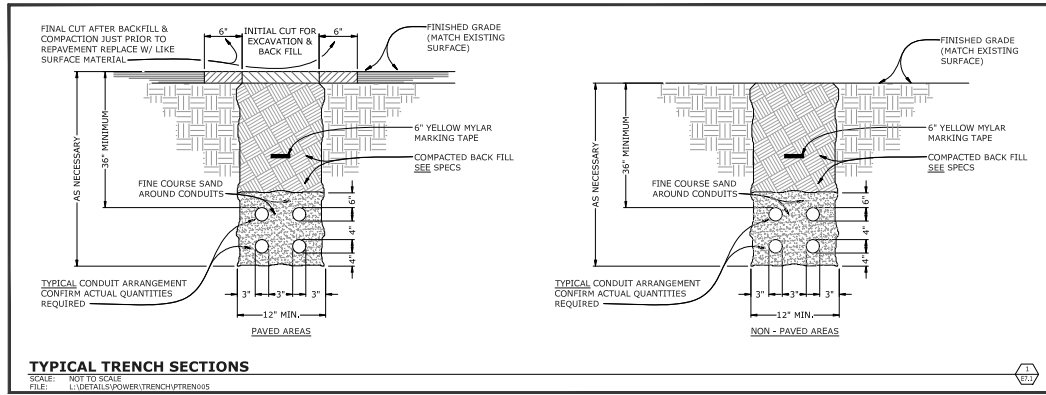
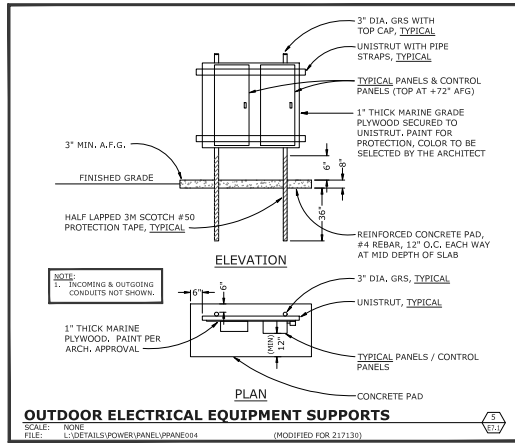
**PETALUMA COMMUNITY SPORTS FIELDS
BASEBALL DIAMOND
DIAGRAMS**

2430 E WASHINGTON ST PETALUMA, CA 94954

CITY OF PETALUMA
PUBLIC WORKS & UTILITIES
202 N. McDowell Blvd., PETALUMA, CALIFORNIA, 94954
PH. 707-778-4546 FAX. 707-778-4508

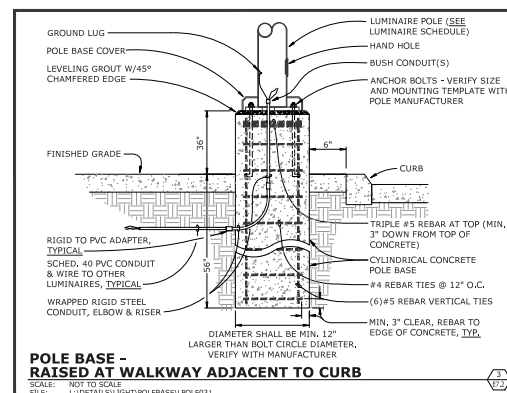
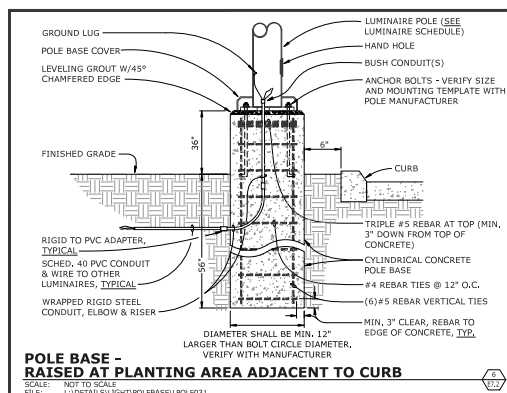
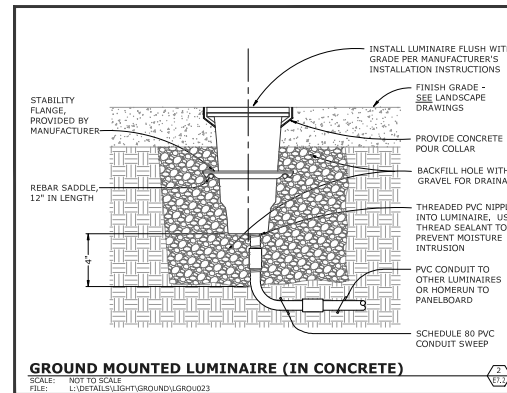
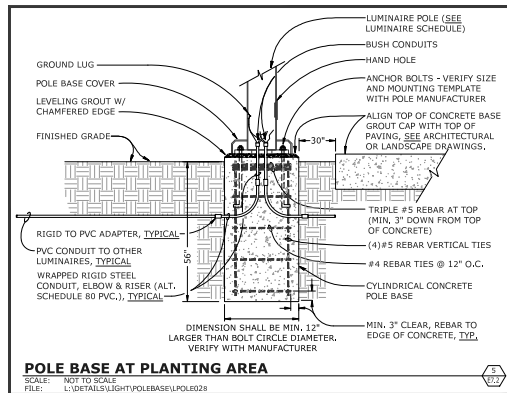
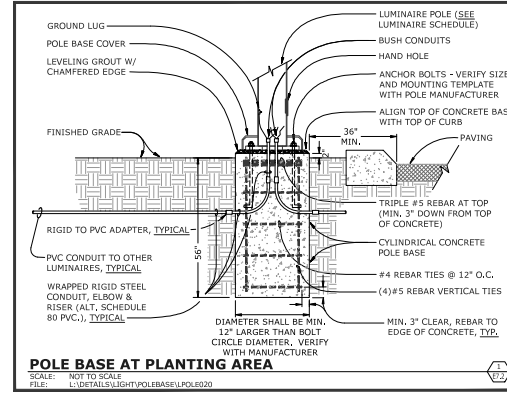
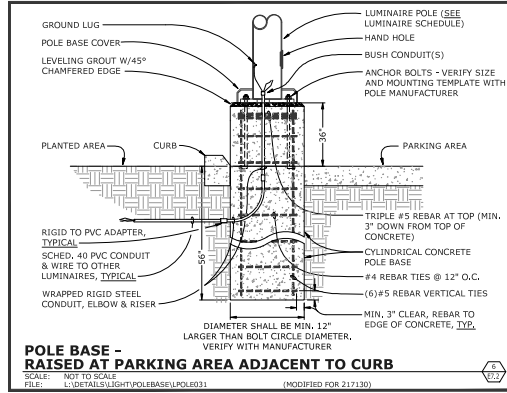
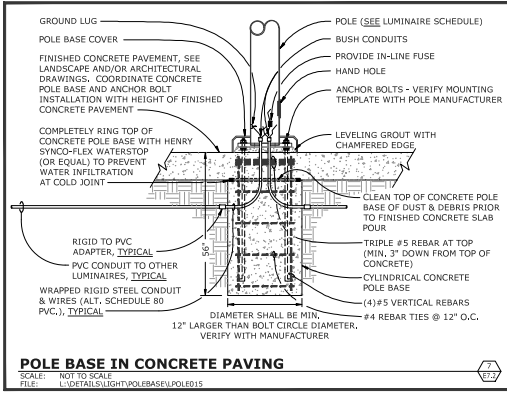
GSM landscape architects, inc.
landscape architecture
site planning
1700 Second Ave., Suite 23
Napa, CA 94959
www.gsm-lan.com

COPYRIGHT © 2021 BY GSM LANDSCAPE ARCHITECTS, INC. ALL RIGHTS RESERVED. THIS DOCUMENT IS THE PROPERTY OF GSM LANDSCAPE ARCHITECTS, INC. AND IS NOT TO BE USED IN WHOLE OR IN PART FOR ANY OTHER PROJECT WITHOUT THE WRITTEN AUTHORIZATION OF GSM LANDSCAPE ARCHITECTS, INC. © 2021 GSM LANDSCAPE ARCHITECTS, INC. ALL RIGHTS RESERVED.



DES. P.L.C.	DATE: 4/12/21
PROJ. MGR.	FILE NO. E10
DATE: P.L.C.	JOB NO. 1626
GSM landscape architects, inc. landscape architecture site planning 1700 Second Ave., Suite 23 Napa, CA 94959 www.gsm-lan.com	
CITY OF PETALUMA PUBLIC WORKS & UTILITIES 202 N. McDowell Blvd., PETALUMA, CALIFORNIA, 94954 PH. 707-778-1546 FAX. 707-778-1508	
PETALUMA COMMUNITY SPORTS FIELDS BASEBALL DIAMOND DETAILS 2430 E WASHINGTON ST PETALUMA, CA 94954	
DATE: 4/12/21 FILE NO. E10 JOB NO. 1626 SHEET NO. E7.1 OF 94	

COPYRIGHT © 2021 BY GSM LANDSCAPE ARCHITECTS, INC. ALL RIGHTS RESERVED. THIS DOCUMENT IS THE PROPERTY OF GSM LANDSCAPE ARCHITECTS, INC. AND IS NOT TO BE REPRODUCED OR TRANSMITTED IN ANY FORM OR BY ANY MEANS, ELECTRONIC OR MECHANICAL, WITHOUT THE WRITTEN PERMISSION OF GSM LANDSCAPE ARCHITECTS, INC. ALL RIGHTS RESERVED.



O'MAHONY & MYER
 ELECTRICAL ENGINEERING AND LIGHTING DESIGN
 4340 Redwood Hwy., Suite 245
 San Rafael, California 94903
 Tel (415) 492-0420 Fax (415) 479-9662
 www.ommconsulting.com

GSM landscape architects, inc.
 landscape architecture
 site planning
 1700 Second Ave., Suite 23
 Napa, CA 94959
 (707) 256-4600
 www.gsm-lab.com

CITY OF PETALUMA
 PUBLIC WORKS & UTILITIES
 202 N. McDowell Blvd., PETALUMA, CALIFORNIA, 94954
 PH. 707-778-1546 FAX. 707-778-4100

**PETALUMA COMMUNITY SPORTS FIELDS
 BASEBALL DIAMOND
 DETAILS**
 2430 E WASHINGTON ST PETALUMA, CA 94954

DATE: 4/12/21
 FILE NO: E12
 JOB NO: 1626
 SHEET NO:
E7.2
 9/ 94

COPYRIGHT OF DOCUMENTS © 2021 LANDSCAPE ARCHITECTS, INC. SHALL NOT BE RESPONSIBLE FOR OR LIABLE FOR UNAUTHORIZED CHANGES TO OR USES OF THESE PLANS. ALL CHANGES TO THE PLANS MUST BE IN WRITING AND MUST BE APPROVED BY EACH LANDSCAPE ARCHITECT, INC. THIS DOCUMENT AND THE DESIGN INFORMATION HEREIN IS AN INSTRUMENT OF PROFESSIONAL SERVICE. IS THE PROPERTY OF GSM LANDSCAPE ARCHITECTS, INC. AND IS NOT TO BE USED IN WHOLE OR IN PART FOR ANY OTHER PROJECT WITHOUT THE WRITTEN APPROVAL OF GSM LANDSCAPE ARCHITECTS, INC. © COPYRIGHT 2021. ALL RIGHTS RESERVED.