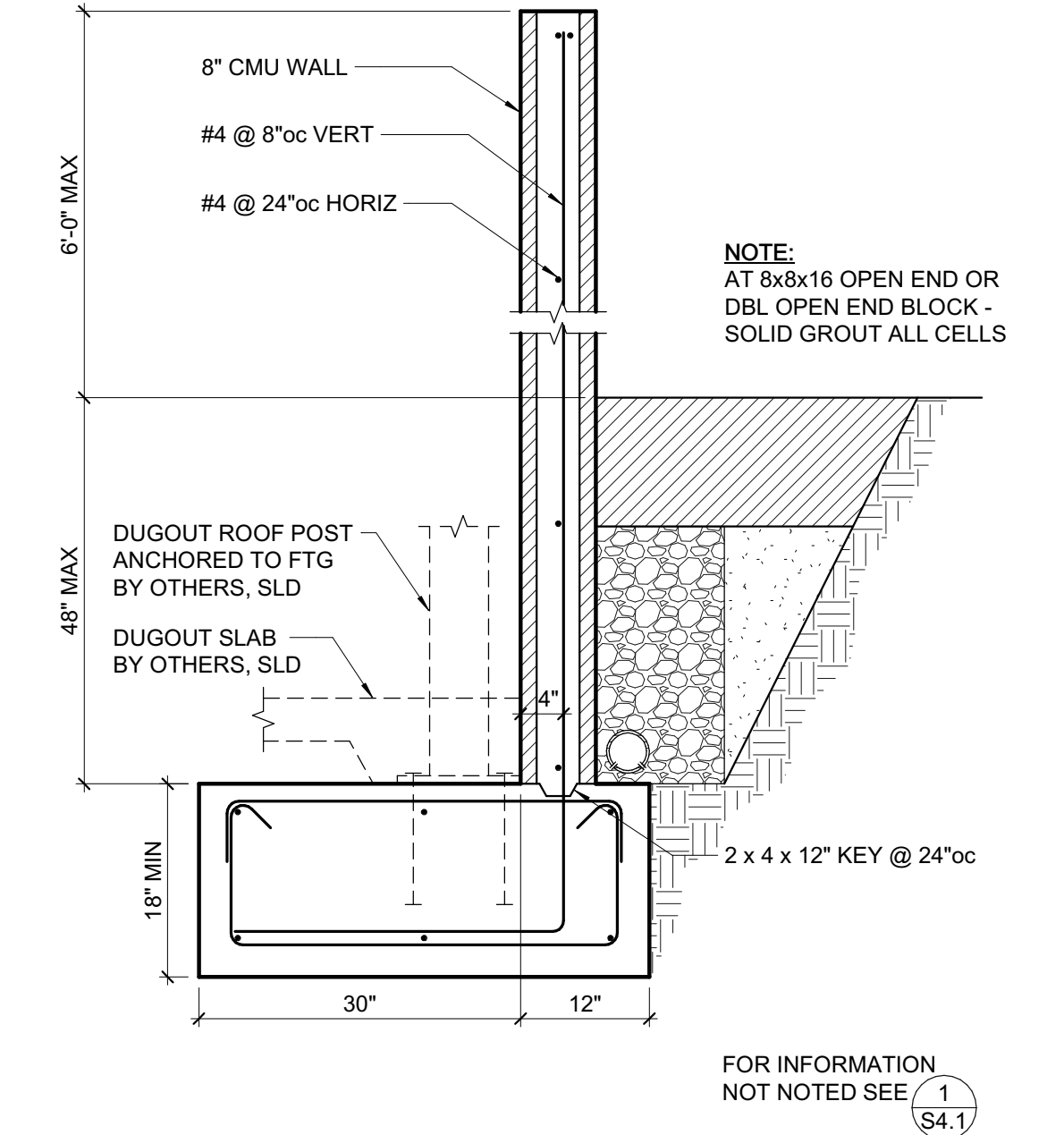
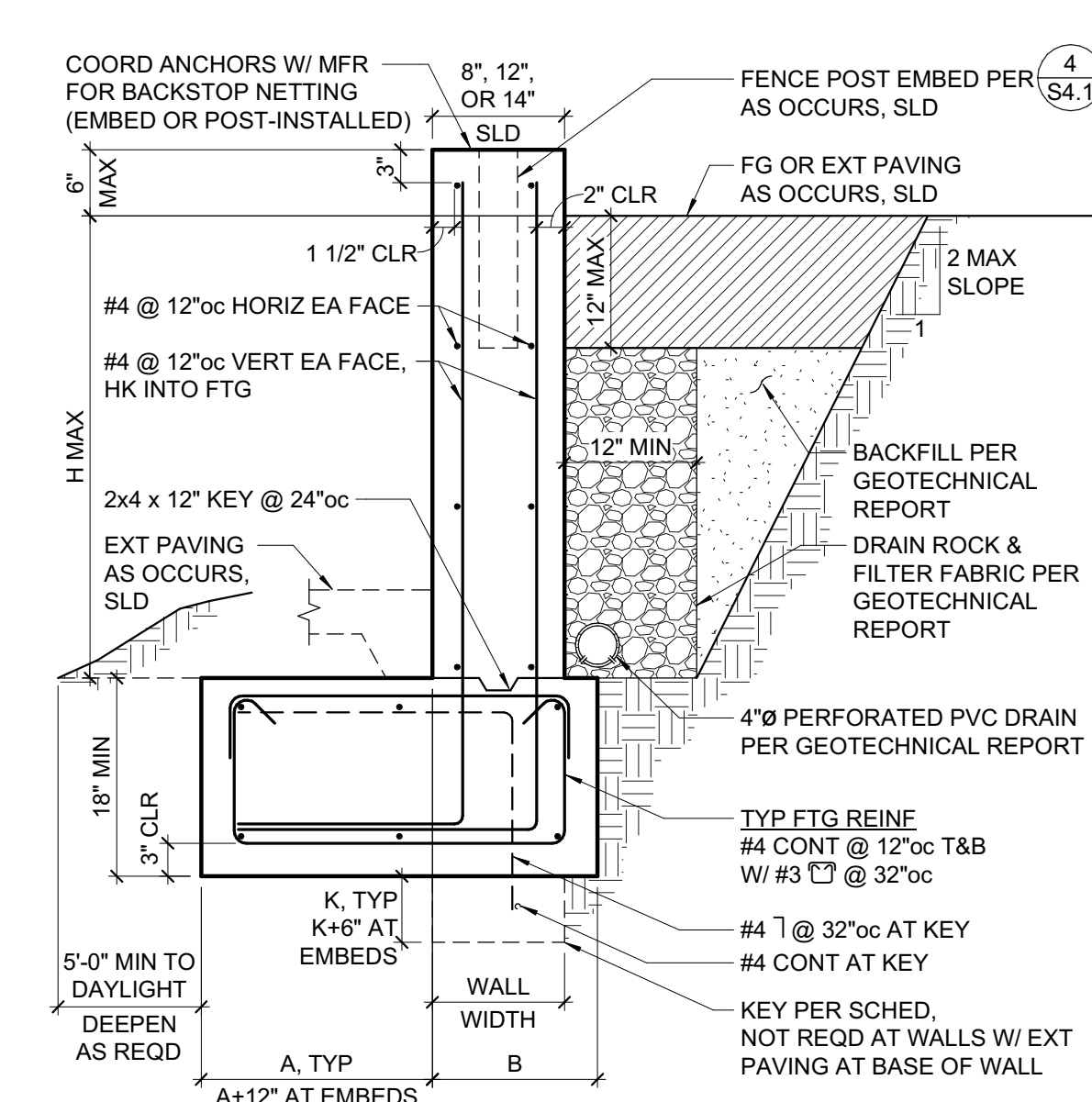
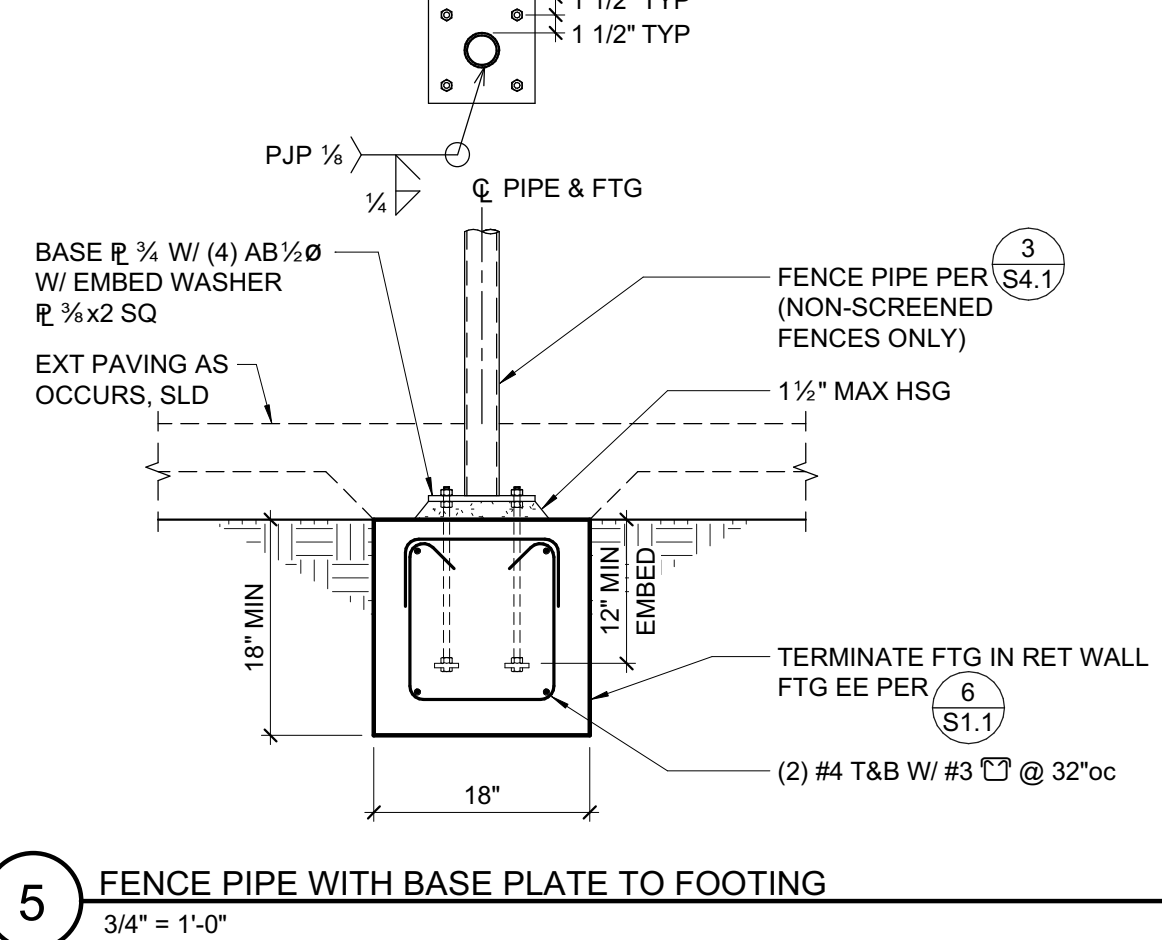


PIPE & PIER SCHEDULE

TYPE	WIND SCREEN?	1/4" MAX PIPE HT ABV GR	1/4" MIN SIZE	MAX SPCG BTWN PIPES	1/4" MIN PIER DEPTH	1/4" PIER DIA
3' FENCE	NO	3'-0"	2 1/2"	10'-0"	-	-
8' FENCE	NO	8'-0"	2 1/2"	10'-0"	5'-0"	18"
8' SINGLE OR DOUBLE GATE	NO	8'-0"	HSS4x4x 1/4"	10'-0"	5'-0"	18"
8' FENCE	YES	8'-0"	4"	10'-0"	6'-0"	18"
8' SINGLE MAINTENANCE GATE	YES	8'-0"	4"	10'-0"	6'-0"	18"
8' DOUBLE MAINTENANCE GATE	YES	8'-0"	4"	10'-0"	6'-0"	18"
12' FENCE	YES	12'-0"	6 3/4"	10'-0"	7'-6"	24"
12' FENCE W/ 8' SINGLE GATE	YES	12'-0"	6 3/4"	10'-0"	7'-6"	24"
12' DOUBLE MAINTENANCE GATE	YES	12'-0"	6 3/4"	12'-0"	8'-0"	24"
FOUL POLE	-	30'-0"	PER MFR	-	6'-0"	18"
BARRIER NET W/ 8' FENCE	-	30'-0"	PER MFR	25'-0"	9'-0"	24"
FLAG POLE	-	35'-0"	PER MFR	-	6'-0"	36"

NOTES:
1. IF GROUND WATER IS ENCOUNTERED AT PIERS CONSULT GEOTECHNICAL ENGINEER FOR PIER CASTING REQUIREMENTS.
2. WINDSCREENS, PRIVACY NETTINGS, AND SLATS ARE ALLOWED ONLY WHERE SPECIFICALLY NOTED.



REVISIONS

NO.	DATE	DESCRIPTION	BY
1	6/1/2021	Bid Clarification	KPB / AIZ

6/1/2021 2:01:50 PM C:\nvit_local\19604_Petaluma_Sports_Field_phase2-R20C_kyieb@ia.com.nvt

DES: KPB
DRAWN: KPB
CHKD: AIZ
GSM landscape architects, inc.
landscape architecture
site planning
1700 Socol Ave., Suite 23
Napa, CA 94559
(707) 255-4630
www.gsmainc.com



CITY OF PETALUMA
PUBLIC WORKS & UTILITIES
202 N. McDowell Blvd., PETALUMA, CALIFORNIA, 94954
PH. 707-778-4546 FAX. 707-778-4508

ZFA STRUCTURAL ENGINEERS
1212 fourth street | suite z
santa rosa ca 95404
zfa job no. 19604
zfa.com
707.528.0992
copyright © 2021

PETALUMA COMMUNITY SPORTS FIELDS
BASEBALL DIAMOND
FOUNDATION DETAILS
2430 E. WASHINGTON ST. PETALUMA, CA 94954
JUN 1 2021

DATE: APRIL 12, 2021
FILE NO:
JOB NO.: 19604
SHEET NO:
S4.1
OF 59