

PROJECT SUPPORT STATEMENT AT&T MOBILITY

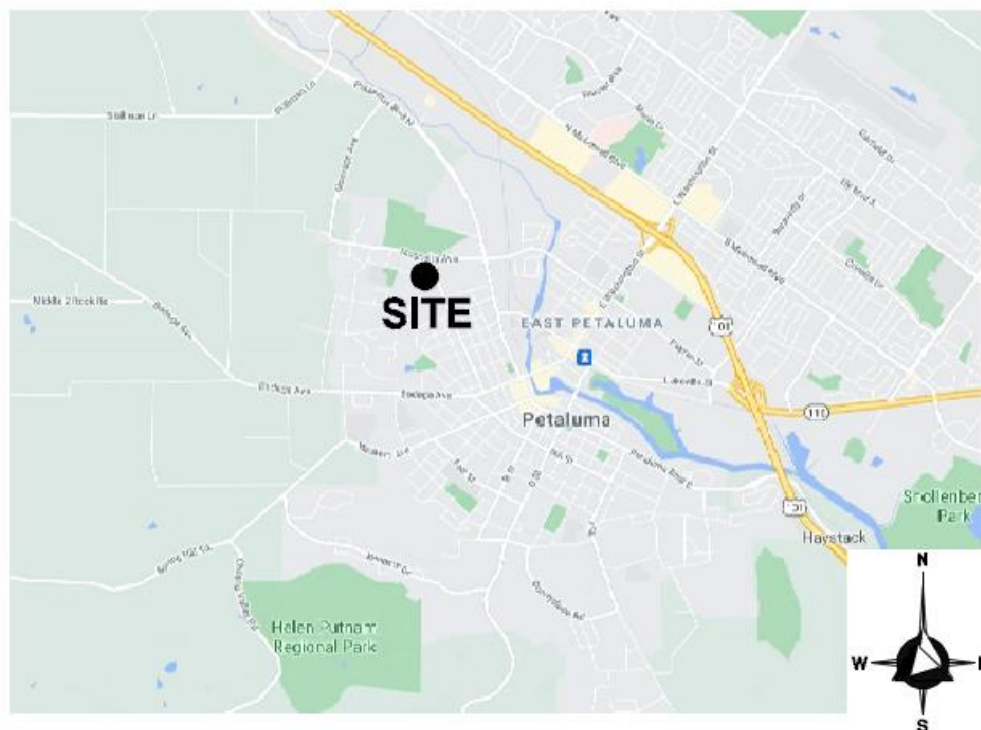
Site Name: St. Vincent de Paul High School Small Cell
Location: 849 Keokuk St., Petaluma, CA 94952
APN: 006-021-035

Introduction

New Cingular Wireless PCS, LLC d/b/a AT&T Mobility is seeking to improve telecommunication service on the campus of St. Vincent De Paul High School, including internet, phone, and emergency service. To do so, AT&T seeks to install a small cell facility consisting of a single rooftop antenna and support equipment installed within an existing mechanical room.

This network development will increase public safety in the area. This site will also serve as a backup to the existing landline service in the area and will provide improved mobile communications. It will also provide emergency 911 service to customers of all carriers.

VICINITY MAP



Location/Design

The proposed design calls for a single, two foot tall canister antenna mounted on a three foot pipe mount on the lower roof of St. Vincent De Paul High School, for a total height above the ground of 17', well below the height of the upper roof. The supporting equipment will be mounted on a rack within an existing mechanical space and will not be visible on the outside.

Project Location

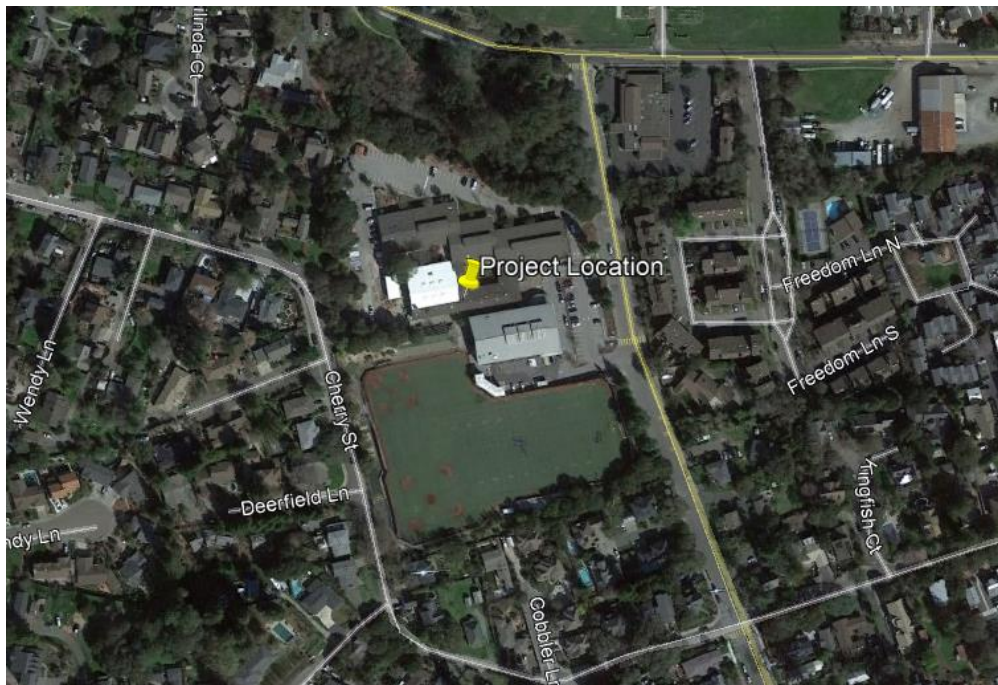


Photo Simulation of view looking West from Keokuk St



As you can see from the photo simulation, the two foot tall rooftop antenna is not readily visible even from the most exposed vantage point along Keokuk Street. A full set of photosims from various vantage points has been enclosed – the facility is not noticeable from the public right of way or nearby properties because of existing trees, the upper roof of the building, and the small size of the proposed rooftop equipment.

Description of Coverage Area/Alternatives Analysis

The coverage goal for this small cell facility is to improve service on the St. Vincent de Paul campus, which is located entirely on the subject parcel. As a small, low powered facility (20 watts total) serving the campus alone, there is no alternate, off campus location that could serve this function. The specific location on the rooftop was selected in consultation with school staff and was selected because it is able to cover the nearby classroom buildings as well as the field house while complying with City rules and regulations.

Minor Facility Statutory Requirements – Municipal Code Section 14.44.090

- A. *The minor antenna use involved is accessory to the primary use of the property which is not a telecommunications facility. The facility complies with this requirement. The primary use of the property is a school.*
- B. *The combined effective radiated power radiated by all the antenna present on the parcel is less than one thousand five hundred watts. The facility complies with this requirement. The facility consists of a single NNV4SSP-36OS-F4 antenna that will have a total power of 20 watts. There are no other wireless telecommunications facilities on the property.*
- C. *The combined NIER levels produced by all the antennas present on the parcel do not exceed the NIER standard established in Section 14.44.290 of this chapter. The facility complies with this requirement. An RF study this facilities compliance is included in this application.*
- D. *The antenna is not situated between the primary building on the parcel and any public or private street adjoining the parcel, so as to create a negative visual impact. The facility complies with this requirement. Site plans and photo simulations of the facility have been included in this application.*
- E. *The antenna is located outside all yard and street setbacks specified in the zoning district in which the antenna is to be located and no closer than twenty feet to any property line. The facility complies with this requirement. Site plans and photo simulations of the facility have been included in this application.*
- F. *None of the guy wires employed are anchored within the area in front of the primary structure on the parcel. The facility complies with this requirement. No guy wires are involved.*
- G. *No portion of the antenna array extends beyond the property lines or into the area in front of the primary building on the parcel, so as to create a negative visual impact. The facility complies with this requirement. Site plans and photo simulations of the facility have been included in this application.*
- H. *At least ten feet of horizontal clearance exists between the antenna and any power lines, unless more clearance is required to meet CPUC standards. The facility complies with*

this requirement. Site plans and photo simulations of the facility have been included in this application. There are no nearby power lines, let alone power lines within ten feet of the proposed facility.

- I. *All towers, masts and booms are made of a noncombustible material and all hardware such as brackets, turnbuckles, clips, and similar type equipment subject to rust or corrosion has been protected either by galvanizing or sheradizing after forming. The facility complies with this requirement. Site plans have been included in this application.*
- J. *The materials employed are not unnecessarily bright, shiny or reflective and are of a color and type that blends with the surroundings to the greatest extent possible. The facility complies with this requirement. Site plans and photo simulations of the facility have been included in this application.*
- K. *The installation is in compliance with the manufacturer's structural specifications and the requirements of the Uniform Building Code including Section 507. Exceptions Table SD, Table 23-24 and Section 3602, as applicable. The facility complies with this requirement. Site plans and structural calculations have been included with this application.*
- L. *The height of the facility shall include the height of any structure upon which it is placed, unless otherwise defined within this chapter. The site plans included in the application comply with this requirement.*
- M. *No more than two satellite dishes are allowed on the parcel, one of which may be over three feet in diameter, but no larger than eight feet in diameter, with adequate screening, at the discretion of the planning director. The facility complies with this requirement. No satellite dishes are included in the design.*
- N. [There is no sub-section N in section 14.44.90]
- O. *Any ground mounted satellite dish with a diameter greater than four feet that is situated less than five times its actual diameter from adjoining property lines has screening treatments located along the antenna's non-reception window axes and low-level landscape treatments along its reception window axes. The facility complies with this requirement. There are no ground mounted satellite dishes included in the design.*
- P. *Any roof mounted panel antenna with a face area greater than three and one-half square feet shall be located so as to be effectively unnoticeable. The facility complies with this requirement. No panel antennas are included in the design.*
- Q. *Sufficient anti-climbing measures have been incorporated into the facility, as needed, to reduce potential for trespass and injury. The facility complies with this requirement. Access to the roof of the building is already well secured.*
- R. *The facility is located more than seventy-five feet from any residential dwelling unit, unless recognized as an exempt facility as set forth in Section 14.44.020(S)(1). The facility complies with this requirement. There are no residential dwelling units on the property and the nearest property boundary is 204'4" away (see site plans.) There are therefore no residential dwelling units within 75' of the property.*
- S. *No trees larger than twenty inches in diameter measured at four and one-half feet high on the tree would have to be removed. The facility complies with this requirement. No trees will be removed.*
- T. *Any new building(s), structure(s), control panel(s), etc. shall be effectively screened from view from off-site. The facility complies with this requirement. Photosims and site plans have been included with this application.*

- U. The site has an average cross slope of ten percent or less. The facility complies with this requirement. A single antenna is being placed on an existing rooftop.*
- V. All utility lines to the facility from public or private streets shall be underground. The facility complies with this requirement. Site plans have been included with this application. The facility will be served by existing utilities in the building.*
- W. If located within a recognized historic district, or on a structure recognized as a historic landmark, that adequate screening has been provided. The facility is well screened and is not within a recognized historic district or on a structure recognized as a historic landmark.*
- X. The general criteria set forth in this chapter are met. The facility complies with this requirement.*

Additional Information

Compliance with FCC Standards

This project will not interfere with any TV, radio, telephone, satellite, or any other signals. Any interference would be against federal law and a violation of AT&T's FCC License. An RF study demonstrating FCC compliance has been completed by a third party engineer and included with this application.

Construction Schedule

The construction of the facility will be in compliance with all local rules and regulations. The crew size will range from two to ten individuals. The construction phase of the project will last approximately two to three months and will not exceed acceptable noise levels.

Notice of Actions Affecting Development Permit

AT&T requests notice of any proposal to adopt or amend the: general plan, specific plan, zoning ordinance, ordinance(s) affecting building or grading permits that would in any manner affect this development permit. Any such notice may be sent to 2009 V Street, Sacramento, CA 95818.