

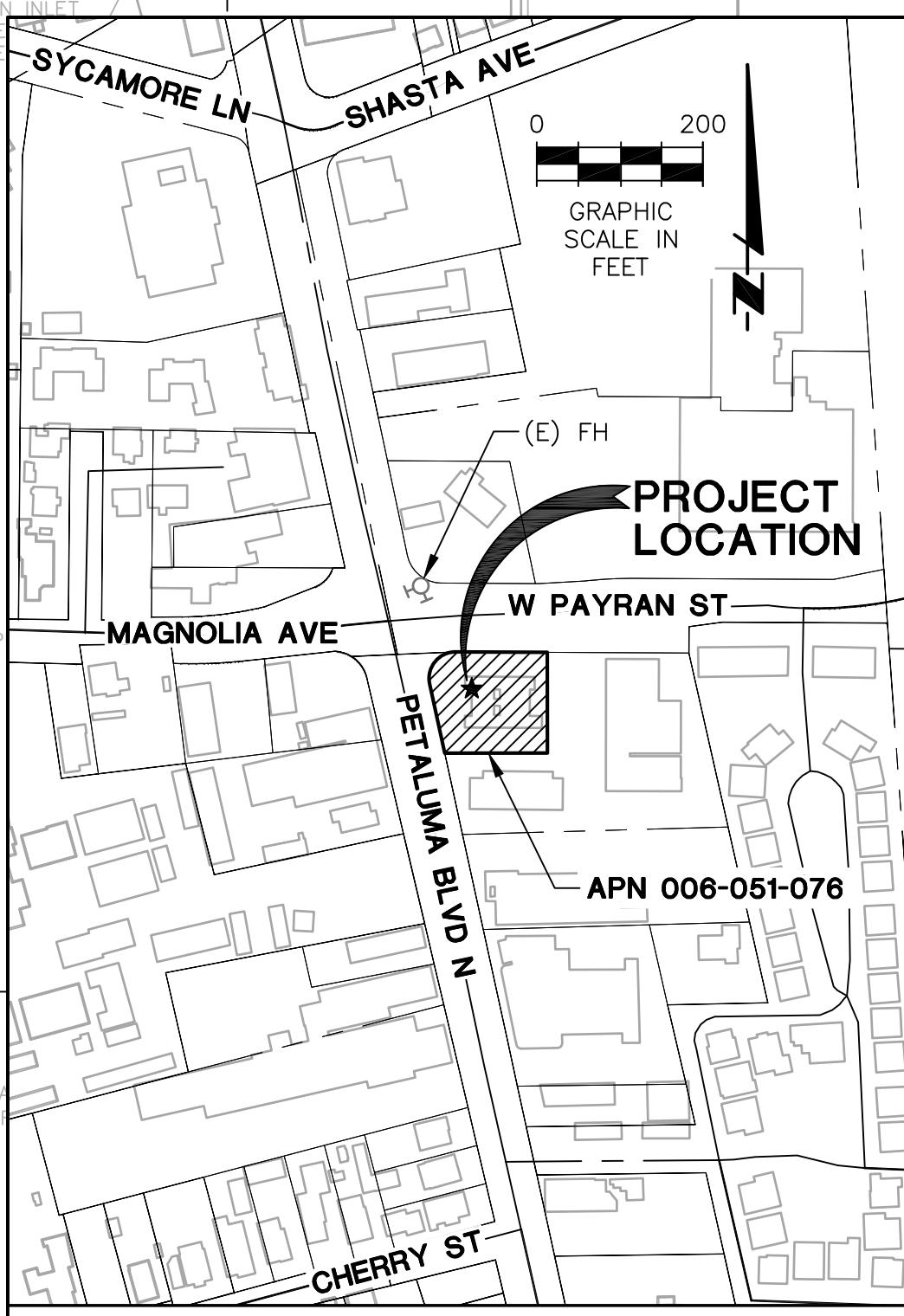
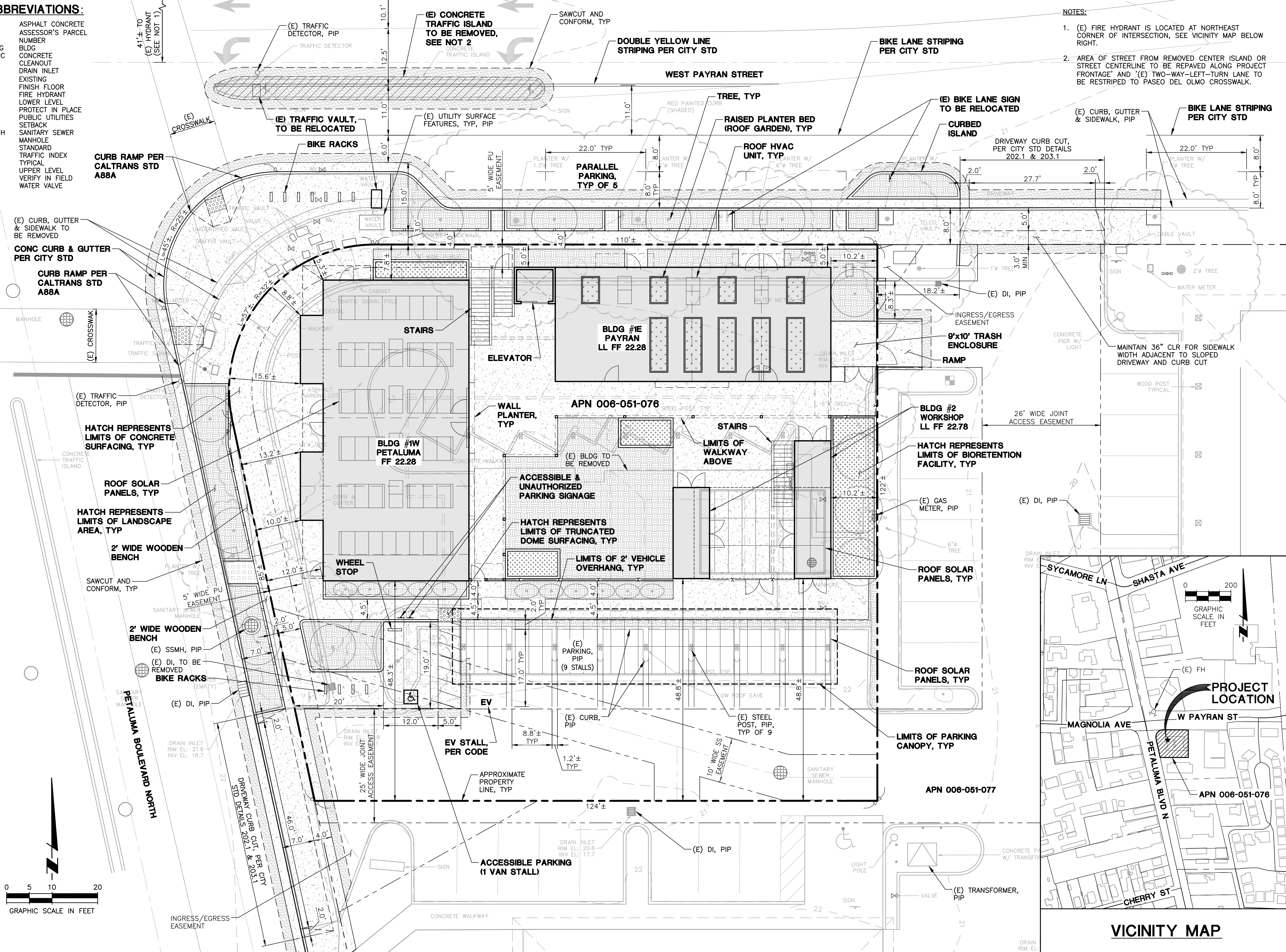
THIS DOCUMENT, AND THE IDEAS AND DESIGNS INCORPORATED HEREIN, AS AN INSTRUMENT OF PROFESSIONAL SERVICE, IS THE PROPERTY OF SUMMIT ENGINEERING, INC. AND IS NOT TO BE USED IN WHOLE OR IN PART, FOR ANY OTHER PROJECT WITHOUT THE WRITTEN AUTHORIZATION OF SUMMIT ENGINEERING, INC.

ABBREVIATIONS:

AC	ASPHALT CONCRETE
APN	ASSESSOR'S PARCEL NUMBER
BLDG	BLDG
CONC	CONCRETE
CO	CLEANOUT
DI	DRAIN INLET
(E)	EXISTING
FF	FINISH FLOOR
FH	FIRE HYDRANT
LL	LOWER LEVEL
PIP	PROTECT IN PLACE
PU	PUBLIC UTILITIES
SB	SETBACK
SSMH	SANITARY SEWER MANHOLE
STD	STANDARD
TI	TRAFFIC INDEX
TYP	TYPICAL
UL	UPPER LEVEL
VIF	VERIFY IN FIELD
WV	WATER VALVE

NOTES:

- (E) FIRE HYDRANT IS LOCATED AT NORTHEAST CORNER OF INTERSECTION, SEE VICINITY MAP BELOW RIGHT.
- AREA OF STREET FROM REMOVED CENTER ISLAND OR STREET CENTERLINE TO BE REPAVED ALONG PROJECT FRONTAGE AND (E) TWO-WAY-LEFT-TURN LANE TO BE RESTRIPTED TO PASEO DEL OLMO CROSSWALK.



890 CoOp

890 CoOp LLC
890 Petaluma Boulevard N
Petaluma, CA

City of Petaluma
SPAR Submission
October 2021

Overall Site Plan

Summit Engineering, Inc.
463 Aviation Blvd., Suite 200
Santa Rosa, CA 95403

Sheet

C1

ABBREVIATIONS:

- AD AREA DRAIN
- APN ASSESSOR'S PARCEL NUMBER
- BLDG BLDG
- BOT BOTTOM
- CONC CONCRETE
- CONF CONFORM
- CO CLEANOUT
- DI DRAIN INLET
- DS DOWNSPOUT
- (E) EXISTING
- EG EXISTING GRADE
- FF FINISH FLOOR
- FG FINISH GRADE
- FS FIRE HYDRANT
- FS FINISH SURFACE
- GB GRADE BREAK
- LIDF LOW IMPACT DEVELOPMENT FACILITY
- LL LOWER LEVEL
- OR OVERFLOW RISER
- PD PLANTER DRAIN
- PIP PROTECT IN PLACE
- PU PUBLIC UTILITIES
- SB SETBACK
- SD STORM DRAIN
- SF SQUARE FEET
- SS SANITARY SEWER
- SS SANITARY SEWER MANHOLE
- STD STANDARD
- TC TOP OF CONCRETE
- TCC TOP OF CONCERE CURB
- TYP TYPICAL
- UL UPPER LEVEL
- VIF VERIFY IN FIELD
- WV WATER VALVE

GRADING & DRAINAGE LEGEND

- STORM DRAIN (SD)
- DOWNSPOUT (DS)
- SLOPE
- ELEVATION
- GRADE BREAK
- BIORETENTION FACILITY
- RIPRAP

890 CoOp

890 CoOp LLC
890 Petaluma Boulevard N
Petaluma, CA

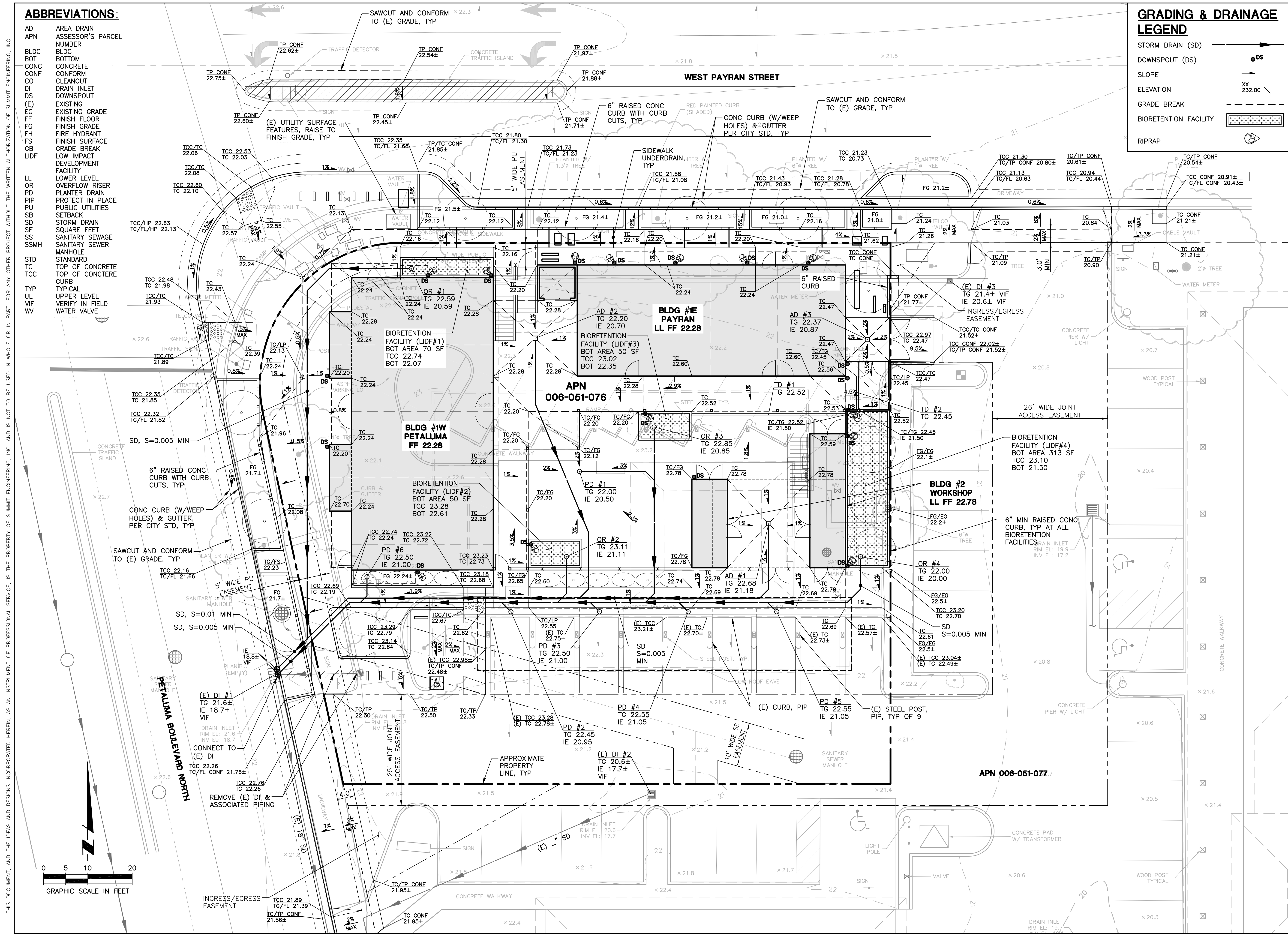
City of Petaluma
SPAR Submission
October 2021

Preliminary Grading & Drainage Plan

Summit Engineering, Inc.
463 Aviation Blvd., Suite 200
Santa Rosa, CA 95403

Sheet

C2



THIS DOCUMENT, AND THE IDEAS AND DESIGNS INCORPORATED HEREIN, AS AN INSTRUMENT OF PROFESSIONAL SERVICE, IS THE PROPERTY OF SUMMIT ENGINEERING, INC. AND IS NOT TO BE USED IN WHOLE OR IN PART, FOR ANY OTHER PROJECT WITHOUT THE WRITTEN AUTHORIZATION OF SUMMIT ENGINEERING, INC.

THIS DOCUMENT, AND THE IDEAS AND DESIGNS INCORPORATED HEREIN, AS AN INSTRUMENT OF PROFESSIONAL SERVICE, IS THE PROPERTY OF SUMMIT ENGINEERING, INC. AND IS NOT TO BE USED IN WHOLE OR IN PART FOR ANY OTHER PROJECT WITHOUT THE WRITTEN AUTHORIZATION OF SUMMIT ENGINEERING, INC.

ABBREVIATIONS:

- AD AREA DRAIN
- APN ASSESSOR'S PARCEL NUMBER
- BLDG BLDG
- CO CLEANOUT
- DI DRAIN INLET
- DS DOWNSPOUT
- (E) EXISTING
- FF FINISH FLOOR
- FH FIRE HYDRANT
- FP FIRE PROTECTION
- IRR IRRIGATION
- IRR LOW IMPACT DEVELOPMENT FACILITY
- LDF LOWER LEVEL OVERFLOW RISER
- LL OR PLANTER DRAIN
- PD PIP
- PIP PLANTER DRAIN
- PROTECT IN PLACE PUBLIC UTILITIES
- SB SETBACK
- SD STORM DRAIN
- SF SQUARE FEET
- SS SANITARY SEWER
- SSMH SANITARY SEWER MANHOLE
- STD STANDARD
- TYP TYPICAL
- UL UPPER LEVEL
- VIF VERIFY IN FIELD
- W WATER
- WV WATER VALVE

UTILITY LEGEND

- STORM DRAIN (SD)
- SANITARY SEWER (SS)
- GREASE WASTE (GW)
- FIRE PROTECTION (FP)
- WATER (W)
- IRRIGATION (IRR)
- GAS (G)
- DOWNSPOUT
- BIORETENTION FACILITY
- RIPRAP

890 CoOp

890 CoOp LLC
890 Petaluma Boulevard N
Petaluma, CA

City of Petaluma
SPAR Submission
October 2021

Utility Plan

Summit Engineering, Inc.
463 Aviation Blvd., Suite 200
Santa Rosa, CA 95403

Sheet

C3

