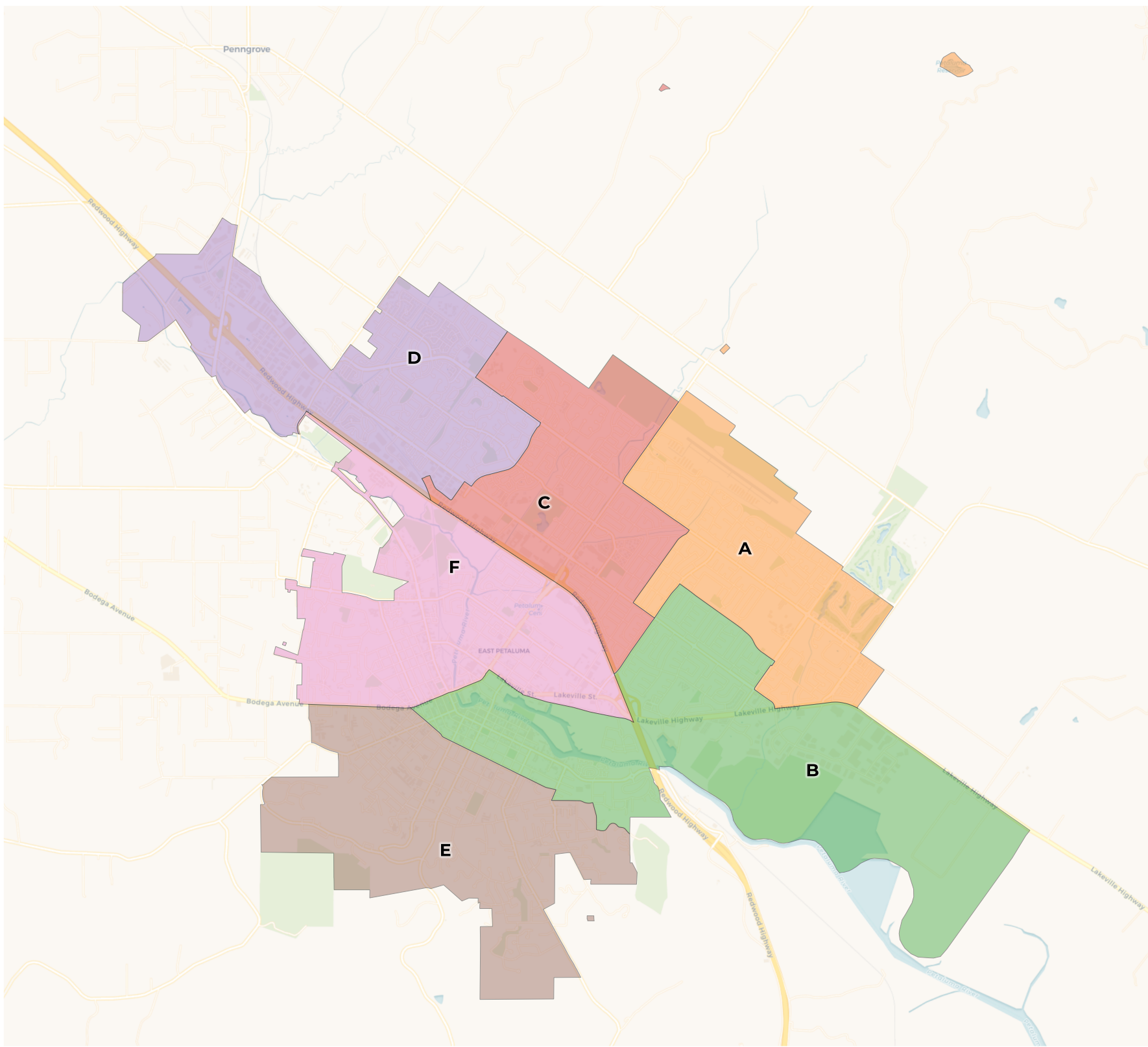


**REDISTRICTING
PARTNERS**

City of Petaluma
Draft Plan B



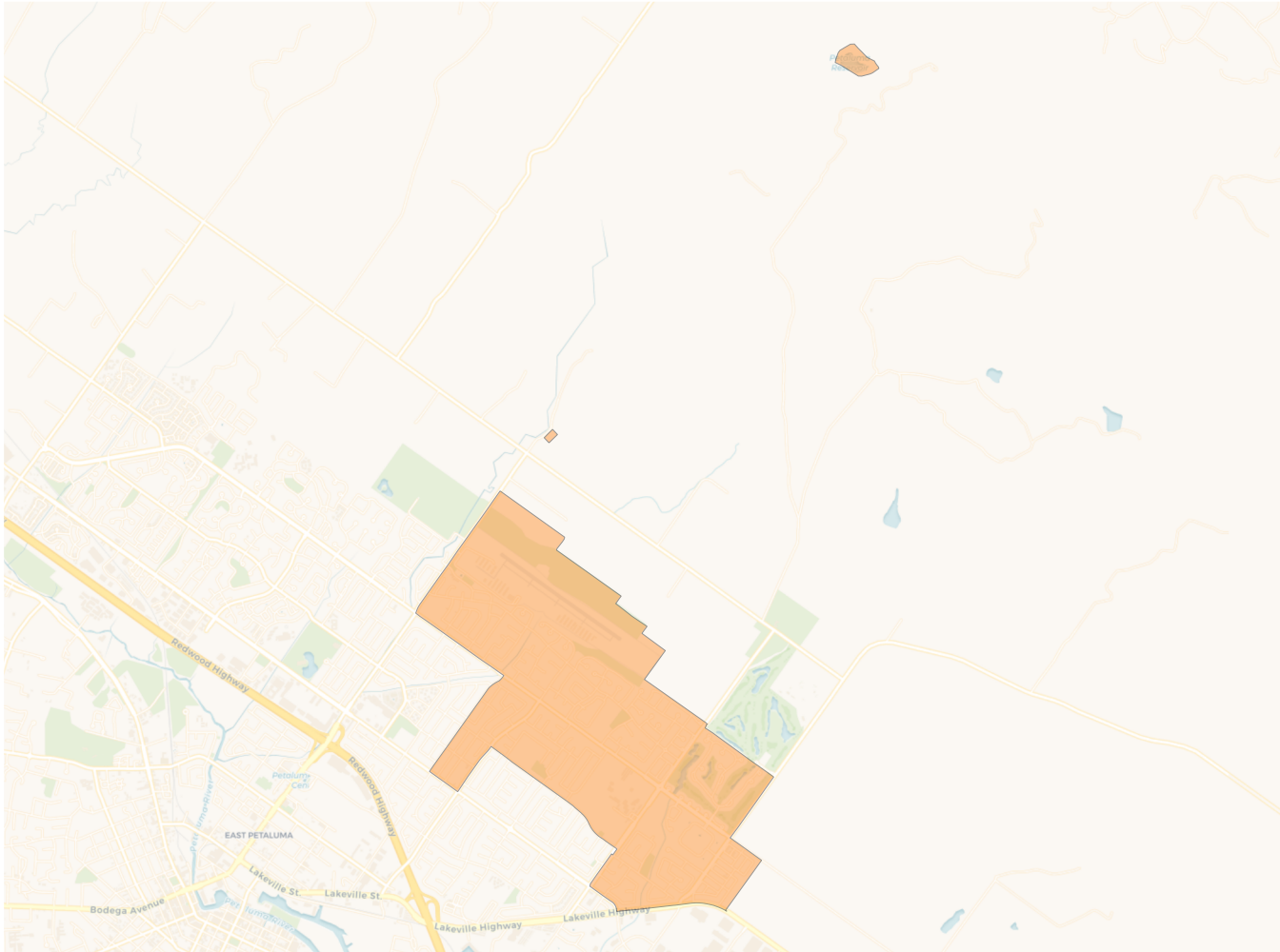
2020 Census

	A	B	C	D	E	F
Population	10,310	10,046	10,203	9,807	9,789	9,691
Deviation	336	72	229	-167	-185	-283
Deviation %	3.4%	0.7%	2.3%	-1.7%	-1.9%	-2.8%
Other	7,330	6,808	6,858	6,780	8,051	6,787
Other %	71.1%	67.8%	67.2%	69.1%	82.2%	70.0%
Latino	2,295	2,525	2,645	2,225	1,410	2,534
Latino %	22.3%	25.1%	25.9%	22.7%	14.4%	26.1%
Asian	566	499	567	675	253	252
Asian %	5.5%	5.0%	5.6%	6.9%	2.6%	2.6%
Black	119	214	133	127	75	118
Black %	1.2%	2.1%	1.3%	1.3%	0.8%	1.2%

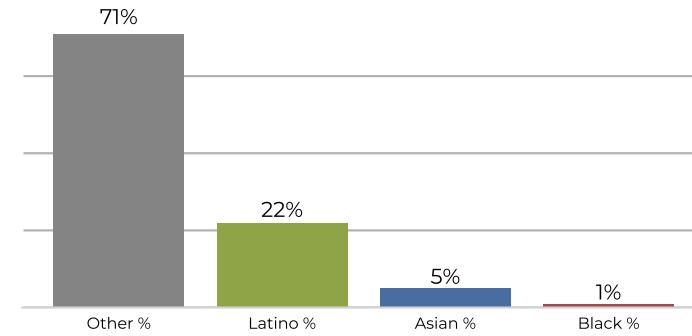
Citizen Voting Age Population (CVAP)

	A	B	C	D	E	F
Total CVAP	7,623	6,824	7,346	6,914	7,571	7,044
Other CVAP	6,210	5,534	5,882	5,533	6,599	5,524
Other CVAP %	81.5%	81.1%	80.1%	80.0%	87.2%	78.4%
Latino CVAP	1,018	854	1,085	900	721	1,252
Latino CVAP %	13.4%	12.5%	14.8%	13.0%	9.5%	17.8%
Asian CVAP	354	276	231	399	239	165
Asian CVAP %	4.6%	4.0%	3.1%	5.8%	3.2%	2.3%
Black CVAP	41	160	148	82	12	103
Black CVAP %	0.5%	2.3%	2.0%	1.2%	0.2%	1.5%

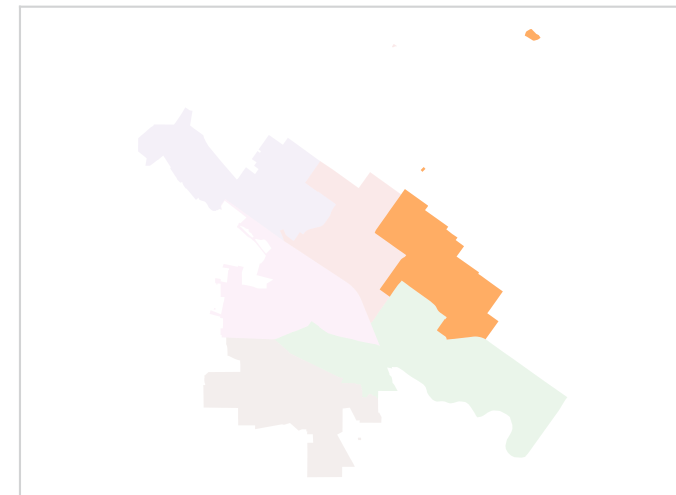
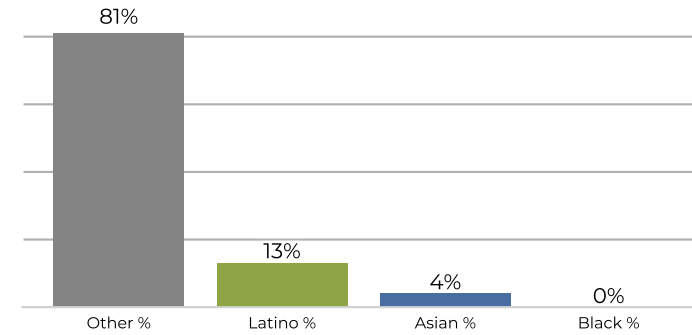
District A



2020 Census

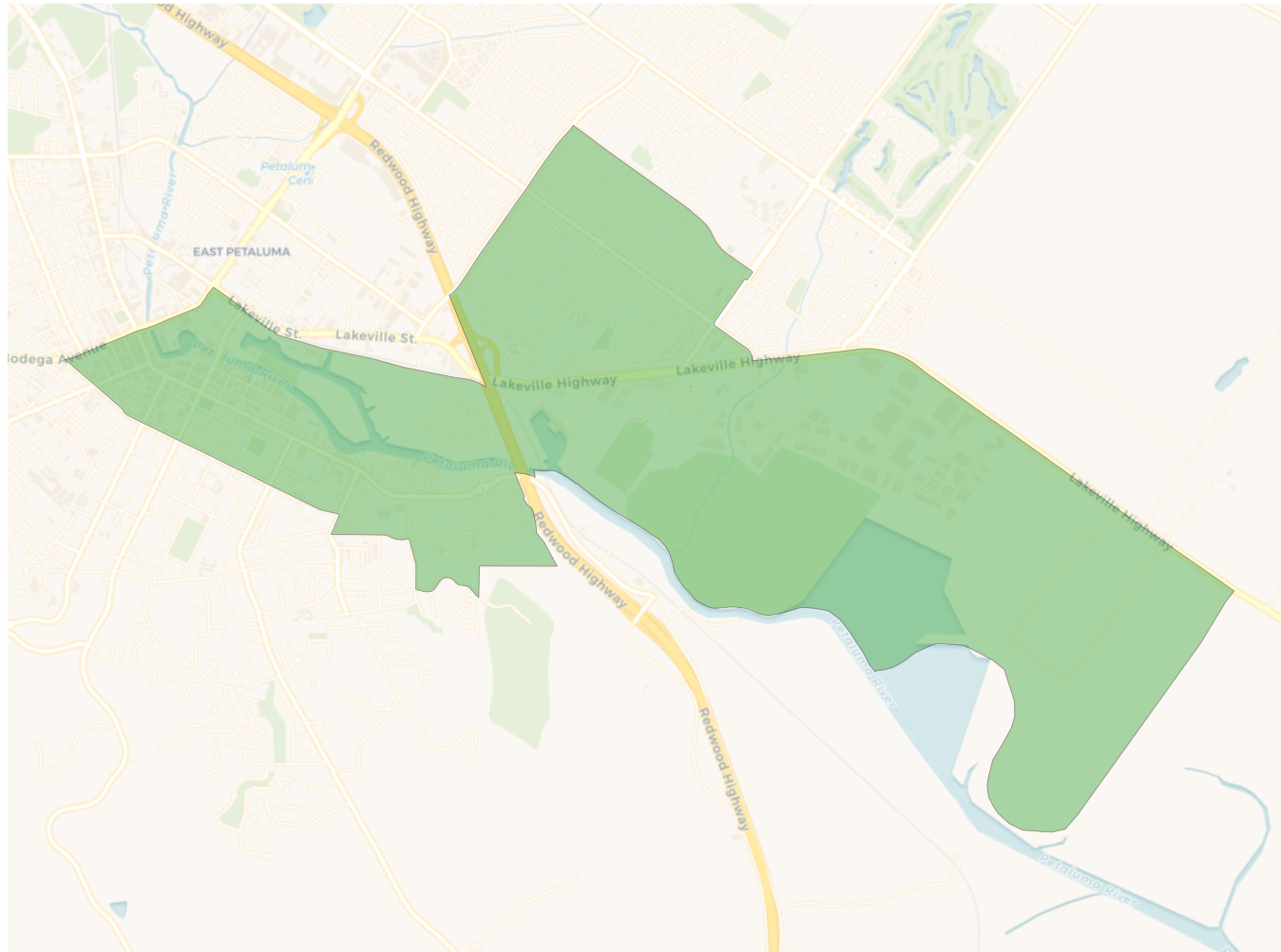


Citizen Voting Age Population

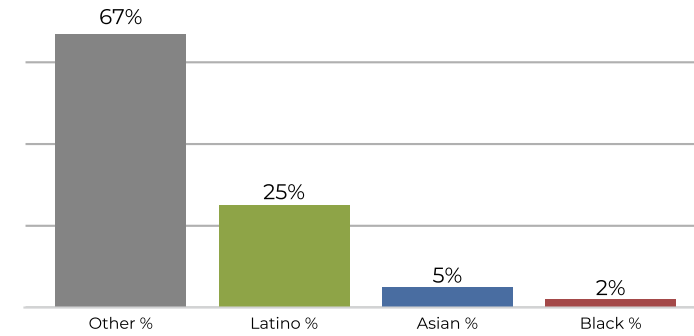


Population	Deviation	Deviation %	Other	Other %	Latino	Latino %	Asian	Asian %	Black	Black %
10,310	336	3.4%	7,330	71.1%	2,295	22.3%	566	5.5%	119	1.2%
Total CVAP	Other CVAP	Other CVAP %	Latino CVAP	Latino CVAP %	Asian CVAP	Asian CVAP %	Black CVAP	Black CVAP %		
7,623	6,210	81.5%	1,018	13.4%	354	4.6%	41	0.5%		

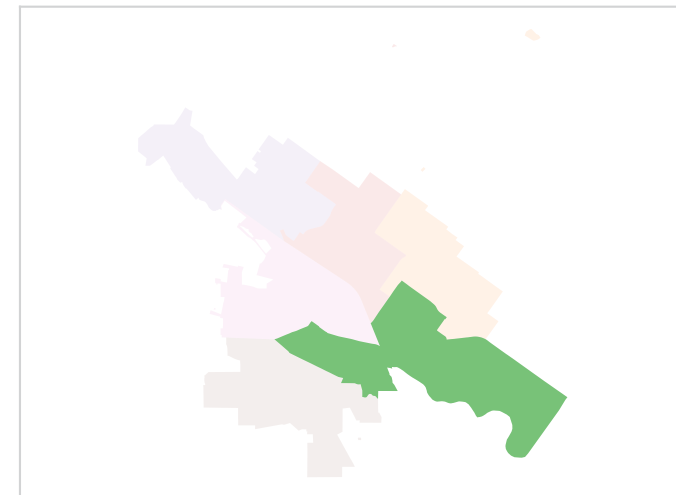
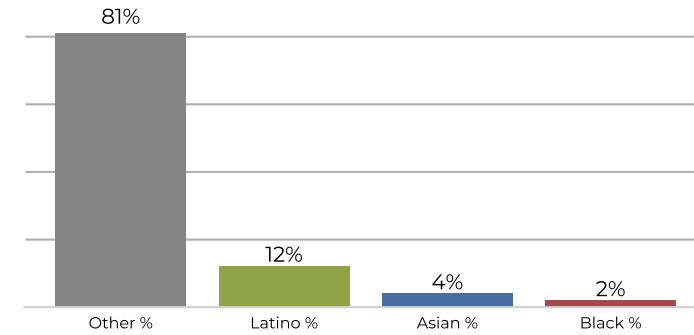
District B



2020 Census

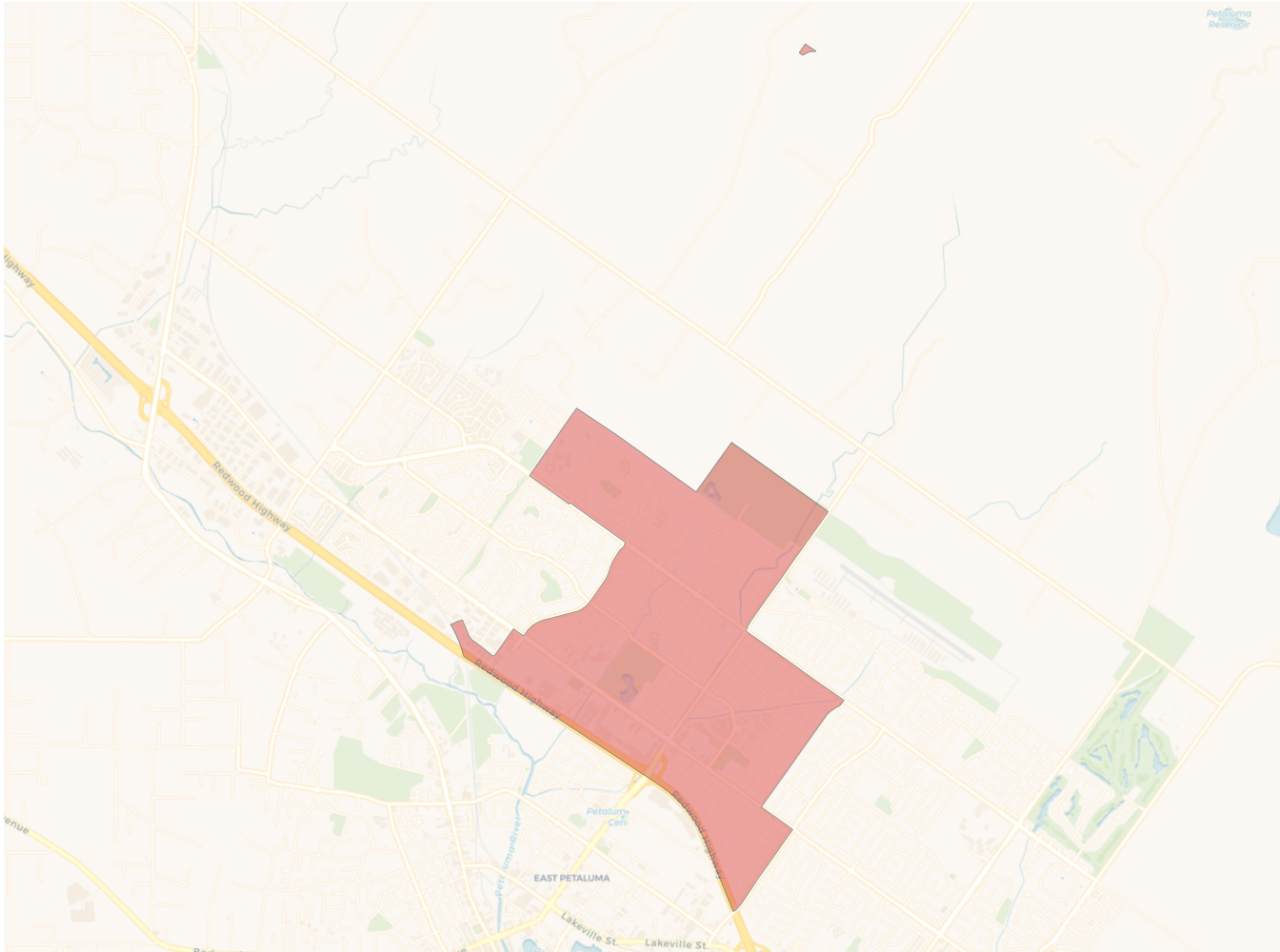


Citizen Voting Age Population

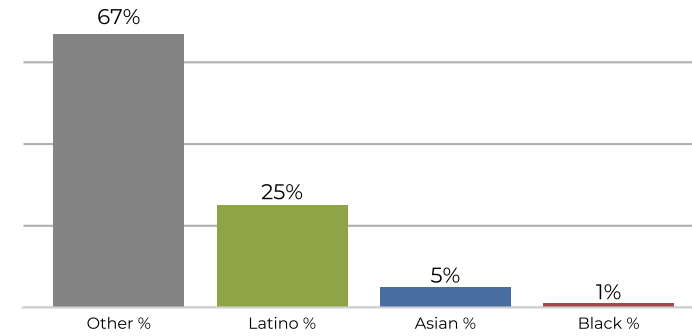


Population	Deviation	Deviation %	Other	Other %	Latino	Latino %	Asian	Asian %	Black	Black %
10,046	72	0.7%	6,808	67.8%	2,525	25.1%	499	5.0%	214	2.1%
Total CVAP	Other CVAP	Other CVAP %	Latino CVAP	Latino CVAP %	Asian CVAP	Asian CVAP %	Black CVAP	Black CVAP %		
6,824	5,534	81.1%	854	12.5%	276	4.0%	160	2.3%		

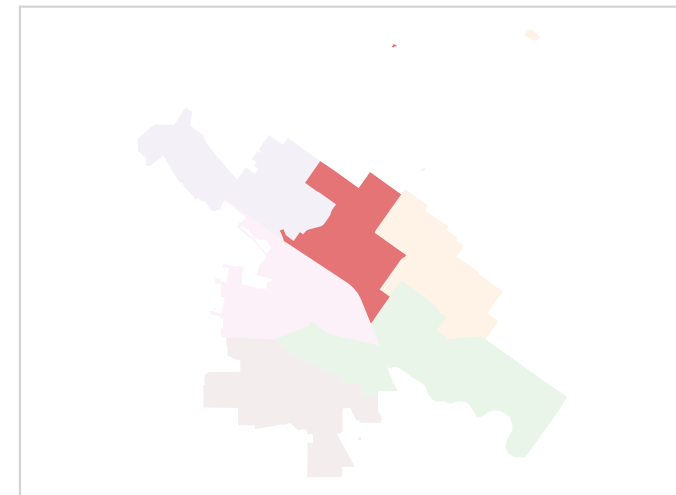
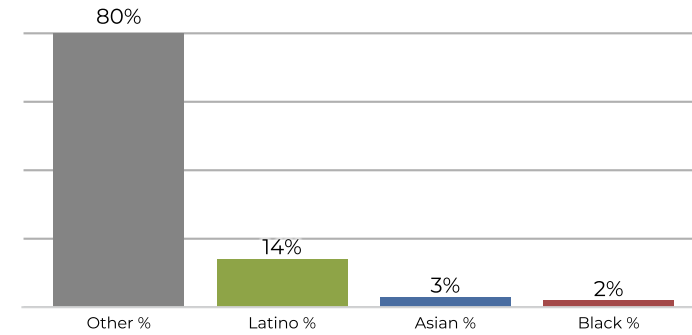
District C



2020 Census

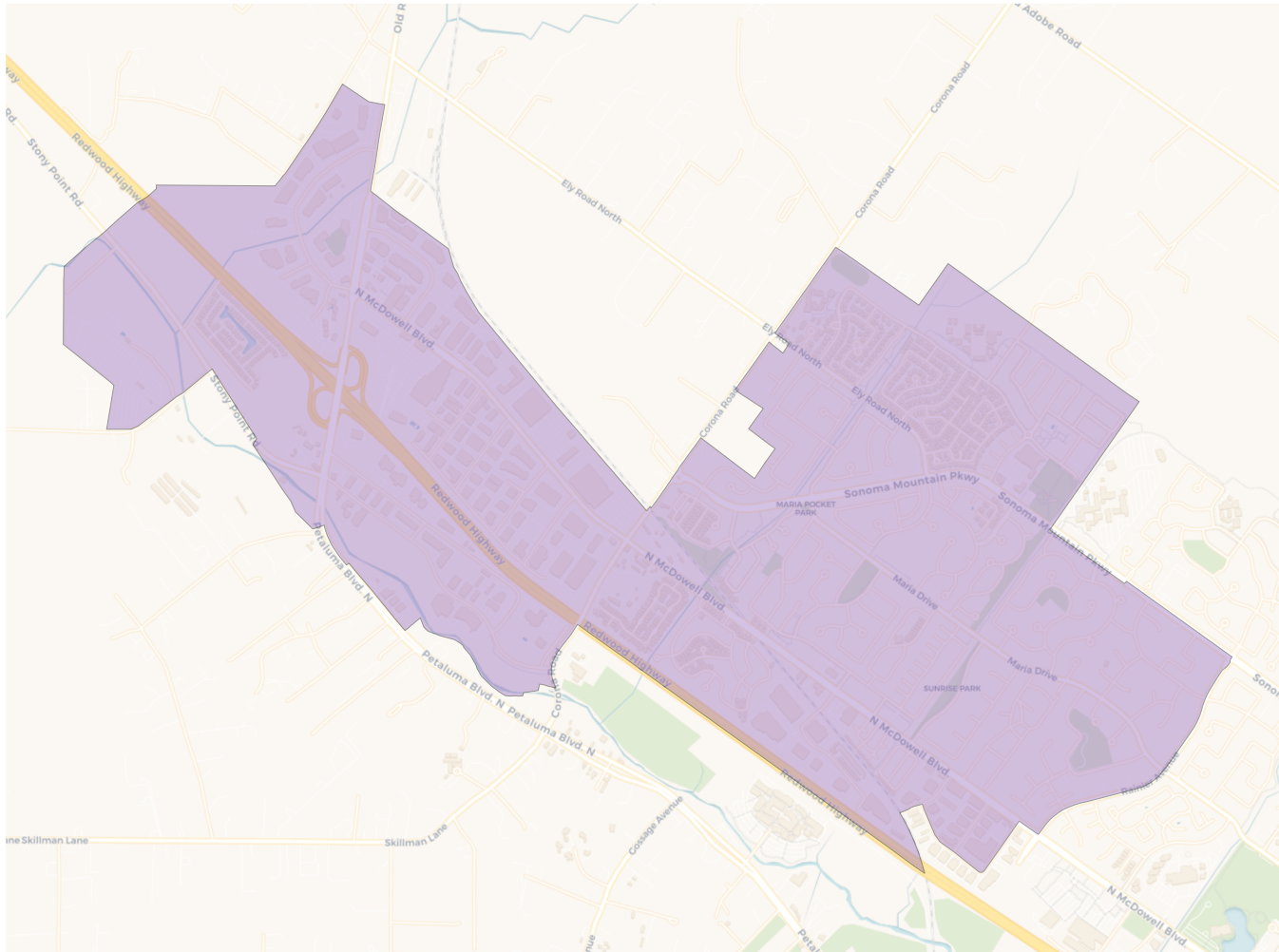


Citizen Voting Age Population

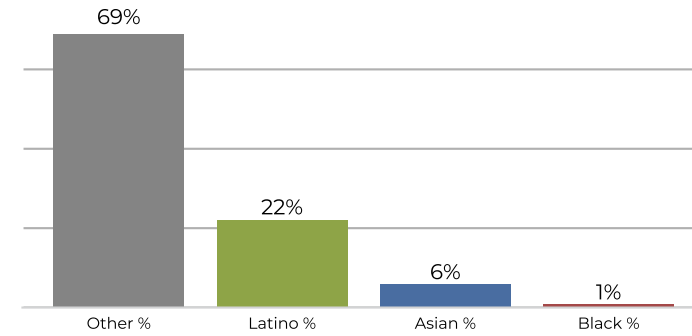


Population	Deviation	Deviation %	Other	Other %	Latino	Latino %	Asian	Asian %	Black	Black %
10,203	229	2.3%	6,858	67.2%	2,645	25.9%	567	5.6%	133	1.3%
Total CVAP	Other CVAP	Other CVAP %	Latino CVAP	Latino CVAP %	Asian CVAP	Asian CVAP %	Black CVAP	Black CVAP %		
7,346	5,882	80.1%	1,085	14.8%	231	3.1%	148	2.0%		

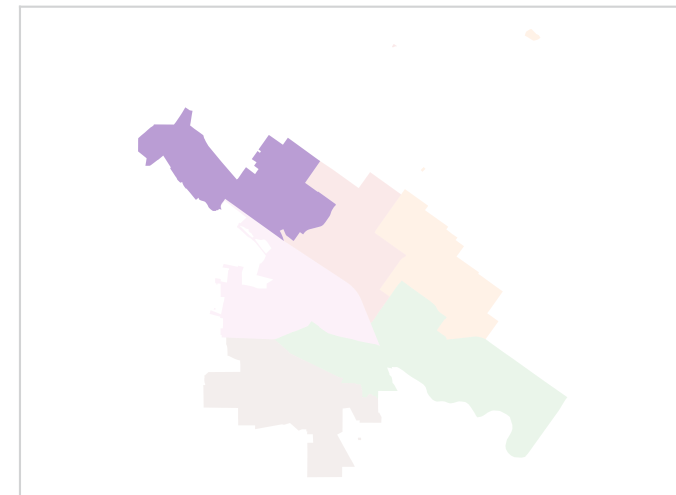
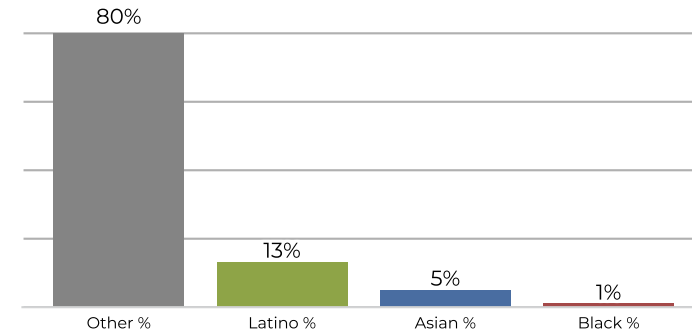
District D



2020 Census

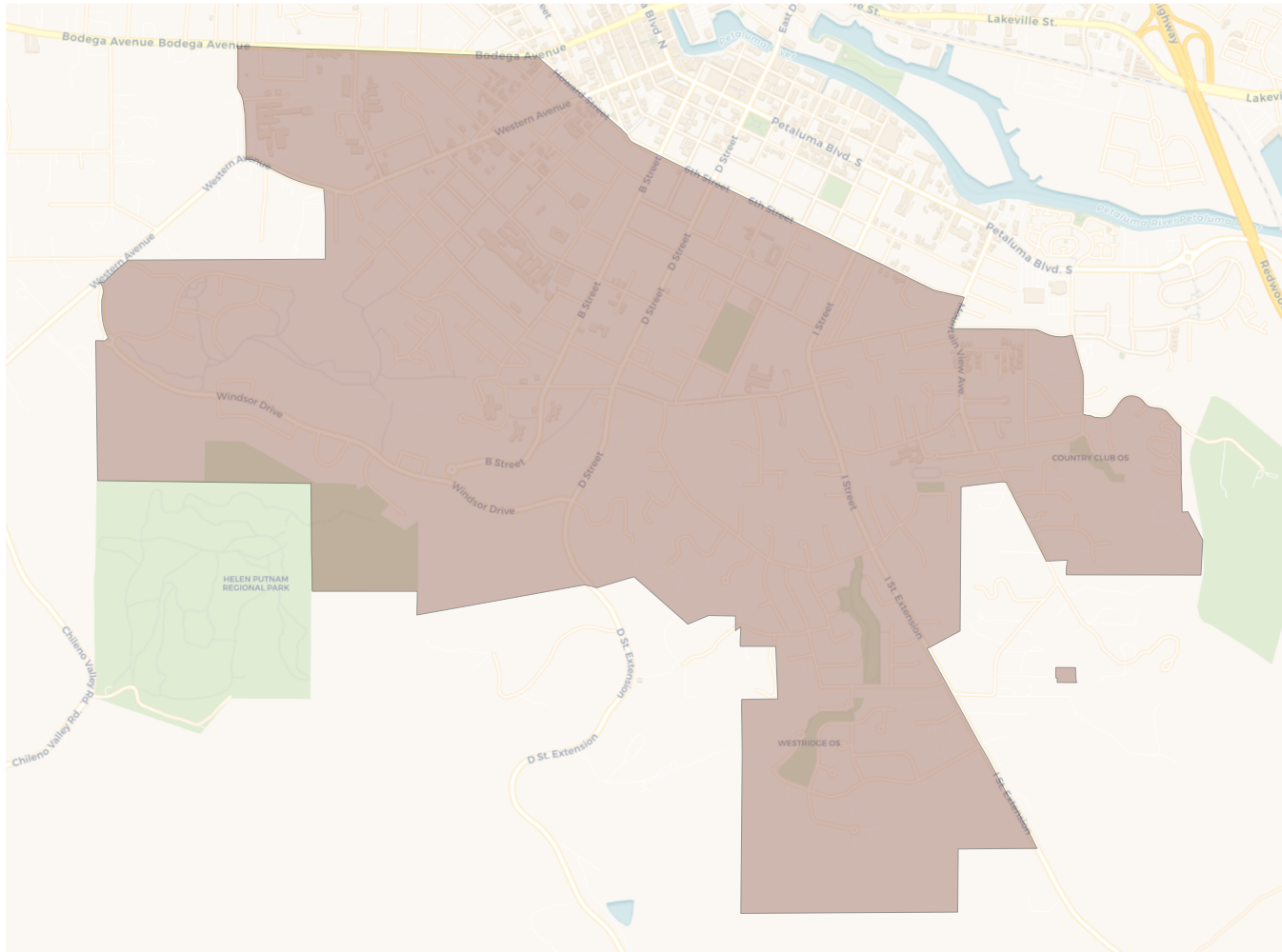


Citizen Voting Age Population

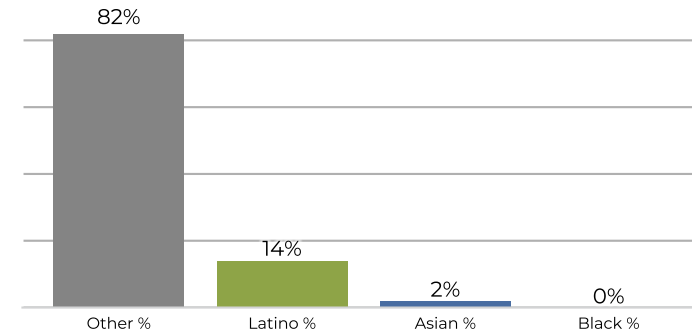


Population	Deviation	Deviation %	Other	Other %	Latino	Latino %	Asian	Asian %	Black	Black %
9,807	-167	-1.7%	6,780	69.1%	2,225	22.7%	675	6.9%	127	1.3%
Total CVAP	Other CVAP	Other CVAP %	Latino CVAP	Latino CVAP %	Asian CVAP	Asian CVAP %	Black CVAP	Black CVAP %		
6,914	5,533	80.0%	900	13.0%	399	5.8%	82	1.2%		

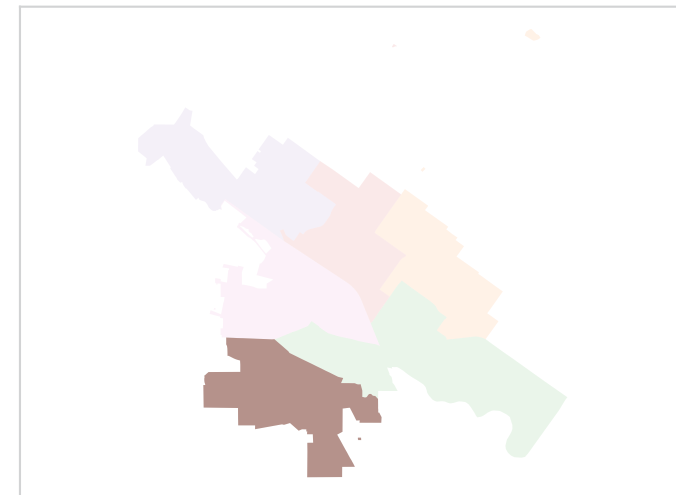
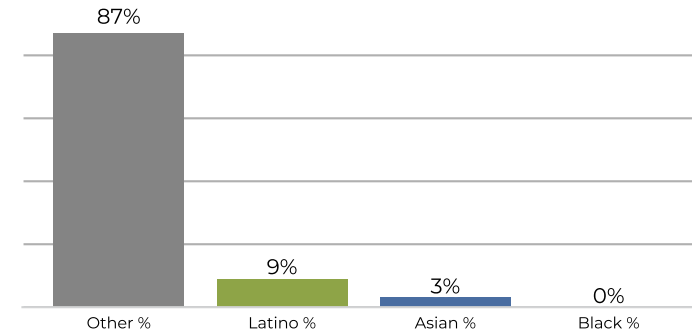
District E



2020 Census

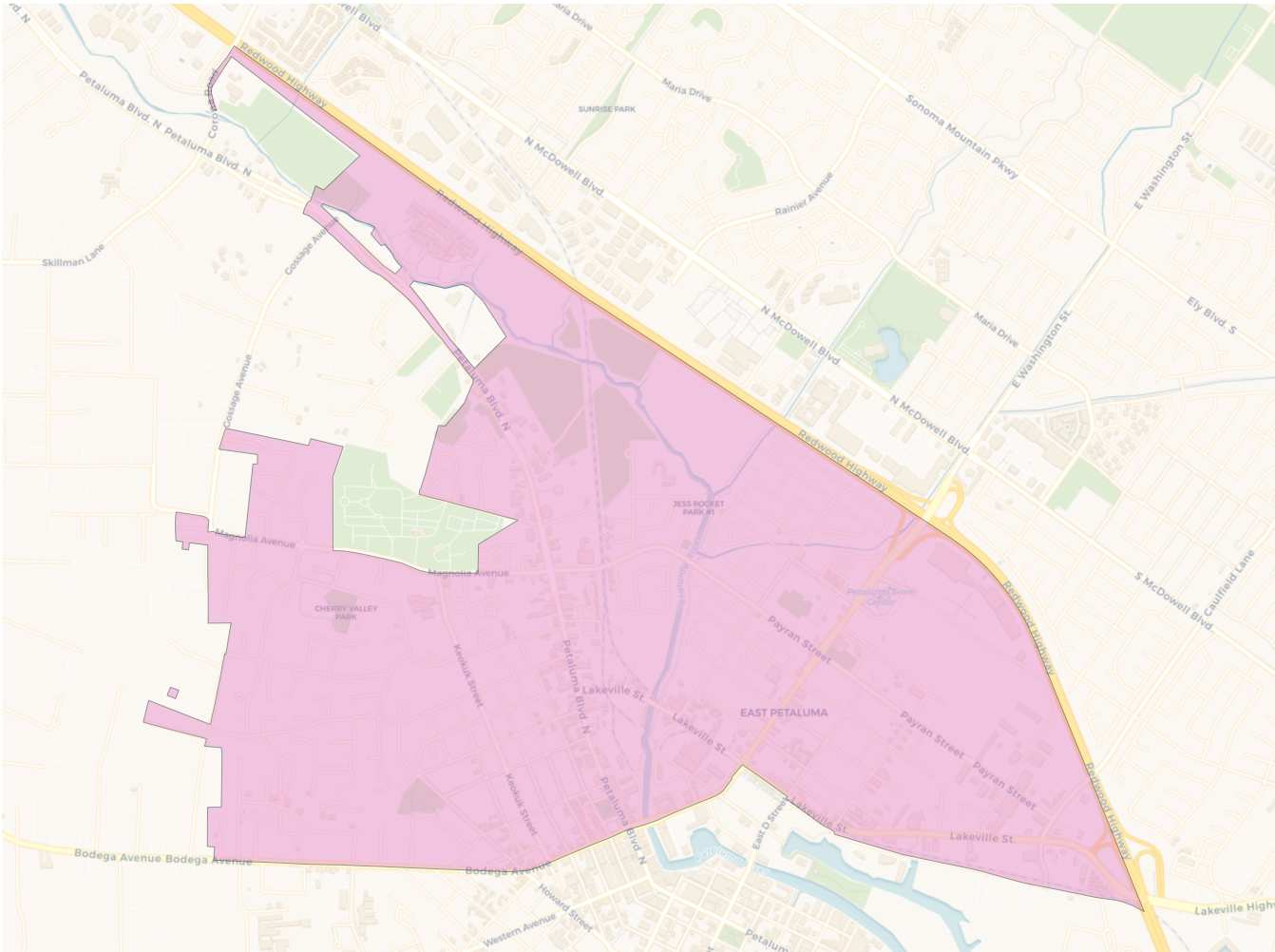


Citizen Voting Age Population

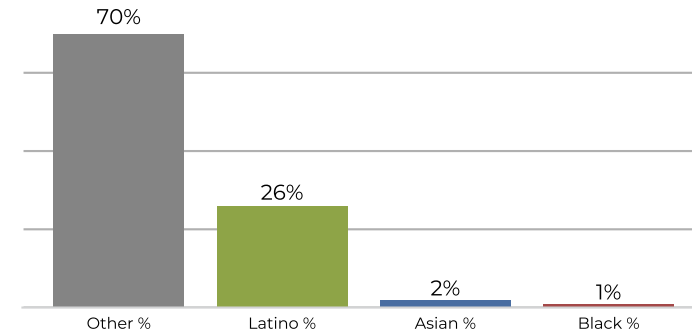


Population	Deviation	Deviation %	Other	Other %	Latino	Latino %	Asian	Asian %	Black	Black %
9,789	-185	-1.9%	8,051	82.2%	1,410	14.4%	253	2.6%	75	0.8%
Total CVAP	Other CVAP	Other CVAP %	Latino CVAP	Latino CVAP %	Asian CVAP	Asian CVAP %	Black CVAP	Black CVAP %		
7,571	6,599	87.2%	721	9.5%	239	3.2%	12	0.2%		

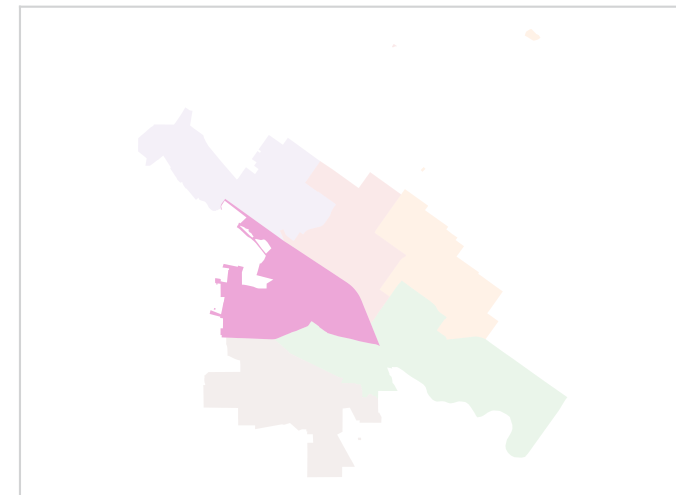
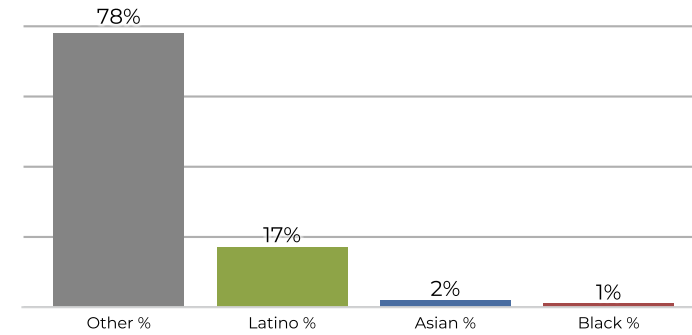
District F



2020 Census



Citizen Voting Age Population



Population	Deviation	Deviation %	Other	Other %	Latino	Latino %	Asian	Asian %	Black	Black %
9,691	-283	-2.8%	6,787	70.0%	2,534	26.1%	252	2.6%	118	1.2%
Total CVAP	Other CVAP	Other CVAP %	Latino CVAP	Latino CVAP %	Asian CVAP	Asian CVAP %	Black CVAP	Black CVAP %		
7,044	5,524	78.4%	1,252	17.8%	165	2.3%	103	1.5%		