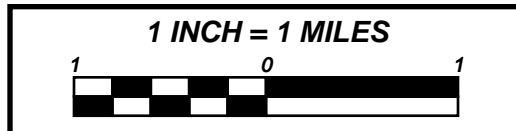
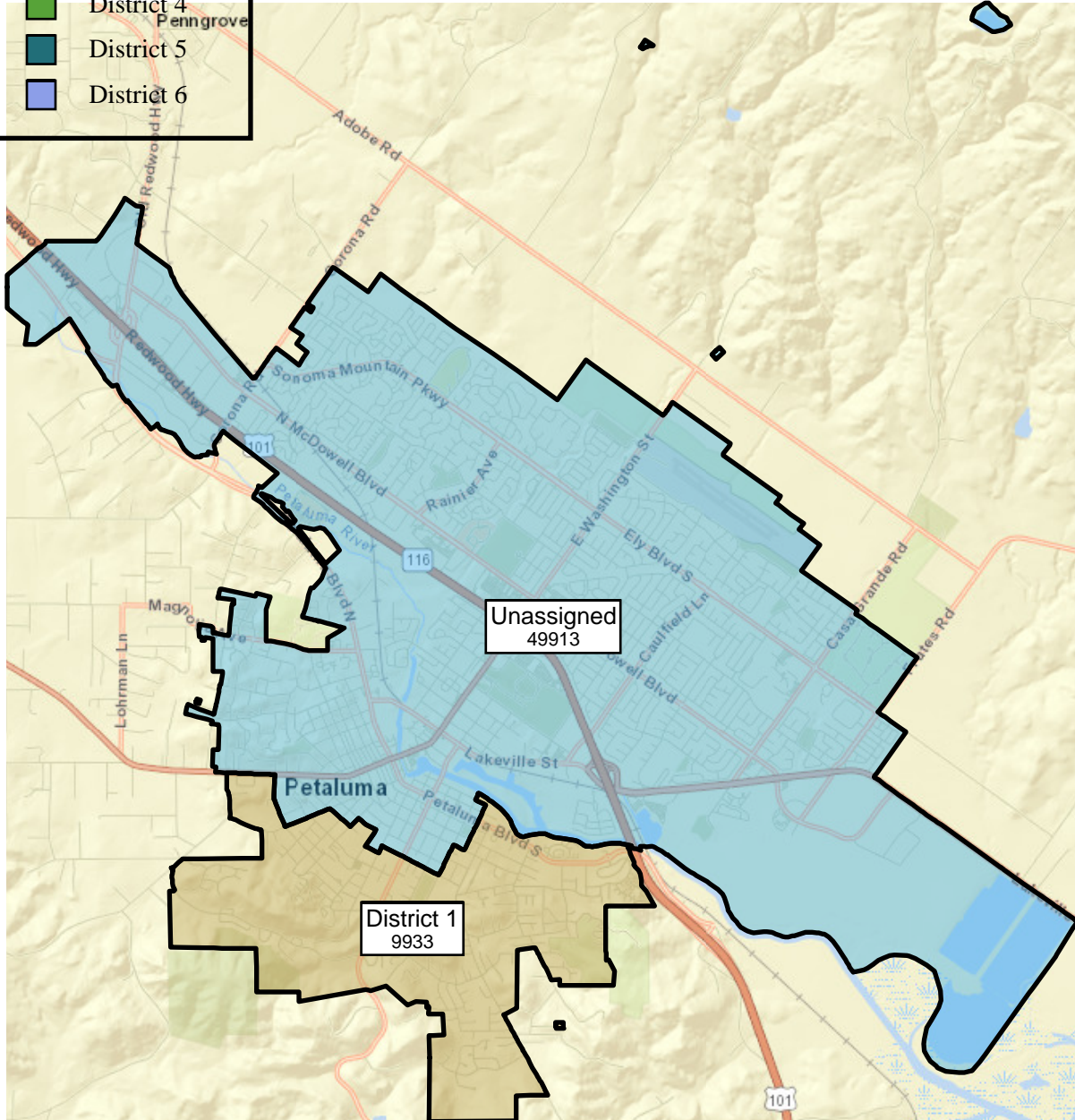


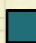

LEGEND

-  District 1
-  District 2
-  District 3
-  District 4
-  District 5
-  District 6

Name: District 1
Owner: irinakramer
Last Modified: 2021-12-15



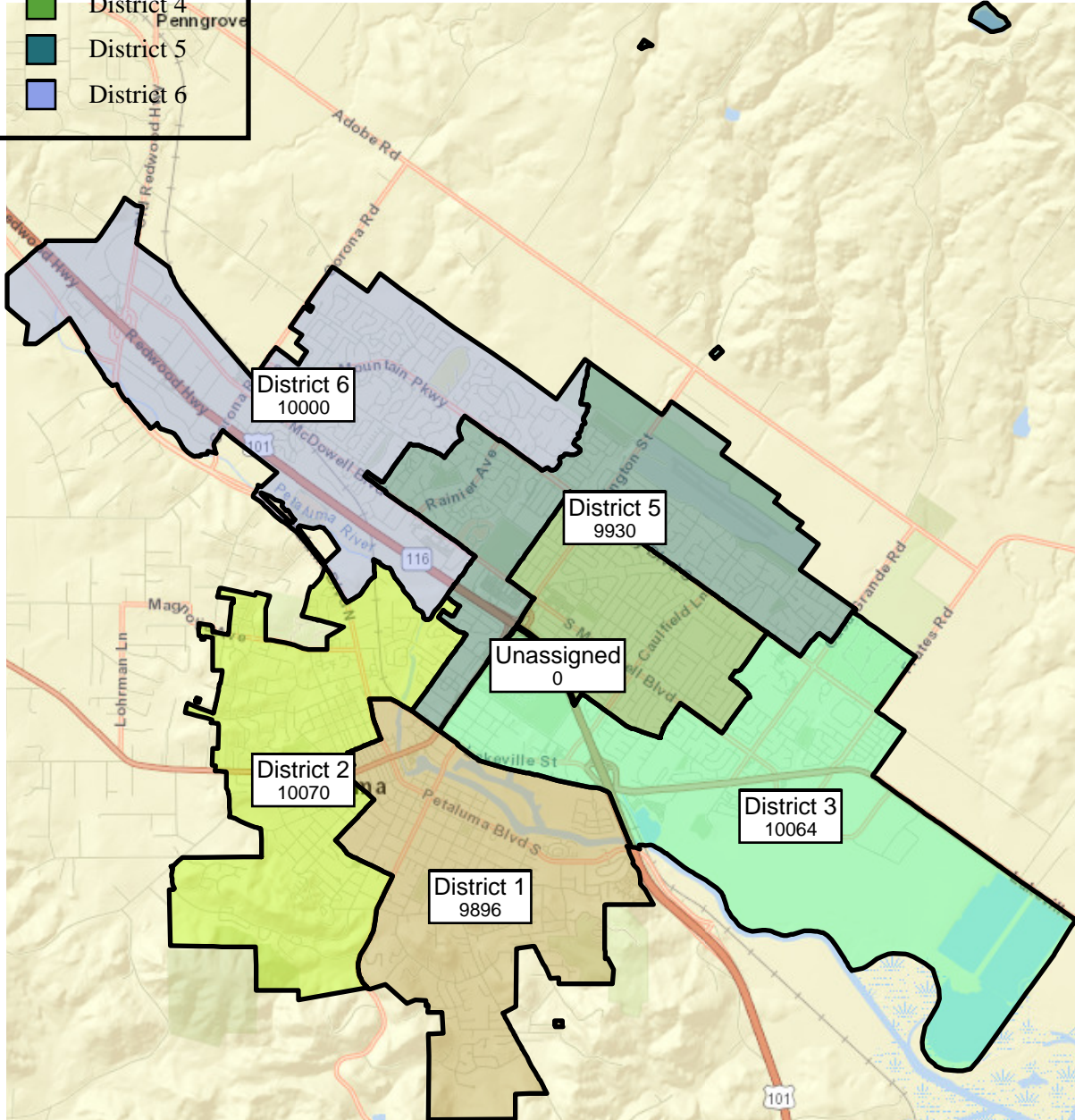
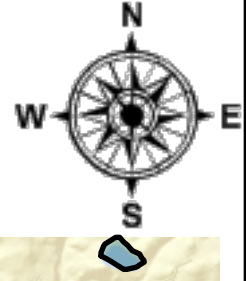
LEGEND

-  District 1
-  District 2
-  District 3
-  District 4
-  District 5
-  District 6

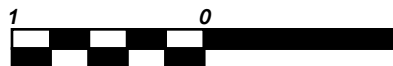
Name: Kevin-B-15Dec

Owner: bjorke

Date Created: 2021-12-15



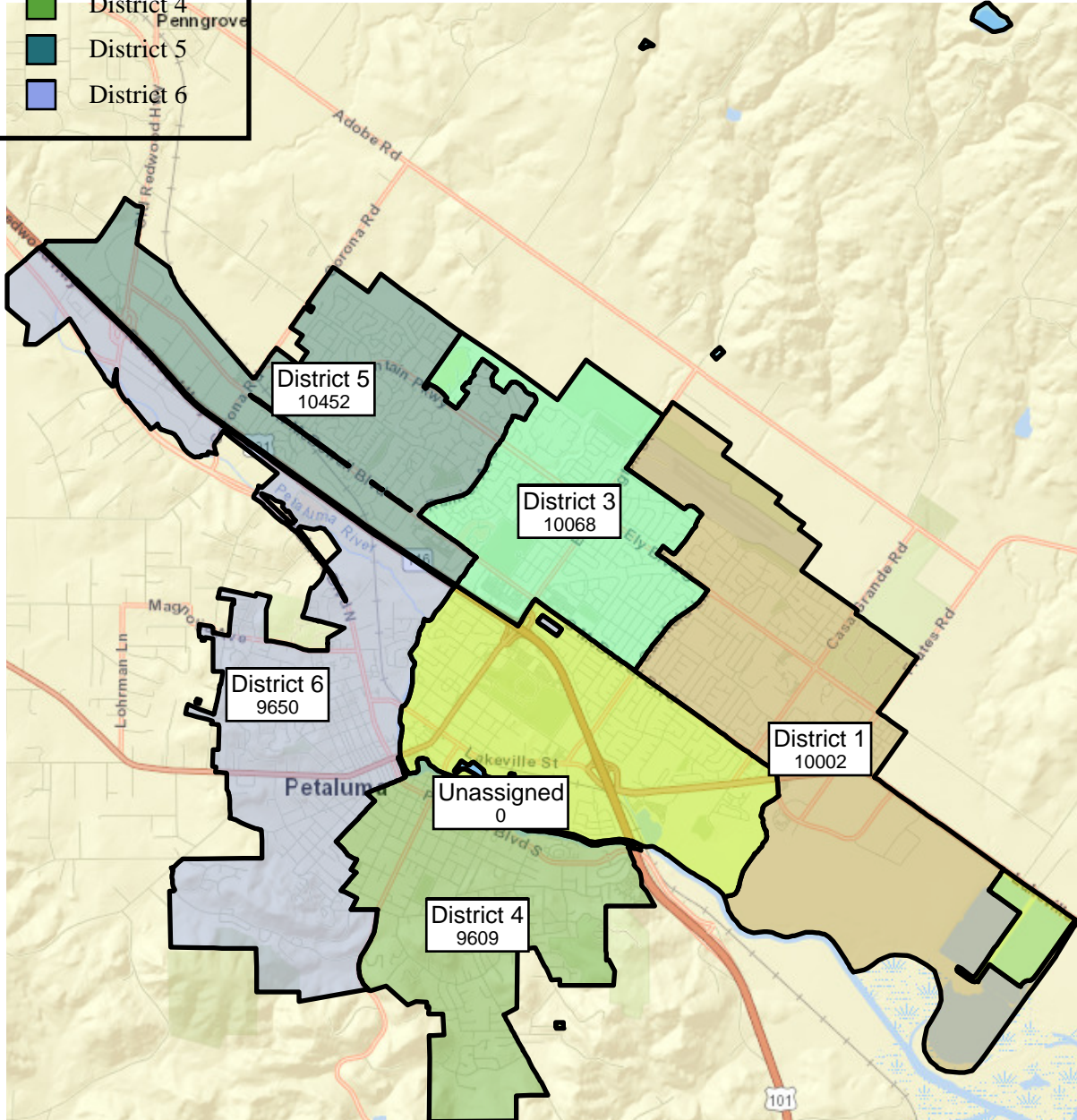
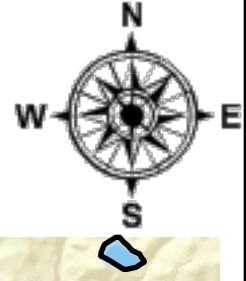
1 INCH = 1 MILES



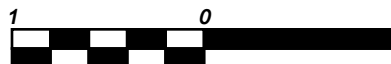
LEGEND

- District 1
- District 2
- District 3
- District 4
- District 5
- District 6

Name: gsillianplan2
Owner: gsillian
Date Created: 2021-12-16



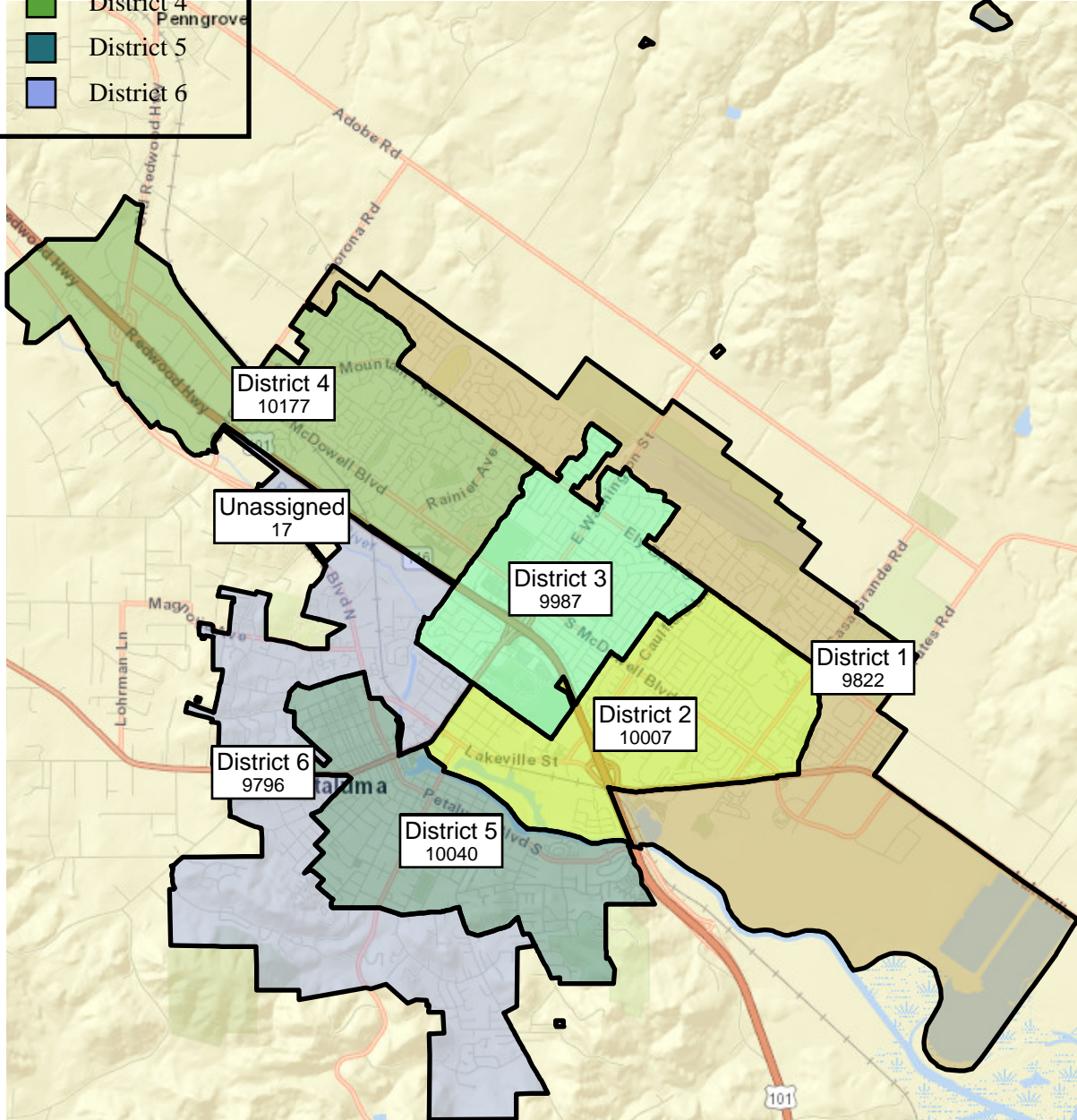
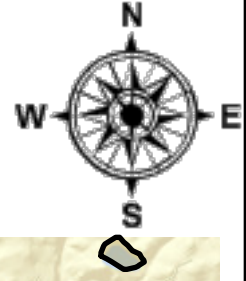
1 INCH = 1 MILES



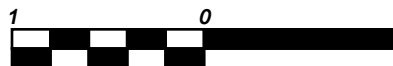
LEGEND

- District 1
- District 2
- District 3
- District 4
- District 5
- District 6


Name: Kevin B - 16 Dec - Historic
Owner: bjarke
Date Created: 2021-12-16



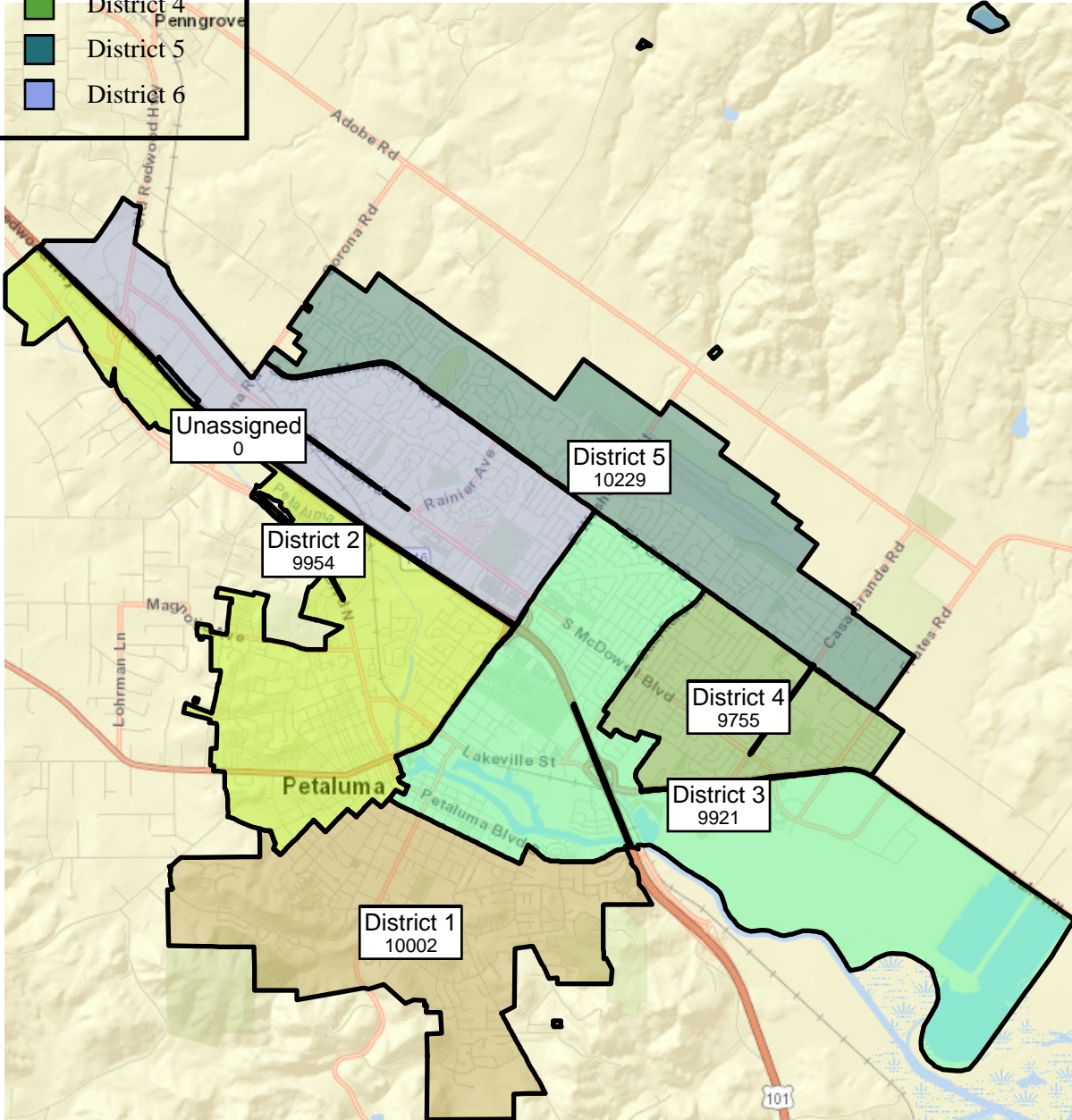
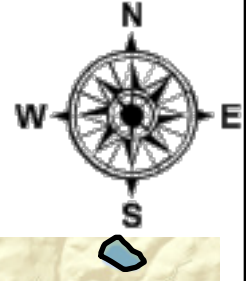
1 INCH = 1 MILES



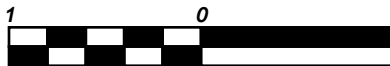
LEGEND

-  District 1
-  District 2
-  District 3
-  District 4
-  District 5
-  District 6

Name: Gayle1
Owner: Gsishere
Date Created: 2021-12-19



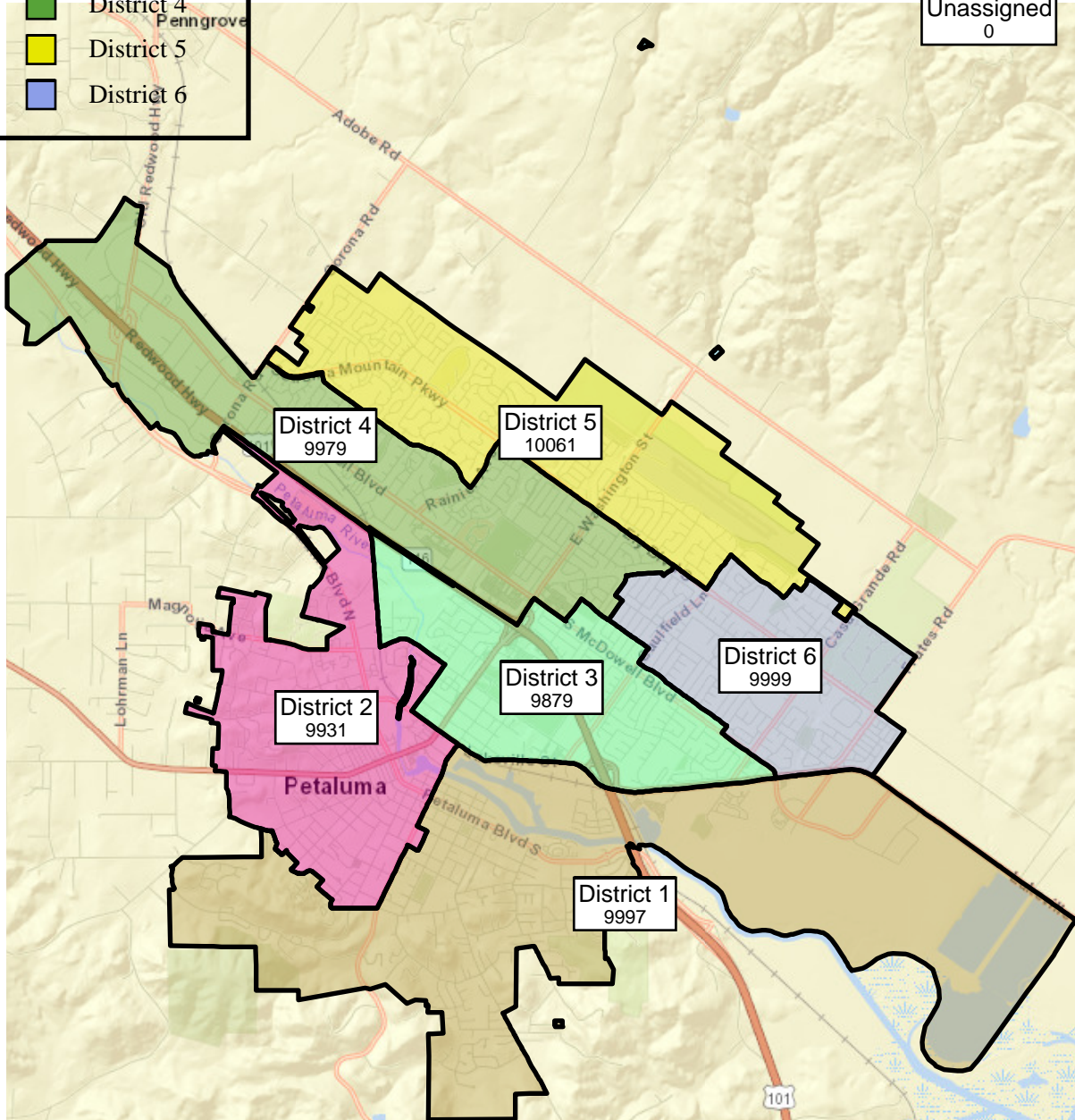
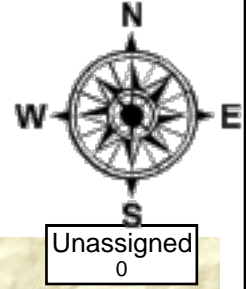
1 INCH = 1 MILES




LEGEND

- District 1
- District 2
- District 3
- District 4
- District 5
- District 6

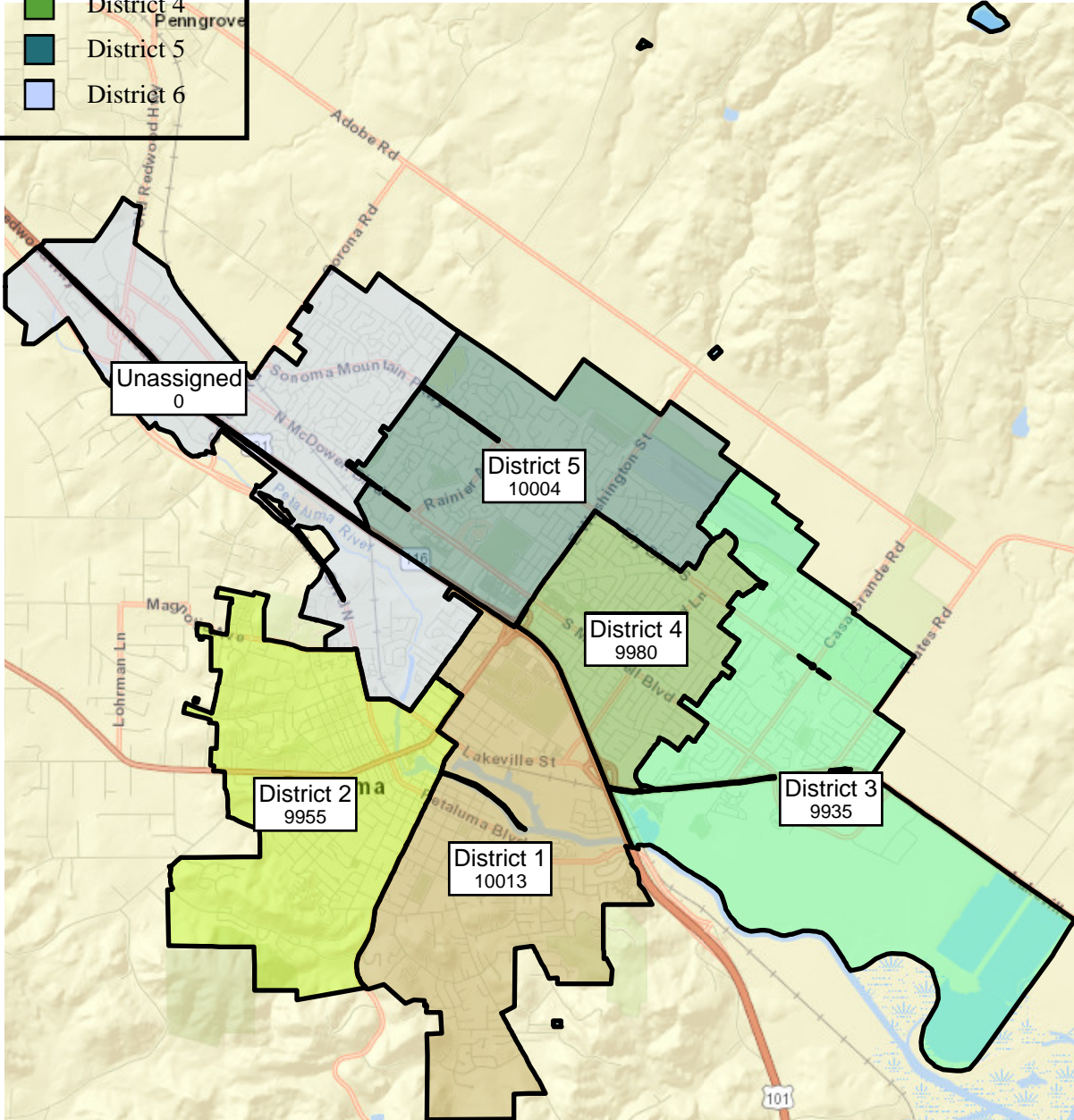
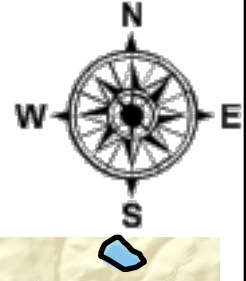
Name: Duste122121v1
Owner: RickDuste
Date Created: 2021-12-21



LEGEND

-  District 1
-  District 2
-  District 3
-  District 4
-  District 5
-  District 6

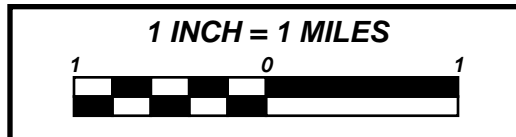
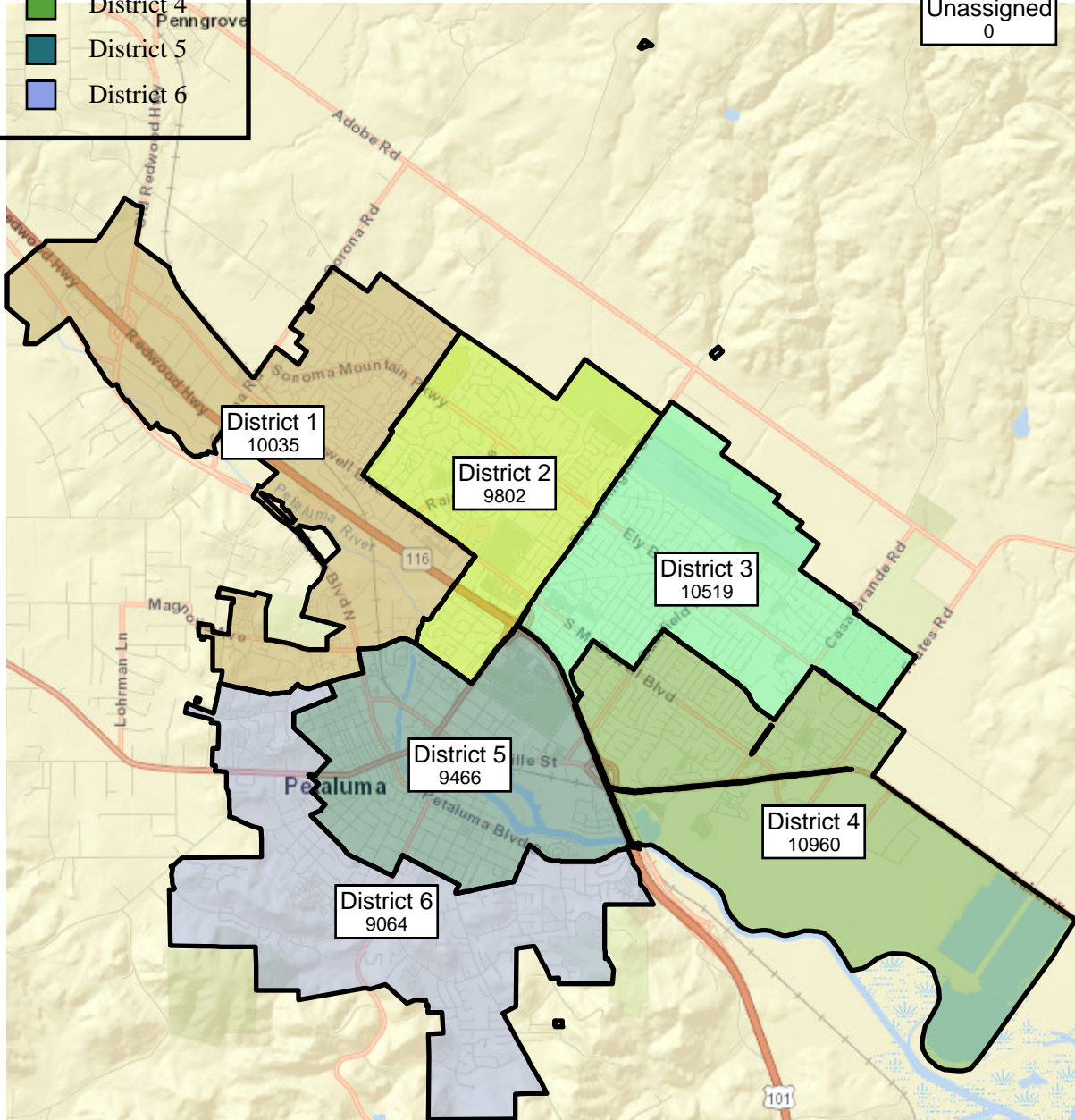
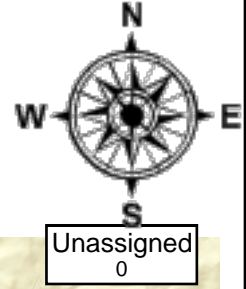
Name: nh 1
Owner: nhalberg
Date Created: 2021-12-21




LEGEND

- District 1
- District 2
- District 3
- District 4
- District 5
- District 6

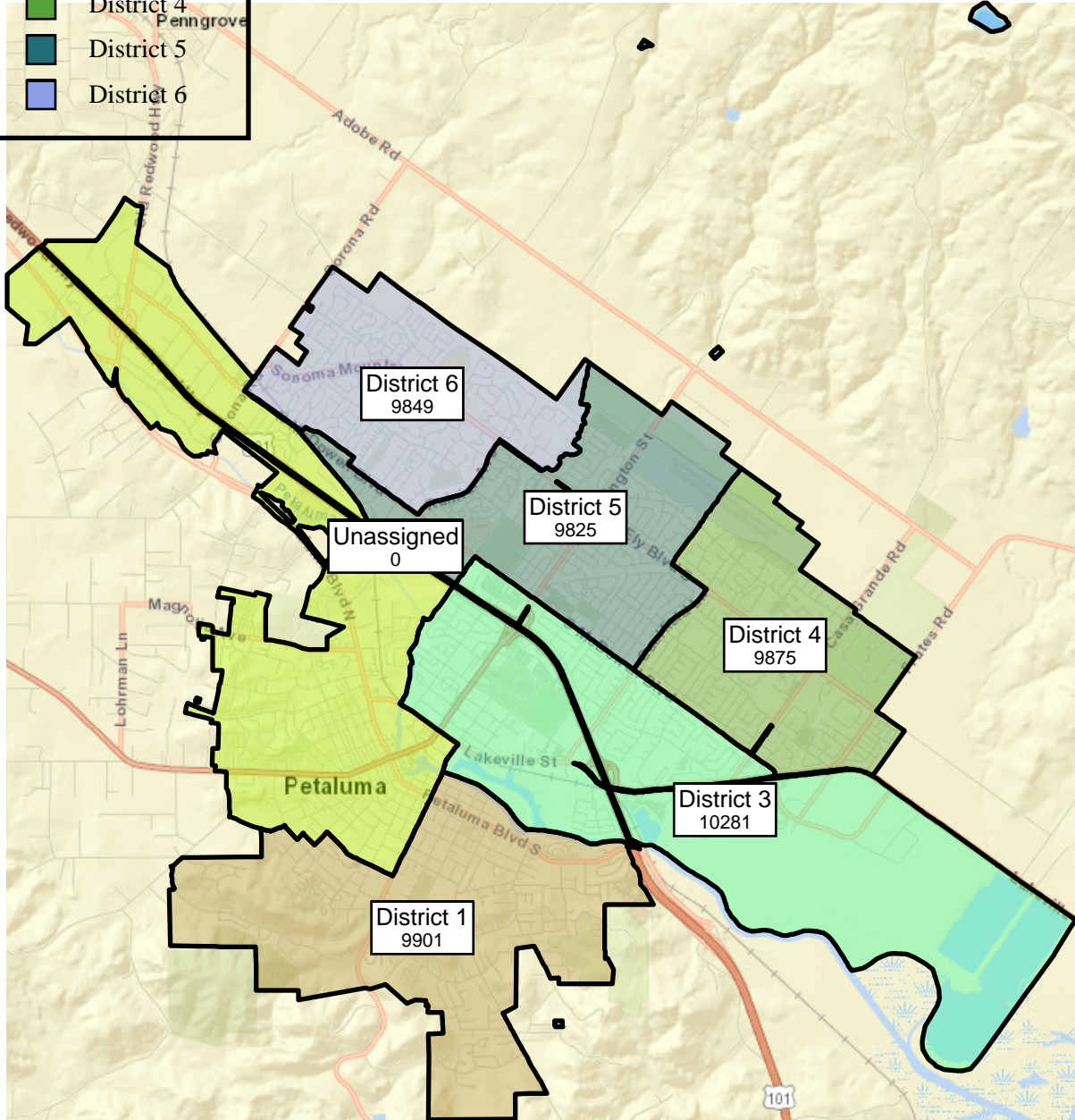
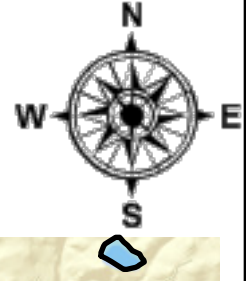
Name: Petaluma districting
Owner: msmcroll
Date Created: 2021-12-22



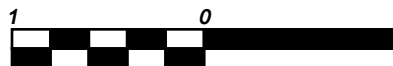
LEGEND

-  District 1
-  District 2
-  District 3
-  District 4
-  District 5
-  District 6

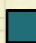

Name: Districting Plan
Owner: emmalogan
Created: 2021-12-23



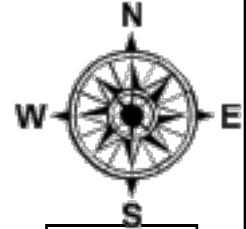
1 INCH = 1 MILES



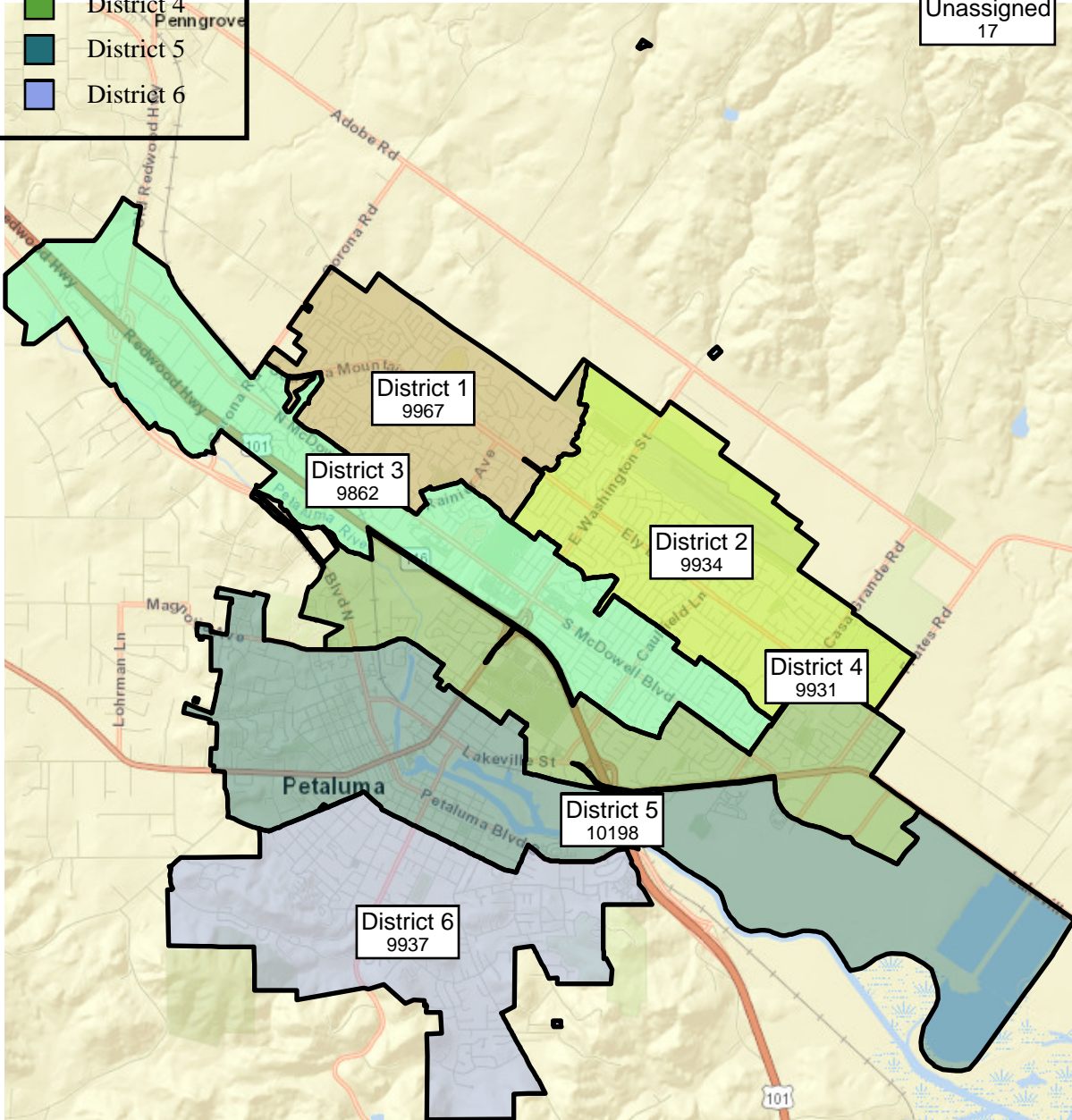
LEGEND

-  District 1
-  District 2
-  District 3
-  District 4
-  District 5
-  District 6

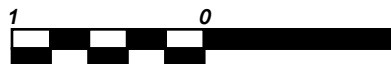
Name: Redistricting_Rangy
Owner: rangy2022
Date Created: 2021-12-27




Unassigned
17



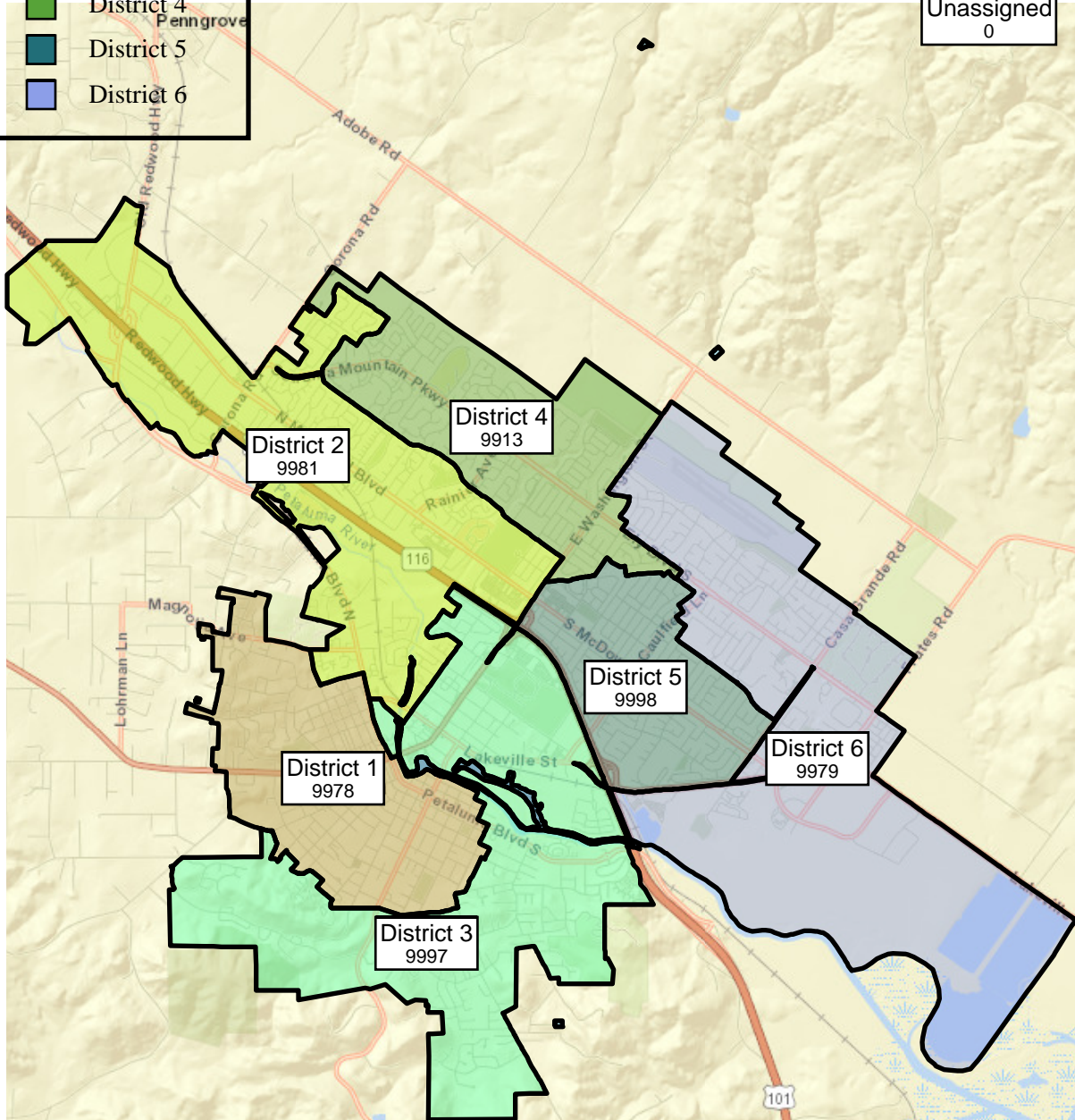
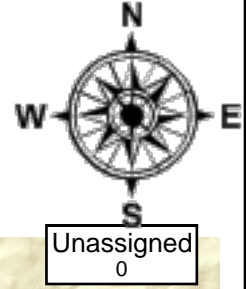
1 INCH = 1 MILES



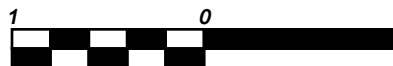
LEGEND

-  District 1
-  District 2
-  District 3
-  District 4
-  District 5
-  District 6

Name: RoyRedlich2
Owner: Roy Redlich
Date Created: 2022-01-02



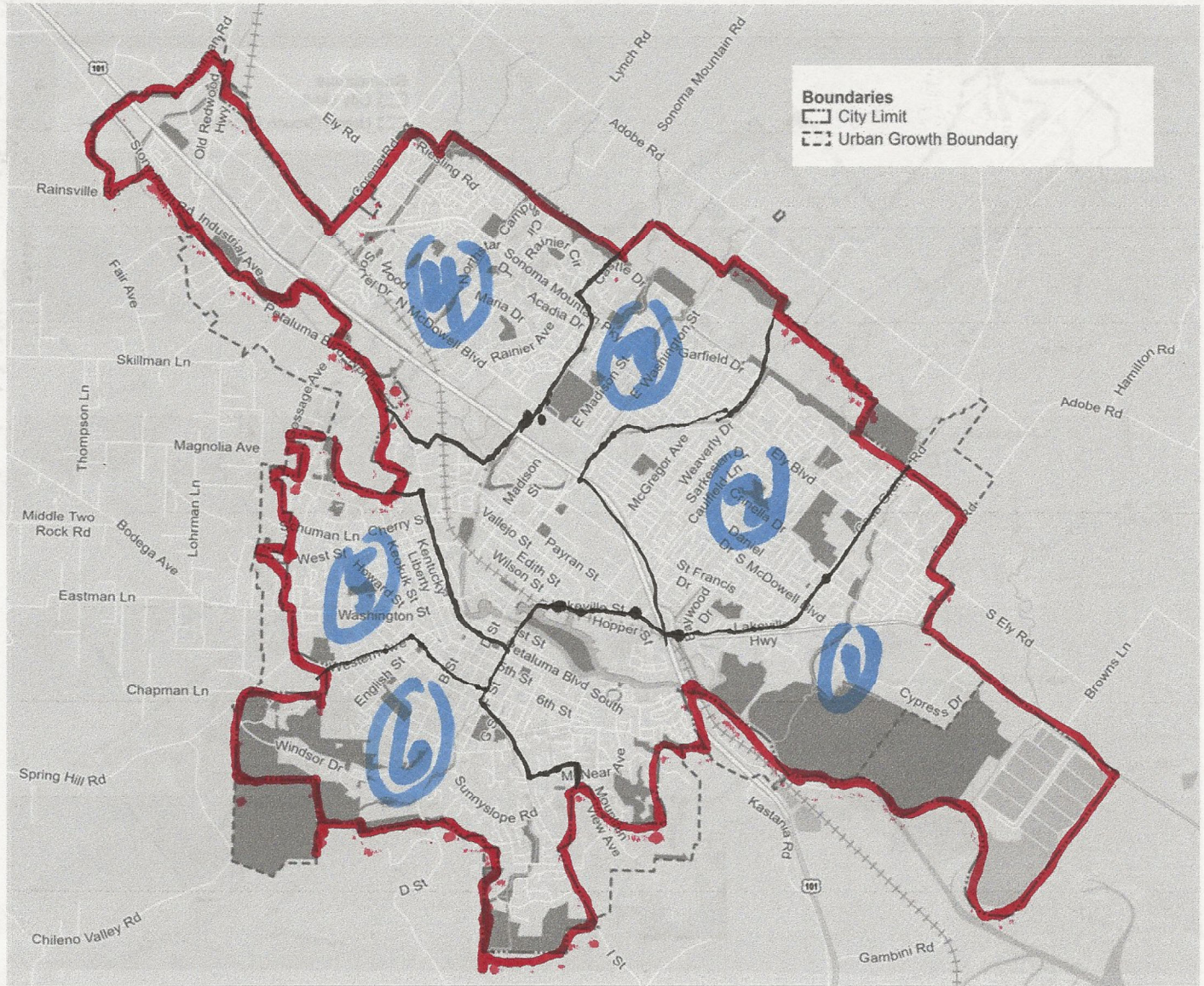
1 INCH = 1 MILES





Name_Mapz1
 Owner_Jerry Rosenthal
 Date_1-9-22

SHAPE YOUR DISTRICT. SHAPE YOUR COUNCIL.



Petaluma is in the process of transitioning to a district elections model that will have 6 districts of nearly equal population. Each district will elect one councilmember who resides in the district to represent them on City Council.

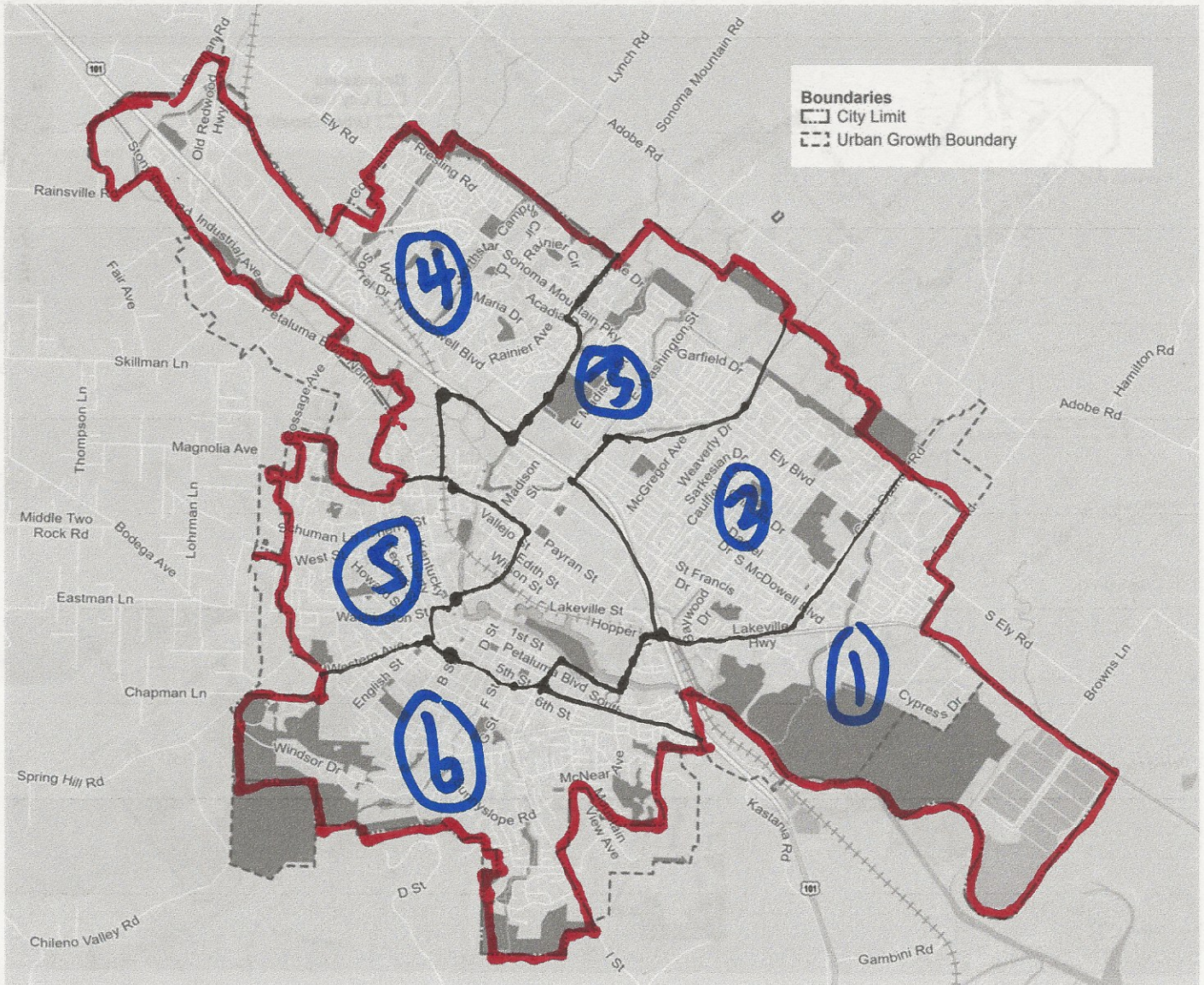
STEP 1: Please mark up this map to show us where you would like the district lines to be. Please make sure you create 6 districts of nearly equal population. Petaluma's population is 59,846 which means each district should have approximately 9,974 people.

STEP 2: Return it by email to districtelections@cityofpetaluma.org or drop off/mail a hard copy to the Office of the City Clerk at 11 English Street, Petaluma, CA 94952.



Name_Mapz2
Owner_Jerry Rosenthal
Date_1-9-22

SHAPE YOUR DISTRICT. SHAPE YOUR COUNCIL.


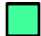





Petaluma is in the process of transitioning to a district elections model that will have 6 districts of nearly equal population. Each district will elect one councilmember who resides in the district to represent them on City Council.

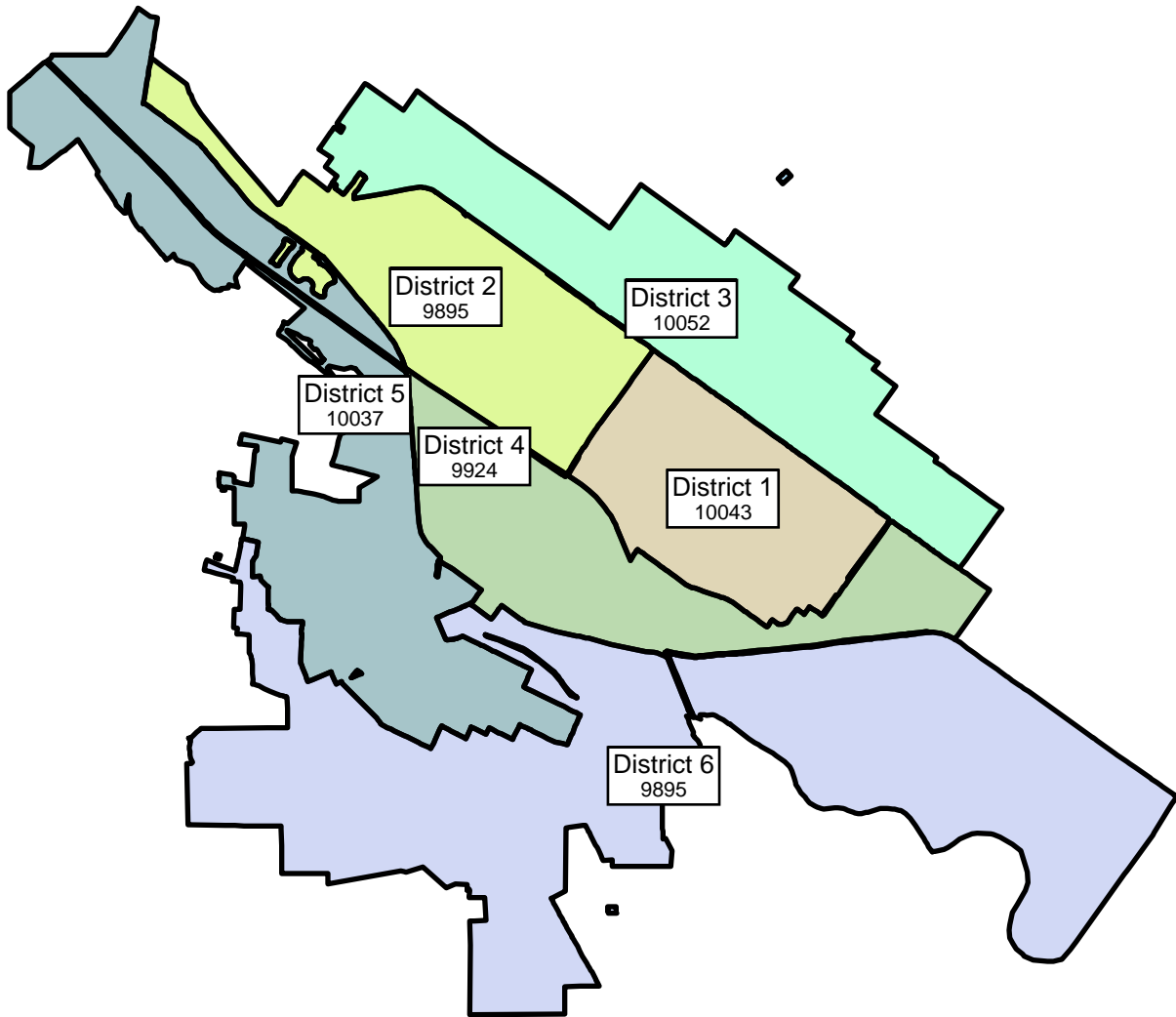
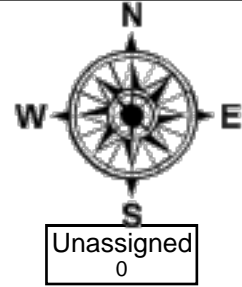
STEP 1: Please mark up this map to show us where you would like the district lines to be. Please make sure you create 6 districts of nearly equal population. Petaluma's population is 59,846 which means each district should have approximately 9,974 people.

STEP 2: Return it by email to districtelections@cityofpetaluma.org or drop off/mail a hard copy to the Office of the City Clerk at 11 English Street, Petaluma, CA 94952.

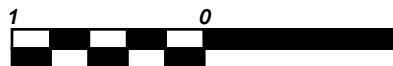
LEGEND

-  District 1
-  District 2
-  District 3
-  District 4
-  District 5
-  District 6



User: Lina Hoshino
Name: East Side Resident
Date: 01.10.22



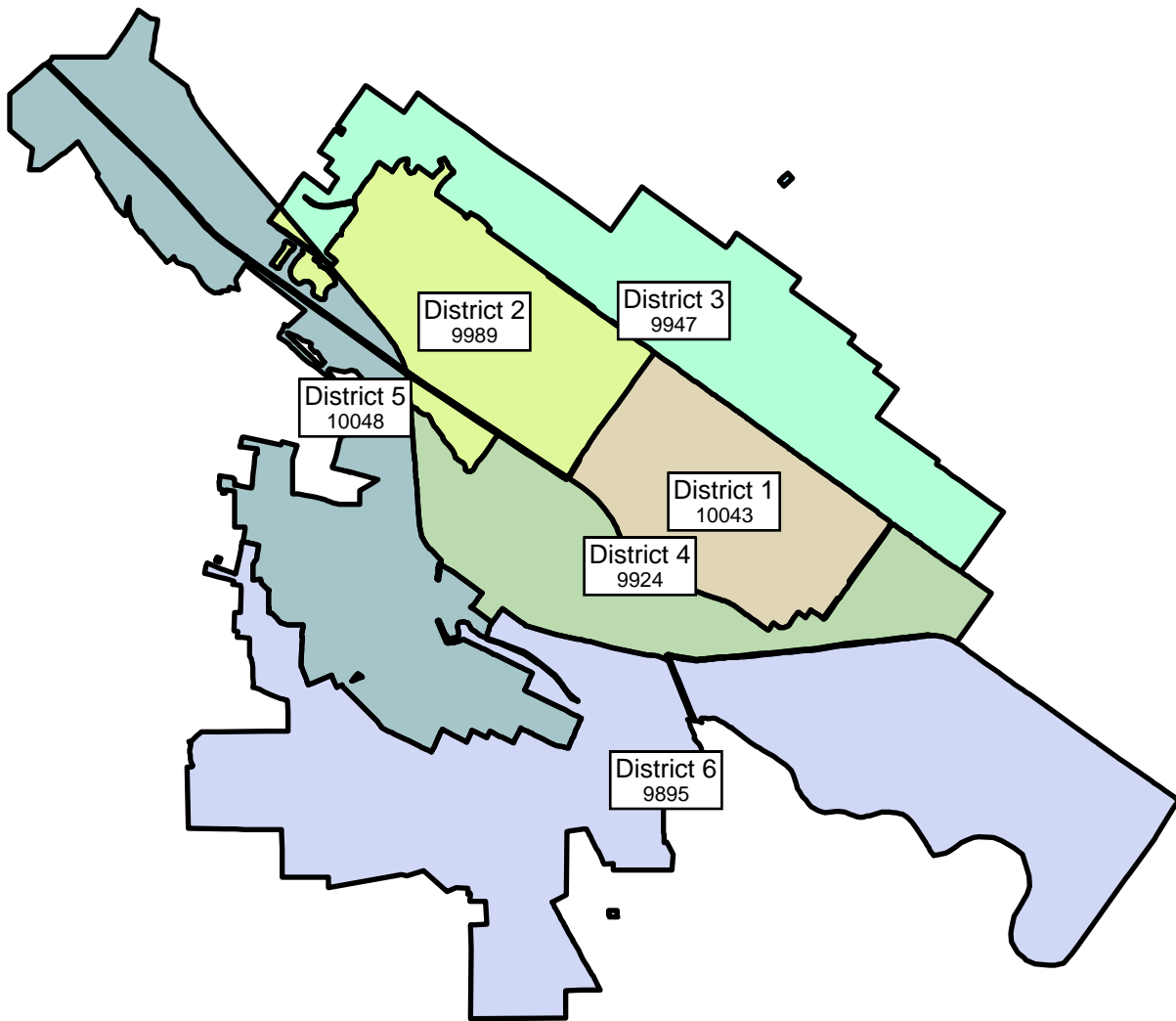
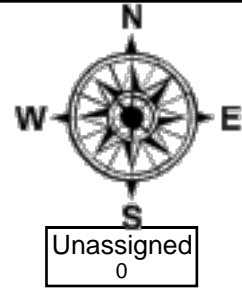
1 INCH = 1 MILES



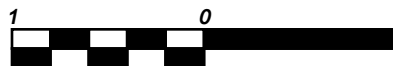
LEGEND

-  District 1
-  District 2
-  District 3
-  District 4
-  District 5
-  District 6

User: okilker
Name: East Petaluma Alliance
Date: 01.11.22



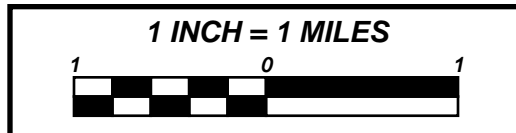
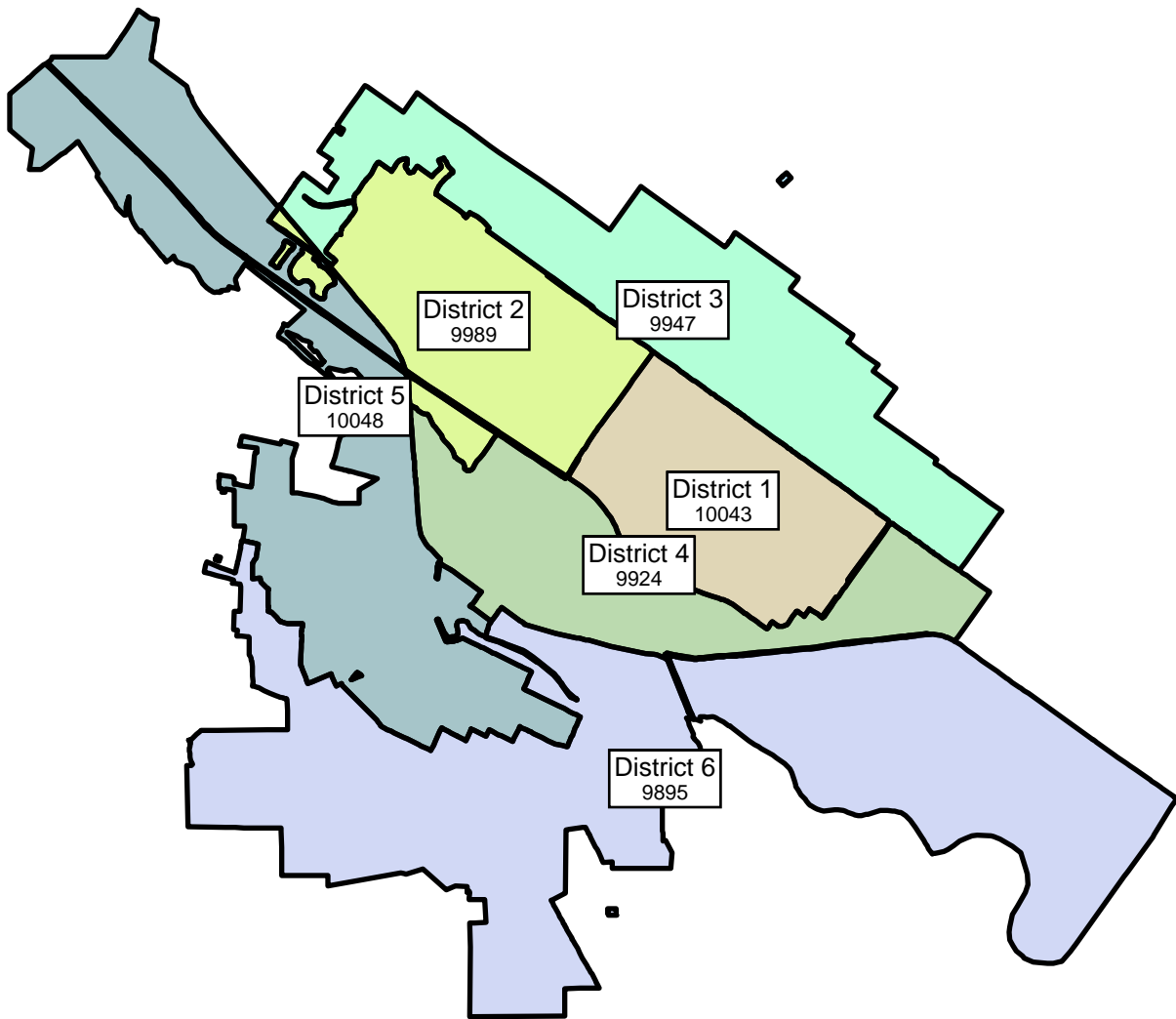
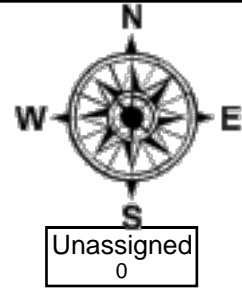
1 INCH = 1 MILES



LEGEND

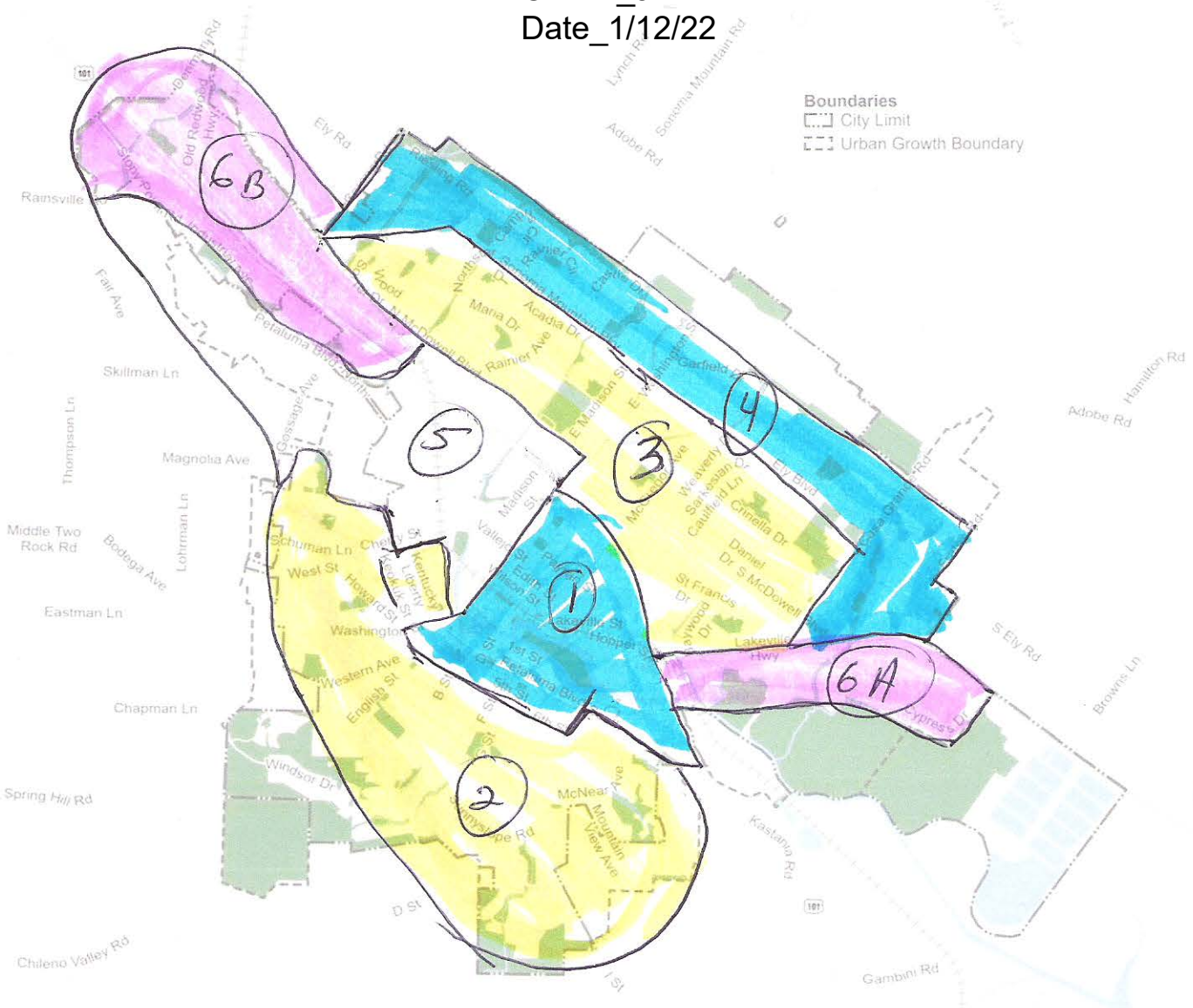
- District 1
- District 2
- District 3
- District 4
- District 5
- District 6

Name: East Side
User: okilker
Date: 01.11.22





Owner_John Shribbs
Date_1/12/22



Petaluma is in the process of transitioning to a district elections model that will have 6 districts of nearly equal population. Each district will elect one councilmember who resides in the district to represent them on City Council.

STEP 1: Please mark up this map to show us where you would like the district lines to be. Please make sure you create 6 districts of nearly equal population. Petaluma's population is 59,846 which means each district should have approximately 9,974 people.

STEP 2: Return it by email to districtelections@cityofpetaluma.org or drop off/mail a hard copy to the Office of the City Clerk at 11 English Street, Petaluma, CA 94952.

- ① Downtown + Fairgrounds + Target Ctr.
- ② West side (upper income)
- ③ Older track homes * on Eastside
- ④ Newer upscale Eastside
- ⑤ Midtown + NE FWY + Pet. Blvd N
- ⑥ Business Park + Maker Space

Comments to Map

1/12/22

John Shribbs

Greetings,

I created 6 districts on map. See attached and below.

Districts based on economics and themes/character.

- 1) downtown + Fairgrounds + Target Ctr + new multiuse area by river/fwy (city core area)
- 2) West side, mostly up scale homes starting outside of downtown proper (newer, richer arrivals with larger homes)
- 3) older tract suburban homes on east side (1970-1985) (underserved)
- 4) new tract suburban homes on east side (1985-present) (up scale homes)
- 5) Midtown, Outlet Mall flood zone, west side of N. Pet. Blvd (older sections with underserved community)
- 6) Business Parks 6A and Maker Space 6 B (asking for light industrial business owner to be represented)

Possible to shift some lines to equalize populations in each area, e.g. Midtown area could pick up section of Oakhill/Brewster and/or residential area around Edith. The idea is to secure representation from each zone based on its character in race, age, economics, functions, and services. Businesses along Washington and Petaluma Blvd. could be included in Downtown zone to represent the economic services of all those smaller street side retail businesses and downtown business association members.

Businesses get 2 reps (retail/streetside + light industrial)

Upscale home owners get 2 reps (East and West sides equal populations)

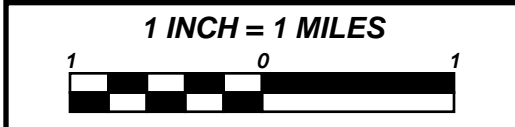
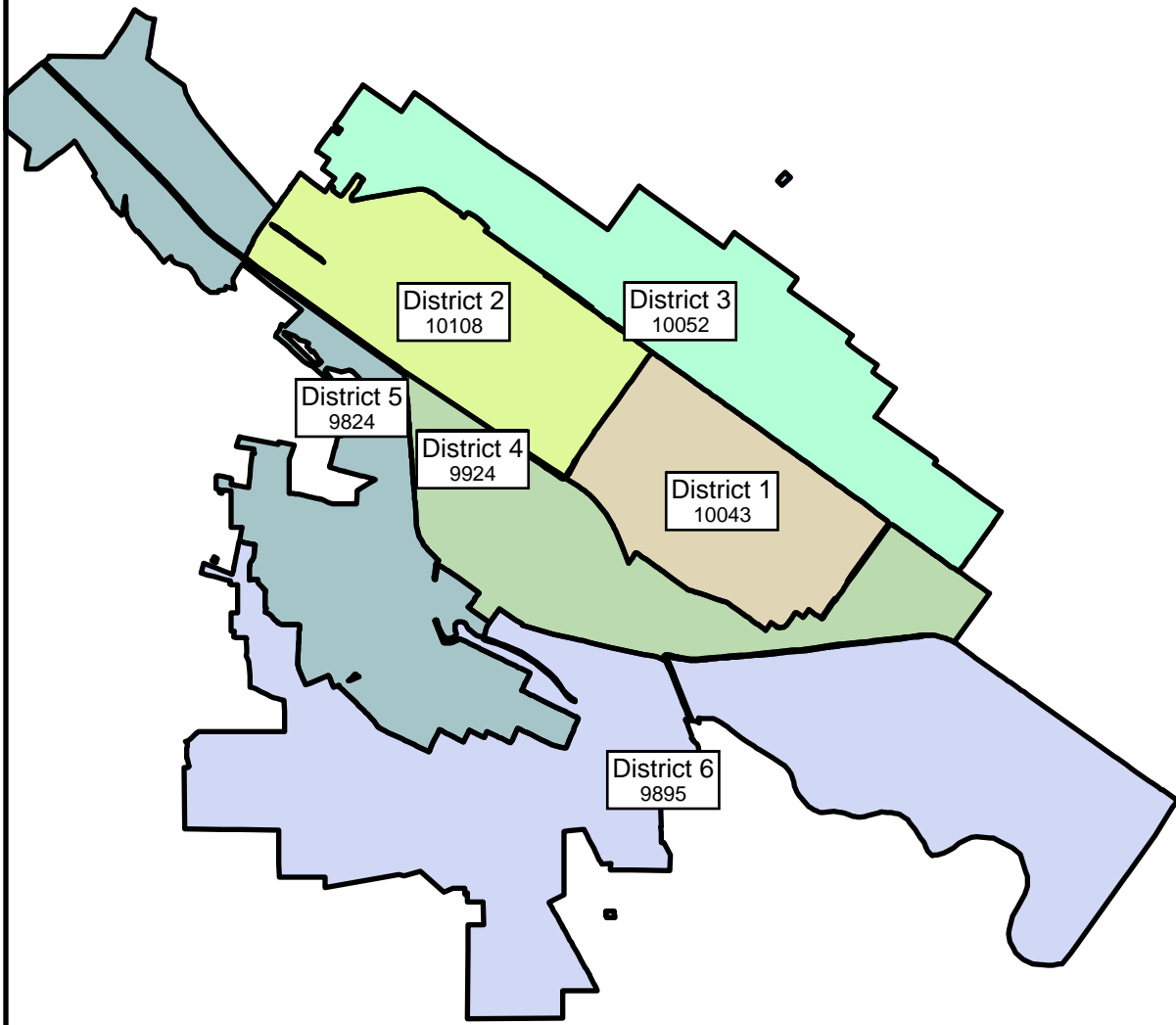
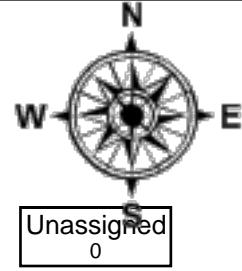
Underserved Communities get 2 reps.(Midtown area and near Fwy. N and S)

John Shribbs

LEGEND

-  District 1
-  District 2
-  District 3
-  District 4
-  District 5
-  District 6

Name: Angelo Plan
User: angelo9000
Date: 01.12.22





CITY OF PETALUMA DISTRICT MAPPING TOOL

Petaluma is transitioning to a district elections model that will have six districts of nearly equal population. Each district will elect one councilmember who resides in the district to represent them on City Council. This map shows the City's census blocks, following major roads, including a rounded population calculation based on the final census data adjusted by the State of California.

INSTRUCTIONS:

1. Please mark up this map to either create a single city council district or create a full six district plan with each having nearly equal population.
2. Petaluma's population is 59,846 which means each district should be around 10,000 people.
3. The largest district should be no more than -1,000 people greater than the smallest district.

SUBMIT YOUR MAP (Three options)

1. Email to districtelections@cityofpetaluma.org
2. Mail a hard copy to the Office of the City Clerk at 11 English Street, Petaluma, CA 94952
3. Place in the green drop boxes (typically used for payments) located in the parking lots of the Petaluma Community Center and City Hall

WRITE IN THE POPULATION ESTIMATES FOR EACH OF YOUR DRAWN DISTRICTS.

-10,000 Target Population Per District

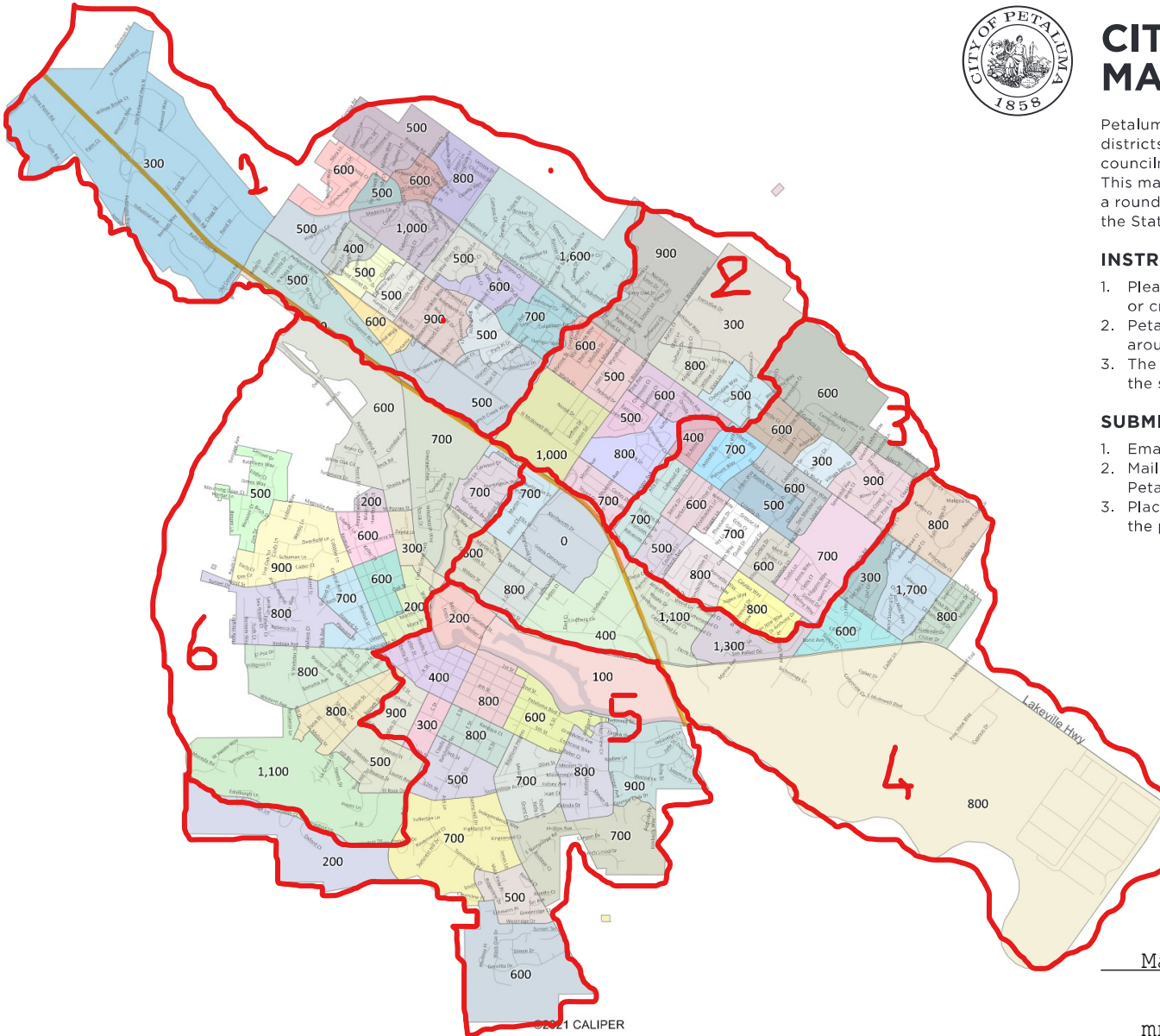
<u>10,000</u>	<u>9,800</u>
DISTRICT 1	DISTRICT 2
<u>10,000</u>	<u>9,900</u>
DISTRICT 3	DISTRICT 4
<u>9,700</u>	<u>10,000</u>
DISTRICT 5	DISTRICT 6

Marie-Noelle Le Pennec-Cash

NAME

mn.lepennec@yahoo.com

EMAIL OR PHONE





Petaluma is in the process of transitioning to a district elections model that will have 6 districts of nearly equal population. Each district will elect one Councilmember who resides in the district to represent them on the City Council.

Does your neighborhood have shared concerns? Is there a park, school, major road, or intersection that would define your district?

STEP 1: Please mark up this map to show us where your community of interest is located.

STEP 2: Return it by email to districtelections@cityofpetaluma.org or drop off/mail a hard copy to the Office of the City Clerk at 11 English Street, Petaluma, CA 94952.