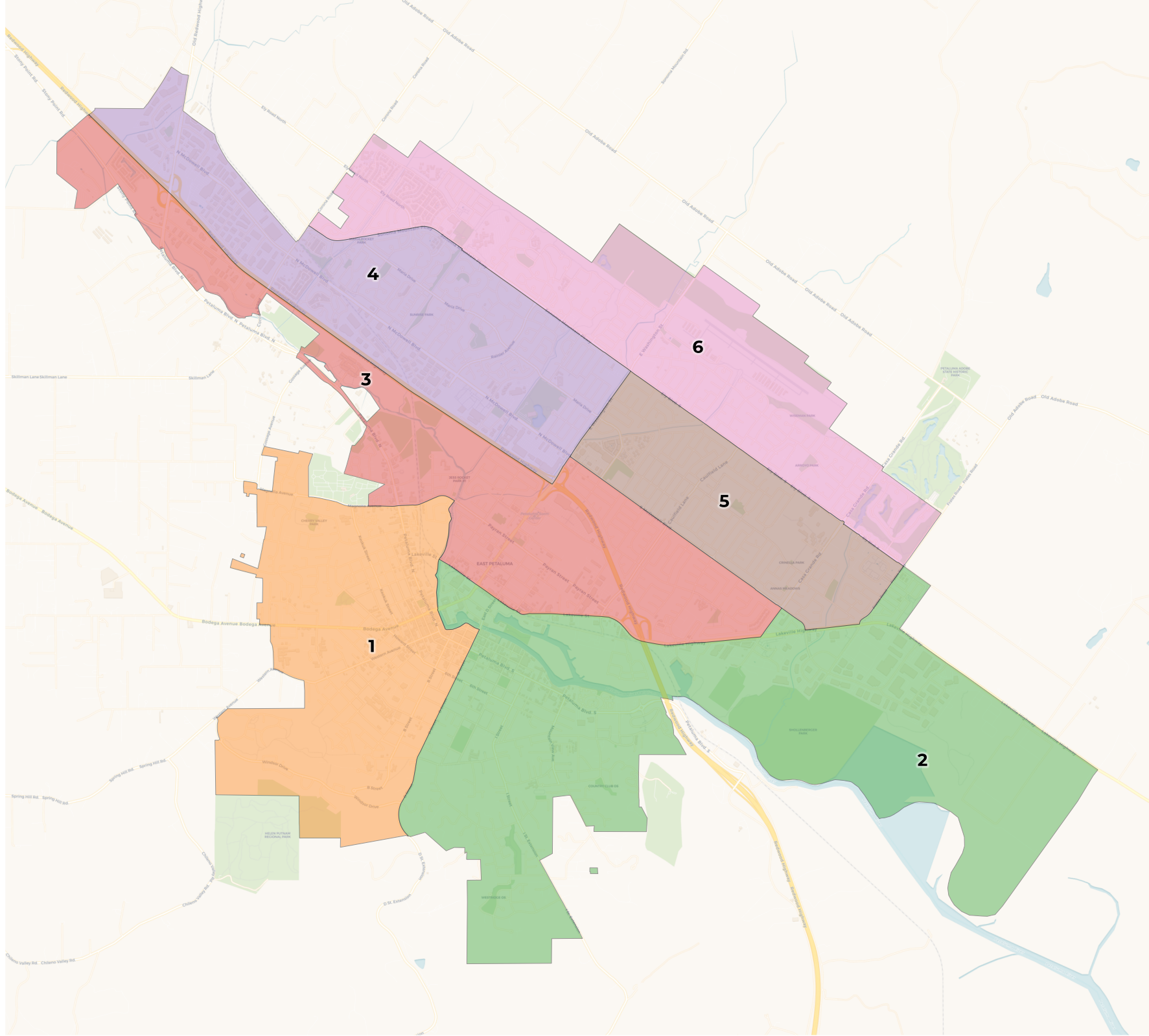




**REDISTRICTING
PARTNERS**

**City of Petaluma-Community
Map**

Block_Districts



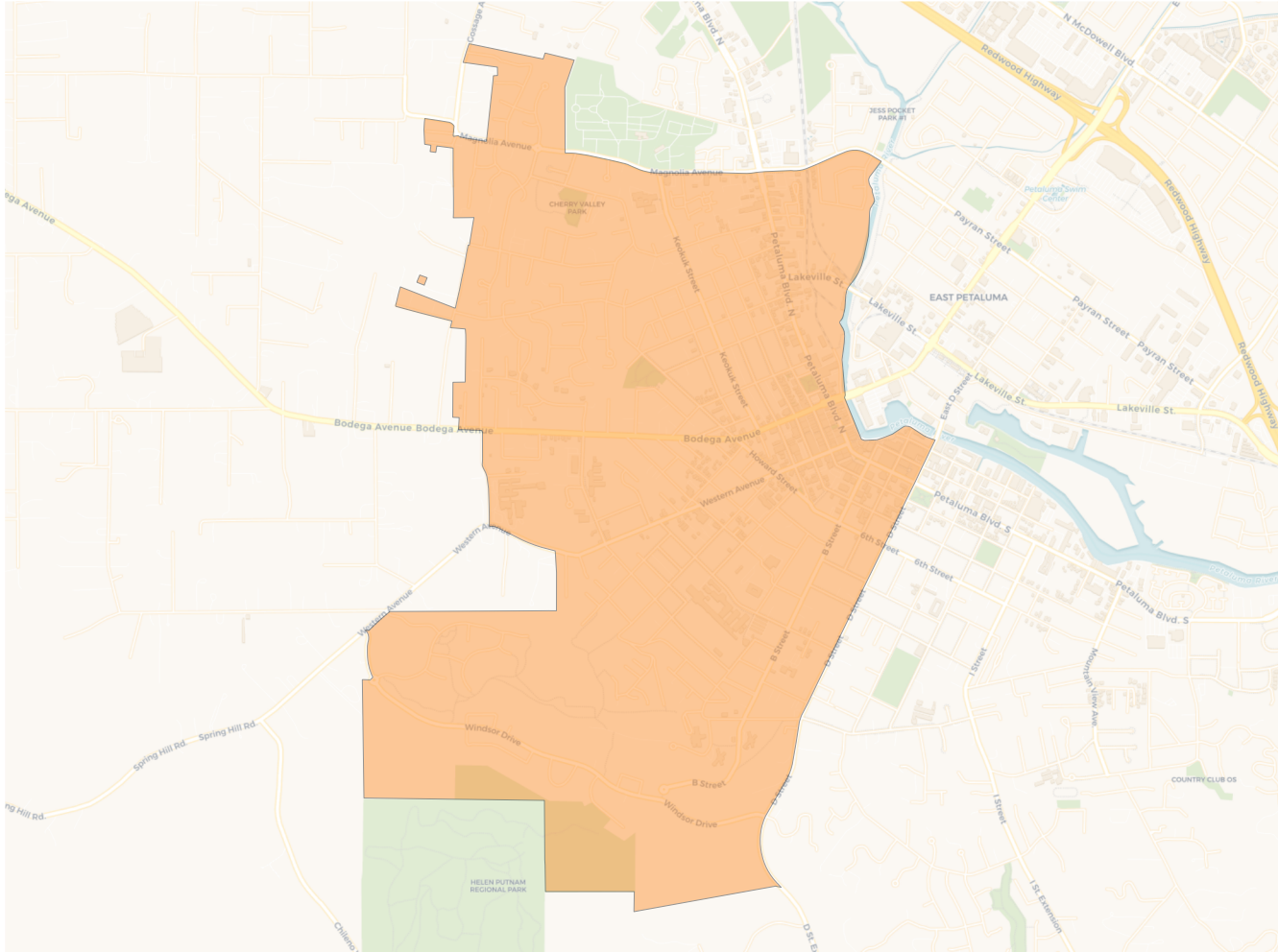
2020 Census

	1	2	3	4	5	6
Population	10,019	9,797	10,304	9,985	9,512	10,229
Deviation	45	-177	330	11	-462	255
Deviation %	0.5%	-1.8%	3.3%	0.1%	-4.6%	2.6%
Other	8,012	7,774	6,043	6,885	6,282	7,618
Other %	80.0%	79.4%	58.6%	69.0%	66.0%	74.5%
Latino	1,667	1,460	3,679	2,441	2,644	1,743
Latino %	16.6%	14.9%	35.7%	24.4%	27.8%	17.0%
Asian	258	429	381	544	435	765
Asian %	2.6%	4.4%	3.7%	5.4%	4.6%	7.5%
Black	82	134	201	115	151	103
Black %	0.8%	1.4%	2.0%	1.2%	1.6%	1.0%

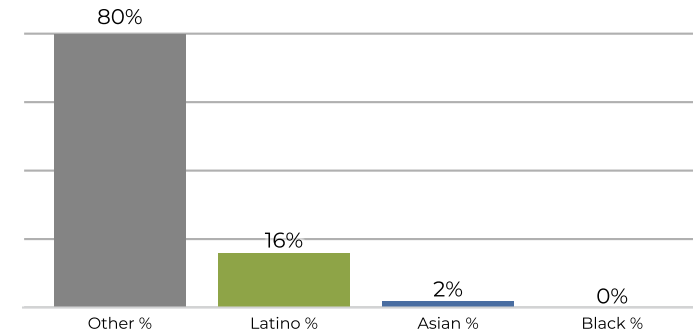
Citizen Voting Age Population (CVAP)

	1	2	3	4	5	6
Total CVAP	7,662	7,164	6,960	6,765	6,848	7,923
Other CVAP	6,521	6,112	5,212	5,484	5,445	6,508
Other CVAP %	85.1%	85.3%	74.9%	81.1%	79.5%	82.1%
Latino CVAP	867	714	1,345	838	1,130	936
Latino CVAP %	11.3%	10.0%	19.3%	12.4%	16.5%	11.8%
Asian CVAP	213	243	284	318	224	382
Asian CVAP %	2.8%	3.4%	4.1%	4.7%	3.3%	4.8%
Black CVAP	61	95	119	125	49	97
Black CVAP %	0.8%	1.3%	1.7%	1.8%	0.7%	1.2%

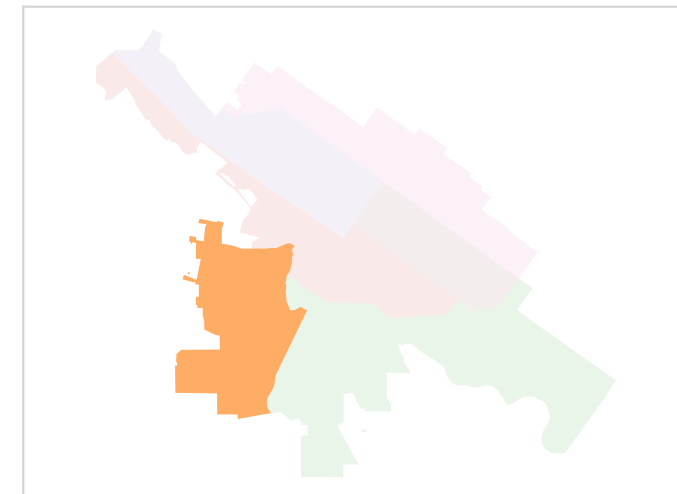
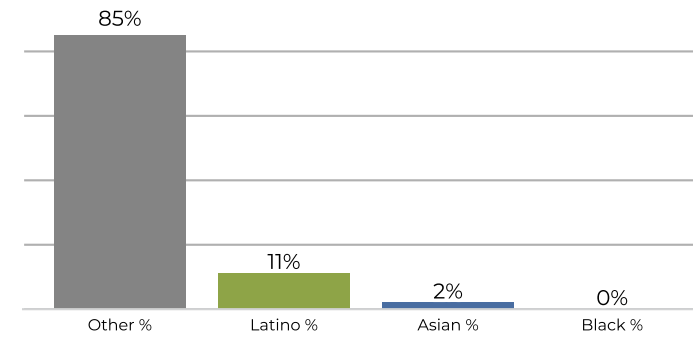
District 1



2020 Census

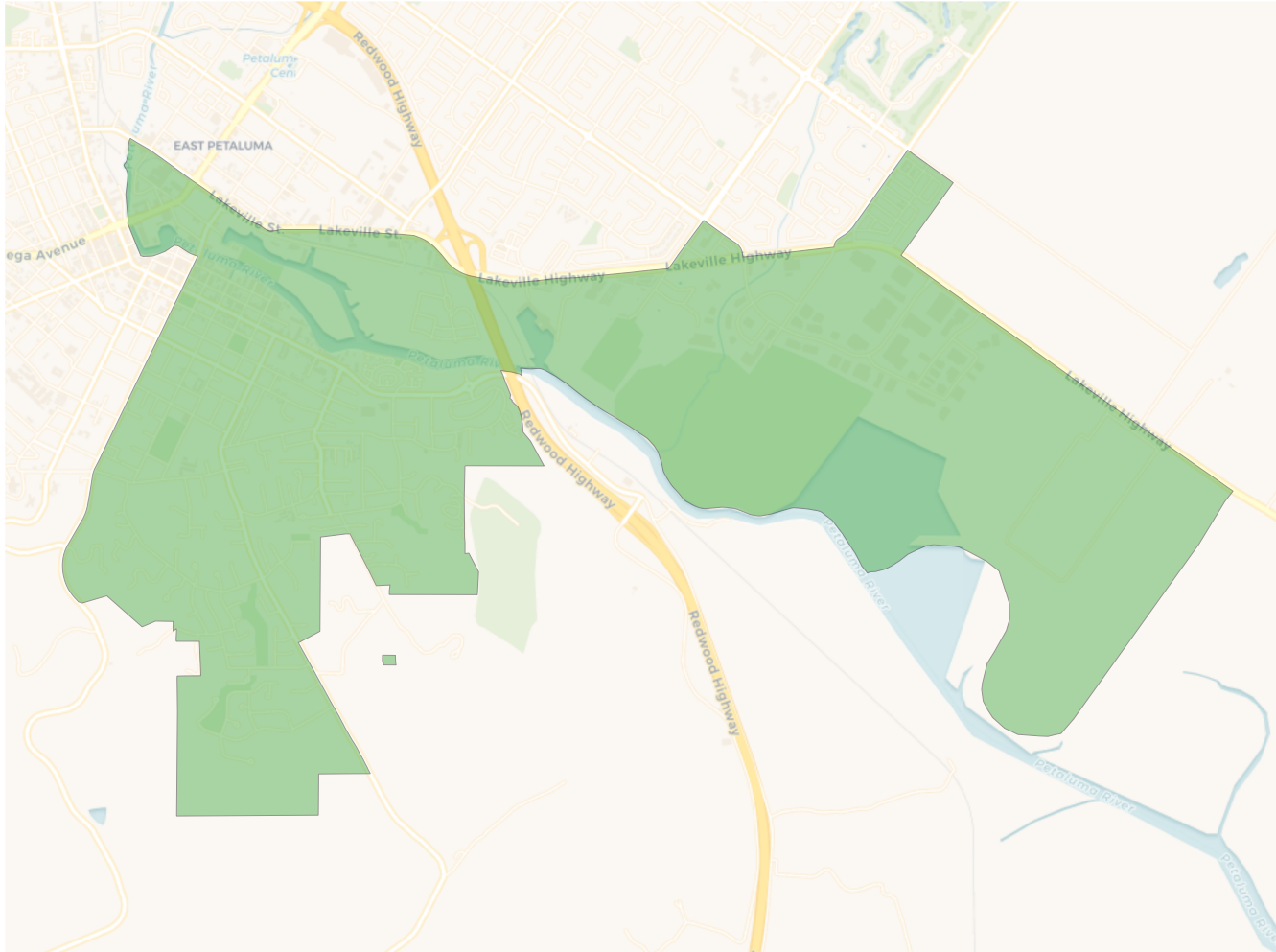


Citizen Voting Age Population

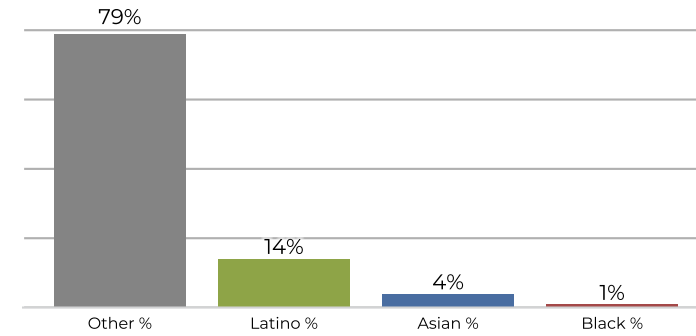


Population	Deviation	Deviation %	Other	Other %	Latino	Latino %	Asian	Asian %	Black	Black %
10,019	45	0.5%	8,012	80.0%	1,667	16.6%	258	2.6%	82	0.8%
Total CVAP	Other CVAP	Other CVAP %	Latino CVAP	Latino CVAP %	Asian CVAP	Asian CVAP %	Black CVAP	Black CVAP %		
7,662	6,521	85.1%	867	11.3%	213	2.8%	61	0.8%		

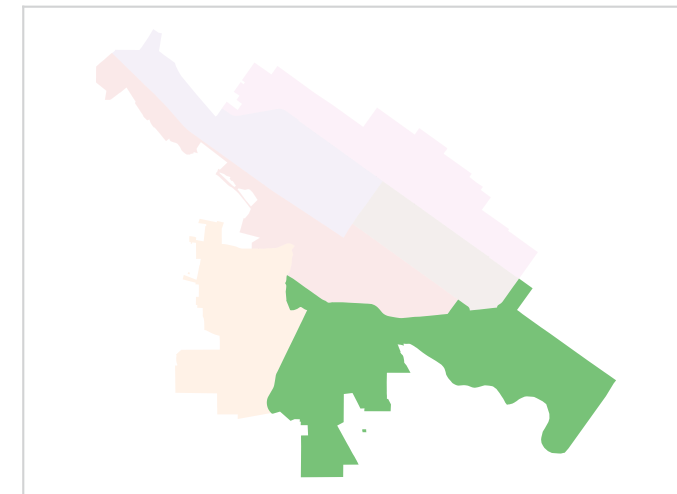
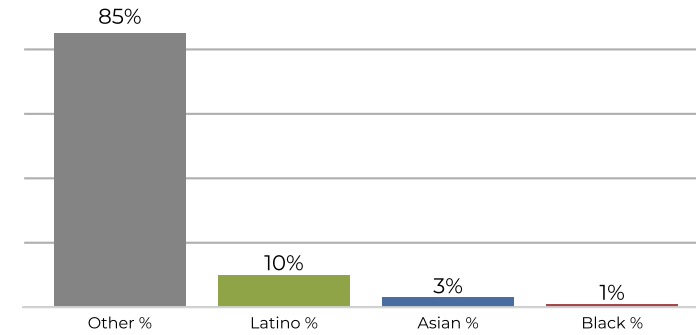
District 2



2020 Census

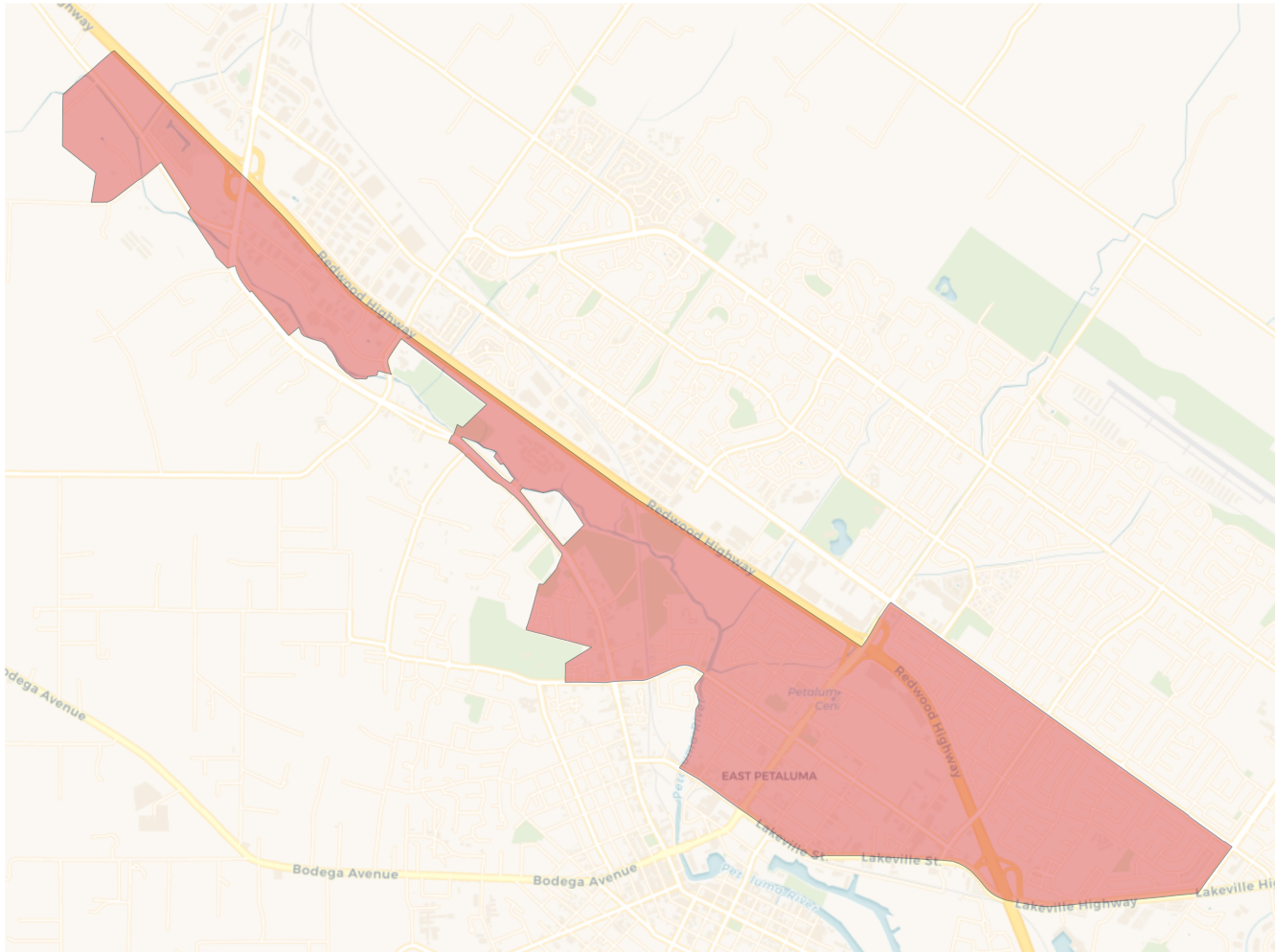


Citizen Voting Age Population

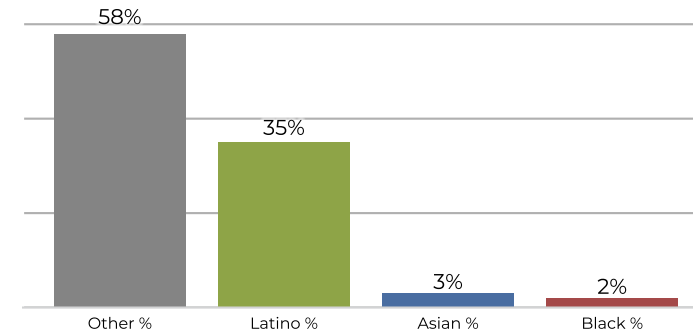


Population	Deviation	Deviation %	Other	Other %	Latino	Latino %	Asian	Asian %	Black	Black %
9,797	-177	-1.8%	7,774	79.4%	1,460	14.9%	429	4.4%	134	1.4%
Total CVAP	Other CVAP	Other CVAP %	Latino CVAP	Latino CVAP %	Asian CVAP	Asian CVAP %	Black CVAP	Black CVAP %		
7,164	6,112	85.3%	714	10.0%	243	3.4%	95	1.3%		

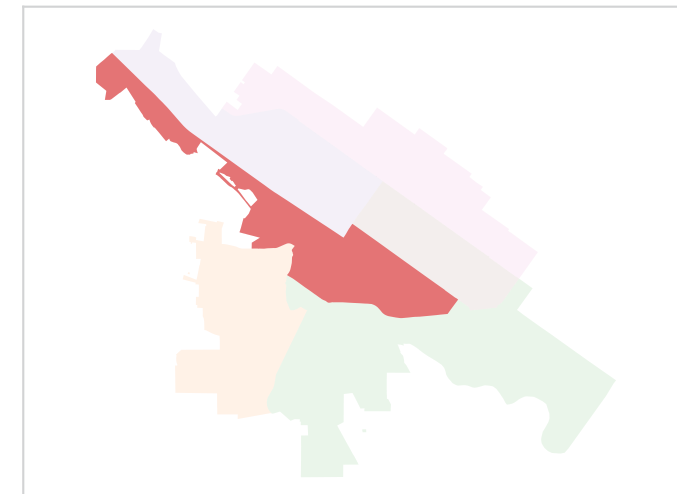
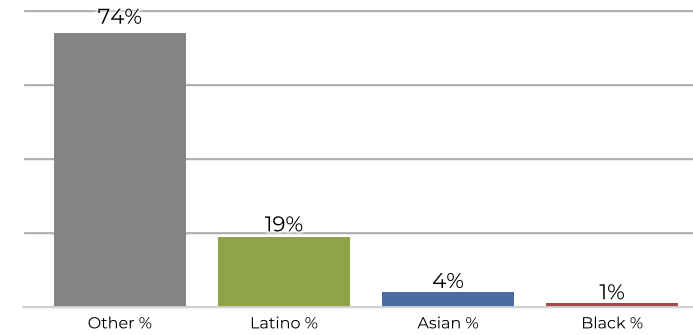
District 3



2020 Census

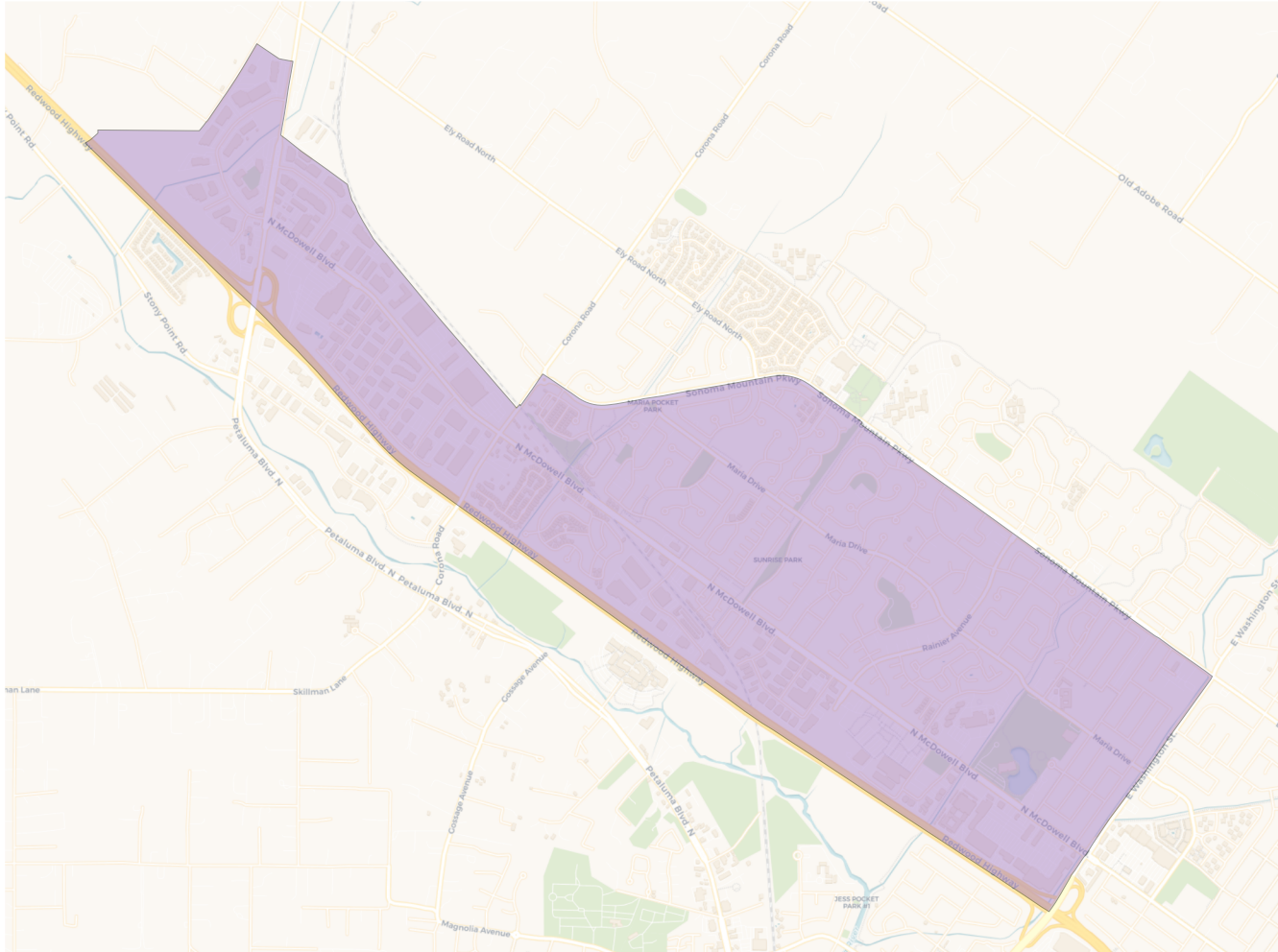


Citizen Voting Age Population

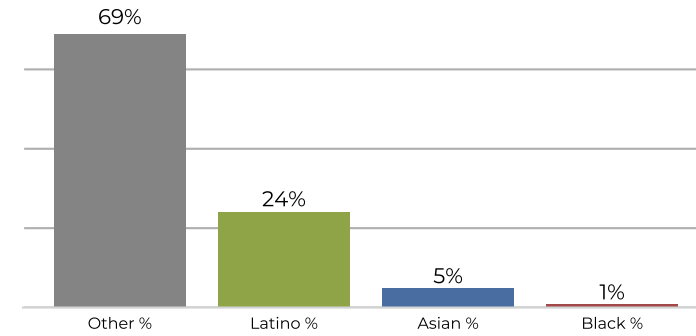


Population	Deviation	Deviation %	Other	Other %	Latino	Latino %	Asian	Asian %	Black	Black %
10,304	330	3.3%	6,043	58.6%	3,679	35.7%	381	3.7%	201	2.0%
Total CVAP	Other CVAP	Other CVAP %	Latino CVAP	Latino CVAP %	Asian CVAP	Asian CVAP %	Black CVAP	Black CVAP %		
6,960	5,212	74.9%	1,345	19.3%	284	4.1%	119	1.7%		

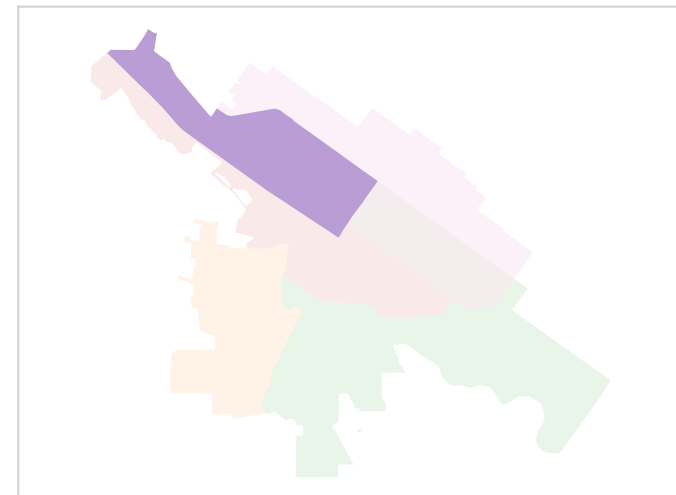
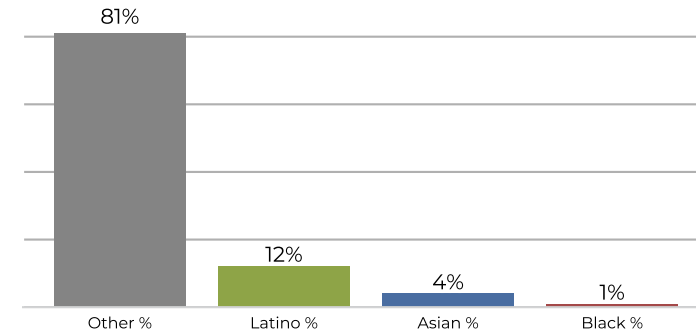
District 4



2020 Census

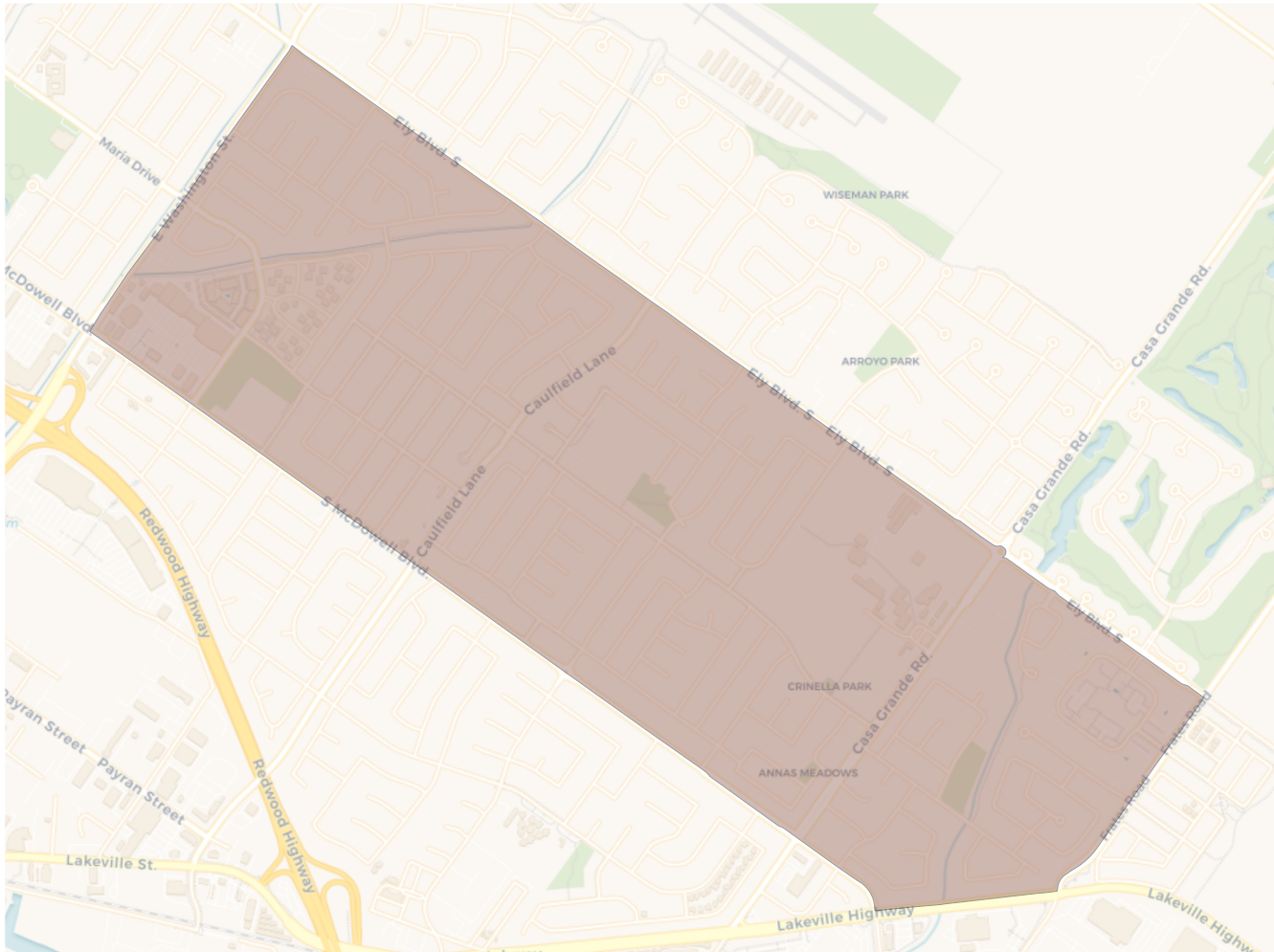


Citizen Voting Age Population

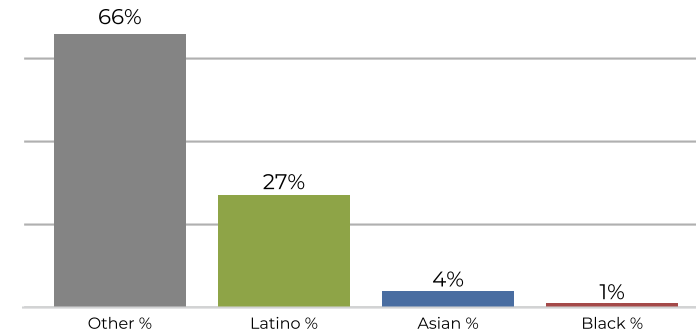


Population	Deviation	Deviation %	Other	Other %	Latino	Latino %	Asian	Asian %	Black	Black %
9,985	11	0.1%	6,885	69.0%	2,441	24.4%	544	5.4%	115	1.2%
Total CVAP	Other CVAP	Other CVAP %	Latino CVAP	Latino CVAP %	Asian CVAP	Asian CVAP %	Black CVAP	Black CVAP %		
6,765	5,484	81.1%	838	12.4%	318	4.7%	125	1.8%		

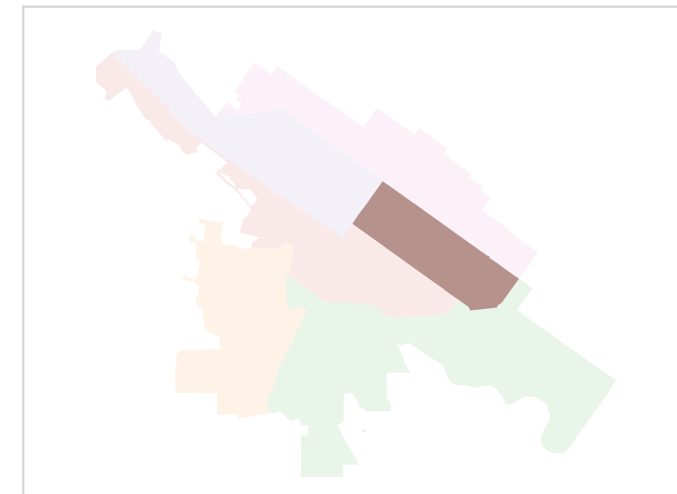
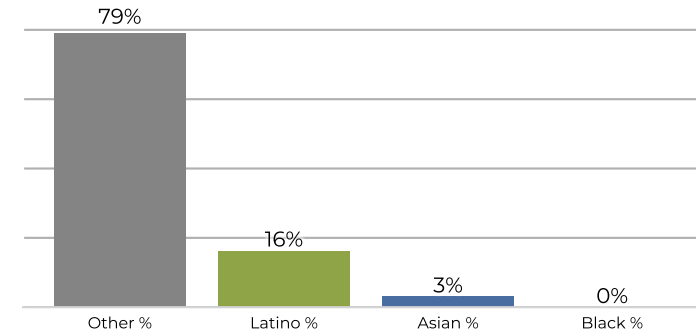
District 5



2020 Census

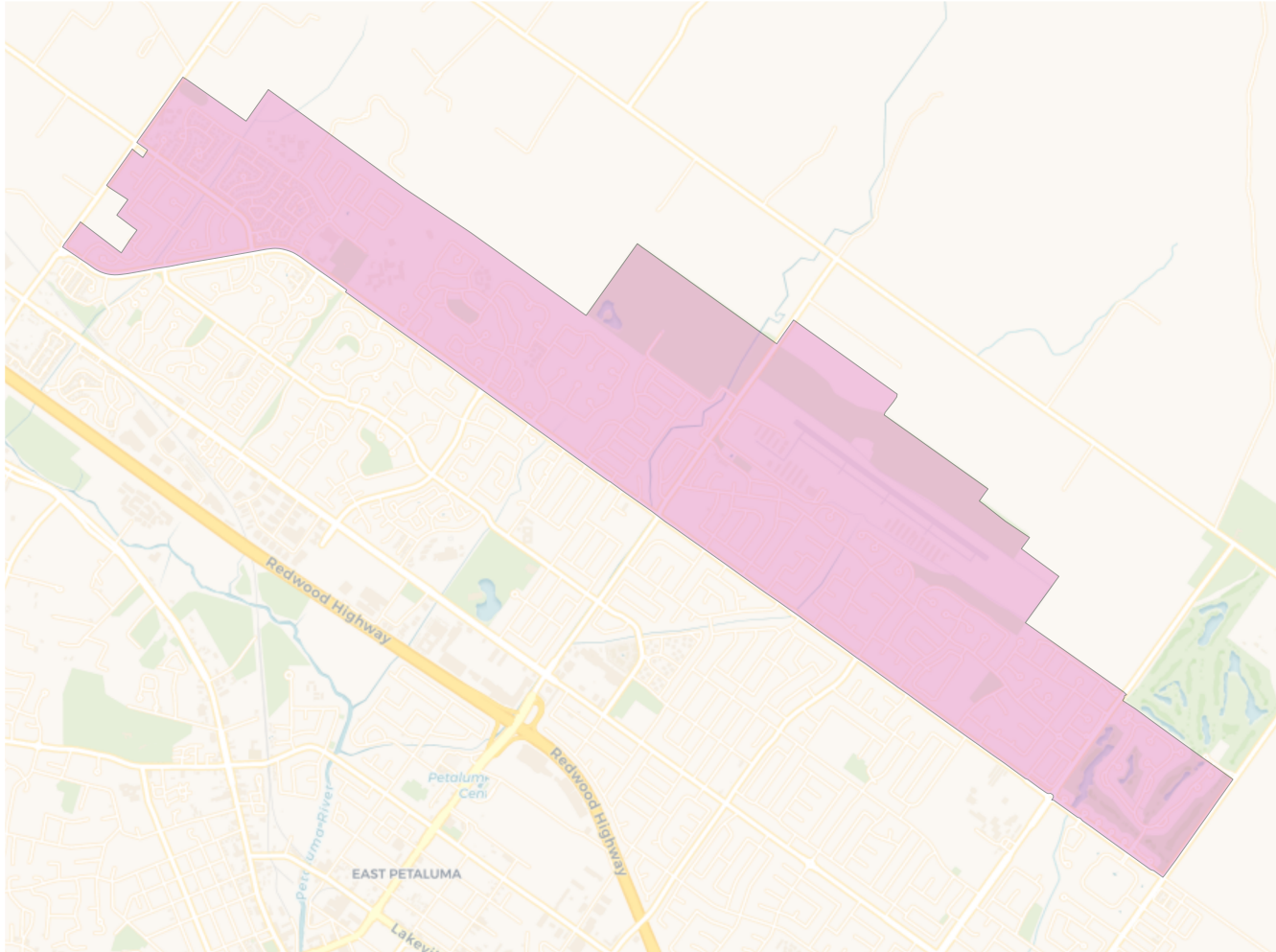


Citizen Voting Age Population

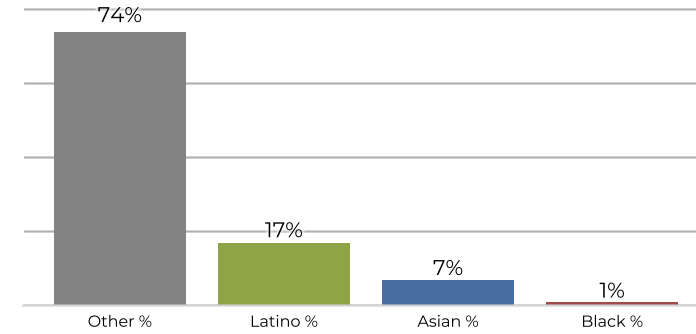


Population	Deviation	Deviation %	Other	Other %	Latino	Latino %	Asian	Asian %	Black	Black %
9,512	-462	-4.6%	6,282	66.0%	2,644	27.8%	435	4.6%	151	1.6%
Total CVAP	Other CVAP	Other CVAP %	Latino CVAP	Latino CVAP %	Asian CVAP	Asian CVAP %	Black CVAP	Black CVAP %		
6,848	5,445	79.5%	1,130	16.5%	224	3.3%	49	0.7%		

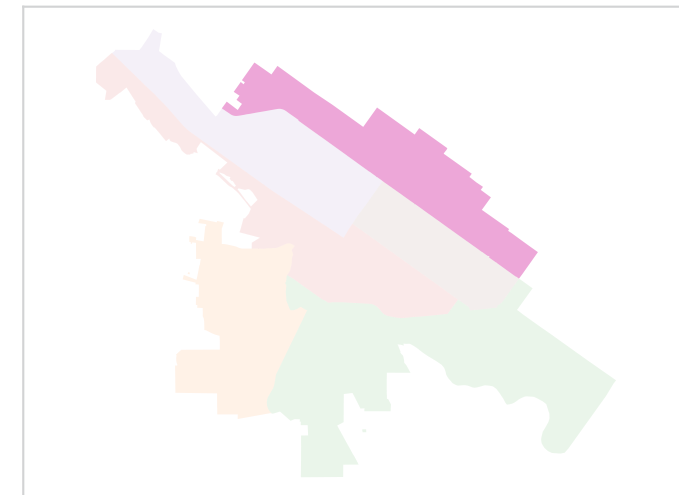
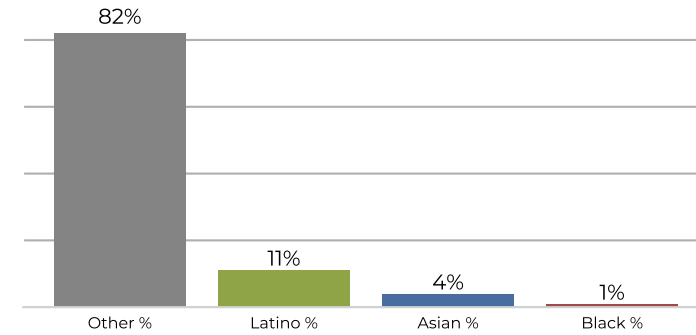
District 6



2020 Census



Citizen Voting Age Population



Population	Deviation	Deviation %	Other	Other %	Latino	Latino %	Asian	Asian %	Black	Black %
10,229	255	2.6%	7,618	74.5%	1,743	17.0%	765	7.5%	103	1.0%
Total CVAP	Other CVAP	Other CVAP %	Latino CVAP	Latino CVAP %	Asian CVAP	Asian CVAP %	Black CVAP	Black CVAP %		
7,923	6,508	82.1%	936	11.8%	382	4.8%	97	1.2%		