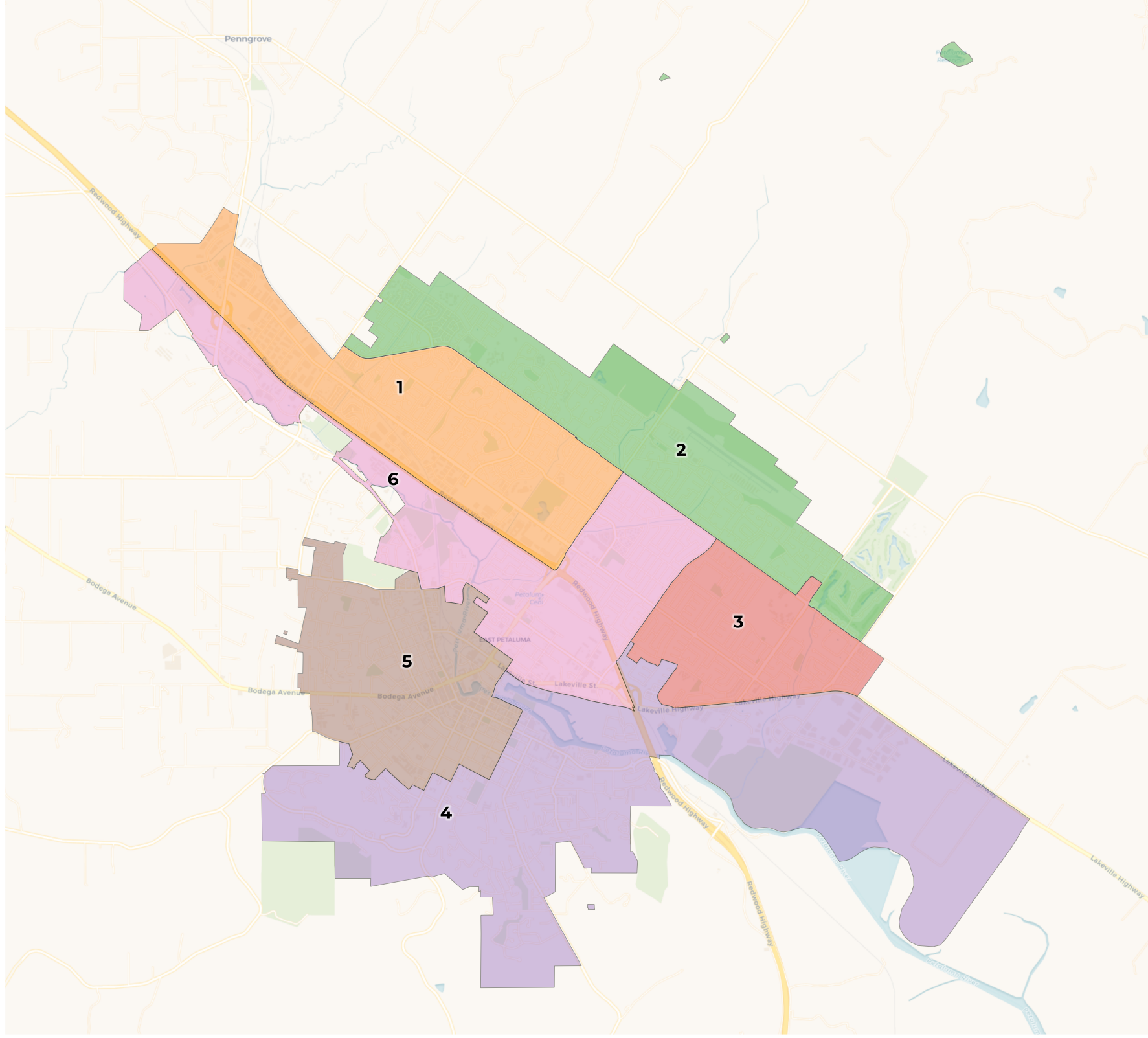




REDISTRICTING PARTNERS

City of Petaluma-Community Map

City_of_Petaluma_AA_H_2



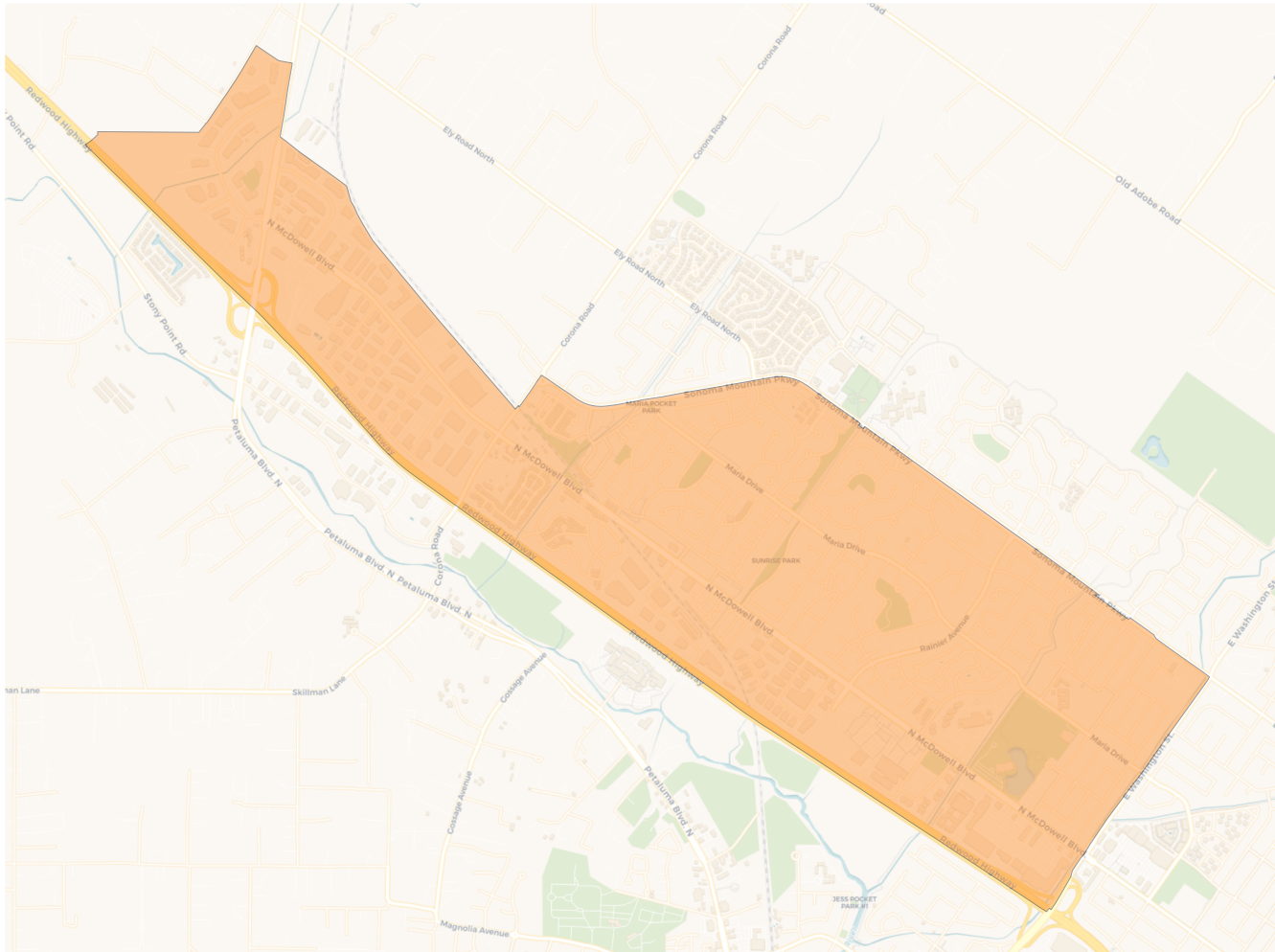
2020 Census

	1	2	3	4	5	6
Population	9,985	10,046	9,938	9,982	9,954	9,941
Deviation	11	72	-36	8	-20	-33
Deviation %	0.1%	0.7%	-0.4%	0.1%	-0.2%	-0.3%
Other	6,885	7,489	6,174	8,219	7,555	6,292
Other %	69.0%	74.5%	62.1%	82.3%	75.9%	63.3%
Latino	2,441	1,711	3,041	1,253	2,054	3,134
Latino %	24.4%	17.0%	30.6%	12.6%	20.6%	31.5%
Asian	544	745	519	400	227	377
Asian %	5.4%	7.4%	5.2%	4.0%	2.3%	3.8%
Black	115	101	204	110	118	138
Black %	1.2%	1.0%	2.1%	1.1%	1.2%	1.4%

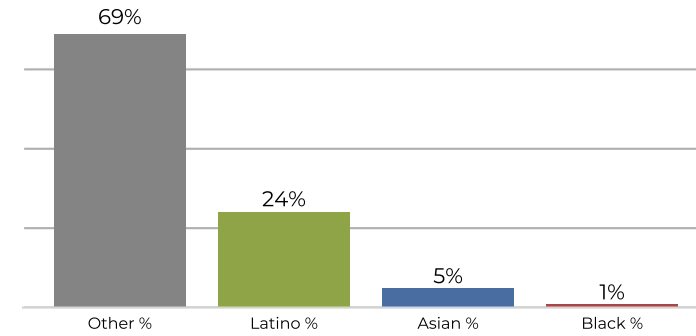
Citizen Voting Age Population (CVAP)

	1	2	3	4	5	6
Total CVAP	6,765	7,783	6,683	7,838	7,075	7,178
Other CVAP	5,484	6,396	5,093	6,876	5,902	5,531
Other CVAP %	81.1%	82.2%	76.2%	87.7%	83.4%	77.1%
Latino CVAP	838	921	1,145	621	926	1,379
Latino CVAP %	12.4%	11.8%	17.1%	7.9%	13.1%	19.2%
Asian CVAP	318	371	361	247	167	200
Asian CVAP %	4.7%	4.8%	5.4%	3.2%	2.4%	2.8%
Black CVAP	125	95	84	94	80	68
Black CVAP %	1.8%	1.2%	1.3%	1.2%	1.1%	0.9%

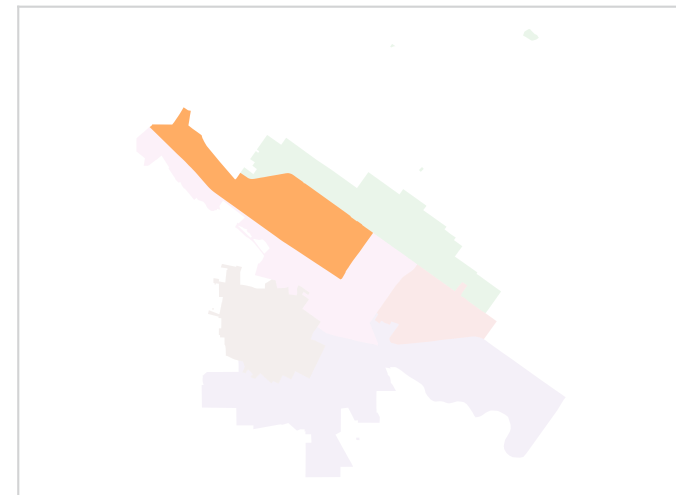
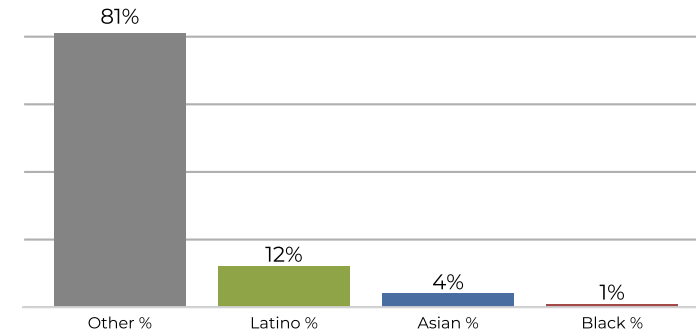
District 1



2020 Census

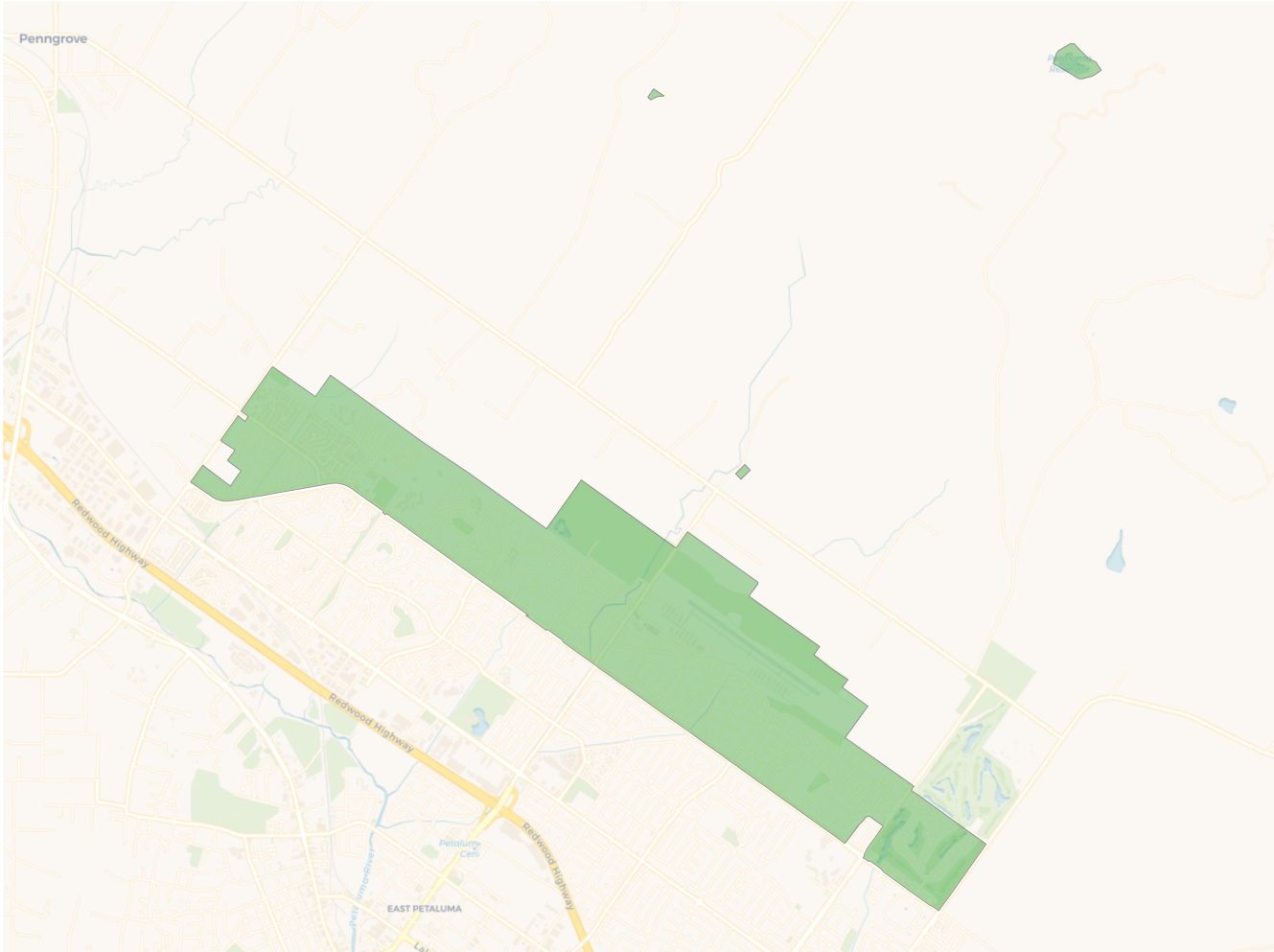


Citizen Voting Age Population

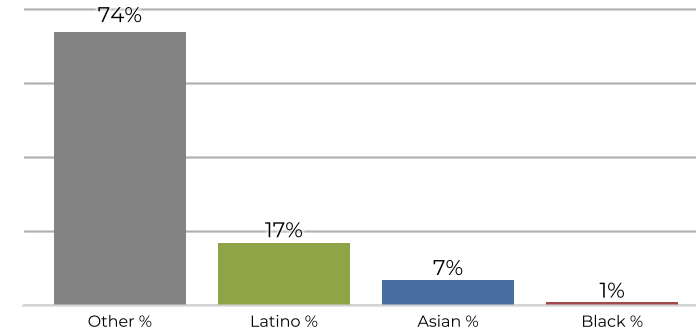


Population	Deviation	Deviation %	Other	Other %	Latino	Latino %	Asian	Asian %	Black	Black %
9,985	11	0.1%	6,885	69.0%	2,441	24.4%	544	5.4%	115	1.2%
Total CVAP	Other CVAP	Other CVAP %	Latino CVAP	Latino CVAP %	Asian CVAP	Asian CVAP %	Black CVAP	Black CVAP %		
6,765	5,484	81.1%	838	12.4%	318	4.7%	125	1.8%		

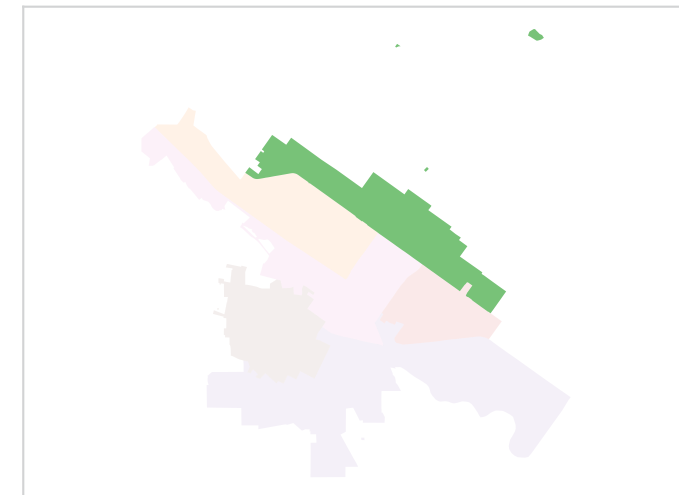
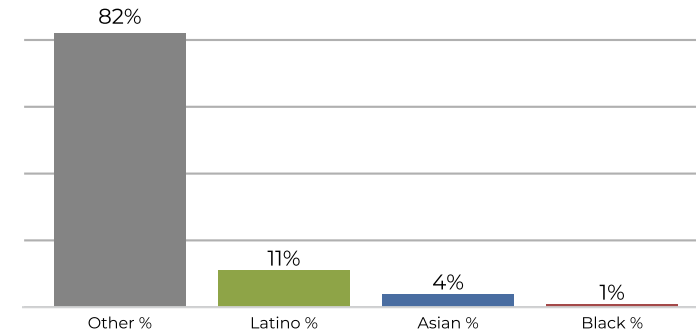
District 2



2020 Census

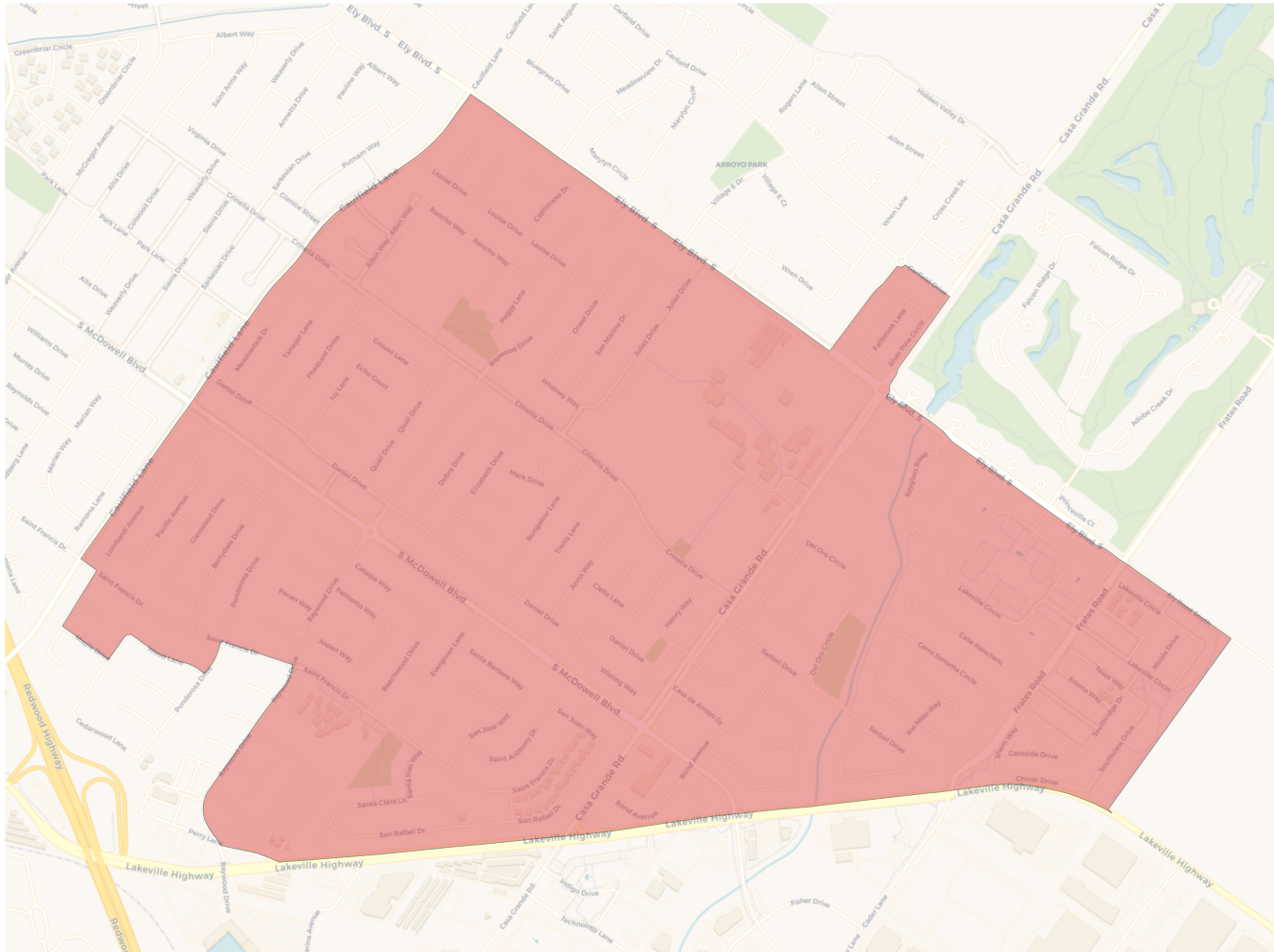


Citizen Voting Age Population

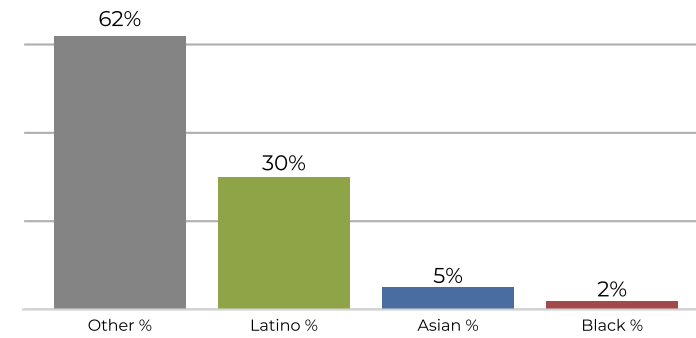


Population	Deviation	Deviation %	Other	Other %	Latino	Latino %	Asian	Asian %	Black	Black %
10,046	72	0.7%	7,489	74.5%	1,711	17.0%	745	7.4%	101	1.0%
Total CVAP	Other CVAP	Other CVAP %	Latino CVAP	Latino CVAP %	Asian CVAP	Asian CVAP %	Black CVAP	Black CVAP %		
7,783	6,396	82.2%	921	11.8%	371	4.8%	95	1.2%		

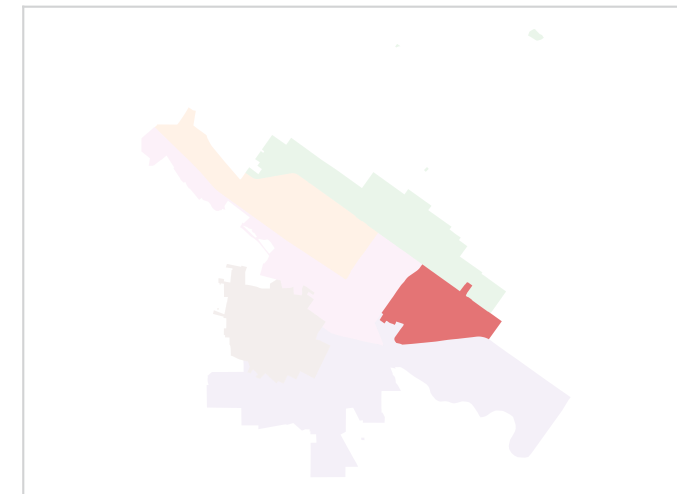
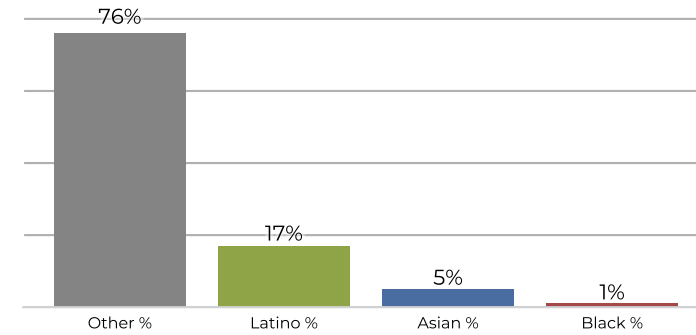
District 3



2020 Census

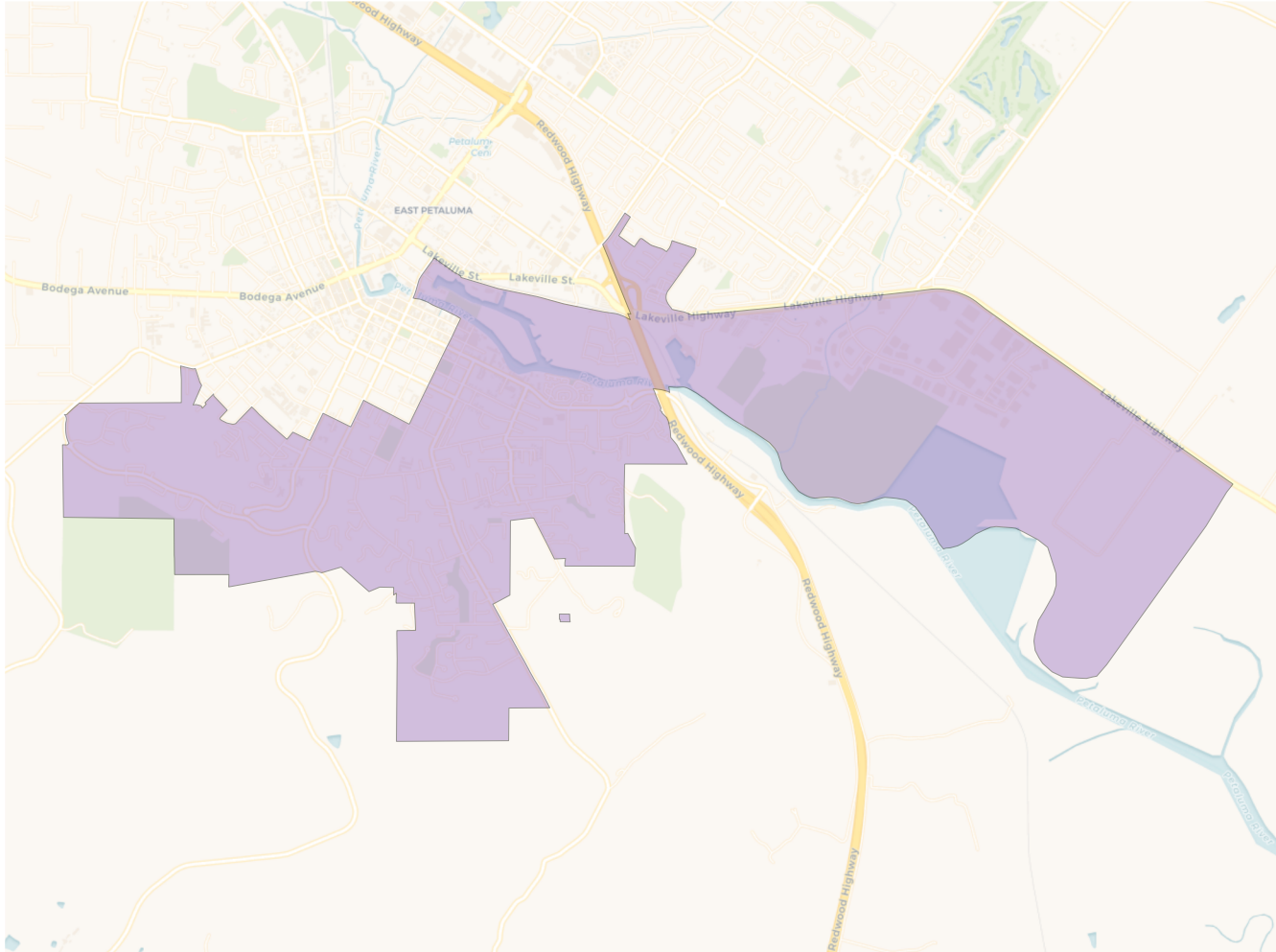


Citizen Voting Age Population

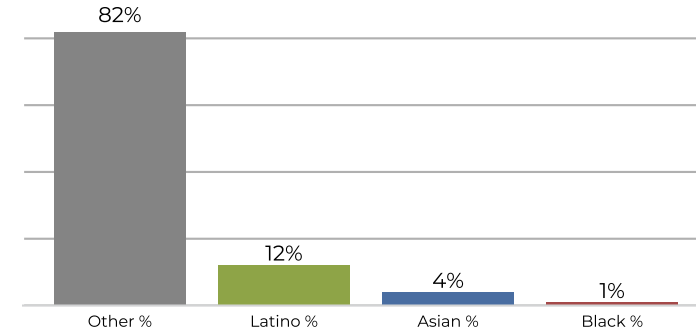


Population	Deviation	Deviation %	Other	Other %	Latino	Latino %	Asian	Asian %	Black	Black %
9,938	-36	-0.4%	6,174	62.1%	3,041	30.6%	519	5.2%	204	2.1%
Total CVAP	Other CVAP	Other CVAP %	Latino CVAP	Latino CVAP %	Asian CVAP	Asian CVAP %	Black CVAP	Black CVAP %		
6,683	5,093	76.2%	1,145	17.1%	361	5.4%	84	1.3%		

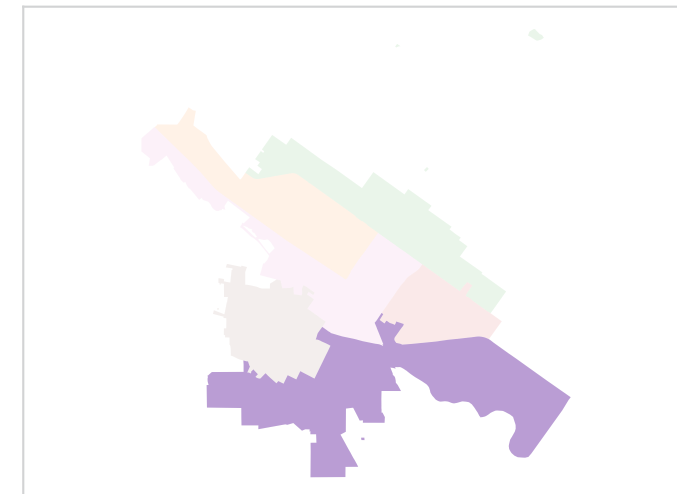
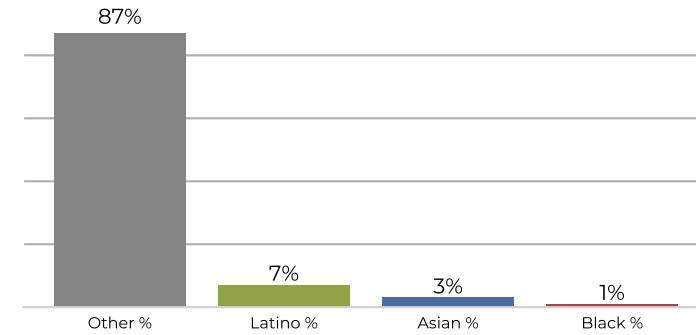
District 4



2020 Census

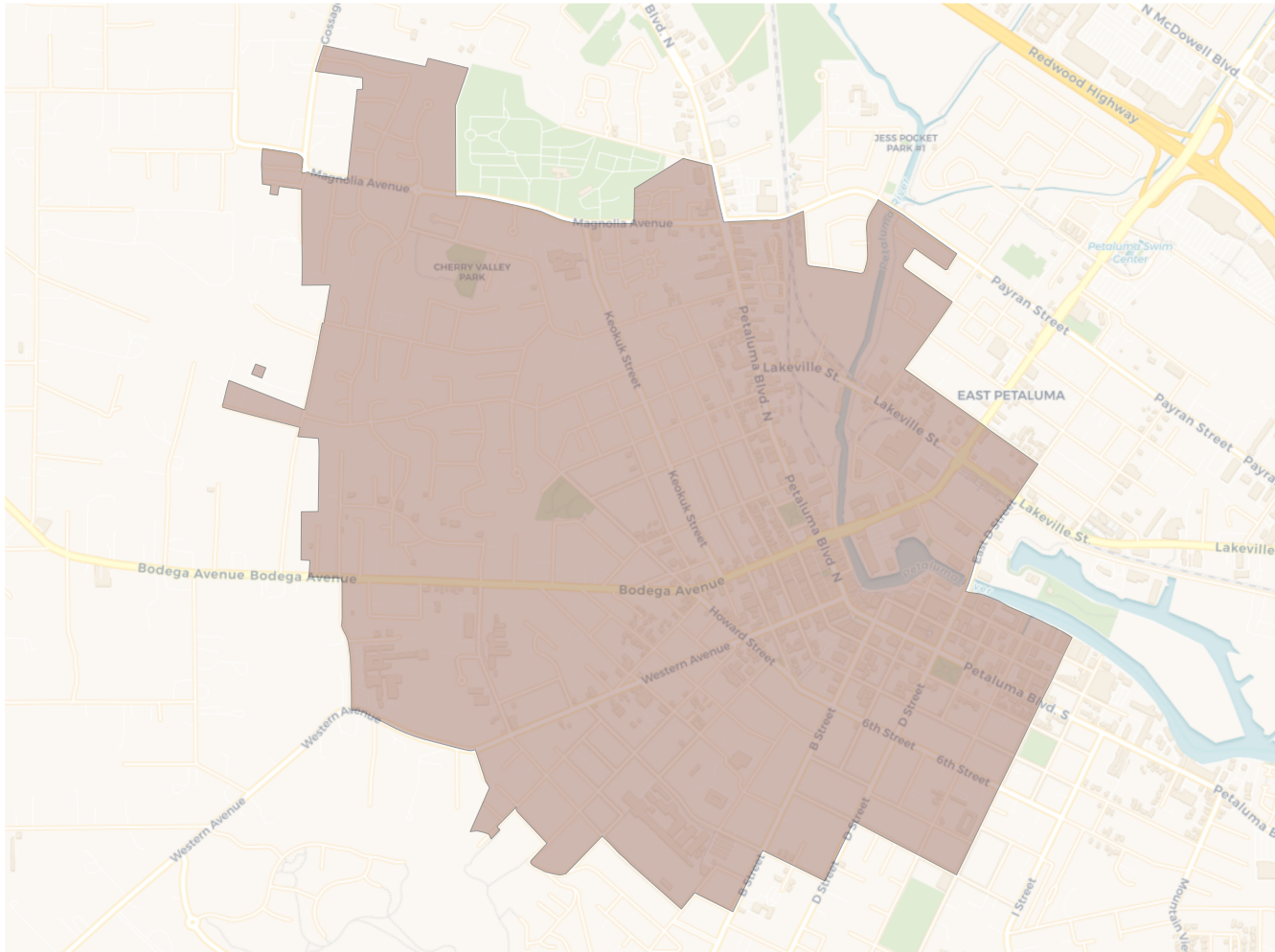


Citizen Voting Age Population

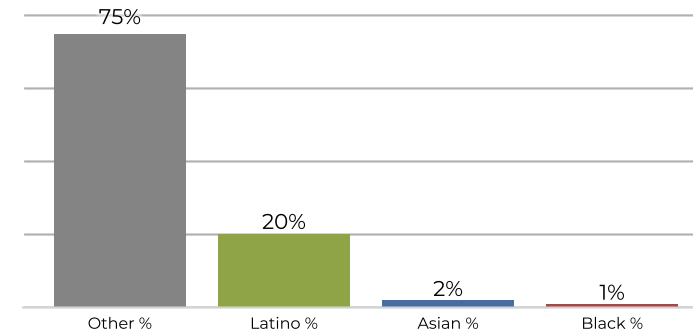


Population	Deviation	Deviation %	Other	Other %	Latino	Latino %	Asian	Asian %	Black	Black %
9,982	8	0.1%	8,219	82.3%	1,253	12.6%	400	4.0%	110	1.1%
Total CVAP	Other CVAP	Other CVAP %	Latino CVAP	Latino CVAP %	Asian CVAP	Asian CVAP %	Black CVAP	Black CVAP %		
7,838	6,876	87.7%	621	7.9%	247	3.2%	94	1.2%		

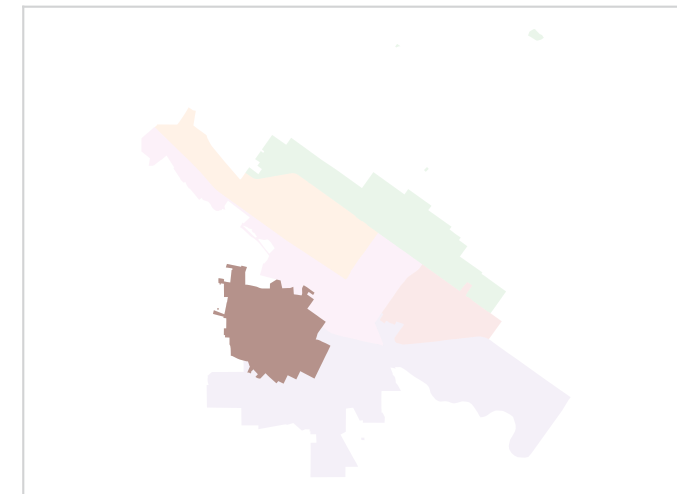
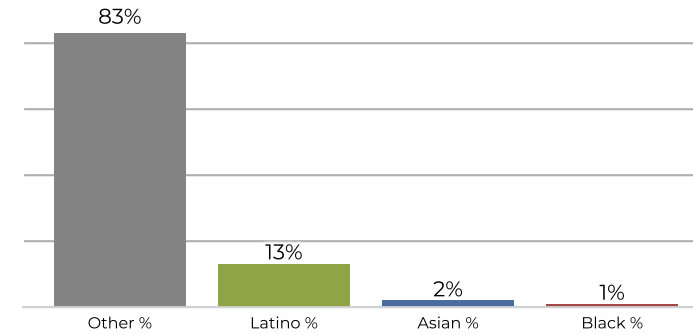
District 5



2020 Census

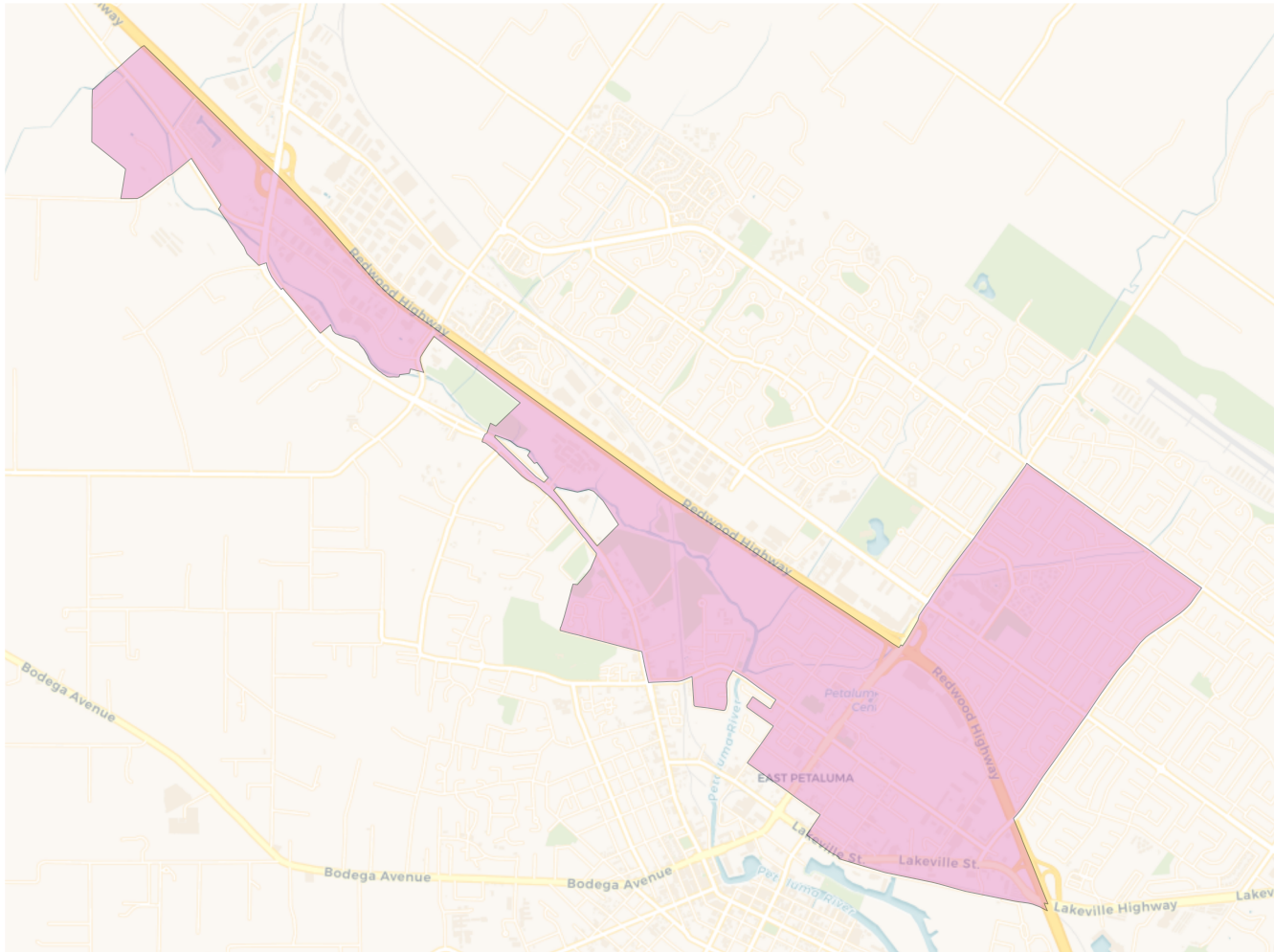


Citizen Voting Age Population

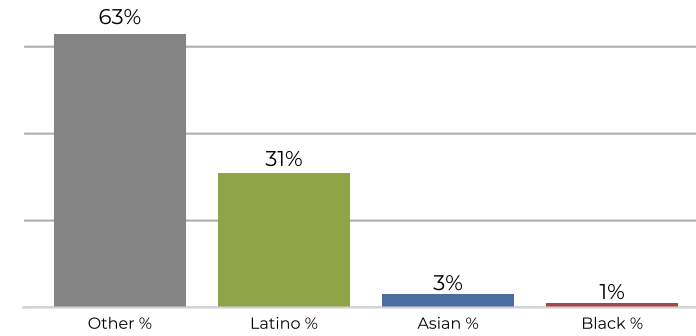


Population	Deviation	Deviation %	Other	Other %	Latino	Latino %	Asian	Asian %	Black	Black %
9,954	-20	-0.2%	7,555	75.9%	2,054	20.6%	227	2.3%	118	1.2%
Total CVAP	Other CVAP	Other CVAP %	Latino CVAP	Latino CVAP %	Asian CVAP	Asian CVAP %	Black CVAP	Black CVAP %		
7,075	5,902	83.4%	926	13.1%	167	2.4%	80	1.1%		

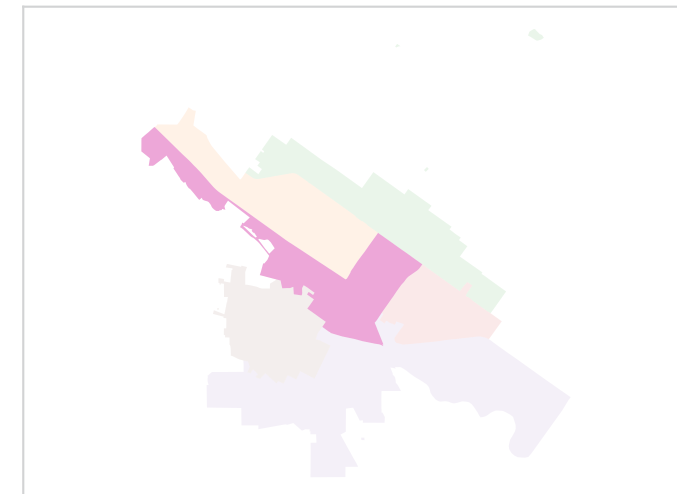
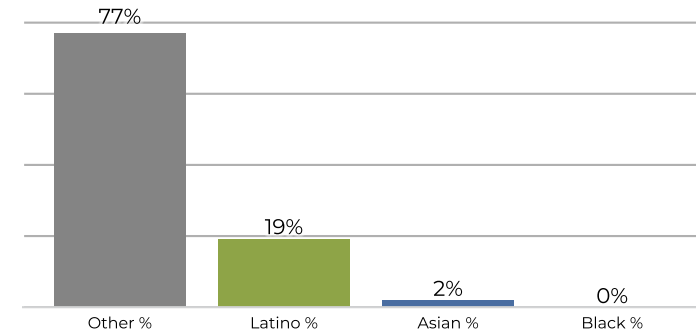
District 6



2020 Census



Citizen Voting Age Population



Population	Deviation	Deviation %	Other	Other %	Latino	Latino %	Asian	Asian %	Black	Black %
9,941	-33	-0.3%	6,292	63.3%	3,134	31.5%	377	3.8%	138	1.4%
Total CVAP	Other CVAP	Other CVAP %	Latino CVAP	Latino CVAP %	Asian CVAP	Asian CVAP %	Black CVAP	Black CVAP %		
7,178	5,531	77.1%	1,379	19.2%	200	2.8%	68	0.9%		