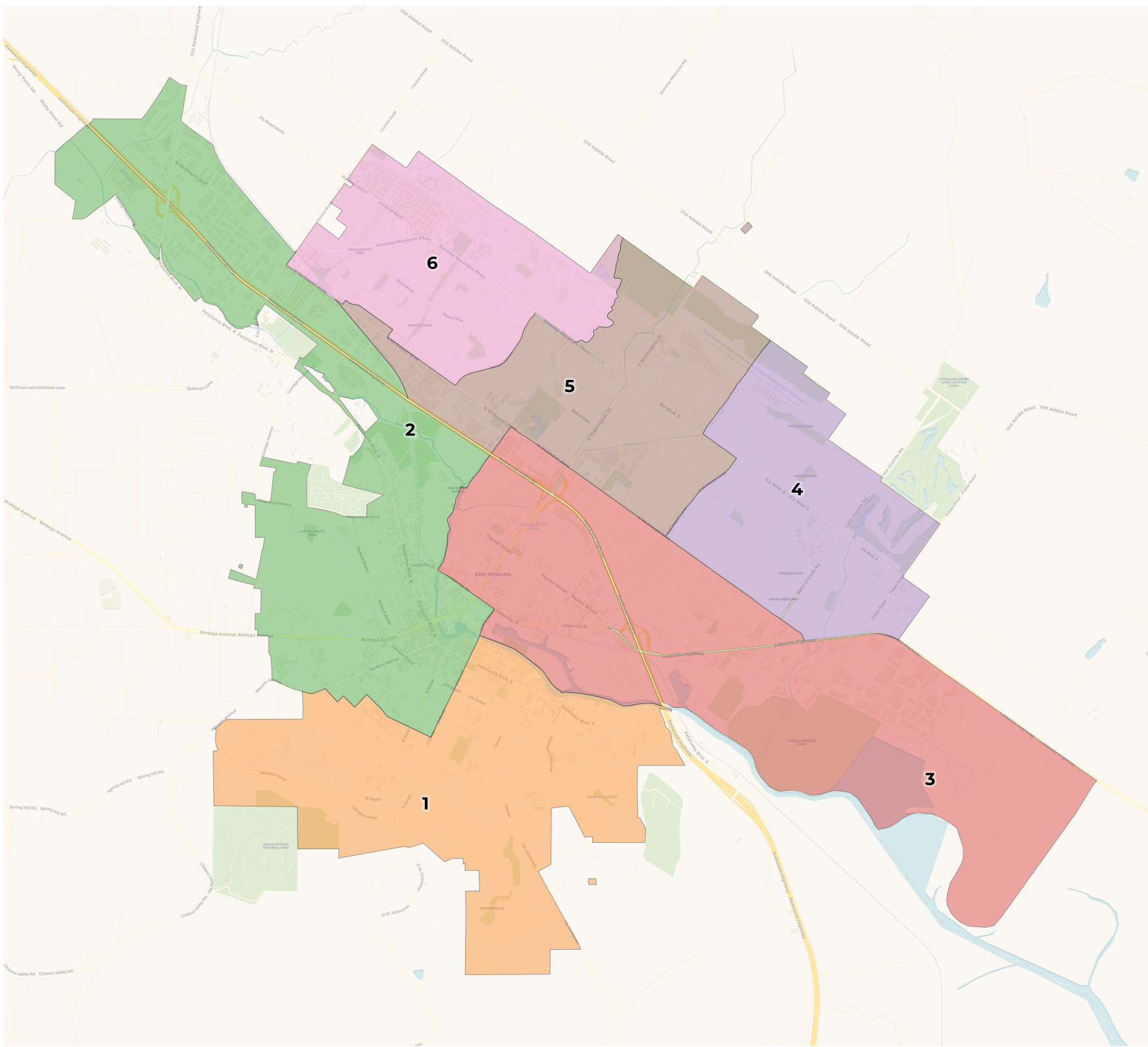




**REDISTRICTING  
PARTNERS**

# City of Petaluma-Community Map

Districting\_Plan



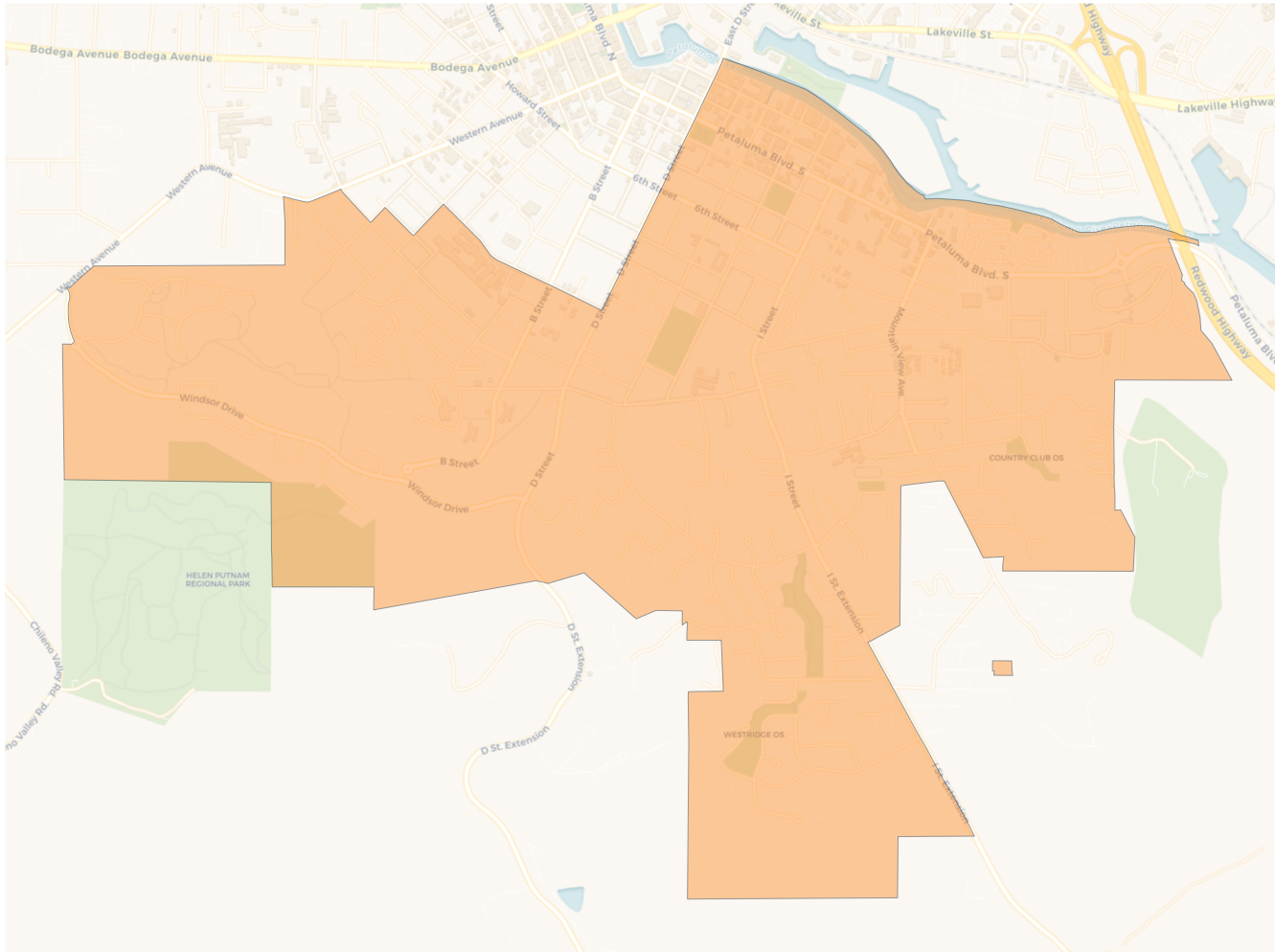
**2020 Census**

	1	2	3	4	5	6
Population	9,901	10,115	10,281	9,875	9,825	9,849
Deviation	-73	141	307	-99	-149	-125
Deviation %	-0.7%	1.4%	3.1%	-1.0%	-1.5%	-1.3%
Other	8,260	7,674	6,088	6,964	6,477	7,151
Other %	83.4%	75.9%	59.2%	70.5%	65.9%	72.6%
Latino	1,234	2,062	3,547	2,198	2,806	1,787
Latino %	12.5%	20.4%	34.5%	22.3%	28.6%	18.1%
Asian	337	256	412	579	432	796
Asian %	3.4%	2.5%	4.0%	5.9%	4.4%	8.1%
Black	70	123	234	134	110	115
Black %	0.7%	1.2%	2.3%	1.4%	1.1%	1.2%

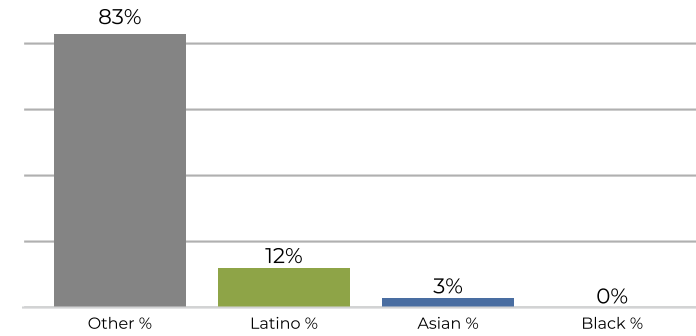
**Citizen Voting Age Population (CVAP)**

	1	2	3	4	5	6
Total CVAP	7,889	7,432	6,762	7,261	7,032	6,946
Other CVAP	6,871	6,219	5,090	5,945	5,549	5,608
Other CVAP %	87.1%	83.7%	75.3%	81.9%	78.9%	80.7%
Latino CVAP	681	941	1,298	924	1,170	816
Latino CVAP %	8.6%	12.7%	19.2%	12.7%	16.6%	11.7%
Asian CVAP	252	165	279	351	178	439
Asian CVAP %	3.2%	2.2%	4.1%	4.8%	2.5%	6.3%
Black CVAP	85	107	95	41	135	83
Black CVAP %	1.1%	1.4%	1.4%	0.6%	1.9%	1.2%

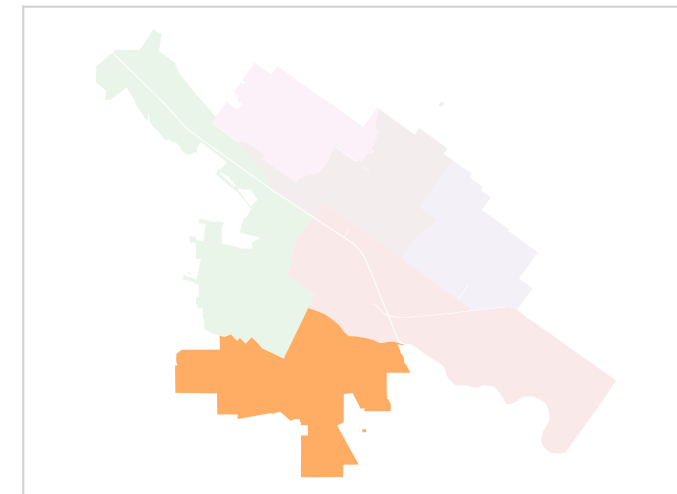
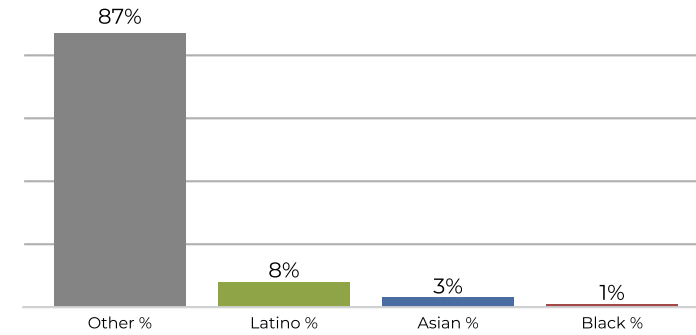
**District 1**



**2020 Census**

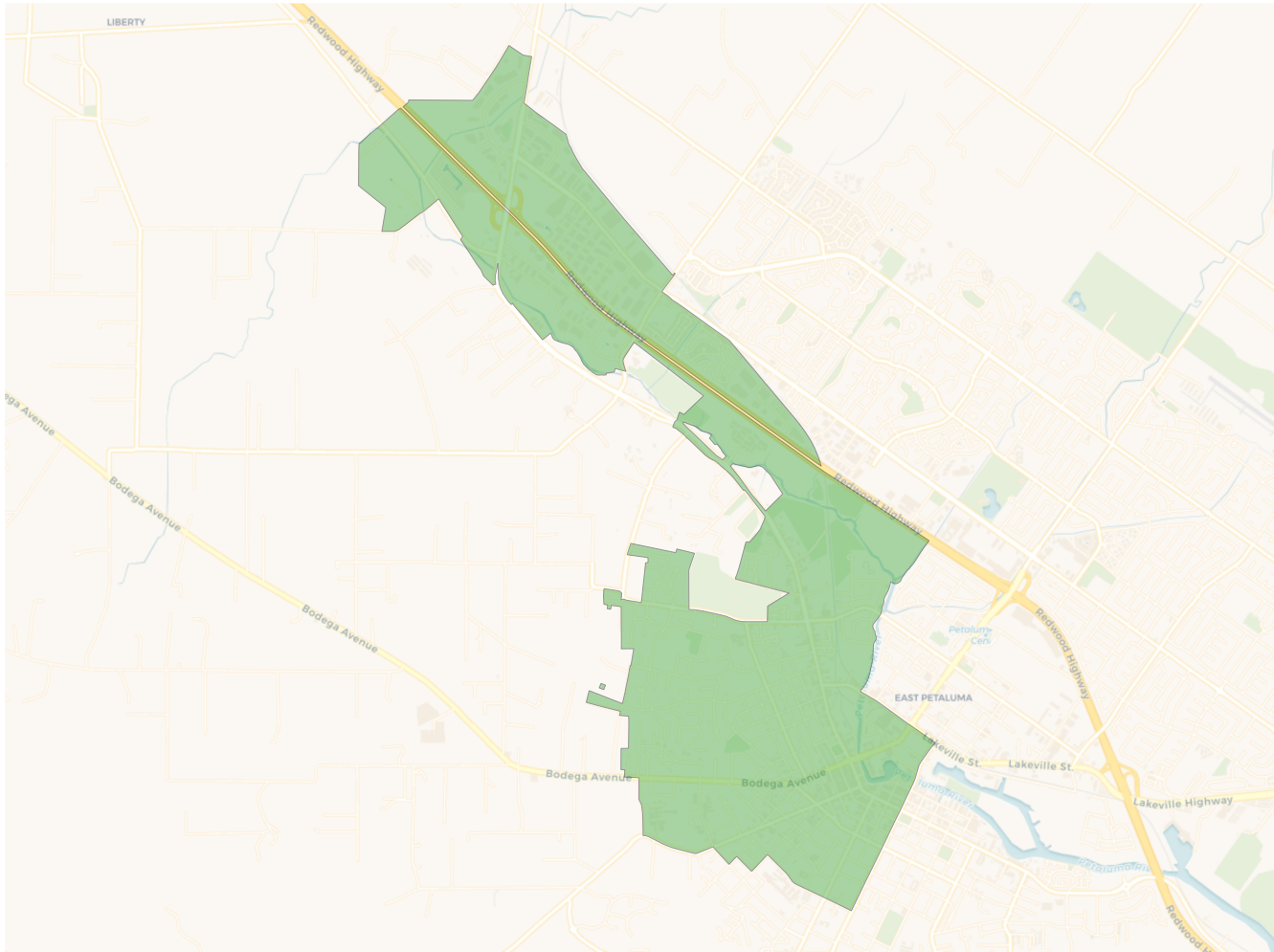


**Citizen Voting Age Population**

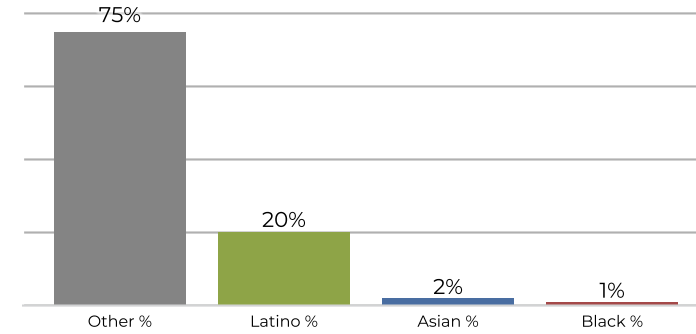


Population	Deviation	Deviation %	Other	Other %	Latino	Latino %	Asian	Asian %	Black	Black %
9,901	-73	-0.7%	8,260	83.4%	1,234	12.5%	337	3.4%	70	0.7%
Total CVAP	Other CVAP	Other CVAP %	Latino CVAP	Latino CVAP %	Asian CVAP	Asian CVAP %	Black CVAP	Black CVAP %		
7,889	6,871	87.1%	681	8.6%	252	3.2%	85	1.1%		

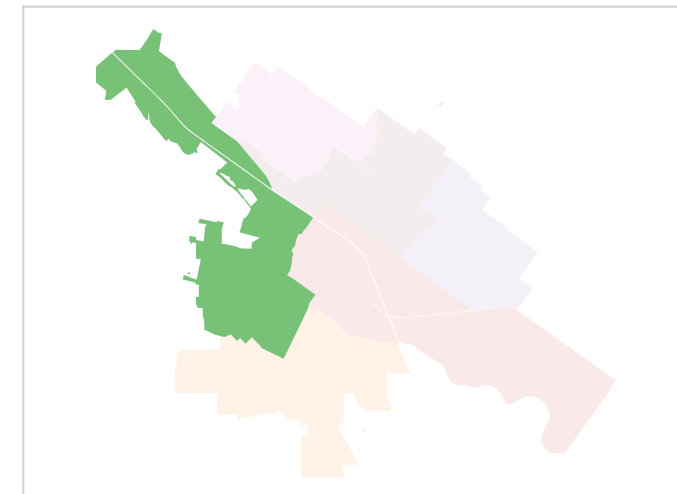
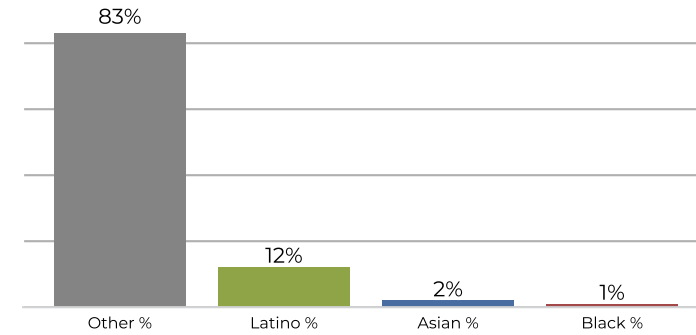
## District 2



## 2020 Census

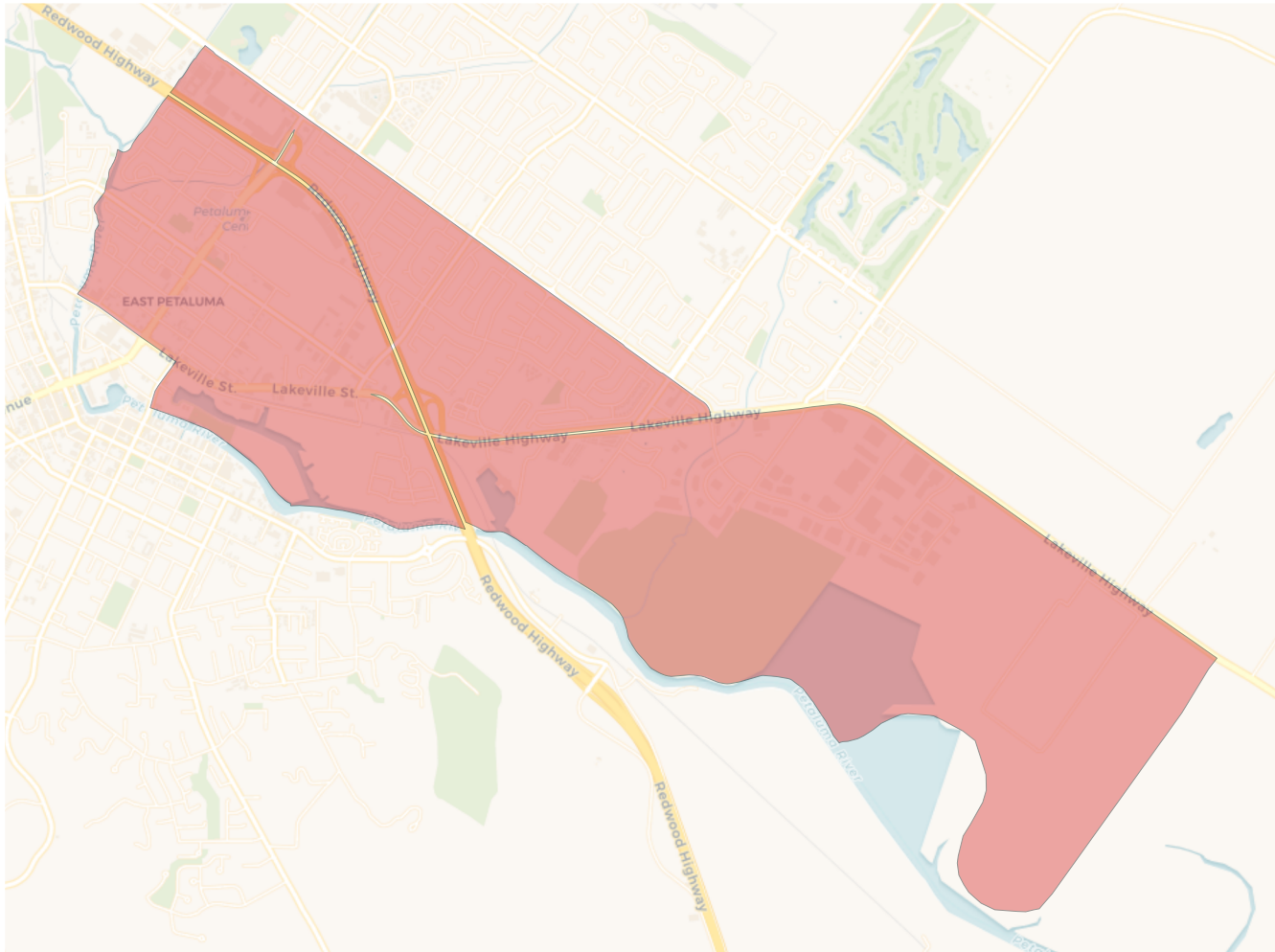


## Citizen Voting Age Population

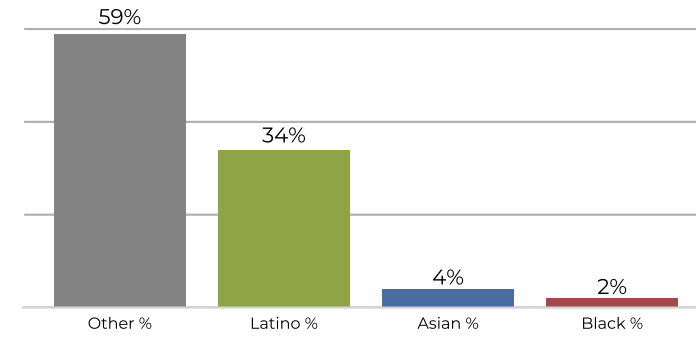


Population	Deviation	Deviation %	Other	Other %	Latino	Latino %	Asian	Asian %	Black	Black %
10,115	141	1.4%	7,674	75.9%	2,062	20.4%	256	2.5%	123	1.2%
Total CVAP	Other CVAP	Other CVAP %	Latino CVAP	Latino CVAP %	Asian CVAP	Asian CVAP %	Black CVAP	Black CVAP %		
7,432	6,219	83.7%	941	12.7%	165	2.2%	107	1.4%		

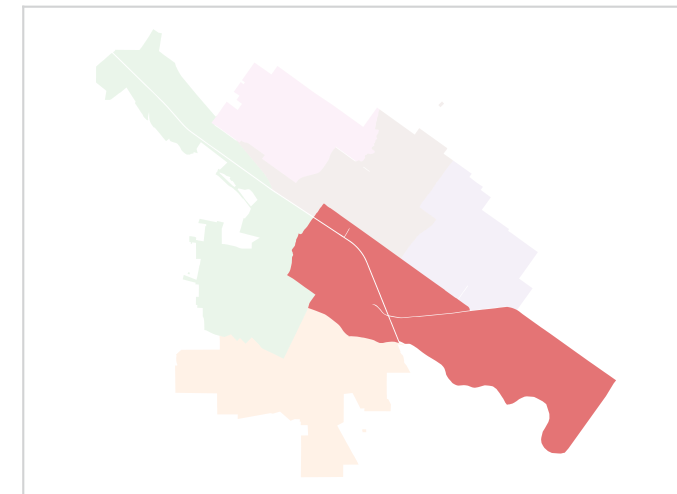
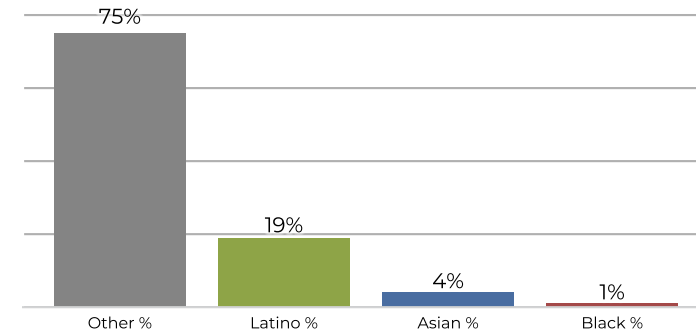
**District 3**



**2020 Census**

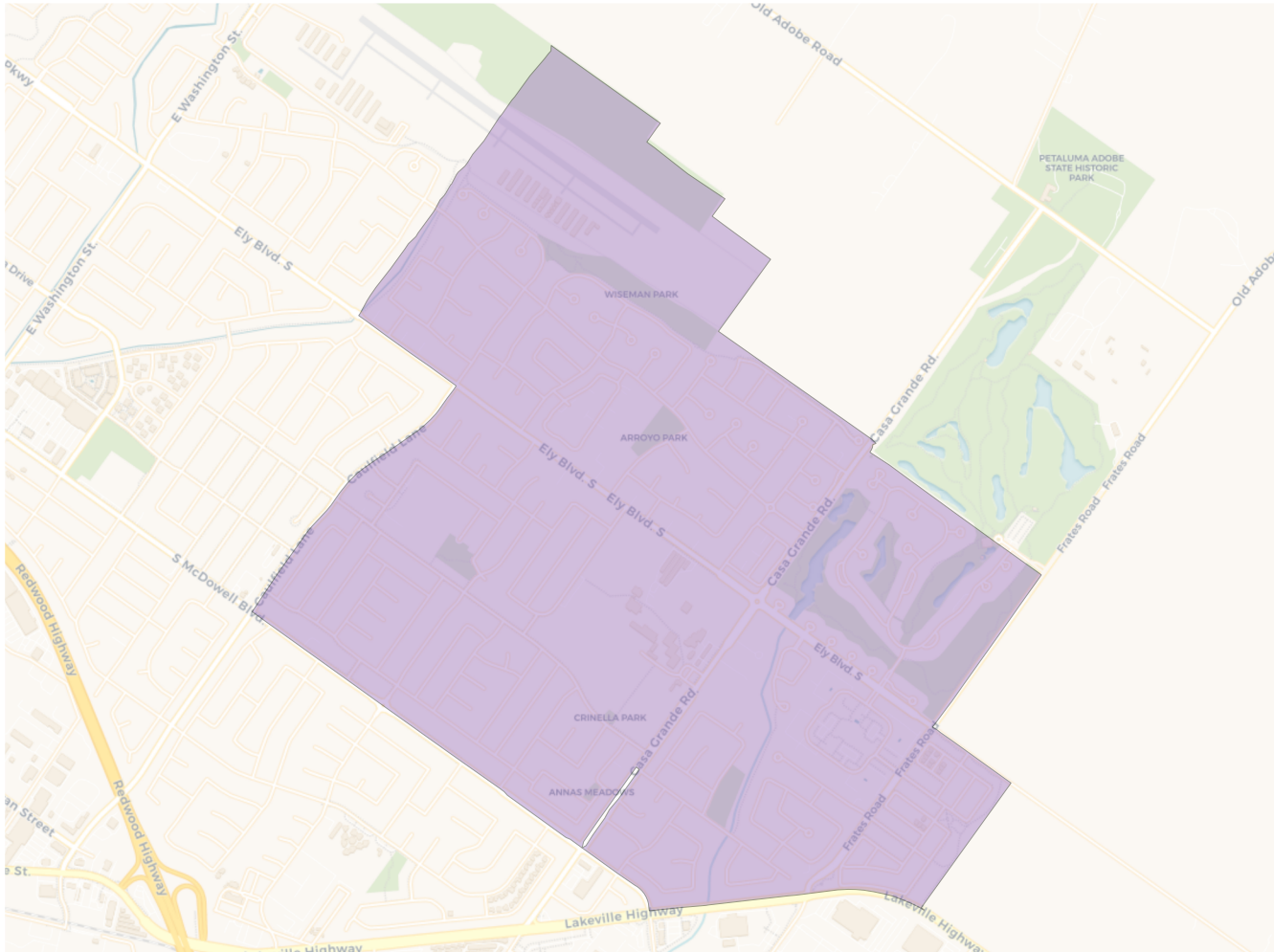


**Citizen Voting Age Population**

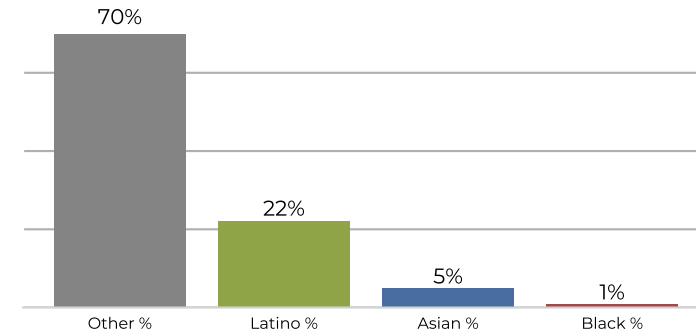


Population	Deviation	Deviation %	Other	Other %	Latino	Latino %	Asian	Asian %	Black	Black %
10,281	307	3.1%	6,088	59.2%	3,547	34.5%	412	4.0%	234	2.3%
Total CVAP	Other CVAP	Other CVAP %	Latino CVAP	Latino CVAP %	Asian CVAP	Asian CVAP %	Black CVAP	Black CVAP %		
6,762	5,090	75.3%	1,298	19.2%	279	4.1%	95	1.4%		

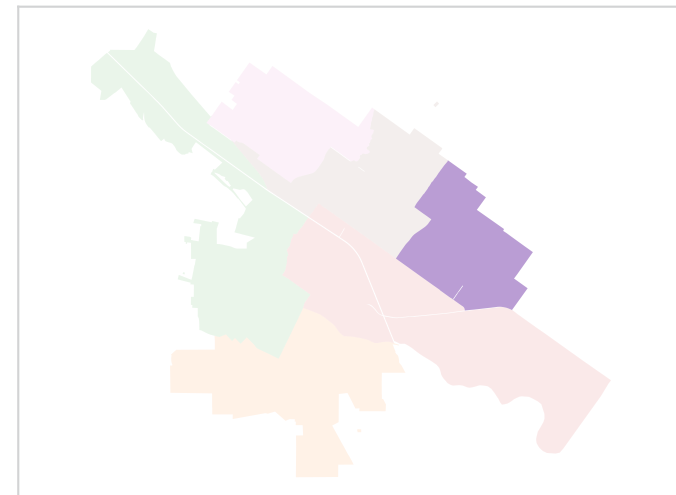
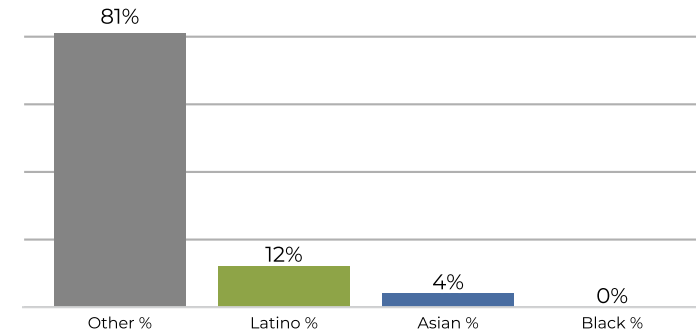
**District 4**



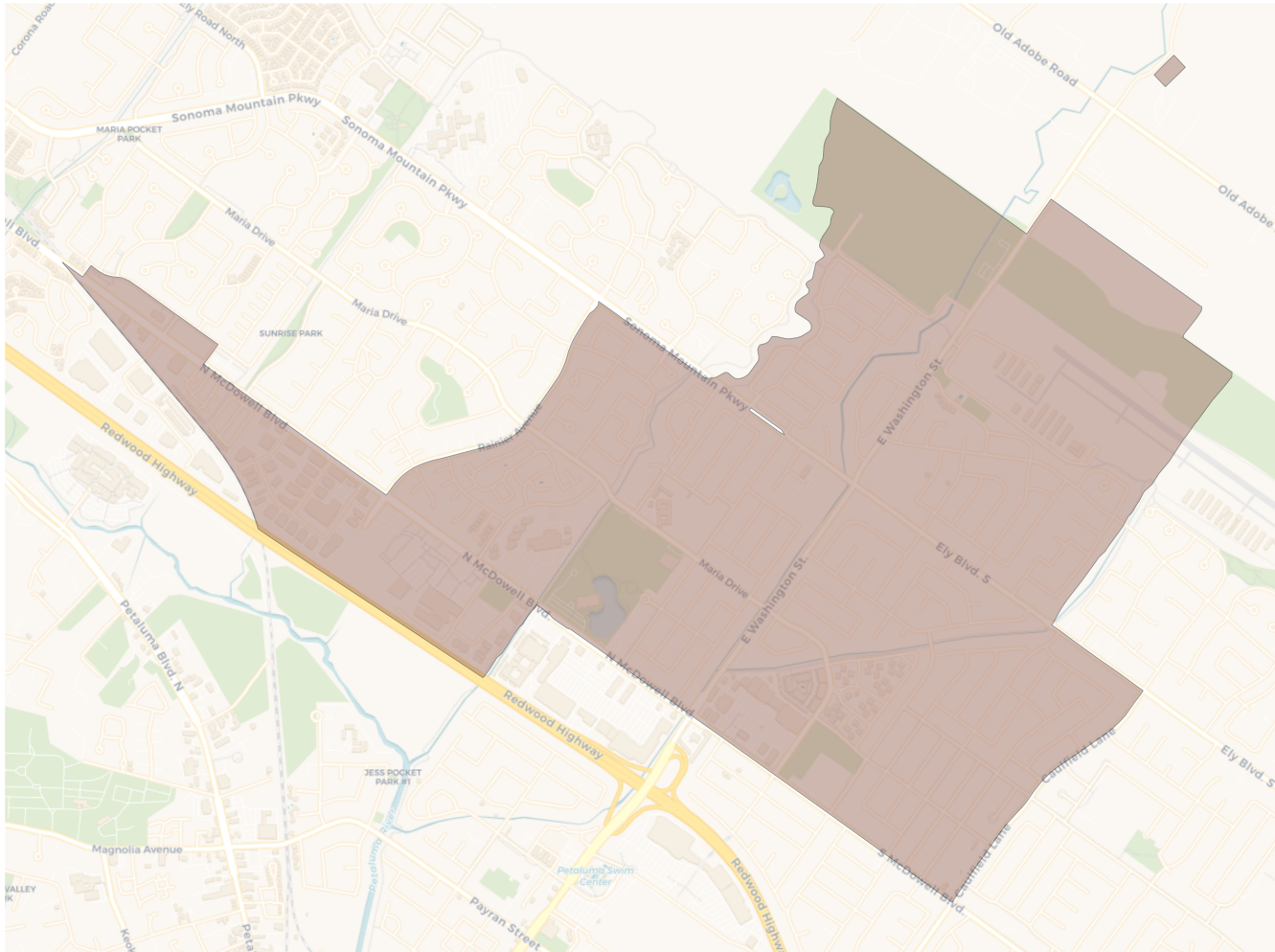
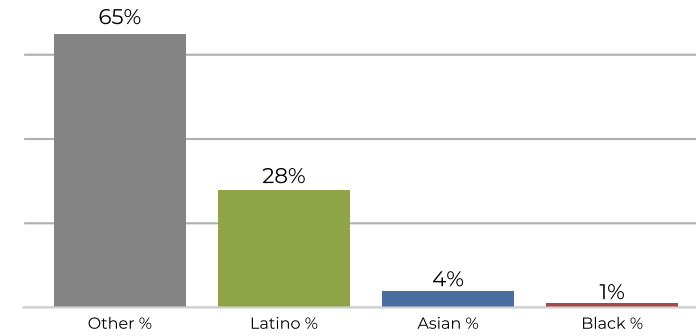
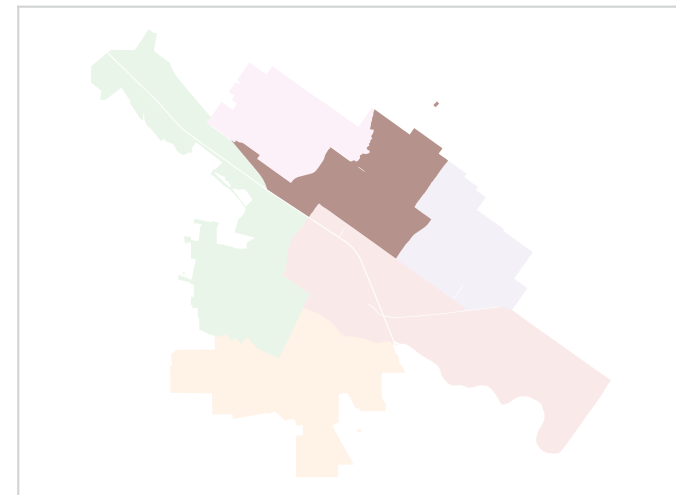
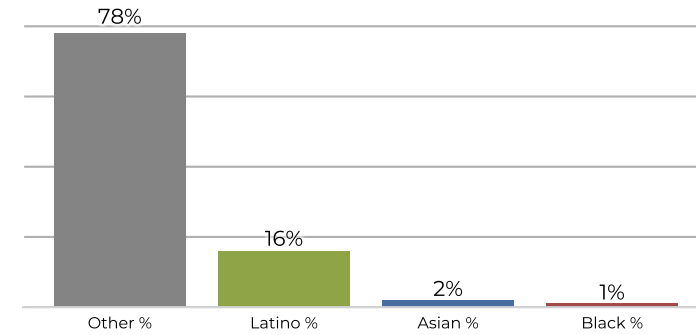
**2020 Census**



**Citizen Voting Age Population**

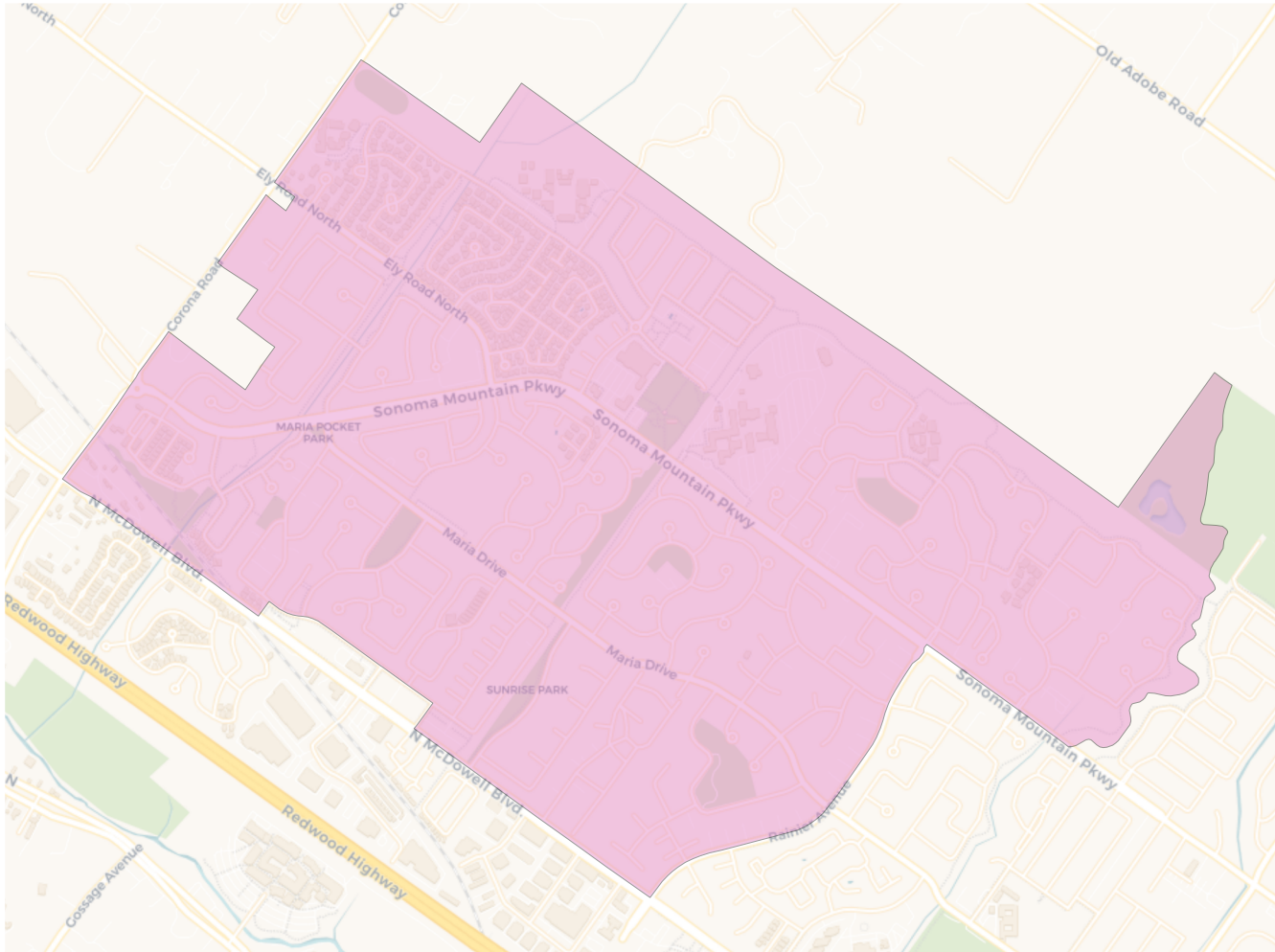


Population	Deviation	Deviation %	Other	Other %	Latino	Latino %	Asian	Asian %	Black	Black %
9,875	-99	-1.0%	6,964	70.5%	2,198	22.3%	579	5.9%	134	1.4%
Total CVAP	Other CVAP	Other CVAP %	Latino CVAP	Latino CVAP %	Asian CVAP	Asian CVAP %	Black CVAP	Black CVAP %		
7,261	5,945	81.9%	924	12.7%	351	4.8%	41	0.6%		

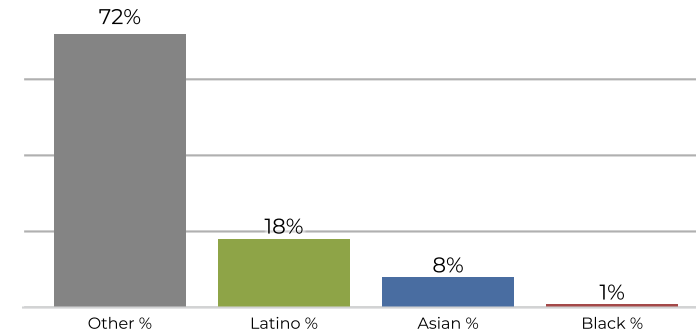
**District 5**

**2020 Census**

**Citizen Voting Age Population**


Population	Deviation	Deviation %	Other	Other %	Latino	Latino %	Asian	Asian %	Black	Black %
9,825	-149	-1.5%	6,477	65.9%	2,806	28.6%	432	4.4%	110	1.1%
Total CVAP	Other CVAP	Other CVAP %	Latino CVAP	Latino CVAP %	Asian CVAP	Asian CVAP %	Black CVAP	Black CVAP %		
7,032	5,549	78.9%	1,170	16.6%	178	2.5%	135	1.9%		

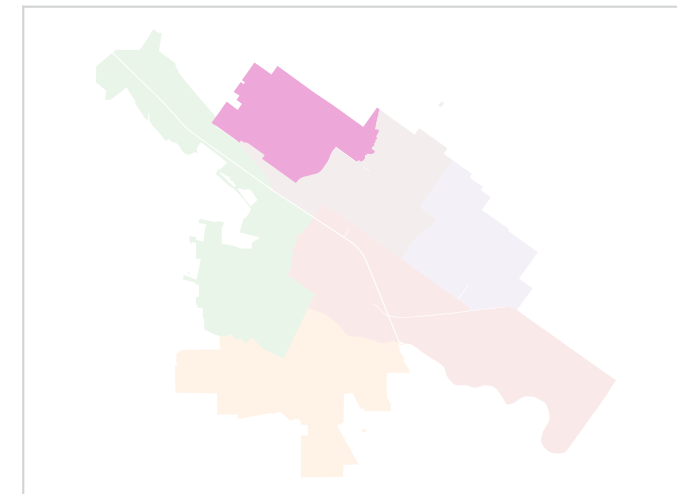
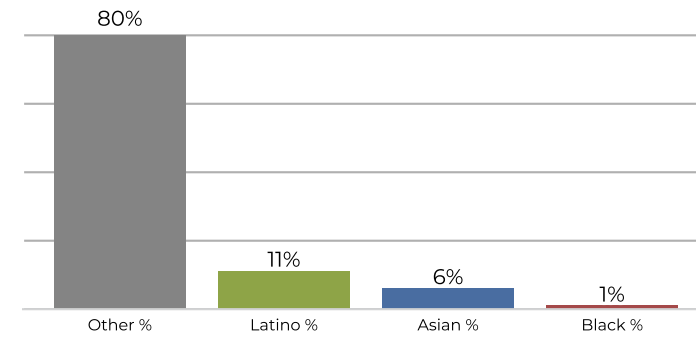
**District 6**



**2020 Census**



**Citizen Voting Age Population**



Population	Deviation	Deviation %	Other	Other %	Latino	Latino %	Asian	Asian %	Black	Black %
9,849	-125	-1.3%	7,151	72.6%	1,787	18.1%	796	8.1%	115	1.2%
Total CVAP	Other CVAP	Other CVAP %	Latino CVAP	Latino CVAP %	Asian CVAP	Asian CVAP %	Black CVAP	Black CVAP %		
6,946	5,608	80.7%	816	11.7%	439	6.3%	83	1.2%		