

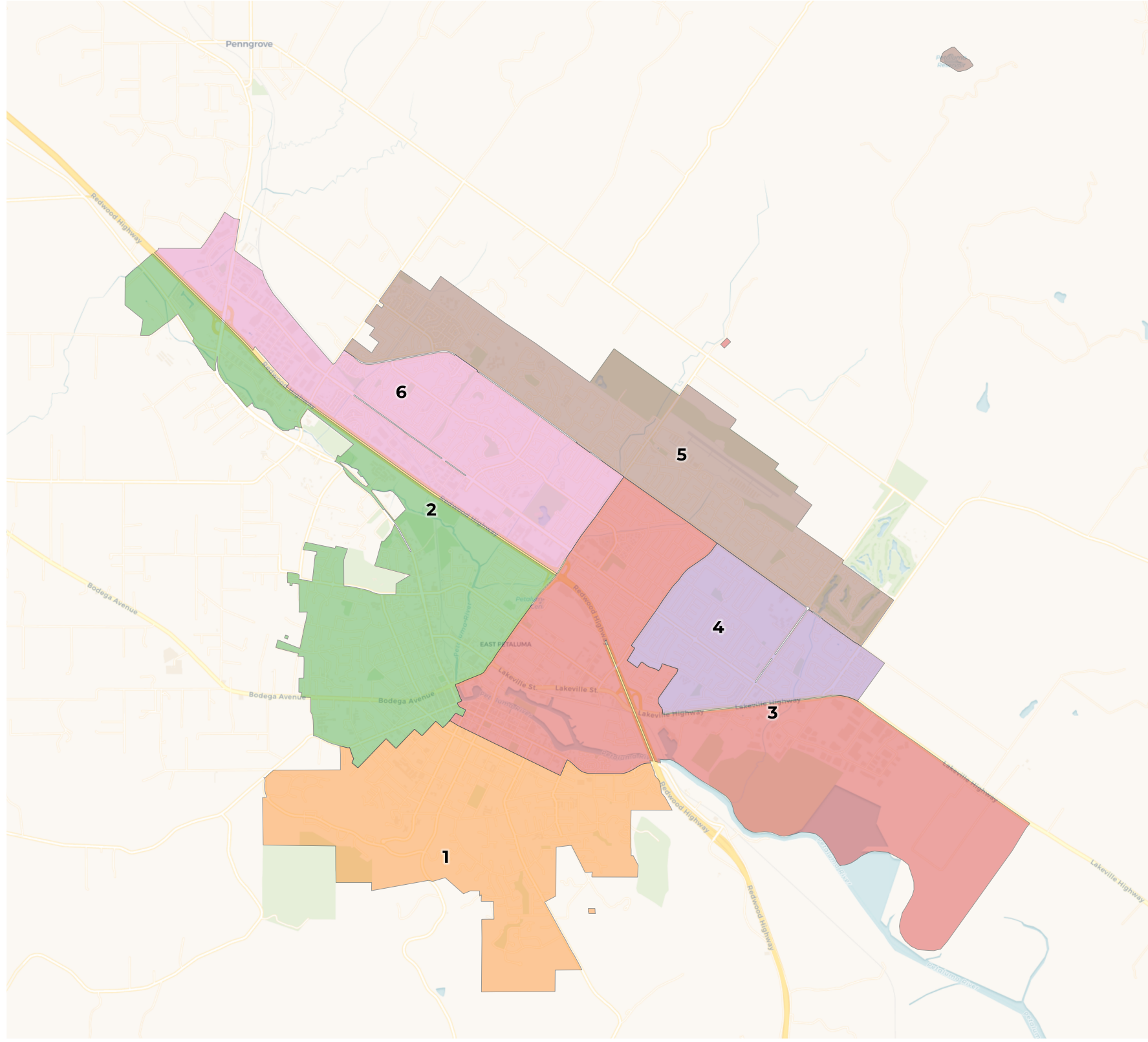


REDISTRICTING PARTNERS

City of Petaluma-Community

Map

Gaylel



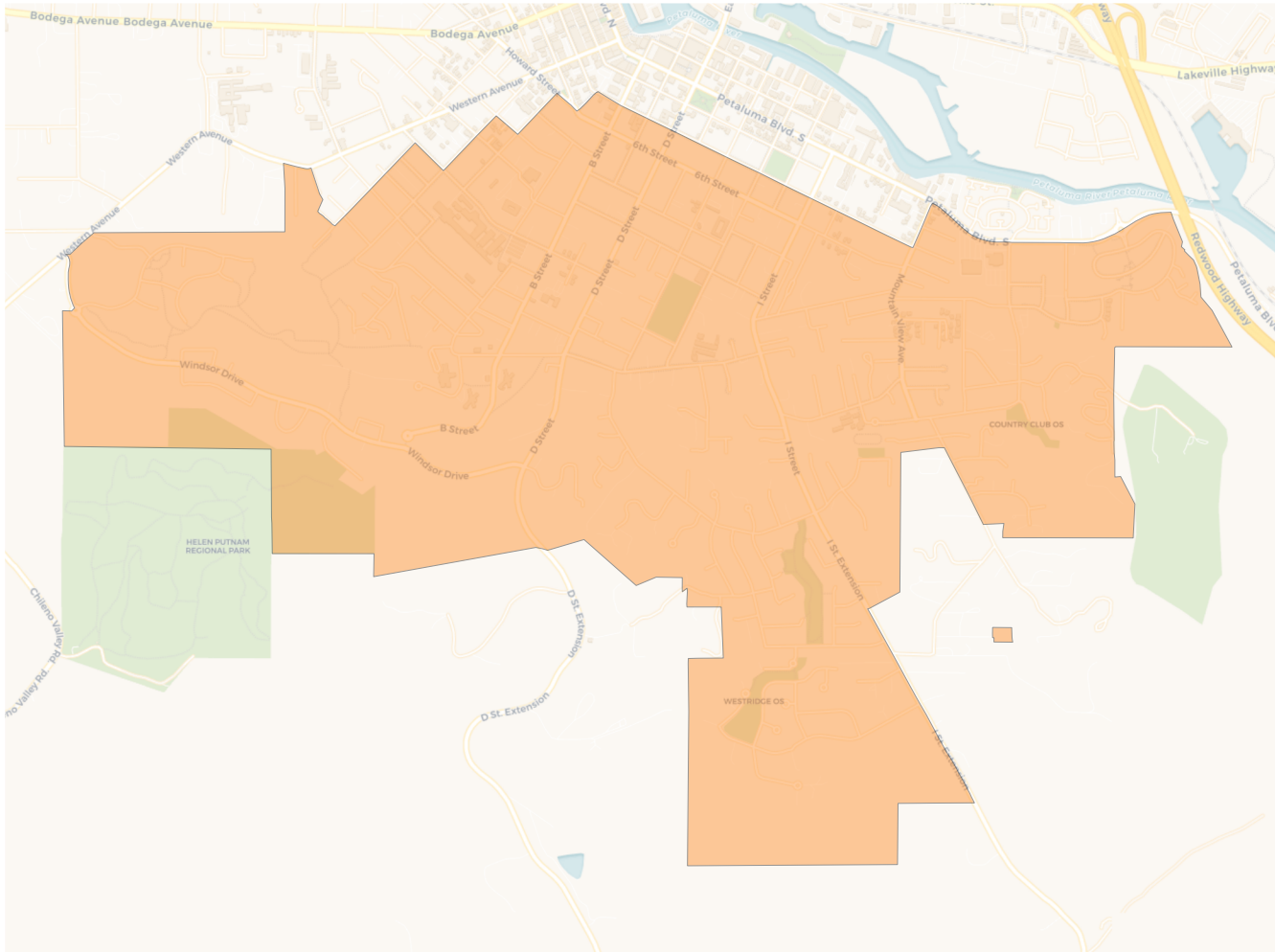
2020 Census

	1	2	3	4	5	6
Population	10,002	9,954	9,921	9,755	10,229	9,985
Deviation	28	-20	-53	-219	255	11
Deviation %	0.3%	-0.2%	-0.5%	-2.2%	2.6%	0.1%
Other	8,256	7,264	6,546	6,045	7,618	6,885
Other %	82.5%	73.0%	66.0%	62.0%	74.5%	69.0%
Latino	1,348	2,338	2,755	3,009	1,743	2,441
Latino %	13.5%	23.5%	27.8%	30.8%	17.0%	24.4%
Asian	318	240	446	499	765	544
Asian %	3.2%	2.4%	4.5%	5.1%	7.5%	5.4%
Black	80	112	174	202	103	115
Black %	0.8%	1.1%	1.8%	2.1%	1.0%	1.2%

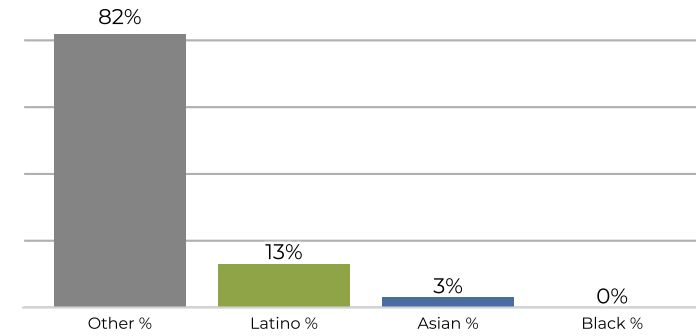
Citizen Voting Age Population (CVAP)

	1	2	3	4	5	6
Total CVAP	7,820	7,060	7,211	6,543	7,923	6,765
Other CVAP	6,779	5,808	5,722	4,981	6,508	5,484
Other CVAP %	86.7%	82.3%	79.4%	76.1%	82.1%	81.1%
Latino CVAP	695	969	1,262	1,130	936	838
Latino CVAP %	8.9%	13.7%	17.5%	17.3%	11.8%	12.4%
Asian CVAP	268	189	157	350	382	318
Asian CVAP %	3.4%	2.7%	2.2%	5.3%	4.8%	4.7%
Black CVAP	78	94	70	82	97	125
Black CVAP %	1.0%	1.3%	1.0%	1.3%	1.2%	1.8%

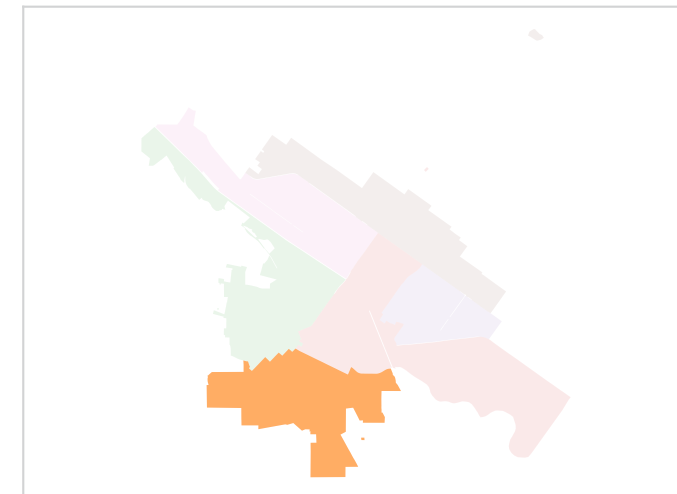
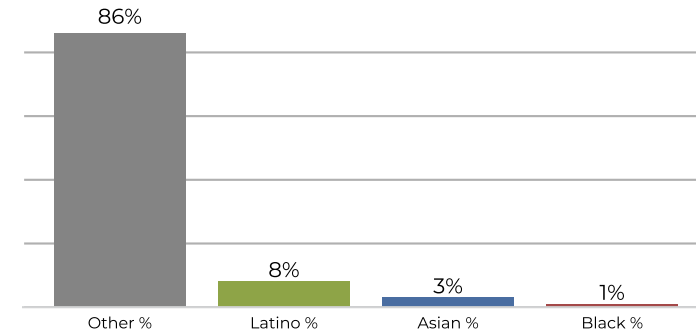
District 1



2020 Census

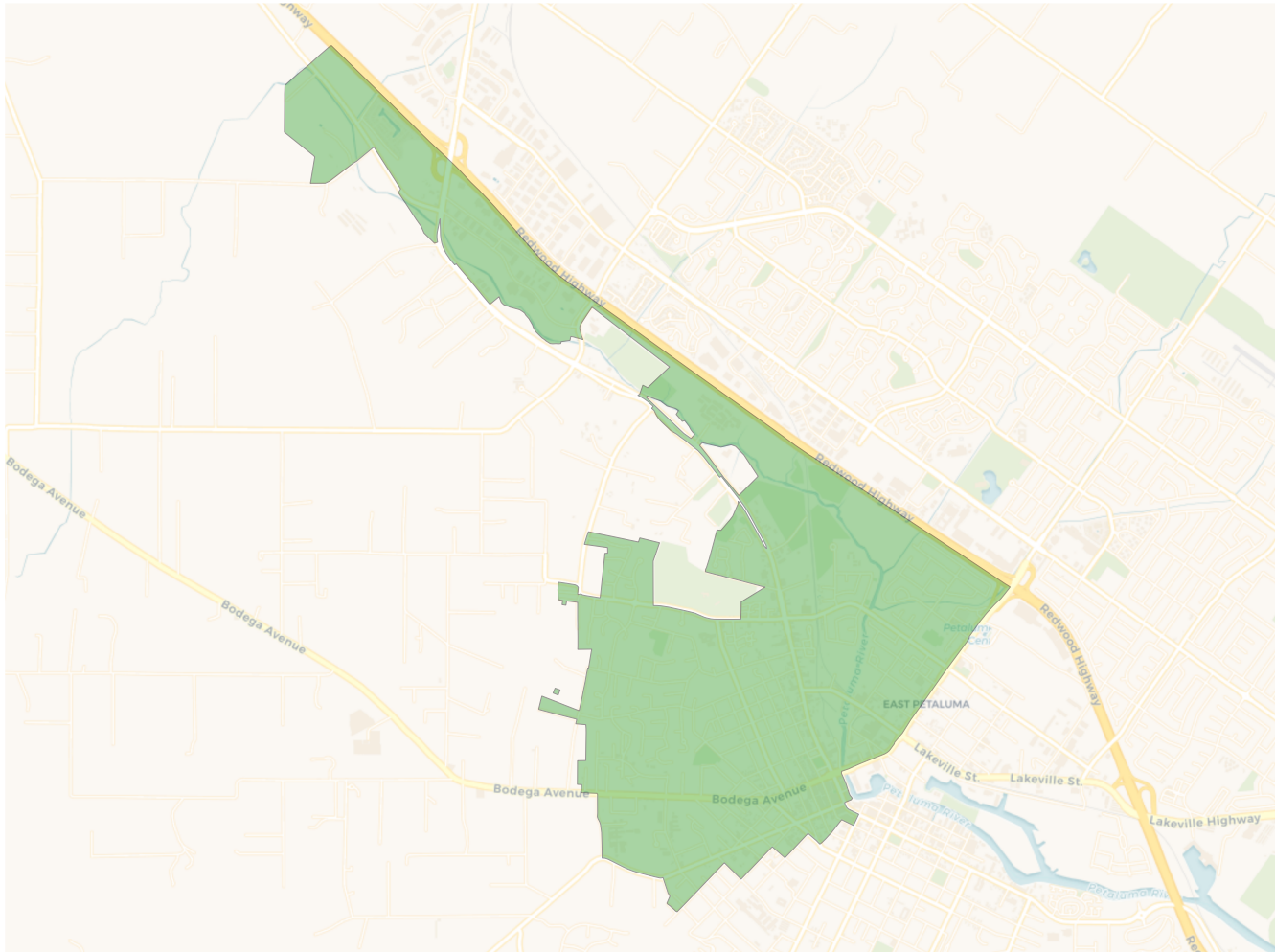


Citizen Voting Age Population

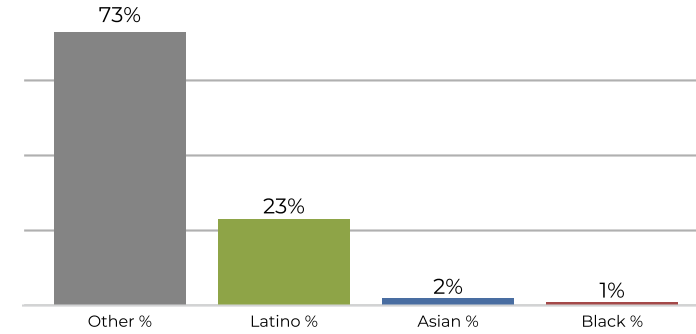


Population	Deviation	Deviation %	Other	Other %	Latino	Latino %	Asian	Asian %	Black	Black %
10,002	28	0.3%	8,256	82.5%	1,348	13.5%	318	3.2%	80	0.8%
Total CVAP	Other CVAP	Other CVAP %	Latino CVAP	Latino CVAP %	Asian CVAP	Asian CVAP %	Black CVAP	Black CVAP %		
7,820	6,779	86.7%	695	8.9%	268	3.4%	78	1.0%		

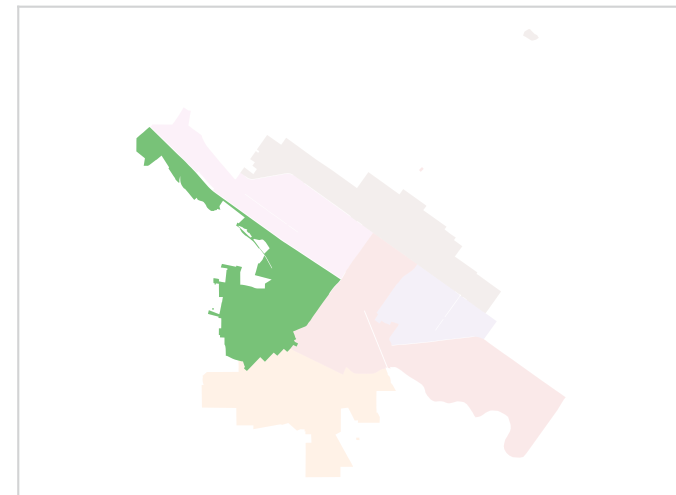
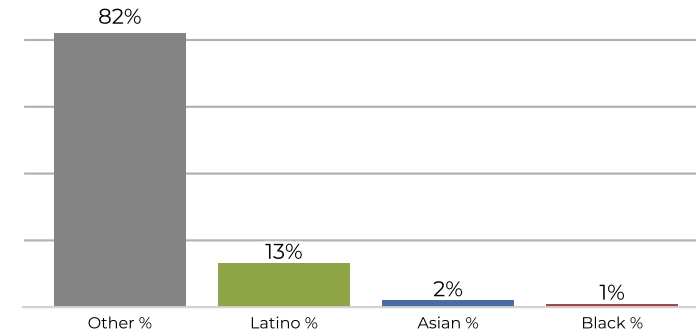
District 2



2020 Census

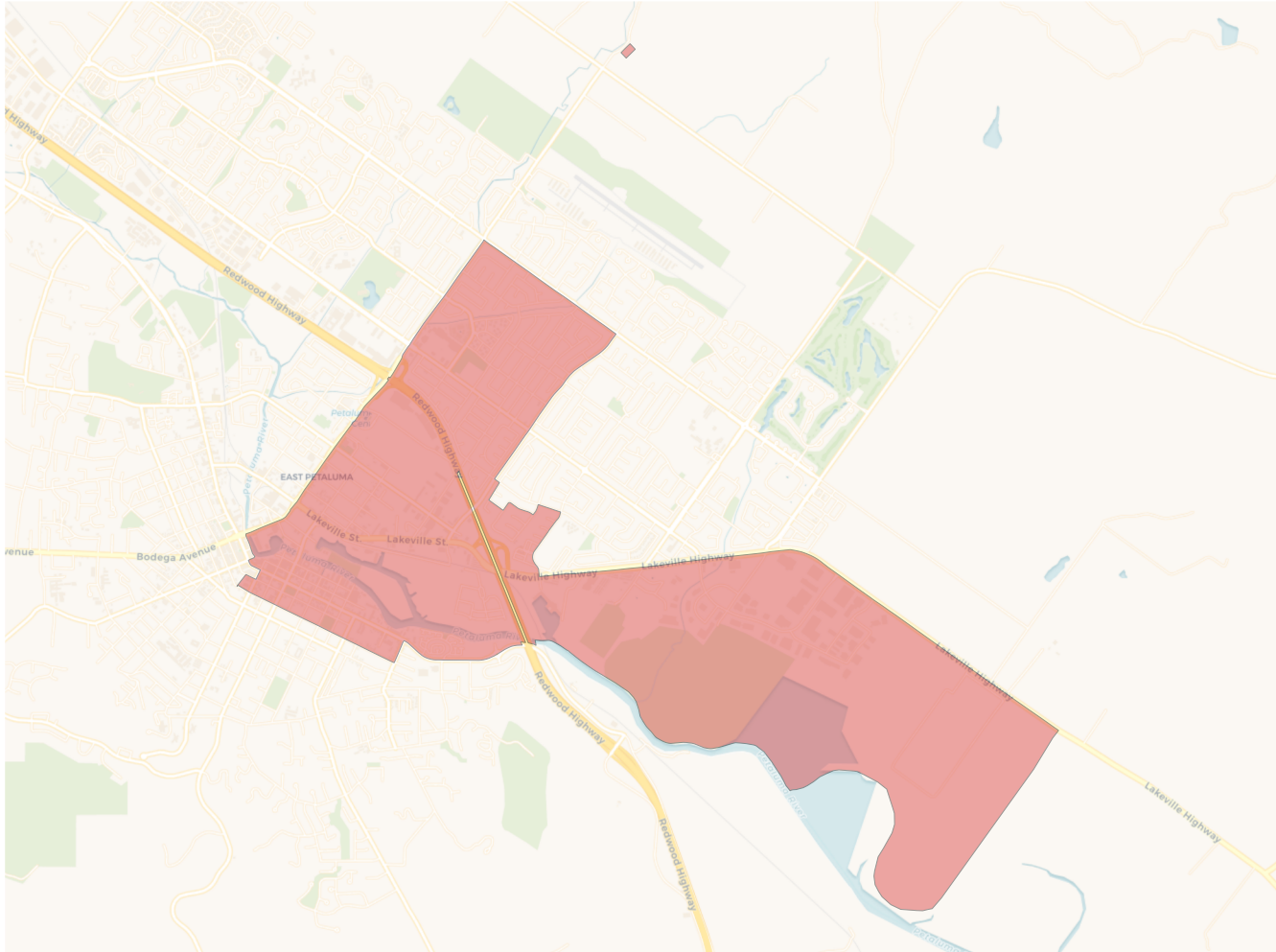


Citizen Voting Age Population

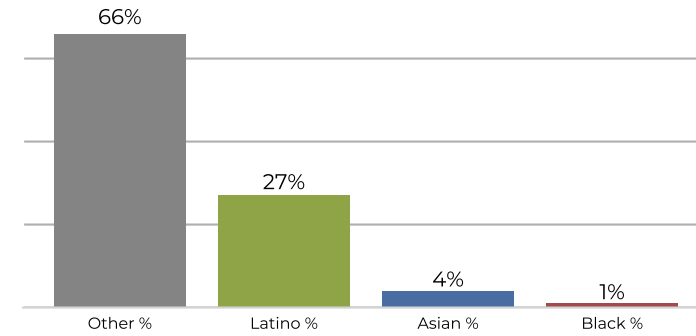


Population	Deviation	Deviation %	Other	Other %	Latino	Latino %	Asian	Asian %	Black	Black %
9,954	-20	-0.2%	7,264	73.0%	2,338	23.5%	240	2.4%	112	1.1%
Total CVAP	Other CVAP	Other CVAP %	Latino CVAP	Latino CVAP %	Asian CVAP	Asian CVAP %	Black CVAP	Black CVAP %		
7,060	5,808	82.3%	969	13.7%	189	2.7%	94	1.3%		

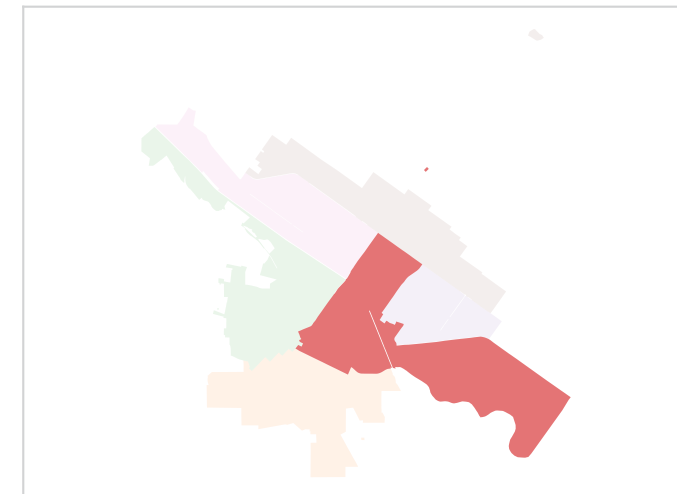
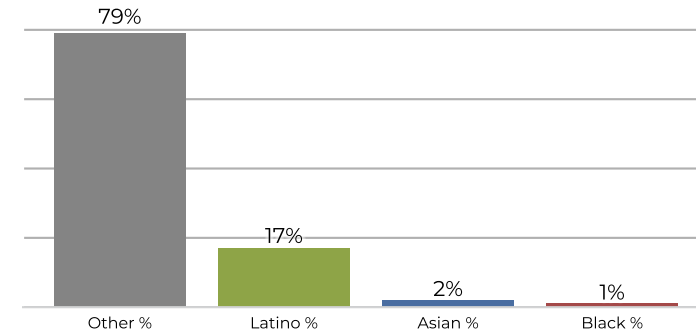
District 3



2020 Census

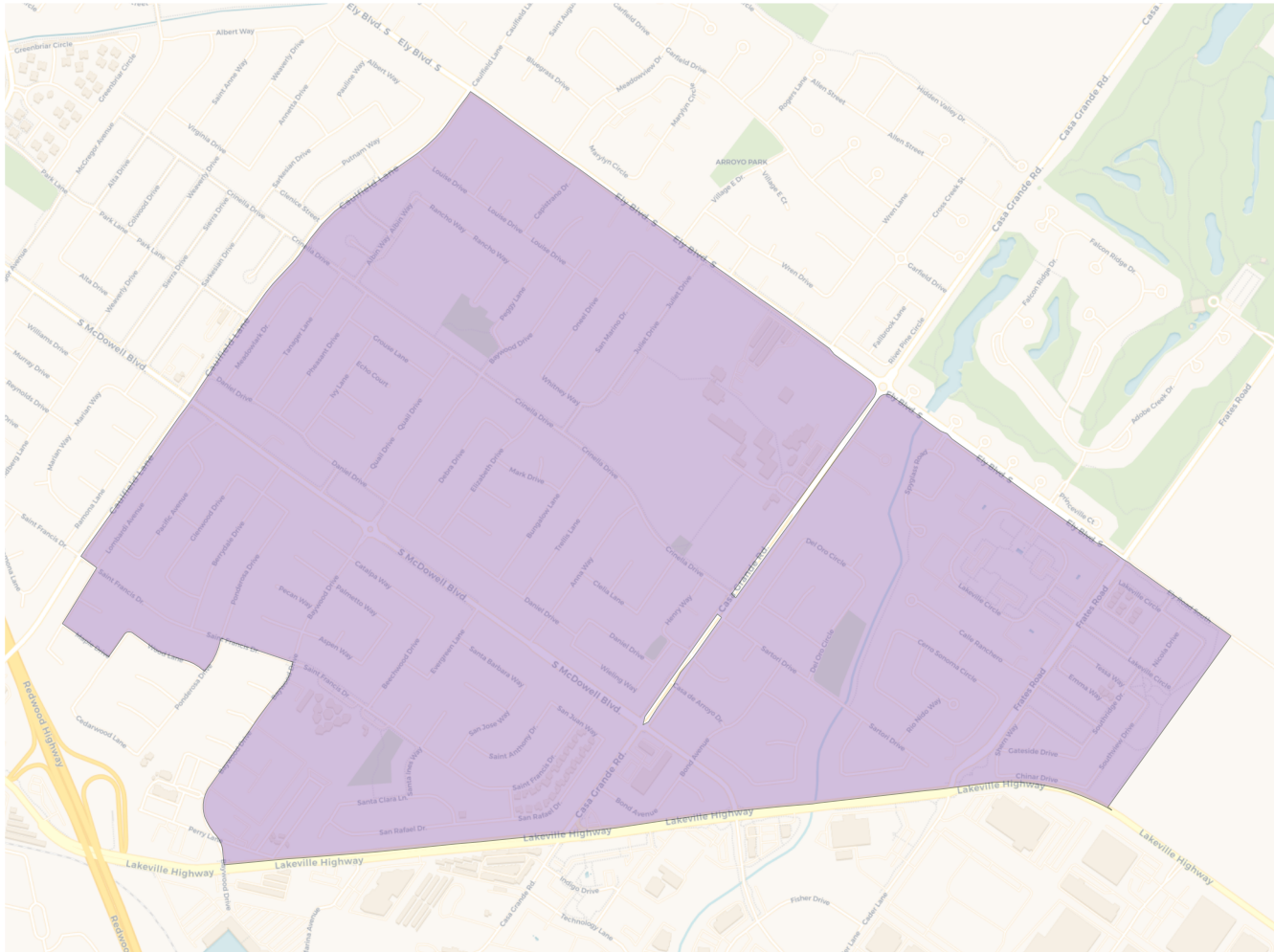


Citizen Voting Age Population

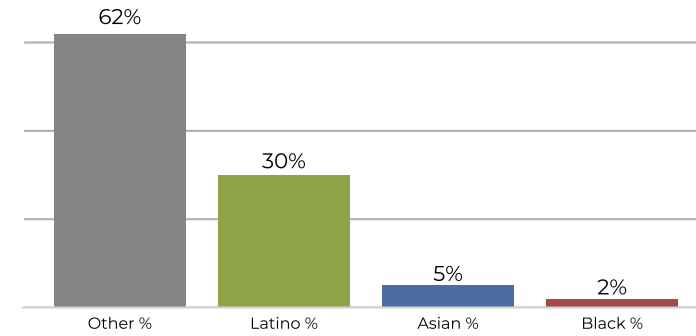


Population	Deviation	Deviation %	Other	Other %	Latino	Latino %	Asian	Asian %	Black	Black %
9,921	-53	-0.5%	6,546	66.0%	2,755	27.8%	446	4.5%	174	1.8%
Total CVAP	Other CVAP	Other CVAP %	Latino CVAP	Latino CVAP %	Asian CVAP	Asian CVAP %	Black CVAP	Black CVAP %		
7,211	5,722	79.4%	1,262	17.5%	157	2.2%	70	1.0%		

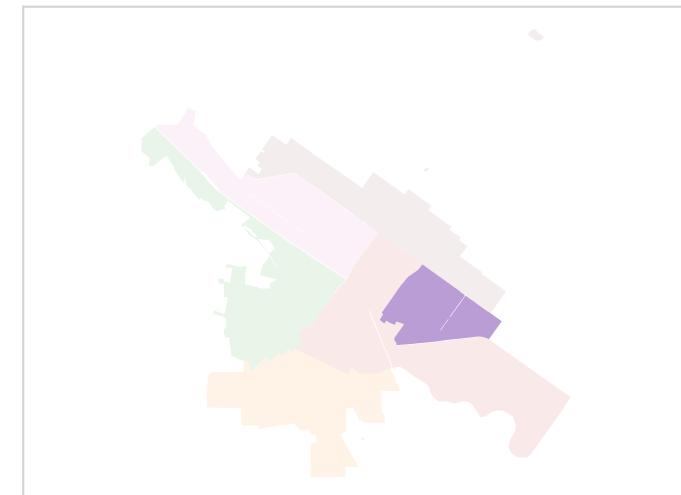
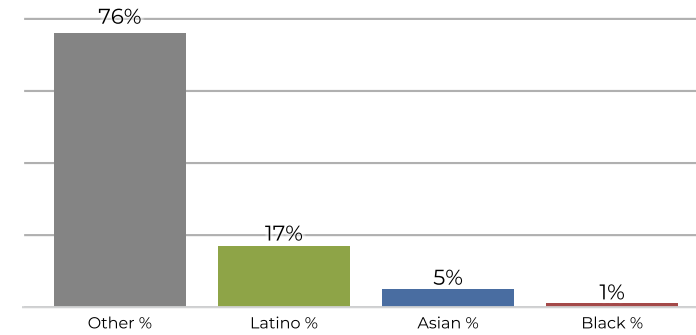
District 4



2020 Census

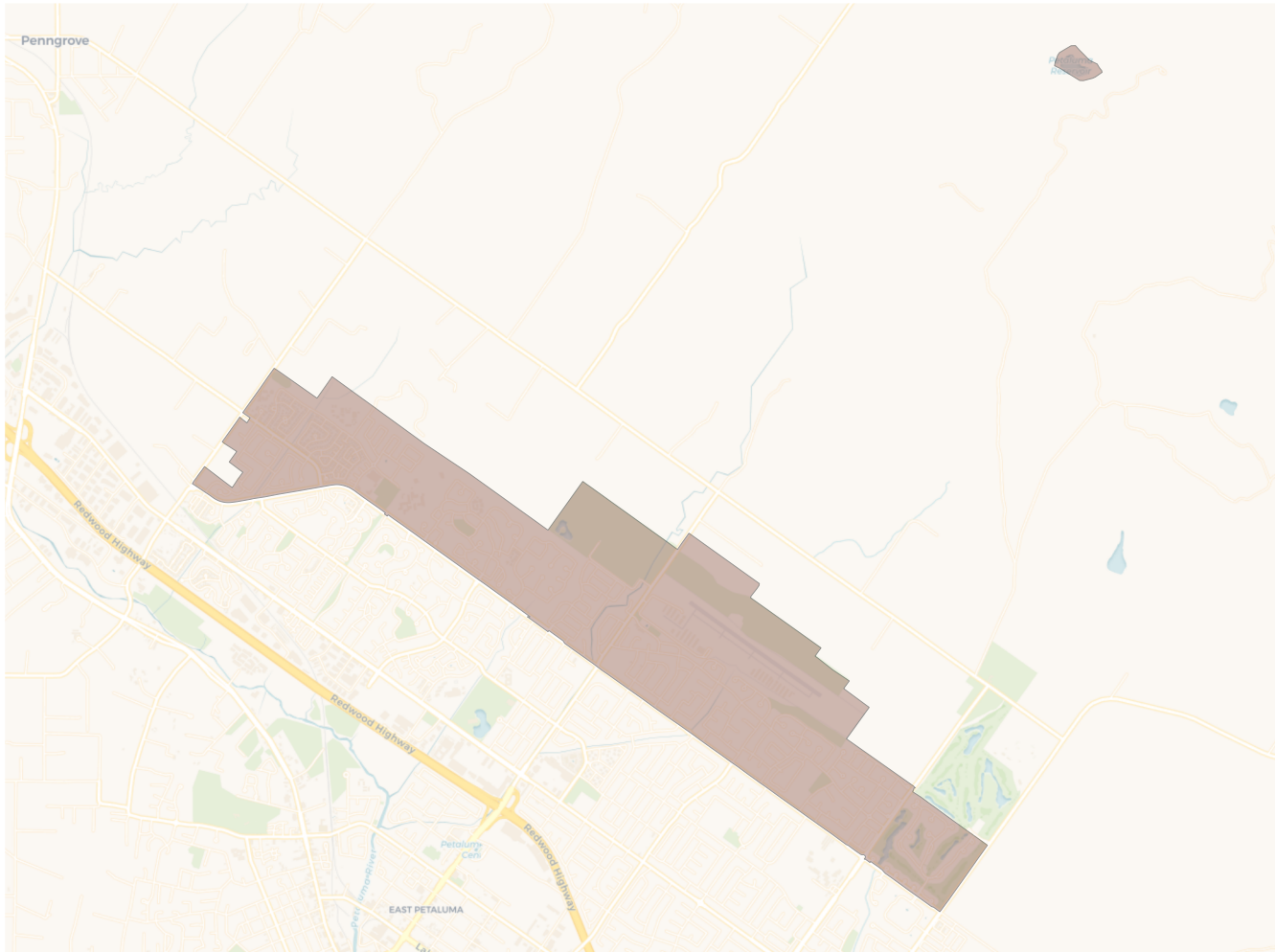


Citizen Voting Age Population

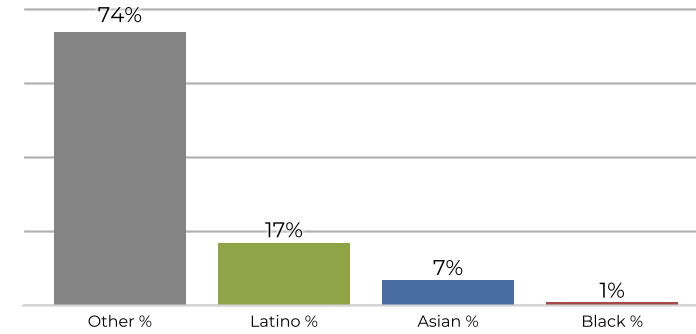


Population	Deviation	Deviation %	Other	Other %	Latino	Latino %	Asian	Asian %	Black	Black %
9,755	-219	-2.2%	6,045	62.0%	3,009	30.8%	499	5.1%	202	2.1%
Total CVAP	Other CVAP	Other CVAP %	Latino CVAP	Latino CVAP %	Asian CVAP	Asian CVAP %	Black CVAP	Black CVAP %		
6,543	4,981	76.1%	1,130	17.3%	350	5.3%	82	1.3%		

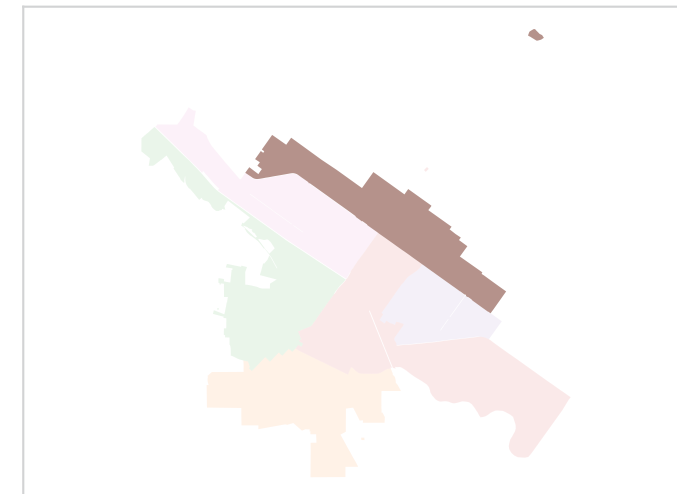
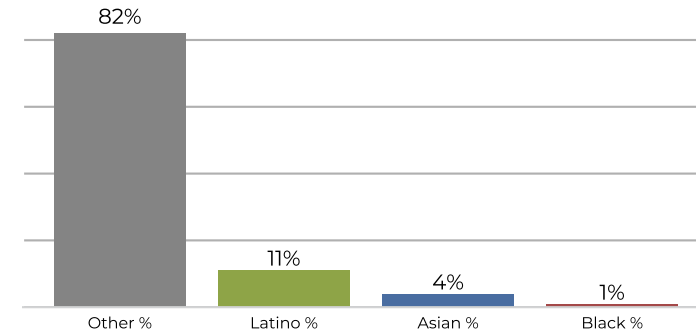
District 5



2020 Census

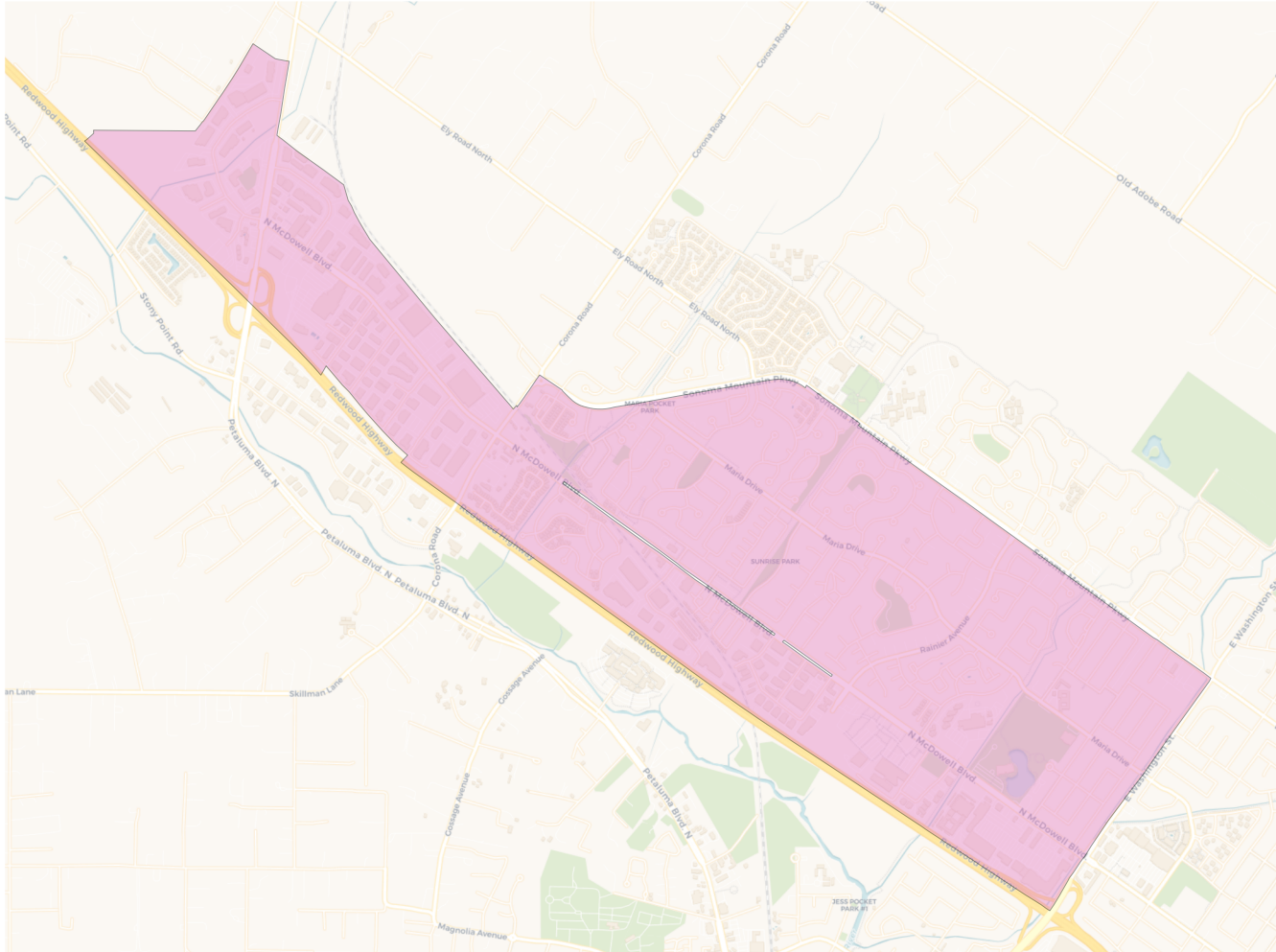


Citizen Voting Age Population

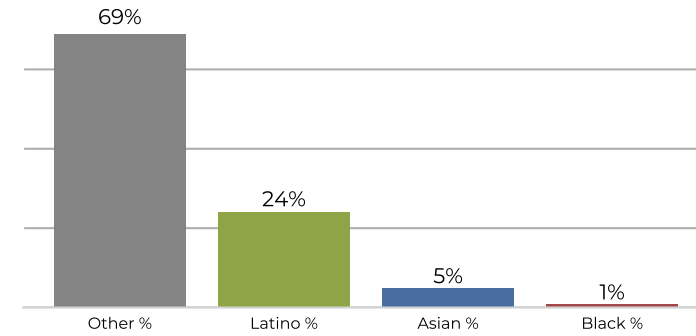


Population	Deviation	Deviation %	Other	Other %	Latino	Latino %	Asian	Asian %	Black	Black %
10,229	255	2.6%	7,618	74.5%	1,743	17.0%	765	7.5%	103	1.0%
Total CVAP	Other CVAP	Other CVAP %	Latino CVAP	Latino CVAP %	Asian CVAP	Asian CVAP %	Black CVAP	Black CVAP %		
7,923	6,508	82.1%	936	11.8%	382	4.8%	97	1.2%		

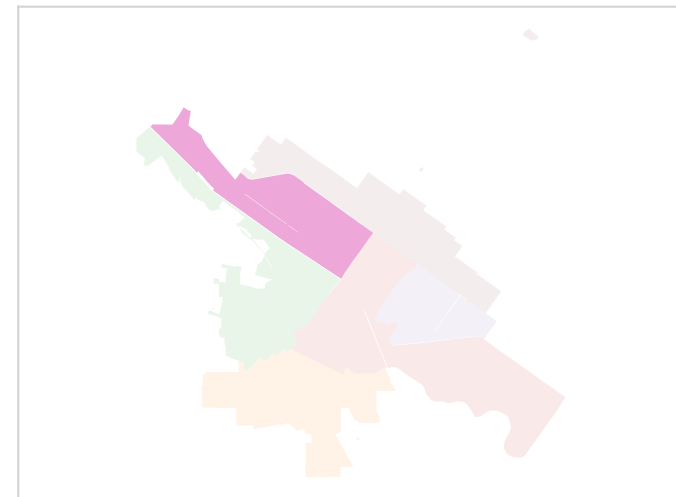
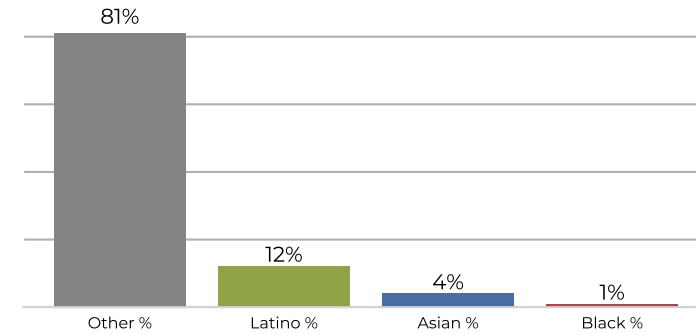
District 6



2020 Census



Citizen Voting Age Population



Population	Deviation	Deviation %	Other	Other %	Latino	Latino %	Asian	Asian %	Black	Black %
9,985	11	0.1%	6,885	69.0%	2,441	24.4%	544	5.4%	115	1.2%
Total CVAP	Other CVAP	Other CVAP %	Latino CVAP	Latino CVAP %	Asian CVAP	Asian CVAP %	Black CVAP	Black CVAP %		
6,765	5,484	81.1%	838	12.4%	318	4.7%	125	1.8%		