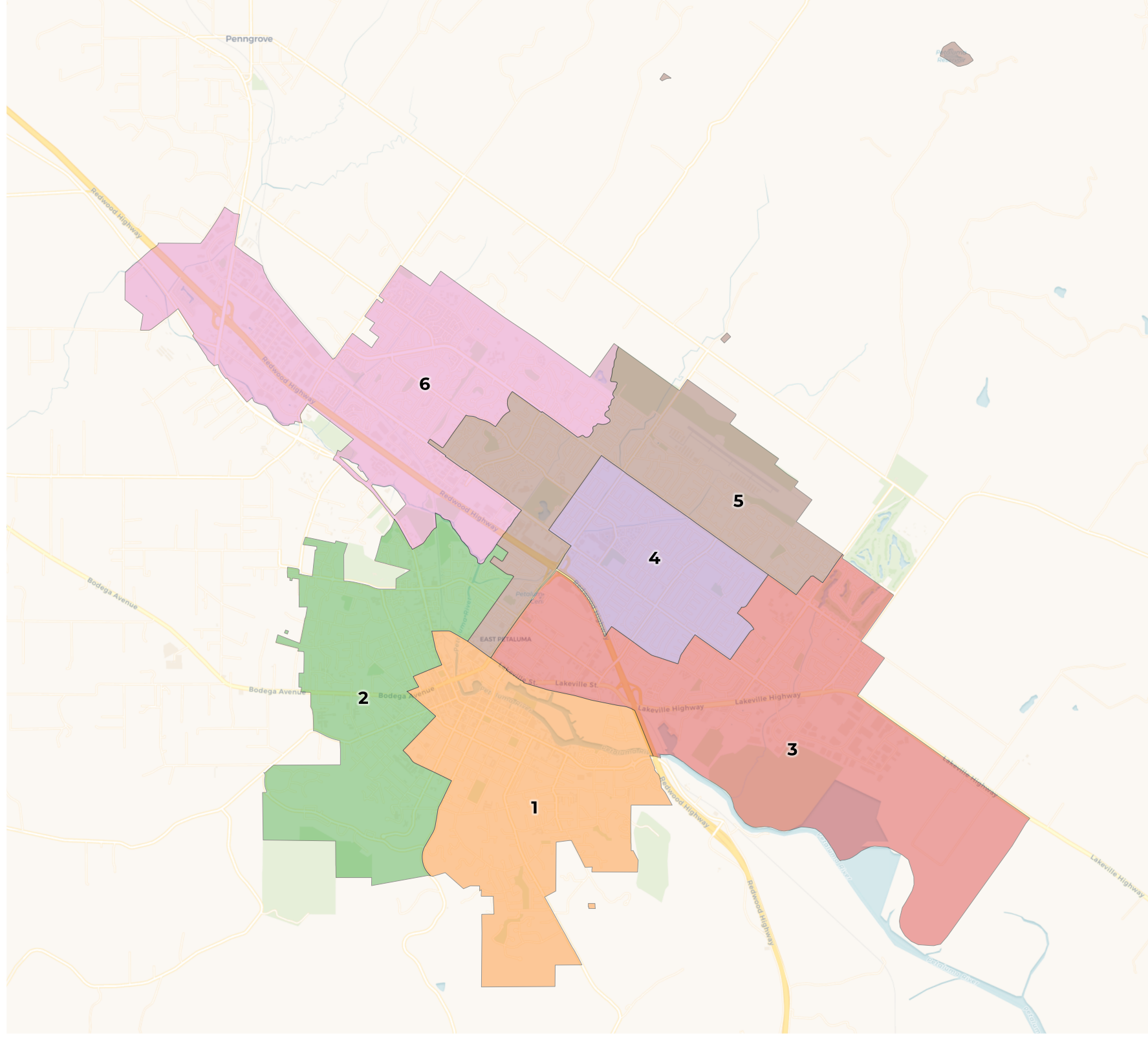




# REDISTRICTING PARTNERS

## City of Petaluma-Community Map

Kevin-B-15Dec



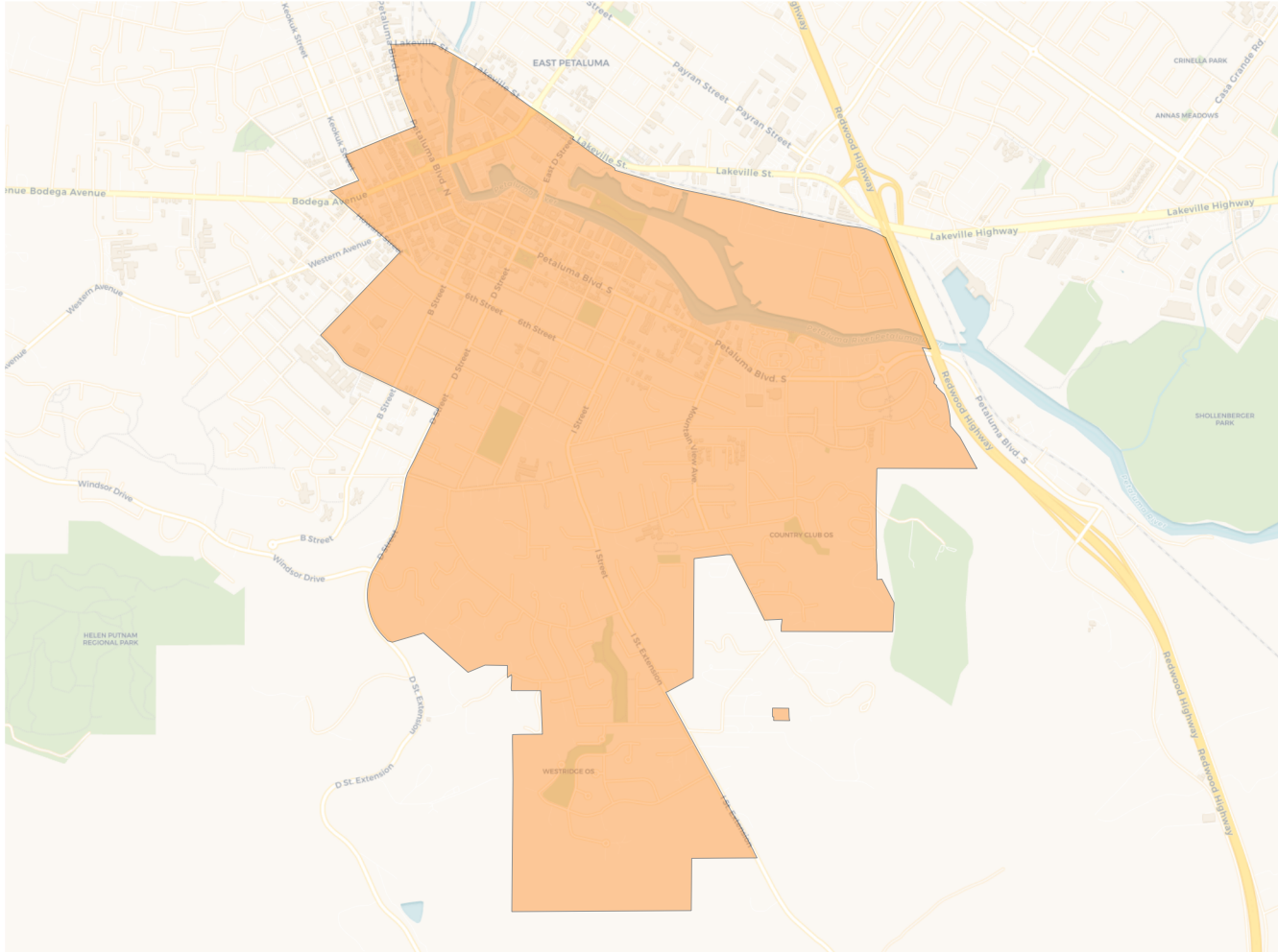
**2020 Census**

	1	2	3	4	5	6
Population	9,896	10,070	10,064	9,886	9,930	10,000
Deviation	-78	96	90	-88	-44	26
Deviation %	-0.8%	1.0%	0.9%	-0.9%	-0.4%	0.3%
Other	7,905	7,966	6,054	6,511	7,210	6,968
Other %	79.9%	79.1%	60.2%	65.9%	72.6%	69.7%
Latino	1,554	1,761	3,215	2,806	2,136	2,162
Latino %	15.7%	17.5%	31.9%	28.4%	21.5%	21.6%
Asian	327	262	556	438	495	734
Asian %	3.3%	2.6%	5.5%	4.4%	5.0%	7.3%
Black	110	81	239	131	89	136
Black %	1.1%	0.8%	2.4%	1.3%	0.9%	1.4%

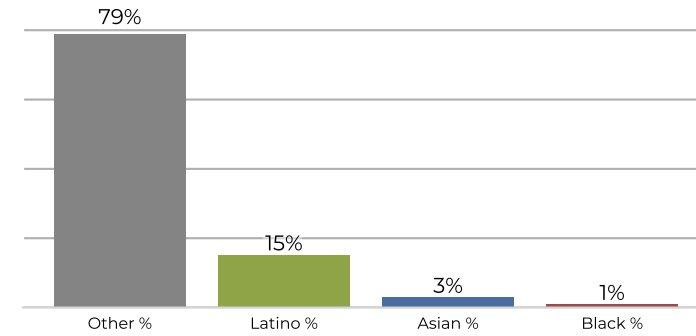
**Citizen Voting Age Population (CVAP)**

	1	2	3	4	5	6
Total CVAP	7,319	7,821	6,350	7,489	7,325	7,018
Other CVAP	6,261	6,660	4,794	5,938	6,014	5,615
Other CVAP %	85.5%	85.2%	75.5%	79.3%	82.1%	80.0%
Latino CVAP	760	868	1,122	1,307	901	872
Latino CVAP %	10.4%	11.1%	17.7%	17.5%	12.3%	12.4%
Asian CVAP	201	207	329	204	283	440
Asian CVAP %	2.7%	2.6%	5.2%	2.7%	3.9%	6.3%
Black CVAP	97	86	105	40	127	91
Black CVAP %	1.3%	1.1%	1.7%	0.5%	1.7%	1.3%

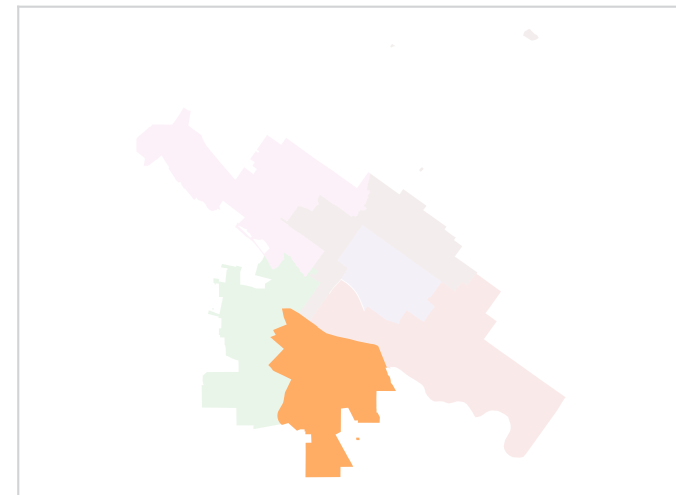
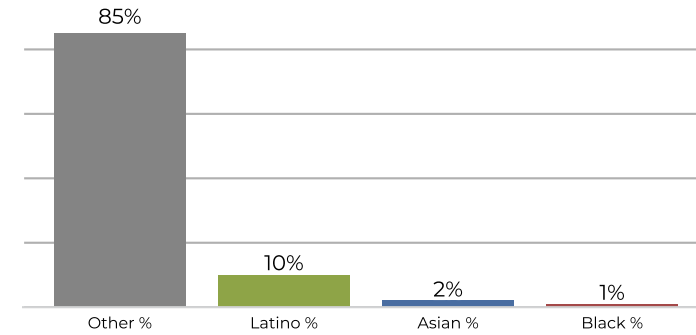
**District 1**



**2020 Census**

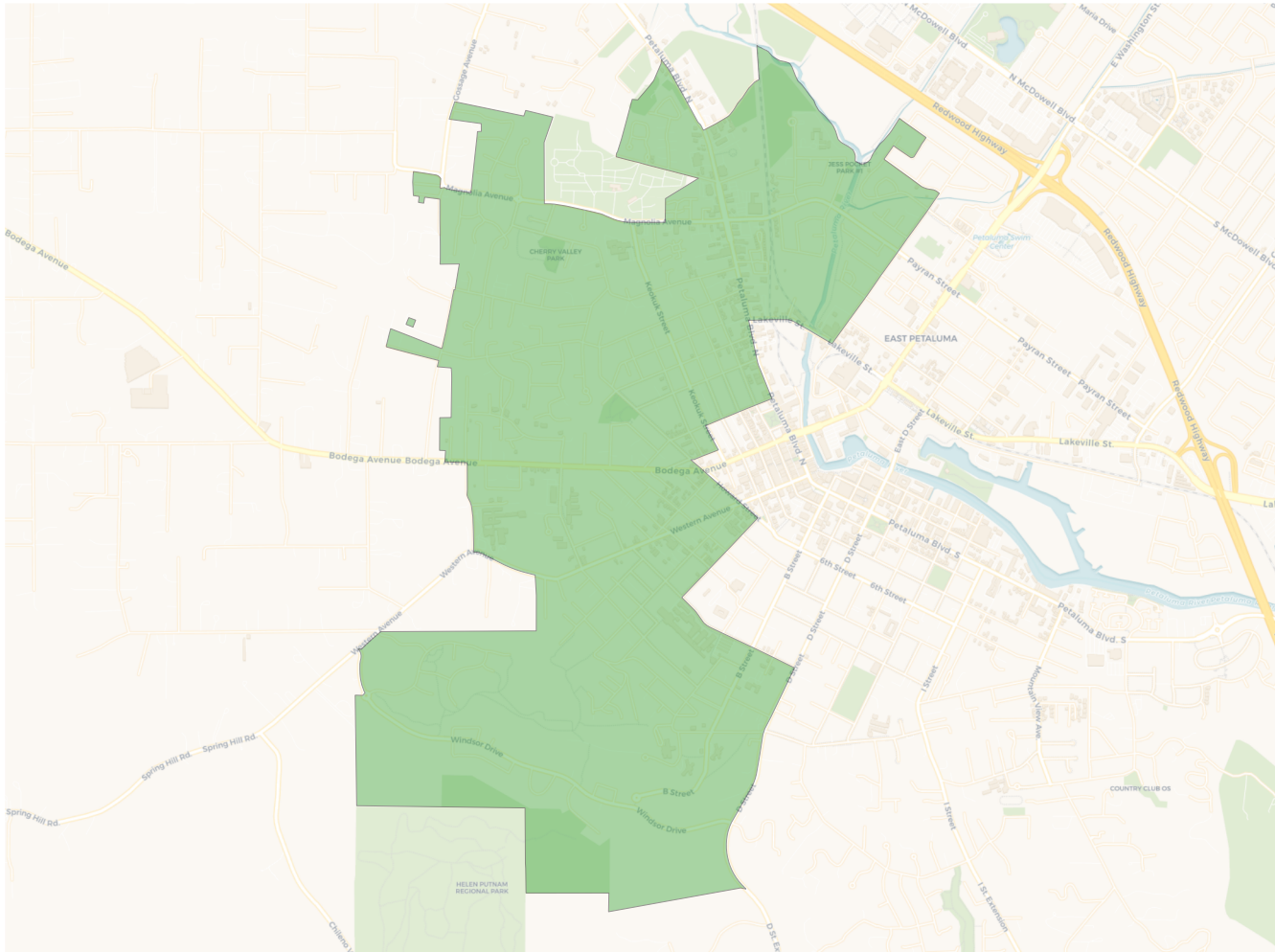


**Citizen Voting Age Population**

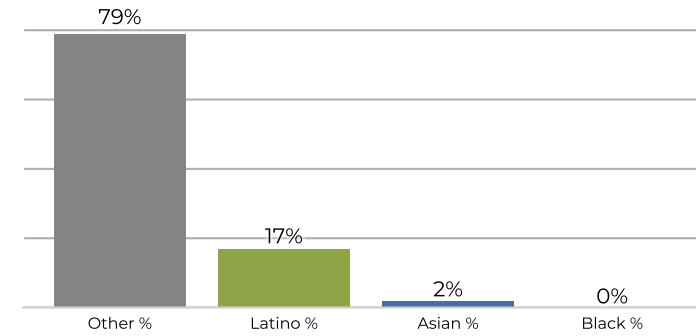


Population	Deviation	Deviation %	Other	Other %	Latino	Latino %	Asian	Asian %	Black	Black %
9,896	-78	-0.8%	7,905	79.9%	1,554	15.7%	327	3.3%	110	1.1%
Total CVAP	Other CVAP	Other CVAP %	Latino CVAP	Latino CVAP %	Asian CVAP	Asian CVAP %	Black CVAP	Black CVAP %		
7,319	6,261	85.5%	760	10.4%	201	2.7%	97	1.3%		

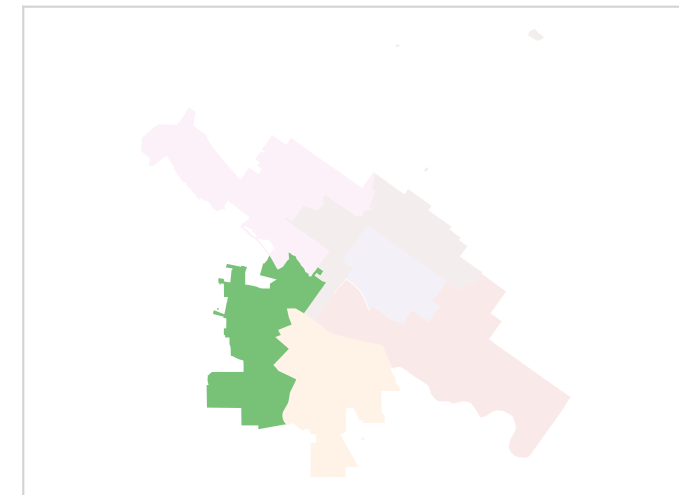
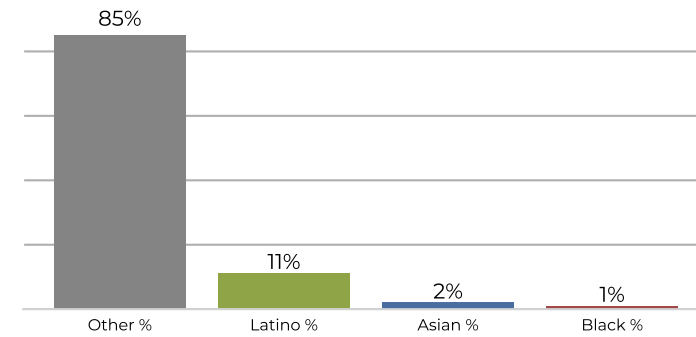
**District 2**



**2020 Census**

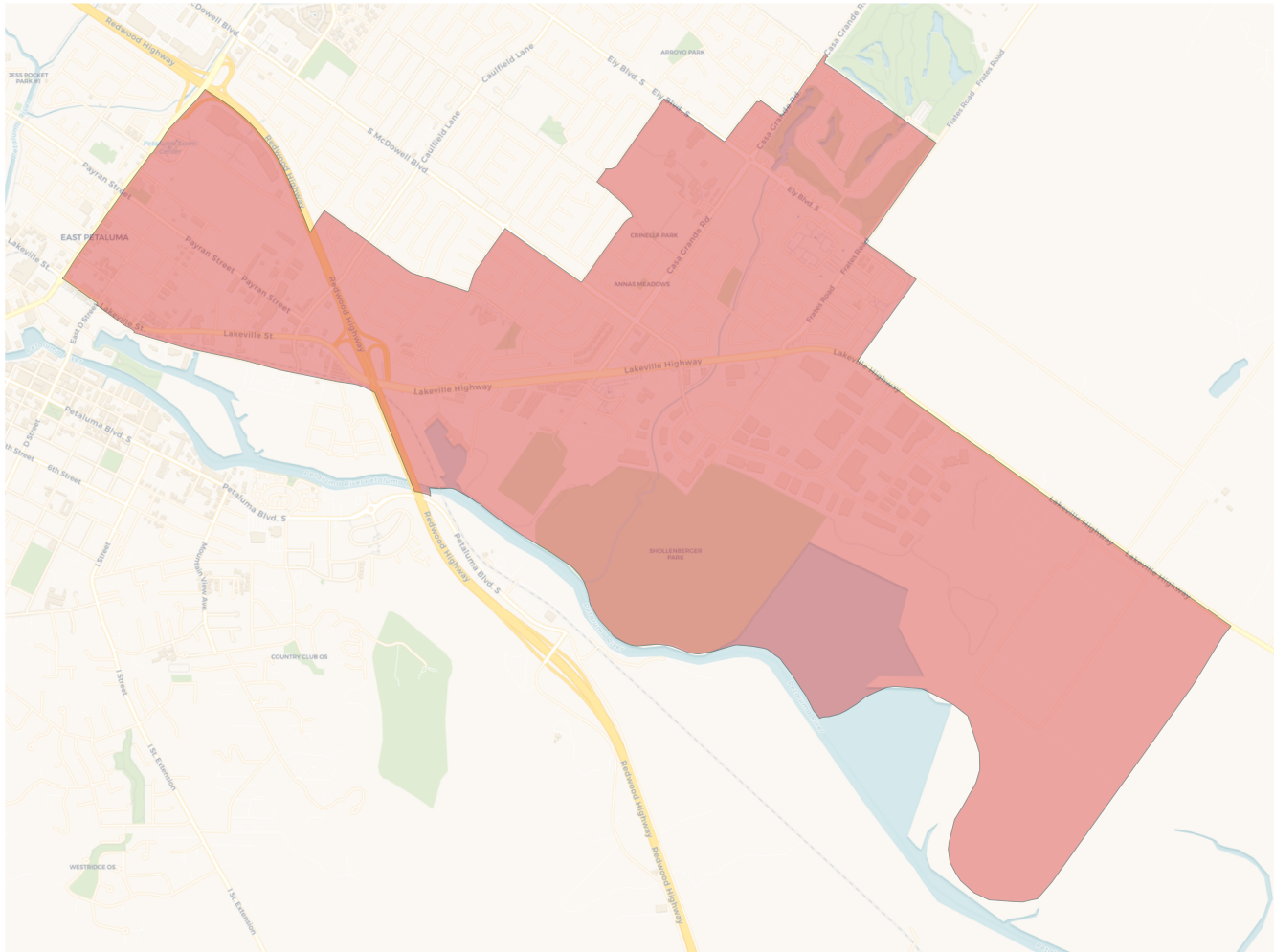


**Citizen Voting Age Population**

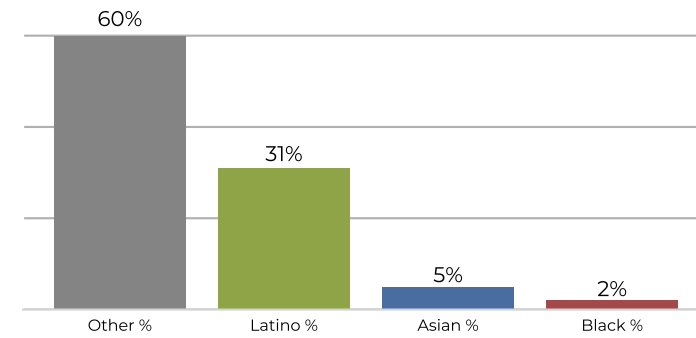


Population	Deviation	Deviation %	Other	Other %	Latino	Latino %	Asian	Asian %	Black	Black %
10,070	96	1.0%	7,966	79.1%	1,761	17.5%	262	2.6%	81	0.8%
Total CVAP	Other CVAP	Other CVAP %	Latino CVAP	Latino CVAP %	Asian CVAP	Asian CVAP %	Black CVAP	Black CVAP %		
7,821	6,660	85.2%	868	11.1%	207	2.6%	86	1.1%		

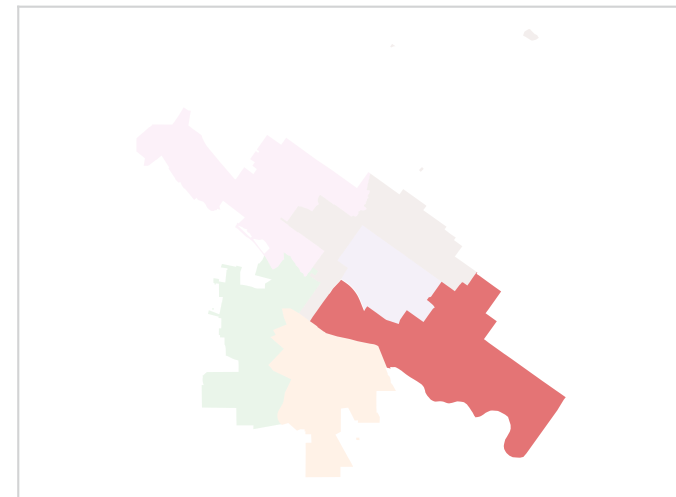
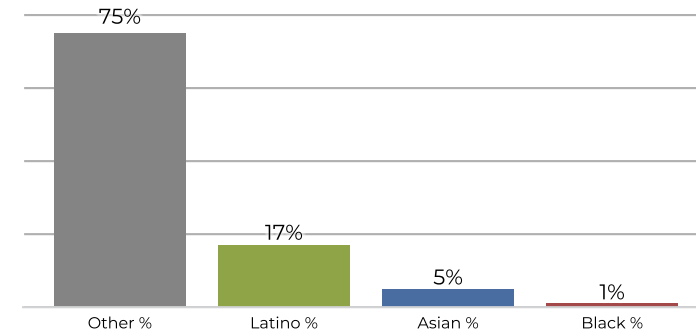
**District 3**



**2020 Census**

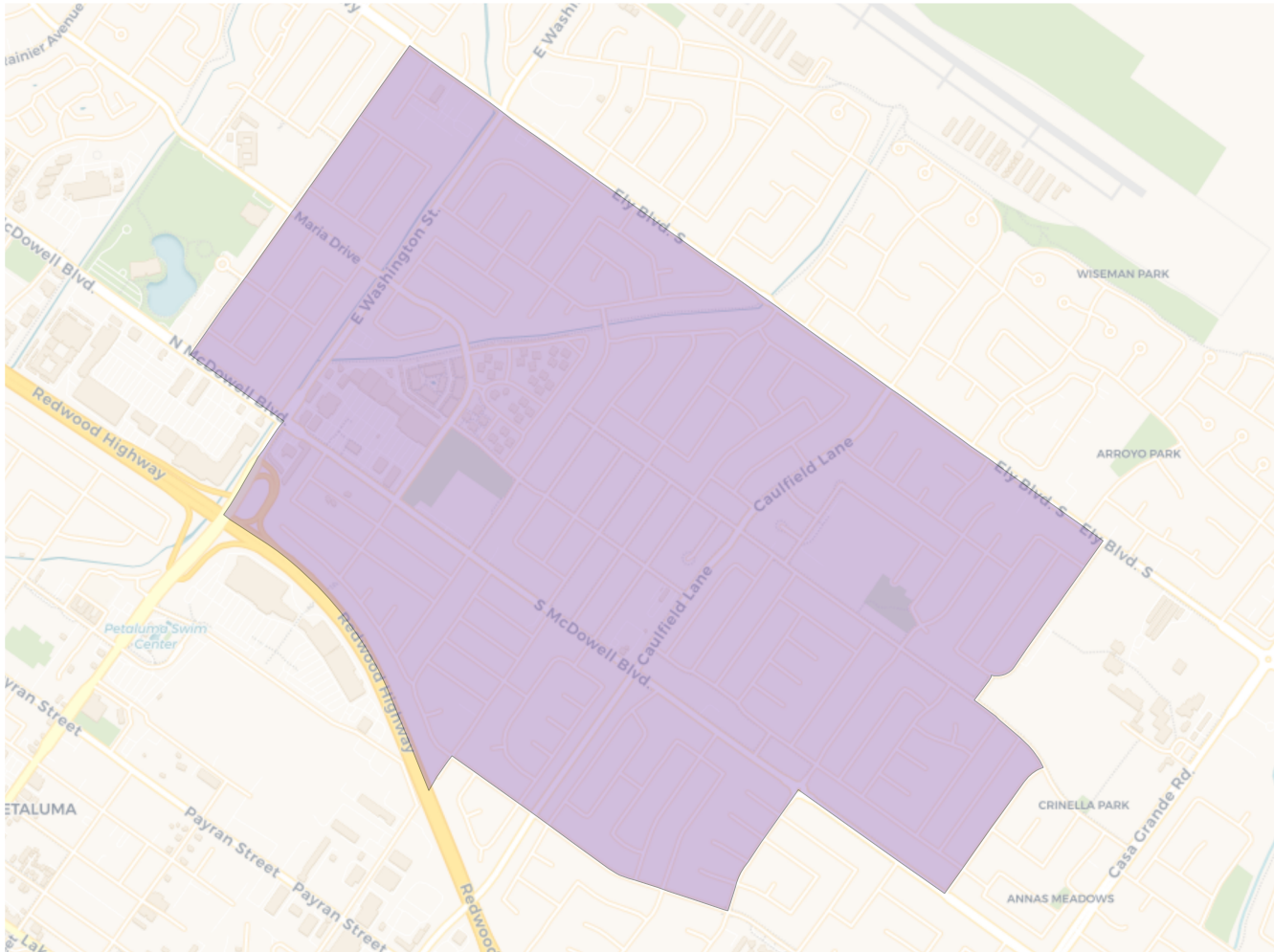


**Citizen Voting Age Population**

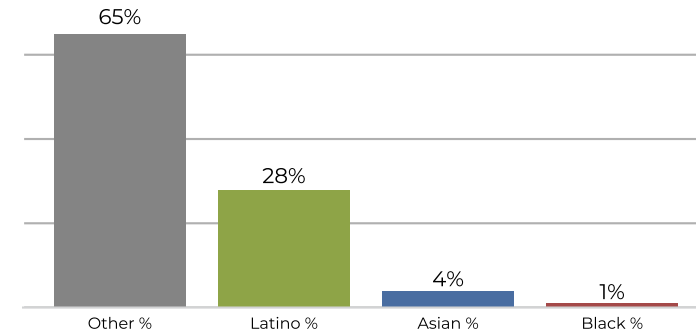


Population	Deviation	Deviation %	Other	Other %	Latino	Latino %	Asian	Asian %	Black	Black %
10,064	90	0.9%	6,054	60.2%	3,215	31.9%	556	5.5%	239	2.4%
Total CVAP	Other CVAP	Other CVAP %	Latino CVAP	Latino CVAP %	Asian CVAP	Asian CVAP %	Black CVAP	Black CVAP %		
6,350	4,794	75.5%	1,122	17.7%	329	5.2%	105	1.7%		

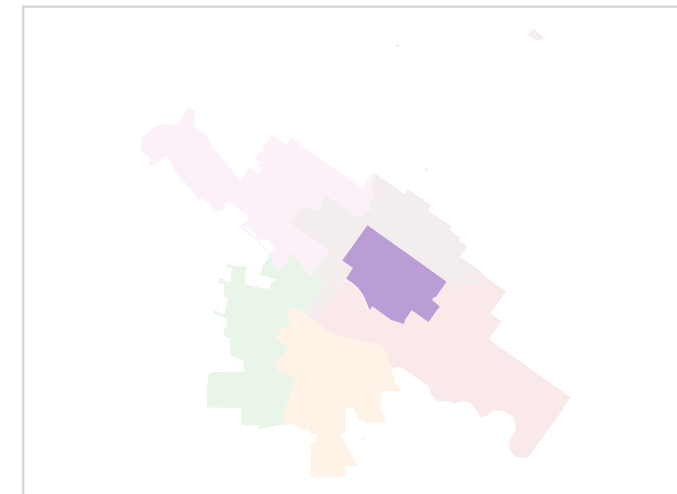
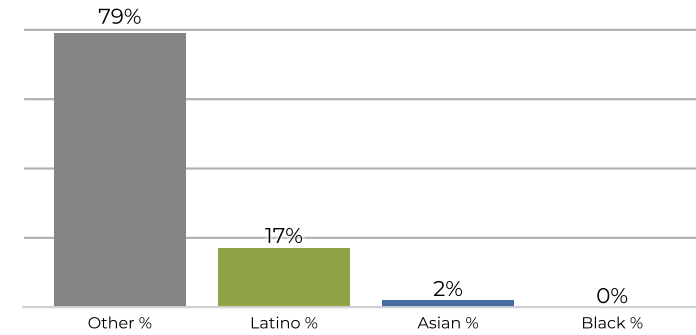
**District 4**



**2020 Census**

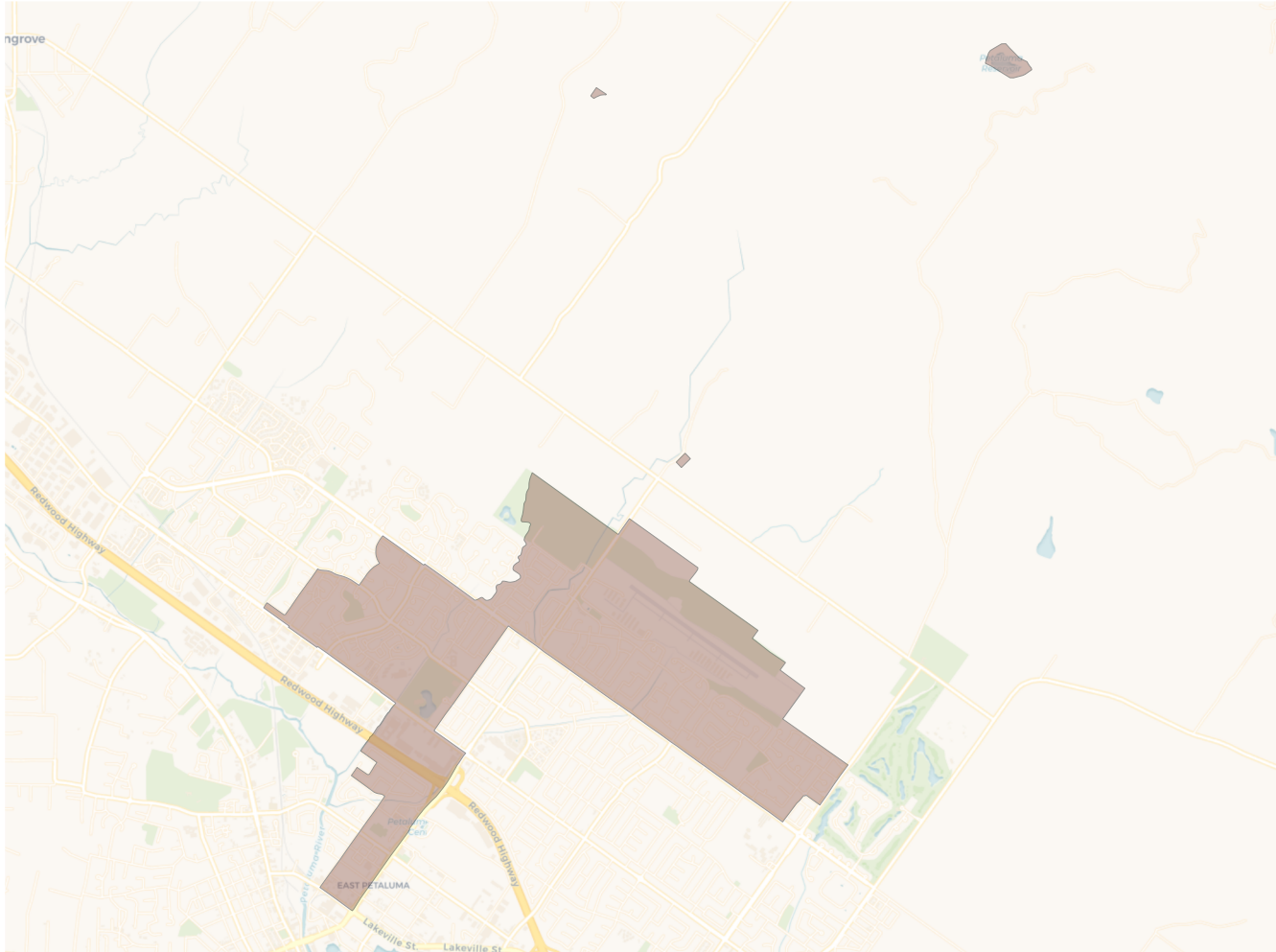


**Citizen Voting Age Population**

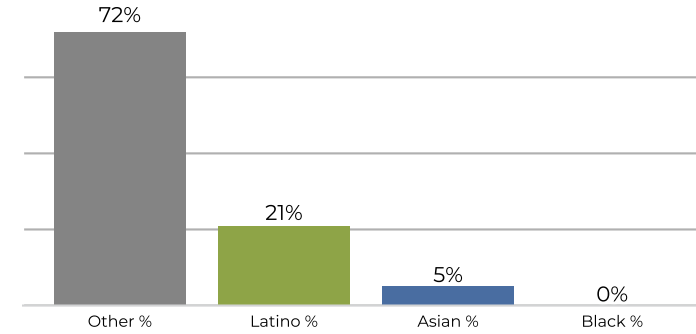


Population	Deviation	Deviation %	Other	Other %	Latino	Latino %	Asian	Asian %	Black	Black %
9,886	-88	-0.9%	6,511	65.9%	2,806	28.4%	438	4.4%	131	1.3%
Total CVAP	Other CVAP	Other CVAP %	Latino CVAP	Latino CVAP %	Asian CVAP	Asian CVAP %	Black CVAP	Black CVAP %		
7,489	5,938	79.3%	1,307	17.5%	204	2.7%	40	0.5%		

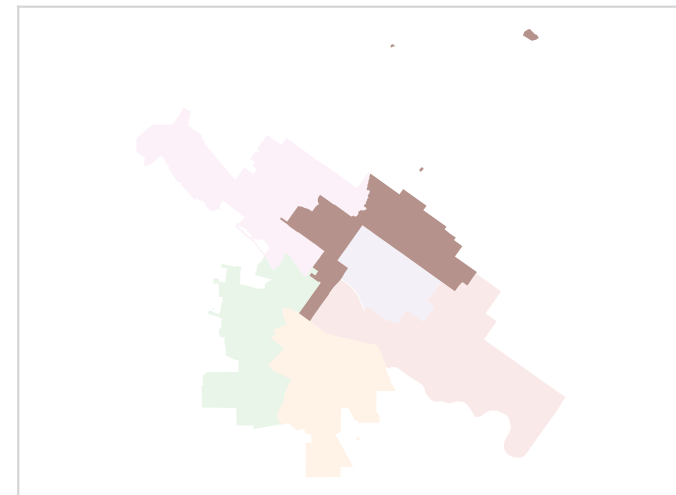
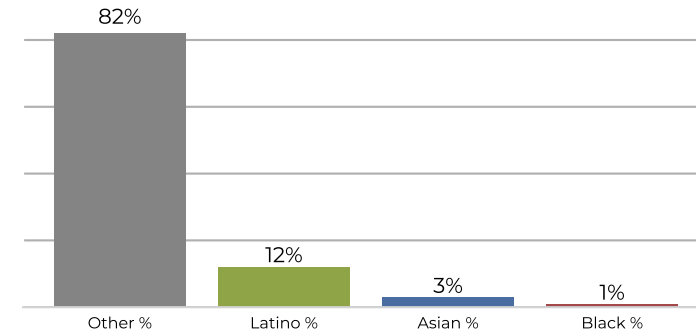
**District 5**



**2020 Census**

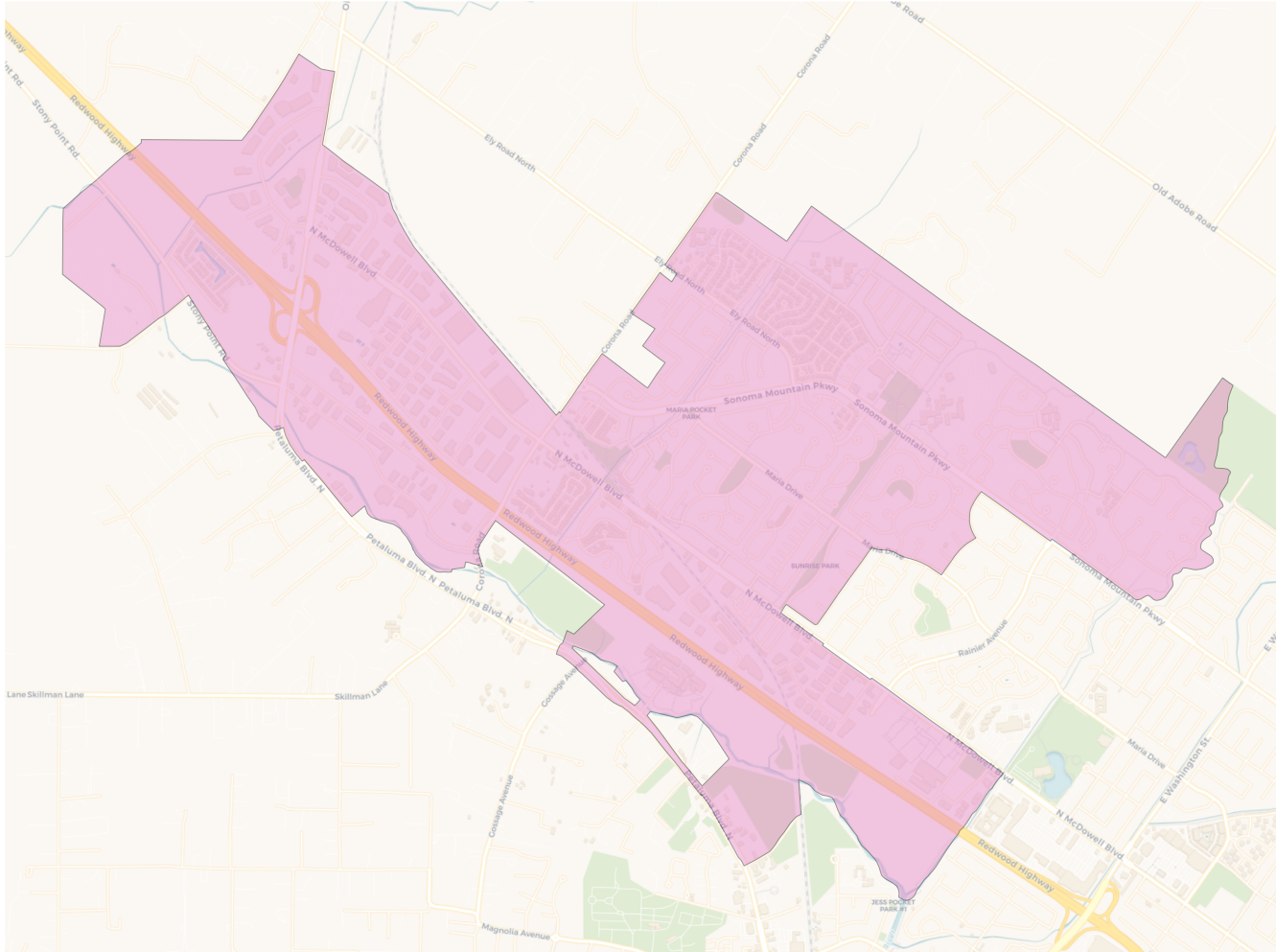


**Citizen Voting Age Population**

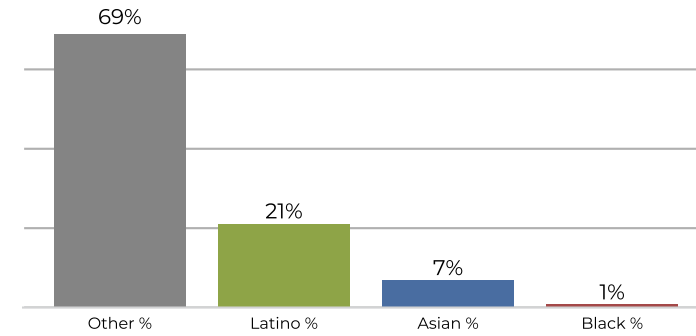


Population	Deviation	Deviation %	Other	Other %	Latino	Latino %	Asian	Asian %	Black	Black %
9,930	-44	-0.4%	7,210	72.6%	2,136	21.5%	495	5.0%	89	0.9%
Total CVAP	Other CVAP	Other CVAP %	Latino CVAP	Latino CVAP %	Asian CVAP	Asian CVAP %	Black CVAP	Black CVAP %		
7,325	6,014	82.1%	901	12.3%	283	3.9%	127	1.7%		

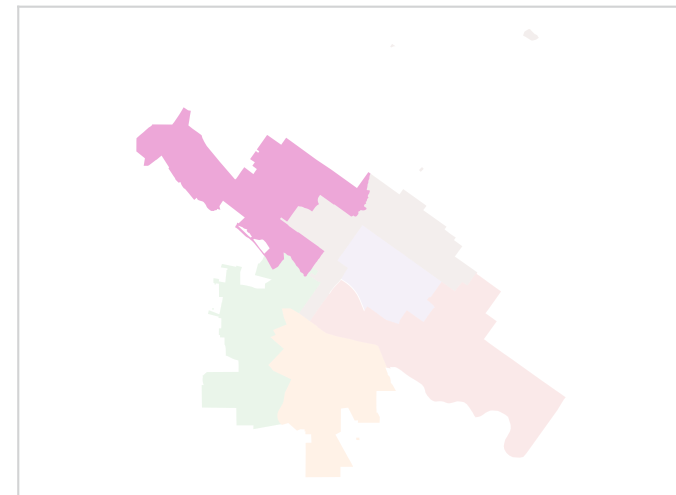
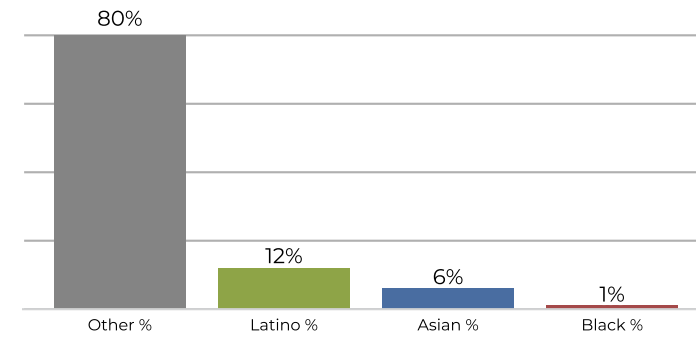
**District 6**



**2020 Census**



**Citizen Voting Age Population**



Population	Deviation	Deviation %	Other	Other %	Latino	Latino %	Asian	Asian %	Black	Black %
10,000	26	0.3%	6,968	69.7%	2,162	21.6%	734	7.3%	136	1.4%
Total CVAP	Other CVAP	Other CVAP %	Latino CVAP	Latino CVAP %	Asian CVAP	Asian CVAP %	Black CVAP	Black CVAP %		
7,018	5,615	80.0%	872	12.4%	440	6.3%	91	1.3%		