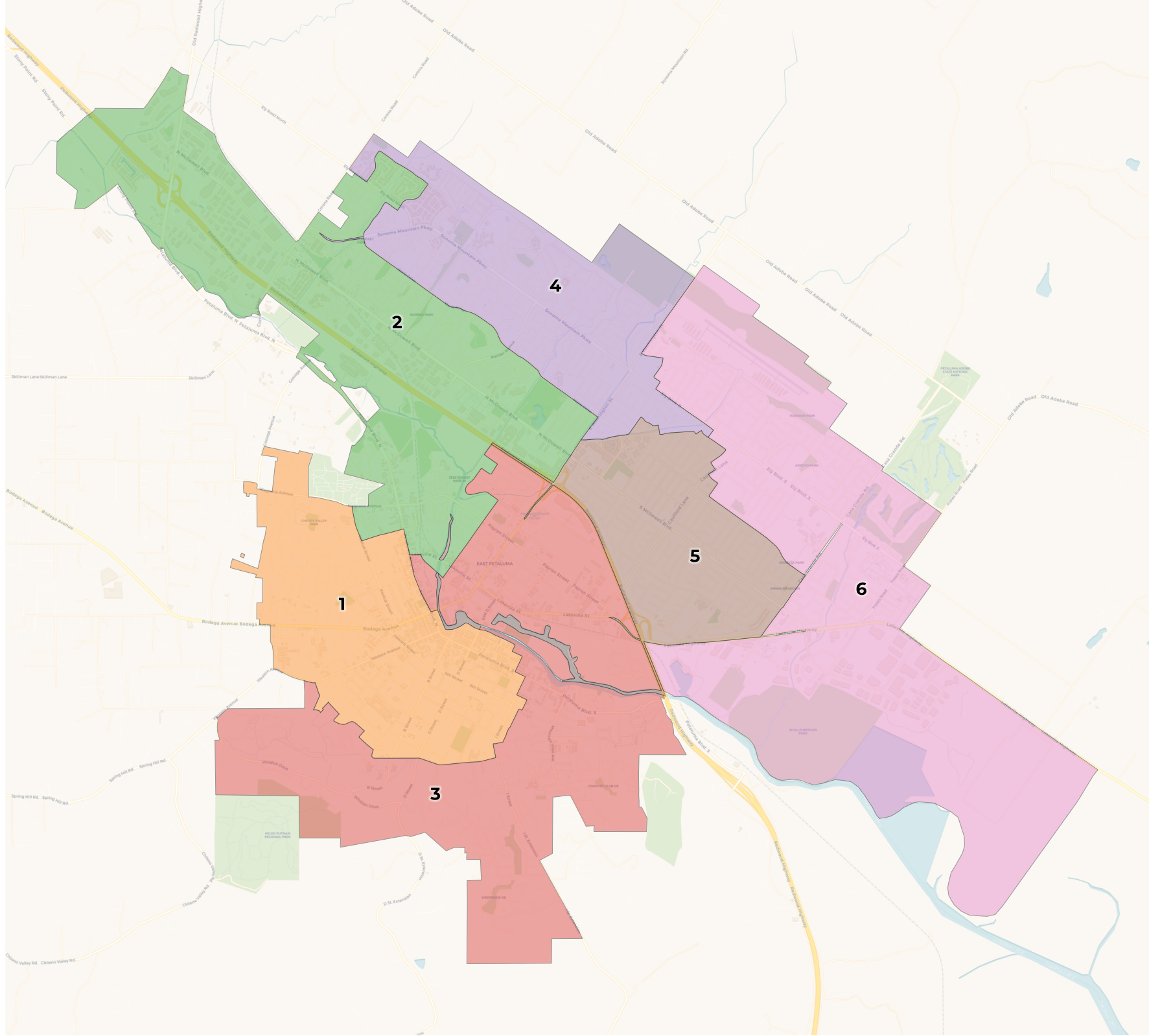




**REDISTRICTING  
PARTNERS**

**City of Petaluma-Community  
Map**

RoyRedlich2



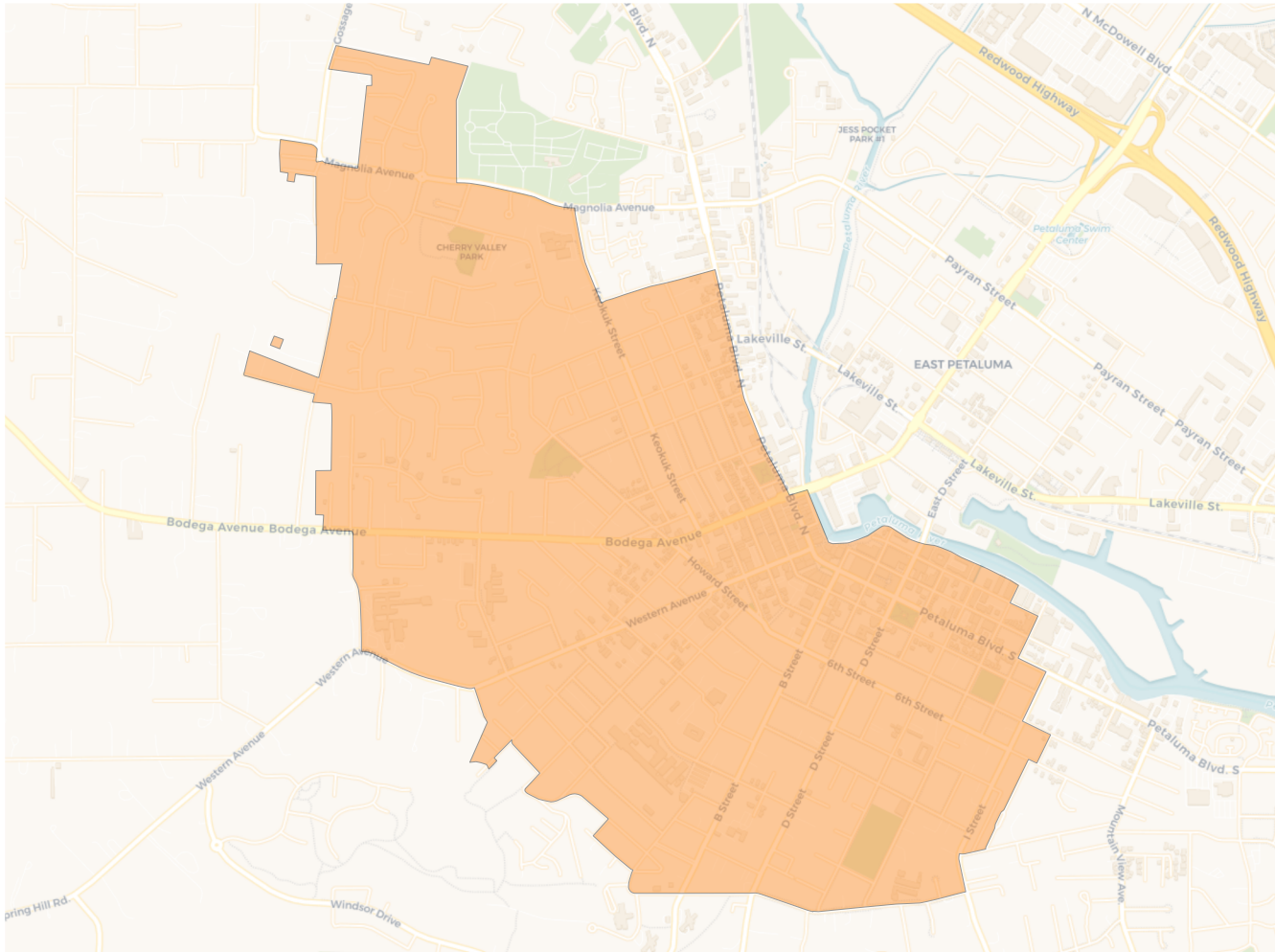
**2020 Census**

	1	2	3	4	5	6
Population	9,978	9,981	9,997	9,913	9,998	9,979
Deviation	4	7	23	-61	24	5
Deviation %	0.0%	0.1%	0.2%	-0.6%	0.2%	0.1%
Other	7,990	6,604	7,681	7,209	6,088	7,042
Other %	80.1%	66.2%	76.8%	72.7%	60.9%	70.6%
Latino	1,656	2,784	1,864	1,888	3,231	2,211
Latino %	16.6%	27.9%	18.6%	19.0%	32.3%	22.2%
Asian	232	462	356	703	482	577
Asian %	2.3%	4.6%	3.6%	7.1%	4.8%	5.8%
Black	100	131	96	113	197	149
Black %	1.0%	1.3%	1.0%	1.1%	2.0%	1.5%

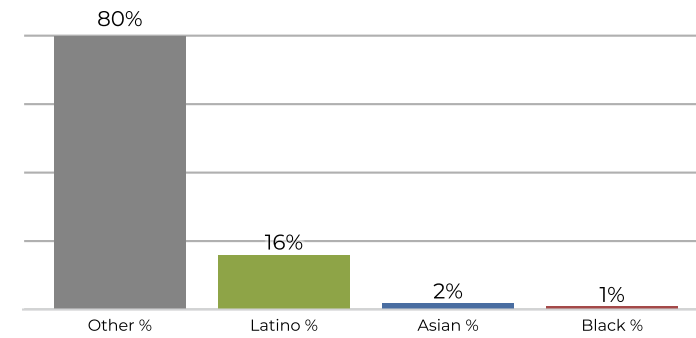
**Citizen Voting Age Population (CVAP)**

	1	2	3	4	5	6
Total CVAP	7,358	7,241	7,402	6,941	6,944	7,436
Other CVAP	6,474	5,849	5,852	5,711	5,292	6,104
Other CVAP %	88.0%	80.8%	79.1%	82.3%	76.2%	82.1%
Latino CVAP	655	980	1,192	754	1,292	957
Latino CVAP %	8.9%	13.5%	16.1%	10.9%	18.6%	12.9%
Asian CVAP	163	230	284	388	267	332
Asian CVAP %	2.2%	3.2%	3.8%	5.6%	3.8%	4.5%
Black CVAP	66	182	74	88	93	43
Black CVAP %	0.9%	2.5%	1.0%	1.3%	1.3%	0.6%

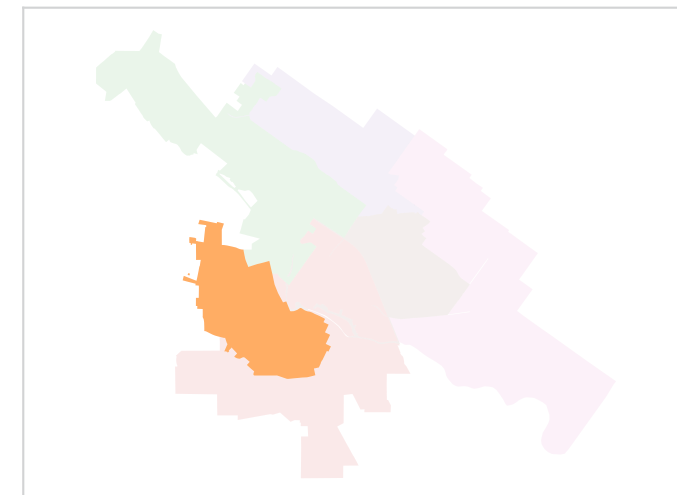
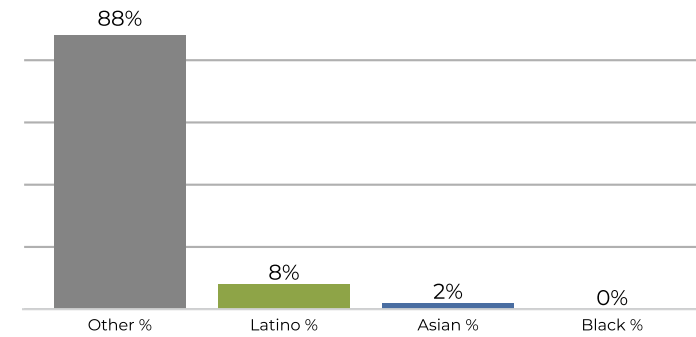
**District 1**



**2020 Census**

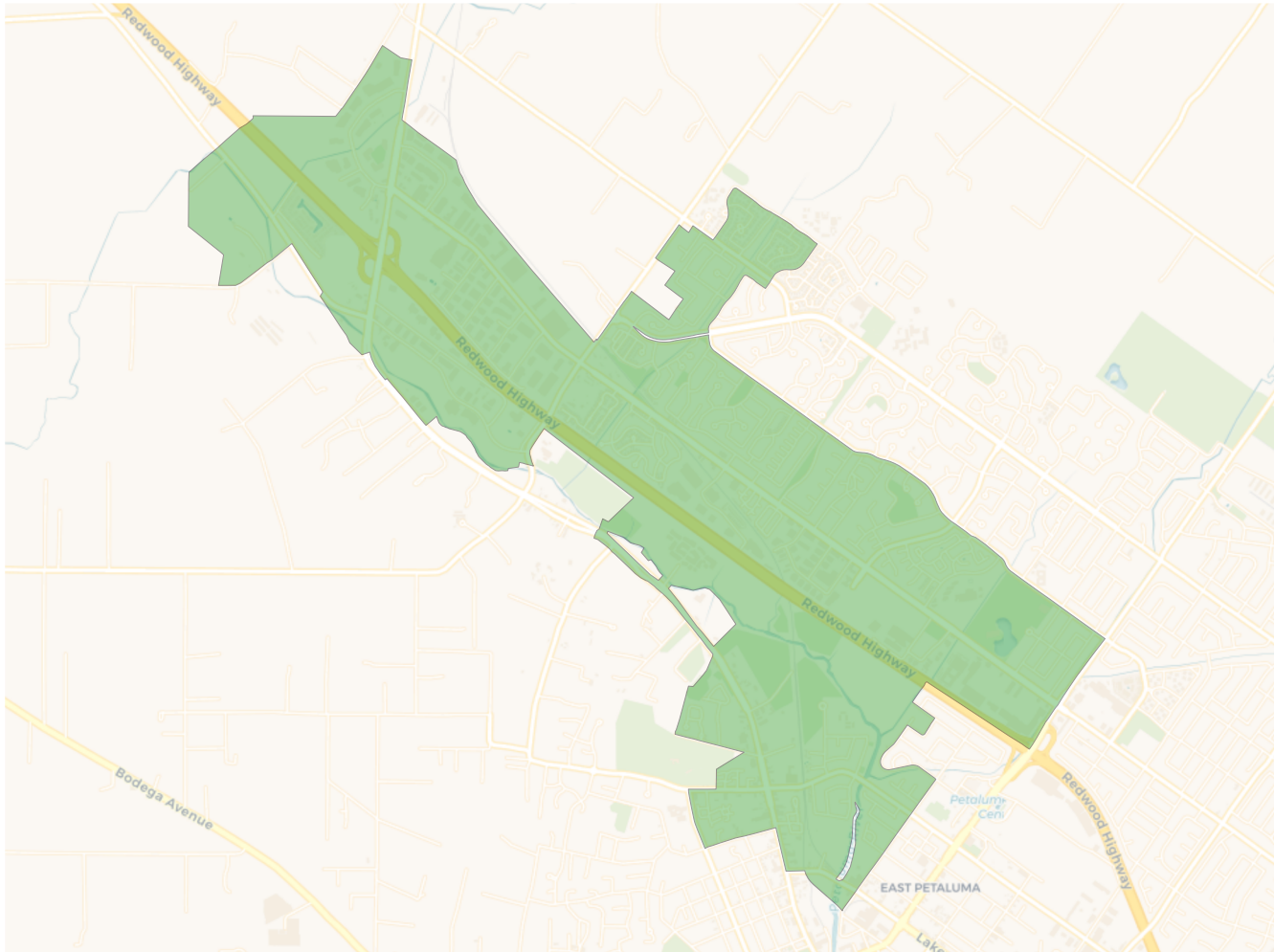


**Citizen Voting Age Population**

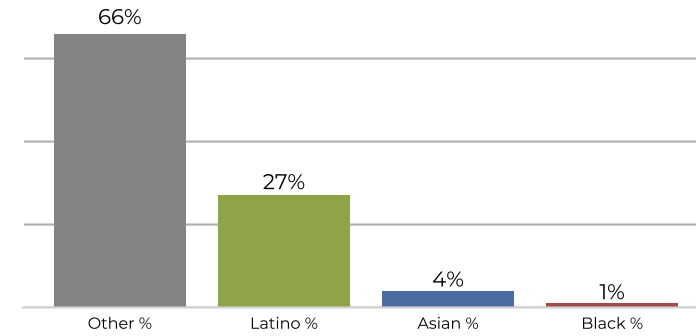


Population	Deviation	Deviation %	Other	Other %	Latino	Latino %	Asian	Asian %	Black	Black %
9,978	4	0.0%	7,990	80.1%	1,656	16.6%	232	2.3%	100	1.0%
Total CVAP	Other CVAP	Other CVAP %	Latino CVAP	Latino CVAP %	Asian CVAP	Asian CVAP %	Black CVAP	Black CVAP %		
7,358	6,474	88.0%	655	8.9%	163	2.2%	66	0.9%		

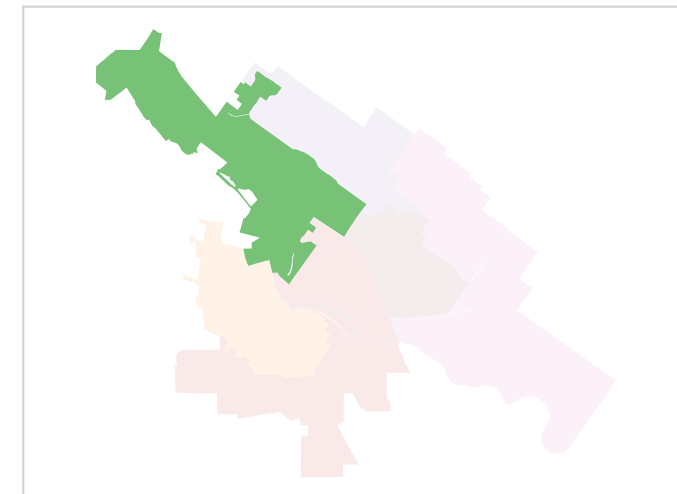
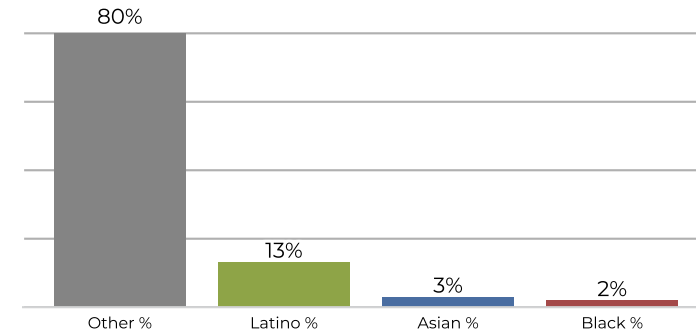
**District 2**



**2020 Census**



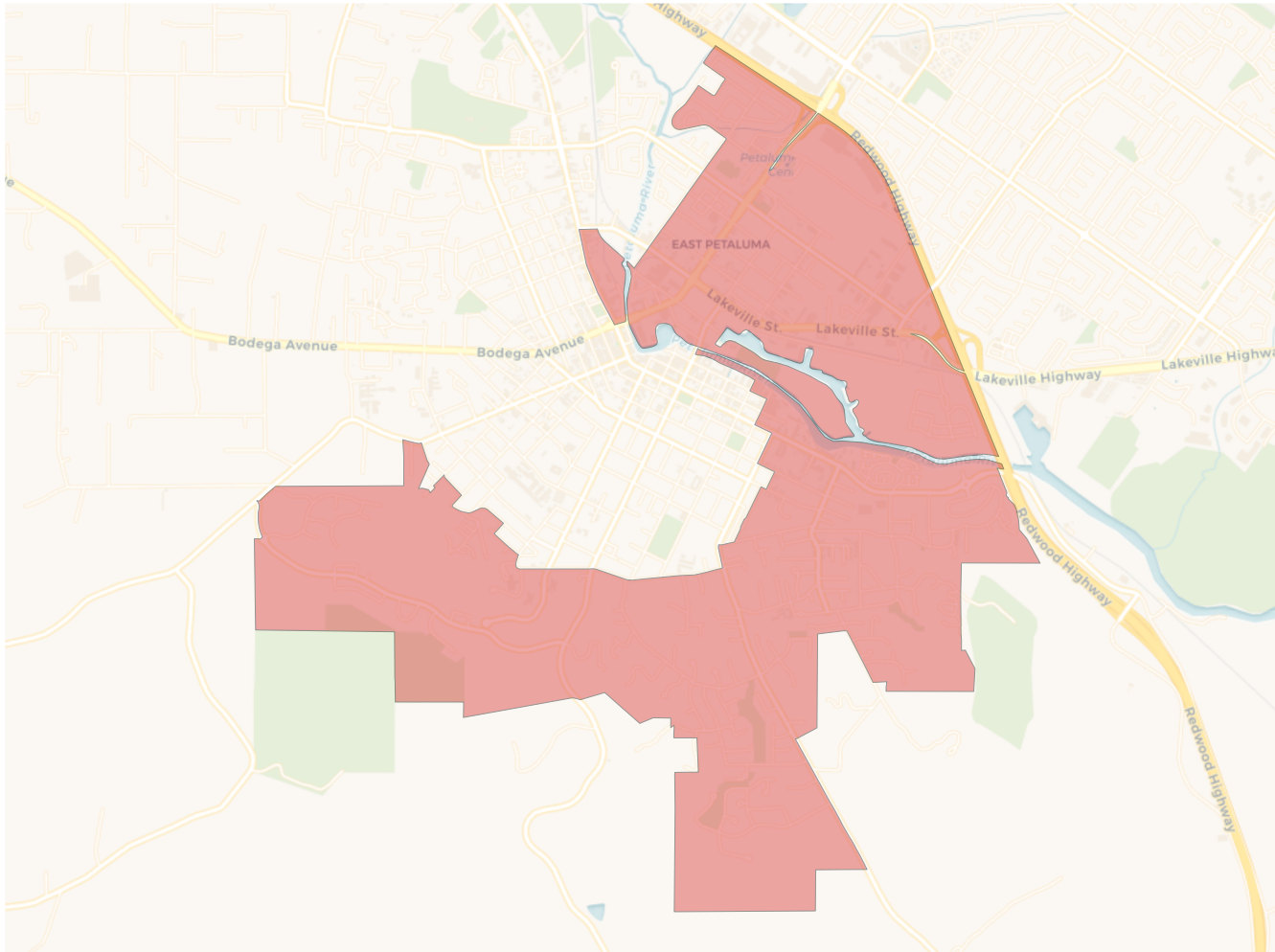
**Citizen Voting Age Population**



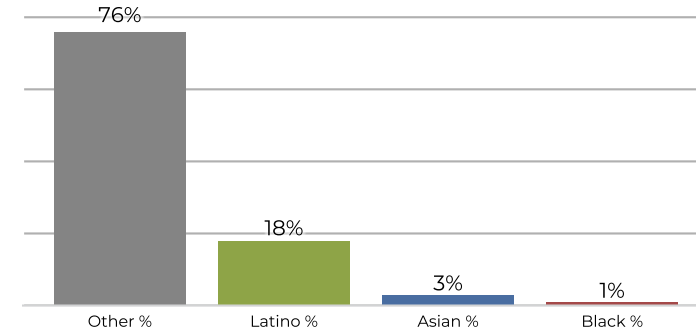
Population	Deviation	Deviation %	Other	Other %	Latino	Latino %	Asian	Asian %	Black	Black %
9,981	7	0.1%	6,604	66.2%	2,784	27.9%	462	4.6%	131	1.3%
Total CVAP	Other CVAP	Other CVAP %	Latino CVAP	Latino CVAP %	Asian CVAP	Asian CVAP %	Black CVAP	Black CVAP %		
7,241	5,849	80.8%	980	13.5%	230	3.2%	182	2.5%		



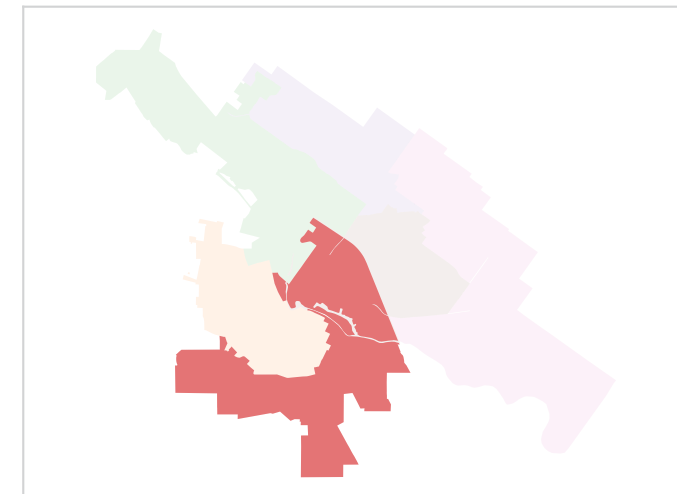
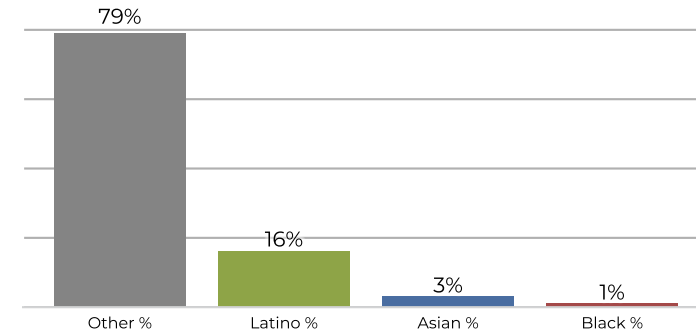
**District 3**



**2020 Census**

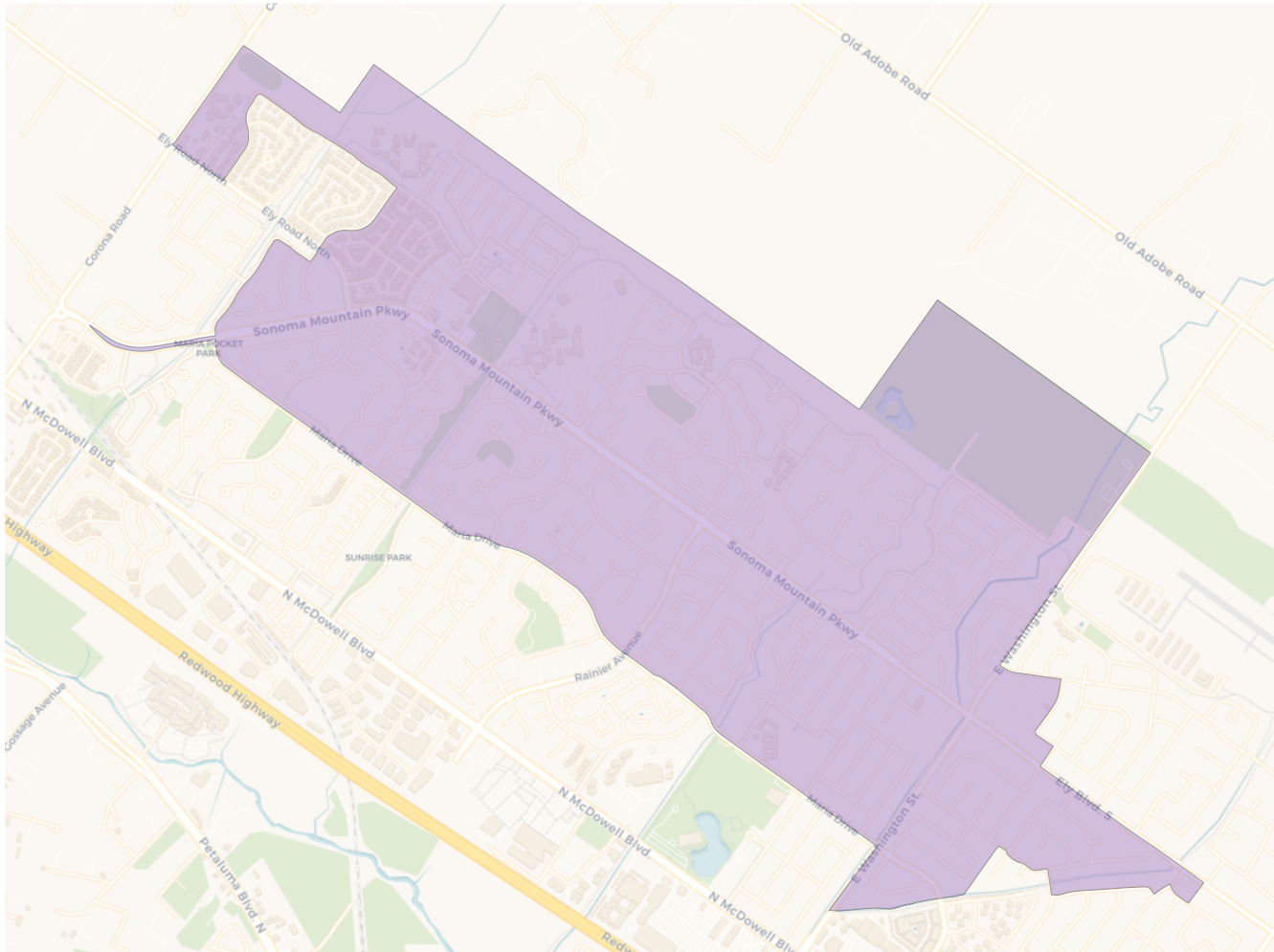


**Citizen Voting Age Population**

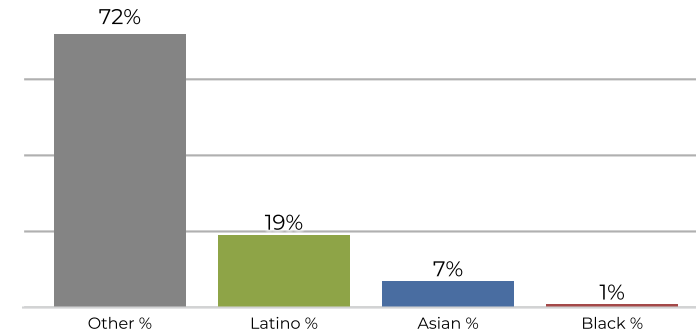


Population	Deviation	Deviation %	Other	Other %	Latino	Latino %	Asian	Asian %	Black	Black %
9,997	23	0.2%	7,681	76.8%	1,864	18.6%	356	3.6%	96	1.0%
Total CVAP	Other CVAP	Other CVAP %	Latino CVAP	Latino CVAP %	Asian CVAP	Asian CVAP %	Black CVAP	Black CVAP %		
7,402	5,852	79.1%	1,192	16.1%	284	3.8%	74	1.0%		

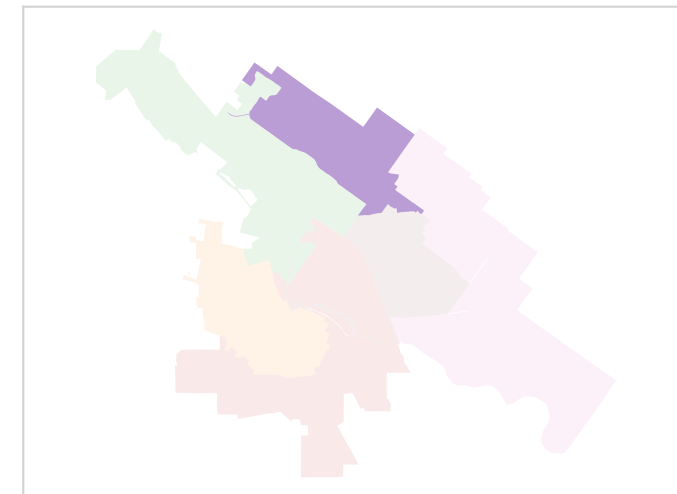
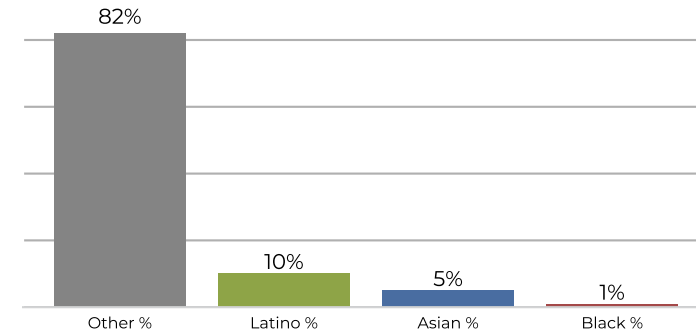
**District 4**



**2020 Census**

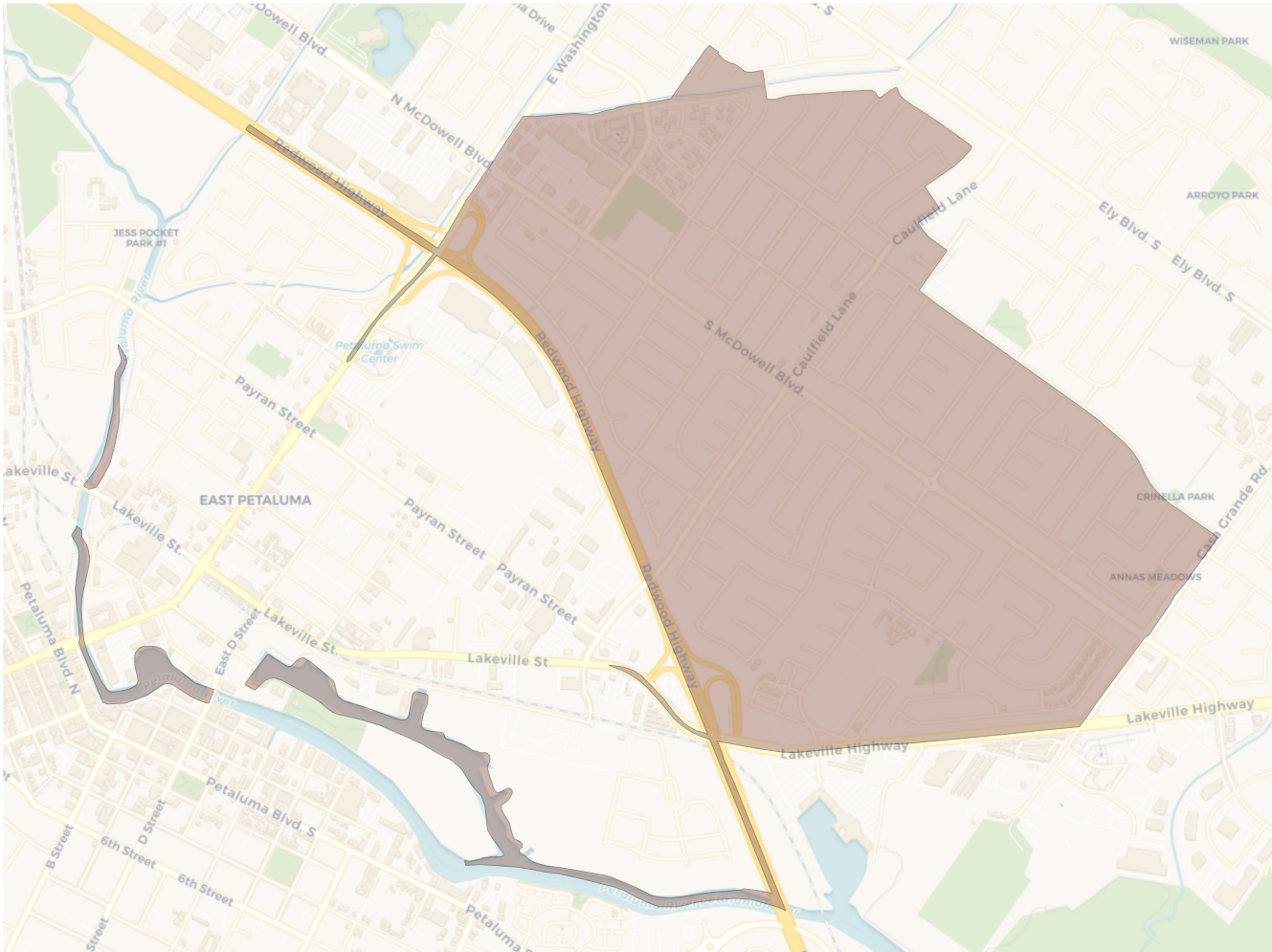


**Citizen Voting Age Population**

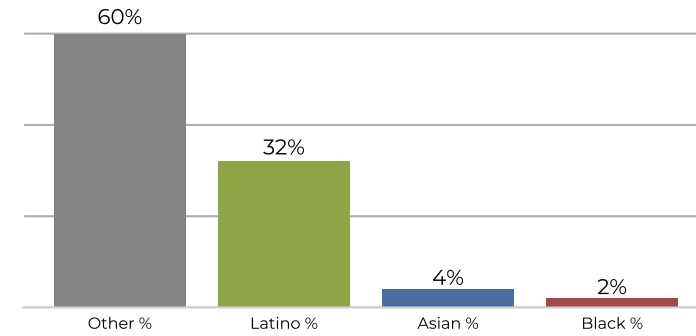


Population	Deviation	Deviation %	Other	Other %	Latino	Latino %	Asian	Asian %	Black	Black %
9,913	-61	-0.6%	7,209	72.7%	1,888	19.0%	703	7.1%	113	1.1%
Total CVAP	Other CVAP	Other CVAP %	Latino CVAP	Latino CVAP %	Asian CVAP	Asian CVAP %	Black CVAP	Black CVAP %		
6,941	5,711	82.3%	754	10.9%	388	5.6%	88	1.3%		

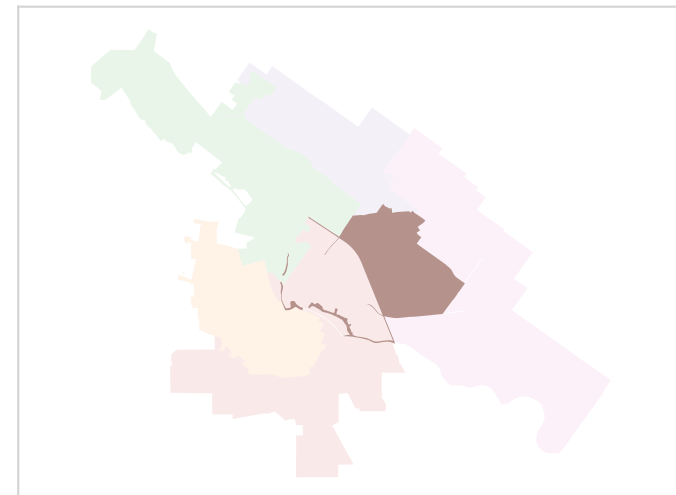
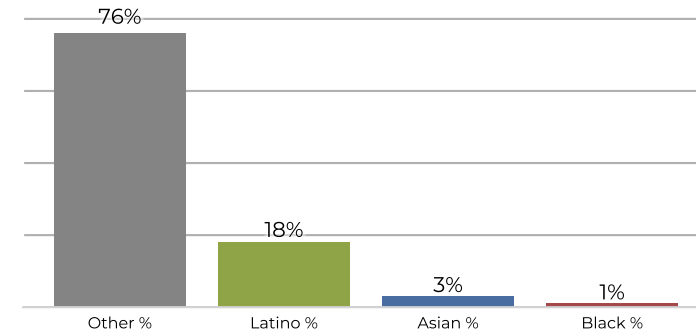
## District 5



## 2020 Census



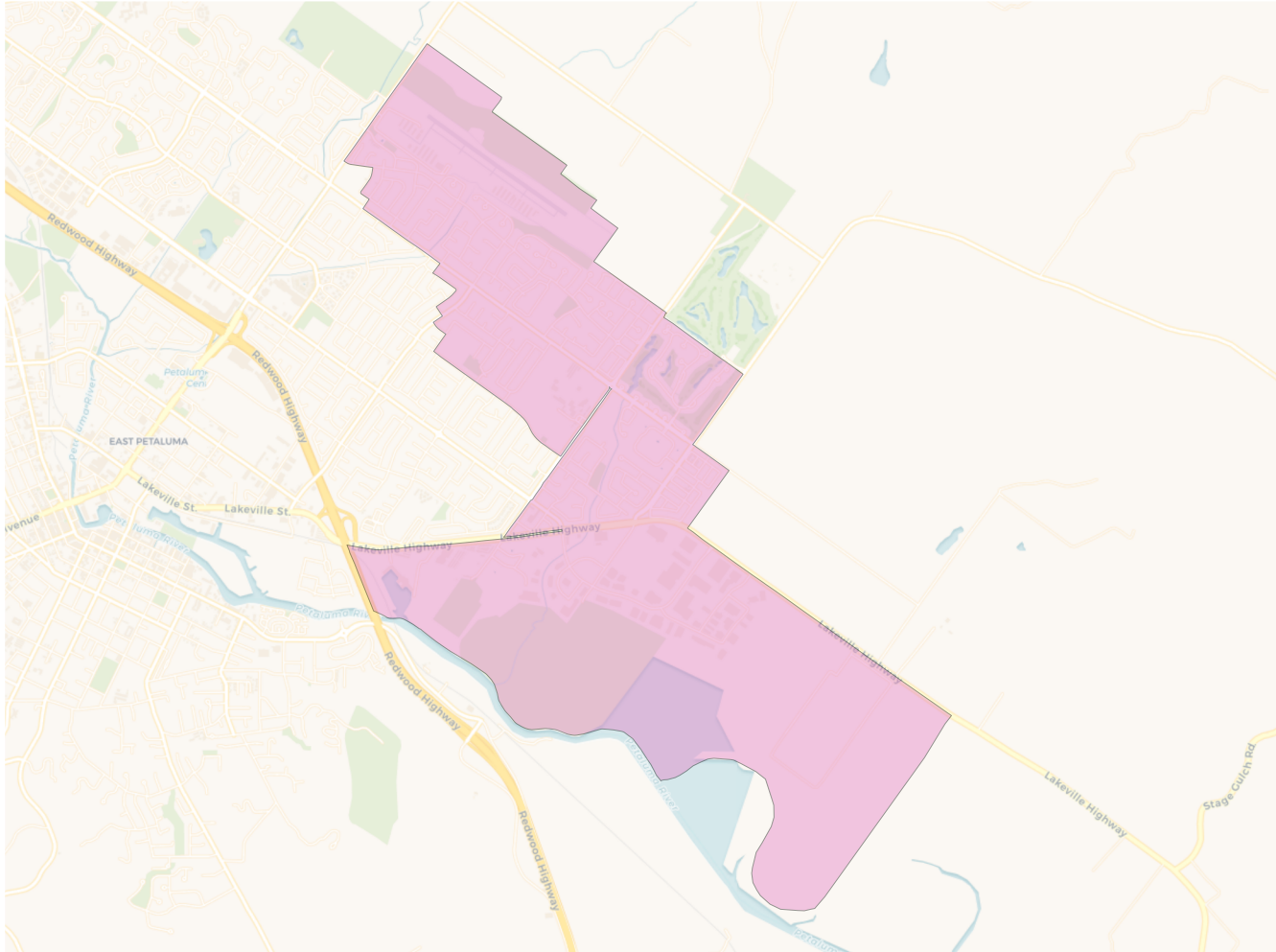
## Citizen Voting Age Population



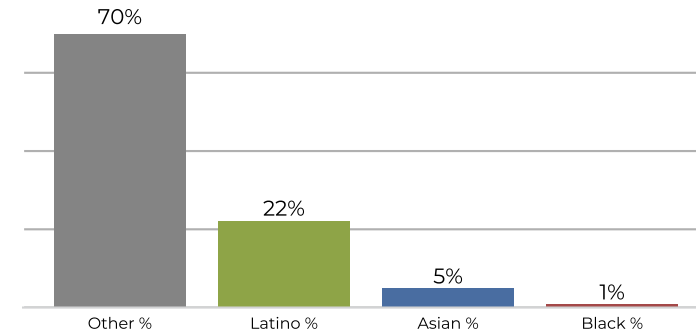
Population	Deviation	Deviation %	Other	Other %	Latino	Latino %	Asian	Asian %	Black	Black %
9,998	24	0.2%	6,088	60.9%	3,231	32.3%	482	4.8%	197	2.0%
Total CVAP	Other CVAP	Other CVAP %	Latino CVAP	Latino CVAP %	Asian CVAP	Asian CVAP %	Black CVAP	Black CVAP %		
6,944	5,292	76.2%	1,292	18.6%	267	3.8%	93	1.3%		



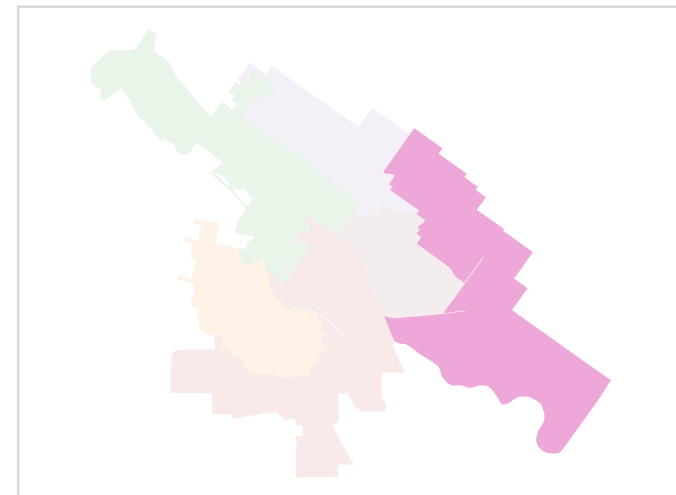
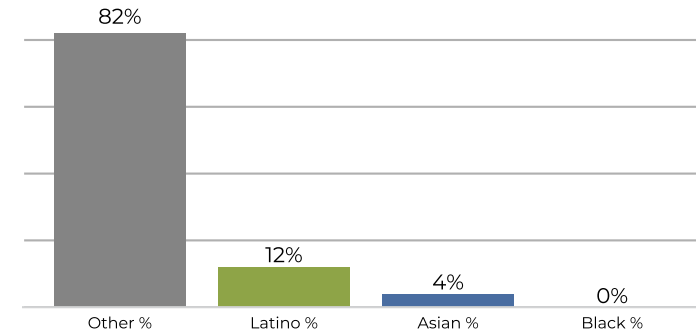
**District 6**



**2020 Census**



**Citizen Voting Age Population**



Population	Deviation	Deviation %	Other	Other %	Latino	Latino %	Asian	Asian %	Black	Black %
9,979	5	0.1%	7,042	70.6%	2,211	22.2%	577	5.8%	149	1.5%
Total CVAP	Other CVAP	Other CVAP %	Latino CVAP	Latino CVAP %	Asian CVAP	Asian CVAP %	Black CVAP	Black CVAP %		
7,436	6,104	82.1%	957	12.9%	332	4.5%	43	0.6%		