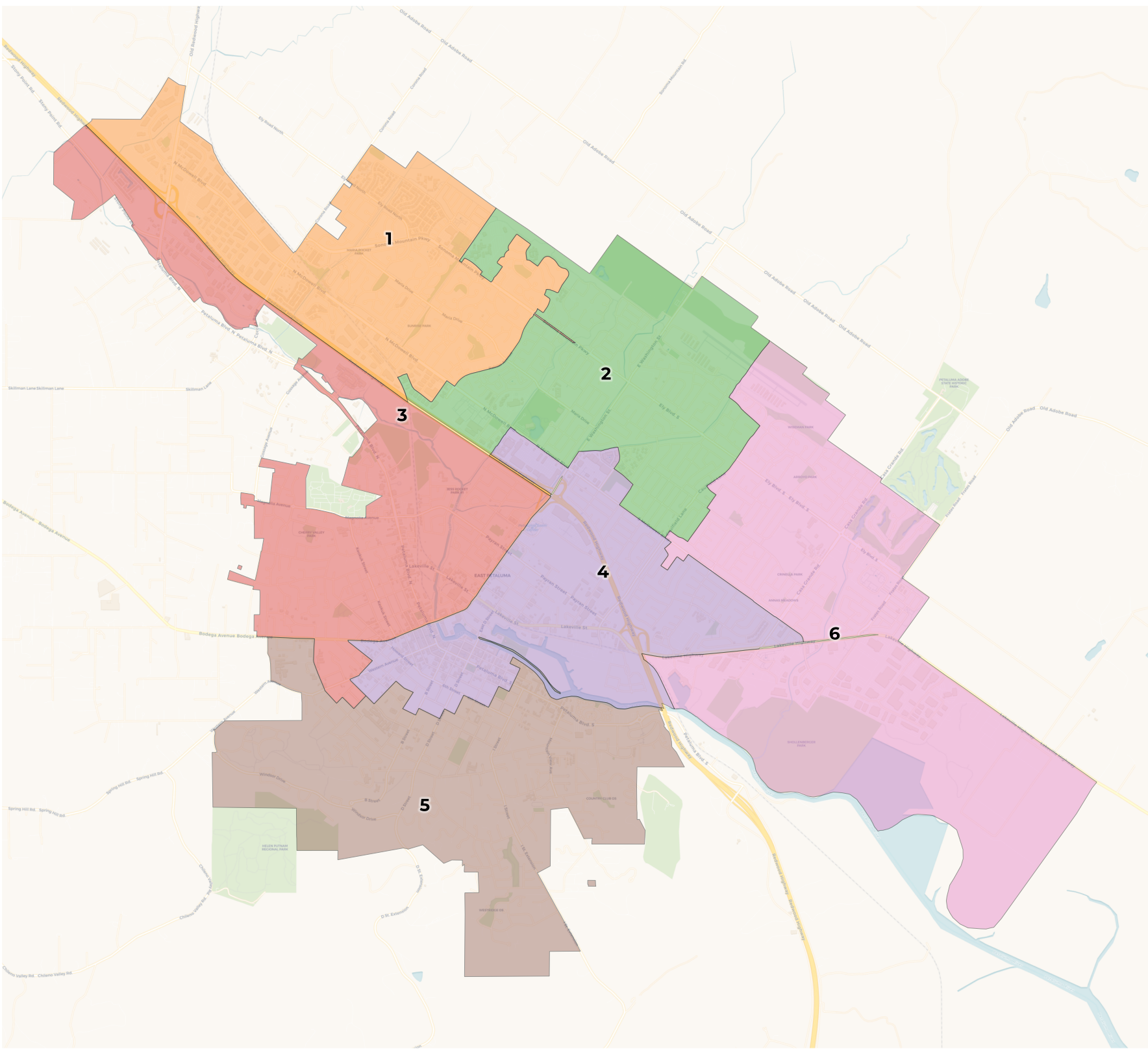




**REDISTRICTING
PARTNERS**

**City of Petaluma-Community
Map
Version_1**



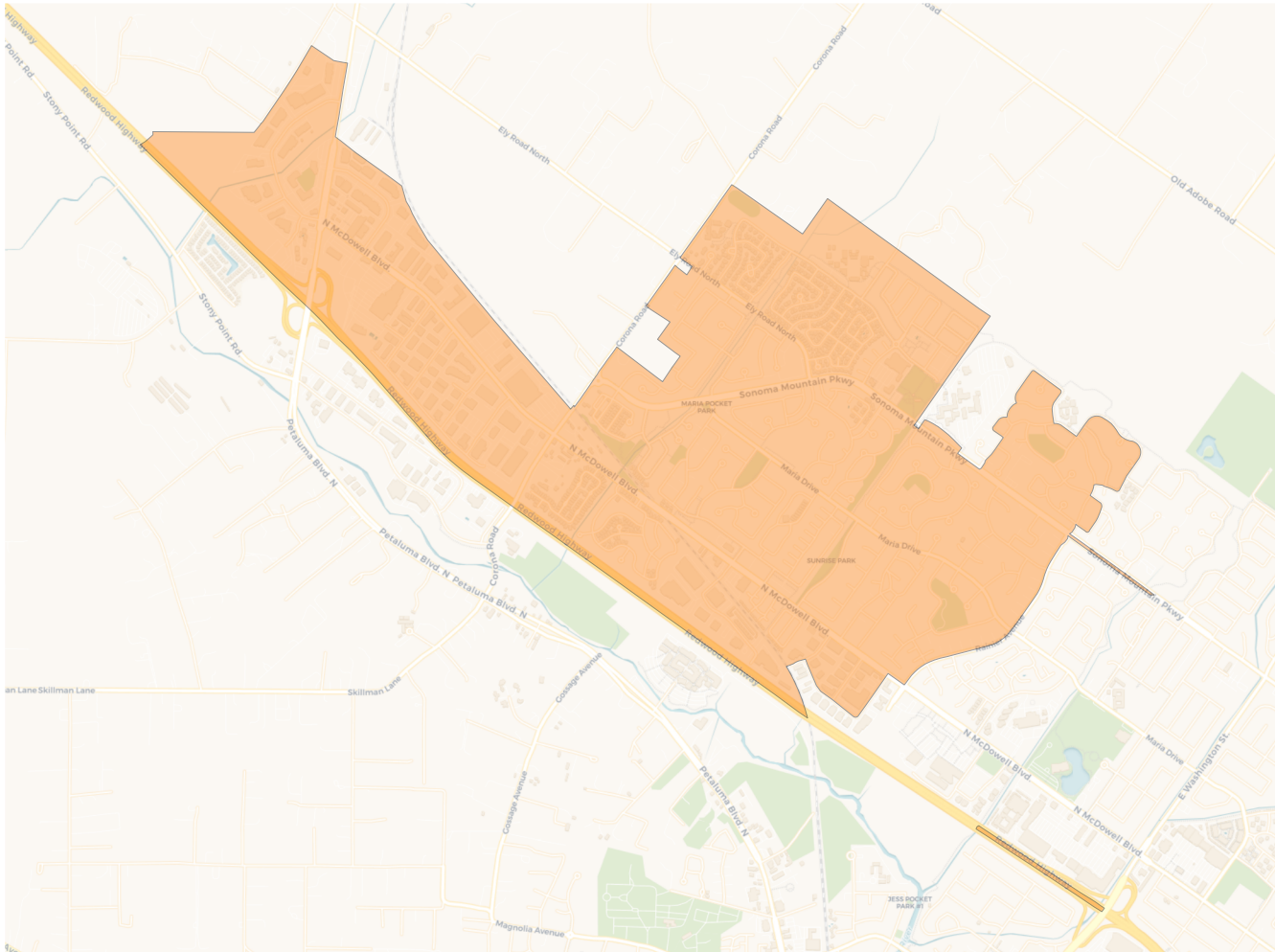
2020 Census

	1	2	3	4	5	6
Population	10,478	10,499	9,225	9,546	10,031	10,067
Deviation	504	525	-749	-428	57	93
Deviation %	5.1%	5.3%	-7.5%	-4.3%	0.6%	0.9%
Other	7,291	7,347	6,716	5,981	8,234	7,045
Other %	69.6%	70.0%	72.8%	62.7%	82.1%	70.0%
Latino	2,286	2,523	2,173	2,991	1,399	2,262
Latino %	21.8%	24.0%	23.6%	31.3%	13.9%	22.5%
Asian	761	522	228	377	324	600
Asian %	7.3%	5.0%	2.5%	3.9%	3.2%	6.0%
Black	140	107	108	197	74	160
Black %	1.3%	1.0%	1.2%	2.1%	0.7%	1.6%

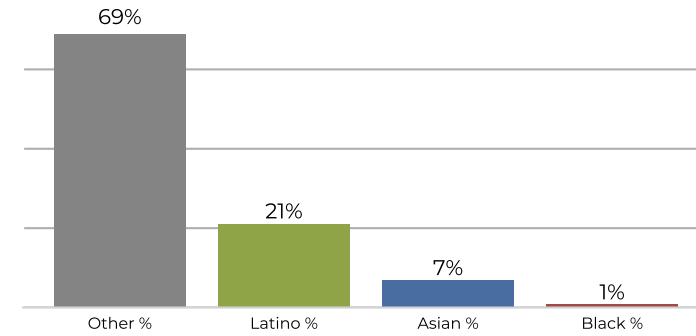
Citizen Voting Age Population (CVAP)

	1	2	3	4	5	6
Total CVAP	7,354	7,622	6,646	6,332	7,921	7,447
Other CVAP	5,875	6,126	5,458	4,802	6,890	6,131
Other CVAP %	79.9%	80.4%	82.1%	75.8%	87.0%	82.3%
Latino CVAP	930	1,145	915	1,202	710	928
Latino CVAP %	12.6%	15.0%	13.8%	19.0%	9.0%	12.5%
Asian CVAP	446	220	179	223	245	351
Asian CVAP %	6.1%	2.9%	2.7%	3.5%	3.1%	4.7%
Black CVAP	103	131	94	105	76	37
Black CVAP %	1.4%	1.7%	1.4%	1.7%	1.0%	0.5%

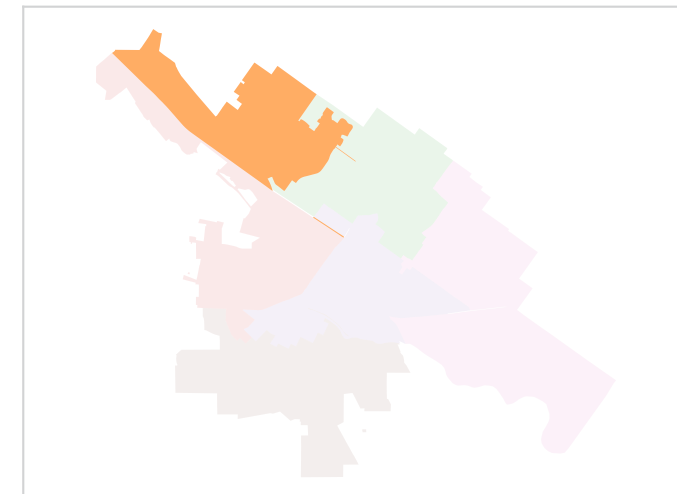
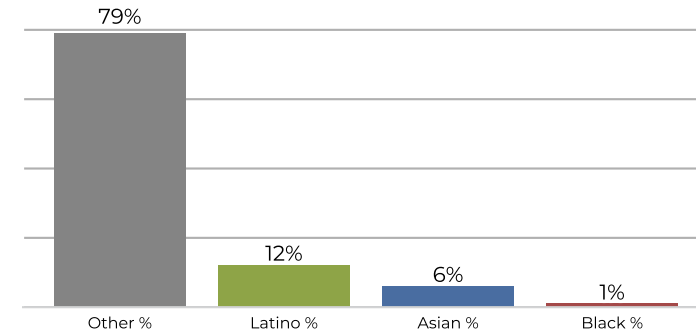
District 1



2020 Census

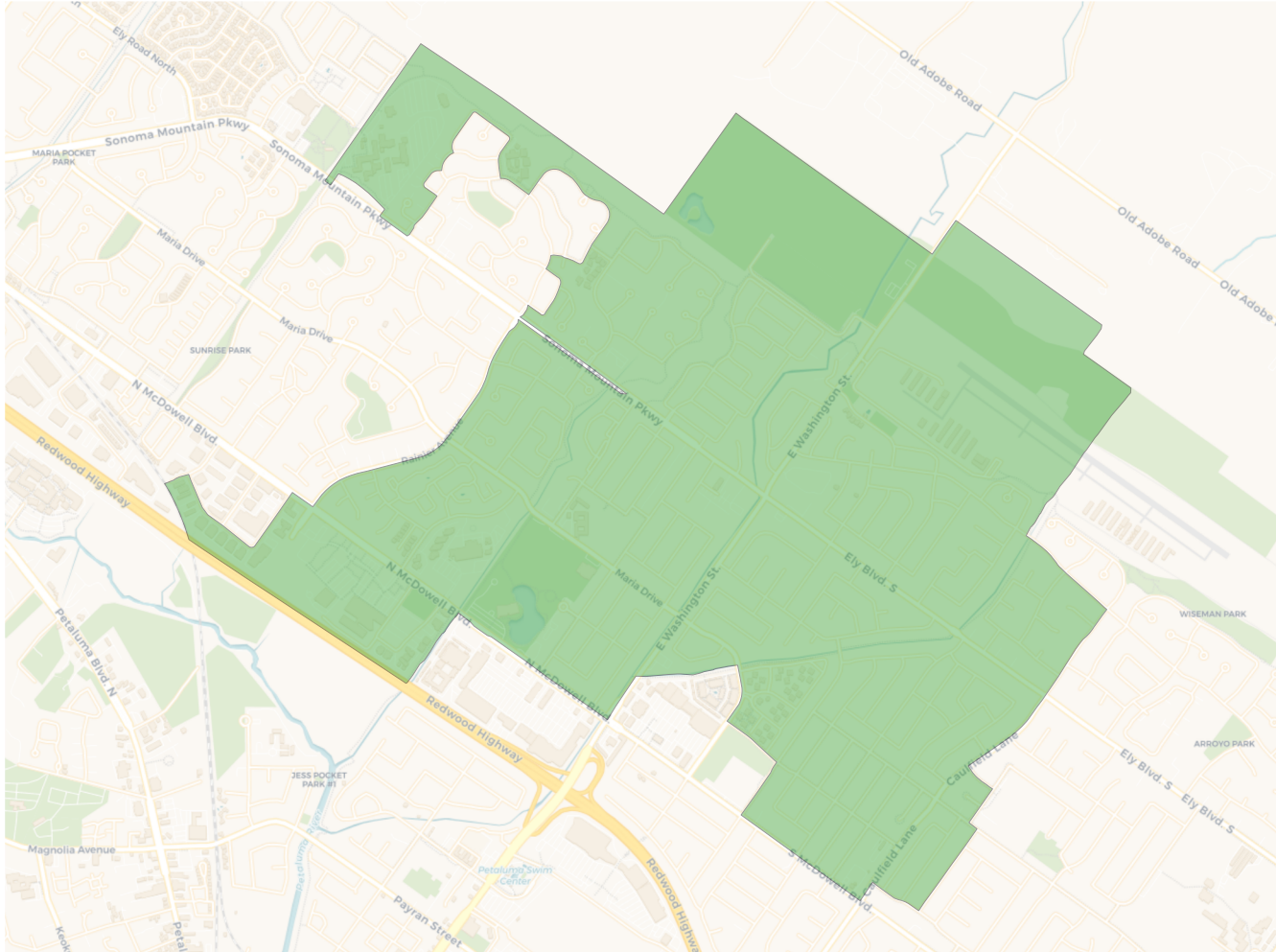


Citizen Voting Age Population

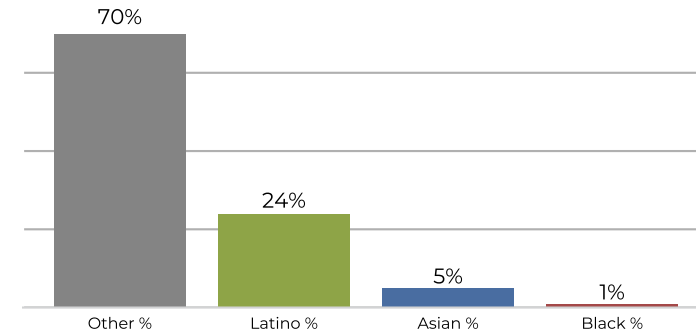


Population	Deviation	Deviation %	Other	Other %	Latino	Latino %	Asian	Asian %	Black	Black %
10,478	504	5.1%	7,291	69.6%	2,286	21.8%	761	7.3%	140	1.3%
Total CVAP	Other CVAP	Other CVAP %	Latino CVAP	Latino CVAP %	Asian CVAP	Asian CVAP %	Black CVAP	Black CVAP %		
7,354	5,875	79.9%	930	12.6%	446	6.1%	103	1.4%		

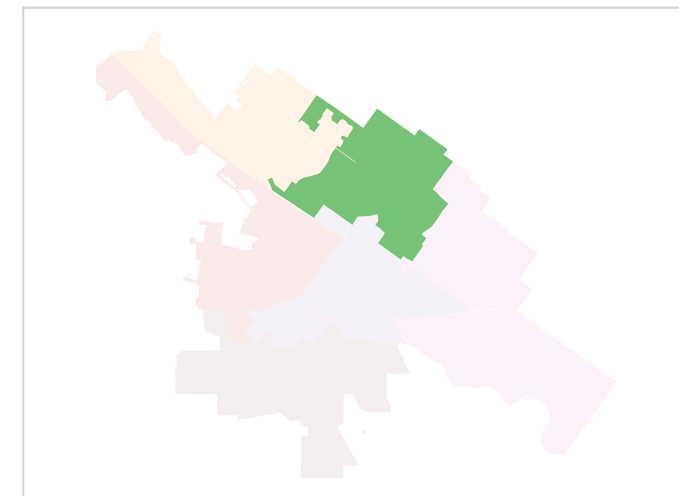
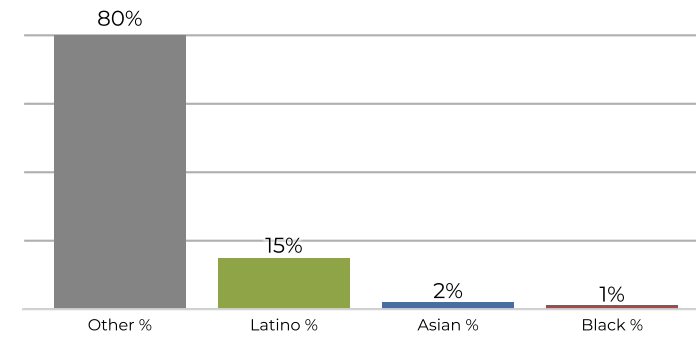
District 2



2020 Census

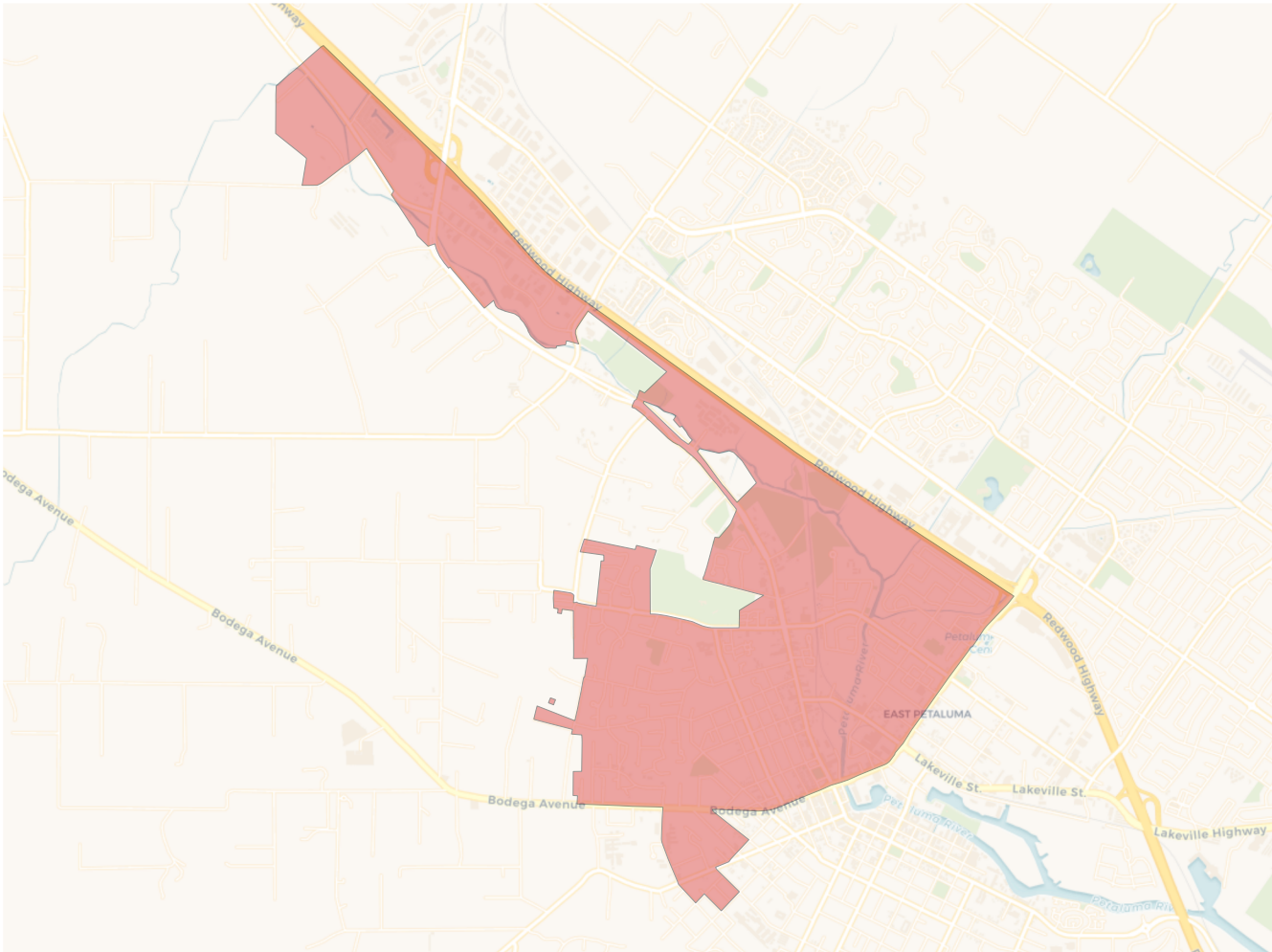


Citizen Voting Age Population

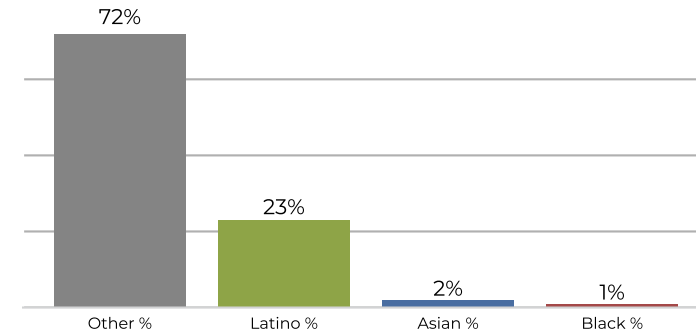


Population	Deviation	Deviation %	Other	Other %	Latino	Latino %	Asian	Asian %	Black	Black %
10,499	525	5.3%	7,347	70.0%	2,523	24.0%	522	5.0%	107	1.0%
Total CVAP	Other CVAP	Other CVAP %	Latino CVAP	Latino CVAP %	Asian CVAP	Asian CVAP %	Black CVAP	Black CVAP %		
7,622	6,126	80.4%	1,145	15.0%	220	2.9%	131	1.7%		

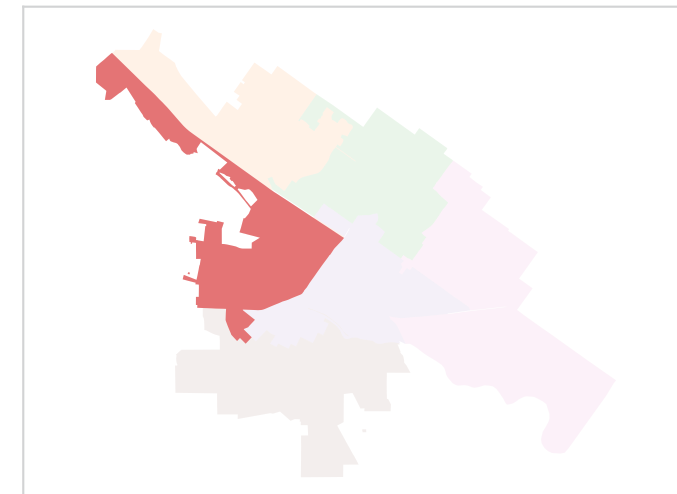
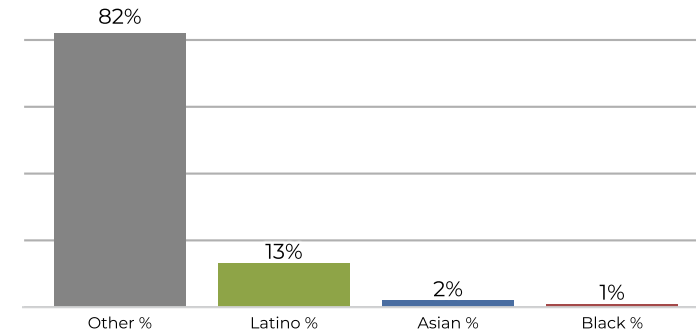
District 3



2020 Census

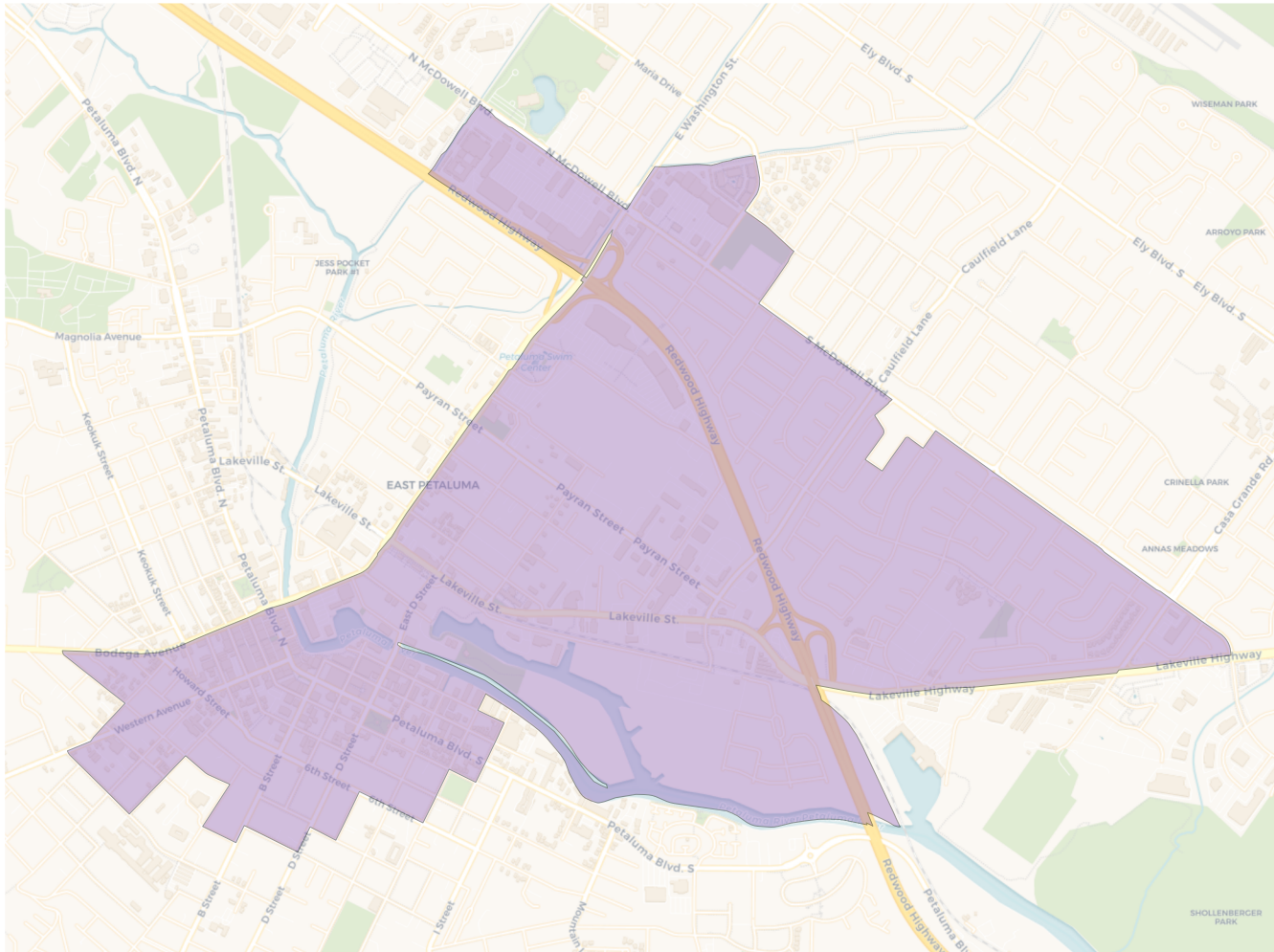


Citizen Voting Age Population

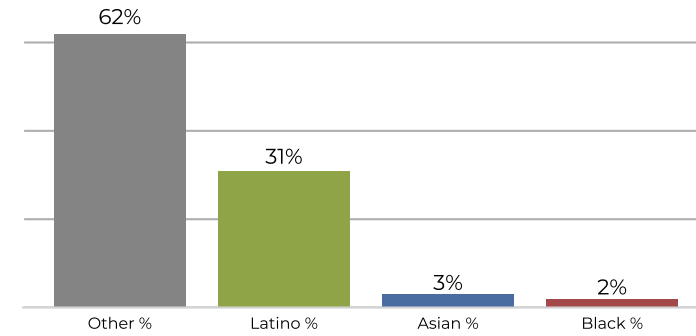


Population	Deviation	Deviation %	Other	Other %	Latino	Latino %	Asian	Asian %	Black	Black %
9,225	-749	-7.5%	6,716	72.8%	2,173	23.6%	228	2.5%	108	1.2%
Total CVAP	Other CVAP	Other CVAP %	Latino CVAP	Latino CVAP %	Asian CVAP	Asian CVAP %	Black CVAP	Black CVAP %		
6,646	5,458	82.1%	915	13.8%	179	2.7%	94	1.4%		

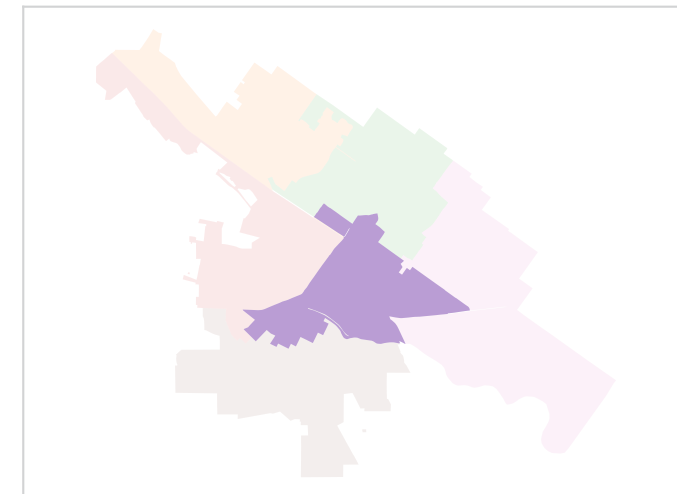
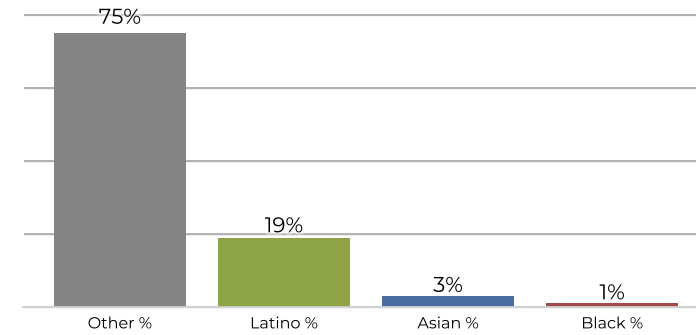
District 4



2020 Census

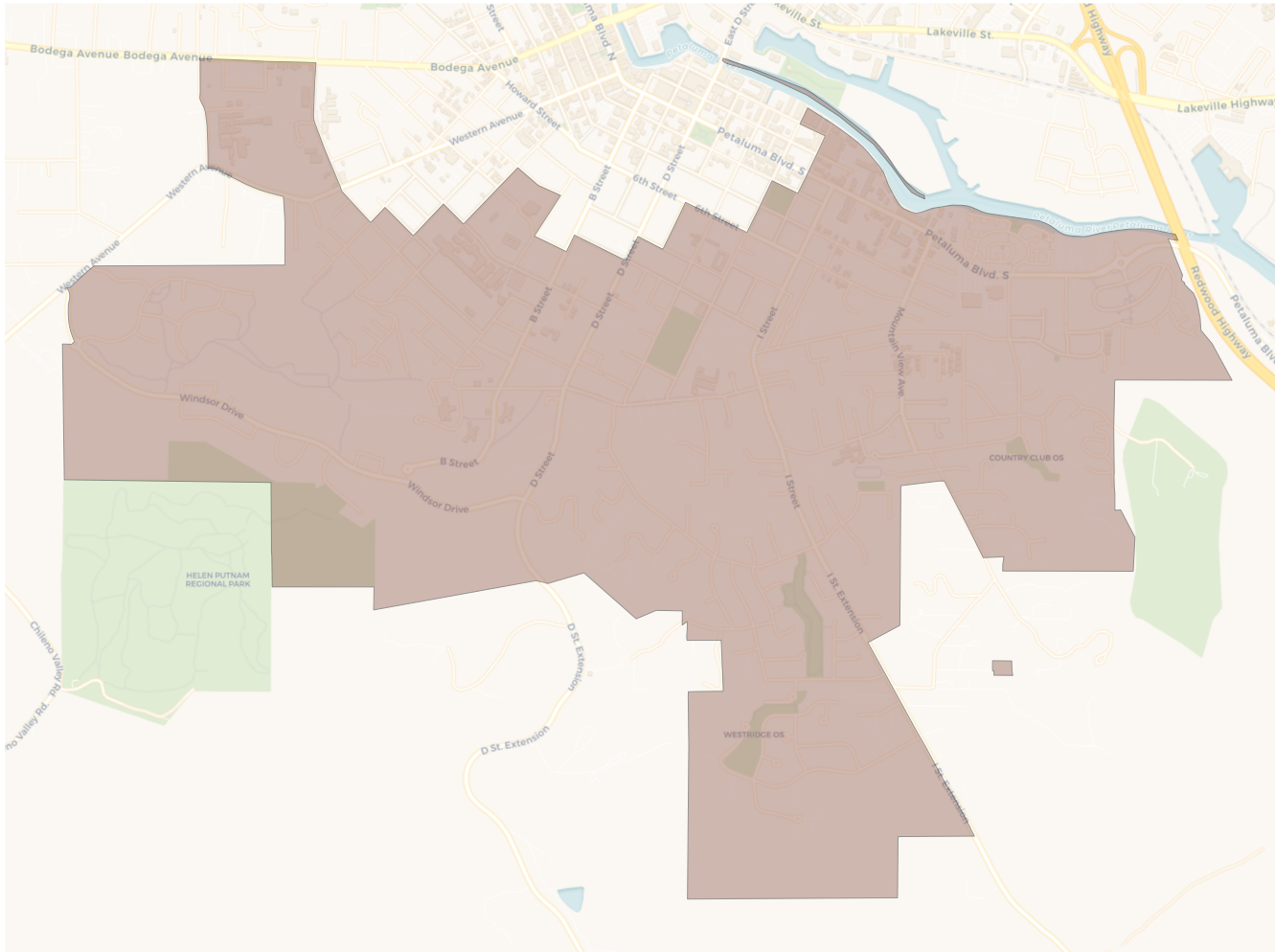


Citizen Voting Age Population

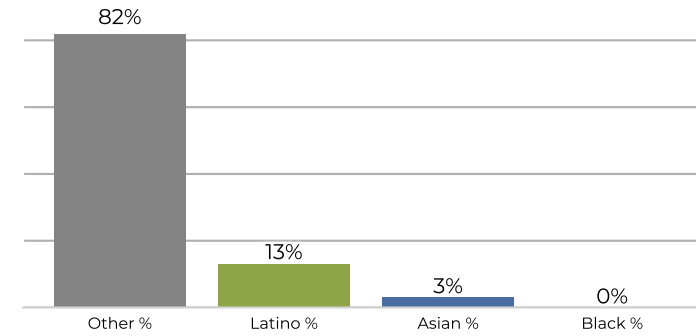


Population	Deviation	Deviation %	Other	Other %	Latino	Latino %	Asian	Asian %	Black	Black %
9,546	-428	-4.3%	5,981	62.7%	2,991	31.3%	377	3.9%	197	2.1%
Total CVAP	Other CVAP	Other CVAP %	Latino CVAP	Latino CVAP %	Asian CVAP	Asian CVAP %	Black CVAP	Black CVAP %		
6,332	4,802	75.8%	1,202	19.0%	223	3.5%	105	1.7%		

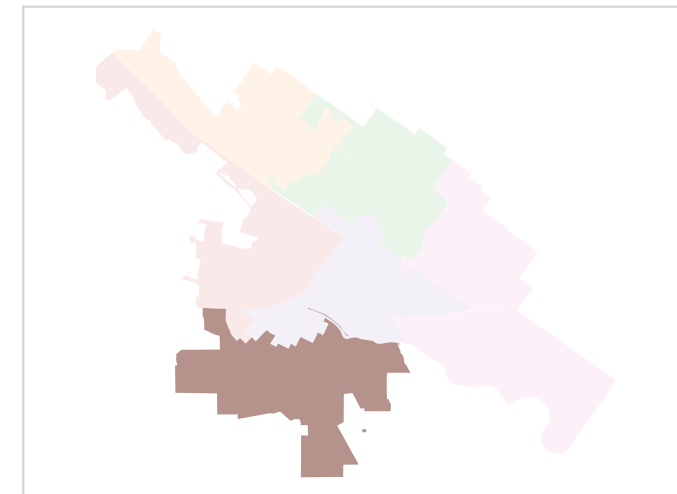
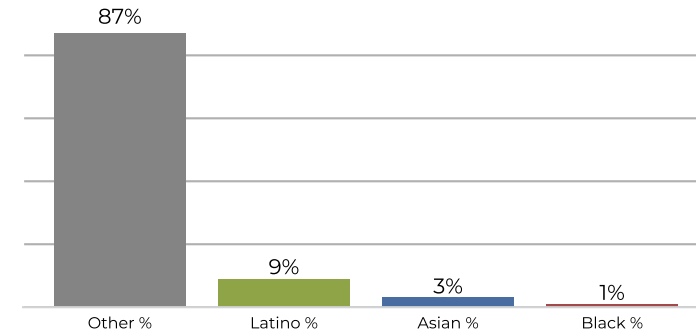
District 5



2020 Census

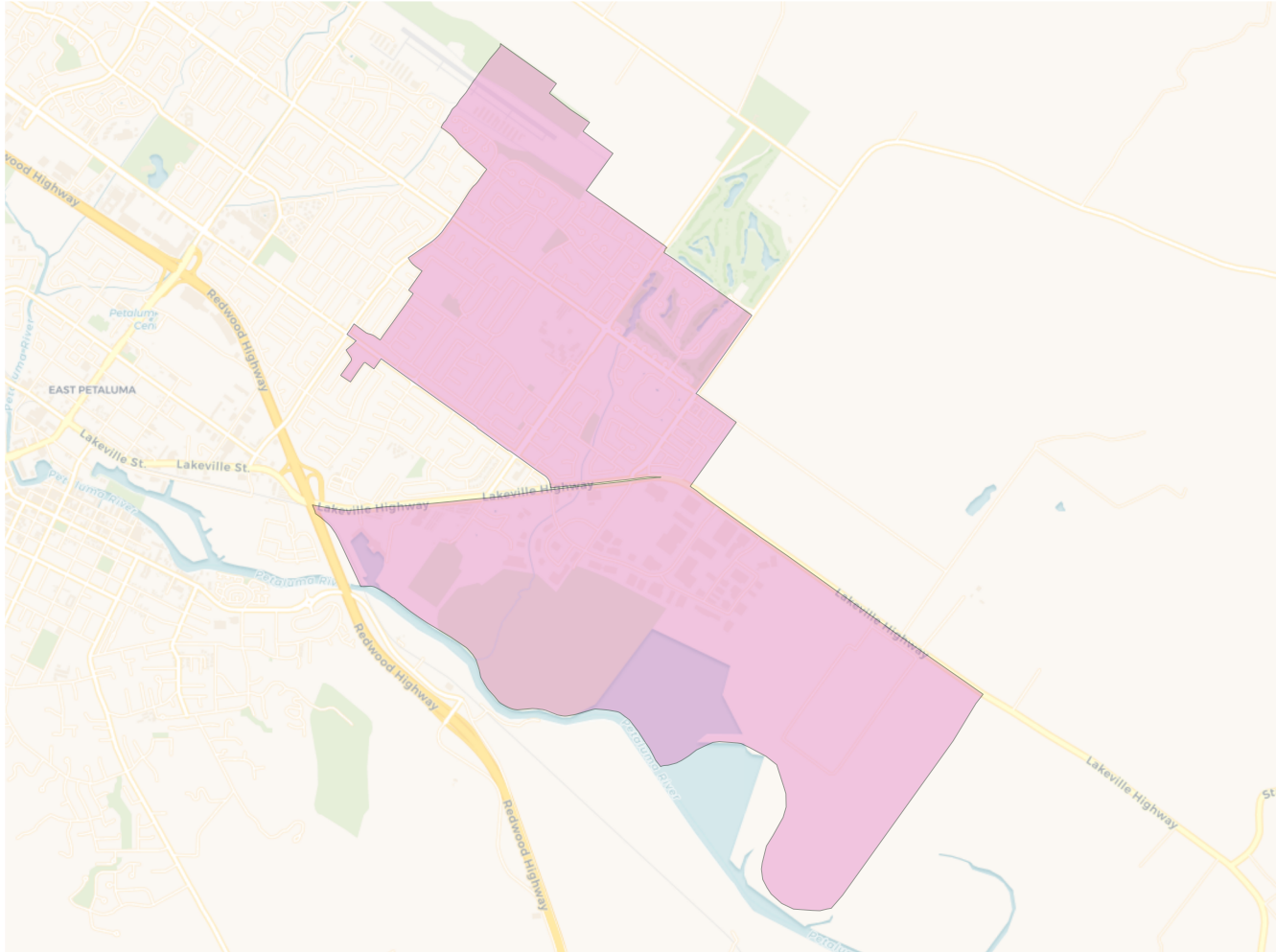


Citizen Voting Age Population

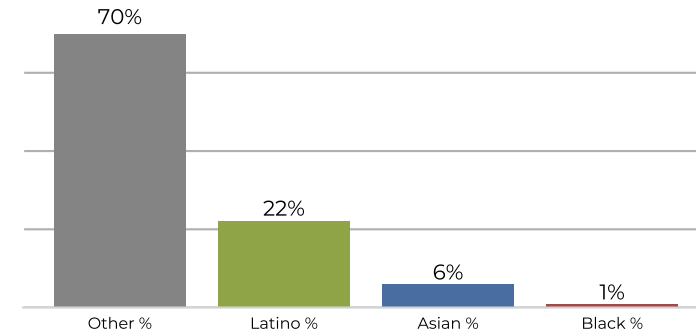


Population	Deviation	Deviation %	Other	Other %	Latino	Latino %	Asian	Asian %	Black	Black %
10,031	57	0.6%	8,234	82.1%	1,399	13.9%	324	3.2%	74	0.7%
Total CVAP	Other CVAP	Other CVAP %	Latino CVAP	Latino CVAP %	Asian CVAP	Asian CVAP %	Black CVAP	Black CVAP %		
7,921	6,890	87.0%	710	9.0%	245	3.1%	76	1.0%		

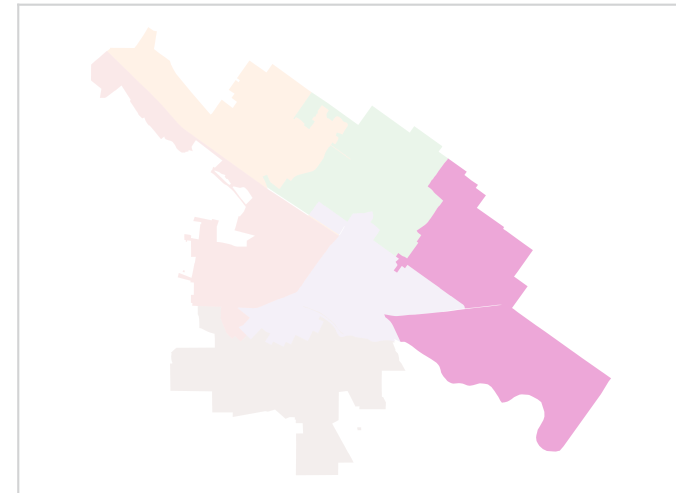
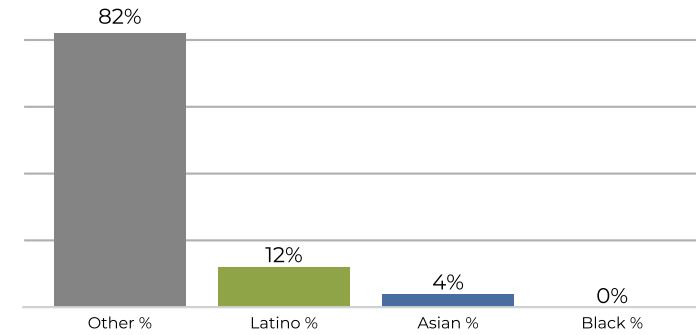
District 6



2020 Census



Citizen Voting Age Population



Population	Deviation	Deviation %	Other	Other %	Latino	Latino %	Asian	Asian %	Black	Black %
10,067	93	0.9%	7,045	70.0%	2,262	22.5%	600	6.0%	160	1.6%
Total CVAP	Other CVAP	Other CVAP %	Latino CVAP	Latino CVAP %	Asian CVAP	Asian CVAP %	Black CVAP	Black CVAP %		
7,447	6,131	82.3%	928	12.5%	351	4.7%	37	0.5%		