

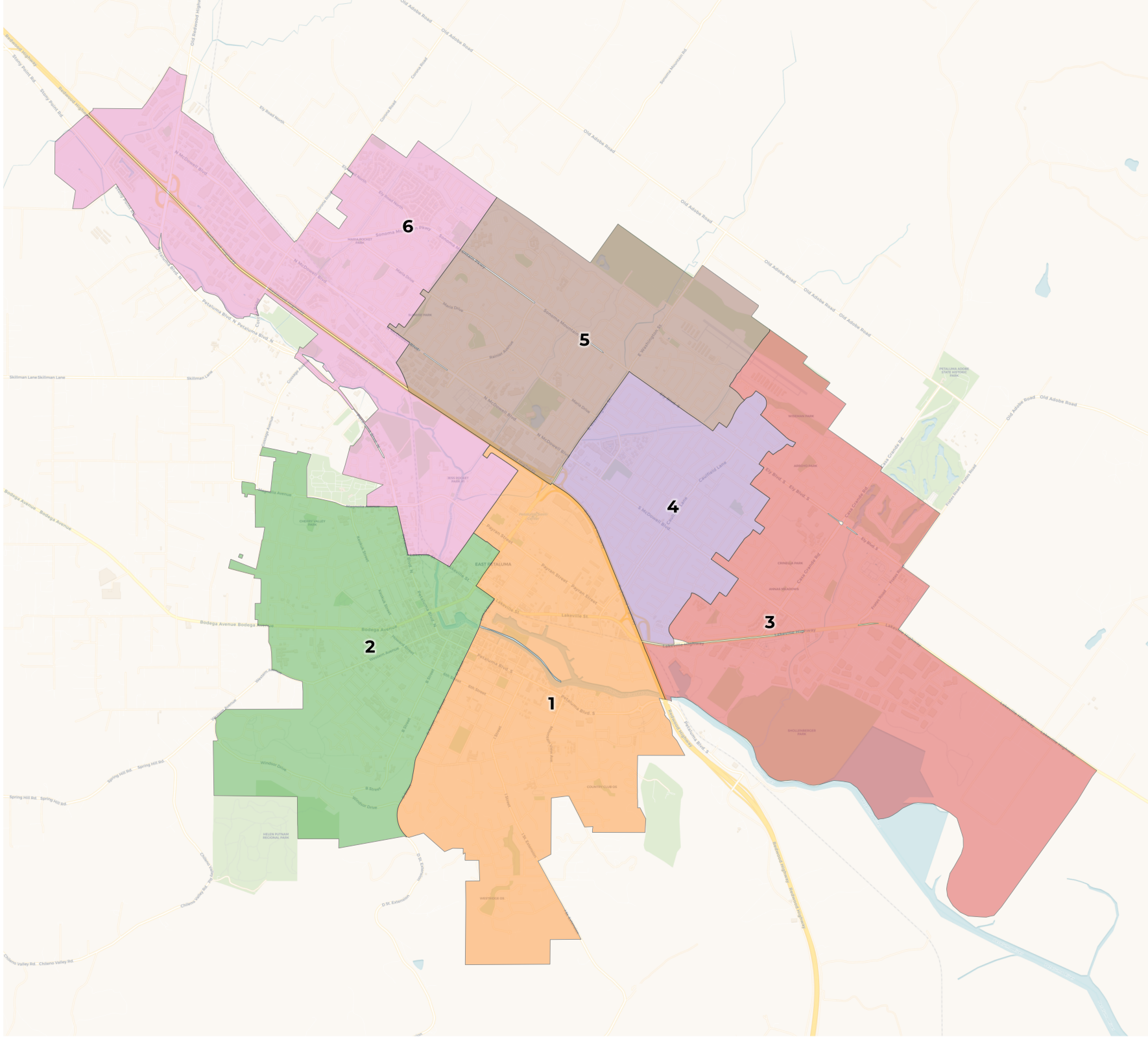


REDISTRICTING PARTNERS

City of Petaluma-Community

Map

nh_1



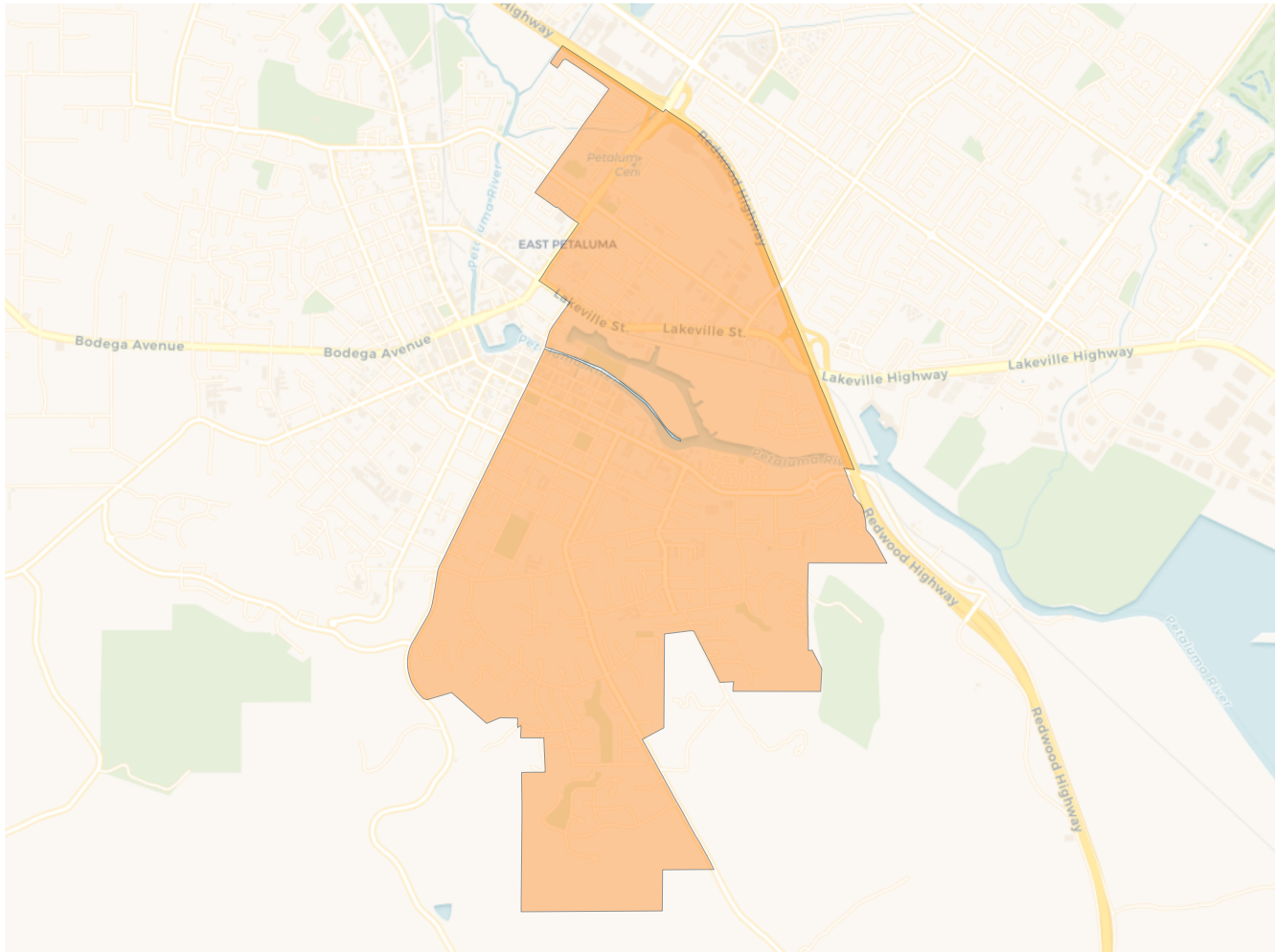
2020 Census

	1	2	3	4	5	6
Population	10,013	9,955	9,935	9,980	10,004	9,959
Deviation	39	-19	-39	6	30	-15
Deviation %	0.4%	-0.2%	-0.4%	0.1%	0.3%	-0.2%
Other	7,697	7,976	6,311	6,684	7,246	6,700
Other %	76.9%	80.1%	63.5%	67.0%	72.4%	67.3%
Latino	1,881	1,632	2,784	2,733	2,080	2,524
Latino %	18.8%	16.4%	28.0%	27.4%	20.8%	25.3%
Asian	325	258	620	431	581	597
Asian %	3.2%	2.6%	6.2%	4.3%	5.8%	6.0%
Black	110	89	220	132	97	138
Black %	1.1%	0.9%	2.2%	1.3%	1.0%	1.4%

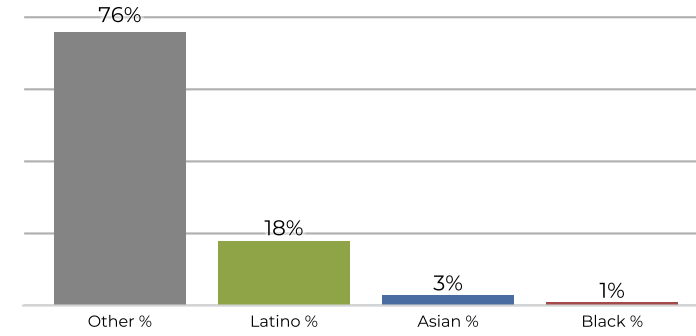
Citizen Voting Age Population (CVAP)

	1	2	3	4	5	6
Total CVAP	7,259	7,620	6,802	7,387	7,172	7,082
Other CVAP	6,077	6,364	5,410	5,910	5,896	5,625
Other CVAP %	83.7%	83.5%	79.5%	80.0%	82.2%	79.4%
Latino CVAP	896	963	931	1,181	876	983
Latino CVAP %	12.3%	12.6%	13.7%	16.0%	12.2%	13.9%
Asian CVAP	182	244	372	232	267	367
Asian CVAP %	2.5%	3.2%	5.5%	3.1%	3.7%	5.2%
Black CVAP	104	49	89	64	133	107
Black CVAP %	1.4%	0.6%	1.3%	0.9%	1.9%	1.5%

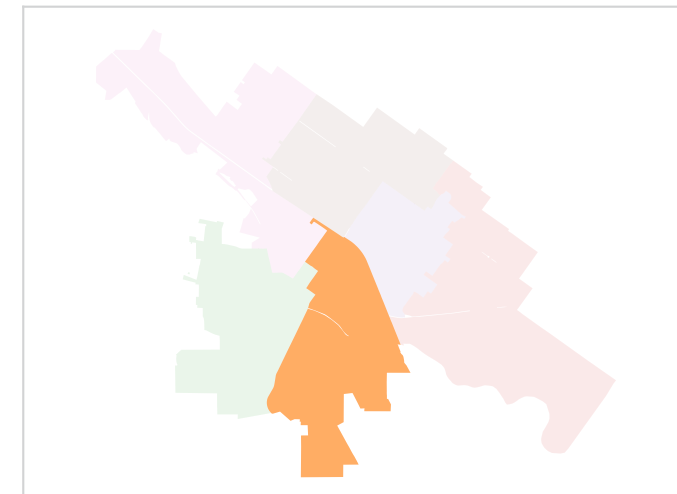
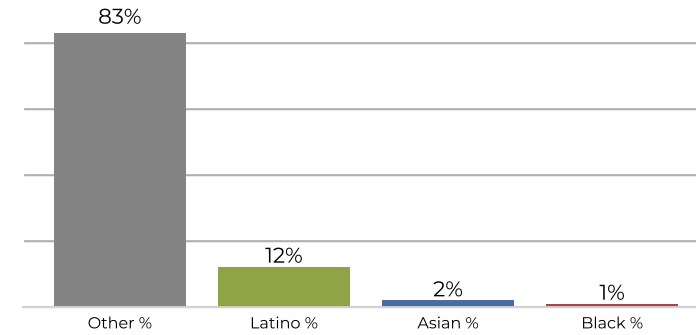
District 1



2020 Census

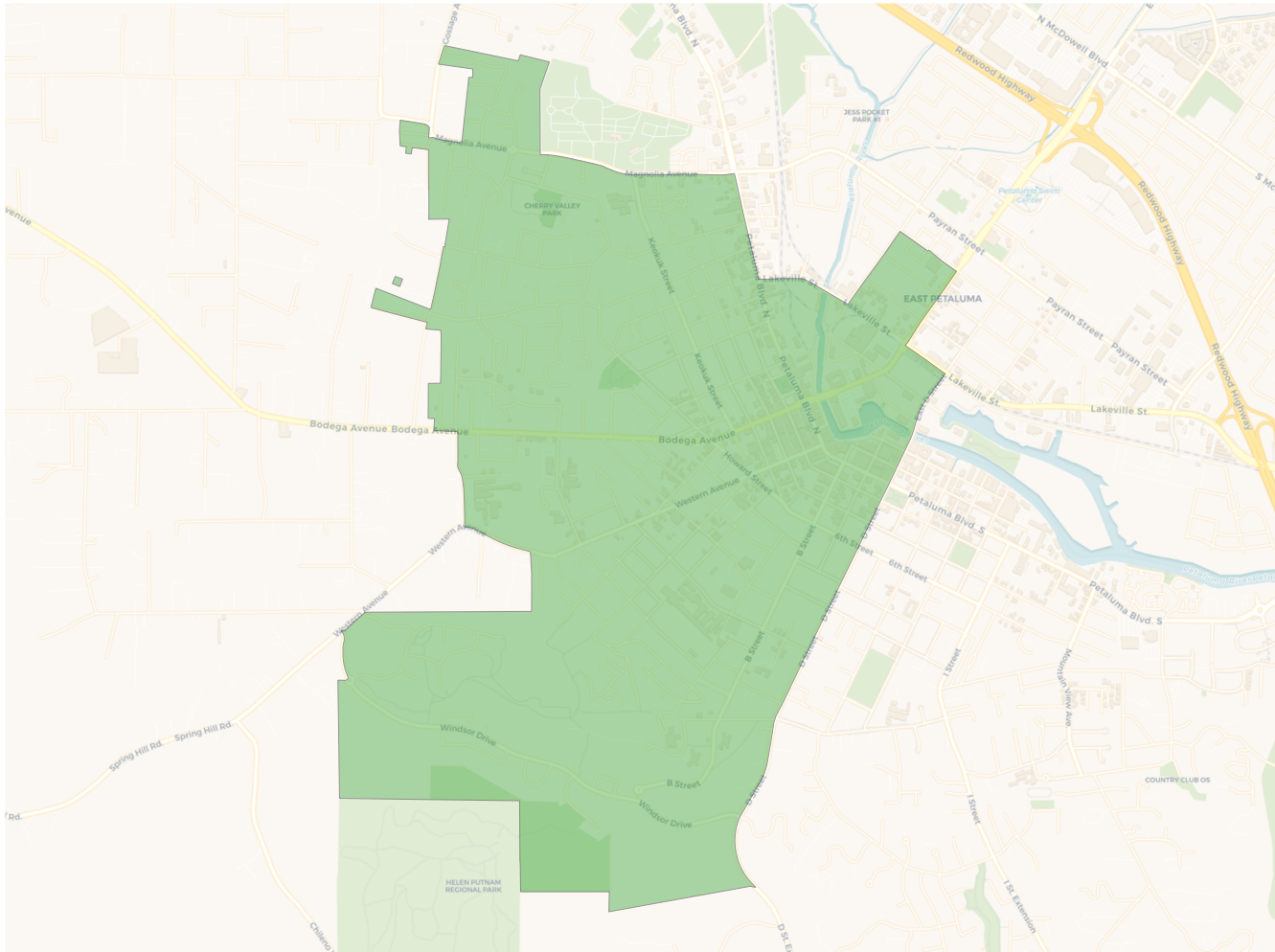


Citizen Voting Age Population

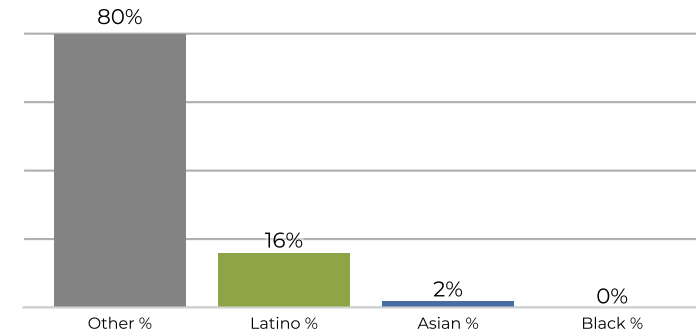


Population	Deviation	Deviation %	Other	Other %	Latino	Latino %	Asian	Asian %	Black	Black %
10,013	39	0.4%	7,697	76.9%	1,881	18.8%	325	3.2%	110	1.1%
Total CVAP	Other CVAP	Other CVAP %	Latino CVAP	Latino CVAP %	Asian CVAP	Asian CVAP %	Black CVAP	Black CVAP %		
7,259	6,077	83.7%	896	12.3%	182	2.5%	104	1.4%		

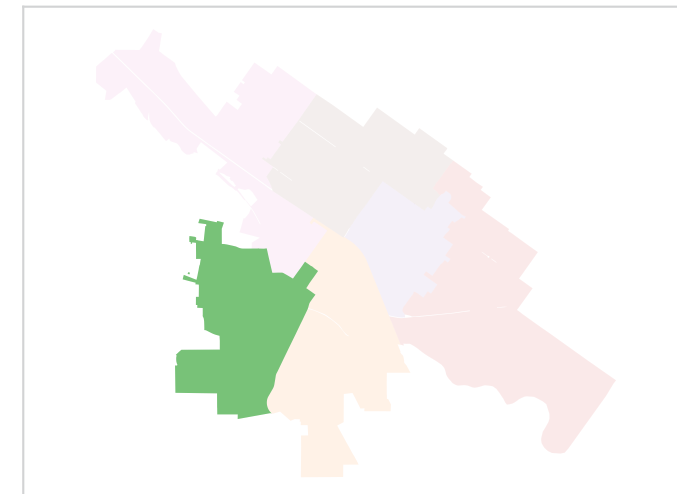
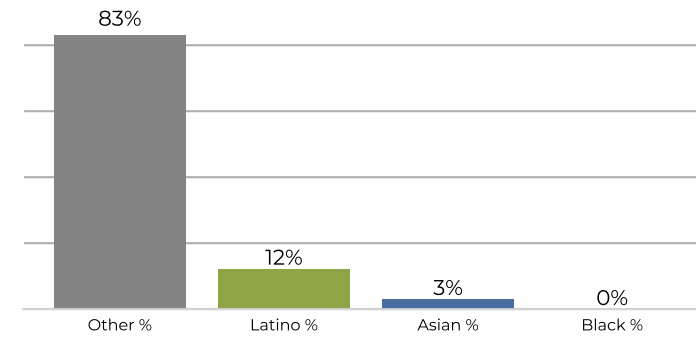
District 2



2020 Census

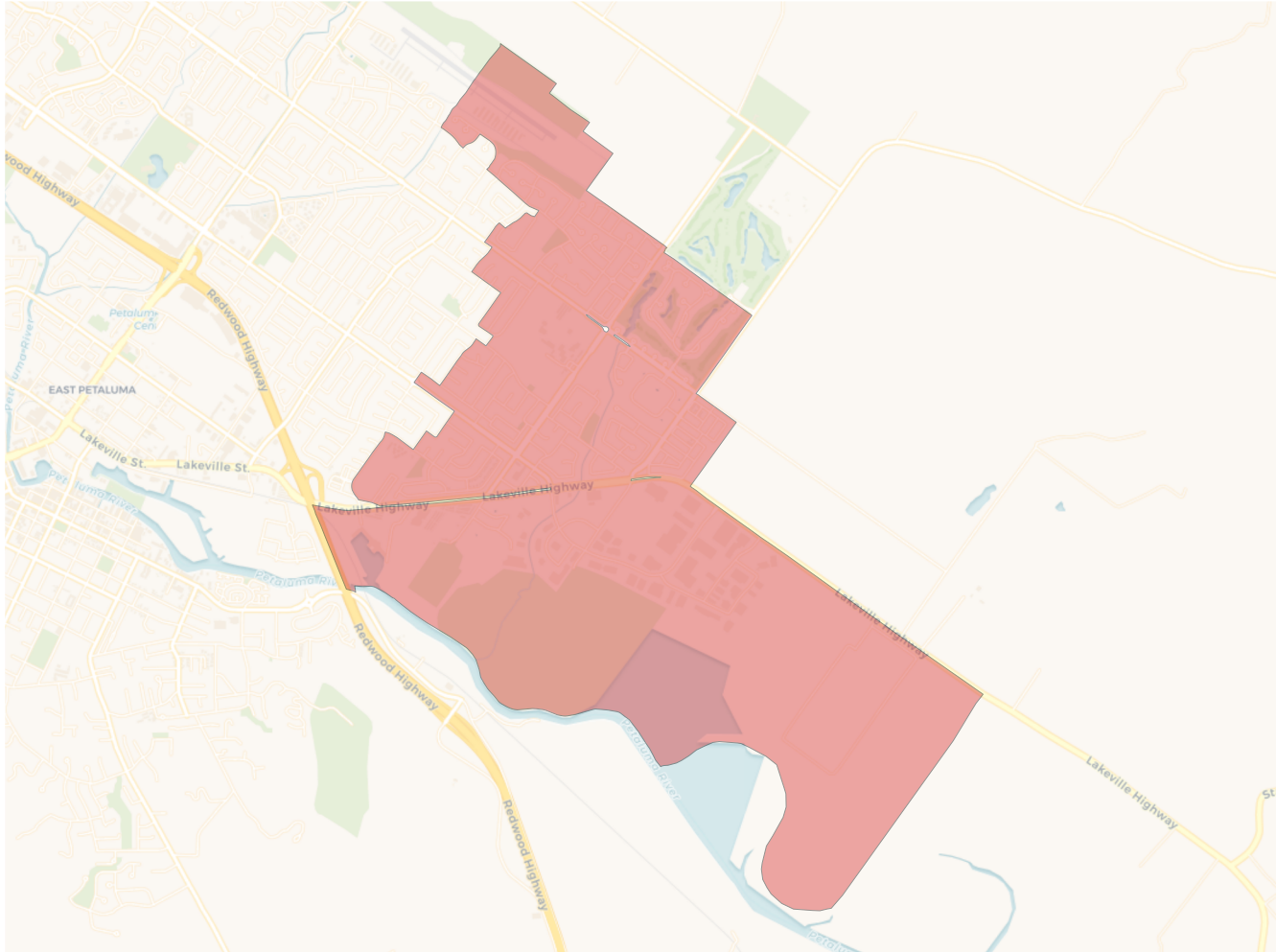


Citizen Voting Age Population

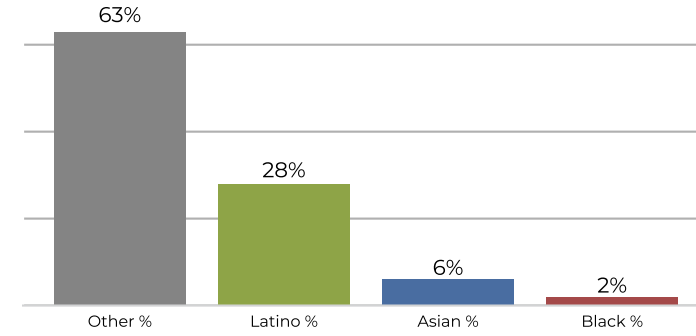


Population	Deviation	Deviation %	Other	Other %	Latino	Latino %	Asian	Asian %	Black	Black %
9,955	-19	-0.2%	7,976	80.1%	1,632	16.4%	258	2.6%	89	0.9%
Total CVAP	Other CVAP	Other CVAP %	Latino CVAP	Latino CVAP %	Asian CVAP	Asian CVAP %	Black CVAP	Black CVAP %		
7,620	6,364	83.5%	963	12.6%	244	3.2%	49	0.6%		

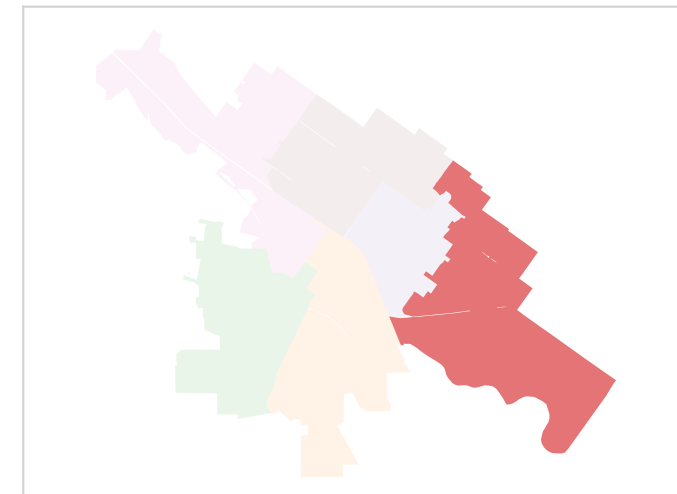
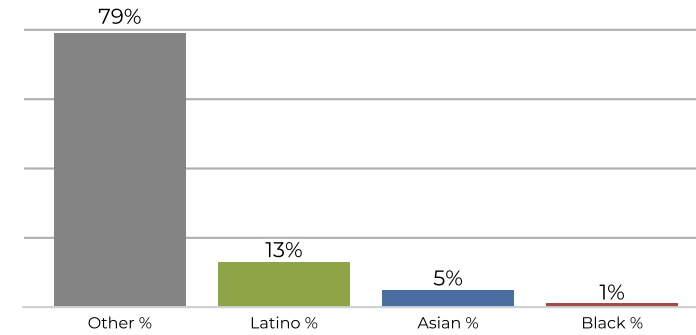
District 3



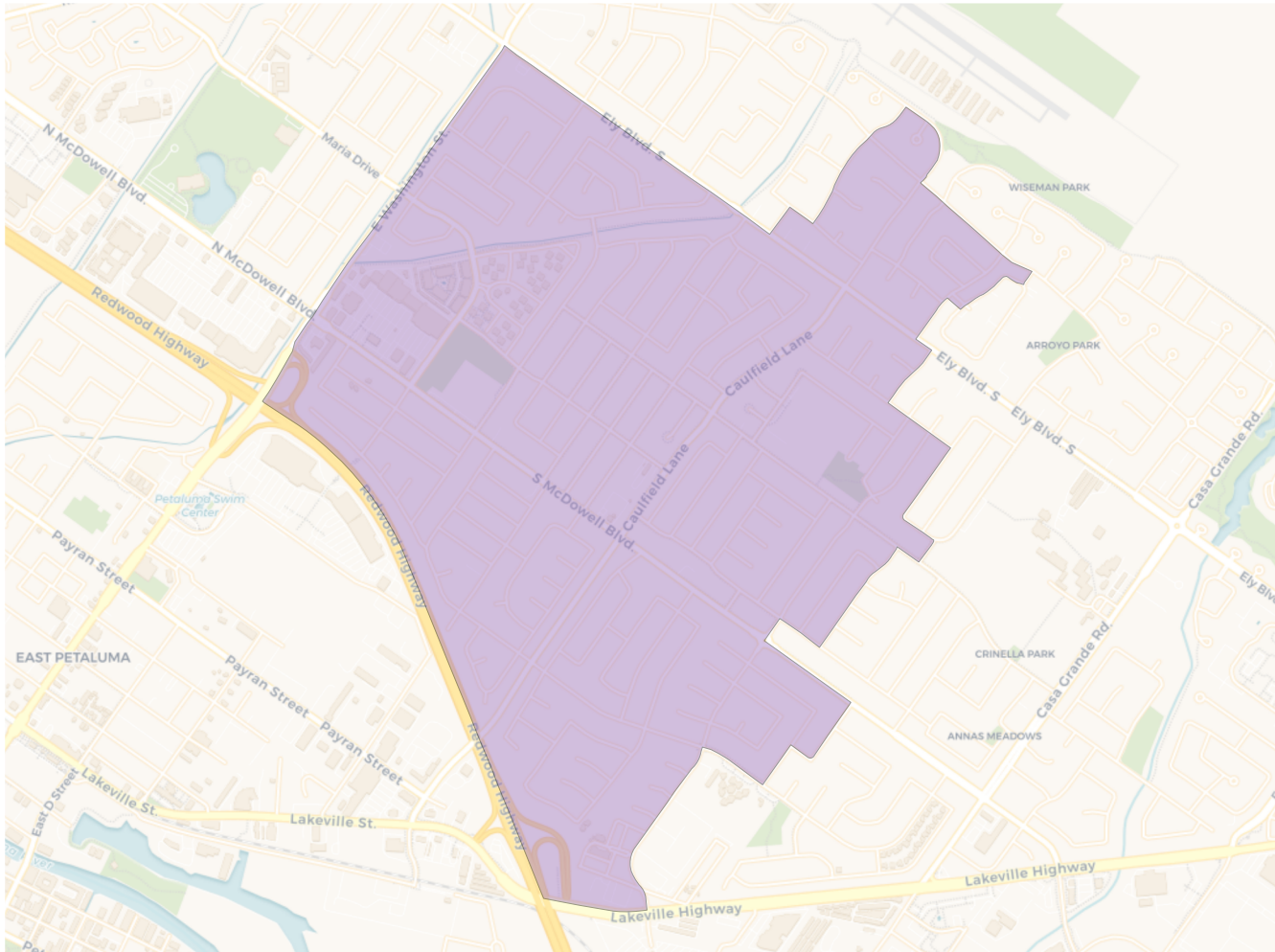
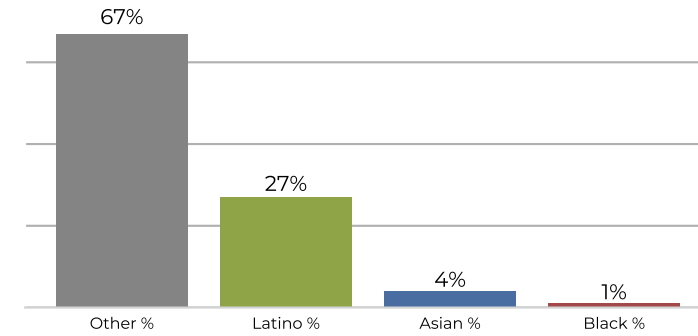
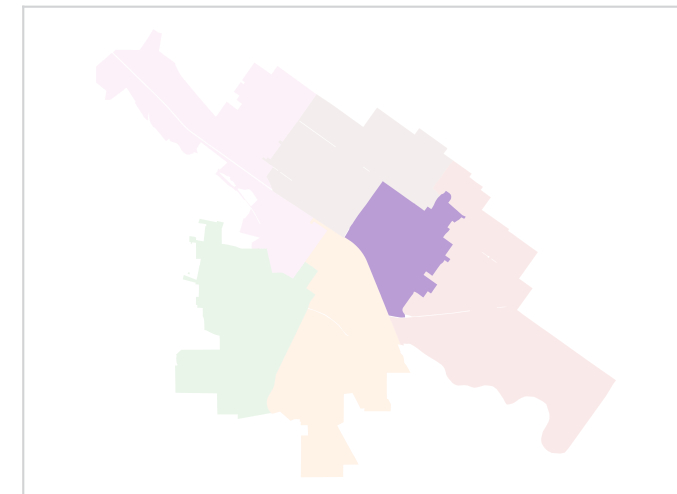
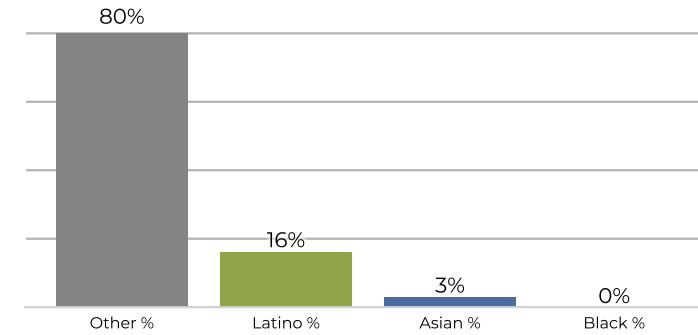
2020 Census



Citizen Voting Age Population

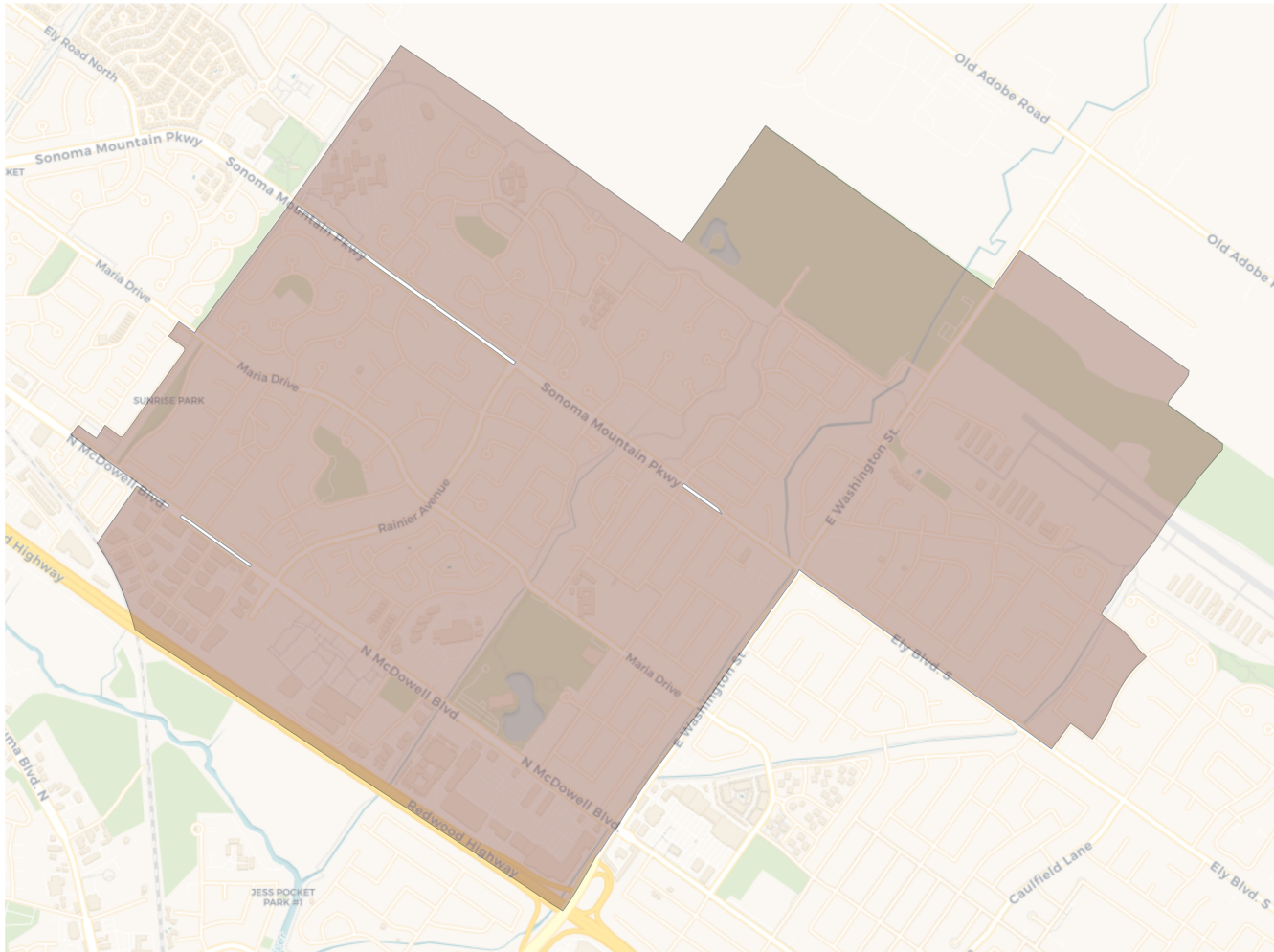


Population	Deviation	Deviation %	Other	Other %	Latino	Latino %	Asian	Asian %	Black	Black %
9,935	-39	-0.4%	6,311	63.5%	2,784	28.0%	620	6.2%	220	2.2%
Total CVAP	Other CVAP	Other CVAP %	Latino CVAP	Latino CVAP %	Asian CVAP	Asian CVAP %	Black CVAP	Black CVAP %		
6,802	5,410	79.5%	931	13.7%	372	5.5%	89	1.3%		

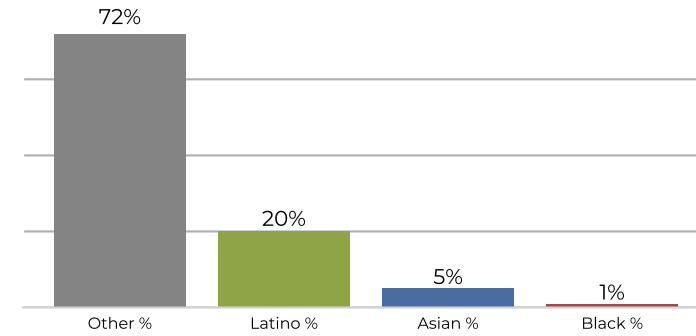
District 4

2020 Census

Citizen Voting Age Population


Population	Deviation	Deviation %	Other	Other %	Latino	Latino %	Asian	Asian %	Black	Black %
9,980	6	0.1%	6,684	67.0%	2,733	27.4%	431	4.3%	132	1.3%
Total CVAP	Other CVAP	Other CVAP %	Latino CVAP	Latino CVAP %	Asian CVAP	Asian CVAP %	Black CVAP	Black CVAP %		
7,387	5,910	80.0%	1,181	16.0%	232	3.1%	64	0.9%		

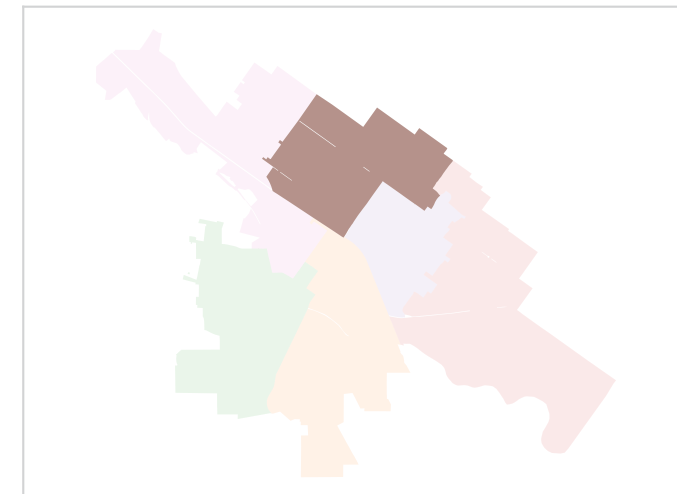
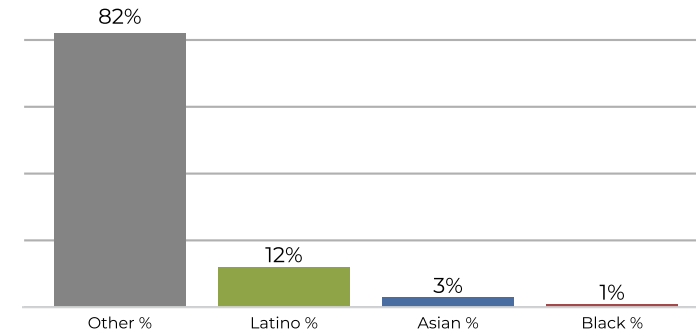
District 5



2020 Census

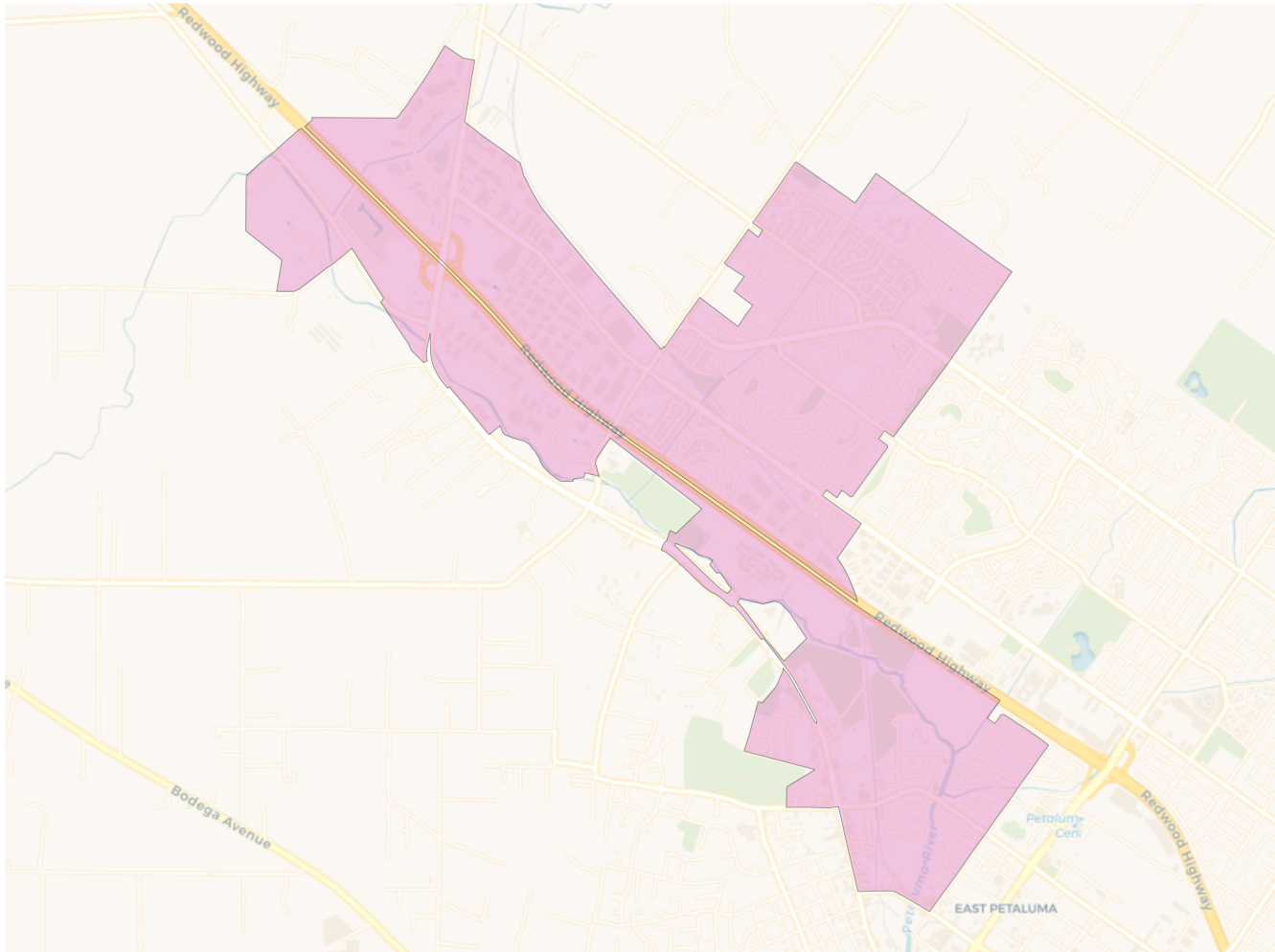


Citizen Voting Age Population

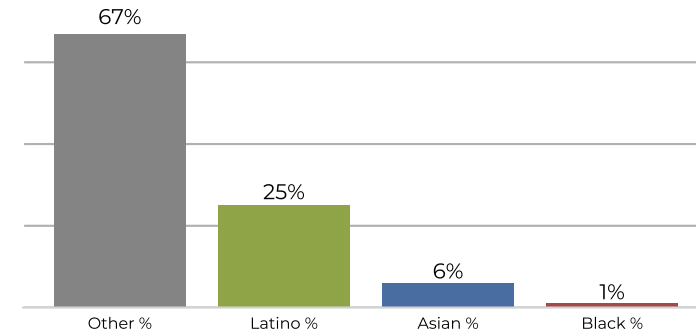


Population	Deviation	Deviation %	Other	Other %	Latino	Latino %	Asian	Asian %	Black	Black %
10,004	30	0.3%	7,246	72.4%	2,080	20.8%	581	5.8%	97	1.0%
Total CVAP	Other CVAP	Other CVAP %	Latino CVAP	Latino CVAP %	Asian CVAP	Asian CVAP %	Black CVAP	Black CVAP %		
7,172	5,896	82.2%	876	12.2%	267	3.7%	133	1.9%		

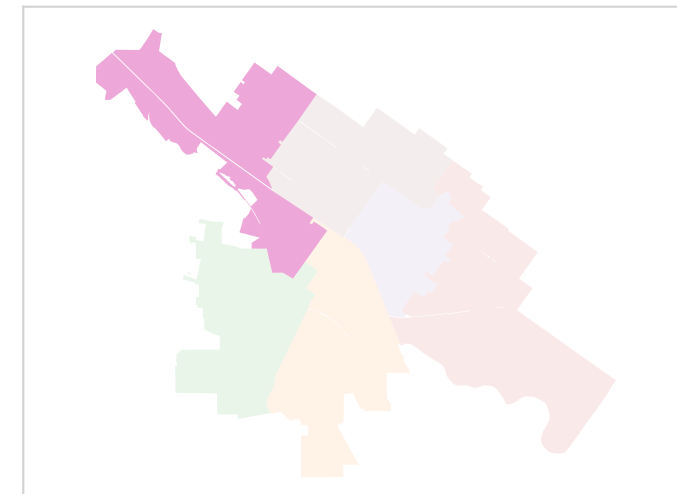
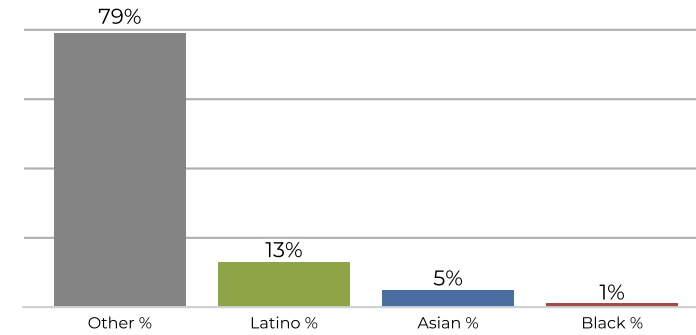
District 6



2020 Census



Citizen Voting Age Population



Population	Deviation	Deviation %	Other	Other %	Latino	Latino %	Asian	Asian %	Black	Black %
9,959	-15	-0.2%	6,700	67.3%	2,524	25.3%	597	6.0%	138	1.4%
Total CVAP	Other CVAP	Other CVAP %	Latino CVAP	Latino CVAP %	Asian CVAP	Asian CVAP %	Black CVAP	Black CVAP %		
7,082	5,625	79.4%	983	13.9%	367	5.2%	107	1.5%		