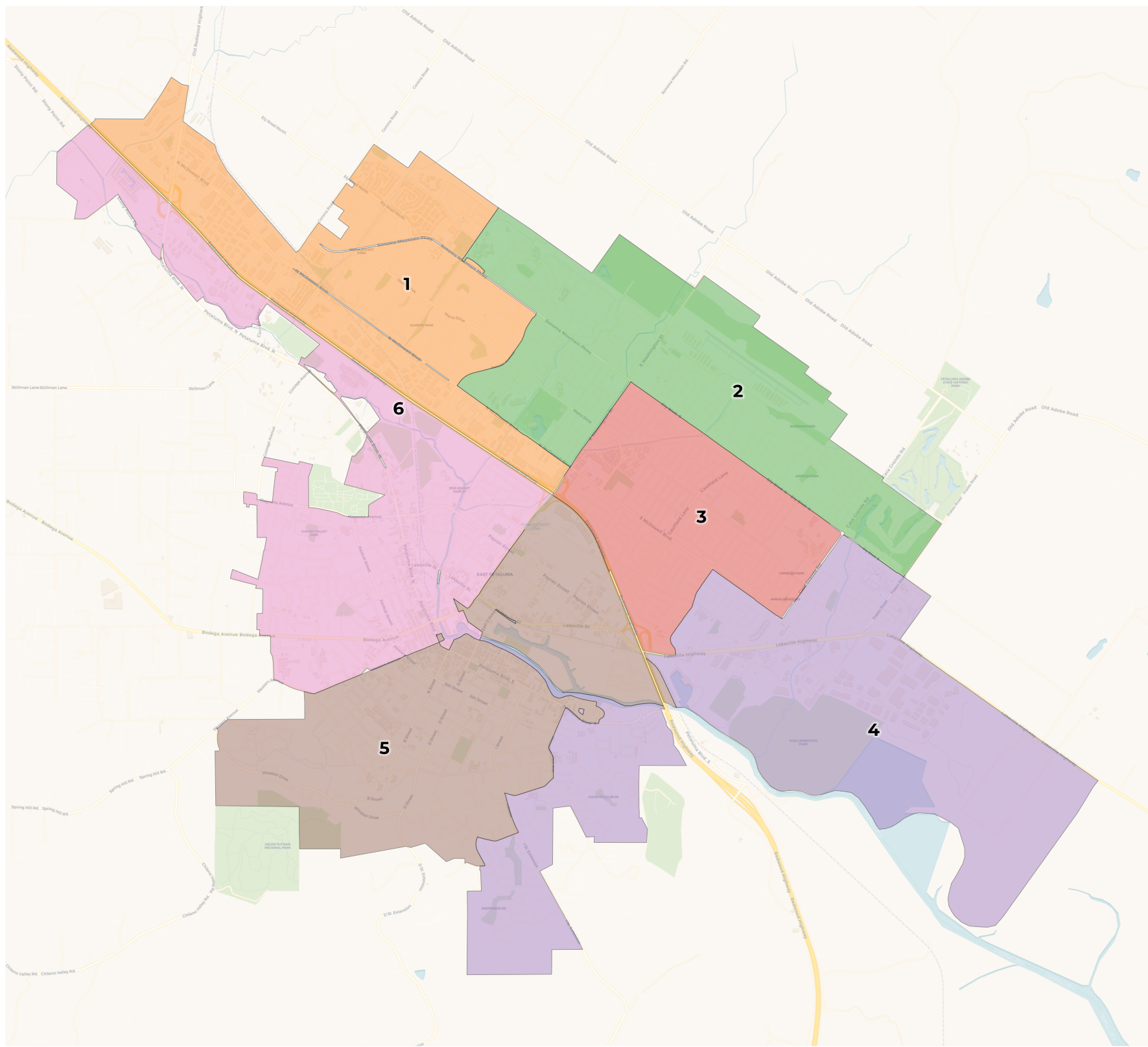




# REDISTRICTING PARTNERS

## City of Petaluma-Community Map

suggestion\_1



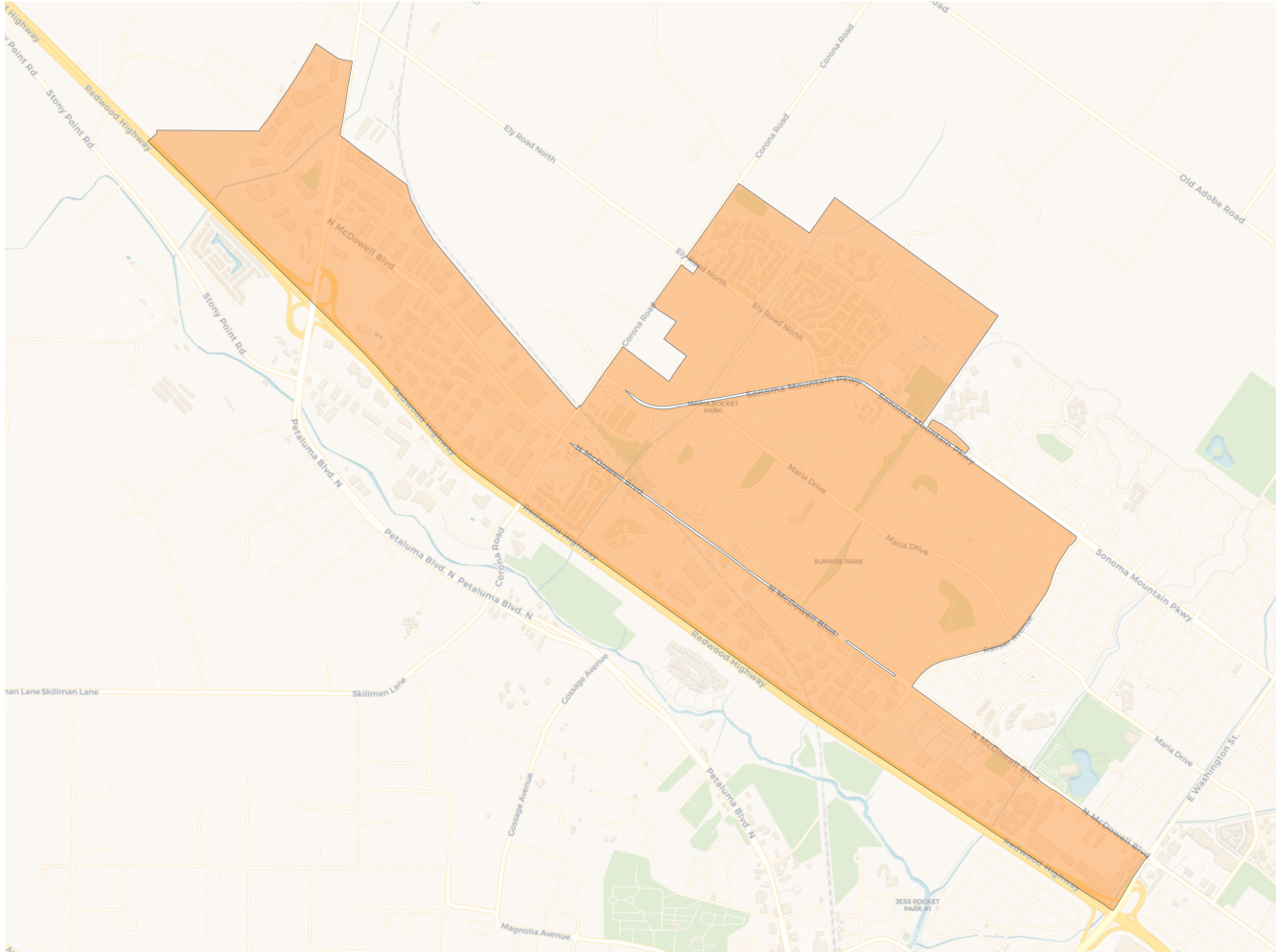
**2020 Census**

	1	2	3	4	5	6
Population	9,975	10,239	10,404	9,741	9,963	9,483
Deviation	7	271	436	-227	-5	-485
Deviation %	0.1%	2.7%	4.4%	-2.3%	-0.1%	-4.9%
Other	6,896	7,607	6,896	6,544	7,714	6,937
Other %	69.1%	74.3%	66.3%	67.2%	77.4%	73.2%
Latino	2,260	1,924	2,891	2,473	1,866	2,205
Latino %	22.7%	18.8%	27.8%	25.4%	18.7%	23.3%
Asian	687	622	459	528	281	231
Asian %	6.9%	6.1%	4.4%	5.4%	2.8%	2.4%
Black	132	86	158	196	102	110
Black %	1.3%	0.8%	1.5%	2.0%	1.0%	1.2%

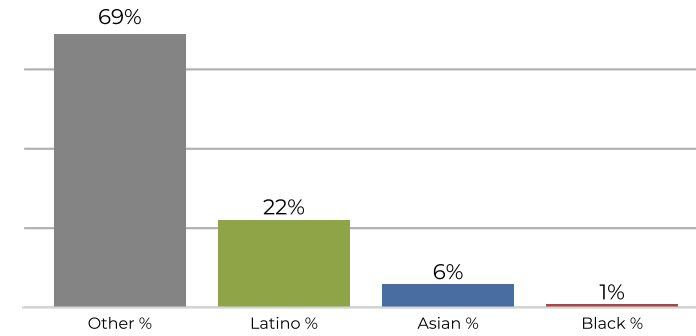
**Citizen Voting Age Population (CVAP)**

	1	2	3	4	5	6
Total CVAP	6,968	7,720	7,873	6,075	7,875	6,781
Other CVAP	5,575	6,417	6,320	4,757	6,615	5,587
Other CVAP %	80.0%	83.1%	80.3%	78.3%	84.0%	82.4%
Latino CVAP	911	863	1,277	853	989	926
Latino CVAP %	13.1%	11.2%	16.2%	14.0%	12.6%	13.7%
Asian CVAP	400	300	234	329	219	179
Asian CVAP %	5.7%	3.9%	3.0%	5.4%	2.8%	2.6%
Black CVAP	82	140	42	136	52	89
Black CVAP %	1.2%	1.8%	0.5%	2.2%	0.7%	1.3%

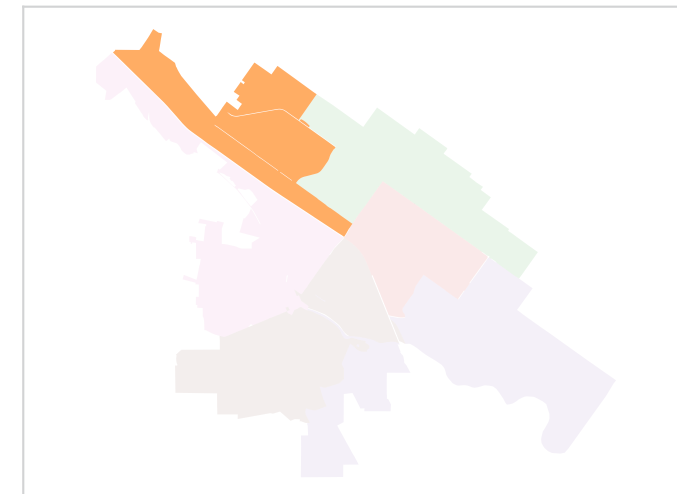
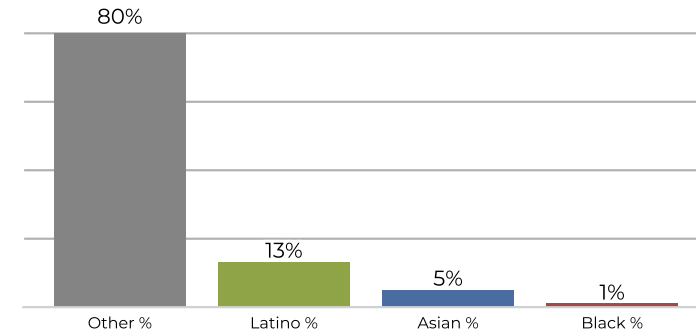
**District 1**



**2020 Census**

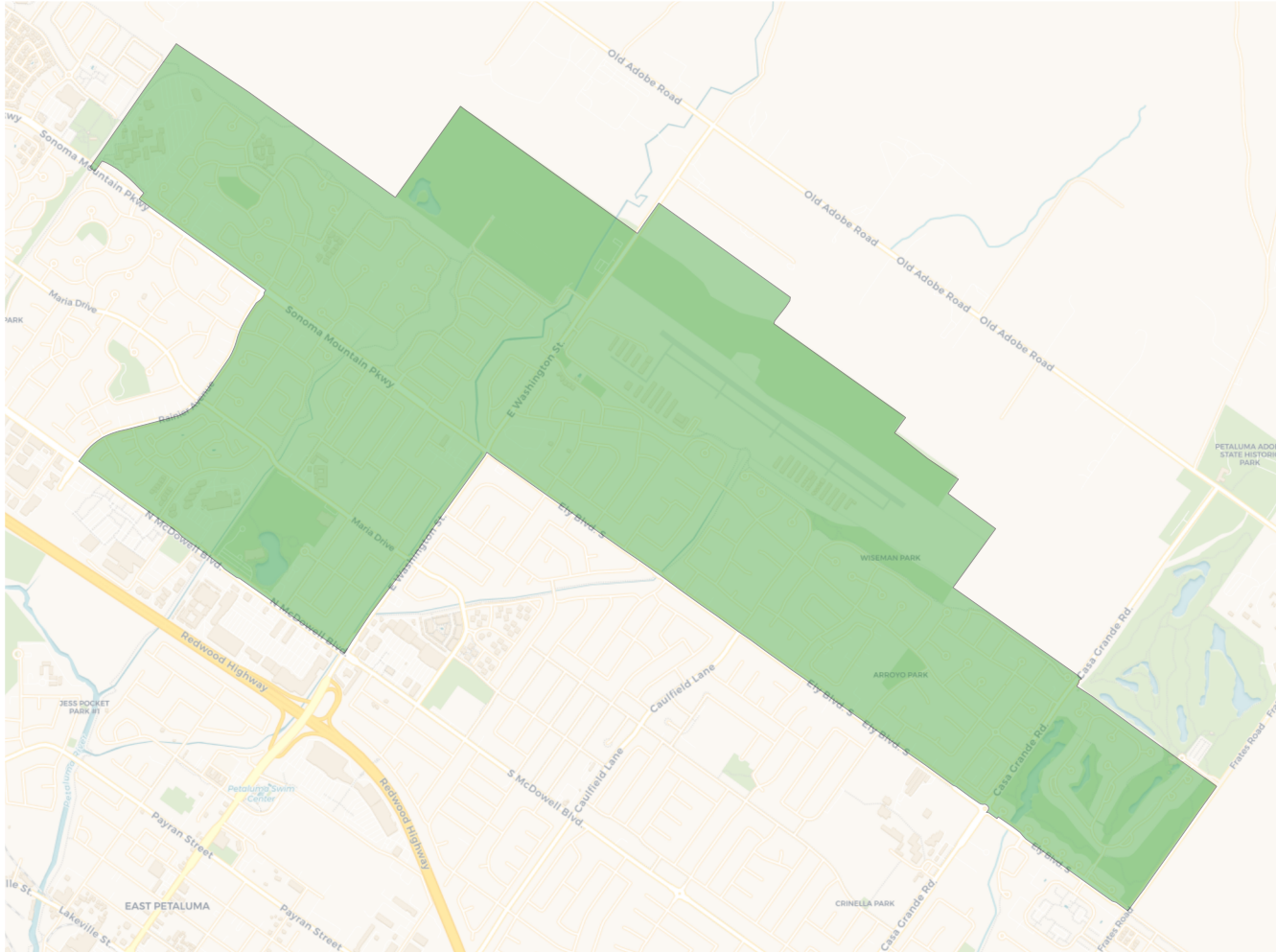


**Citizen Voting Age Population**

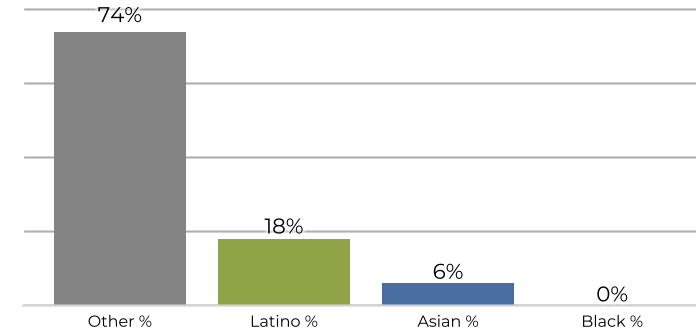


Population	Deviation	Deviation %	Other	Other %	Latino	Latino %	Asian	Asian %	Black	Black %
9,975	7	0.1%	6,896	69.1%	2,260	22.7%	687	6.9%	132	1.3%
Total CVAP	Other CVAP	Other CVAP %	Latino CVAP	Latino CVAP %	Asian CVAP	Asian CVAP %	Black CVAP	Black CVAP %		
6,968	5,575	80.0%	911	13.1%	400	5.7%	82	1.2%		

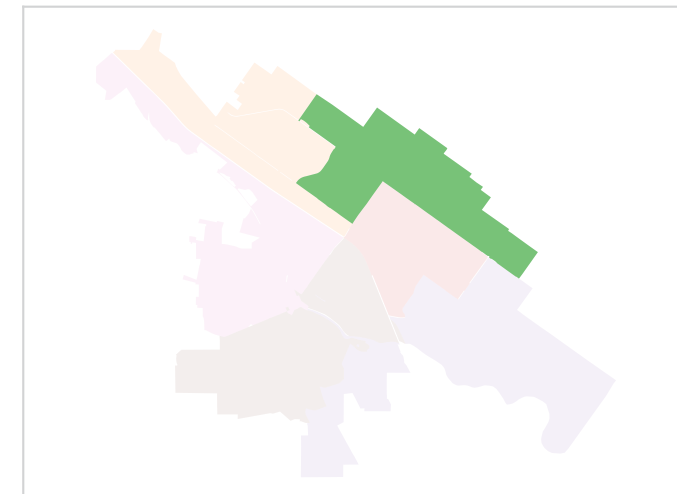
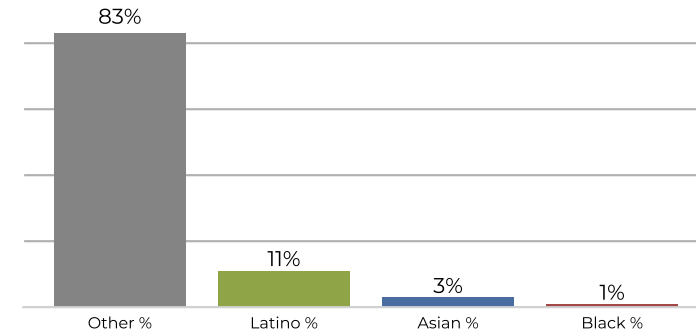
## District 2



## 2020 Census



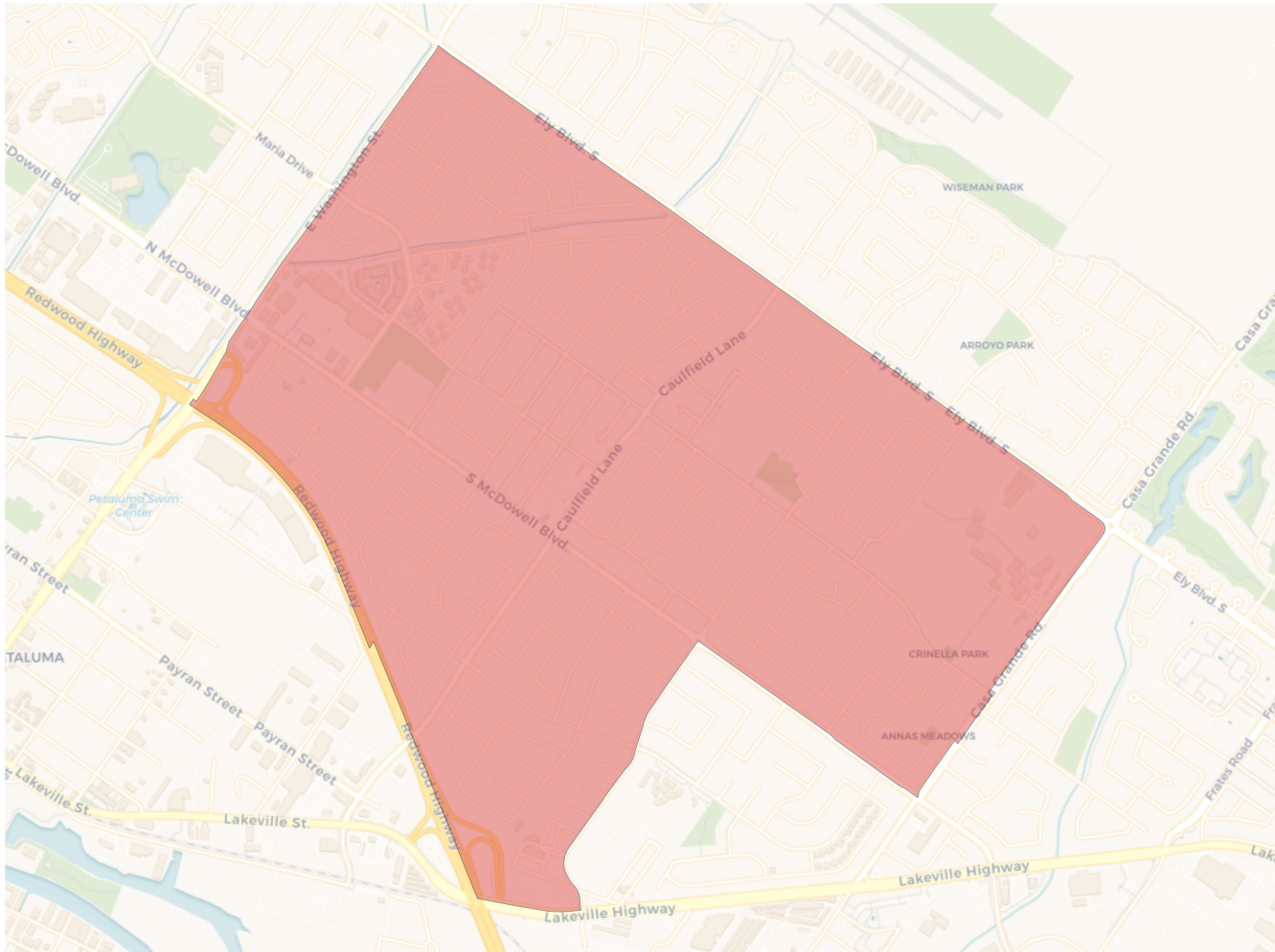
## Citizen Voting Age Population



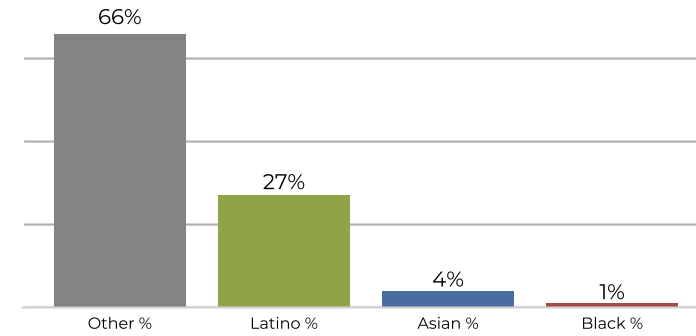
Population	Deviation	Deviation %	Other	Other %	Latino	Latino %	Asian	Asian %	Black	Black %
10,239	271	2.7%	7,607	74.3%	1,924	18.8%	622	6.1%	86	0.8%
Total CVAP	Other CVAP	Other CVAP %	Latino CVAP	Latino CVAP %	Asian CVAP	Asian CVAP %	Black CVAP	Black CVAP %		
7,720	6,417	83.1%	863	11.2%	300	3.9%	140	1.8%		



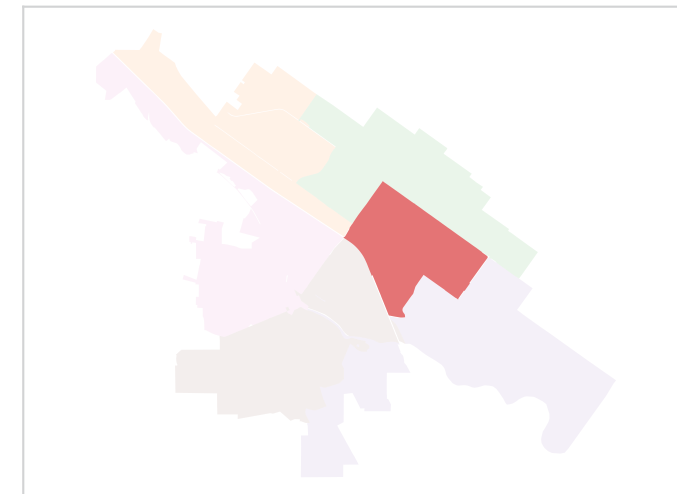
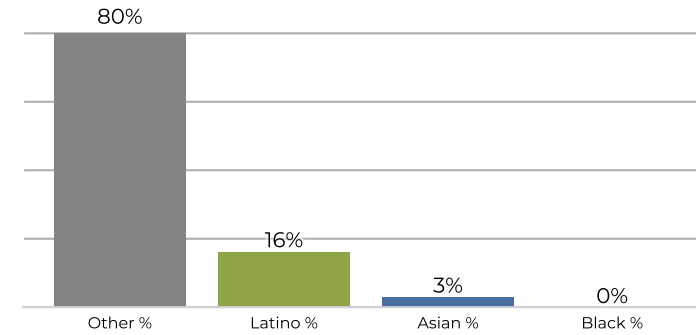
**District 3**



**2020 Census**

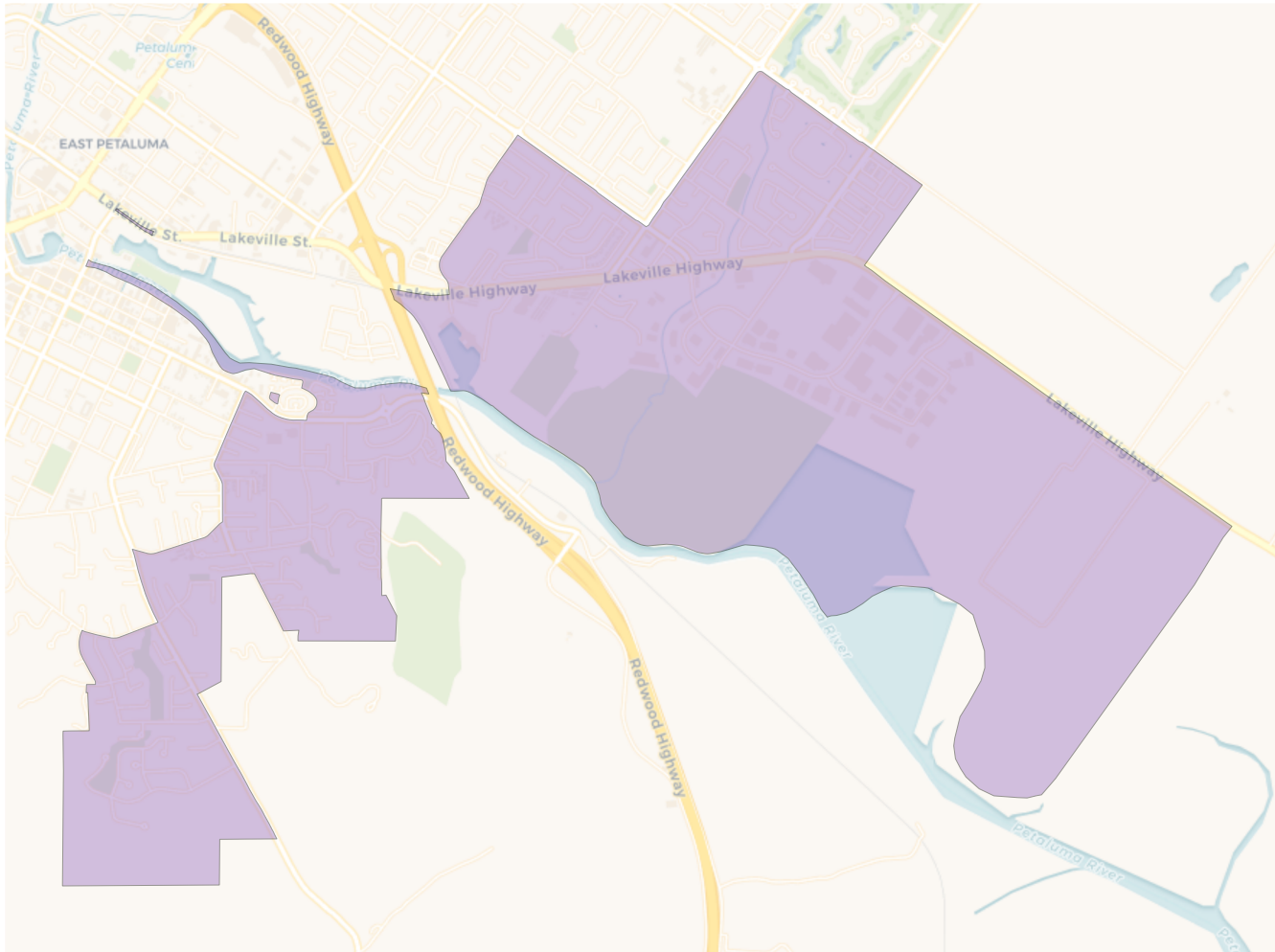


**Citizen Voting Age Population**

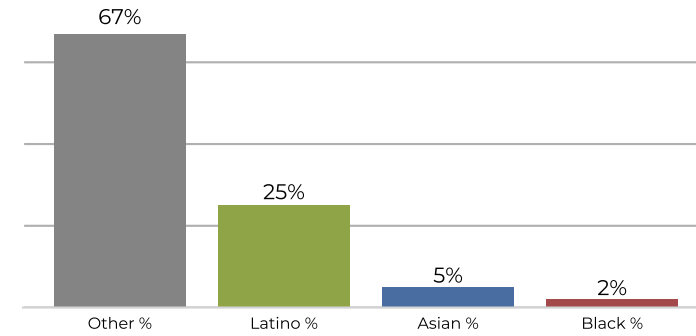


Population	Deviation	Deviation %	Other	Other %	Latino	Latino %	Asian	Asian %	Black	Black %
10,404	436	4.4%	6,896	66.3%	2,891	27.8%	459	4.4%	158	1.5%
Total CVAP	Other CVAP	Other CVAP %	Latino CVAP	Latino CVAP %	Asian CVAP	Asian CVAP %	Black CVAP	Black CVAP %		
7,873	6,320	80.3%	1,277	16.2%	234	3.0%	42	0.5%		

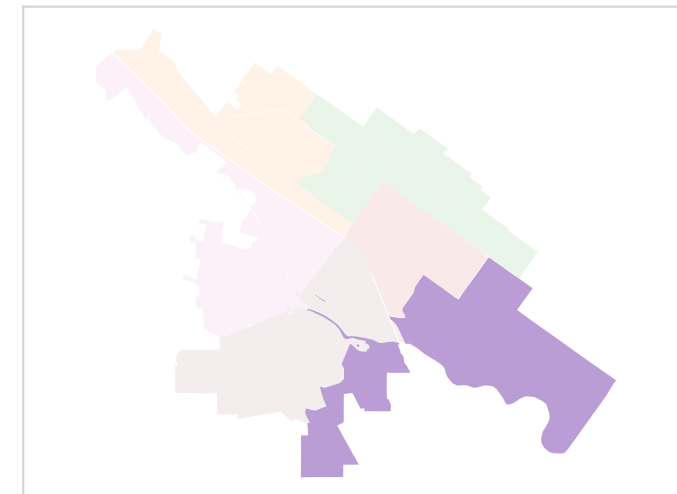
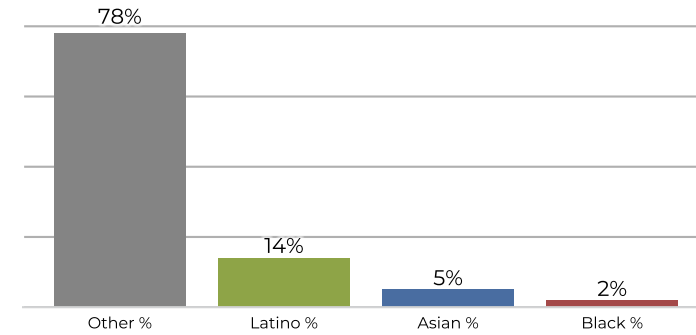
**District 4**



**2020 Census**

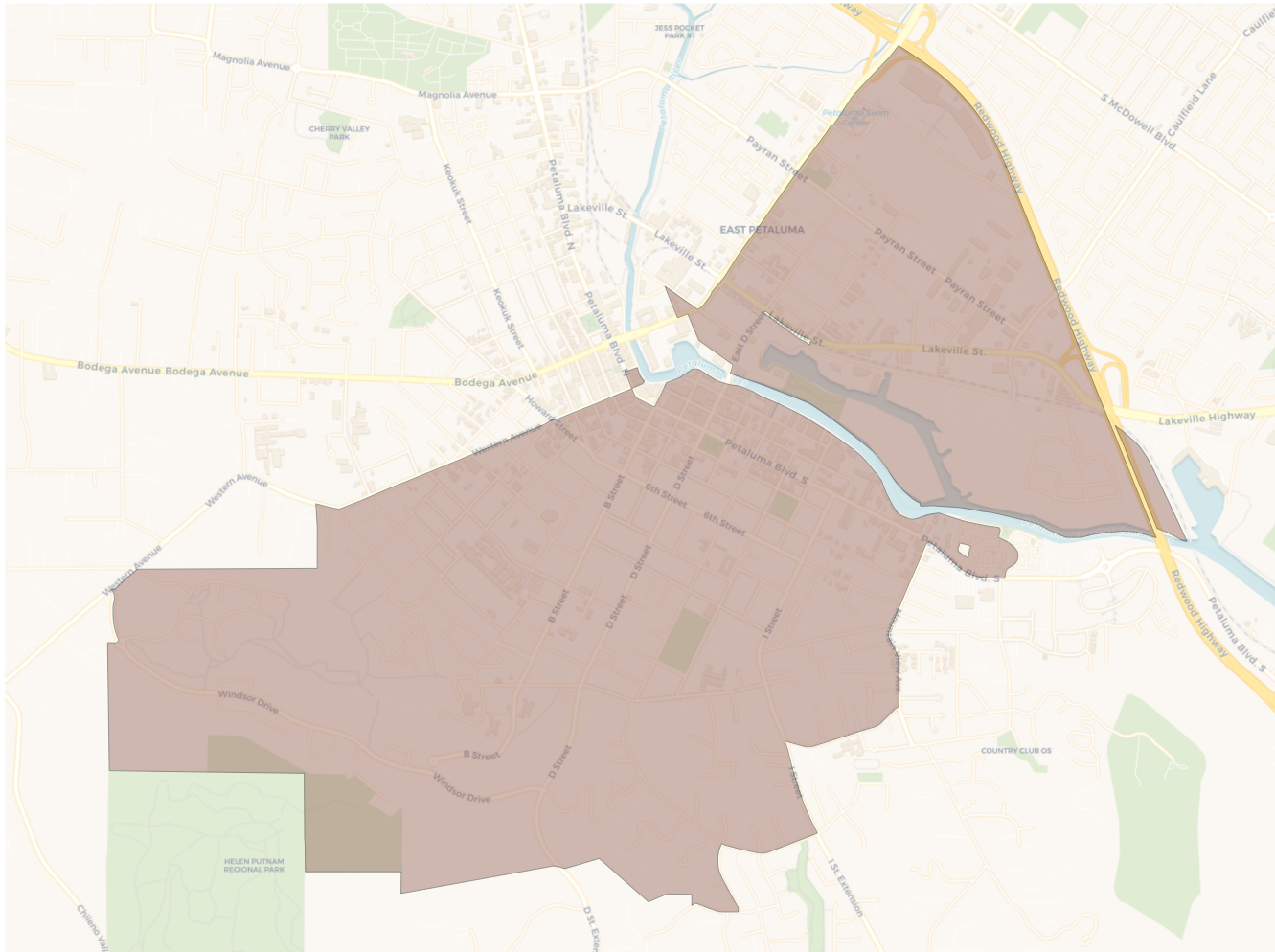


**Citizen Voting Age Population**

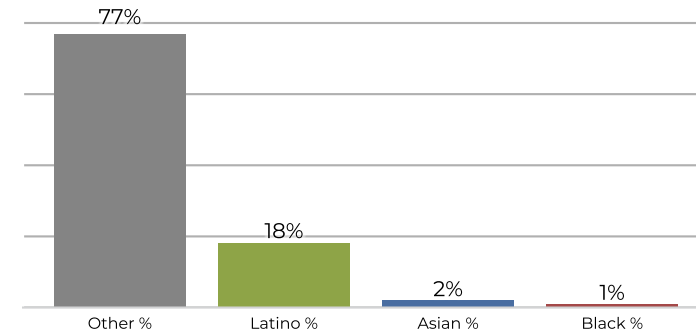


Population	Deviation	Deviation %	Other	Other %	Latino	Latino %	Asian	Asian %	Black	Black %
9,741	-227	-2.3%	6,544	67.2%	2,473	25.4%	528	5.4%	196	2.0%
Total CVAP	Other CVAP	Other CVAP %	Latino CVAP	Latino CVAP %	Asian CVAP	Asian CVAP %	Black CVAP	Black CVAP %		
6,075	4,757	78.3%	853	14.0%	329	5.4%	136	2.2%		

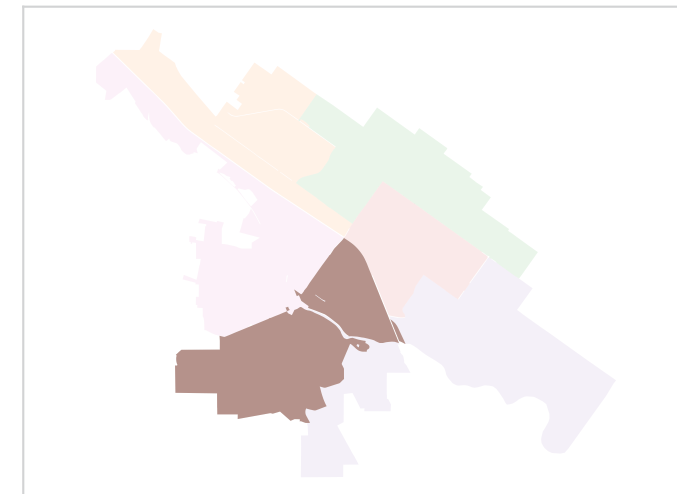
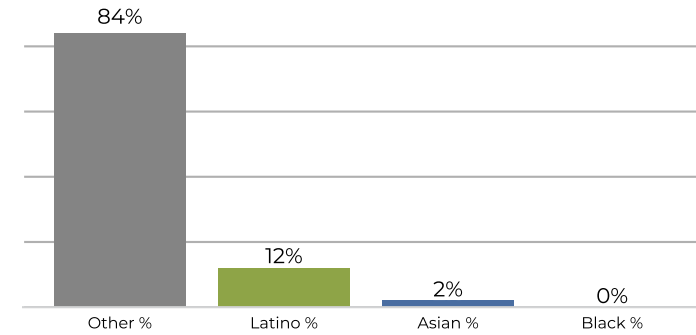
**District 5**



**2020 Census**



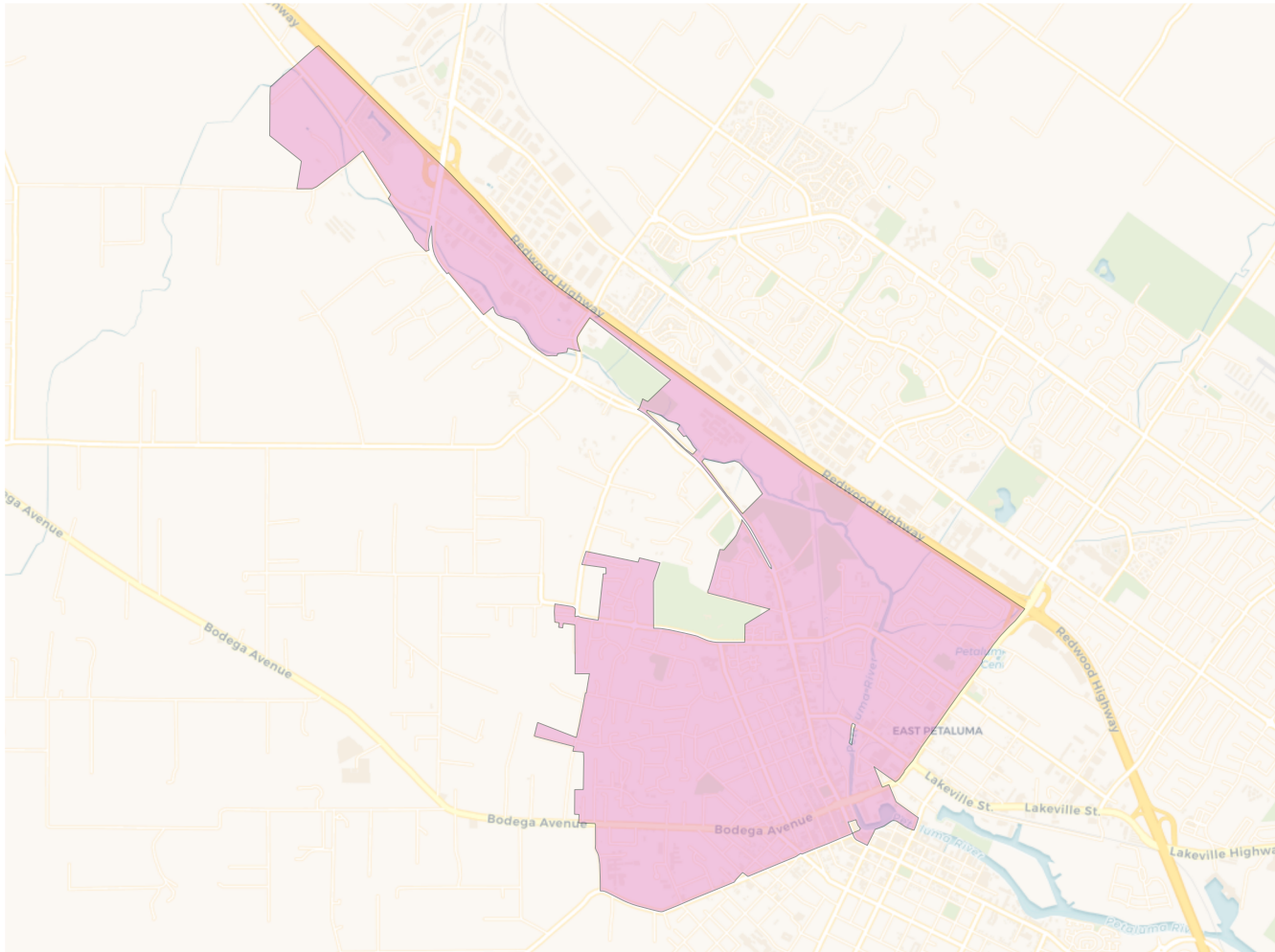
**Citizen Voting Age Population**



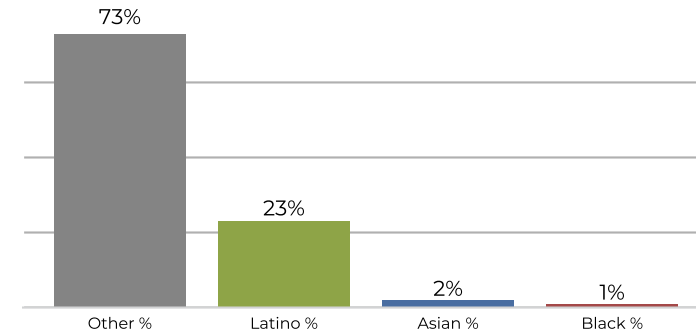
Population	Deviation	Deviation %	Other	Other %	Latino	Latino %	Asian	Asian %	Black	Black %
9,963	-5	-0.1%	7,714	77.4%	1,866	18.7%	281	2.8%	102	1.0%
Total CVAP	Other CVAP	Other CVAP %	Latino CVAP	Latino CVAP %	Asian CVAP	Asian CVAP %	Black CVAP	Black CVAP %		
7,875	6,615	84.0%	989	12.6%	219	2.8%	52	0.7%		



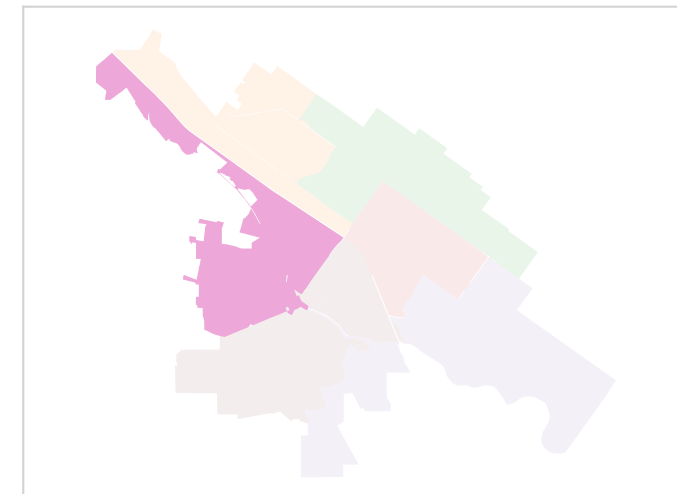
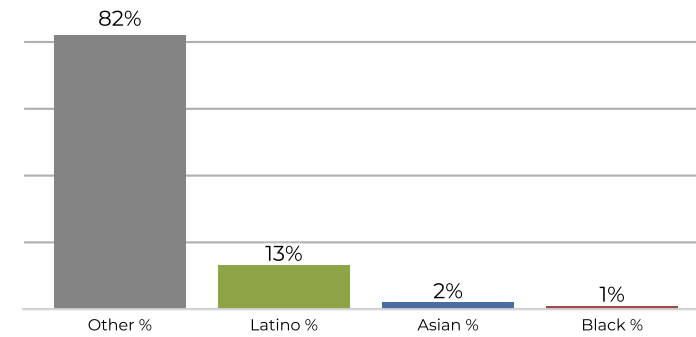
**District 6**



**2020 Census**



**Citizen Voting Age Population**



Population	Deviation	Deviation %	Other	Other %	Latino	Latino %	Asian	Asian %	Black	Black %
9,483	-485	-4.9%	6,937	73.2%	2,205	23.3%	231	2.4%	110	1.2%
Total CVAP	Other CVAP	Other CVAP %	Latino CVAP	Latino CVAP %	Asian CVAP	Asian CVAP %	Black CVAP	Black CVAP %		
6,781	5,587	82.4%	926	13.7%	179	2.6%	89	1.3%		