

HOW TO READ YOUR WATER METER

1: LOCATE YOUR WATER METER

Your meter is usually located in a concrete box labeled “WATER” near the street or sidewalk. Use a tool or screwdriver to lift the lid slowly and gently.

2: READ YOUR WATER METER

All meters will show a reading that tracks the total amount of water used in cubic feet since the meter was installed. One cubic foot of water = 7.48 gallons.

3: MONITOR YOUR WATER USE*

Pick a starting point and record the cubic feet reading and date. We recommend to do a full week. At the end of day seven, write down the cubic feet reading again. Subtract the first reading from the second to find out how much water was used.

**See reverse for the full worksheet of how to calculate gallons used per person per day in your household.*

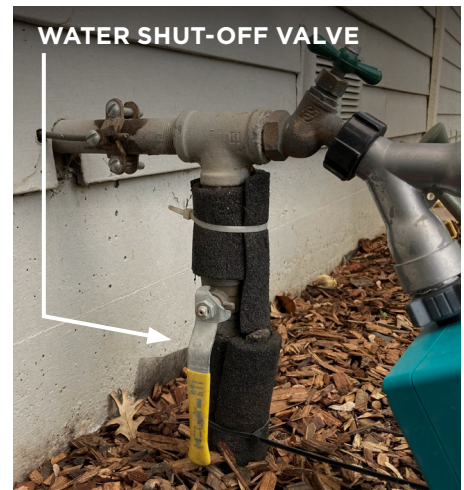
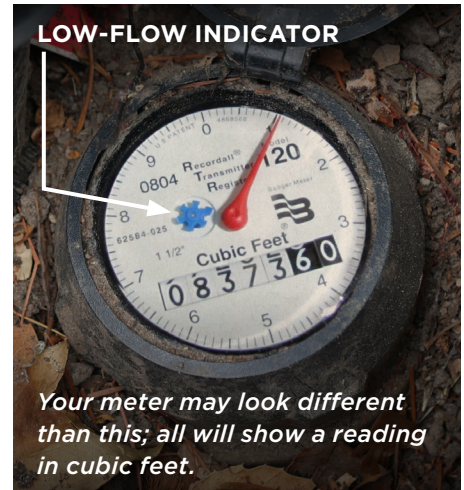
4: CHECK FOR HOUSEHOLD LEAKS

Most meters will have a small star shaped low-flow indicator that spins to reflect the amount of water moving through the meter. When all indoor and outdoor water sources are turned off (washer, faucets, irrigation, etc.), the indicator should not move. If it continues to move, water is flowing somewhere on the property and you may have a leak. To determine if the leak is indoors or outdoors, turn off the water shut-off valve (where the water line enters the home, commonly near the hose bib).

If the indicator continues to move when the water shut-off valve is closed, water is leaking outside the home (most likely the irrigation system or a leak between your home and the meter). If the indicator stops moving when the water shut-off valve is closed, water is leaking in the home (running toilet, leaky pipe, etc.) You will need to contact a plumbing professional for hard to detect leaks and any repair needed.

5: FREE WATER-WISE HOUSECALL PROGRAM

The City of Petaluma offers customers FREE Water-Wise HouseCalls — a personalized program to help you use water more efficiently inside and outside your home. We also offer free DIY Leak Detection Kits. For more information or to schedule your free HouseCall, please call (707) 778-4507 or visit cityofpetaluma.org/consERVE.



CALCULATE YOUR WATER USE

Review the example below then input your own readings to learn the average daily water use per person in your household. We recommend you do a full week (7 days) between readings. Indoor household water needs can typically be met using 25-50 gallons per person per day. During the summer months, water use can increase due to outdoor irrigation.

To use our online water use calculator, visit cityofpetaluma.org/mywateruse or scan this QR code with the camera on your phone.



EXAMPLE

1: METER READING



(Reading 1)



(Reading 2)

Reading #1

Date: 02/01/22

Odometer Reading (cubic feet): 72,670

Reading #2

Date: 02/08/22

Odometer Reading (cubic feet): 72,890

of days between readings: 7

2: WATER USE (CUBIC FEET):

Reading #2: 72,890

Reading #1: - 72,670

= 220 cubic feet used

3: WATER USE (GALLONS):

Cubic feet used: 220

x 7.48 = 1,645.6 gallons used

4: AVERAGE DAILY WATER USE PER PERSON:

Gallons used: 1,645.6

÷ 7 # of days between readings

= 235.1 average daily gallons

÷ 5 # of people in your household

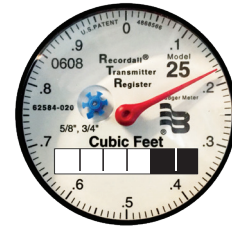
= 47.02 average daily gallons per person

INPUT YOUR READINGS

1: METER READING



(Reading 1)



(Reading 2)

Reading #1

Date: _____

Odometer Reading (cubic feet): _____

Reading #2

Date: _____

Odometer Reading (cubic feet): _____

of days between readings: _____

2: WATER USE (CUBIC FEET):

Reading #2: _____

Reading #1: - _____

= _____ cubic feet used

3: WATER USE (GALLONS):

Cubic feet used: _____

x 7.48 = _____ gallons used

4: AVERAGE DAILY WATER USE PER PERSON:

Gallons used: _____

÷ _____ # of days between readings

= _____ average daily gallons

÷ _____ # of people in your household

= _____ average daily gallons per person

