

ATTACHMENT G

Ground Control Report for City of Petaluma

Towill Job No. 16264-101

Location: Petaluma, California

Prepared by: Towill, Inc.

Prepared for: City of Petaluma, Public Works

Horizontal Datum: NAD83 (CSRC) 2017.5 Epoch

Mid Epoch of Survey: December 5, 2019

Vertical Datum: NAVD 88

Coordinate System: California Coordinate System Zone 2

Linear Unit: US Survey Feet

CONTROL STATIONS

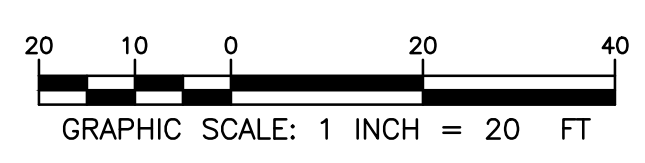
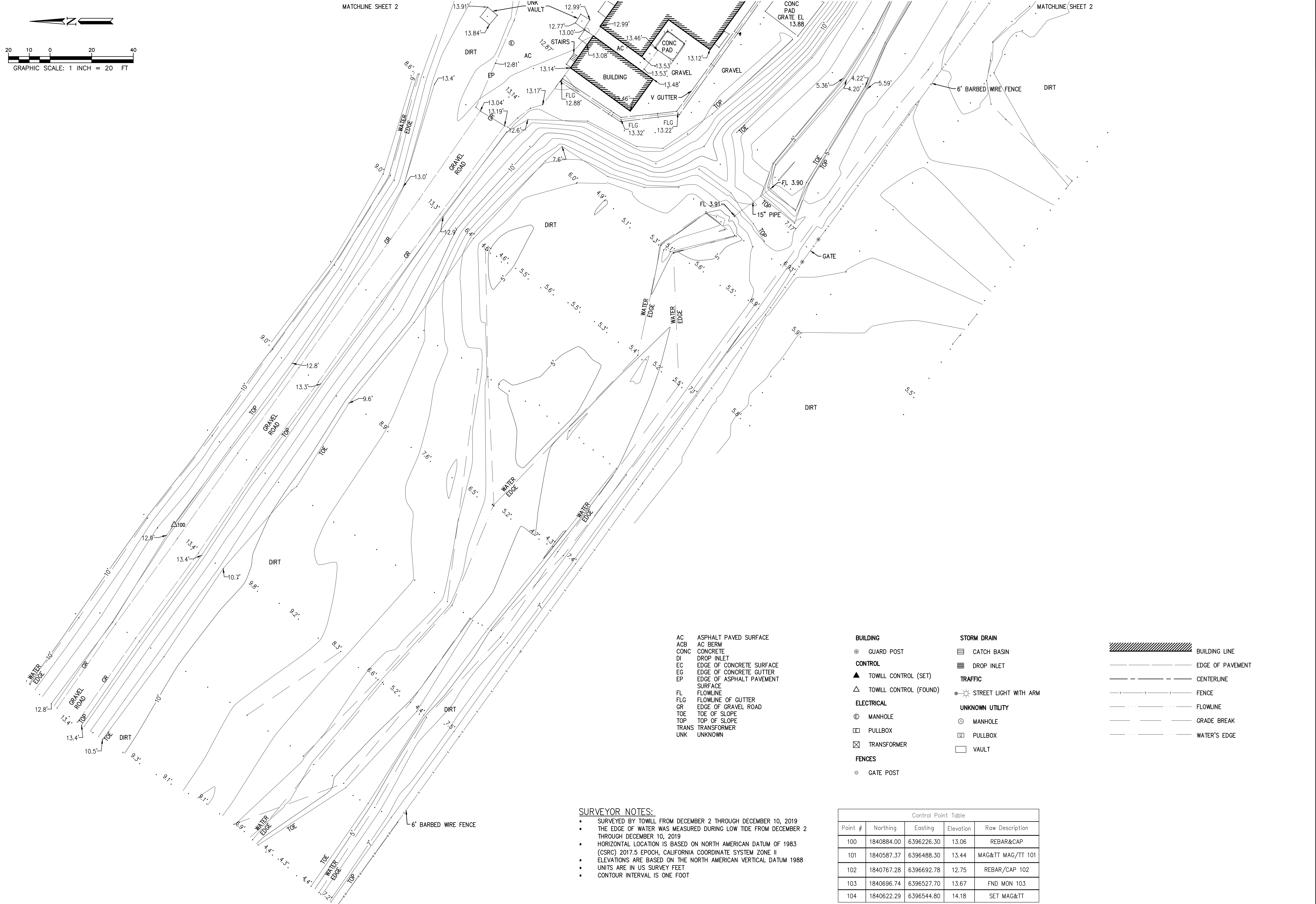
Point ID	Northing	Easting	Elevation		Description
			Monument	Panel	
P198	1857044.18	6387243.15	90.40		DH7231 - PETALUMAIRCN2004 CORS GRP
P199	1858251.81	6417117.20	288.11		SOPAC 2017.5 Epoch
SVIN	1774340.82	6410061.15	16.59		SOPAC 2017.5 Epoch

Items that are **BOLD** were constraining elements in the final adjustment

SET FLIGHT PANELS / CONTROL

Point ID	Northing	Easting	Elevation		Description
			Monument	Panel	
100	1840883.38	6396226.71	13.11		REBAR & CAP STAMPED "TOWILL"
102	1840766.66	6396693.19	12.79		REBAR & CAP STAMPED "TOWILL"
101	1840586.75	6396488.70	13.49		MAG NAIL & WASHER STAMPED "TOWILL"

*GPS DATA PROCESSED WITH ABSOLUTE ANTENNA



MATCHLINE SHEET 2

MATCHLINE SHEET 2

- AC ASPHALT PAVED SURFACE
- ACB AC BERM
- CONC CONCRETE
- DI DROP INLET
- EC EDGE OF CONCRETE SURFACE
- EG EDGE OF CONCRETE GUTTER
- EP EDGE OF ASPHALT PAVEMENT SURFACE
- FL FLOWLINE
- FLG FLOWLINE OF GUTTER
- GR EDGE OF GRAVEL ROAD
- TOE TOE OF SLOPE
- TOP TOP OF SLOPE
- TRANS TRANSFORMER
- UNK UNKNOWN

- BUILDING**
- ⊙ GUARD POST
- CONTROL**
- ▲ TOWILL CONTROL (SET)
- △ TOWILL CONTROL (FOUND)
- ELECTRICAL**
- ⊙ MANHOLE
- ⊠ PULLBOX
- ⊠ TRANSFORMER
- FENCES**
- ⊙ GATE POST

- STORM DRAIN**
- ≡ CATCH BASIN
- ≡ DROP INLET
- TRAFFIC**
- ⊙ STREET LIGHT WITH ARM
- UNKNOWN UTILITY**
- ⊙ MANHOLE
- ⊠ PULLBOX
- VAULT

- ▨ BUILDING LINE
- EDGE OF PAVEMENT
- - - CENTERLINE
- x - x - FENCE
- - - FLOWLINE
- - - GRADE BREAK
- - - WATER'S EDGE

SURVEYOR NOTES:

- SURVEYED BY TOWILL FROM DECEMBER 2 THROUGH DECEMBER 10, 2019
- THE EDGE OF WATER WAS MEASURED DURING LOW TIDE FROM DECEMBER 2 THROUGH DECEMBER 10, 2019
- HORIZONTAL LOCATION IS BASED ON NORTH AMERICAN DATUM OF 1983 (CSRS) 2017.5 EPOCH, CALIFORNIA COORDINATE SYSTEM ZONE II
- ELEVATIONS ARE BASED ON THE NORTH AMERICAN VERTICAL DATUM 1988
- UNITS ARE IN US SURVEY FEET
- CONTOUR INTERVAL IS ONE FOOT

Control Point Table				
Point #	Northing	Easting	Elevation	Raw Description
100	1840884.00	6396226.30	13.06	REBAR&CAP
101	1840587.37	6396488.30	13.44	MAG&TT MAG/TT 101
102	1840767.28	6396692.78	12.75	REBAR/CAP 102
103	1840696.74	6396527.70	13.67	FND MON 103
104	1840622.29	6396544.80	14.18	SET MAG&TT

TOWILL | Surveying, Mapping and GIS Services
 2300 Clayton Road, Suite 1200
 Concord, CA 94520-2176
 (925) 682-6976 - www.towill.com

TOPOGRAPHIC SURVEY OF
PETALUMA OUTFALL

PREPARED FOR:
 THE CITY OF
PETALUMA

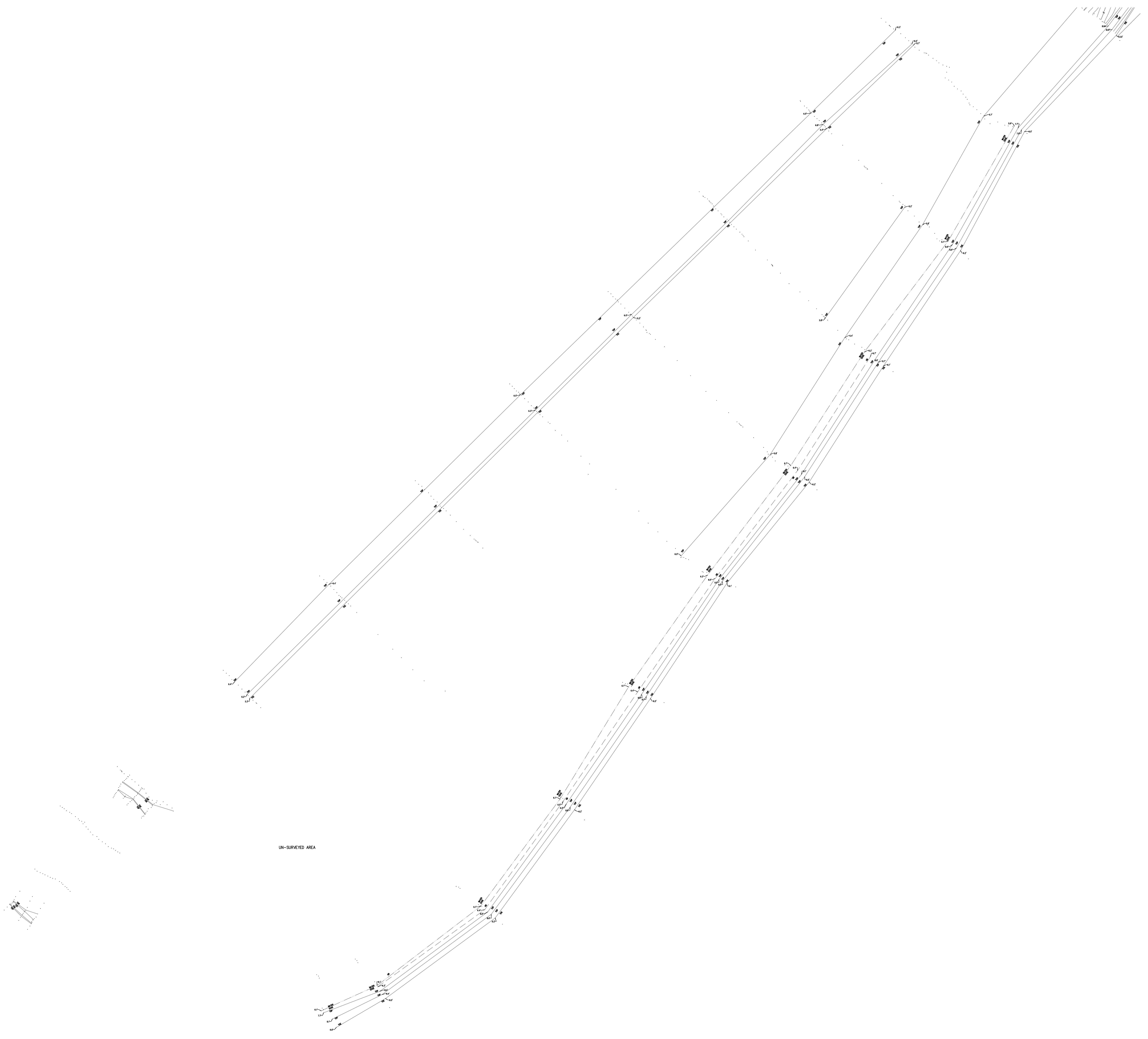
SCALE	DATE	BY	DATE
1" = 20'	DEC 2019		
	SURVEYED	FAB	
	DATE	N/A	
	CALCULATED	MU	
	DRAWN	MU	
	CHECKED	DLO	

REVISIONS	DATE	BY	DESCRIPTION

ISSUE DATE	JOB NUMBER
01/30/2020	16264-101

SHEET 1
 OF 2

C:\COMDRA\16264-City of Petaluma\101- Outfall Topo\Office\CAD\Topo\16264-101-City of Petaluma - Outfall Topographics.dwg, Jan 31, 2020 - 11:55am



UN-SURVEYED AREA