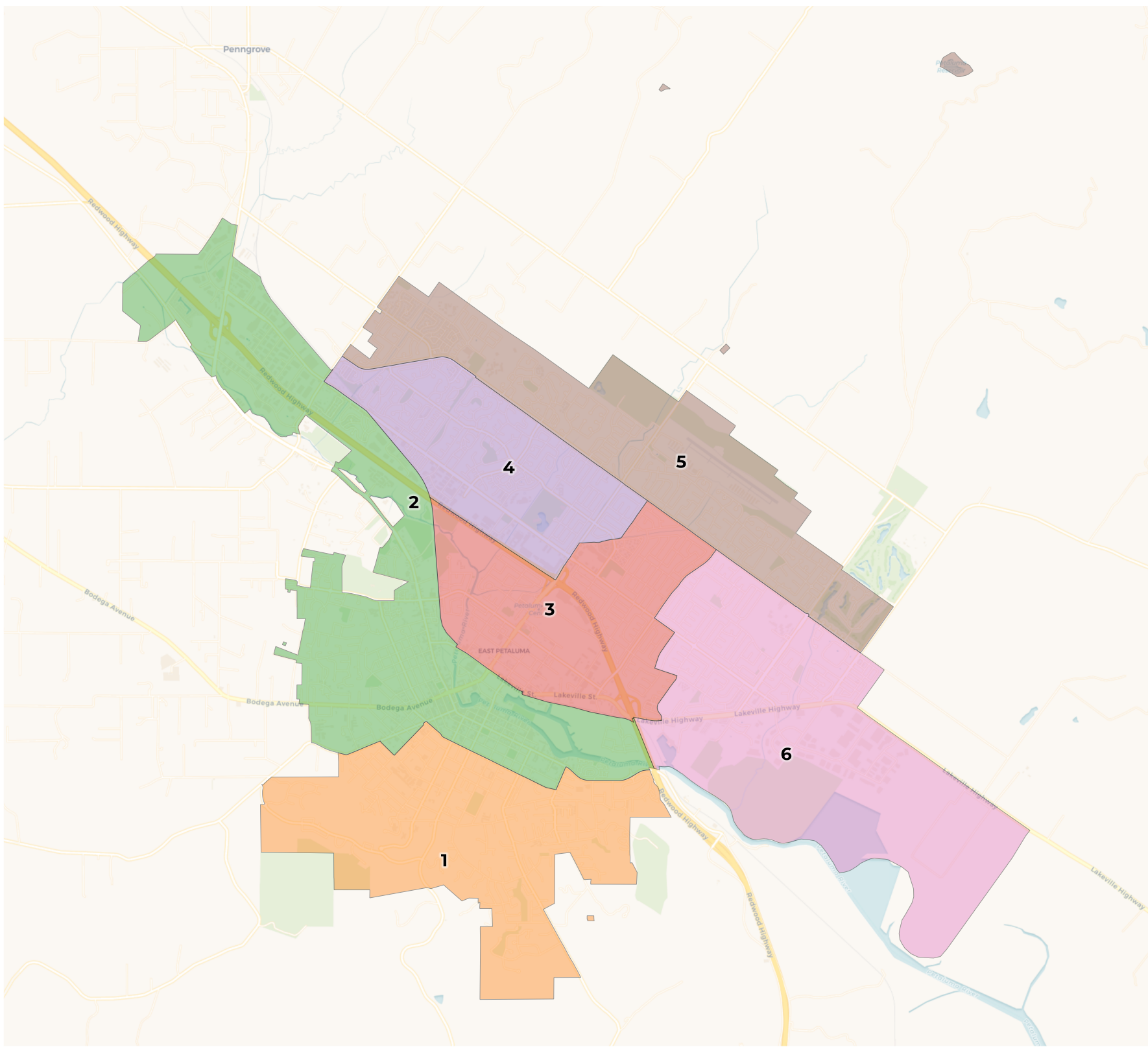


**REDISTRICTING  
PARTNERS**

**City of Petaluma  
Combo 3**

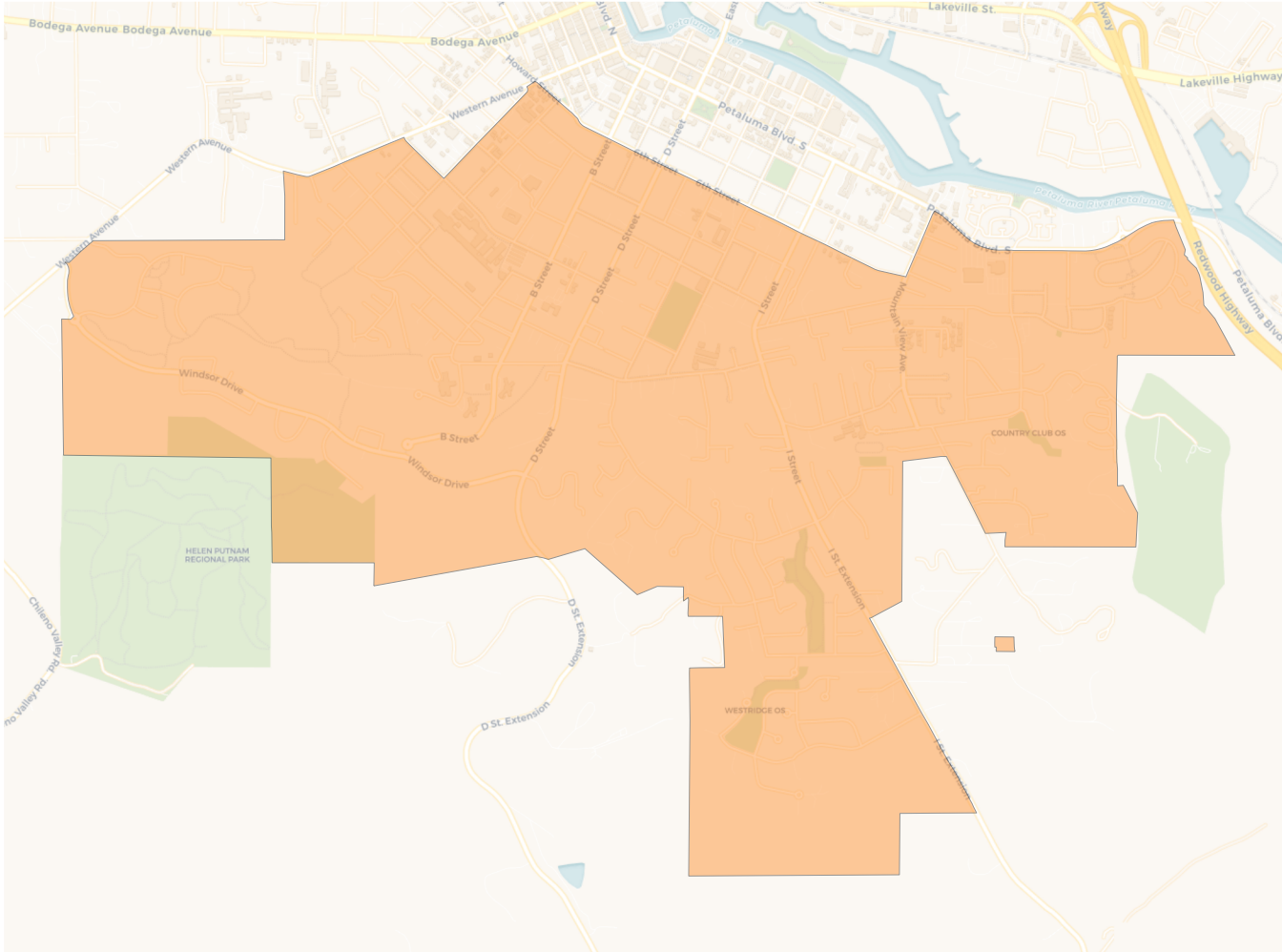
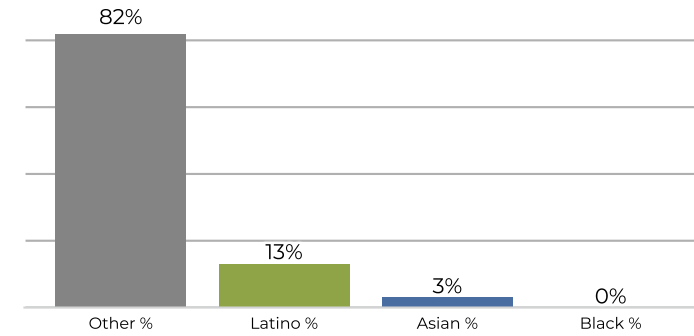
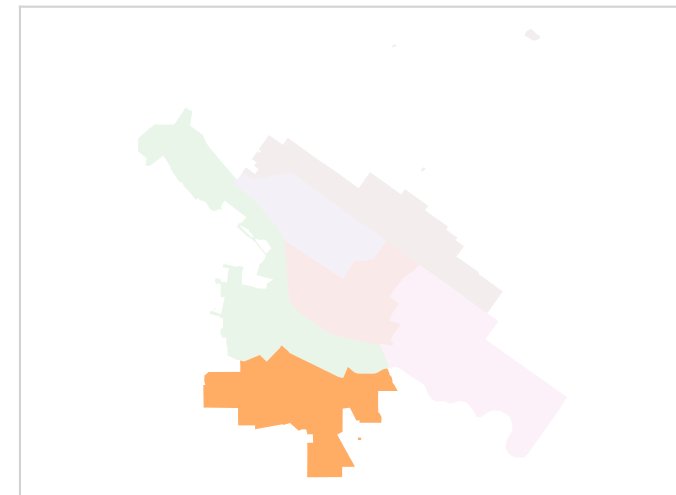
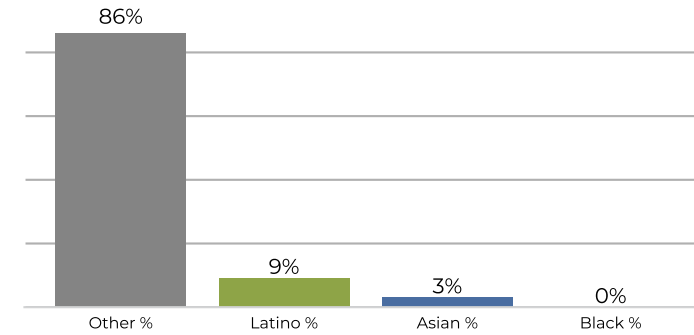


**2020 Census**

	1	2	3	4	5	6
Population	9,750	9,719	10,014	10,184	10,229	9,950
Deviation	-224	-255	40	210	255	-24
Deviation %	-2.2%	-2.6%	0.4%	2.1%	2.6%	-0.2%
Other	8,036	7,533	6,238	6,995	7,618	6,194
Other %	82.4%	77.5%	62.3%	68.7%	74.5%	62.3%
Latino	1,332	1,793	3,224	2,532	1,743	3,010
Latino %	13.7%	18.4%	32.2%	24.9%	17.0%	30.3%
Asian	306	269	394	550	765	528
Asian %	3.1%	2.8%	3.9%	5.4%	7.5%	5.3%
Black	76	124	158	107	103	218
Black %	0.8%	1.3%	1.6%	1.1%	1.0%	2.2%

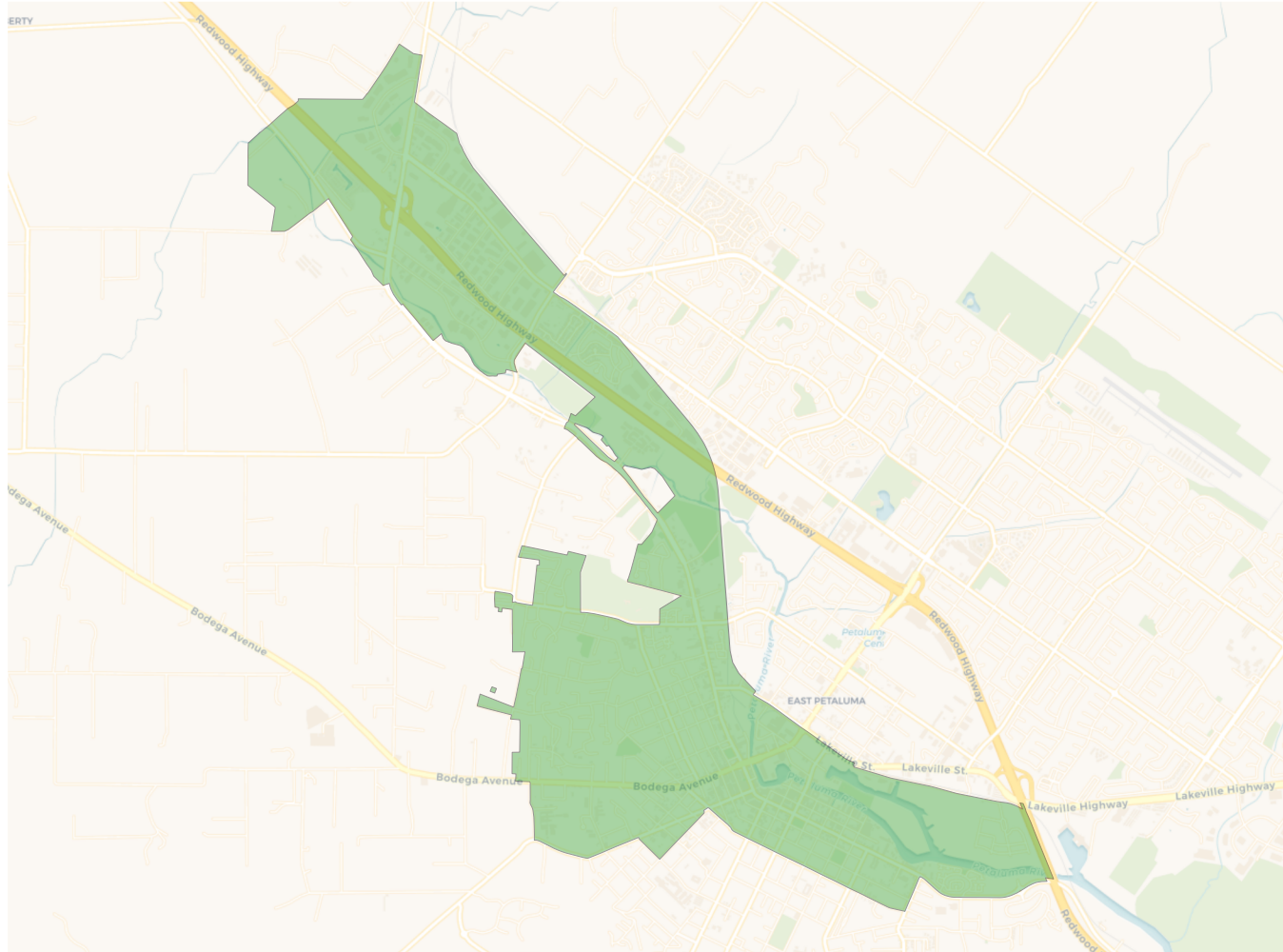
**Citizen Voting Age Population (CVAP)**

	1	2	3	4	5	6
Total CVAP	7,618	7,130	7,101	6,891	7,923	6,659
Other CVAP	6,603	5,961	5,448	5,626	6,508	5,136
Other CVAP %	86.7%	83.6%	76.7%	81.6%	82.1%	77.1%
Latino CVAP	692	876	1,355	867	936	1,104
Latino CVAP %	9.1%	12.3%	19.1%	12.6%	11.8%	16.6%
Asian CVAP	263	154	245	283	382	337
Asian CVAP %	3.5%	2.2%	3.5%	4.1%	4.8%	5.1%
Black CVAP	60	139	53	115	97	82
Black CVAP %	0.8%	1.9%	0.7%	1.7%	1.2%	1.2%

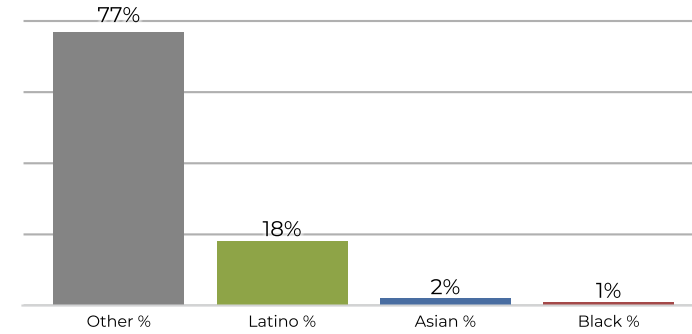
**District 1**

**2020 Census**

**Citizen Voting Age Population**


Population	Deviation	Deviation %	Other	Other %	Latino	Latino %	Asian	Asian %	Black	Black %
9,750	-224	-2.2%	8,036	82.4%	1,332	13.7%	306	3.1%	76	0.8%
Total CVAP	Other CVAP	Other CVAP %	Latino CVAP	Latino CVAP %	Asian CVAP	Asian CVAP %	Black CVAP	Black CVAP %		
7,618	6,603	86.7%	692	9.1%	263	3.5%	60	0.8%		

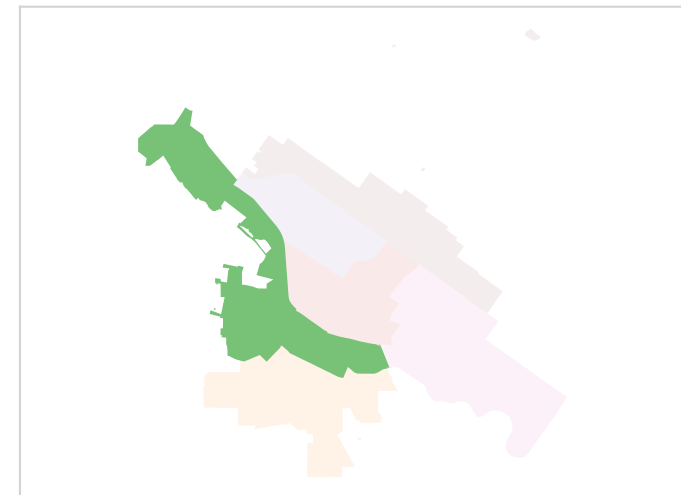
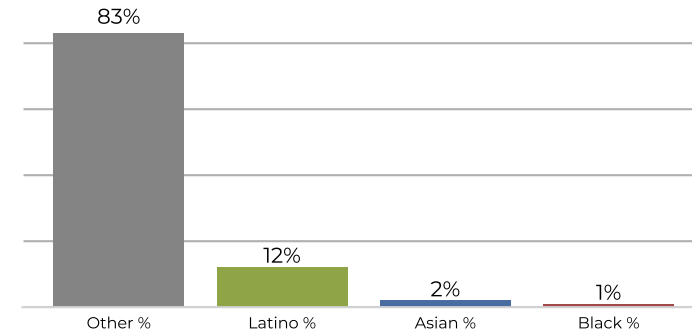
**District 2**



**2020 Census**

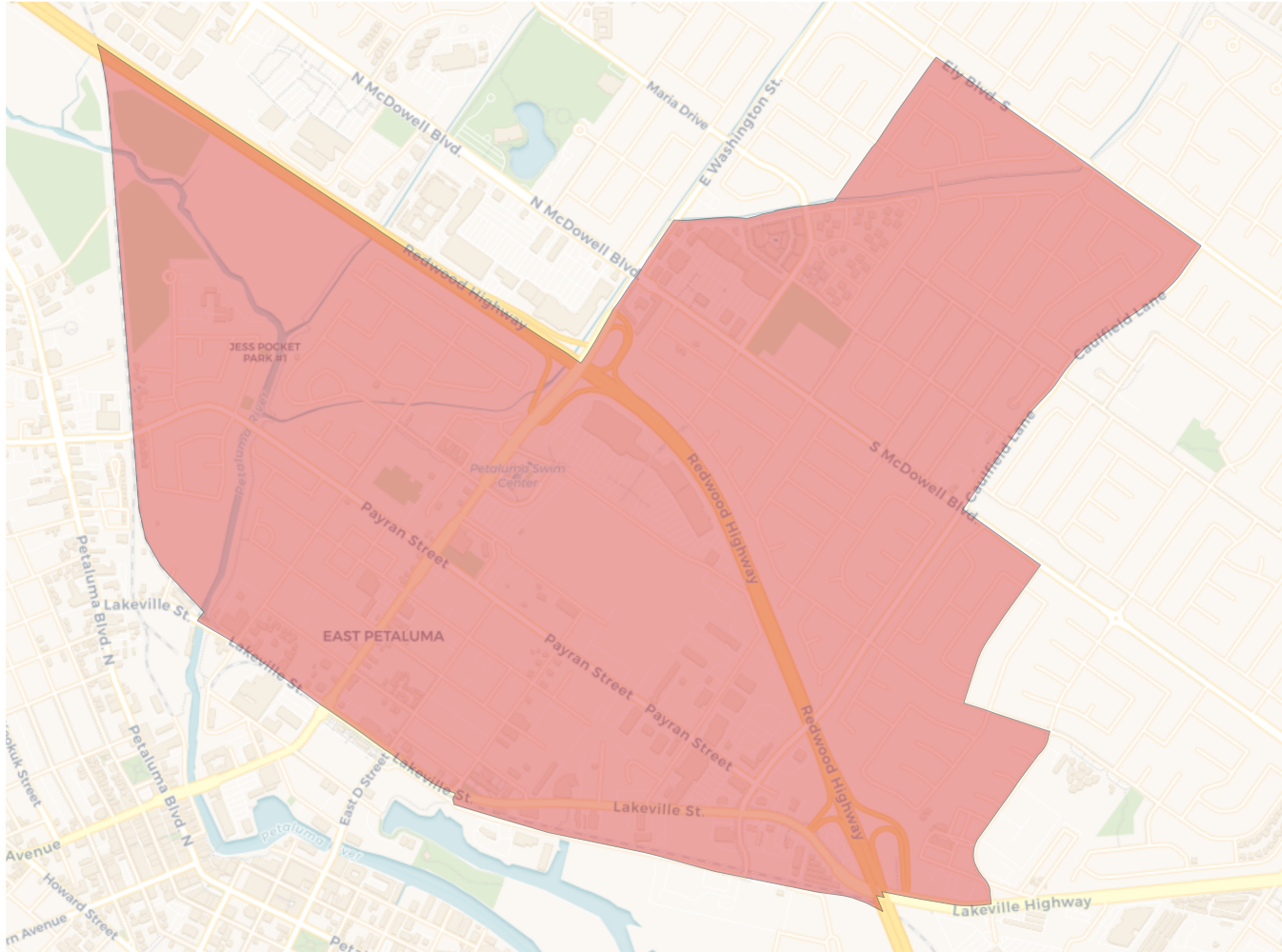


**Citizen Voting Age Population**

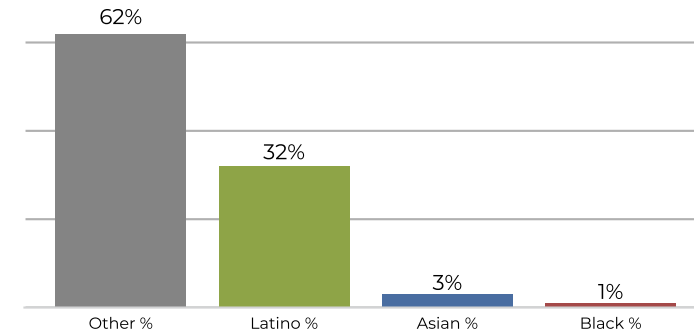


Population	Deviation	Deviation %	Other	Other %	Latino	Latino %	Asian	Asian %	Black	Black %
9,719	-255	-2.6%	7,533	77.5%	1,793	18.4%	269	2.8%	124	1.3%
Total CVAP	Other CVAP	Other CVAP %	Latino CVAP	Latino CVAP %	Asian CVAP	Asian CVAP %	Black CVAP	Black CVAP %		
7,130	5,961	83.6%	876	12.3%	154	2.2%	139	1.9%		

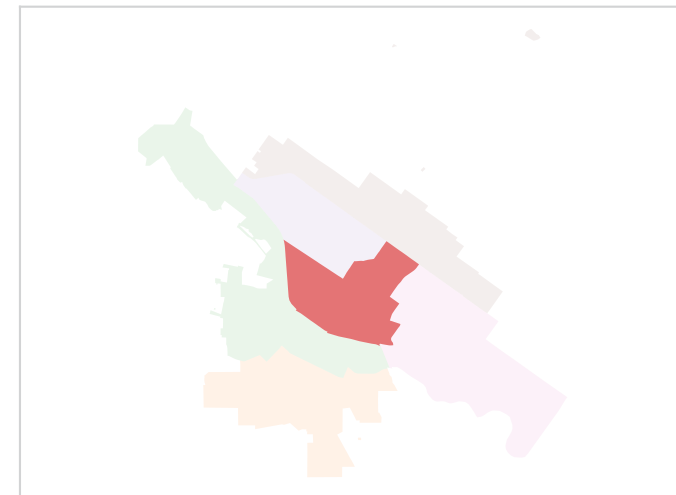
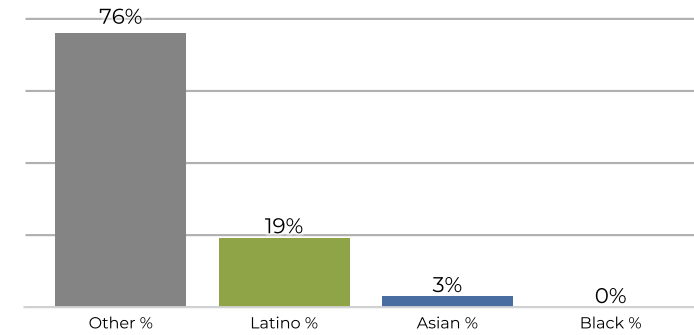
**District 3**



**2020 Census**

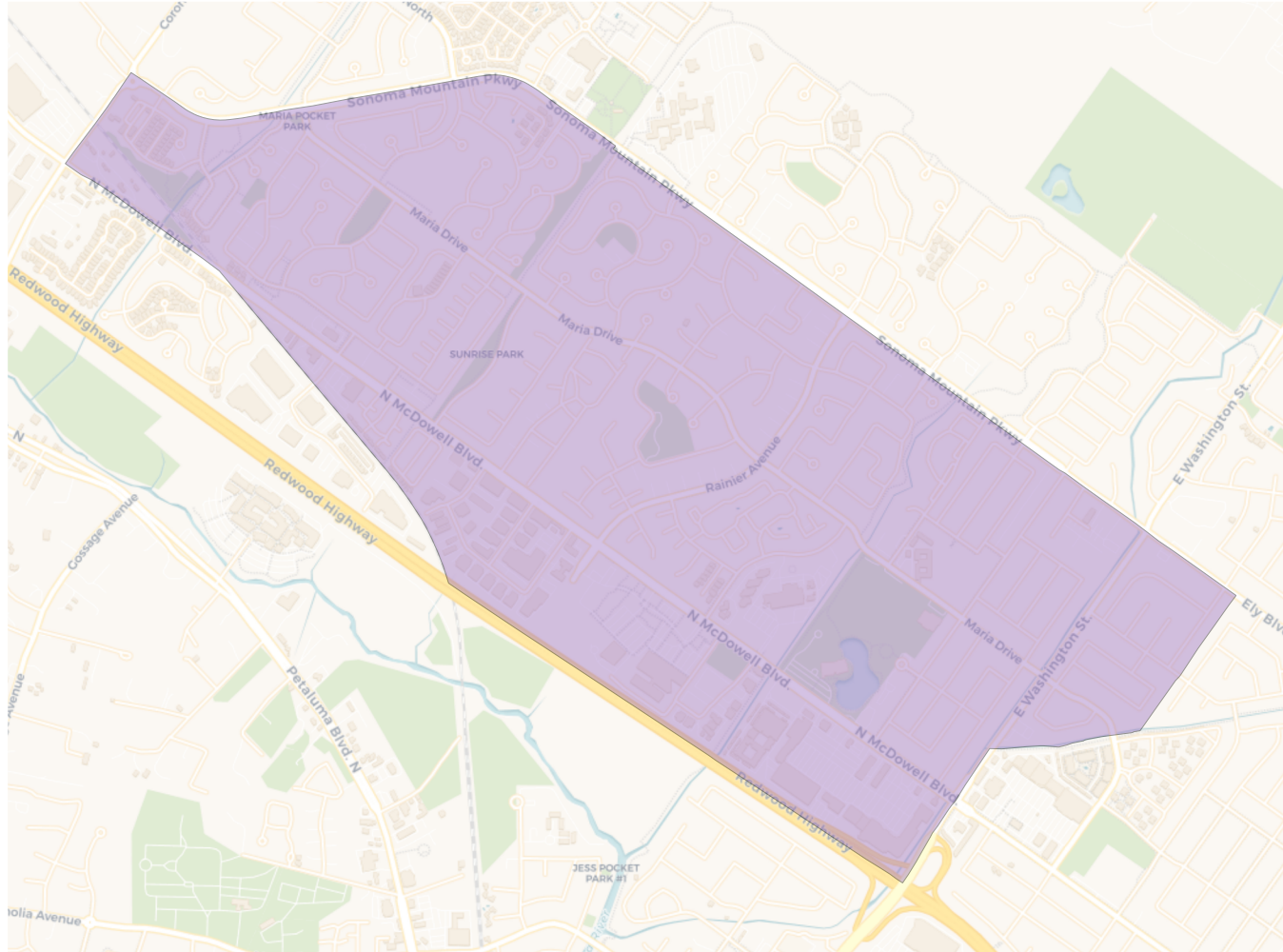


**Citizen Voting Age Population**

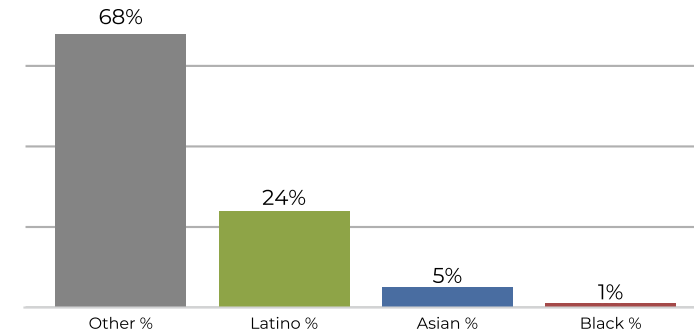


Population	Deviation	Deviation %	Other	Other %	Latino	Latino %	Asian	Asian %	Black	Black %
10,014	40	0.4%	6,238	62.3%	3,224	32.2%	394	3.9%	158	1.6%
Total CVAP	Other CVAP	Other CVAP %	Latino CVAP	Latino CVAP %	Asian CVAP	Asian CVAP %	Black CVAP	Black CVAP %		
7,101	5,448	76.7%	1,355	19.1%	245	3.5%	53	0.7%		

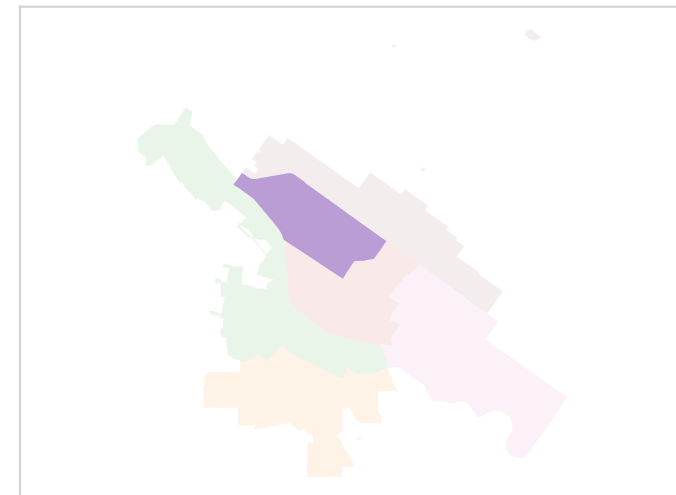
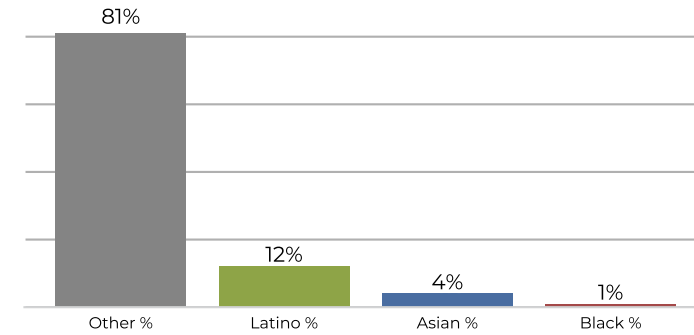
**District 4**



**2020 Census**

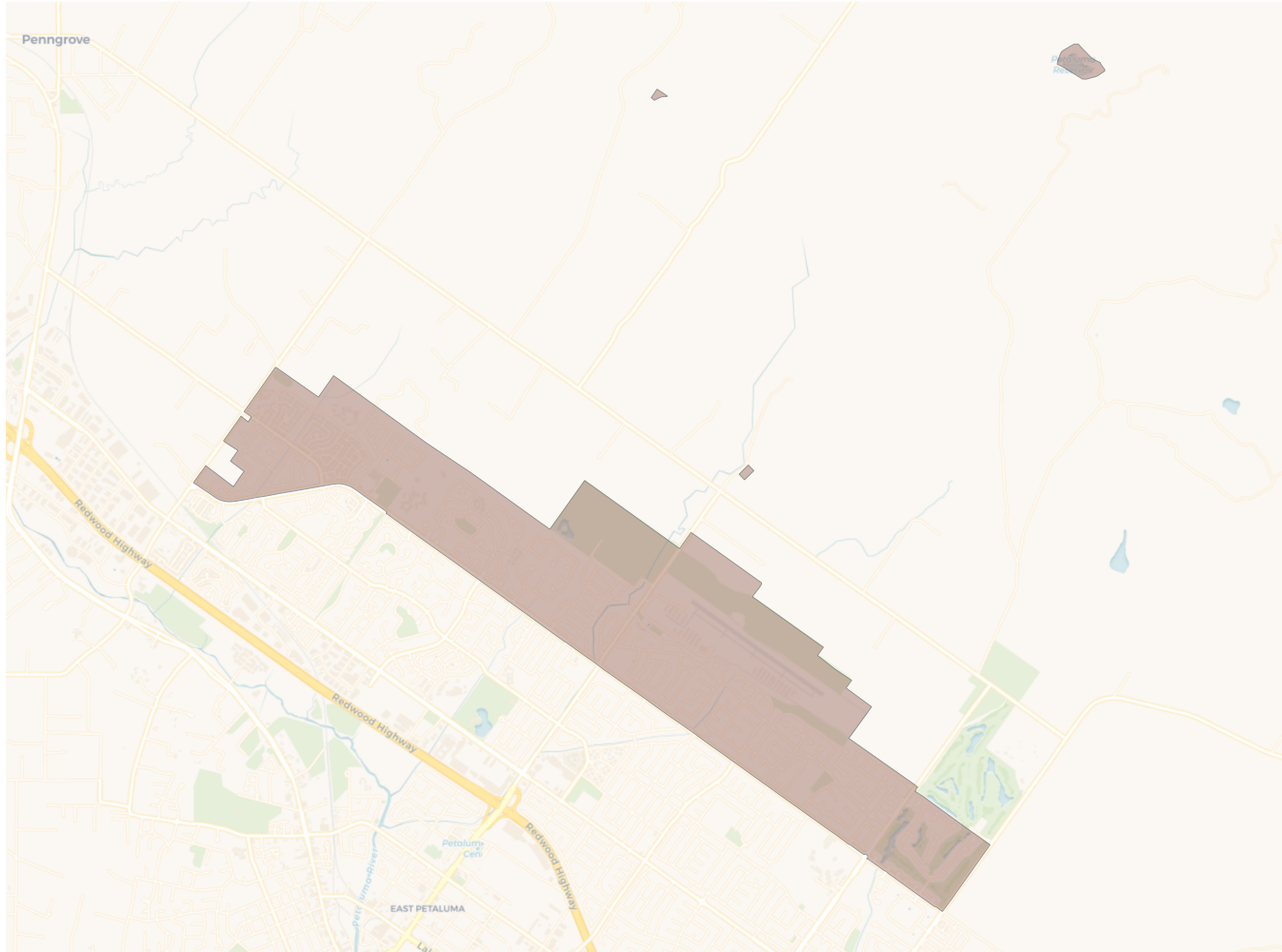


**Citizen Voting Age Population**

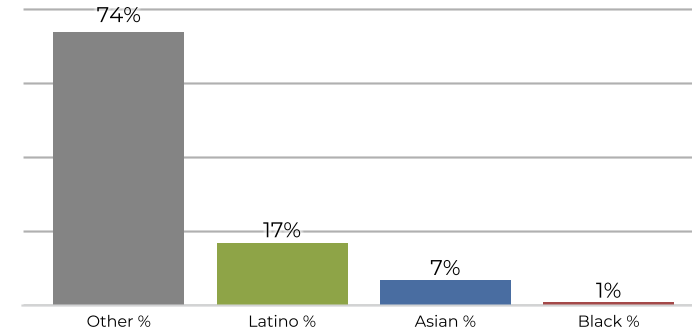


Population	Deviation	Deviation %	Other	Other %	Latino	Latino %	Asian	Asian %	Black	Black %
10,184	210	2.1%	6,995	68.7%	2,532	24.9%	550	5.4%	107	1.1%
Total CVAP	Other CVAP	Other CVAP %	Latino CVAP	Latino CVAP %	Asian CVAP	Asian CVAP %	Black CVAP	Black CVAP %		
6,891	5,626	81.6%	867	12.6%	283	4.1%	115	1.7%		

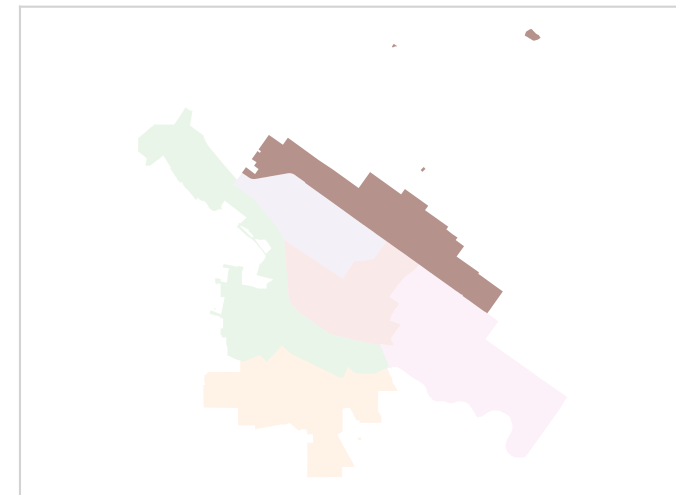
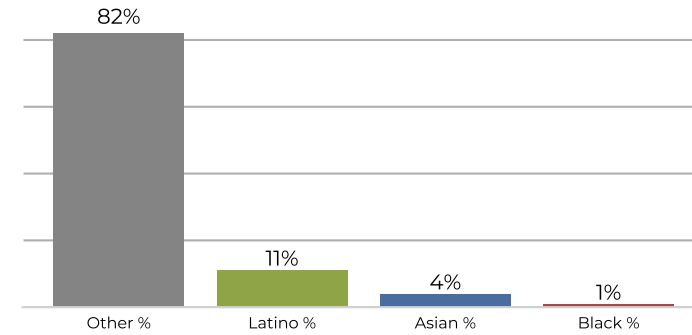
**District 5**



**2020 Census**

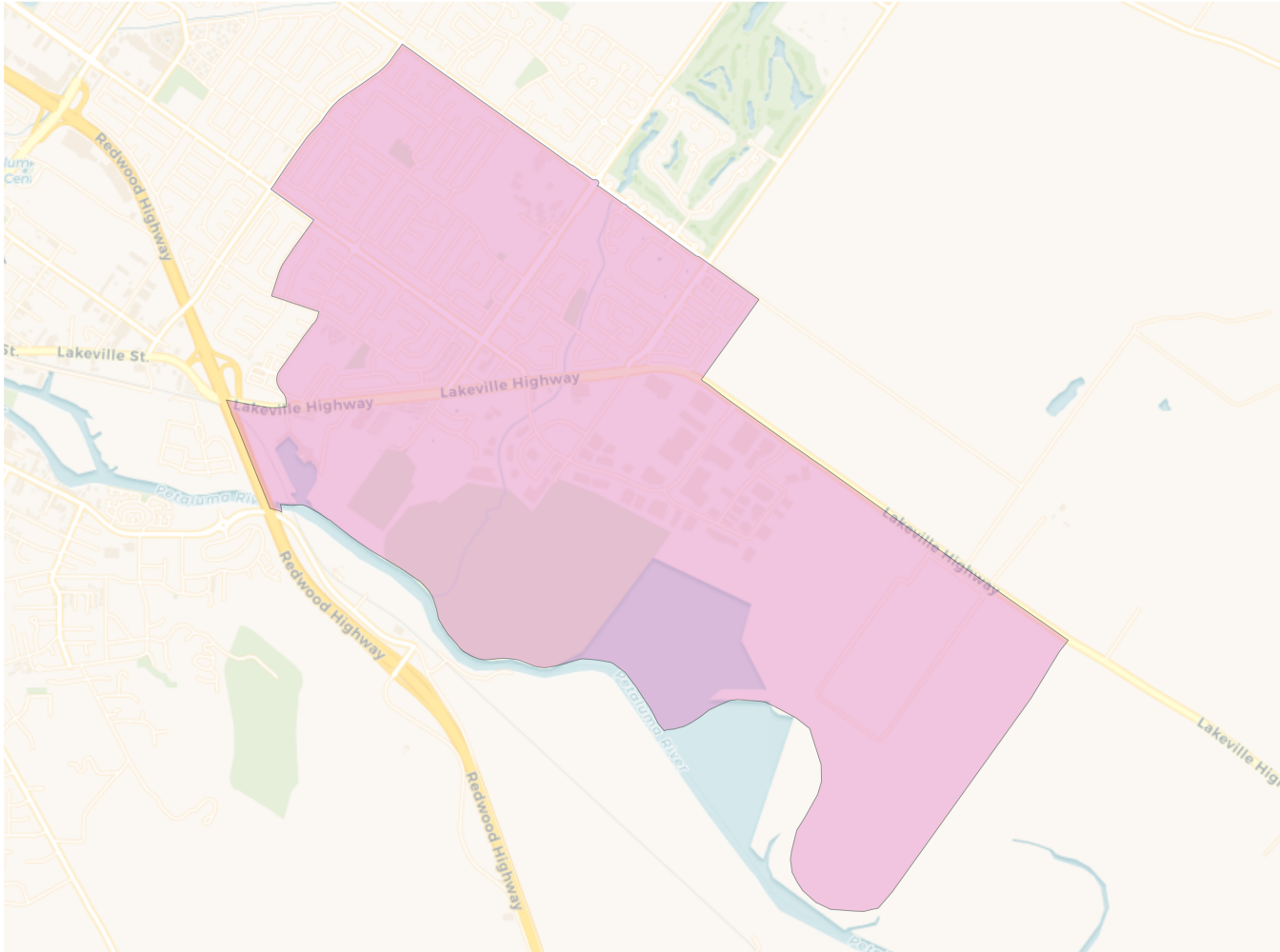


**Citizen Voting Age Population**

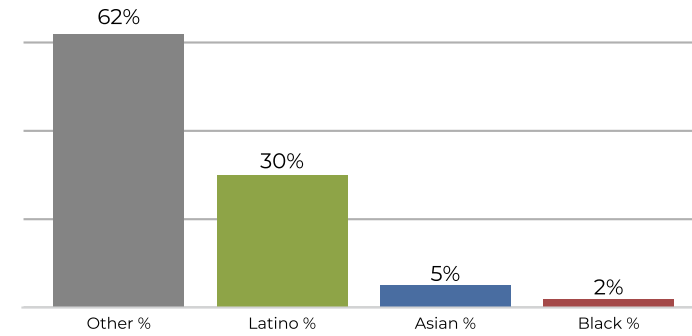


Population	Deviation	Deviation %	Other	Other %	Latino	Latino %	Asian	Asian %	Black	Black %
10,229	255	2.6%	7,618	74.5%	1,743	17.0%	765	7.5%	103	1.0%
Total CVAP	Other CVAP	Other CVAP %	Latino CVAP	Latino CVAP %	Asian CVAP	Asian CVAP %	Black CVAP	Black CVAP %		
7,923	6,508	82.1%	936	11.8%	382	4.8%	97	1.2%		

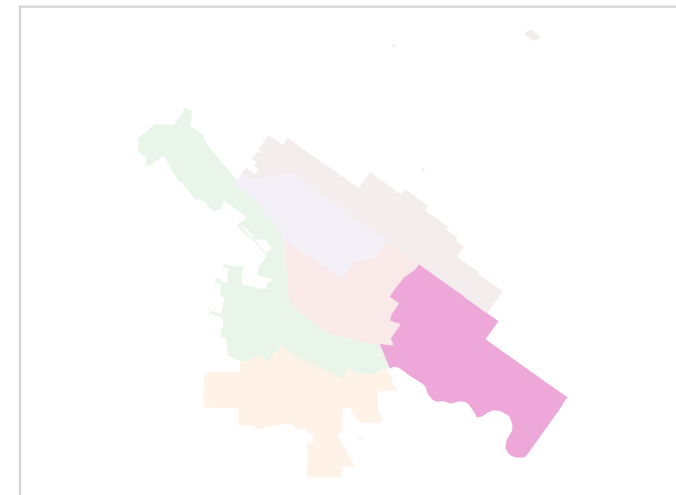
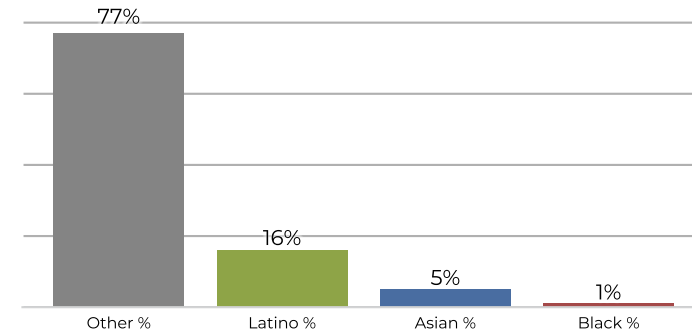
**District 6**



**2020 Census**



**Citizen Voting Age Population**



Population	Deviation	Deviation %	Other	Other %	Latino	Latino %	Asian	Asian %	Black	Black %
9,950	-24	-0.2%	6,194	62.3%	3,010	30.3%	528	5.3%	218	2.2%
Total CVAP	Other CVAP	Other CVAP %	Latino CVAP	Latino CVAP %	Asian CVAP	Asian CVAP %	Black CVAP	Black CVAP %		
6,659	5,136	77.1%	1,104	16.6%	337	5.1%	82	1.2%		