

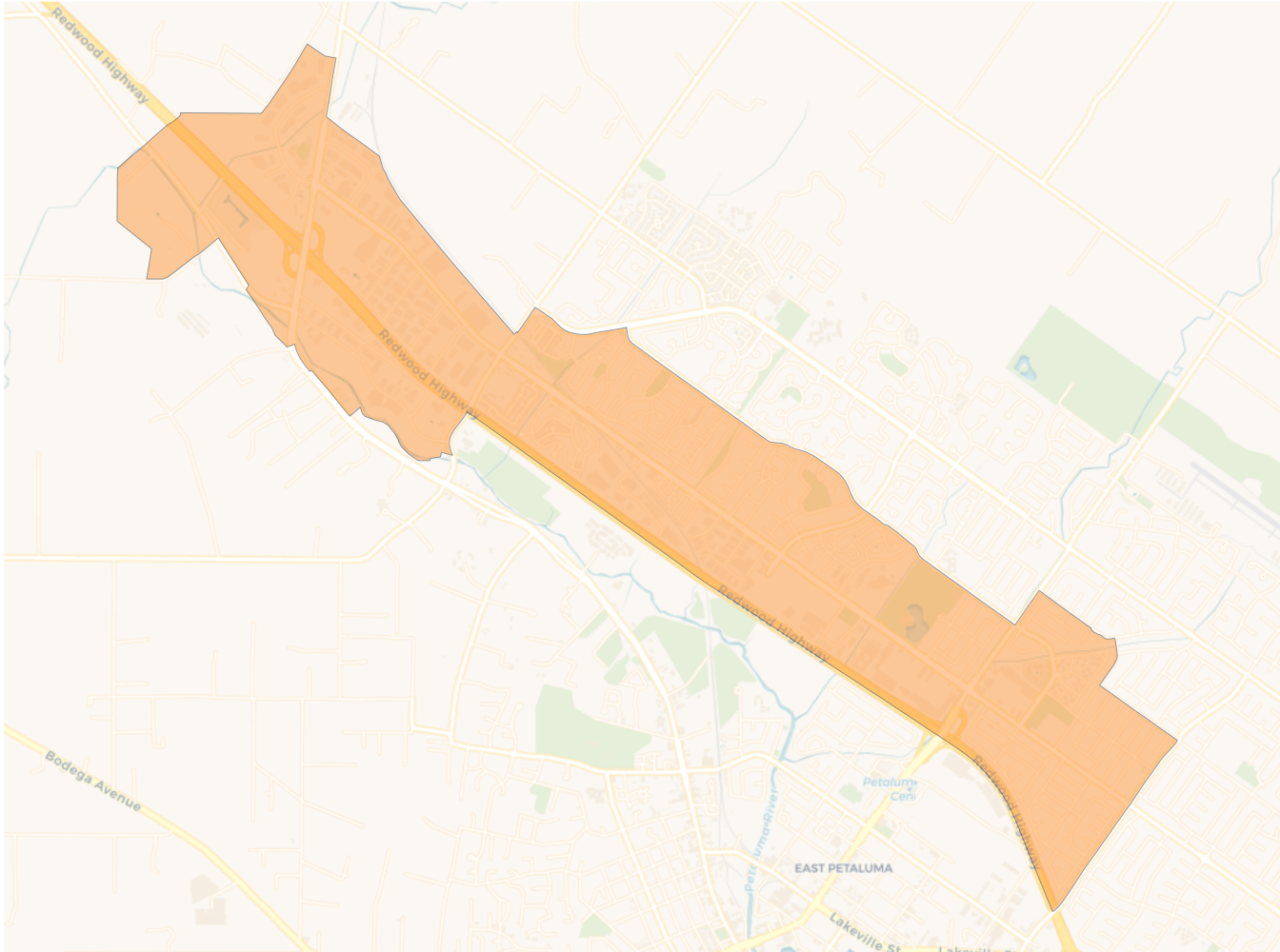
2020 Census

	A	B	C	D	E	F
Population	9,943	9,934	9,935	10,187	9,789	10,058
Deviation	-31	-40	-39	213	-185	84
Deviation %	-0.3%	-0.4%	-0.4%	2.1%	-1.9%	0.8%
Other	6,313	7,305	6,964	6,904	8,051	7,077
Other %	63.5%	73.5%	70.1%	67.8%	82.2%	70.4%
Latino	3,013	1,789	2,262	2,574	1,410	2,586
Latino %	30.3%	18.0%	22.8%	25.3%	14.4%	25.7%
Asian	498	717	576	495	253	273
Asian %	5.0%	7.2%	5.8%	4.9%	2.6%	2.7%
Black	119	123	133	214	75	122
Black %	1.2%	1.2%	1.3%	2.1%	0.8%	1.2%

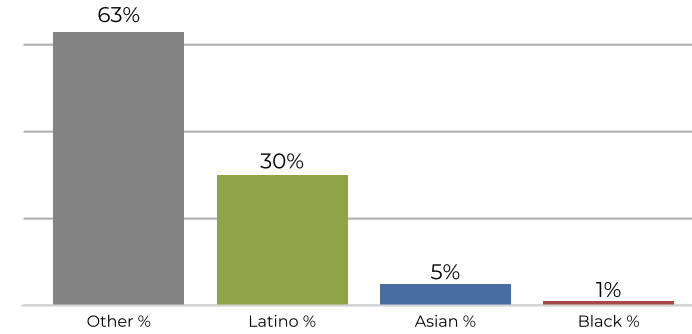
Citizen Voting Age Population (CVAP)

	A	B	C	D	E	F
Total CVAP	7,239	6,961	7,374	6,899	7,571	7,278
Other CVAP	5,661	5,721	5,970	5,617	6,599	5,714
Other CVAP %	78.2%	82.2%	81.0%	81.4%	87.2%	78.5%
Latino CVAP	1,268	764	942	858	721	1,277
Latino CVAP %	17.5%	11.0%	12.8%	12.4%	9.5%	17.5%
Asian CVAP	193	403	381	263	239	185
Asian CVAP %	2.7%	5.8%	5.2%	3.8%	3.2%	2.5%
Black CVAP	117	73	81	161	12	102
Black CVAP %	1.6%	1.0%	1.1%	2.3%	0.2%	1.4%

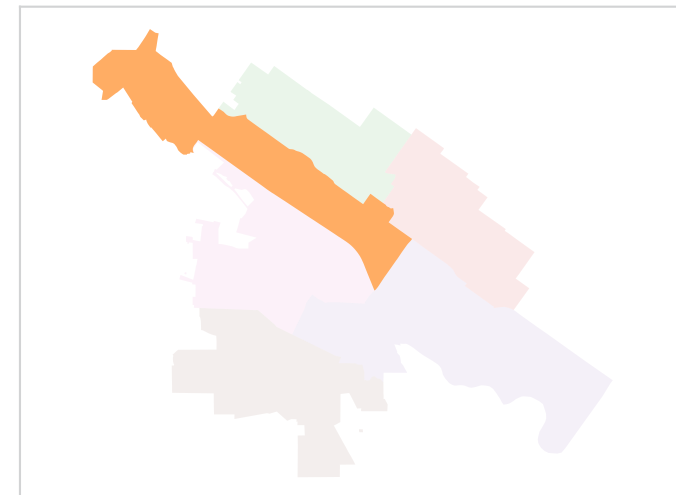
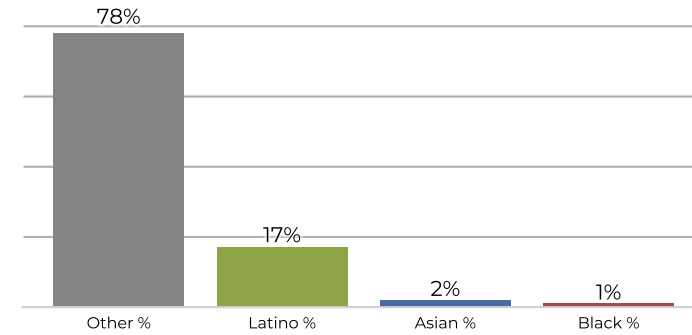
District A



2020 Census

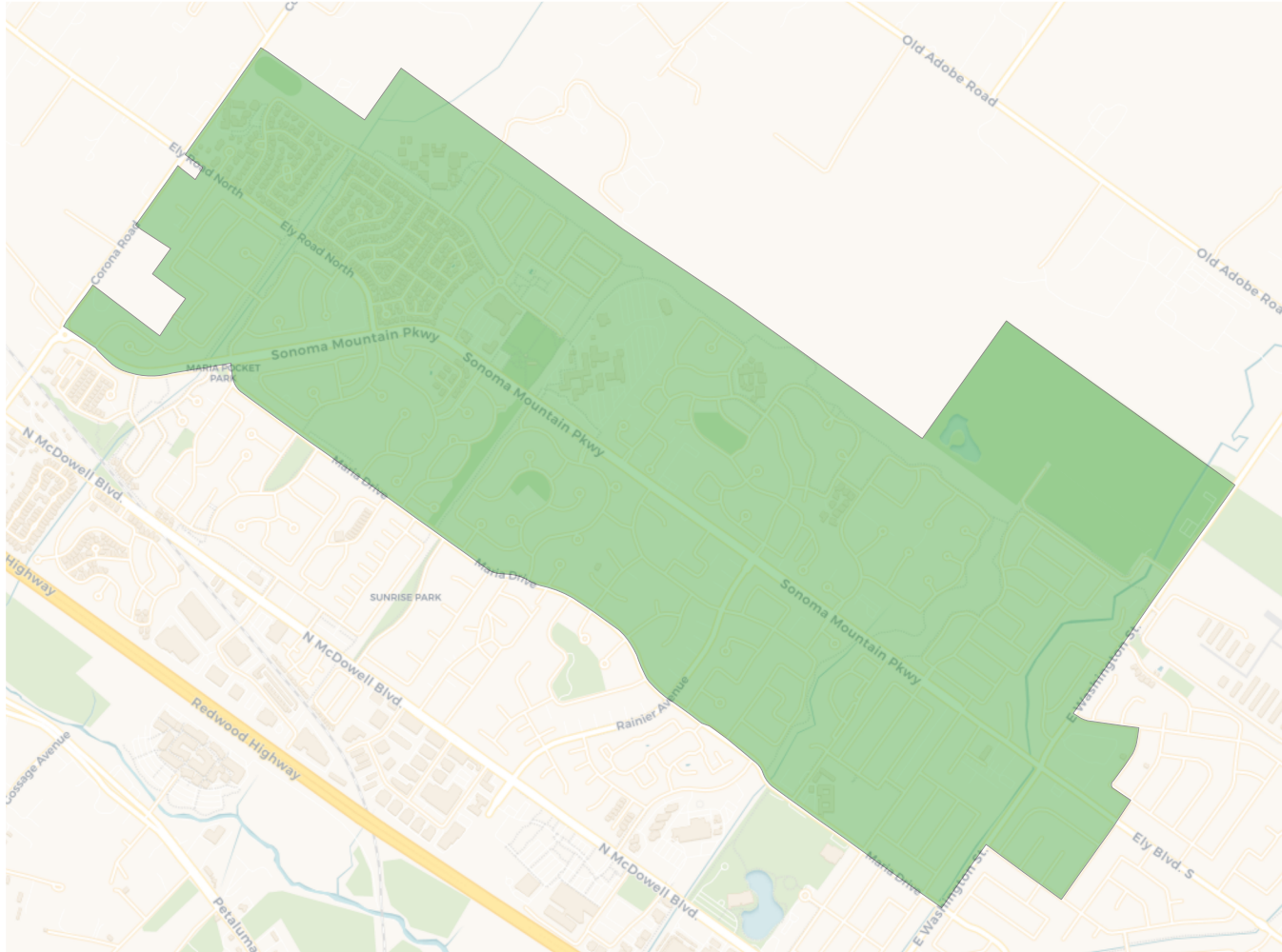


Citizen Voting Age Population

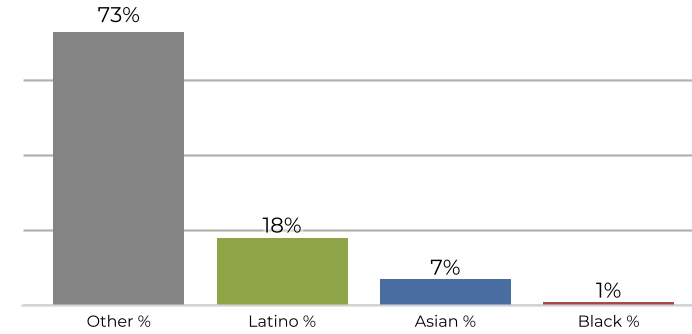


Population	Deviation	Deviation %	Other	Other %	Latino	Latino %	Asian	Asian %	Black	Black %
9,943	-31	-0.3%	6,313	63.5%	3,013	30.3%	498	5.0%	119	1.2%
Total CVAP	Other CVAP	Other CVAP %	Latino CVAP	Latino CVAP %	Asian CVAP	Asian CVAP %	Black CVAP	Black CVAP %		
7,239	5,661	78.2%	1,268	17.5%	193	2.7%	117	1.6%		

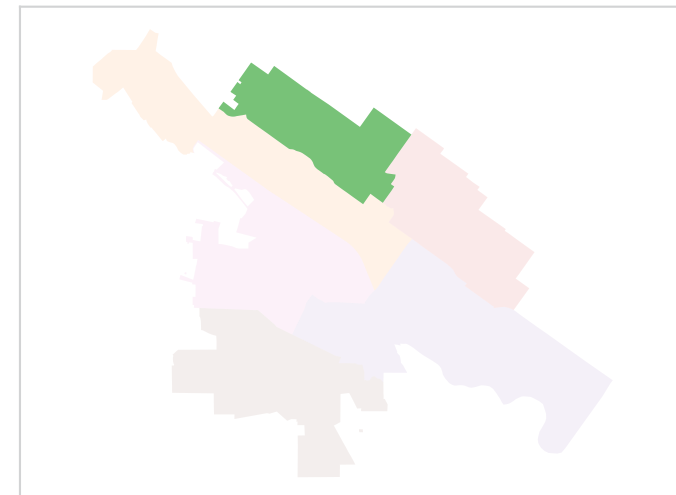
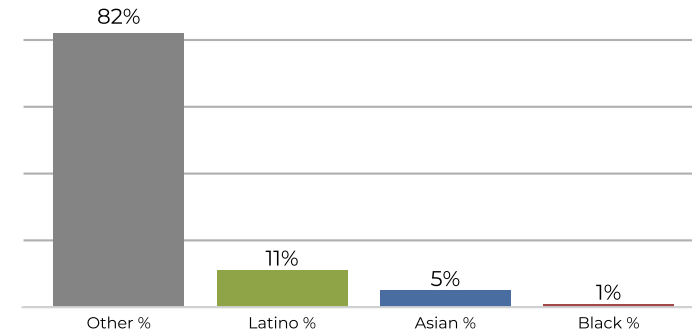
District B



2020 Census

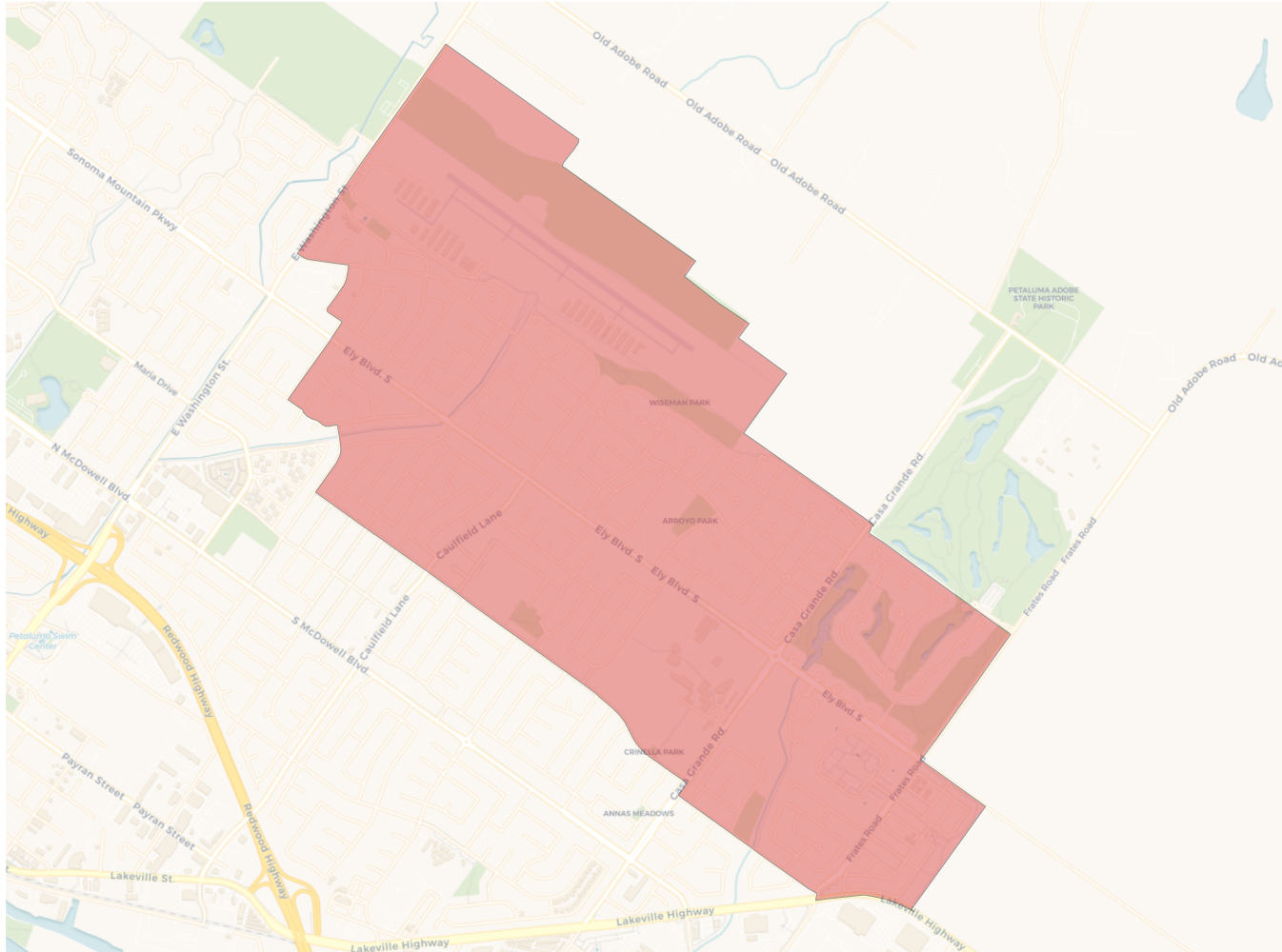


Citizen Voting Age Population

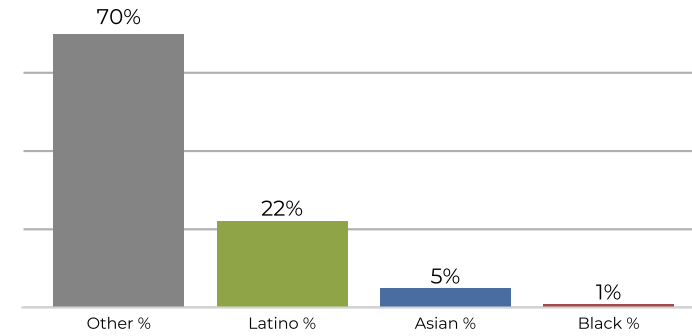


Population	Deviation	Deviation %	Other	Other %	Latino	Latino %	Asian	Asian %	Black	Black %
9,934	-40	-0.4%	7,305	73.5%	1,789	18.0%	717	7.2%	123	1.2%
Total CVAP	Other CVAP	Other CVAP %	Latino CVAP	Latino CVAP %	Asian CVAP	Asian CVAP %	Black CVAP	Black CVAP %		
6,961	5,721	82.2%	764	11.0%	403	5.8%	73	1.0%		

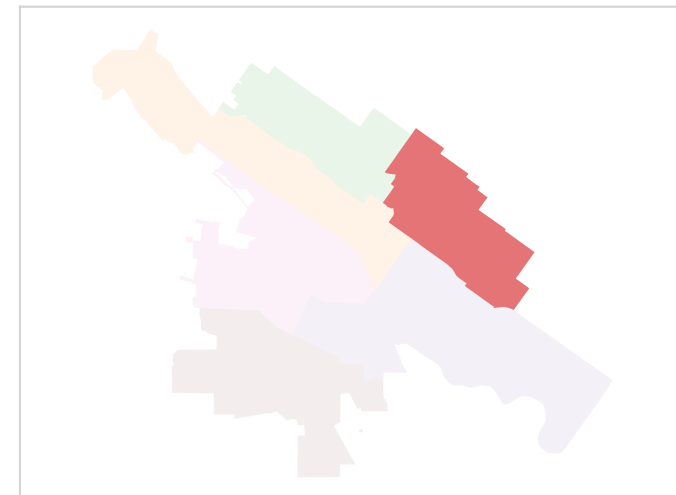
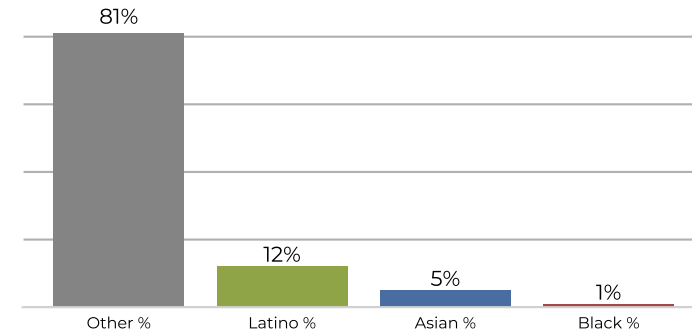
District C



2020 Census

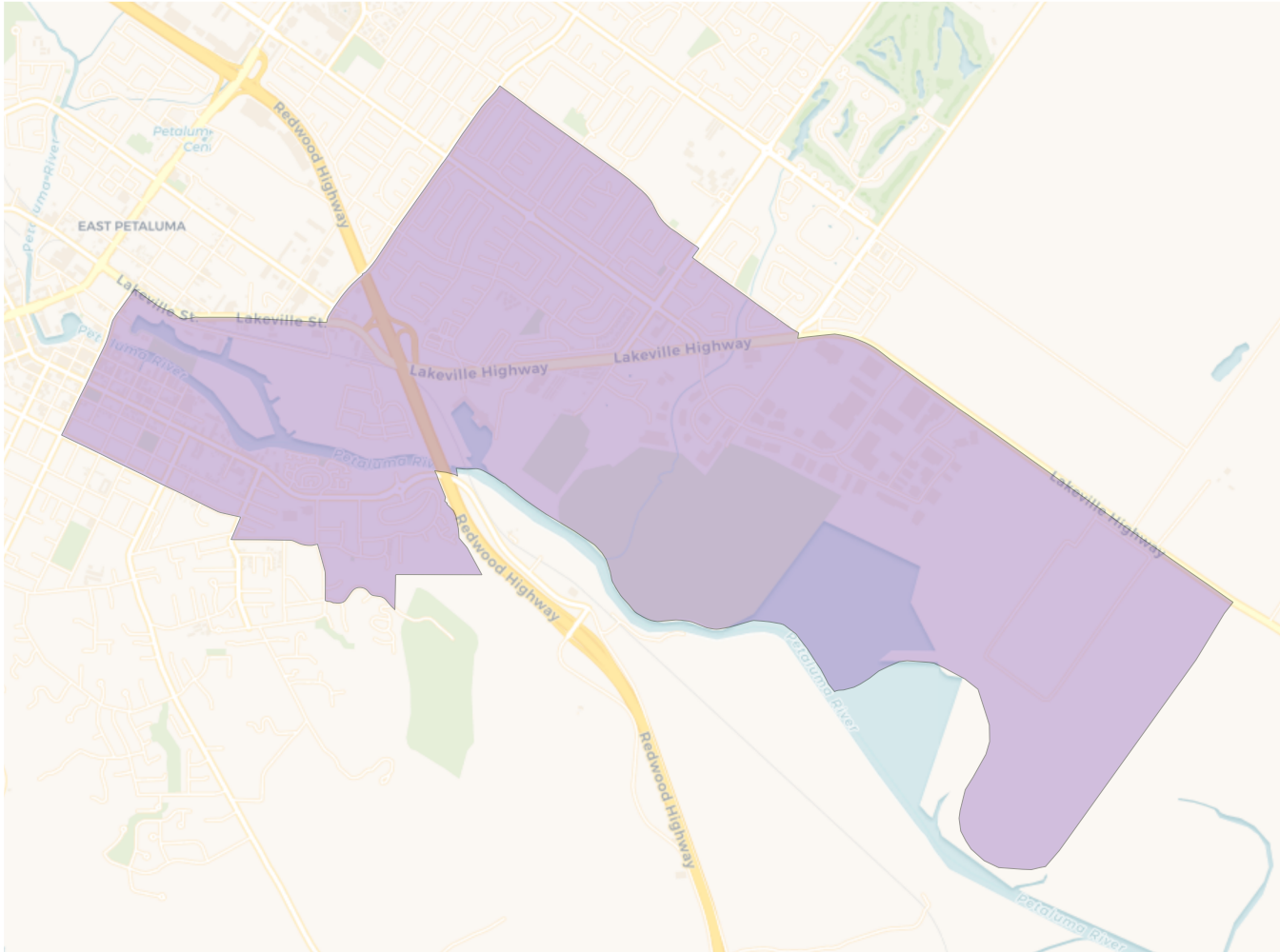


Citizen Voting Age Population

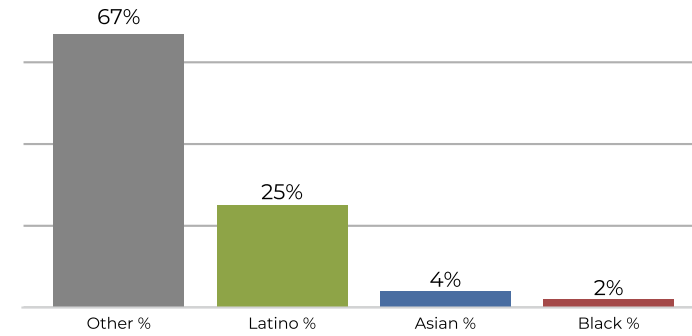


Population	Deviation	Deviation %	Other	Other %	Latino	Latino %	Asian	Asian %	Black	Black %
9,935	-39	-0.4%	6,964	70.1%	2,262	22.8%	576	5.8%	133	1.3%
Total CVAP	Other CVAP	Other CVAP %	Latino CVAP	Latino CVAP %	Asian CVAP	Asian CVAP %	Black CVAP	Black CVAP %		
7,374	5,970	81.0%	942	12.8%	381	5.2%	81	1.1%		

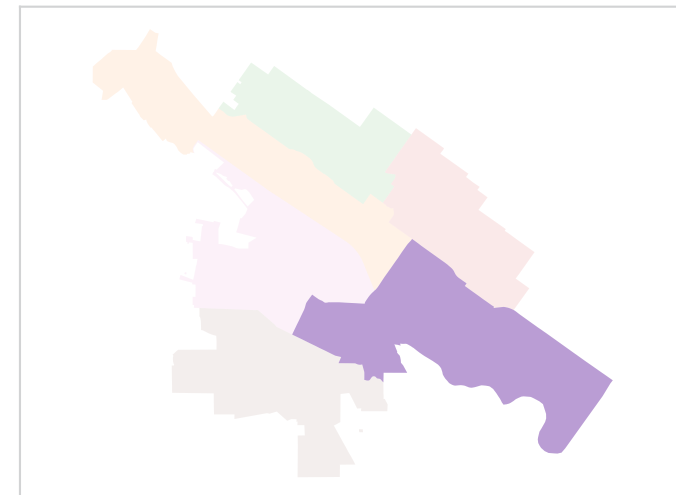
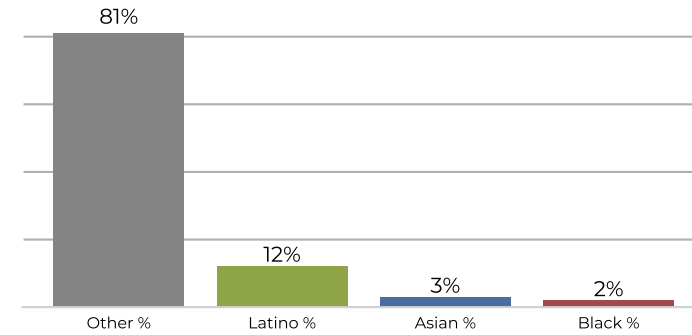
District D



2020 Census

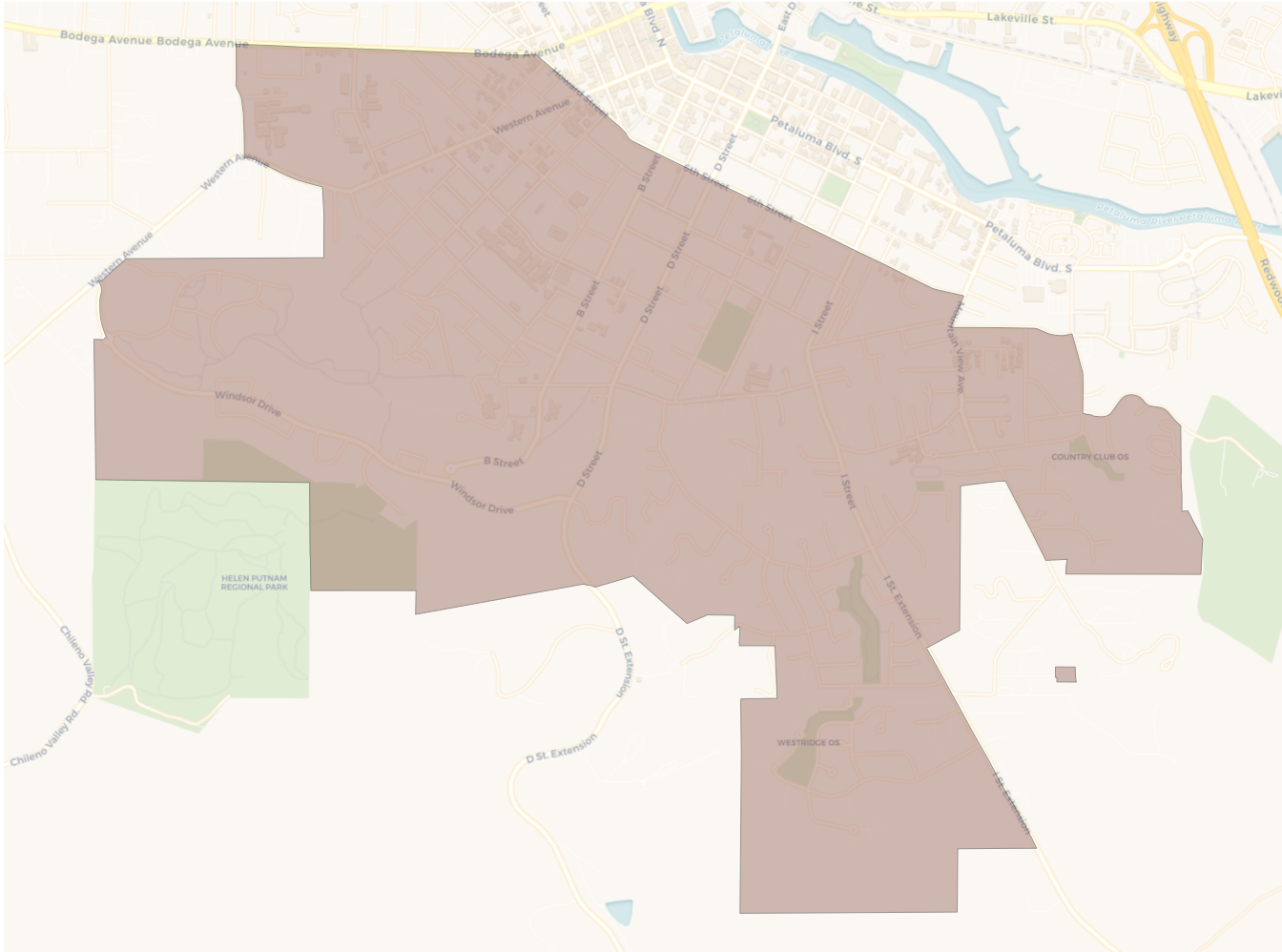


Citizen Voting Age Population

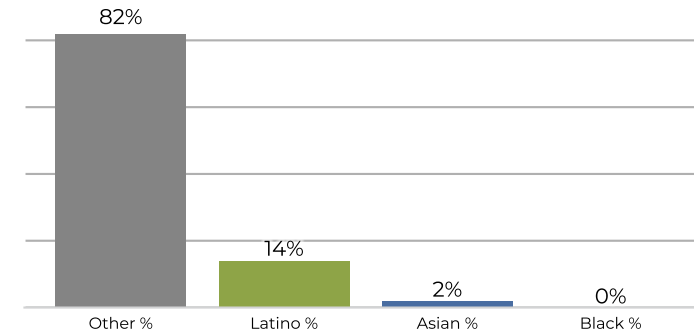


Population	Deviation	Deviation %	Other	Other %	Latino	Latino %	Asian	Asian %	Black	Black %
10,187	213	2.1%	6,904	67.8%	2,574	25.3%	495	4.9%	214	2.1%
Total CVAP	Other CVAP	Other CVAP %	Latino CVAP	Latino CVAP %	Asian CVAP	Asian CVAP %	Black CVAP	Black CVAP %		
6,899	5,617	81.4%	858	12.4%	263	3.8%	161	2.3%		

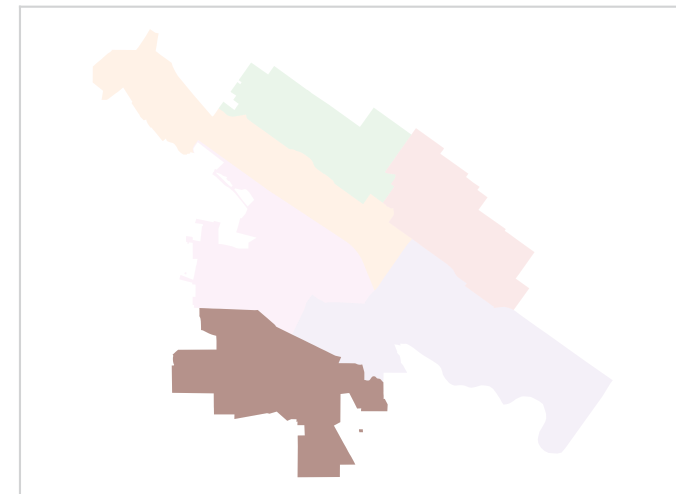
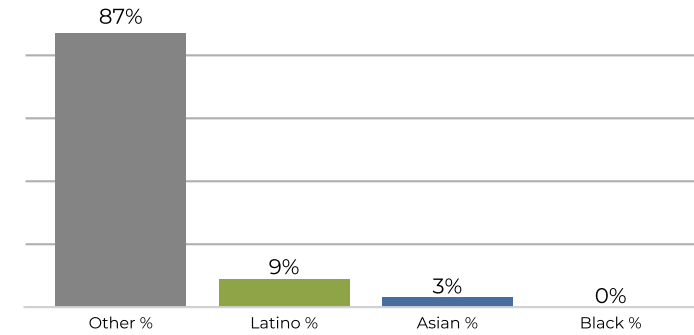
District E



2020 Census

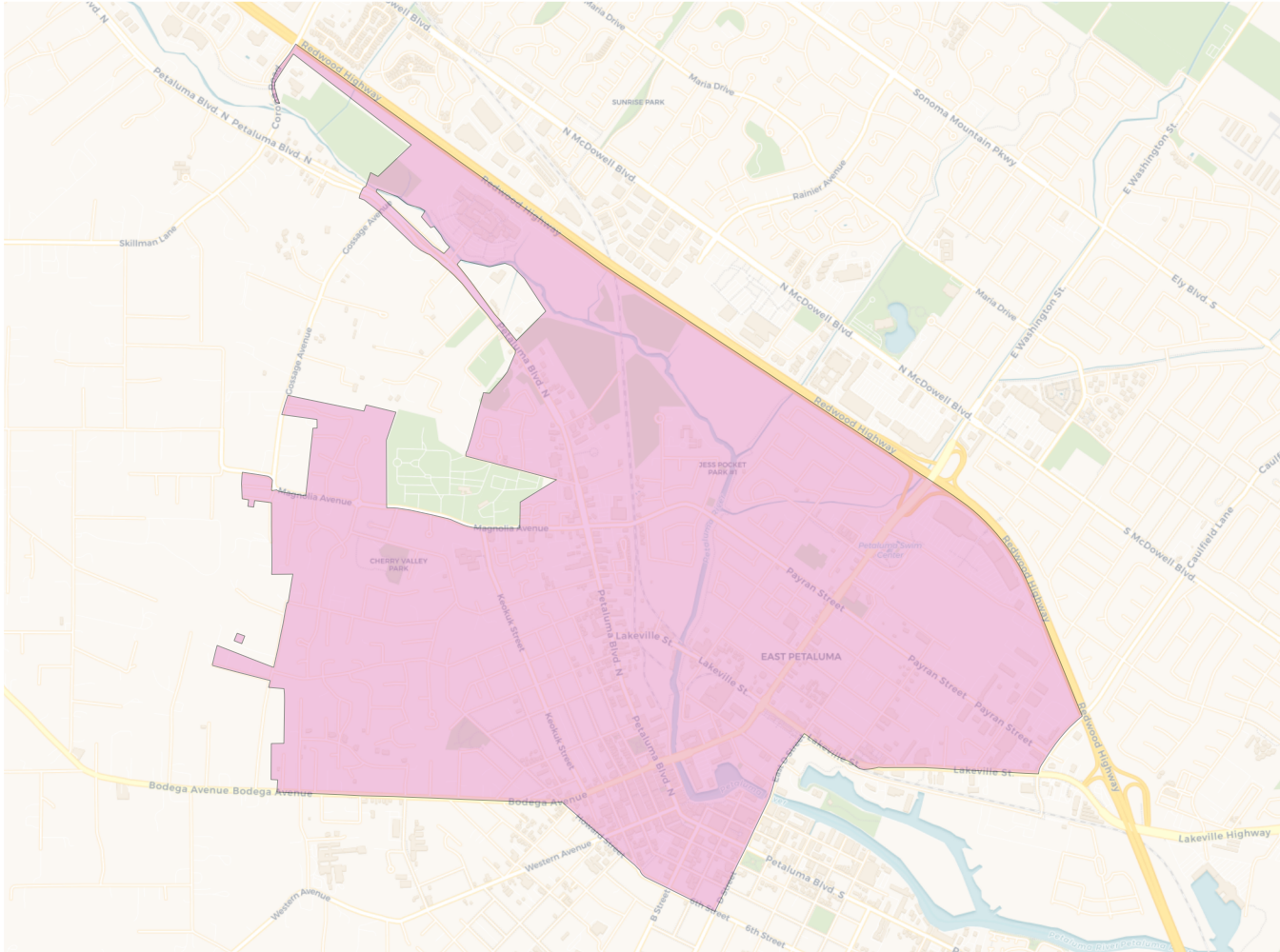


Citizen Voting Age Population

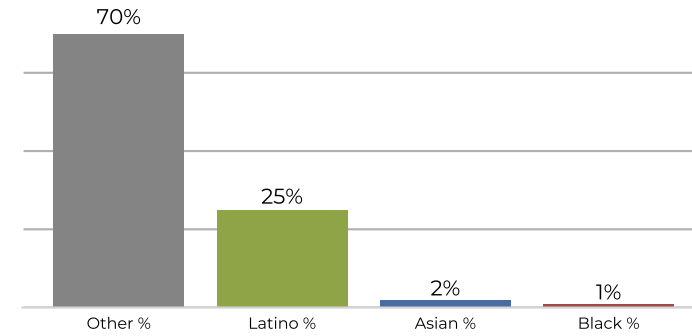


Population	Deviation	Deviation %	Other	Other %	Latino	Latino %	Asian	Asian %	Black	Black %
9,789	-185	-1.9%	8,051	82.2%	1,410	14.4%	253	2.6%	75	0.8%
Total CVAP	Other CVAP	Other CVAP %	Latino CVAP	Latino CVAP %	Asian CVAP	Asian CVAP %	Black CVAP	Black CVAP %		
7,571	6,599	87.2%	721	9.5%	239	3.2%	12	0.2%		

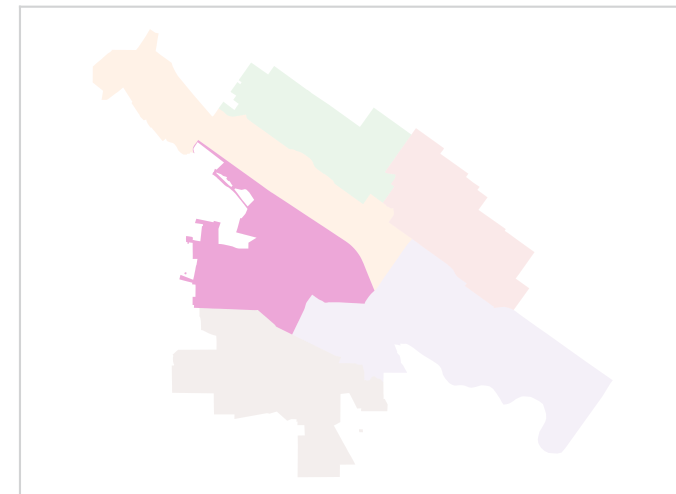
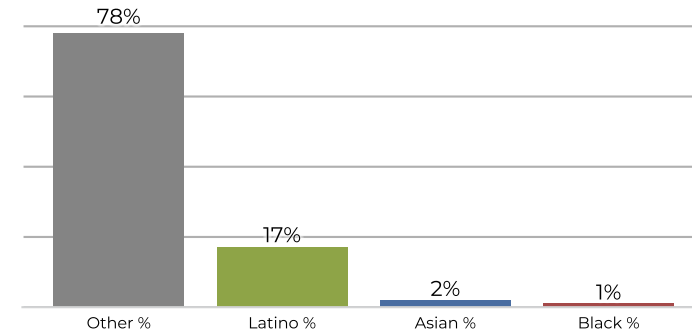
District F



2020 Census



Citizen Voting Age Population



Population	Deviation	Deviation %	Other	Other %	Latino	Latino %	Asian	Asian %	Black	Black %
10,058	84	0.8%	7,077	70.4%	2,586	25.7%	273	2.7%	122	1.2%
Total CVAP	Other CVAP	Other CVAP %	Latino CVAP	Latino CVAP %	Asian CVAP	Asian CVAP %	Black CVAP	Black CVAP %		
7,278	5,714	78.5%	1,277	17.5%	185	2.5%	102	1.4%		