

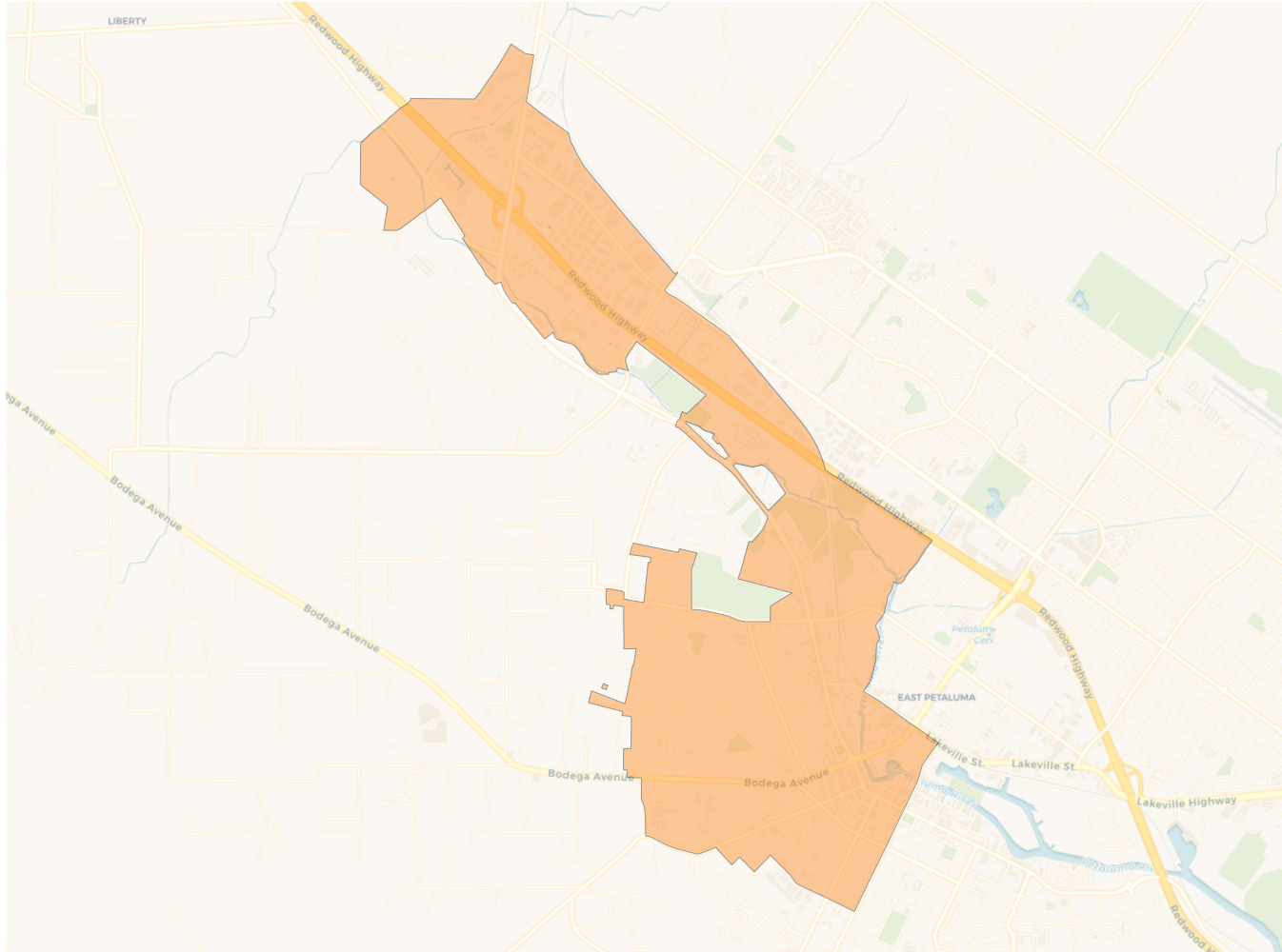
2020 Census

	A	B	C	D	E	F
Population	10,115	9,849	9,825	9,875	10,281	9,901
Deviation	141	-125	-149	-99	307	-73
Deviation %	1.4%	-1.3%	-1.5%	-1.0%	3.1%	-0.7%
Other	7,674	7,151	6,477	6,964	6,088	8,260
Other %	75.9%	72.6%	65.9%	70.5%	59.2%	83.4%
Latino	2,062	1,787	2,806	2,198	3,547	1,234
Latino %	20.4%	18.1%	28.6%	22.3%	34.5%	12.5%
Asian	256	796	432	579	412	337
Asian %	2.5%	8.1%	4.4%	5.9%	4.0%	3.4%
Black	123	115	110	134	234	70
Black %	1.2%	1.2%	1.1%	1.4%	2.3%	0.7%

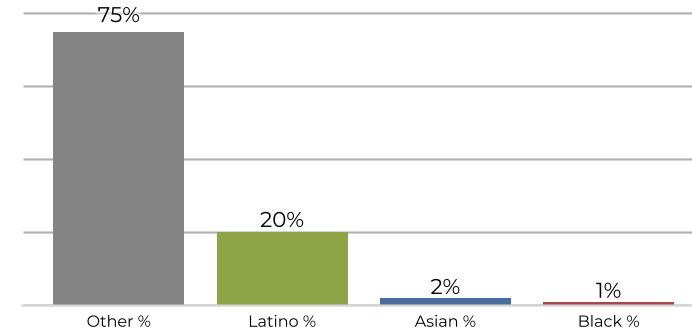
Citizen Voting Age Population (CVAP)

	A	B	C	D	E	F
Total CVAP	7,432	6,946	7,032	7,261	6,762	7,889
Other CVAP	6,219	5,608	5,549	5,945	5,090	6,871
Other CVAP %	83.7%	80.7%	78.9%	81.9%	75.3%	87.1%
Latino CVAP	941	816	1,170	924	1,298	681
Latino CVAP %	12.7%	11.7%	16.6%	12.7%	19.2%	8.6%
Asian CVAP	165	439	178	351	279	252
Asian CVAP %	2.2%	6.3%	2.5%	4.8%	4.1%	3.2%
Black CVAP	107	83	135	41	95	85
Black CVAP %	1.4%	1.2%	1.9%	0.6%	1.4%	1.1%

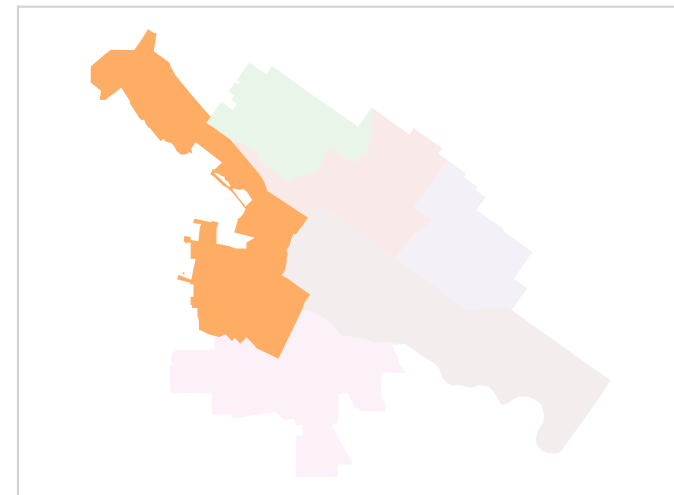
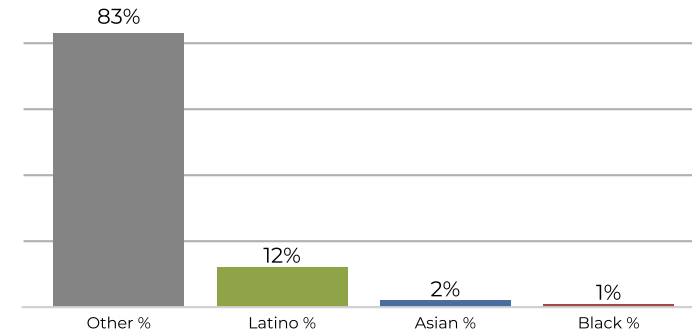
District A



2020 Census

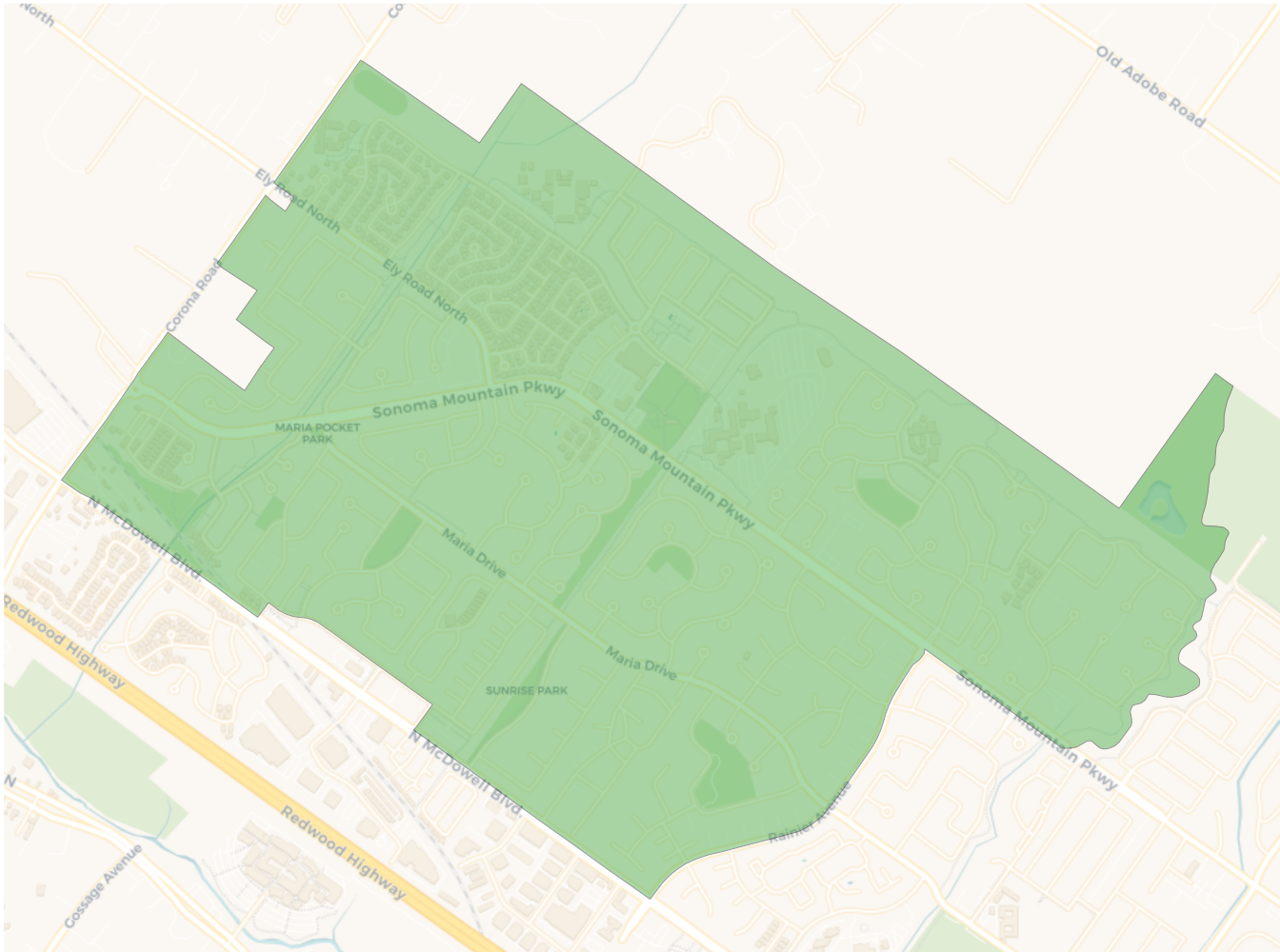


Citizen Voting Age Population

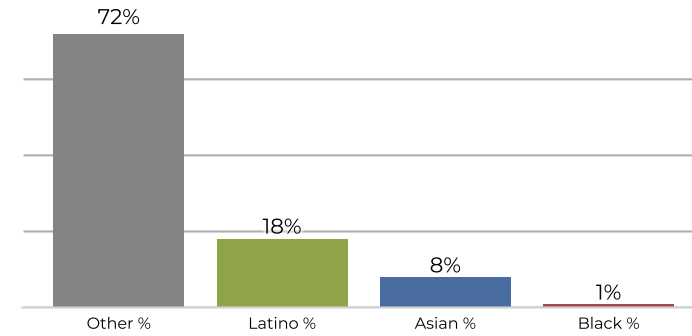


Population	Deviation	Deviation %	Other	Other %	Latino	Latino %	Asian	Asian %	Black	Black %
10,115	141	1.4%	7,674	75.9%	2,062	20.4%	256	2.5%	123	1.2%
Total CVAP	Other CVAP	Other CVAP %	Latino CVAP	Latino CVAP %	Asian CVAP	Asian CVAP %	Black CVAP	Black CVAP %		
7,432	6,219	83.7%	941	12.7%	165	2.2%	107	1.4%		

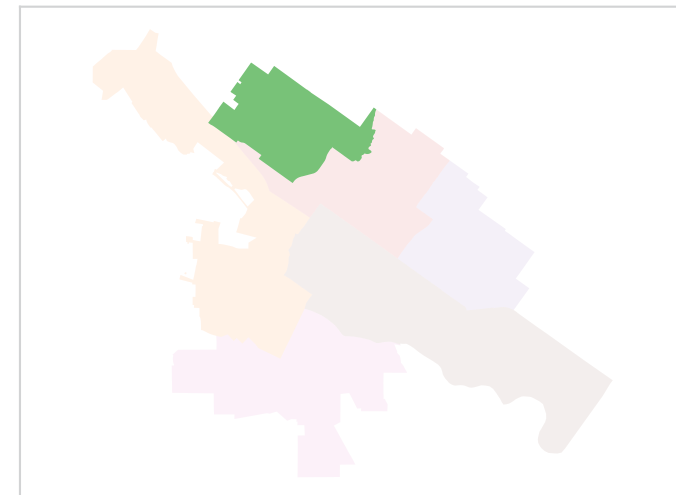
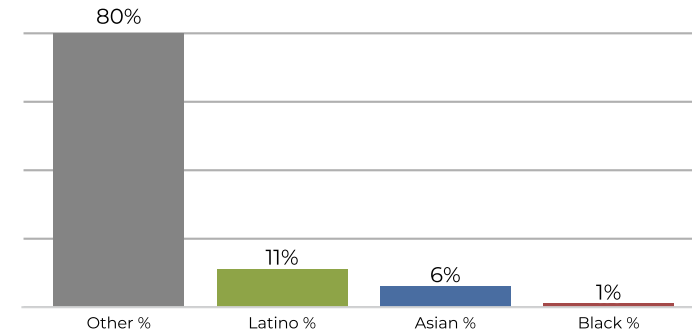
District B



2020 Census

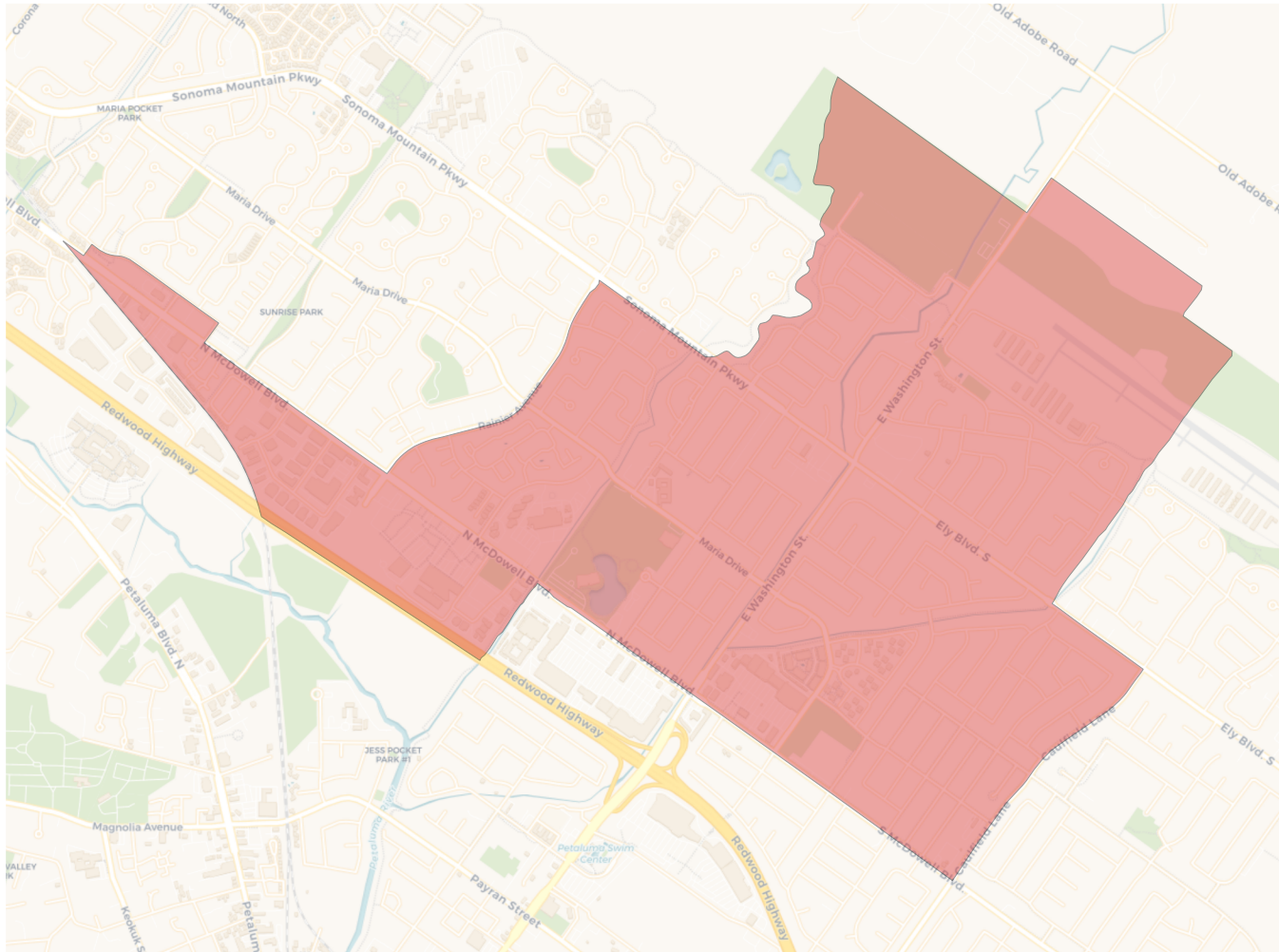


Citizen Voting Age Population

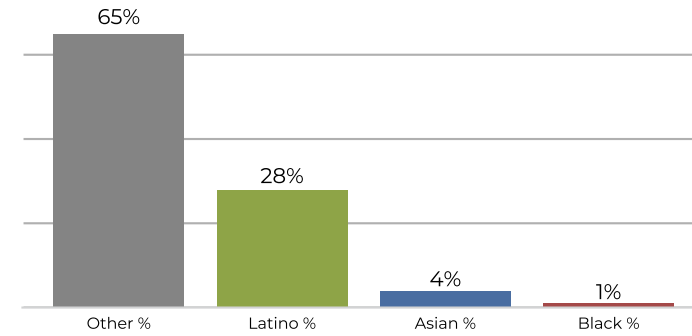


Population	Deviation	Deviation %	Other	Other %	Latino	Latino %	Asian	Asian %	Black	Black %
9,849	-125	-1.3%	7,151	72.6%	1,787	18.1%	796	8.1%	115	1.2%
Total CVAP	Other CVAP	Other CVAP %	Latino CVAP	Latino CVAP %	Asian CVAP	Asian CVAP %	Black CVAP	Black CVAP %		
6,946	5,608	80.7%	816	11.7%	439	6.3%	83	1.2%		

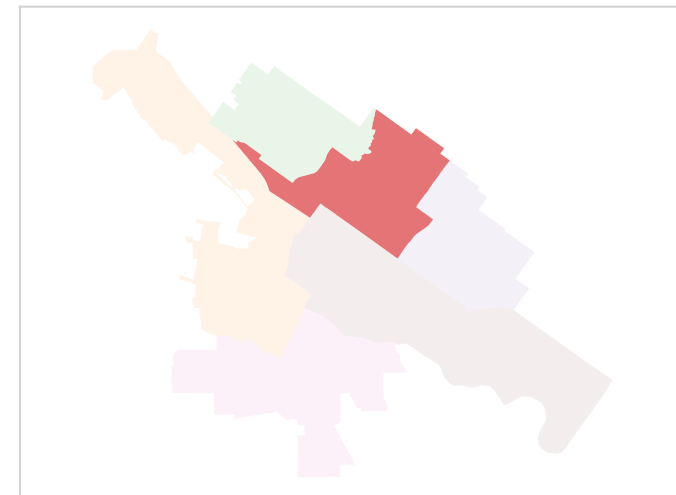
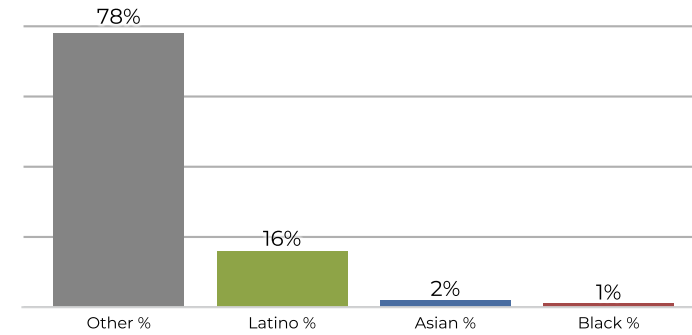
District C



2020 Census

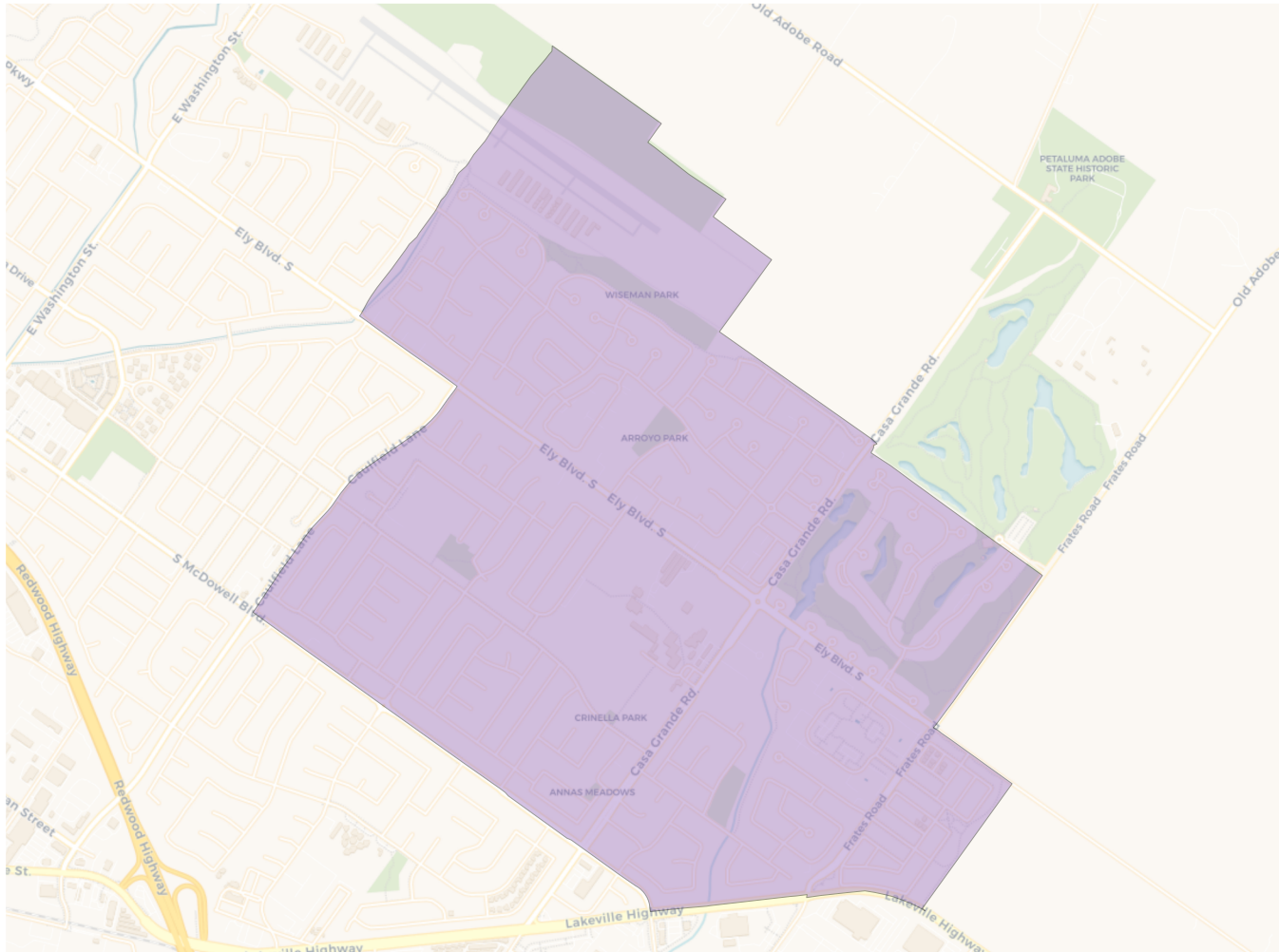


Citizen Voting Age Population

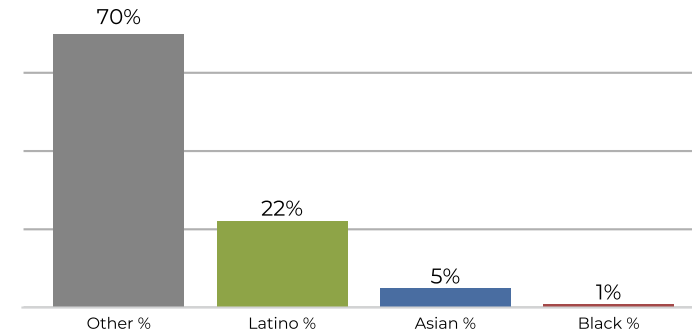


Population	Deviation	Deviation %	Other	Other %	Latino	Latino %	Asian	Asian %	Black	Black %
9,825	-149	-1.5%	6,477	65.9%	2,806	28.6%	432	4.4%	110	1.1%
Total CVAP	Other CVAP	Other CVAP %	Latino CVAP	Latino CVAP %	Asian CVAP	Asian CVAP %	Black CVAP	Black CVAP %		
7,032	5,549	78.9%	1,170	16.6%	178	2.5%	135	1.9%		

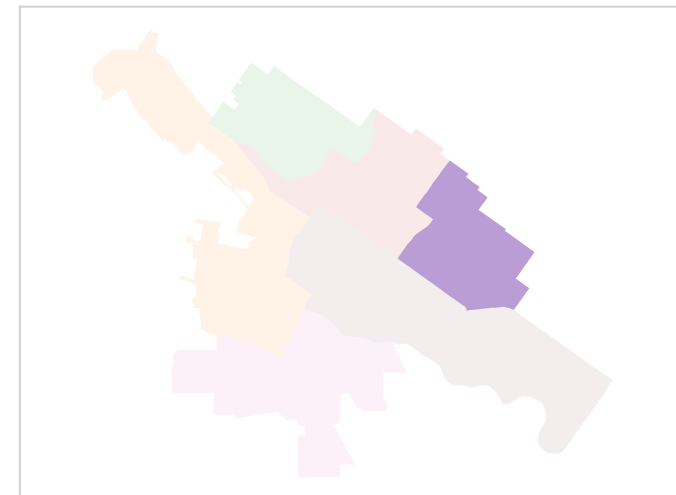
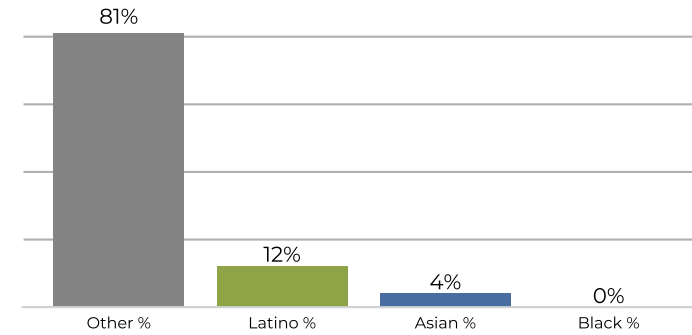
District D



2020 Census

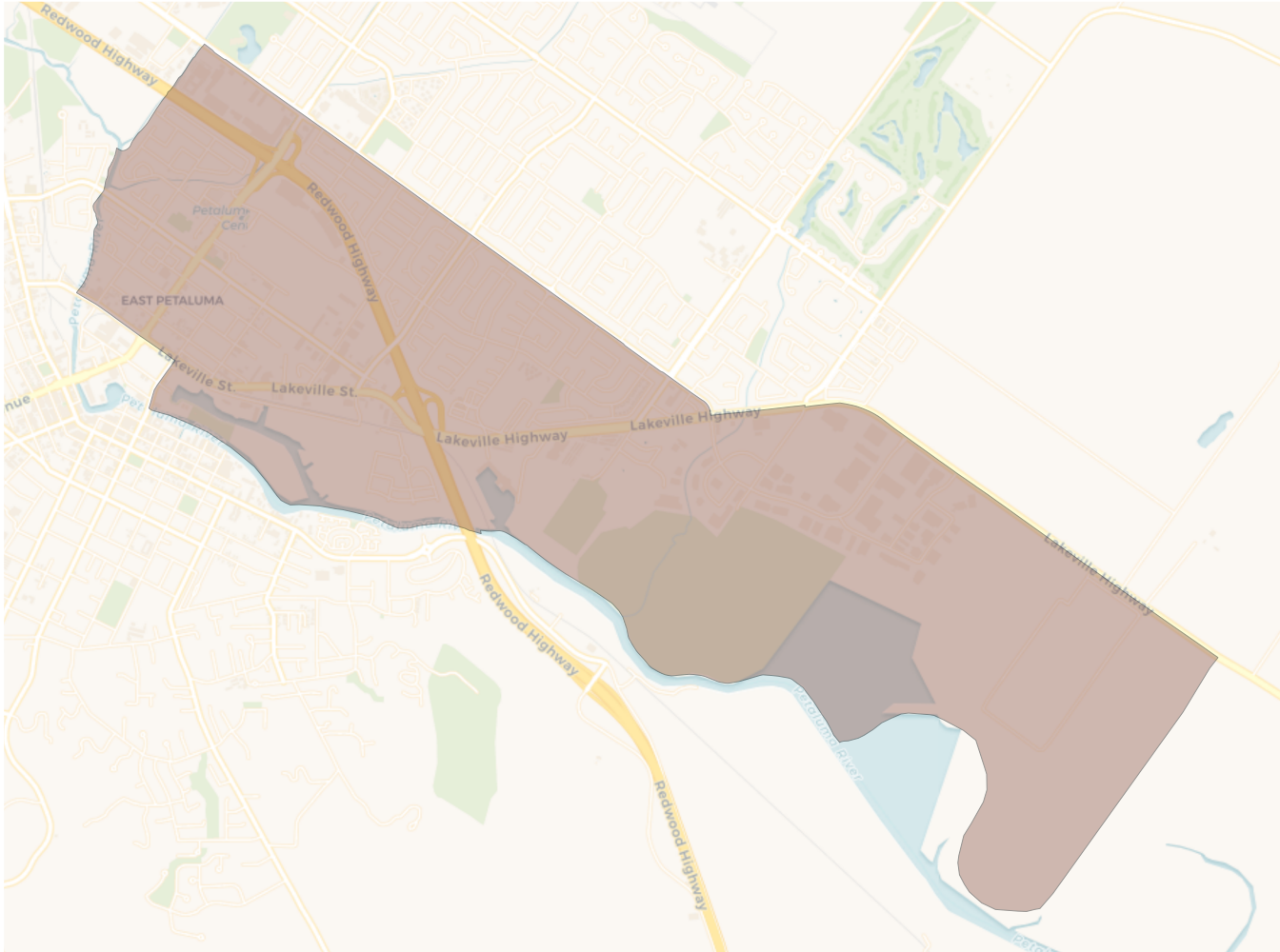


Citizen Voting Age Population

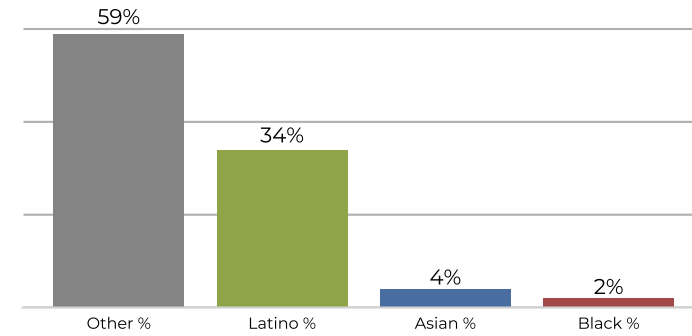


Population	Deviation	Deviation %	Other	Other %	Latino	Latino %	Asian	Asian %	Black	Black %
9,875	-99	-1.0%	6,964	70.5%	2,198	22.3%	579	5.9%	134	1.4%
Total CVAP	Other CVAP	Other CVAP %	Latino CVAP	Latino CVAP %	Asian CVAP	Asian CVAP %	Black CVAP	Black CVAP %		
7,261	5,945	81.9%	924	12.7%	351	4.8%	41	0.6%		

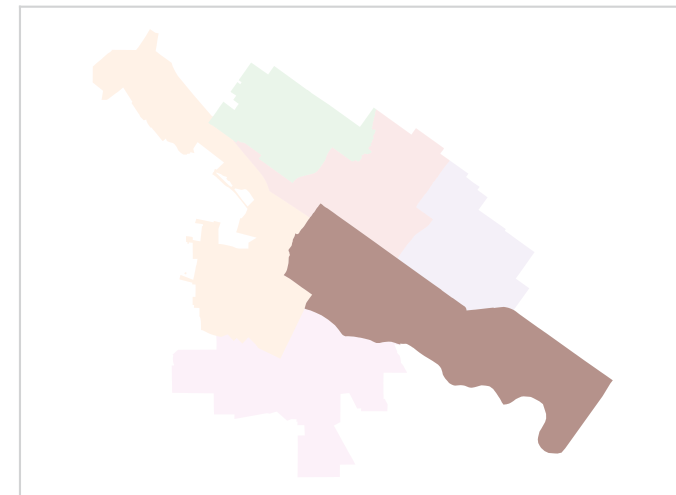
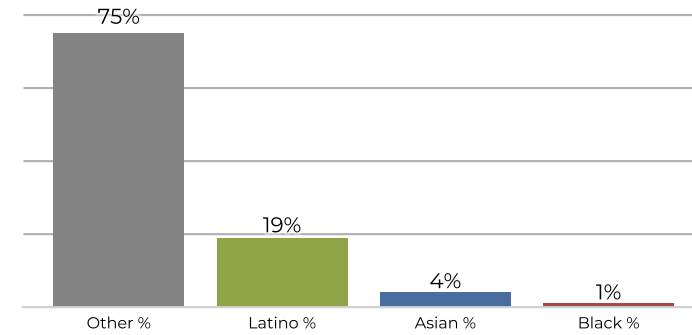
District E



2020 Census

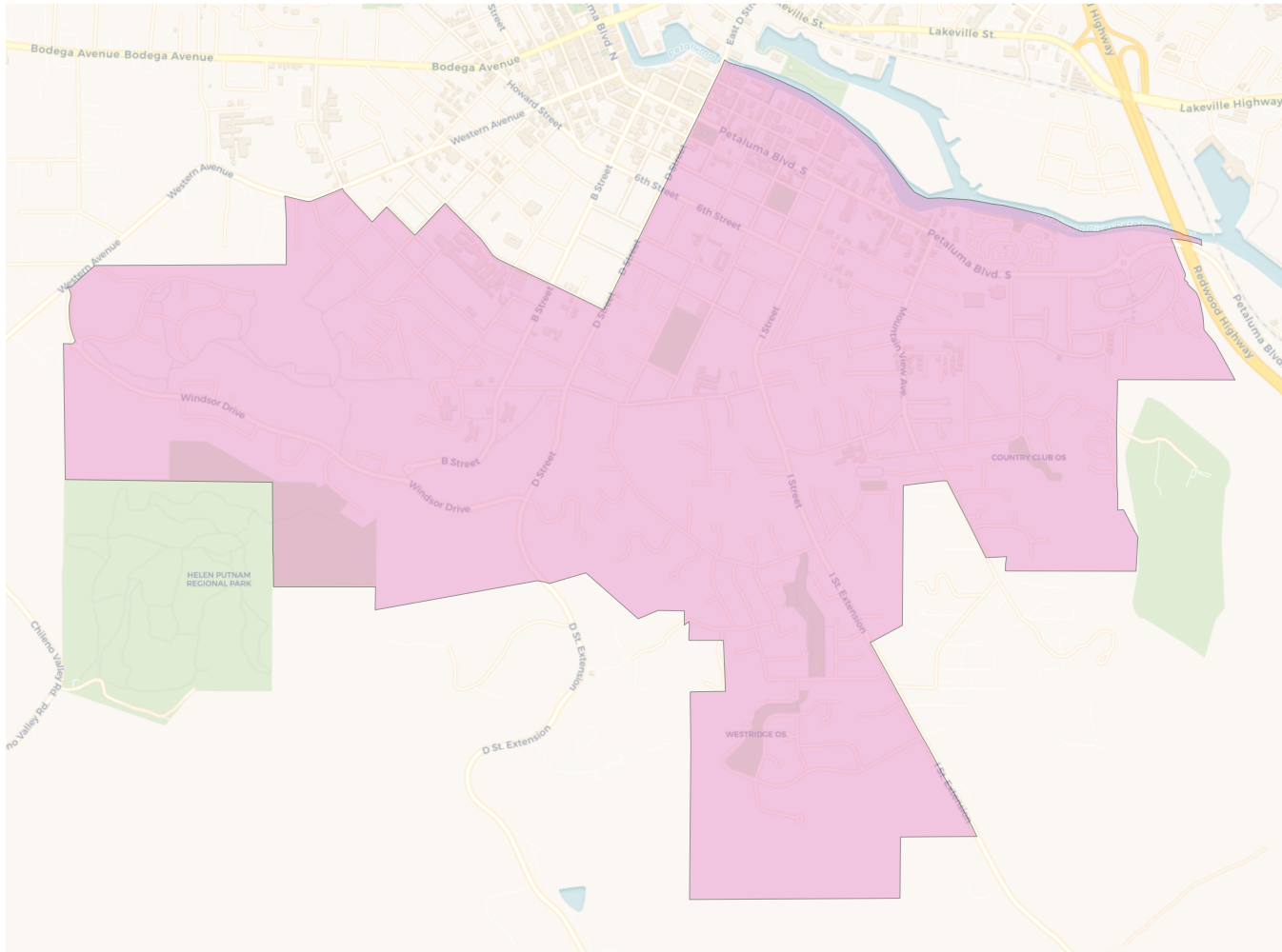


Citizen Voting Age Population

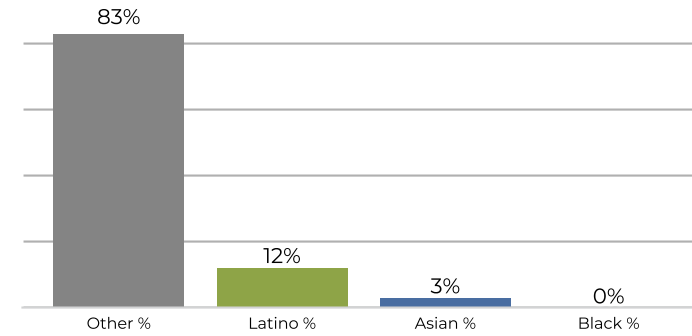


Population	Deviation	Deviation %	Other	Other %	Latino	Latino %	Asian	Asian %	Black	Black %
10,281	307	3.1%	6,088	59.2%	3,547	34.5%	412	4.0%	234	2.3%
Total CVAP	Other CVAP	Other CVAP %	Latino CVAP	Latino CVAP %	Asian CVAP	Asian CVAP %	Black CVAP	Black CVAP %		
6,762	5,090	75.3%	1,298	19.2%	279	4.1%	95	1.4%		

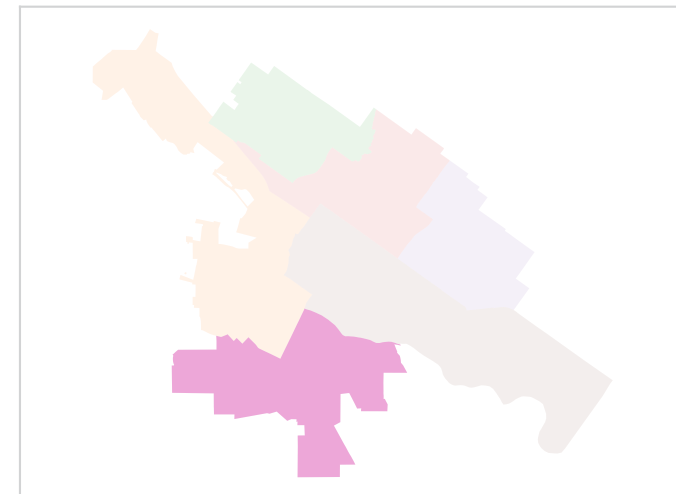
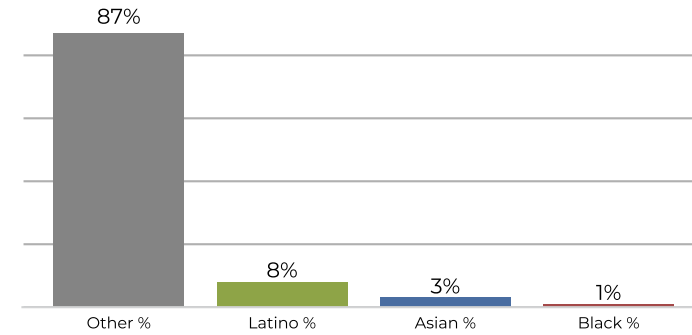
District F



2020 Census



Citizen Voting Age Population



Population	Deviation	Deviation %	Other	Other %	Latino	Latino %	Asian	Asian %	Black	Black %
9,901	-73	-0.7%	8,260	83.4%	1,234	12.5%	337	3.4%	70	0.7%
Total CVAP	Other CVAP	Other CVAP %	Latino CVAP	Latino CVAP %	Asian CVAP	Asian CVAP %	Black CVAP	Black CVAP %		
7,889	6,871	87.1%	681	8.6%	252	3.2%	85	1.1%		