

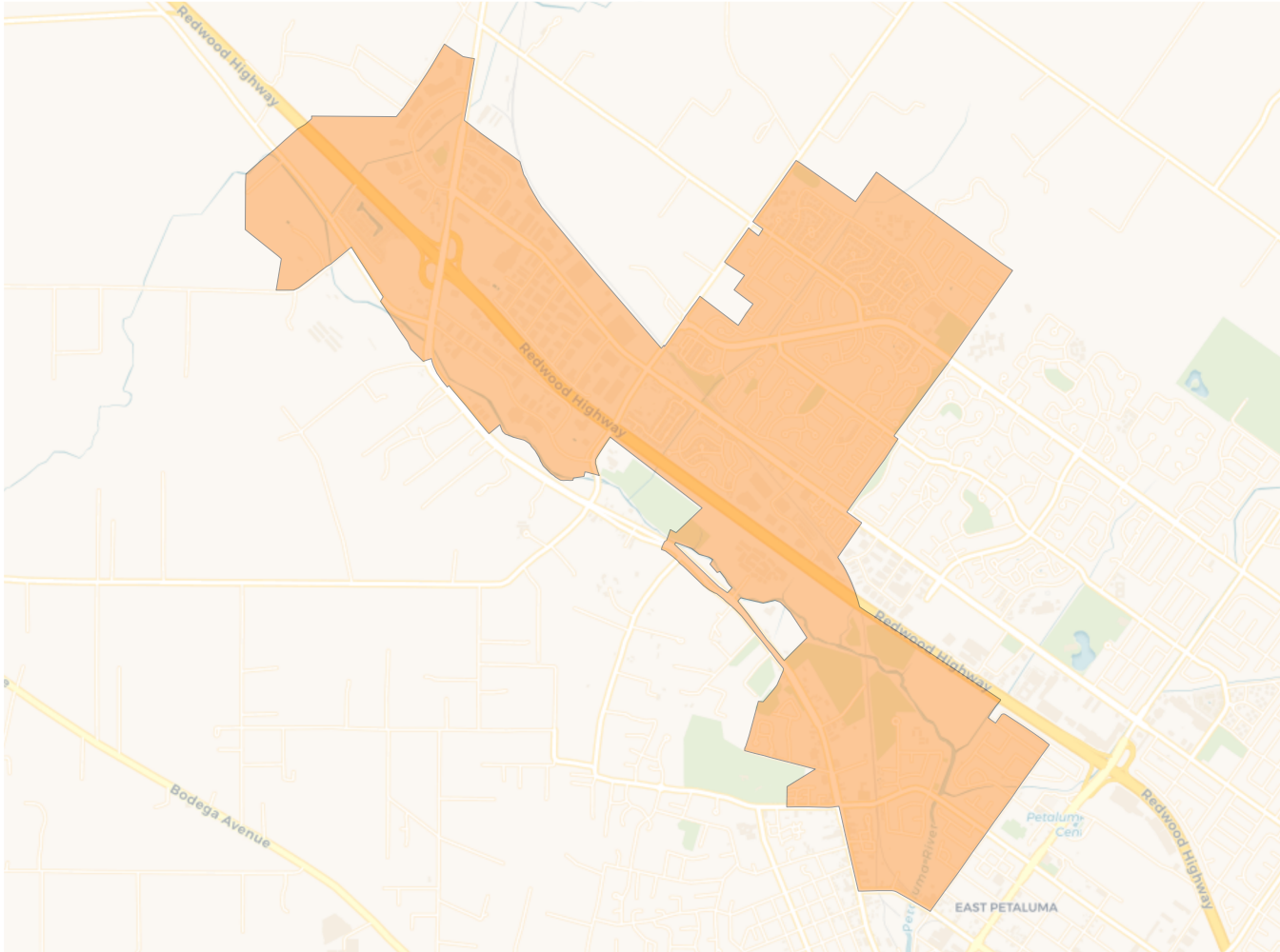
2020 Census

	A	B	C	D	E	F
Population	10,030	9,933	9,980	9,935	10,013	9,955
Deviation	56	-41	6	-39	39	-19
Deviation %	0.6%	-0.4%	0.1%	-0.4%	0.4%	-0.2%
Other	6,739	7,207	6,684	6,311	7,697	7,976
Other %	67.2%	72.6%	67.0%	63.5%	76.9%	80.1%
Latino	2,547	2,057	2,733	2,784	1,881	1,632
Latino %	25.4%	20.7%	27.4%	28.0%	18.8%	16.4%
Asian	606	572	431	620	325	258
Asian %	6.0%	5.8%	4.3%	6.2%	3.2%	2.6%
Black	138	97	132	220	110	89
Black %	1.4%	1.0%	1.3%	2.2%	1.1%	0.9%

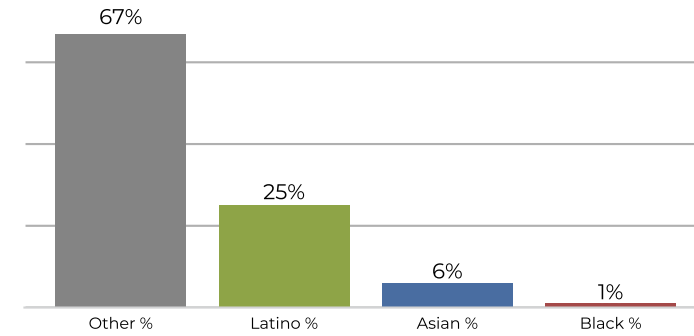
Citizen Voting Age Population (CVAP)

	A	B	C	D	E	F
Total CVAP	7,127	7,127	7,387	6,802	7,259	7,620
Other CVAP	5,654	5,867	5,910	5,410	6,077	6,364
Other CVAP %	79.3%	82.3%	80.0%	79.5%	83.7%	83.5%
Latino CVAP	996	863	1,181	931	896	963
Latino CVAP %	14.0%	12.1%	16.0%	13.7%	12.3%	12.6%
Asian CVAP	370	264	232	372	182	244
Asian CVAP %	5.2%	3.7%	3.1%	5.5%	2.5%	3.2%
Black CVAP	107	133	64	89	104	49
Black CVAP %	1.5%	1.9%	0.9%	1.3%	1.4%	0.6%

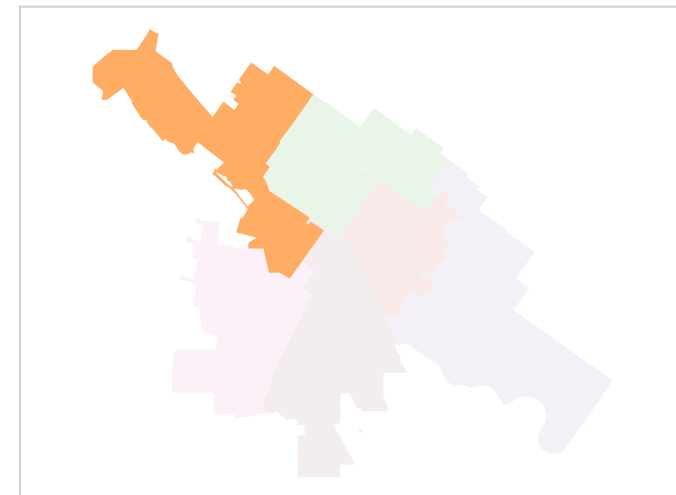
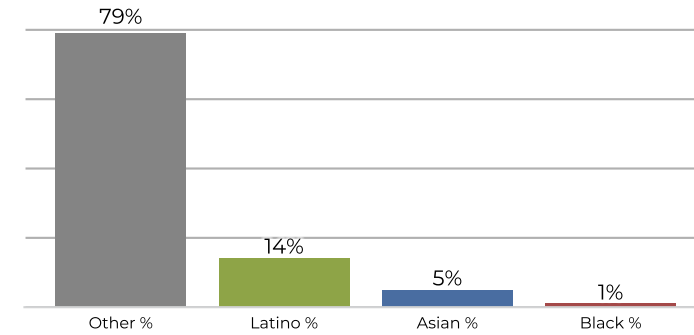
District A



2020 Census

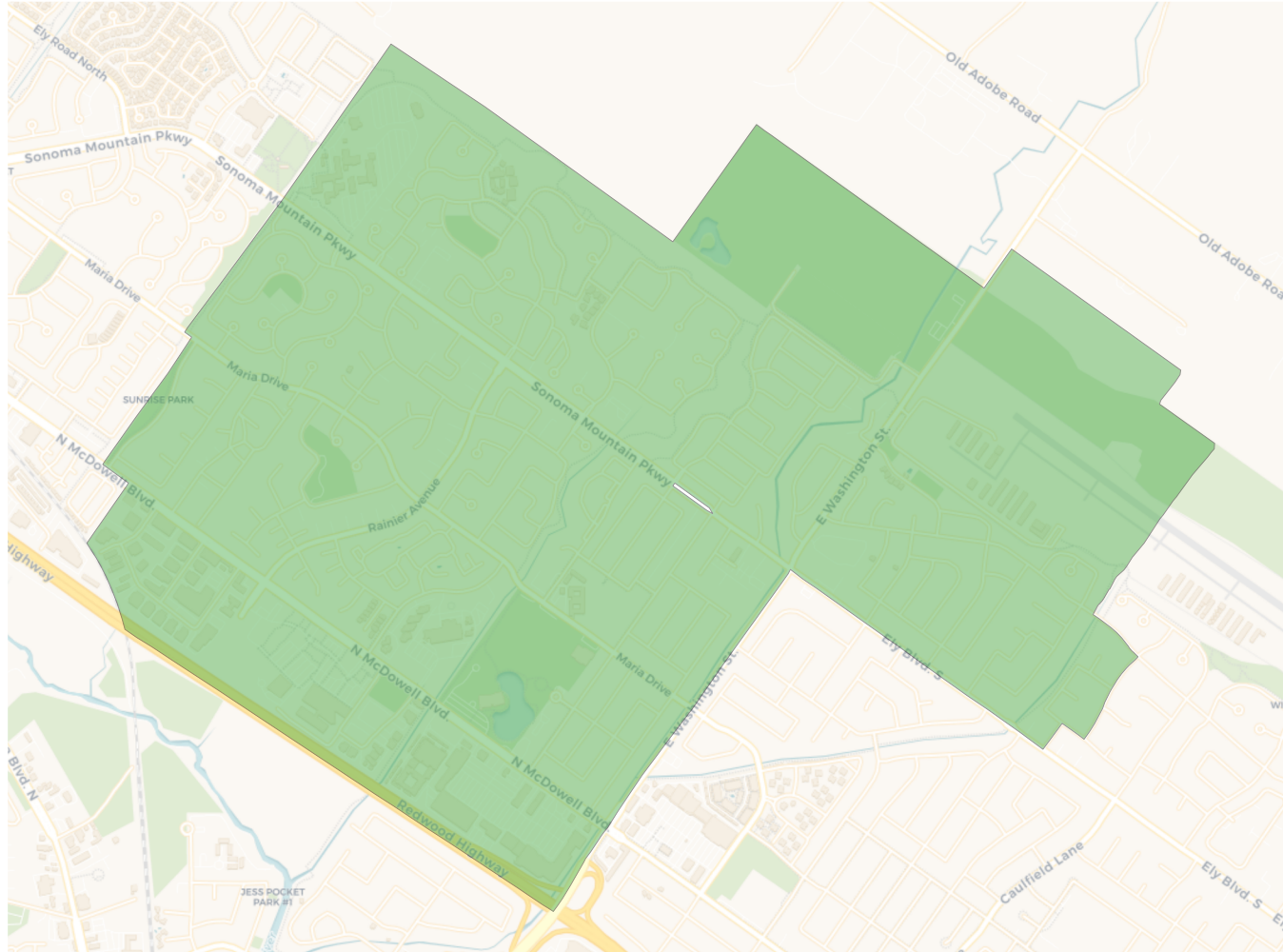


Citizen Voting Age Population

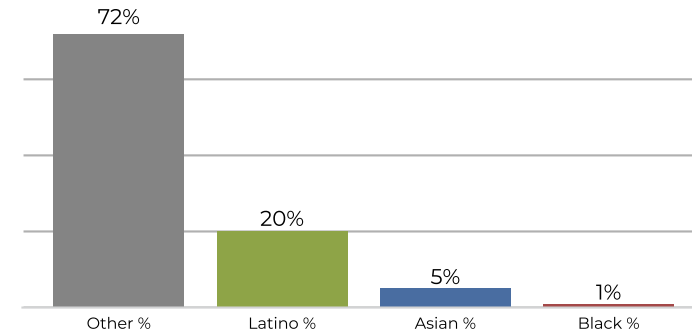


Population	Deviation	Deviation %	Other	Other %	Latino	Latino %	Asian	Asian %	Black	Black %
10,030	56	0.6%	6,739	67.2%	2,547	25.4%	606	6.0%	138	1.4%
Total CVAP	Other CVAP	Other CVAP %	Latino CVAP	Latino CVAP %	Asian CVAP	Asian CVAP %	Black CVAP	Black CVAP %		
7,127	5,654	79.3%	996	14.0%	370	5.2%	107	1.5%		

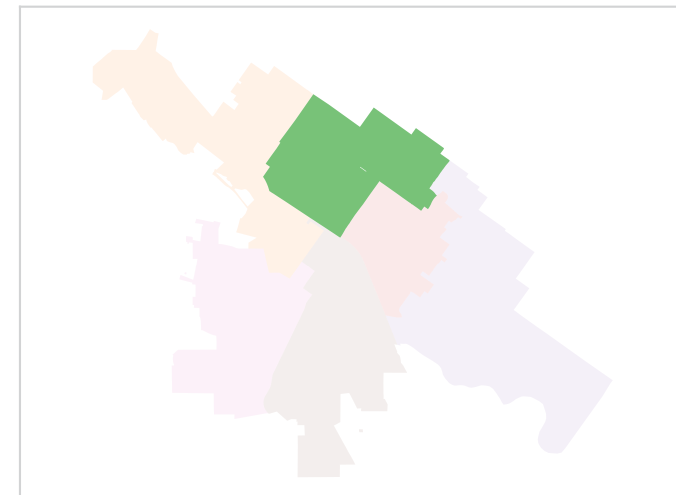
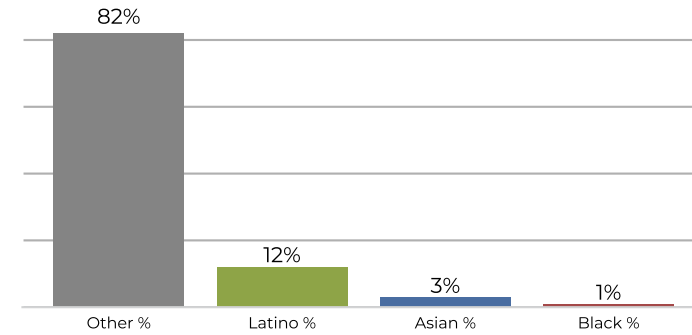
District B



2020 Census

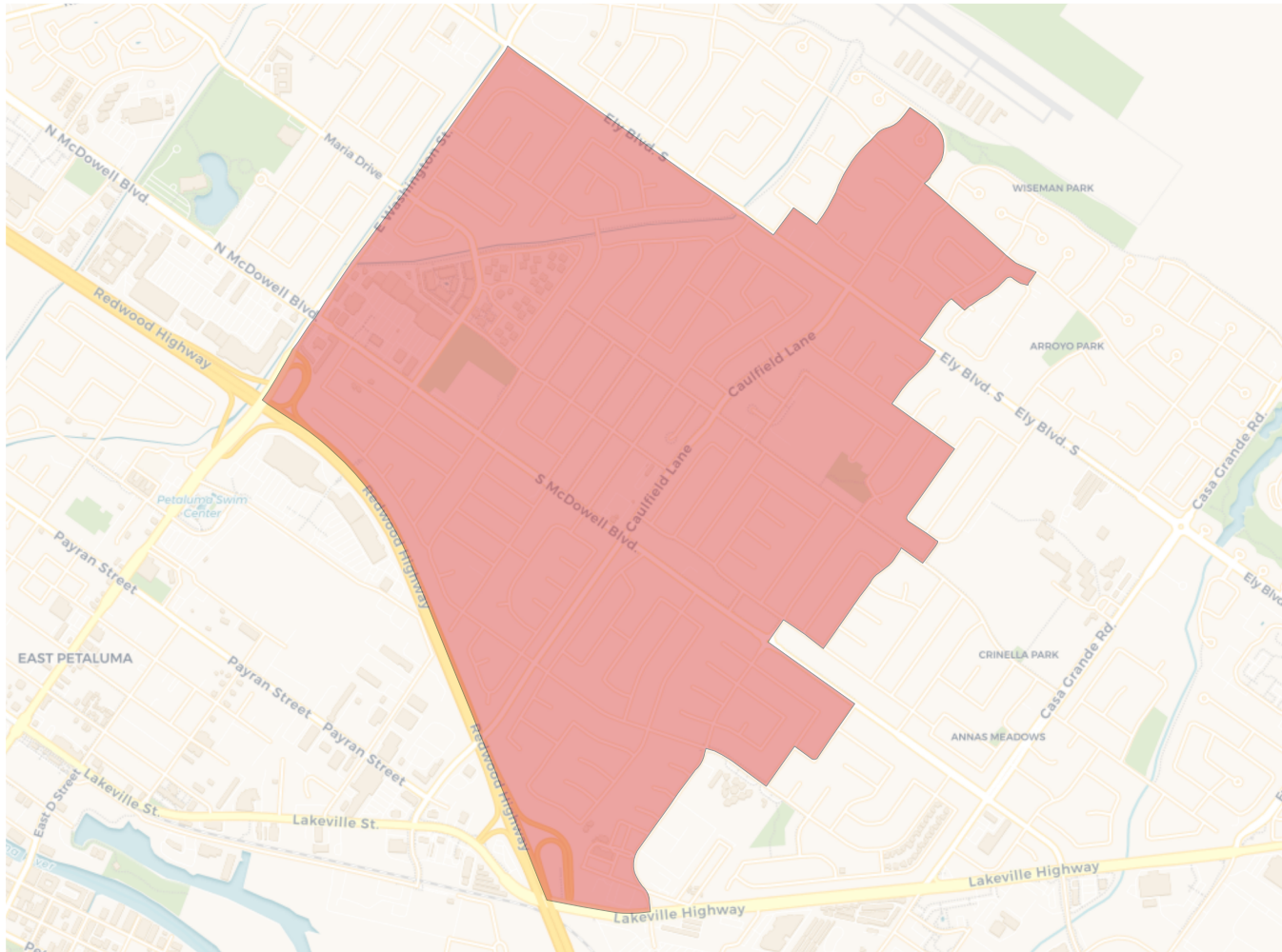


Citizen Voting Age Population

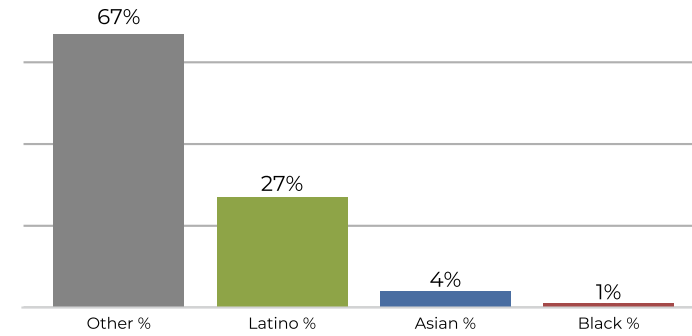


Population	Deviation	Deviation %	Other	Other %	Latino	Latino %	Asian	Asian %	Black	Black %
9,933	-41	-0.4%	7,207	72.6%	2,057	20.7%	572	5.8%	97	1.0%
Total CVAP	Other CVAP	Other CVAP %	Latino CVAP	Latino CVAP %	Asian CVAP	Asian CVAP %	Black CVAP	Black CVAP %		
7,127	5,867	82.3%	863	12.1%	264	3.7%	133	1.9%		

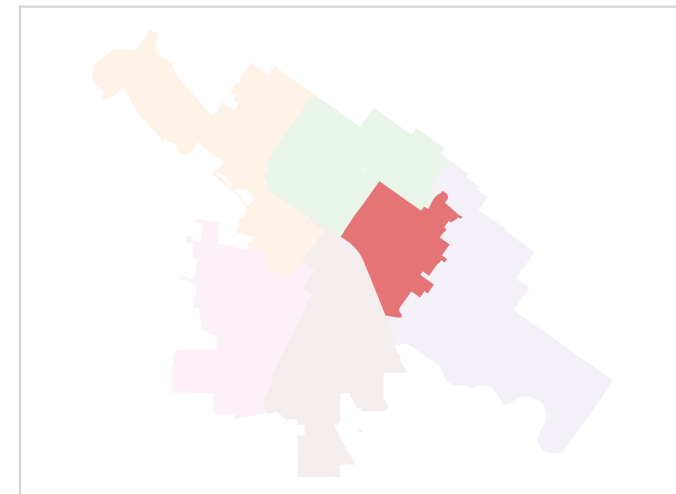
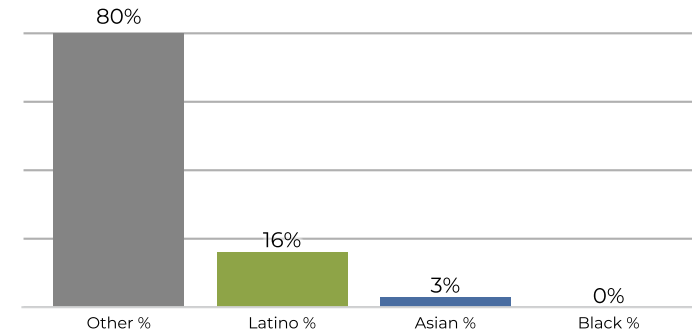
District C



2020 Census

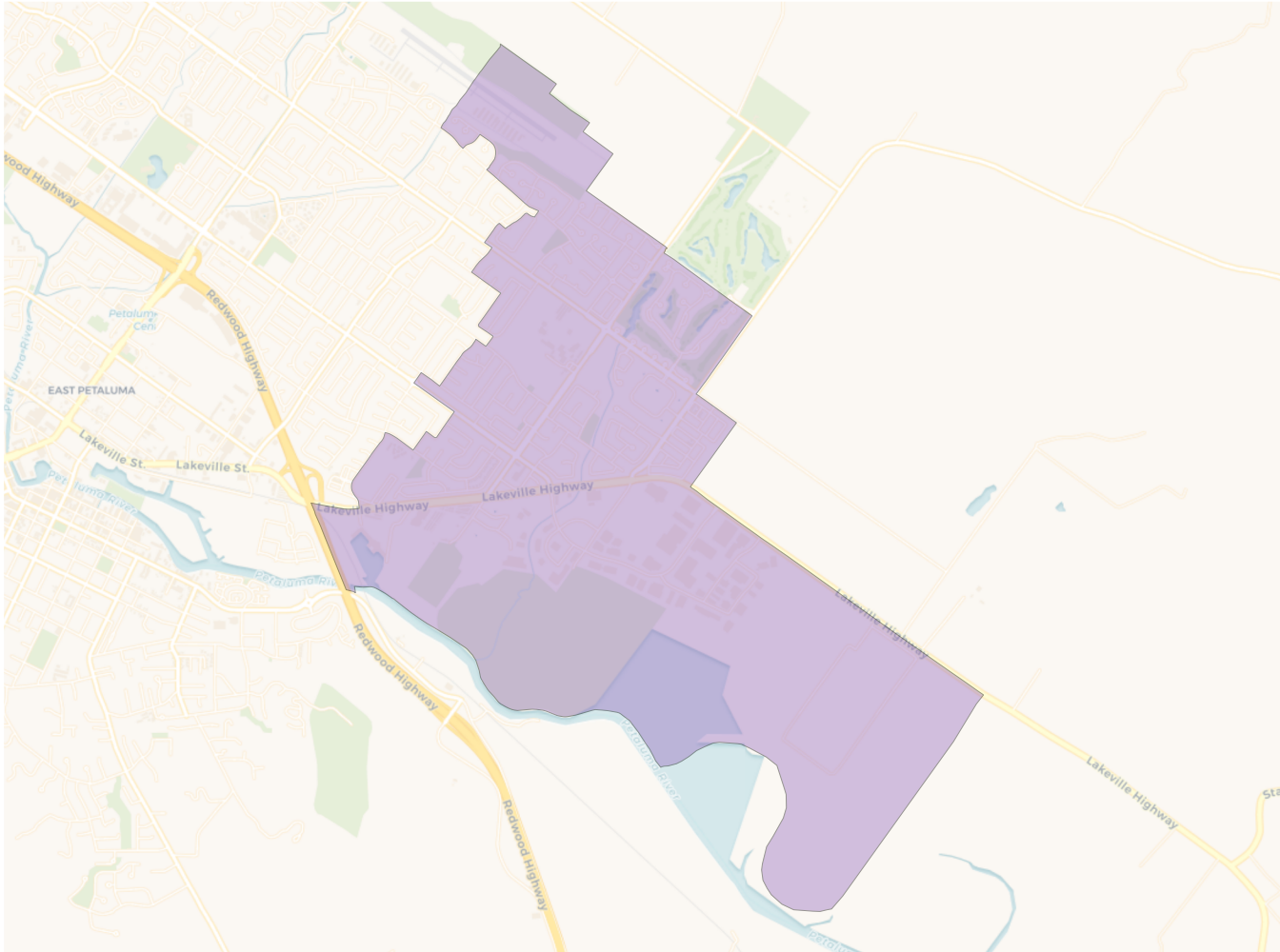


Citizen Voting Age Population

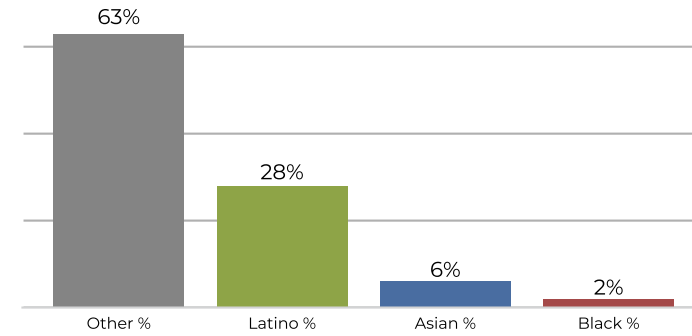


Population	Deviation	Deviation %	Other	Other %	Latino	Latino %	Asian	Asian %	Black	Black %
9,980	6	0.1%	6,684	67.0%	2,733	27.4%	431	4.3%	132	1.3%
Total CVAP	Other CVAP	Other CVAP %	Latino CVAP	Latino CVAP %	Asian CVAP	Asian CVAP %	Black CVAP	Black CVAP %		
7,387	5,910	80.0%	1,181	16.0%	232	3.1%	64	0.9%		

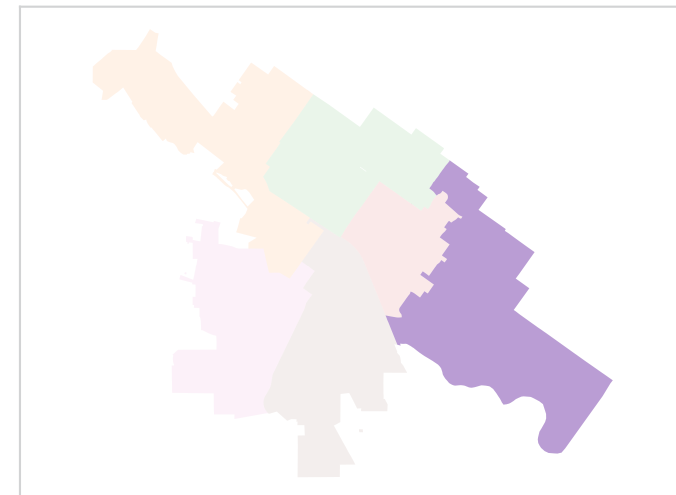
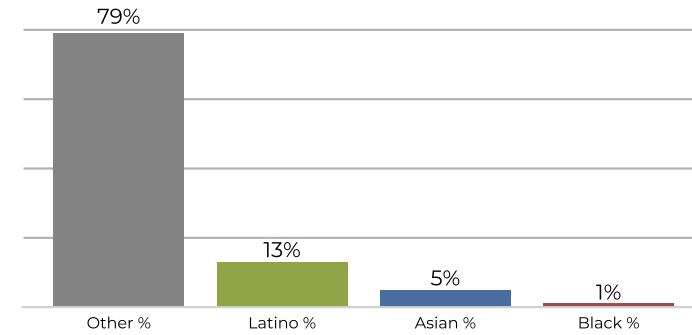
District D



2020 Census

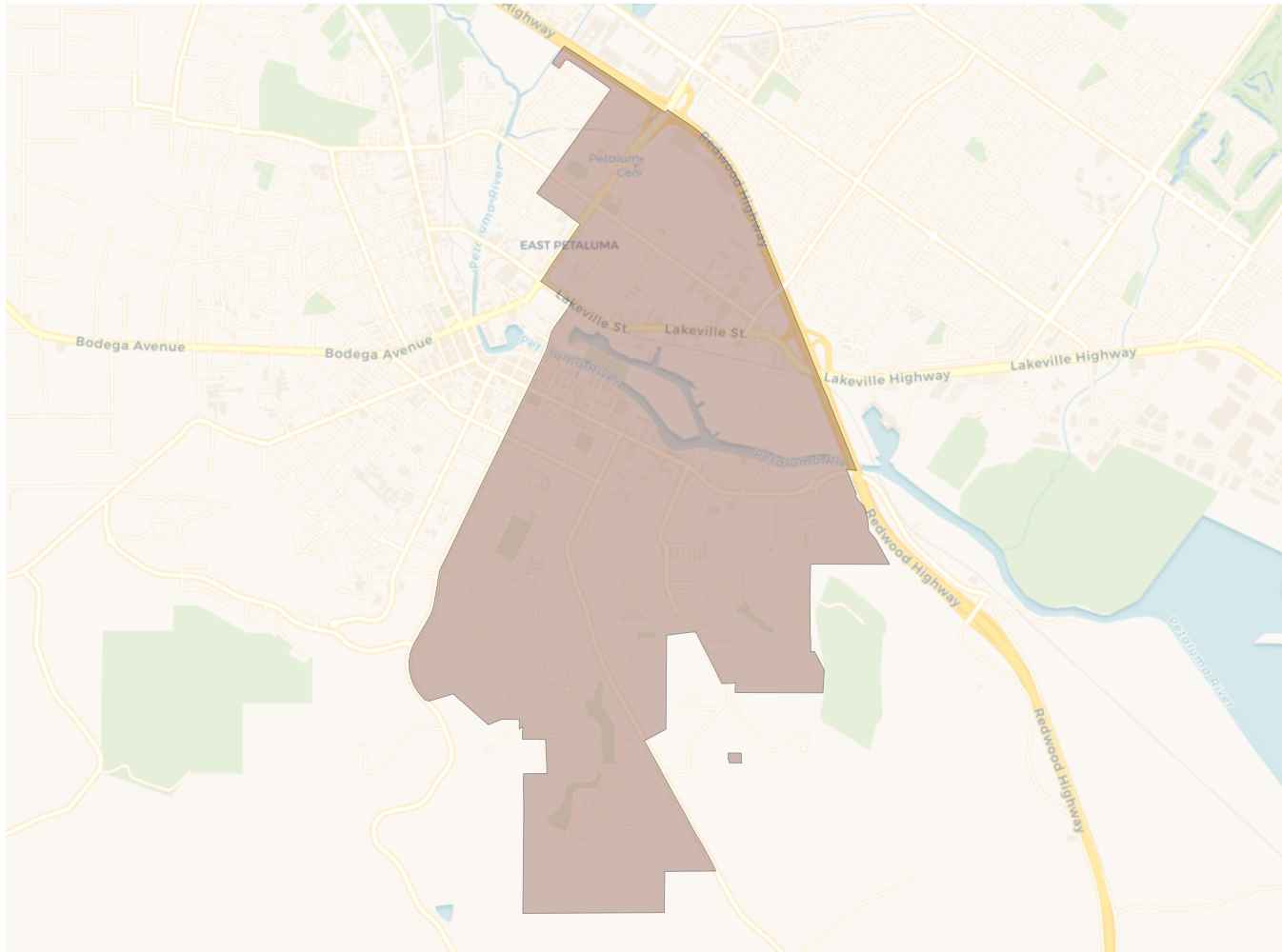


Citizen Voting Age Population

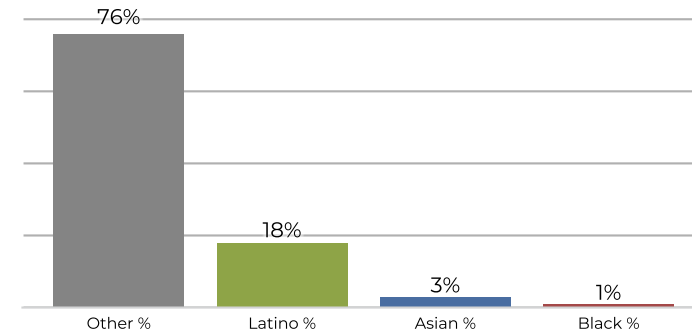


Population	Deviation	Deviation %	Other	Other %	Latino	Latino %	Asian	Asian %	Black	Black %
9,935	-39	-0.4%	6,311	63.5%	2,784	28.0%	620	6.2%	220	2.2%
Total CVAP	Other CVAP	Other CVAP %	Latino CVAP	Latino CVAP %	Asian CVAP	Asian CVAP %	Black CVAP	Black CVAP %		
6,802	5,410	79.5%	931	13.7%	372	5.5%	89	1.3%		

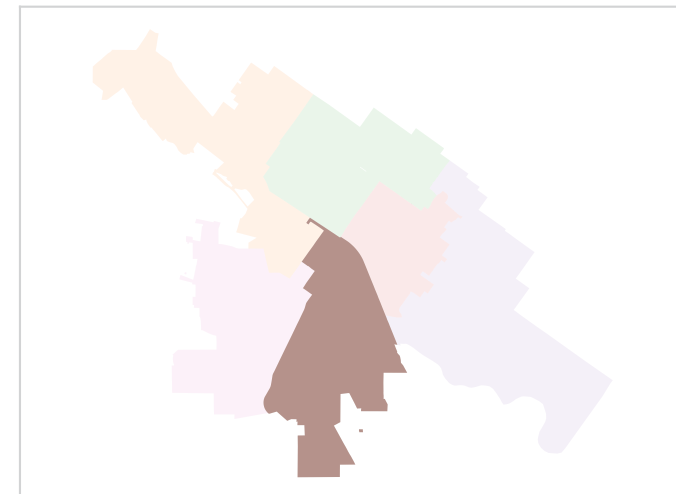
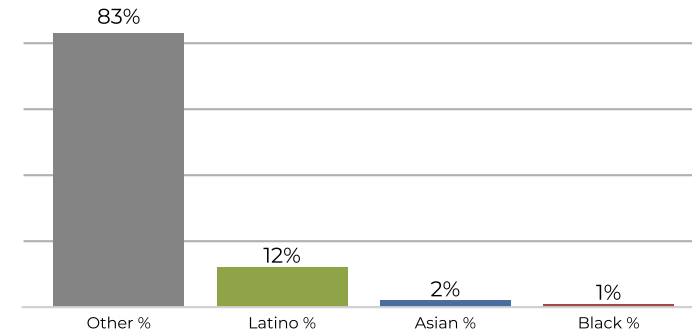
District E



2020 Census

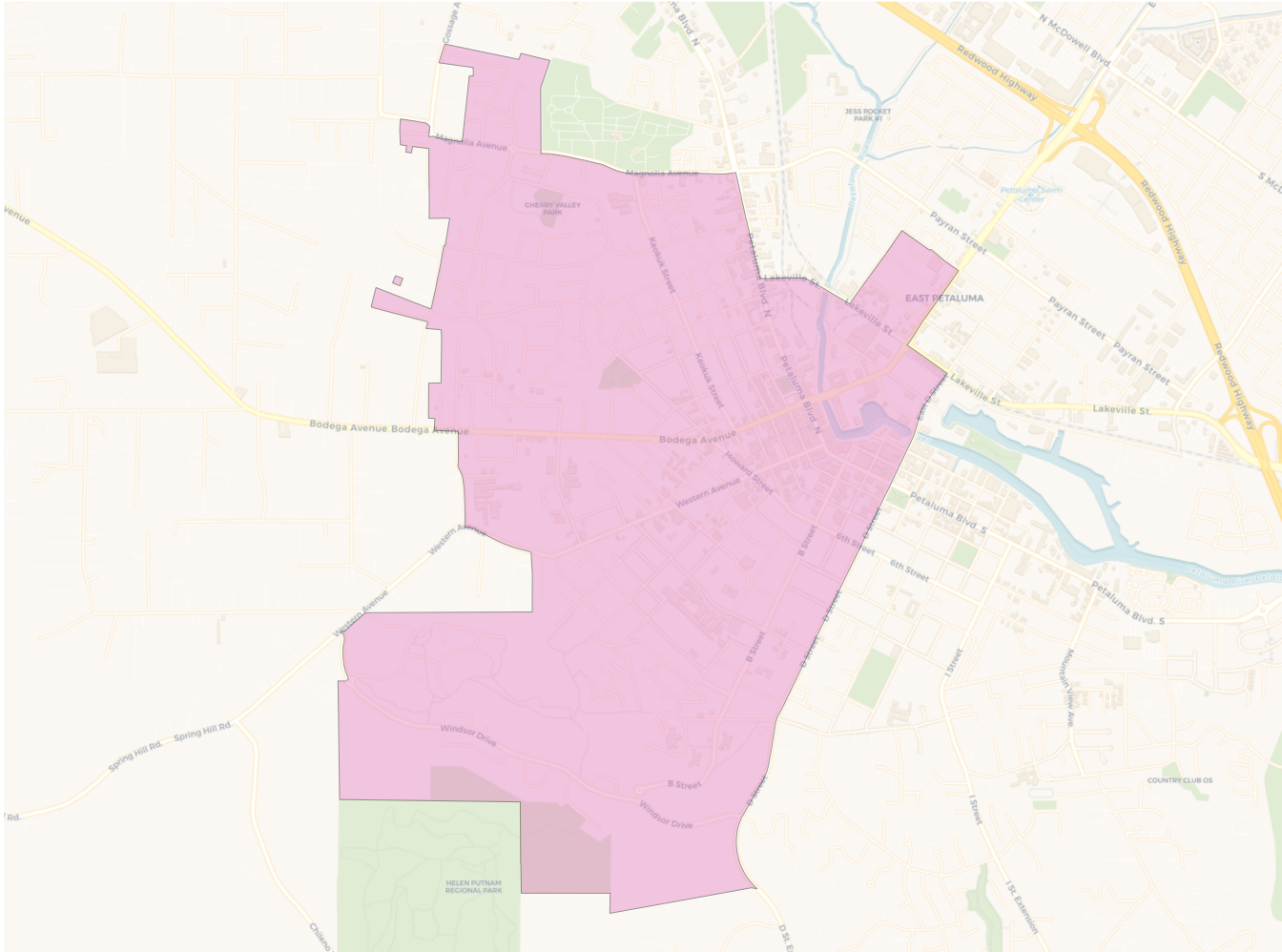


Citizen Voting Age Population

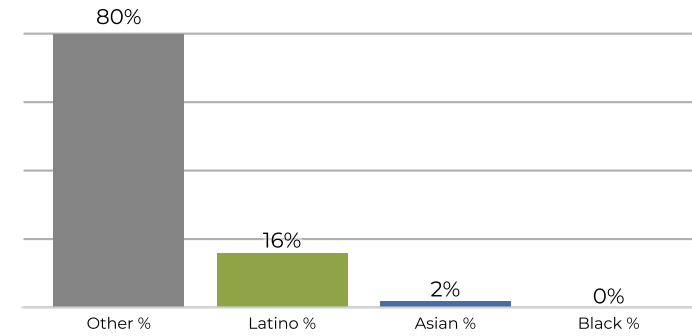


Population	Deviation	Deviation %	Other	Other %	Latino	Latino %	Asian	Asian %	Black	Black %
10,013	39	0.4%	7,697	76.9%	1,881	18.8%	325	3.2%	110	1.1%
Total CVAP	Other CVAP	Other CVAP %	Latino CVAP	Latino CVAP %	Asian CVAP	Asian CVAP %	Black CVAP	Black CVAP %		
7,259	6,077	83.7%	896	12.3%	182	2.5%	104	1.4%		

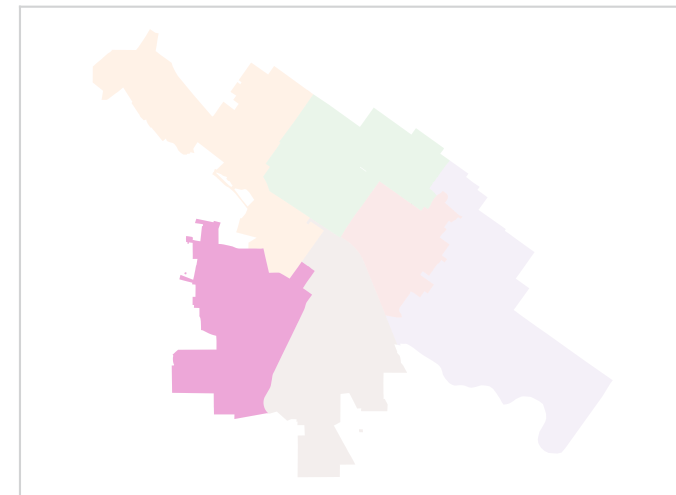
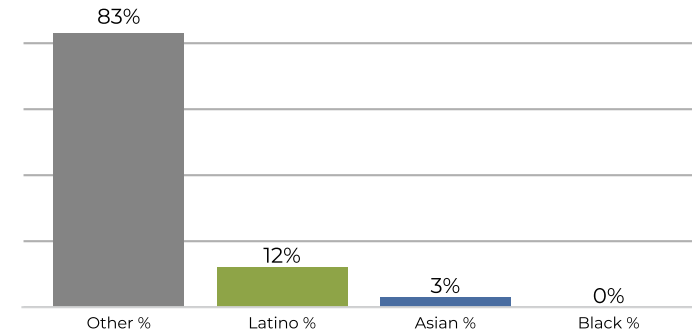
District F



2020 Census



Citizen Voting Age Population



Population	Deviation	Deviation %	Other	Other %	Latino	Latino %	Asian	Asian %	Black	Black %
9,955	-19	-0.2%	7,976	80.1%	1,632	16.4%	258	2.6%	89	0.9%
Total CVAP	Other CVAP	Other CVAP %	Latino CVAP	Latino CVAP %	Asian CVAP	Asian CVAP %	Black CVAP	Black CVAP %		
7,620	6,364	83.5%	963	12.6%	244	3.2%	49	0.6%		