

Existing Conditions 235 Liberty St



235 Liberty St Retaining Wall

Basalt Retaining Wall at 231 Liberty St



Basalt Retaining Wall at 230 Liberty St



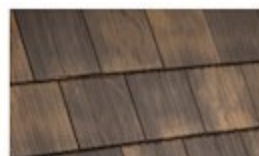
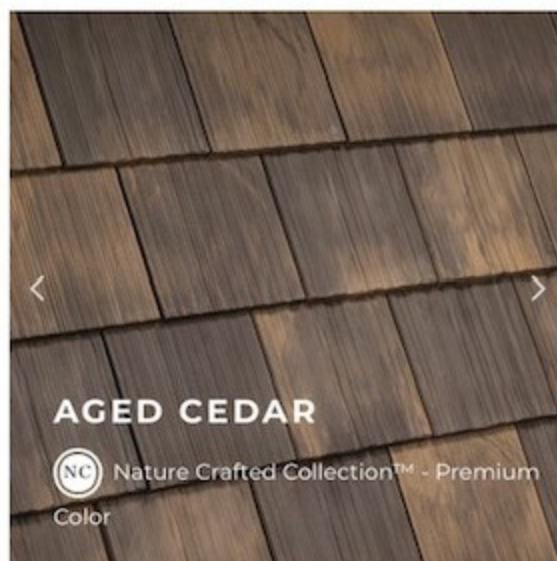
Basalt Sample for Use at Proposed 235 Liberty St Retaining Wall







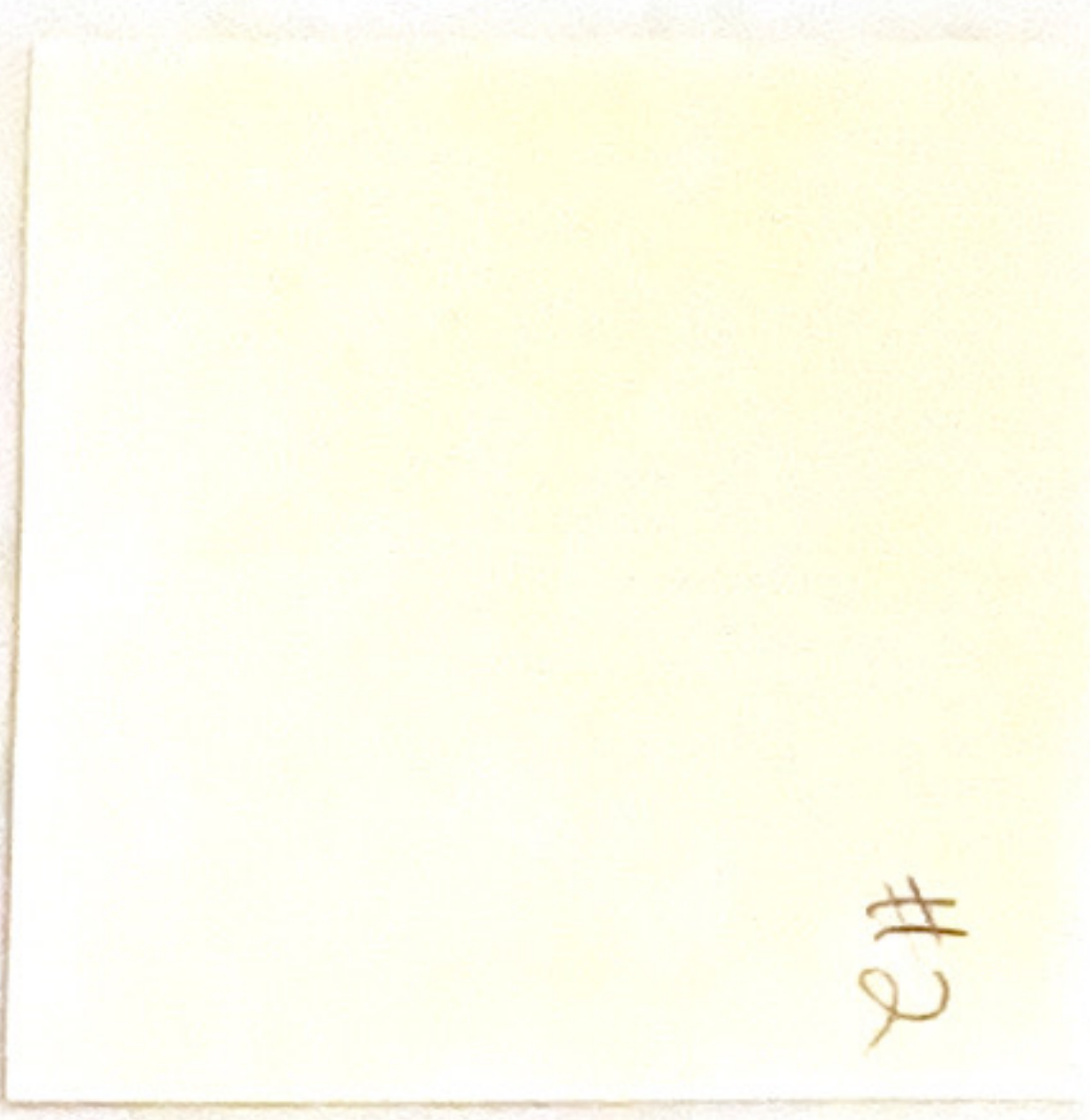
Single-width shakes deliver the varied textures and natural visual shifts in color and shading that occur with real, hand-split cedar.



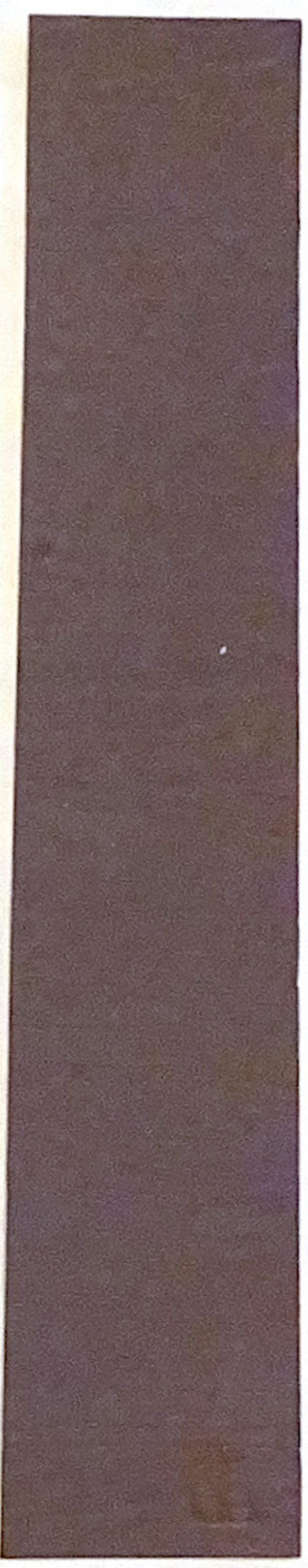
①



②



③



④



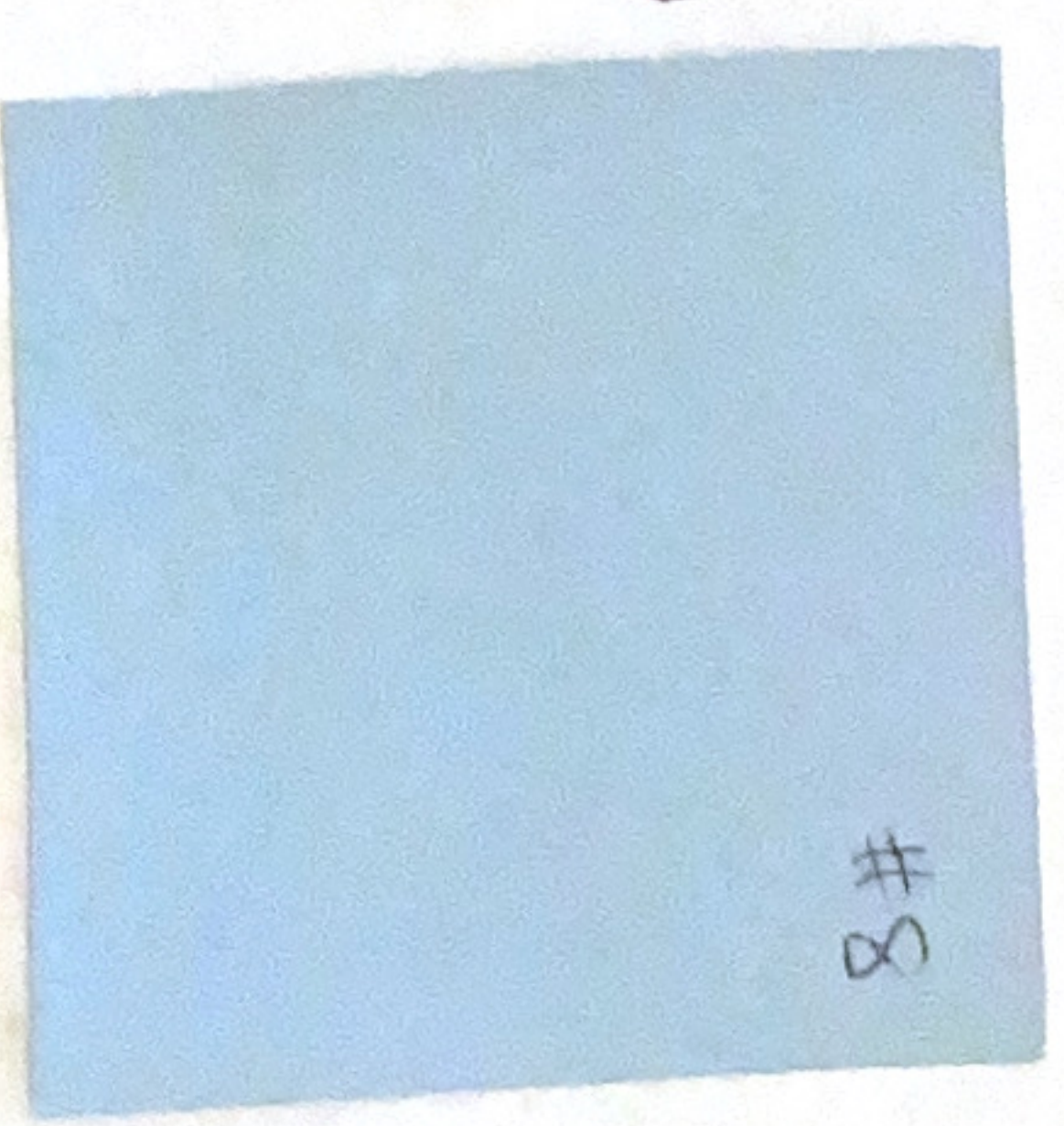
⑤



⑦



⑧



⑥ color swatch not available

July 7, 2017

Ryan & Shondra Eames
235-Liberty Street
Petaluma, CA 94952

JOB 11227 235-Liberty Street, Petaluma, CA

Color Specification

Color # 1 **HC-165**
A custom Benjamin-Moore color (Boothbay Gray) in N401 Regal Select low lustre acrylic exterior finish.

Placement

Main body....Cornice soffits....Garage door stiles and rails

Color # 2 **NAVAJO WHITE**
BM Int/Ext RM. A standard Benjamin-Moore exterior color. Make custom in N403 Regal Select soft gloss acrylic latex exterior finish.

Placement

Window and door casings, and sills....Bellybands....Columns....Pilasters....
Balustrade assembly....Corner boards....Bellybands....Gutters....

Color # 3 **AUBERGINE**
Have Benjamin-Moore make up in Regal Select Low Lustre acrylic exterior finish.
Special Bob Buckter color, Gallon Formula, N401-4X Base: W1-3X20, M1-3X20, B1-4X.25, R3-2X22, R1-2. ABSOLUTELY NO SUBSTITUTES ALLOWED.

Placement

Panel moulding....Frieze borders....Rosette outer borders

Color # 4 **HC 154**
A custom Benjamin-Moore color (Hale Navy) in N401 Regal Select low lustre acrylic exterior finish.

Placement

Panels....Friezes....Rosette inner borders

Color # 5 **OXFORD GRAY**
BM2128-40, a custom Benjamin Moore color in N401 Regal Select low lustre exterior finishj.

Placement

Panel backgrounding Bottom color Door stiles and rails Garage door panels

Color # 6 **DECK GRAY**
B-M #122-71, a standard Benjamin-Moore epoxy-reinforced latex porch and floor enamel.

Placement

Decks, Stairs, and Landings...**COLOR SWATCH NOT AVAILABLE**

Color # 7 **GL 22 KARAT PATENT GOLD LEAF**

Obtainable at Flax Art in SF, or look up a major art supply store in your area in the phone book and call them to see if they have it to sell. Alternate Source, usually substantially lower prices: SINOPIA, 321-7th St., SF Flor large orders and better discount: lagold.com

Application: 1. Varnish subject area or use a recommended "size"

2. Rag off to 90% dry (barely tacky) or let dry on its own.

3. Lay Gold onto the sticky surface. May have to lightly brush off excess gold.

4. Never varnish, shellac, or seal over gold. Gold should last 20+ years. Trim around gold with appropriate paint color.

ABSOLUTELY NO SUBSTITUTES SHALL BE ALLOWED, OR SUFFER MY WRATH!

Placement

Specified rosette tips....

Color # 8 **HC 153**

A custom Benjamin-Moore color (Marlboro Blue) in N401 Regal Select low lustre acrylic exterior finish.

Placement

Porch ceiling

General Recommendations

Make sure paint matches enclosed samples, prior to leaving store because listed formulas may not be accurate.

If the color base has changed, the supplier must exactly match to customer sample in like sheen and finish. Put a dot of the new "match" on my swatch. If it disappears after dry, it is an exact match. Otherwise send it back.

Test colors on building in designated areas for owner approval.

Numbered photos are 1 of a kind documents. Copy them in color at Kinko's, four to a page. Give these copies to painters.

Cut color swatches in half. Keep half, give half of each to painter

235 Liberty Front Yard Landscape Details

Drought Tolerant Plantings

Botanical Name	Common Name	Plant Size	Spacing
Pittosporum Tenuifolium	Pittosporum 'Silver Sheen'	12-16 foot tall 6-8 feet wide	3 feet
Salvia Leucantha	'Mexican Bush Sage'	4 foot tall and wide	4-6 feet
Cenchrus Setaceus	'Crimson Fountain Grass'	3-5 foot tall 2-4 foot wide	3-4 feet
Iberis Sempervirens	'Candytuft'	8 inches tall 12 inches wide	10-12 inches
Phlox Stolonifera	'Creeping Phlox'	4-6 inches tall 2 foot wide	2 feet
Aubrieta Deltoidea	'Rock Cress'	4-9 inches tall 1-2 foot wide	6 inches
Achillea Millefolium	'White Yarrow'	2-3 foot tall 1-2 foot wide	1-2 feet
Penstemon Pinifolius	'Pine Needle Beardtongue'	10-12 inches tall 12-18 inches wide	18 inches
Hylotelephium Telephium	'Herbstfeude Autumn Joy'	1.5-2 foot tall and wide	15 inches
Salvia Nemorosa	'May Night Salvia'	1.5-2 foot tall 1-1.5 foot wide	18 inches
Echinacea Pupurea	'Purple Coneflower'	2-5 foot tall 2 foot wide	1.5-3 feet
Thymus Praecox	'Creeping Thyme'	3 inches tall (ground cover)	8-12 inches
Erigeron Karvinskianus	'Mexican Daisy'	1-2 feet tall 3-5 feet wide	5 feet

Pittosporum Tenuifolium 'Silver Sheen'



Salvia Leucantha 'Mexican Sage'



Iberis Sempervirens 'Candy Tuft'



Phlox Stolonifera 'Creeping Phlox'



Aubrieta Deltoidea 'Rock Cress'



Achillea Millefolium 'White Yarrow'



Penstemon Pinifolius 'Pine Needle Beardtongue'



Hylotelephium Telephium 'Autumn Joy'



Salvia Nemorosa 'Maynight Salvia'



Echinacea Purpurea 'Purple Coneflower'



Thymus Praecox 'Creeping Thyme'



Cenchrus Setaceus 'Crimson Fountain Grass'



Erigeron Karvinskianus 'Mexican Daisy'



Oakhill-Brewster Historic District Houses with Garage Doors

226 Keokuk



243 Howard



300 Keokuk



300 Oak St



302 Prospect



304 Kentucky



308 Kentucky



312 Oak St



318 Keokuk



320 Walnut



323 Kentucky



331 Kentucky



333 Kentucky



343 Keller



407 Walnut



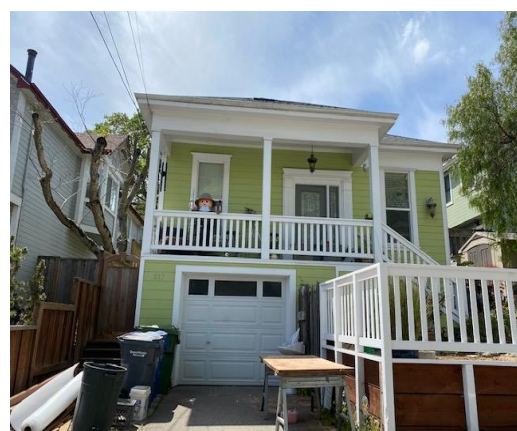
419 Liberty St



510 Kent



517 Kentucky



618 Kent



620 Prospect



624 Prospect

