



# OAK HILL MUNICIPAL WELL

## INITIAL STUDY (IS)/ MITIGATED NEGATIVE DECLARATION (MND) & PROJECT APPROVAL

Daniel Herrera, PE, *Deputy Director of Operations*  
Brian Bacciarini, *Senior Environmental Scientist* (GHD)

City Council Meeting  
June 20, 2022

# Well Construction Program

## Sonoma Water Local Production Goal:

- Deliver 40% of the average day demand (ADD) of the maximum month
  - This would be 4.6 MGD (3,200 GPM)
- Summary of the City's Wells
  - 10 active wells produce 3 MGD (2,200 GPM)
    - This is only 27-28% of the ADD of the maximum month
  - Some are summer production, some are emergency only
  - Existing wells are all east of the Petaluma River and Highway 101

**MGD = Million Gallons per Day**

**GPM = Gallons per Minute**

# Petaluma Well Program

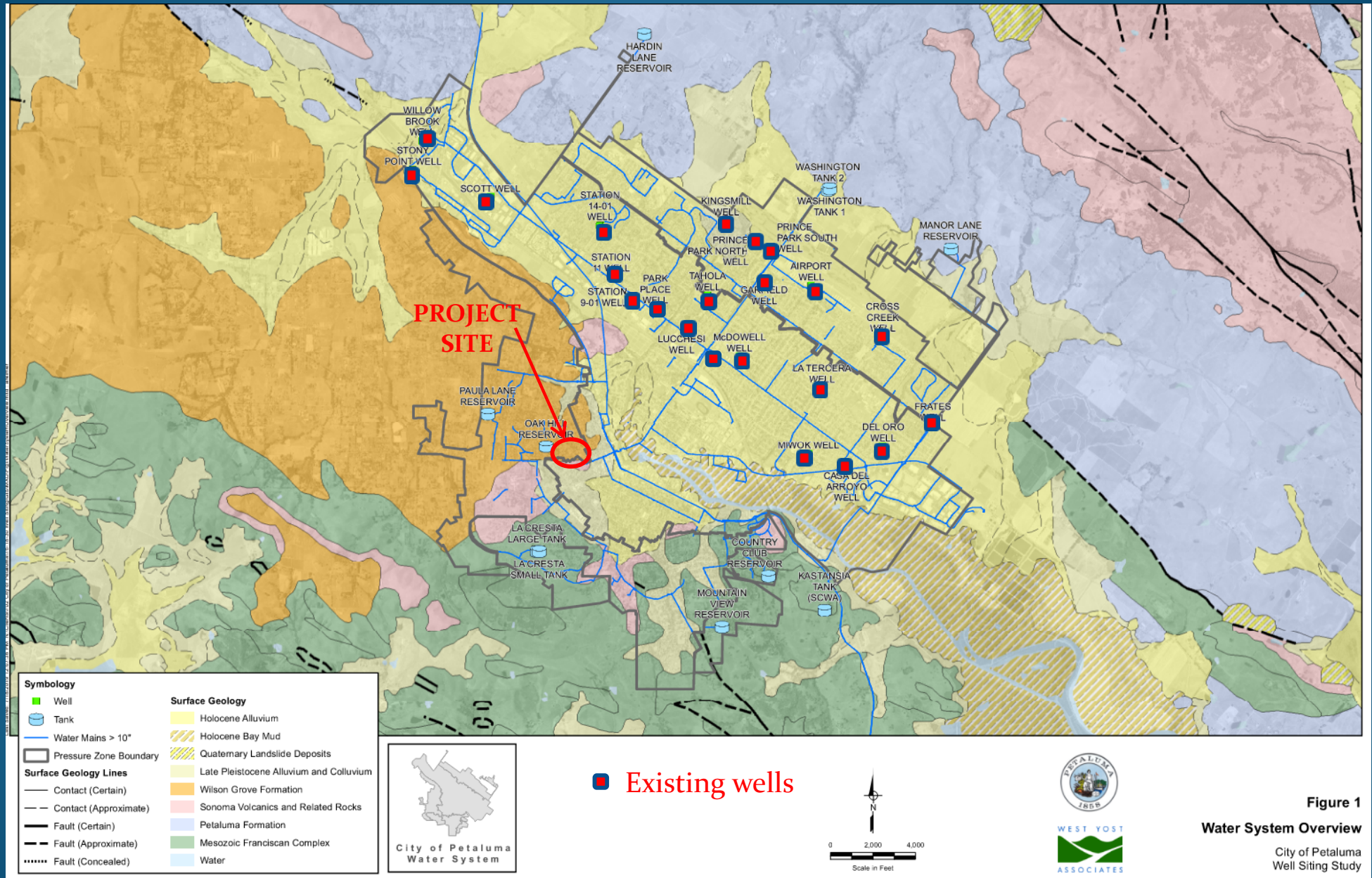


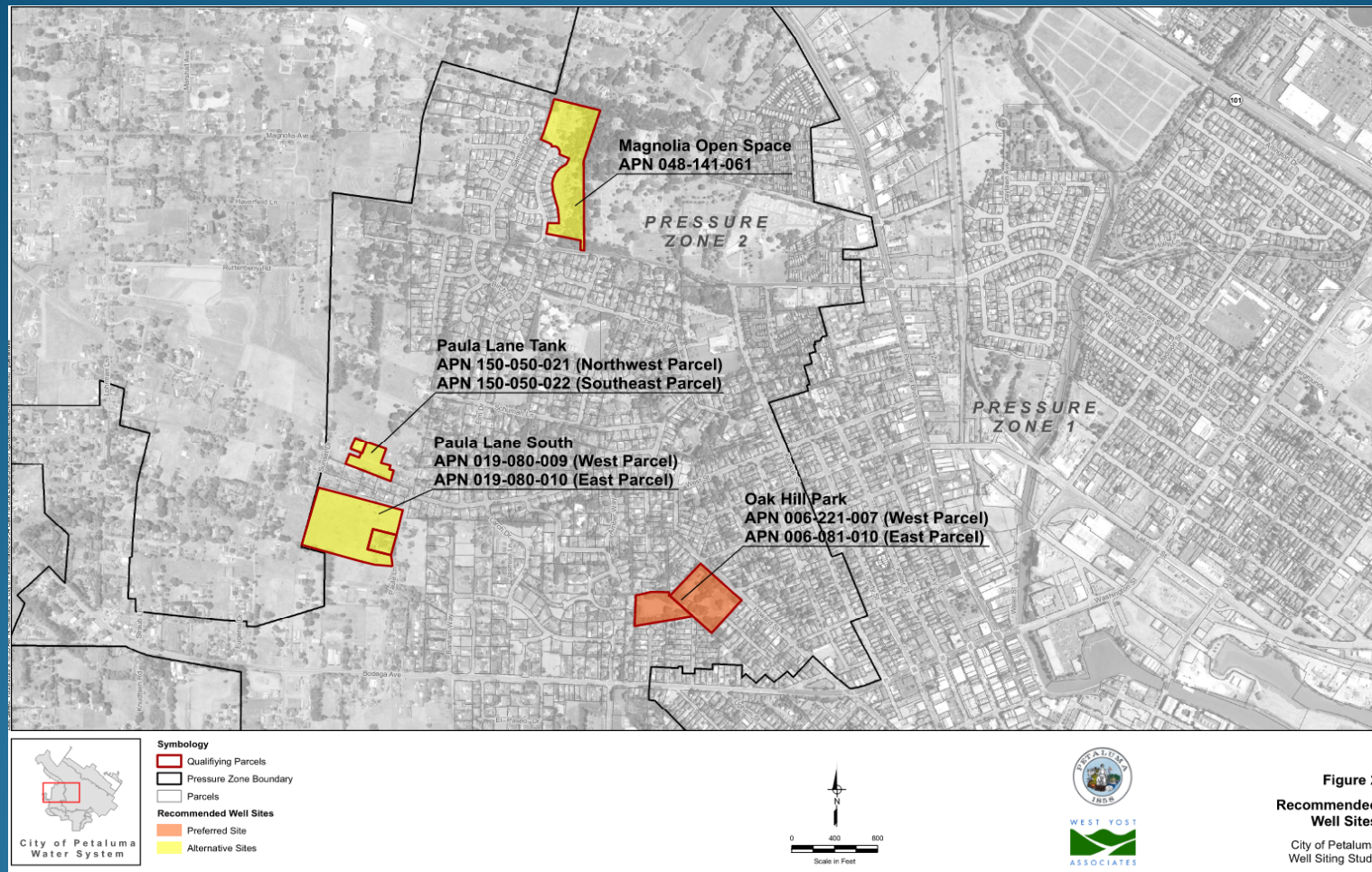
Figure 1

Water System Overview

City of Petaluma  
Well Siting Study



# Oak Hill Municipal Well – Well Siting Study



**Figure 2**  
**Recommended**  
**Well Sites**  
City of Petaluma  
Well Siting Study

- City Owned Properties
- Proximity to Public Utilities (Water, Sewer, Electric)
- Proximity to Productive Aquifer
- Location within City's Water Distribution System
- Distance from Contamination
- Site Constructability



# Oak Hill Municipal Well Site



# California Environmental Quality Act (CEQA) Review

- Informs decision makers and public about potential environmental effects
- Identifies ways environmental effects can be avoided or reduced
- Discloses an agency's decision-making process



# CEQA Initial Study

- Facilitates environmental review early in design of project
- Enables mitigating adverse impacts
- Provides basis for deciding whether to prepare:
  - **Negative Declaration (ND)** if impacts are considered less than significant with no mitigation needed, **OR**
  - **Mitigated Negative Declaration (MND)** if impacts can be reduced to less than significant with mitigation, **OR**
  - **Environmental Impact Report (EIR)** if significant unavoidable impacts may result





# CEQA Guidelines

## Environmental Checklist

21 Environmental Topics Evaluated		
Aesthetics	Agriculture and Forest Resources	Air Quality (including Odors)
Biological Resources	Cultural Resources	Energy
Geology / Soils	Greenhouse Gas Emissions	Hazards & Hazardous Materials
Hydrology / Water Quality	Land Use / Planning	Mineral Resources
Noise	Population / Housing	Public Services
Recreation	Transportation	Tribal Cultural Resources
Utilities / Service Systems	Wildfire	Mandatory Findings of Significance



# CEQA Noticing and Public Review

- AB 52 Tribal Notifications
- Notice of Intent to Adopt Mitigated Negative Declaration
  - Posted with County Clerk
  - Published in Petaluma Argus-Courier
  - Mailed to local agencies and Tribes
- Notices and CEQA Document submitted to State Clearinghouse
- Initial Study / Mitigated Negative Declaration
  - Posted on City website
  - Hardcopy available at Public Works counter
  - Submitted to State Clearinghouse
- Public Comment Period
  - 30 days from April 28 to May 27, 2022



# Reviewing Agencies

22 State and Local Reviewing Agencies		
CA Air Resources Board	CA Energy Commission	Office of Historic Preservation
CA Dept. of Conservation	CA Native American Heritage Commission	State Water Resources Control Board
CA Dept. of Fish & Wildlife	CA Natural Resources Agency	CA Highway Patrol
CA Dept. of Forestry & Fire Protection	CA Public Utilities Commission	Sonoma Water
CA Dept. of Parks and Recreation	CA Regional Water Quality Control Board	Sonoma County Permit & Resource Management Dept.
CA Dept. of Transportation	CA State Lands Commission	Bay Area Air Quality Management District
CA Dept. of Water Resources	Dept. of Toxic Substances Control	Lytton Rancheria / Federated Indians of Graton Rancheria

# Public Comments



- No agency comments received
- Public comments from residents received prior to tonight's meeting

## Primary areas of concern:

- CEQA noticing?
- Why not EIR?
- Surface water and drainage impacts from project?
- Water table impacts and ground subsidence/settlement?
- Water quality and testing process?
- Community meeting?



# CEQA Review Summary



- Project evaluated in accordance with CEQA guidelines
- Potential impacts can be mitigated to a less-than-significant level
- No significant unavoidable impacts identified
- Analysis supports MND
- Mitigation Monitoring and Reporting Program (MMRP) developed to ensure compliance with mitigation measures identified in Initial Study

# Findings and Recommendations

This project improves our community's water supply resiliency during periods of drought and enhances our fire protection capabilities.

## **Finding:**

- With incorporation of recommended mitigation measures, the project would not cause significant environmental effects.

## **Recommendation:**

- Staff recommends the Mitigated Negative Declaration be adopted, the Mitigation Monitoring and Reporting Program be adopted, the Project be approved, and a Notice of Determination be filed for the project.

NOTE: In acknowledgment of public comments submitted expressing various concerns, staff will be reaching out to residents to discuss their concerns. Council may consider the option of extending the public comment period to allow for additional outreach and input.



Thank you!

Comments and questions?

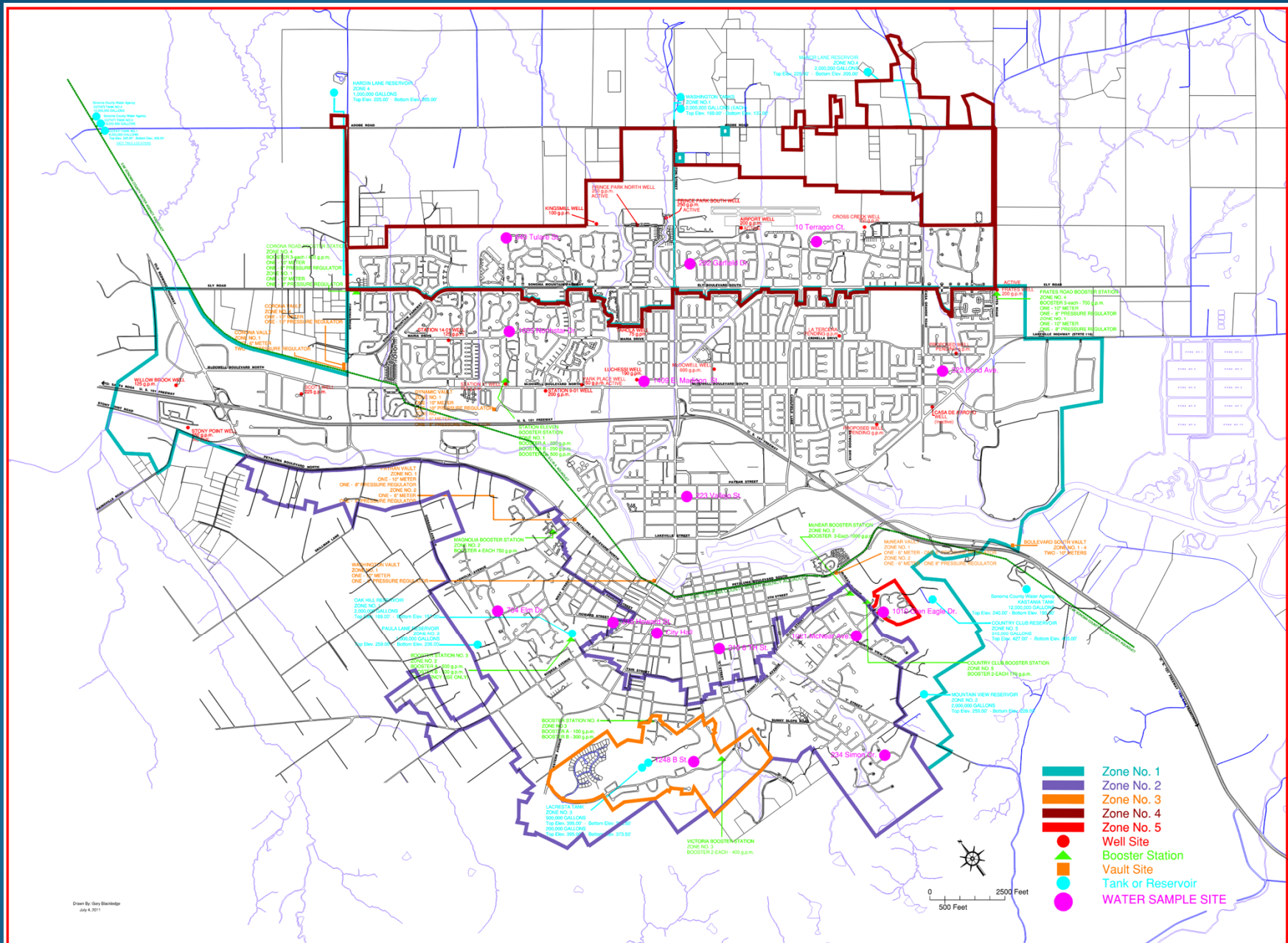






SPARE SLIDES IF NEEDED

# Water Distribution System



# Topics Raised



- Level of CEQA Noticing
  - *Noticing was compliant with State & Local requirements*
- Effects on groundwater levels & land surface subsidence
  - *Project evaluated against sustainable management criteria outlined in the Petaluma Valley Groundwater Sustainability Plan and determined to not have a significant effect*
  - *Well will be 500 feet deep and draw groundwater from fracture zones in deep Sonoma Volcanic Formation, a deep groundwater source isolated from overlying aquifers*
  - *General Plan Policy 8-P-21 requires a 100-foot sanitary seal on new municipal water supply wells that will further isolate and prevent pumping from overlying shallow aquifer*
  - *Modeling in Groundwater Sustainability plan accounts for City pumping and indicates no effect on beneficial uses of groundwater basin*
  - *Water production from hard rock would not yield land subsidence and project determined to not have a significant effect*



# Topics Raised (continued)

- Effect of project on storm water runoff
  - *Minor runoff from impervious surfaces will percolate into contiguous pervious grasslands on City-owned property*
- Effect of discharges during testing and maintenance
  - *Well would be required to meet Title 22 drinking water standards*
  - *Groundwater generated during testing and maintenance would be discharged to the local sanitary sewer, or could possibly be used for non-potable uses.*

