

Work will begin on the repairs to the fenders, 7 am to 5 pm, October 3, 2022 through October 31, 2022. The 150' x 60' derrick barge "DB Hagar" and the 135' x 50' Manson 47 barge will be on-scene just southwest at the end of the swing span during the work day.

The swing span of the bridge will be secured in the closed-to-navigation during the workday, except for one-hour Monday through Friday, from 11:30 am to 12:30 pm, and Saturday and Sunday, 10 am to 11 am and 4 pm to 5 pm, when the bridge will open on signal for the passage of all vessels (Work may or may not take place on Saturday and Sunday). Commercial vessels can request an opening of the span at any time if at least 30-minutes notice is given to the Westar tug on VHF-FM Ch 16, 13, 14 or 88.

After the work day, the barges will remain on-scene and the swing span of the bridge will remain in the open-to-navigation position. The northeast channel will be open for vessels to pass. The exposed corners of the barges will be lighted at night with steady burning red lights (see attached barge location and lighting).

For conditions at the project site, contact 510-774-8396 or 510-648-5766 or 707-890-8650.

For further information contact the Coast Guard Bridge Office at 510-437-3516.

Any further information concerning this project will be provided through the Local Notice to Mariners.

v/r,

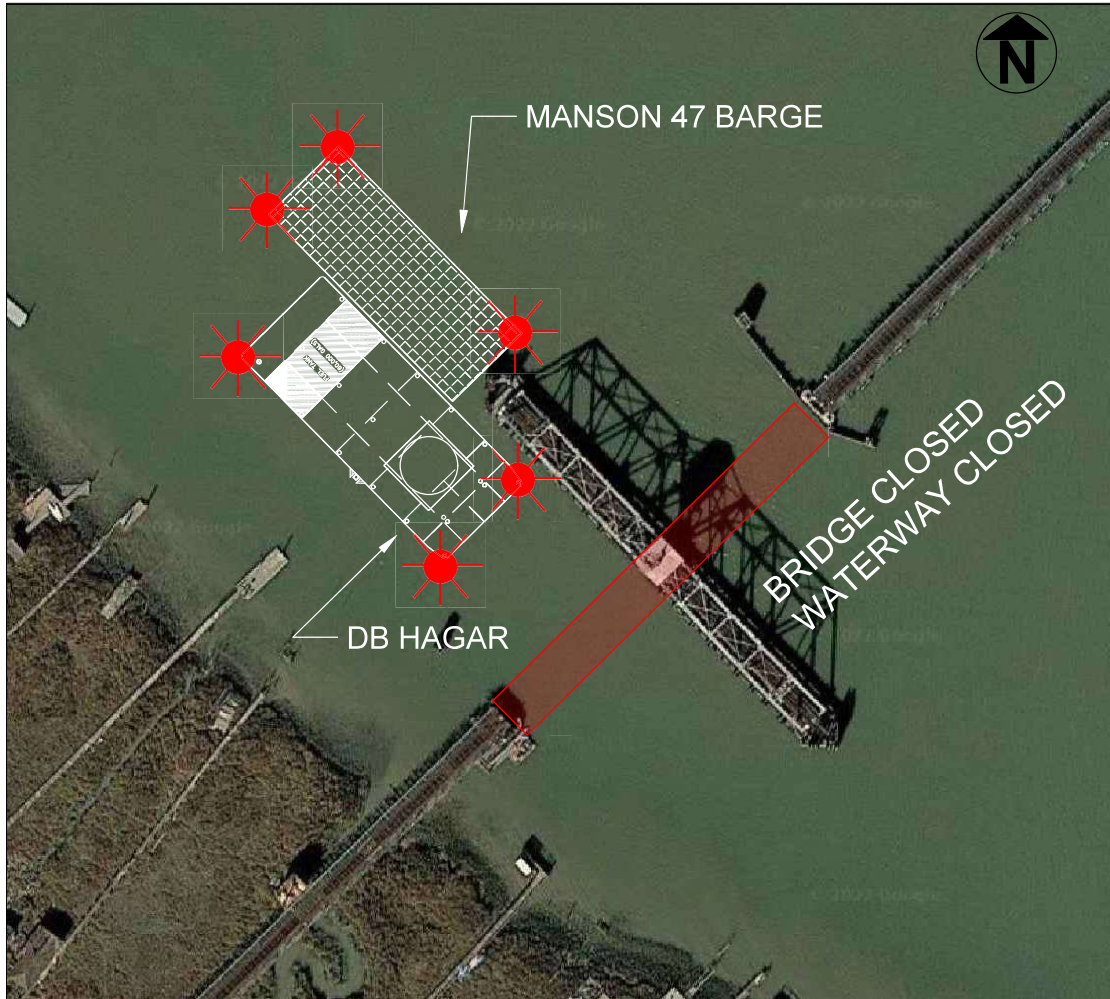
Carl Hausner  
Chief, Bridge Section  
Eleventh Coast Guard District  
510-437-3516 Office  
510-219-4366 Cell  
510-437-5836 Fax  
Carl.T.Hausner@uscg.mil

Mailing Address

Commander (dpw)  
Eleventh Coast Guard District  
Coast Guard Island, BLDG 50-2  
Alameda, CA 94501-5100

Attn: Bridge Office

Guardians of the Pacific Southwest  
#People #Mission #Partnerships  
<https://www.pacificarea.uscg.mil/Our-Organization/District-11/>



Fender Repairs  
SMART Blackpoint Bridge  
Mile 0.8  
Petaluma River

**Workday Barge Location:** During the workday the barge will be spudded down in the location above.



Fender Repairs  
SMART Blackpoint Bridge  
Mile 0.8  
Petaluma River

**After Hours Barge Location:** After the workday the barge will be spudded down in the location above. The swing span of the bridge will remain in the open to navigation position. The corners of the barges will be lighted at night with fixed red lights, visible at 2,000 yards from approaching vessels