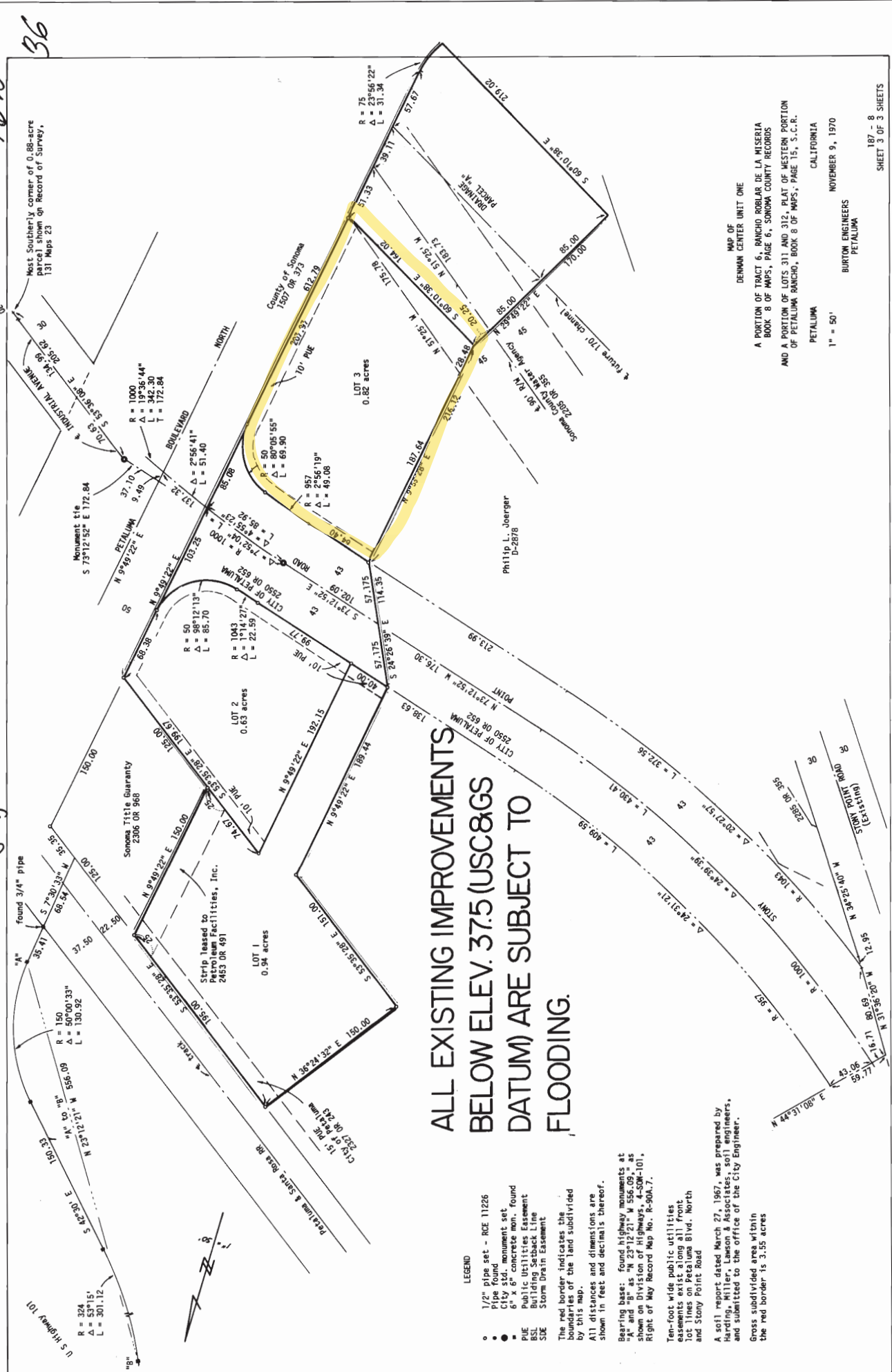


162
36

5011
CASE



**ALL EXISTING IMPROVEMENTS
BELOW ELEV. 37.5 (USC&G
DATUM) ARE SUBJECT TO
FLOODING.**

LEGEND

- 1/2" pipe set - RCE 11226
 - Pipe found
 - City std. monument set
 - 6" x 6" concrete mon. found
 - PUE Public Utilities Easement
 - BSL Building Setback Line
 - SDE Storm Drain Easement
- The red border indicates the boundaries of the land subdivided by this map.
All distances and dimensions are shown in feet and decimals thereof.

Bearing base: found highway monuments at "A" and "B" as: "N 23°12'21" W 556.09', as shown on Survey Map No. 101-101, Right of Way Record Map No. R-904.7.

Ten-foot wide public utilities easements exist along all front lot lines on Petaluma Blvd. North and Stony Point Road

A 6511 report dated March 27, 1967, was prepared by Harding, Miller, Lawson & Associates, soil engineers, and submitted to the office of the City Engineer.

Gross subdivided area within the red border is 3.55 acres

MAP OF
DENHAM CENTER UNIT ONE
A PORTION OF TRACT 6, RANCHO ROBLAR DE LA MISERIA
BOOK 8 OF MAPS, PAGE 6, SONOMA COUNTY RECORDS
AND A PORTION OF LOTS 311 AND 312, PLAT OF WESTERN PORTION
OF PETALUMA RANCHO, BOOK 8 OF MAPS, PAGE 15, S.C.R.
PETALUMA CALIFORNIA
NOVEMBER 9, 1970
BURTON ENGINEERS
PETALUMA
1" = 50'
187 - 8
SHEET 3 OF 3 SHEETS