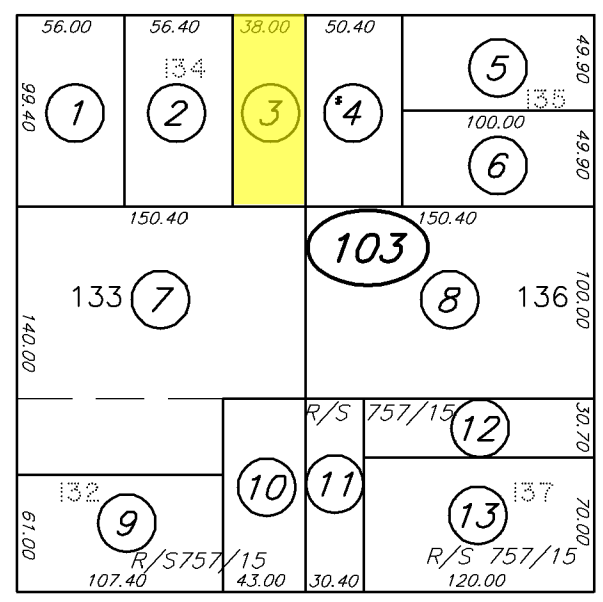
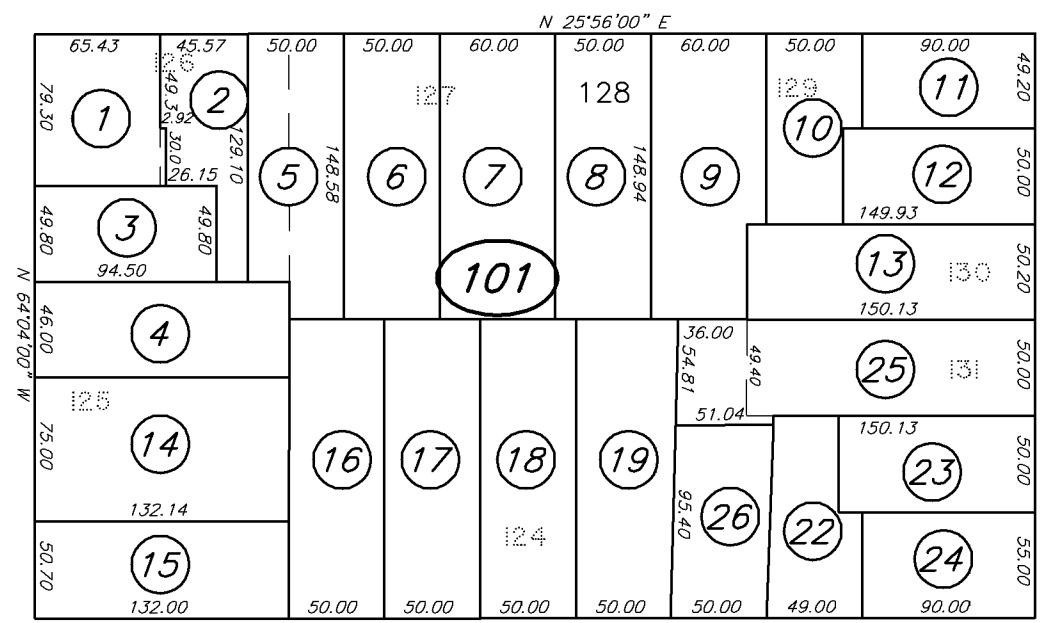
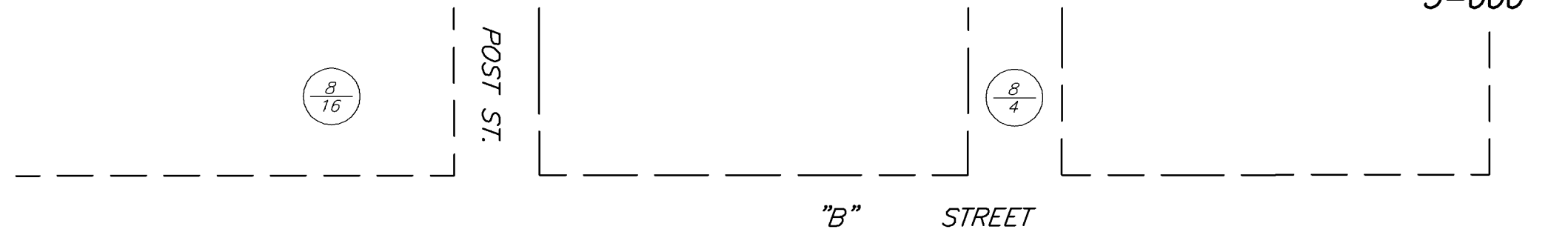
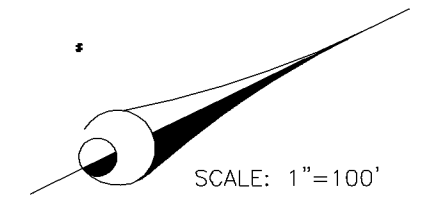


COUNTY ASSESSOR'S PARCEL MAP

TAX RATE AREA
3-000

008-10

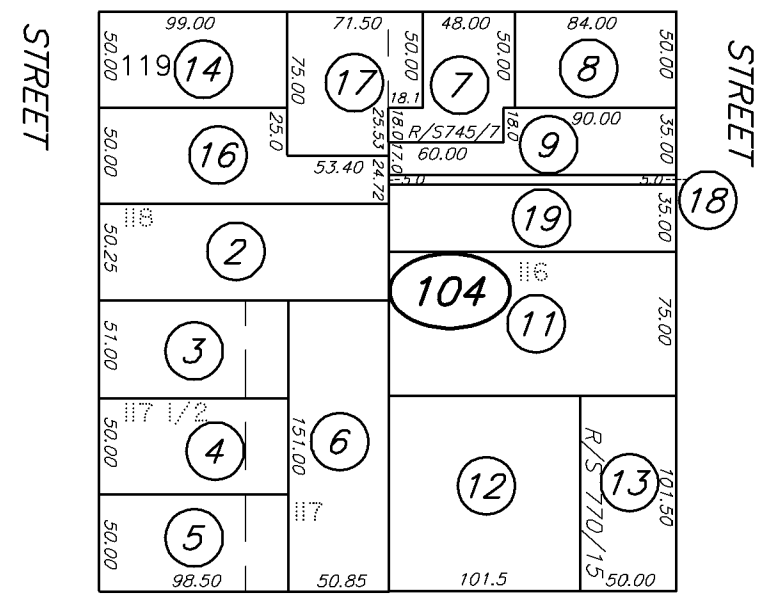
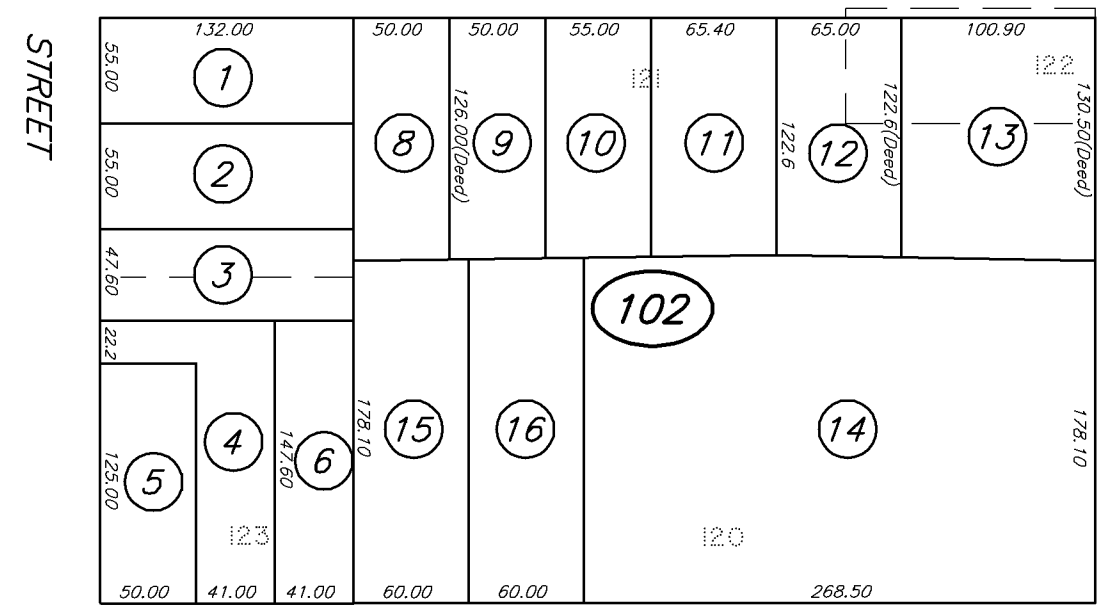


Ptn. STRATTON'S MAP
CITY OF PETALUMA
12-30-1865 FOLDER 9 PG. 1

8/17

"C" STREET

8/6



NOTE: This map was prepared for Assessment purposes only and does not indicate either parcel legality or a valid building site. No liability is assumed for the accuracy of the data delineated. The acreages are based on the information supplied to the Assessor (i.e. recorded survey maps, recorded deeds, prior assessment maps, etc.)

REVISED
09-01-93=26-KT
11-04-11=R/S-BC
05-08-14=R/S-BC
10-26-15=R/S-BC

NOTE: Assessor's parcels do not necessarily constitute legal lots. To verify legal parcel status, check with the appropriate city or county community development or planning division.

8/20

8/18

"D" STREET

Assessor's Map Bk. 008, Pg. 10
Sonoma County, Calif. (ACAD)

