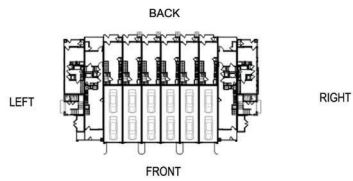
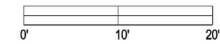




**CHARACTER ELEVATION -
BLDG. TYPE C (BACK)**

SCALE: 3 / 16" = 1'-0" (ON 30"x42" SHEET)



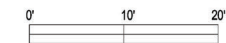
MATERIAL & COLOR

- 1. HORIZONTAL SIDING
- 2. BOARD AND BATTEN
- 3. ROOF SHINGLE
GAF TIMBERLINE
- 4. CORRUGATED METAL
COLOR: PEWTER GRAY
- 5. COMPOSITE WOOD RAILING
- 6. PAINTED TRIM
COLOR: SHERWIN WILLIAMS
TRICORN BLACK SW6258
- 7. PAINTED POST
SHERWIN WILLIAMS
TRICORN BLACK SW6258
- 8. VINYL WINDOW

- A. SHERWIN WILLIAMS
WHITE SNOW SW9541
- B. SHERWIN WILLIAMS
SUMMER WHITE SW7557
- C. SHERWIN WILLIAMS
BEACH HOUSE SW7518
- D. SHERWIN WILLIAMS
JUTE BROWN SW6096
- E. SHERWIN WILLIAMS
PERLE NOIR SW9154



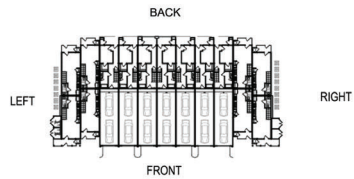
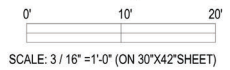
**CHARACTER ELEVATION -
BLDG. TYPE C (LEFT)**



SCALE: 3 / 16" = 1'-0" (ON 30"x42" SHEET)



CHARACTER ELEVATION -
BLDG. TYPE D (FRONT)

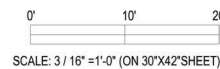


MATERIAL & COLOR

- | | |
|---|---|
| <p>1. HORIZONTAL SIDING</p> <p>2. BOARD AND BATTEN</p> <p>3. ROOF SHINGLE
GAF TIMBERLINE
COLOR: PEWTER GRAY</p> <p>4. CORRUGATED METAL
COLOR: GREY</p> <p>5. COMPOSITE WOOD RAILING</p> <p>6. PAINTED TRIM
COLOR: SHERWIN WILLIAMS
TRICORN BLACK SW6258</p> <p>7. PAINTED POST
SHERWIN WILLIAMS
TRICORN BLACK SW6258</p> <p>8. VINYL WINDOW</p> | <p>A. SHERWIN WILLIAMS
WHITE SNOW SW9541</p> <p>B. SHERWIN WILLIAMS
SUMMER WHITE SW7557</p> <p>C. SHERWIN WILLIAMS
BEACH HOUSE SW7518</p> <p>D. SHERWIN WILLIAMS
JUTE BROWN SW6096</p> <p>E. SHERWIN WILLIAMS
PERLE NOIR SW9154</p> |
|---|---|



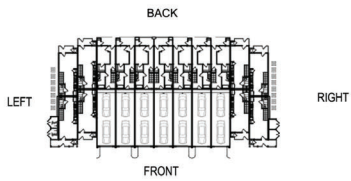
CHARACTER ELEVATION -
BLDG. TYPE D (LEFT)





CHARACTER ELEVATION -
BLDG. TYPE D (BACK)

SCALE: 3 / 16" = 1'-0" (ON 30"x42" SHEET)



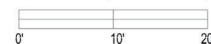
MATERIAL & COLOR

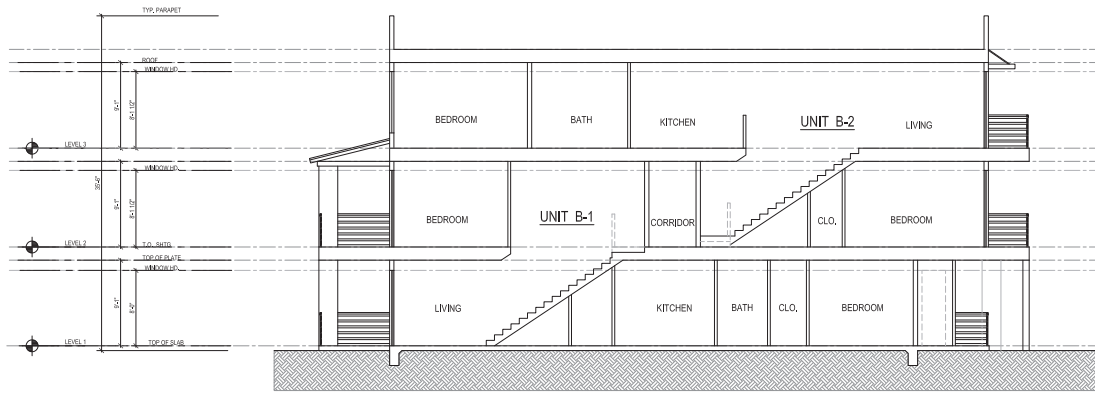
- | | |
|---|--|
| 1. HORIZONTAL SIDING | A. SHERWIN WILLIAMS
WHITE SNOW SW9541 |
| 2. BOARD AND BATTEN | B. SHERWIN WILLIAMS
SUMMER WHITE SW7557 |
| 3. ROOF SHINGLE | C. SHERWIN WILLIAMS
BEACH HOUSE SW7518 |
| 4. CORRUGATED METAL | D. SHERWIN WILLIAMS
JUTE BROWN SW6096 |
| 5. COMPOSITE WOOD RAILING | E. SHERWIN WILLIAMS
PERLE NOIR SW9154 |
| 6. PAINTED TRIM | |
| COLOR: SHERWIN WILLIAMS
TRICORN BLACK SW6258 | |
| 7. PAINTED POST | |
| SHERWIN WILLIAMS
TRICORN BLACK SW6258 | |
| 8. VINYL WINDOW | |



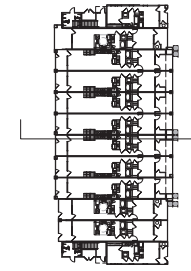
CHARACTER ELEVATION -
BLDG. TYPE D (RIGHT)

SCALE: 3 / 16" = 1'-0" (ON 30"x42" SHEET)

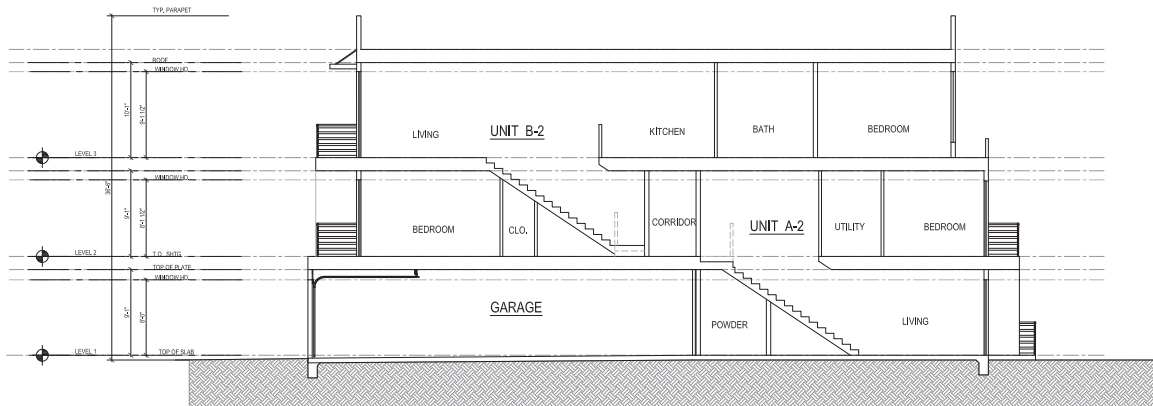




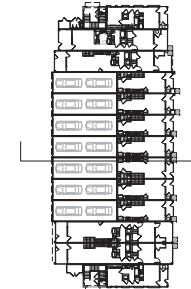
CONCEPTUAL SECTION - BLDG. TYPE-A



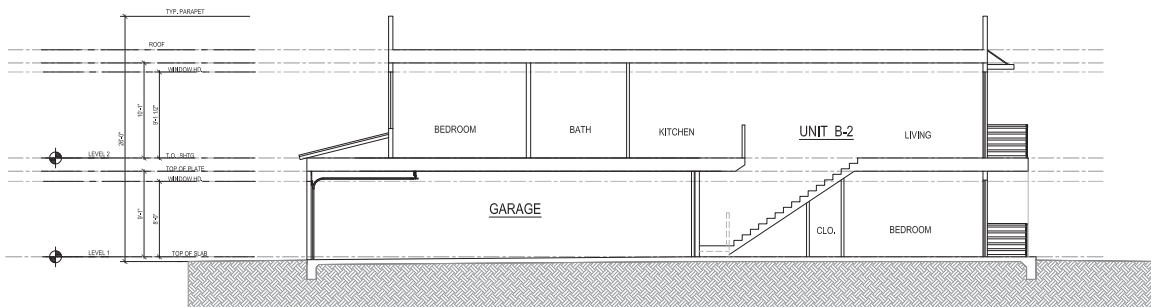
BLDG. TYPE-A



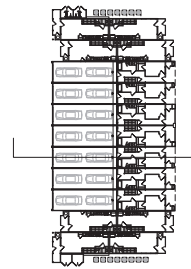
CONCEPTUAL SECTION - BLDG. TYPE-B
(TYPE-C SIMILAR)



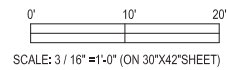
BLDG. TYPE-B











CONCEPTUAL SECTION - BLDG. TYPE-D



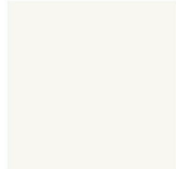



BLDG. TYPE-D



NUMBERS DENOTE MATERIALS









			
1. HORIZONTAL SIDING JAMES HARDIE FINISH: TBD COLOR: VARIES, SEE LEGEND	2. BOARD AND BATTEN JAMES HARDIE FINISH: TBD COLOR: VARIES, SEE LEGEND	3. ROOF SHINGLE GAF TIMBERLINE COLOR: PEWTER GRAY	4. CORRUGATED METAL COLOR: GREY
			
5. COMPOSITE WOOD RAILING	6. PAINTED TRIM COLOR: SHERWIN WILLIAMS 251-C1 TRICORN BLACK SW6258	7. PAINTED POST COLOR: SHERWIN WILLIAMS 251-C1 TRICORN BLACK SW6258	8. WINDOWS VINYL WINDOW-GREY

LETTERS DENOTE COLORS

				
A. EXTERIOR PAINT SHERWIN WILLIAMS WHITE SNOW SW9541	B. EXTERIOR PAINT SHERWIN WILLIAMS 262-C3 SUMMER WHITE SW7557	C. EXTERIOR PAINT SHERWIN WILLIAMS 288-C3 BEACH HOUSE SW7518	D. EXTERIOR PAINT SHERWIN WILLIAMS 200-C6 JUTE BROWN SW6096	E. EXTERIOR PAINT SHERWIN WILLIAMS 226-C7 PERLE NOIR SW9154



NUMBERS DENOTE MATERIALS



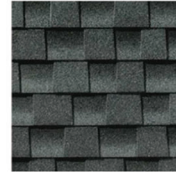





			
1. HORIZONTAL SIDING JAMES HARDIE FINISH: TBD COLOR: VARIES, SEE LEGEND	2. BOARD AND BATTEN JAMES HARDIE FINISH: TBD COLOR: VARIES, SEE LEGEND	3. ROOF SHINGLE GAF TIMBERLINE COLOR: PEWTER GRAY	4. CORRUGATED METAL COLOR: GREY
			
5. COMPOSITE WOOD RAILING	6. PAINTED TRIM COLOR: SHERWIN WILLIAMS 251-C1 TRICORN BLACK SW6258	7. PAINTED POST COLOR: SHERWIN WILLIAMS 251-C1 TRICORN BLACK SW6258	8. WINDOWS VINYL WINDOW-GREY

LETTERS DENOTE COLORS






				
A. EXTERIOR PAINT SHERWIN WILLIAMS WHITE SNOW SW9541	B. EXTERIOR PAINT SHERWIN WILLIAMS 262-C3 SUMMER WHITE SW7557	C. EXTERIOR PAINT SHERWIN WILLIAMS 288-C3 BEACH HOUSE SW7518	D. EXTERIOR PAINT SHERWIN WILLIAMS 200-C6 JUTE BROWN SW6096	E. EXTERIOR PAINT SHERWIN WILLIAMS 226-C7 PERLE NOIR SW9154



NUMBERS DENOTE MATERIALS



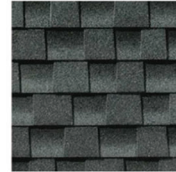





			
1. HORIZONTAL SIDING JAMES HARDIE FINISH: TBD COLOR: VARIES, SEE LEGEND	2. BOARD AND BATTEN JAMES HARDIE FINISH: TBD COLOR: VARIES, SEE LEGEND	3. ROOF SHINGLE GAF TIMBERLINE COLOR: PEWTER GRAY	4. CORRUGATED METAL COLOR: GREY
			
5. COMPOSITE WOOD RAILING	6. PAINTED TRIM COLOR: SHERWIN WILLIAMS 251-C1 TRICORN BLACK SW6258	7. PAINTED POST COLOR: SHERWIN WILLIAMS 251-C1 TRICORN BLACK SW6258	8. WINDOWS VINYL WINDOW-GREY

LETTERS DENOTE COLORS

				
A. EXTERIOR PAINT SHERWIN WILLIAMS WHITE SNOW SW9541	B. EXTERIOR PAINT SHERWIN WILLIAMS 262-C3 SUMMER WHITE SW7557	C. EXTERIOR PAINT SHERWIN WILLIAMS 268-C3 BEACH HOUSE SW7518	D. EXTERIOR PAINT SHERWIN WILLIAMS 200-C6 JUTE BROWN SW6096	E. EXTERIOR PAINT SHERWIN WILLIAMS 226-C7 PERLE NOIR SW9154



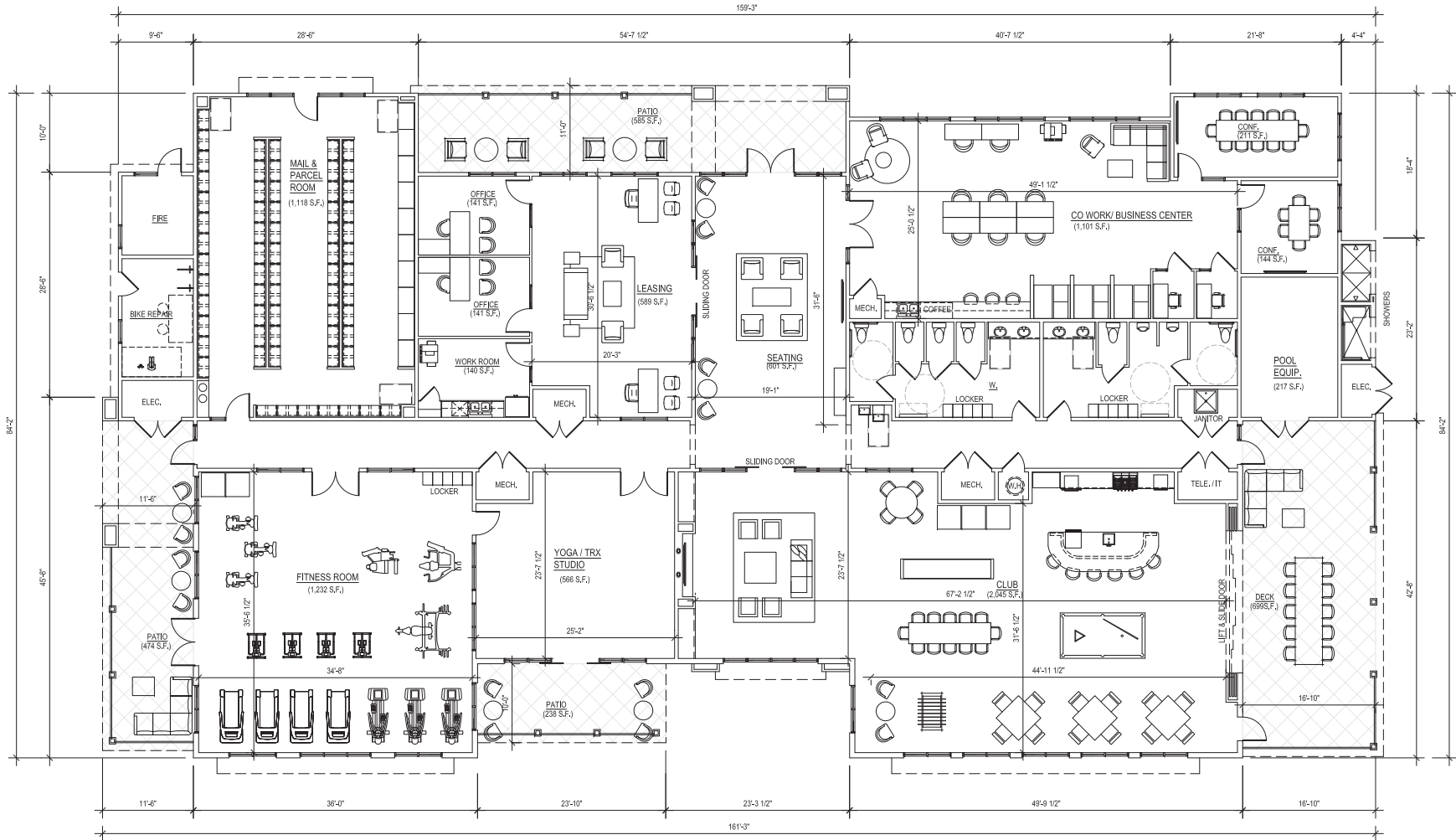
NUMBERS DENOTE MATERIALS

			
1. HORIZONTAL SIDING JAMES HARDIE FINISH: TBD COLOR: VARIES, SEE LEGEND	2. BOARD AND BATTEN JAMES HARDIE FINISH: TBD COLOR: VARIES, SEE LEGEND	3. ROOF SHINGLE GAF TIMBERLINE COLOR: PEWTER GRAY	4. CORRUGATED METAL COLOR: GREY
			
5. COMPOSITE WOOD RAILING	6. PAINTED TRIM COLOR: SHERWIN WILLIAMS 251-C1 TRICORN BLACK SW6258	7. PAINTED POST COLOR: SHERWIN WILLIAMS 251-C1 TRICORN BLACK SW6258	8. WINDOWS VINYL WINDOW-GREY

LETTERS DENOTE COLORS

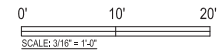
				
A. EXTERIOR PAINT SHERWIN WILLIAMS WHITE SNOW SW9541	B. EXTERIOR PAINT SHERWIN WILLIAMS 262-C3 SUMMER WHITE SW7557	C. EXTERIOR PAINT SHERWIN WILLIAMS 288-C3 BEACH HOUSE SW7518	D. EXTERIOR PAINT SHERWIN WILLIAMS 200-C6 JUTE BROWN SW6096	E. EXTERIOR PAINT SHERWIN WILLIAMS 226-C7 PERLE NOIR SW9154

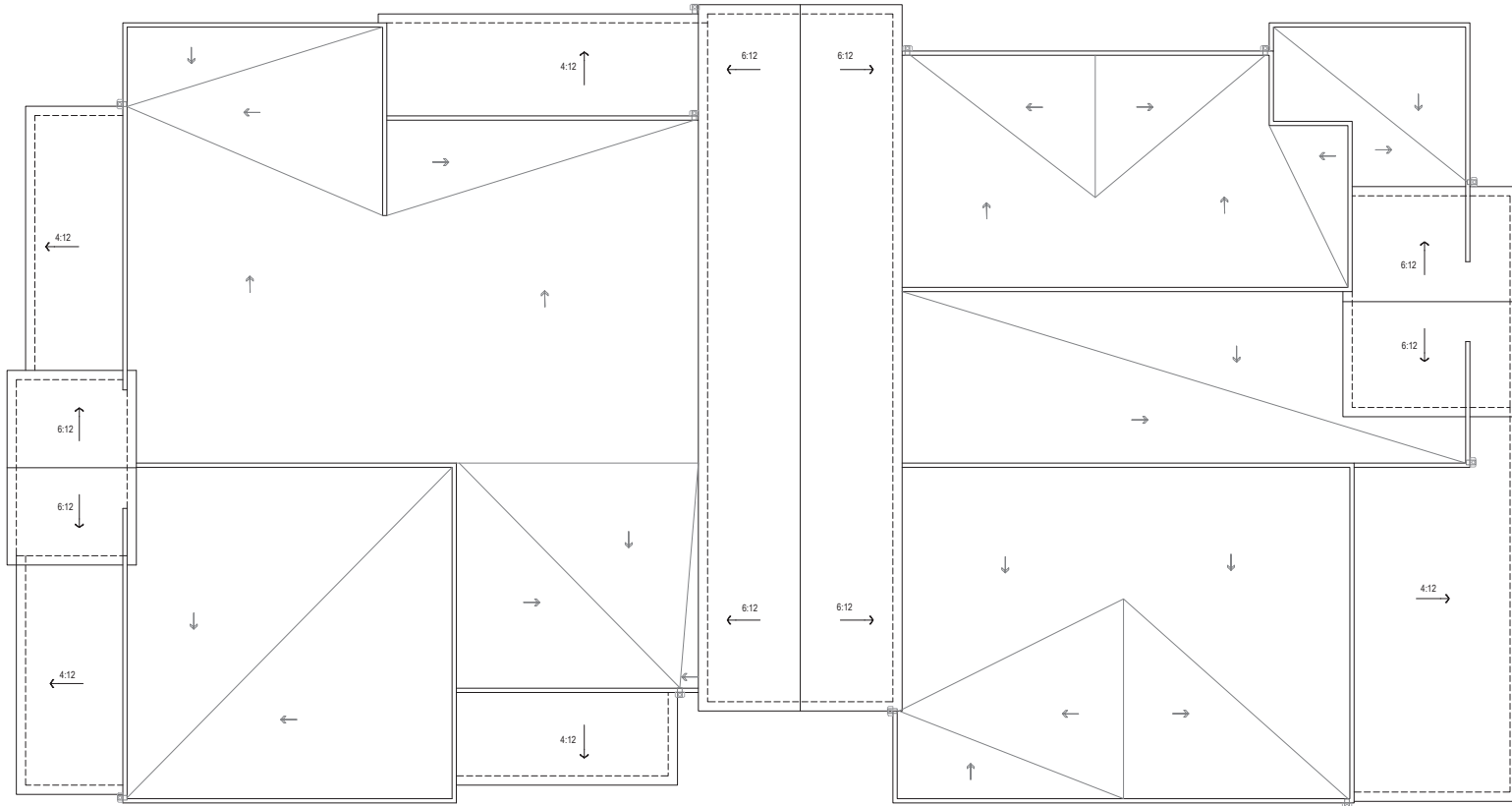




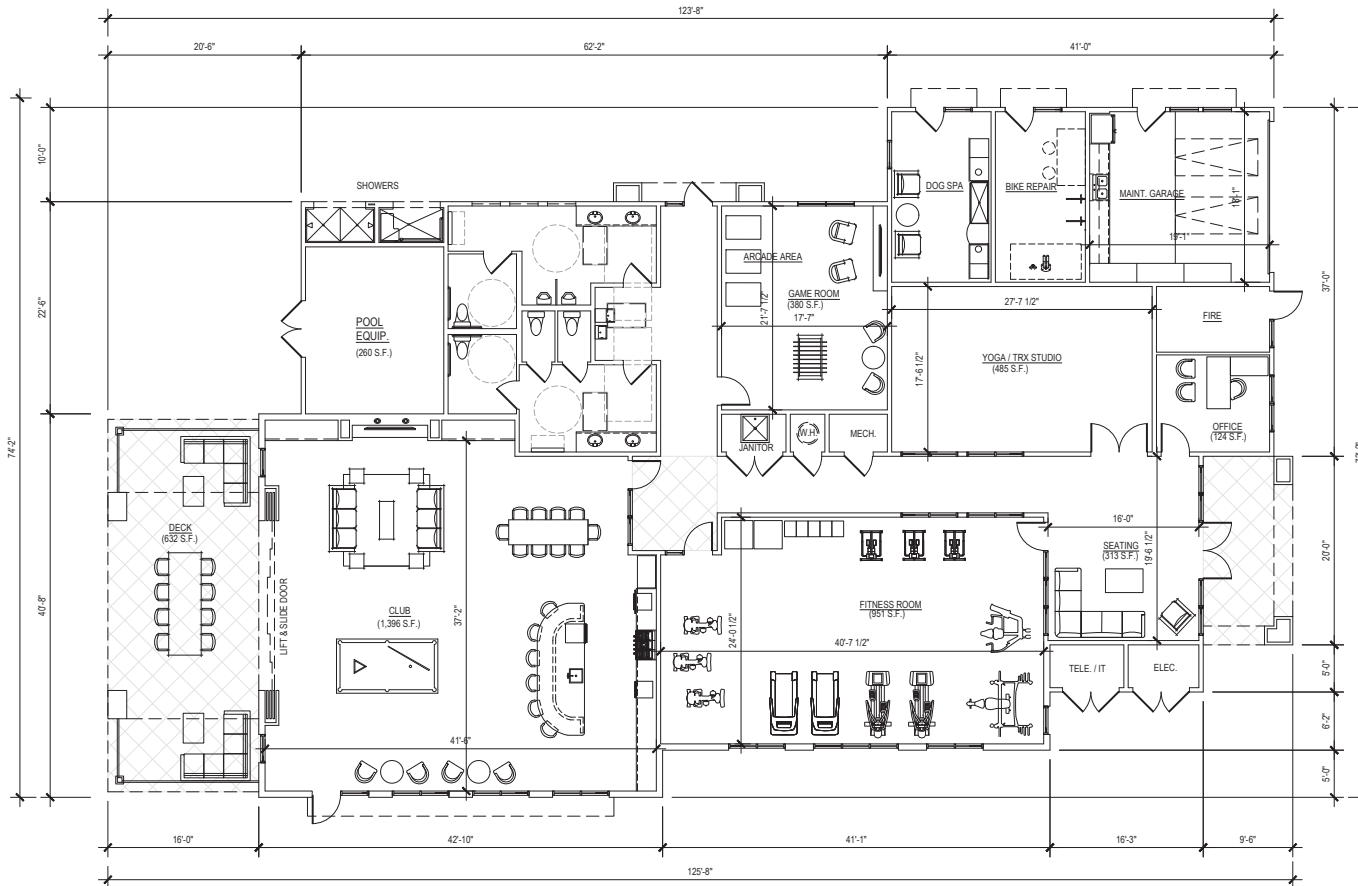
CLUBHOUSE-1 PLAN

NET AREA : 10,899 S.F.
 PATIOS : 1,996 S.F.
 TOTAL GROSS : 12,895 S.F.



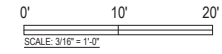


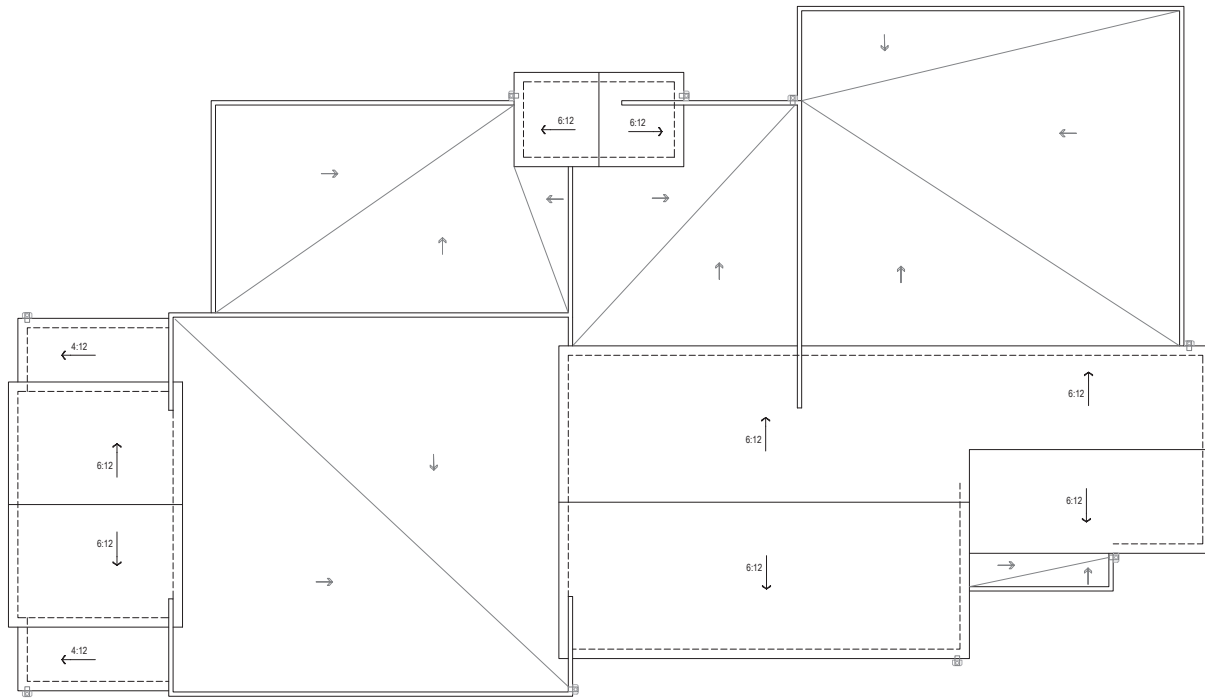
CLUBHOUSE-1 ROOF PLAN
 0' 10' 20'
 SCALE: 3/16" = 1'-0"



CLUBHOUSE-2 PLAN

NET AREA : 6,674 S.F.
 DECK : 632 S.F.
 TOTAL GROSS : 7,306 S.F.





CLUBHOUSE-2 ROOF PLAN
 0' 10' 20'
 SCALE: 3/16" = 1'-0"



CLUBHOUSE-1 FRONT ELEVATION



CLUBHOUSE-1 RIGHT ELEVATION

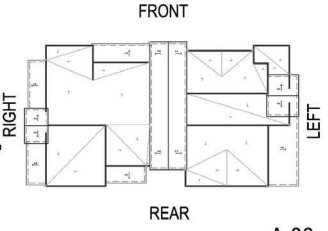
CLUBHOUSE-1 LEFT ELEVATION



CLUBHOUSE-1 REAR ELEVATION

0' 10' 20'
SCALE: 3/16" = 1'-0"

- MATERIAL & COLOR**
- 1. BOARD AND BATTEN
 - 2. HORIZONTAL SIDING
 - 3. METAL ROOF COLOR: GRAY
 - 4. CORRUGATED METAL COLOR: GREY
 - 5. METAL AWNING
 - 6. PAINTED GARAGE DOOR
 - 7. PAINTED POST
 - 8. COMPOSITE WOOD RAILING
 - 9. STOREFRONT BRONZE
- A. SHERWIN WILLIAMS CYBERSPACE SW7076
 - B. SHERWIN WILLIAMS ELLIE GRAY SW7650
 - C. SHERWIN WILLIAMS ICE CUBE SW6252





CLUBHOUSE-2 REAR ELEVATION

CLUBHOUSE-2 FRONT ELEVATION



CLUBHOUSE-2 LEFT ELEVATION

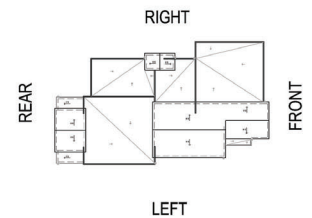


CLUBHOUSE-2 RIGHT ELEVATION


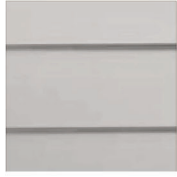


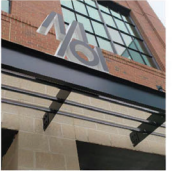




0' 10' 20'
SCALE: 3/16" = 1'-0"

MATERIAL & COLOR



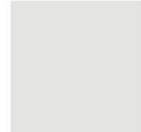
- 1. BOARD AND BATTEN
 - 2. HORIZONTAL SIDING
 - 3. METAL ROOF COLOR: GRAY
 - 4. CORRUGATED METAL COLOR: GREY
 - 5. METAL AWNING
 - 6. PAINTED GARAGE DOOR
 - 7. PAINTED POST
 - 8. COMPOSITE WOOD RAILING
 - 9. STOREFRONT BRONZE
- A. SHERWIN WILLIAMS CYBERSPACE SW7076
 - B. SHERWIN WILLIAMS ELLIE GRAY SW7650
 - C. SHERWIN WILLIAMS ICE CUBE SW6252



NUMBERS DENOTE MATERIALS

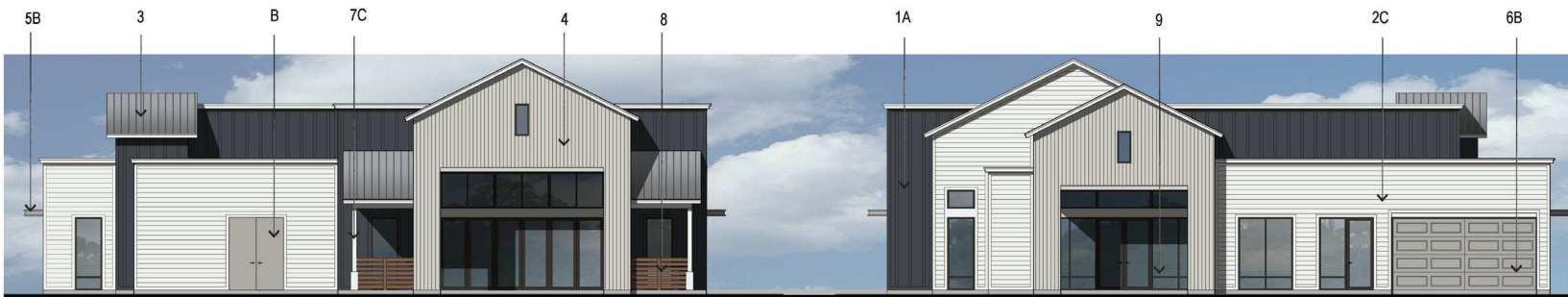
				
1. BOARD AND BATTEN JAMES HARDIE FINISH: TBD COLOR: VARIES, SEE LEGEND	2. FIBER CEMENT HORIZONTAL SIDING JAMES HARDIE FINISH: TBD COLOR: VARIES, SEE LEGEND	3. METAL ROOF ATAS STANDING SEAM COLOR: DOVE GREY OR SIMILAR	4. CORRUGATED METAL COLOR: GREY	5. METAL AWNING
				
6. PAINTED GARAGE DOOR	7. PAINTED POST	8. COMPOSITE WOOD RAILING	9. ALUMINUM STOREFRONT COLOR: BRONZE	

LETTERS DENOTE COLORS

		
A. EXTERIOR PAINT SHERWIN WILLIAMS 235-C7 CYBERSPACE SW7076	B. EXTERIOR PAINT SHERWIN WILLIAMS 239-C6 ELLIE GRAY SW7650	C. EXTERIOR PAINT SHERWIN WILLIAMS 257-C3 ICE CUBE SW6252

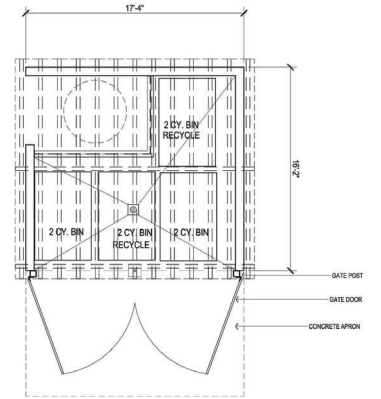
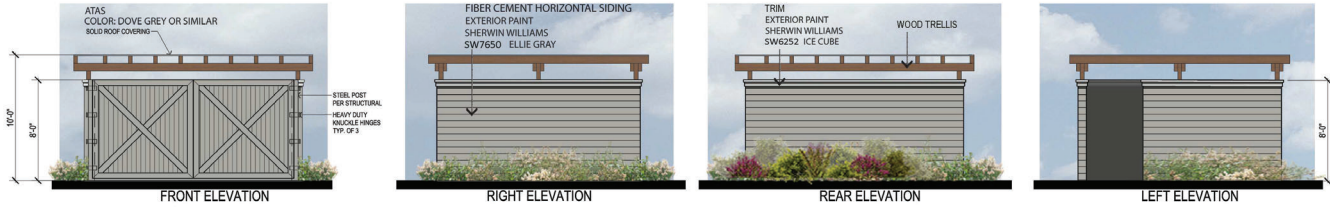


CLUBHOUSE-1 FRONT ELEVATION



CLUBHOUSE-2 REAR ELEVATION

CLUBHOUSE-2 FRONT ELEVATION



TRASH ENCLOSURE PLAN



BAJA PRE-FABRICATED SINGLE POST BACK TO BACK SOLAR CARPORTS COVERS TWO SINGLE ROWS



MILGARD STYLE LINE SERIES VINYL WINDOW- SINGLE HUNG (OR SIMILAR)



BAJA PRE-FABRICATED DOUBLE POST OR FULL CANTILEVER OFFSET TAPERED SOLAR CARPORTS COVERS ONE SINGLE ROWS



BRONZE (OR SIMILAR)

