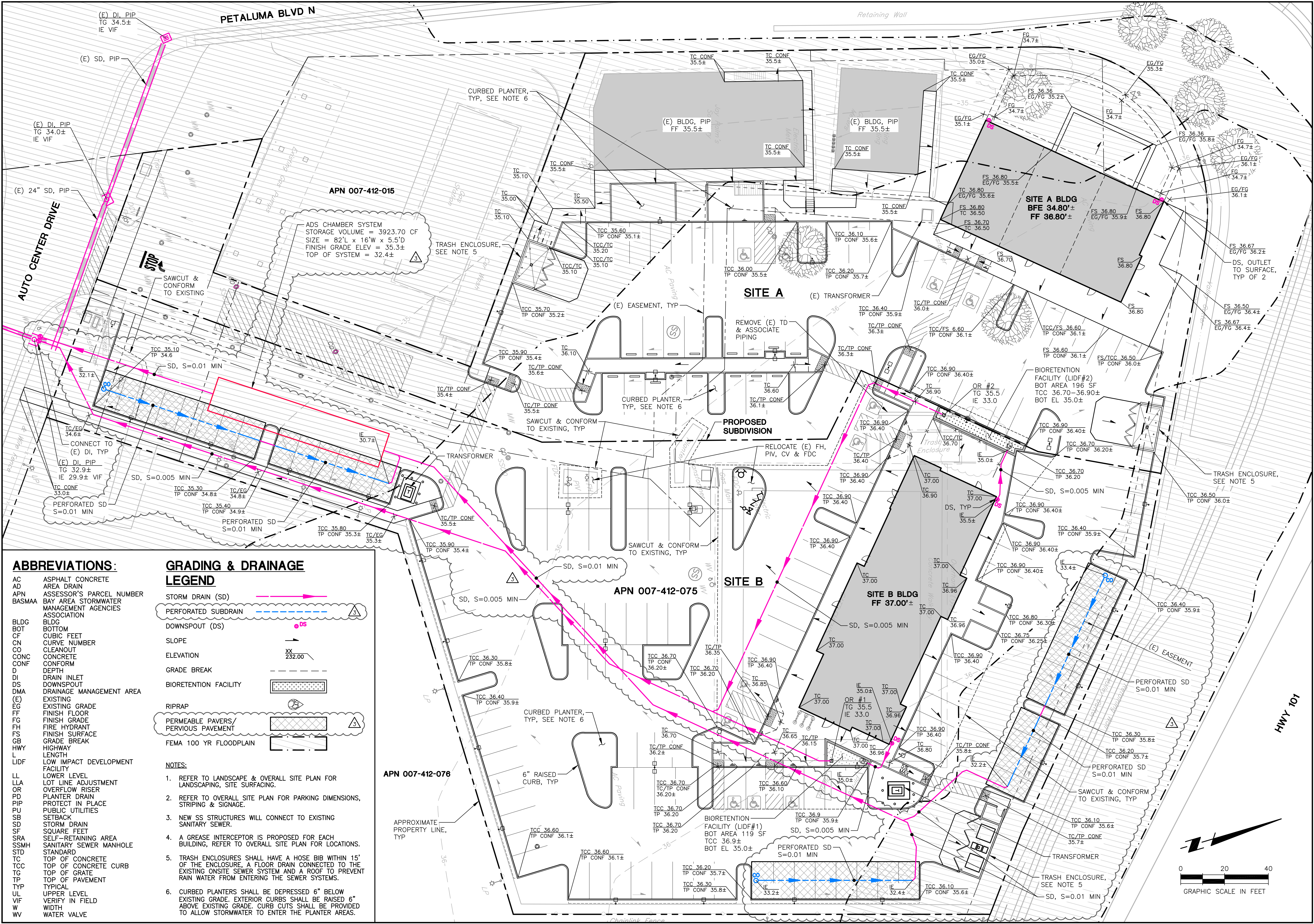


THIS DOCUMENT, AND THE IDEAS AND DESIGNS INCORPORATED HEREIN, IS THE PROPERTY OF SUMMIT ENGINEERING, INC. AND IS NOT TO BE USED IN WHOLE OR IN PART, FOR ANY OTHER PROJECT WITHOUT THE WRITTEN AUTHORIZATION OF SUMMIT ENGINEERING, INC.



SUMMIT
Engineering, Inc.
575 W College Ave., Suite 201 • Santa Rosa, CA 95401
707-527-0775 • www.summit-sr.com

DYNAMIC REAL ESTATE PARTNERS, LLC
5002 PETALUMA BLVD N
PETALUMA, CA 94952
APN 007-412-075

5002 PETALUMA BLVD N

PRELIMINARY GRADING & DRAINAGE PLAN

1	2022-10-07 SPAR SUBMITTAL
2	2022-12-01 SPAR RESUBMITTAL
3	2023-01-30 SPAR RESUBMITTAL
4	2023-04-06 SPAR RESUBMITTAL

DATE: 2022-10-07
JOB NO: 2022086
SCALE: AS SHOWN
DRAWN: TAF
CHECKED: TCS
SHEET **C2**
SHEET 1 OF 1