

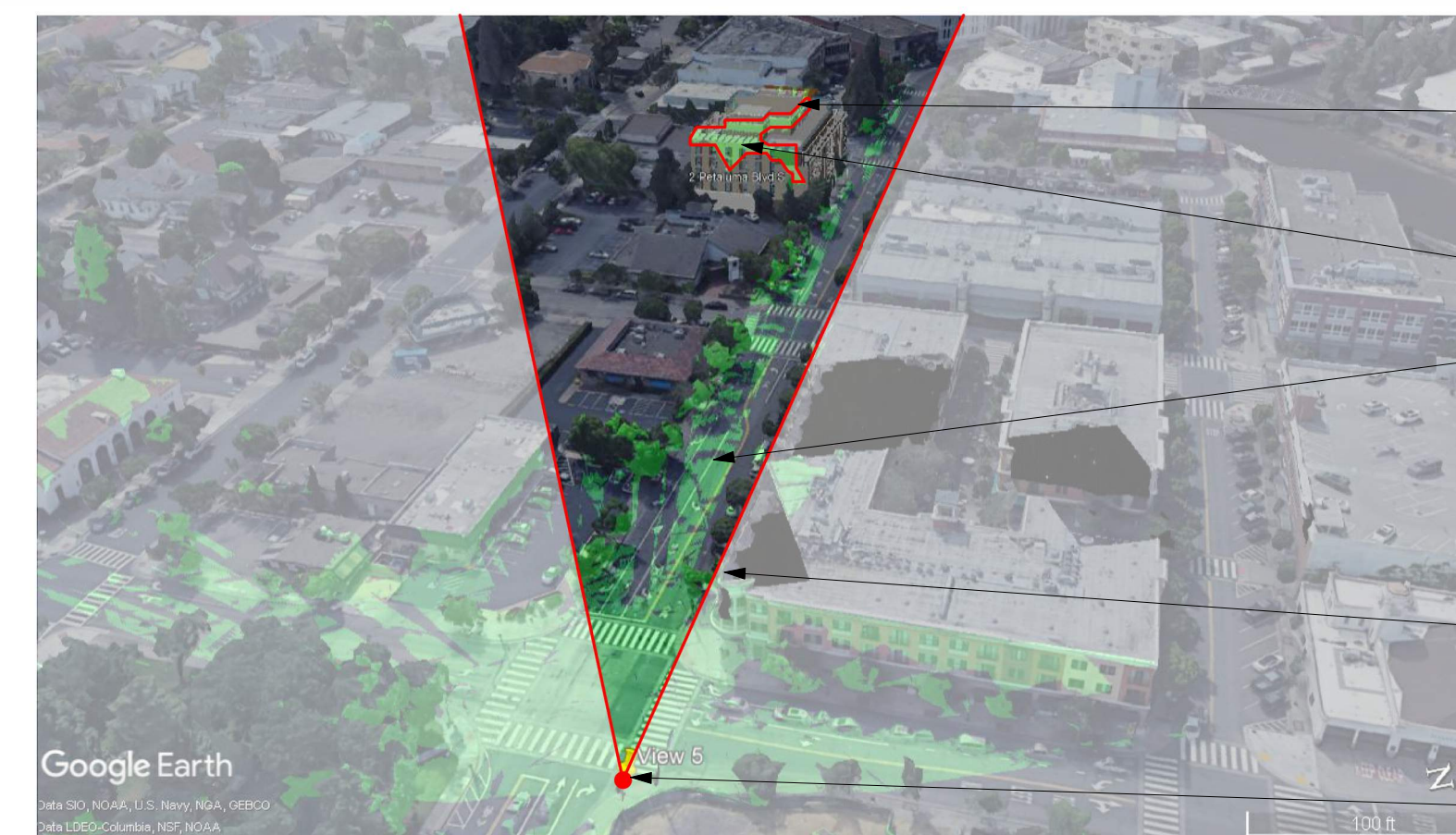
VIEW SHED ANALYSIS

LEGEND:

VIEW POINT
ESTIMATE OF VIEW SHED FROM VIEW POINT



KEY MAP



COMPUTER GENERATED AERIAL VIEW SHED WITH BUILDING IN PLACE

RED:
VISIBLE PORTION OF HOTEL

GREEN:
VISIBLE SURFACES FROM VIEW POINT (360 DEGREES)

APPROX VIEW ANGLE

VIEW POINT



PHOTO IMAGE OF VIEW POINT FOR REFERENCE



COMPUTER GENERATED VIEW POINT w/ BUILDING IN PLACE

RED:
CORRESPONDING OUTLINE OF HOTEL FROM ANALYSIS ABOVE



VIEW SHED KEY MAP

Methodology:

Architectural 3D model was exported from the design software and then geolocated precisely in Google Earth Pro. Once the model is imported into Google Earth Pro, the height and size of the building is accurate in relation to the existing buildings (per Google Earth data).

With the model accurately placed into Google Earth, view images from the various street views can be created. These views are set to an eye height of 2m (~6 feet) with an approximate view angle of 60 degrees.

Due to the limited graphic quality from the Google Earth computer generated images, we highlighted the visible portion of the proposed building with a red outline.

The aerial view shed analysis drawings are generated by Google Earth to highlight the surfaces that are visible 360 degrees at the pin pointed view (at an eye height of 2m). These surfaces are highlighted in green.

The view points identified on the key were suggested by City Staff.

Page Southerland Page, Inc.
414 Jackson Street, 4th Floor
San Francisco, CA 94111
page@pspi.com

Tel: 415.249.0130
Fax: 415.249.0132

ARCHITECTURE / ENGINEERING / INTERIORS / PLANNING / CONSULTING
Albuquerque / Austin / Dallas / Denver / Dubai / Houston /
Mexico City / Phoenix / San Francisco / Washington DC /
International Affiliates Offices

MEP: INTERFACE ENGINEERING BRIGHTVIEW DESIGN GROUP
601 South Figueroa Street Suite 2750 Los Angeles CA 90017 323.536.2362
LANDSCAPE: 1645 Grant Street Denver, Colorado 80203 Address Line 3 949.238.4900

STRUCTURE: BUEHLER ENGINEERING 5 Third Street Suite 1125 San Francisco, CA 94103 213.684.3408
FF&E: DH-COMPANIES 7591 Coppermine Drive Manassas, VA, 20109

INTERIORS: SIXTEEN FIFTY 7509 Girard Ave La Jolla, CA 92037 858.454.6909
CIVIL: N CONSULTING ENGINEERS 4 Park Plz Irvine, CA 92614 949.369.1161

EKN Petaluma LLC
HOTEL WEAVER
2 Petaluma Blvd South
Petaluma, California

REVISION HISTORY

REVISION DESCRIPTION DATE
PROFESSIONAL SEALS
INTERIM REVIEW
THIS DOCUMENT IS RELEASED FOR THE PURPOSE OF INTERIM REVIEW UNDER THE AUTHORITY OF *** choose ARCHITECT or ENGINEER ***
from list in Family Types
IT IS NOT TO BE USED FOR REGULATORY APPROVAL, BIDDING, PERMIT, OR CONSTRUCTION PURPOSES.

VIEW SHED ANALYSIS

DRAWN BY: Author CHECKED BY: Checker
PROJECT NUMBER: 621010 PROJECT ABBREVIATION: PH
ORIGINAL ISSUE DATE: 08 SEPTEMBER 2023

Page Southernland Page, Inc.
414 Jackson Street, 4th Floor
San Francisco, CA 94111
pageslink.com

Tel: 415.249.0130
Fax: 415.249.0132
ARCHITECTURE / ENGINEERING / INTERIOR / PLANNING / CONSULTING
Albuquerque / Austin / Dallas / Denver / Dubai / Houston /
Mexico City / Phoenix / San Francisco / Washington DC /
International Affairs Offices

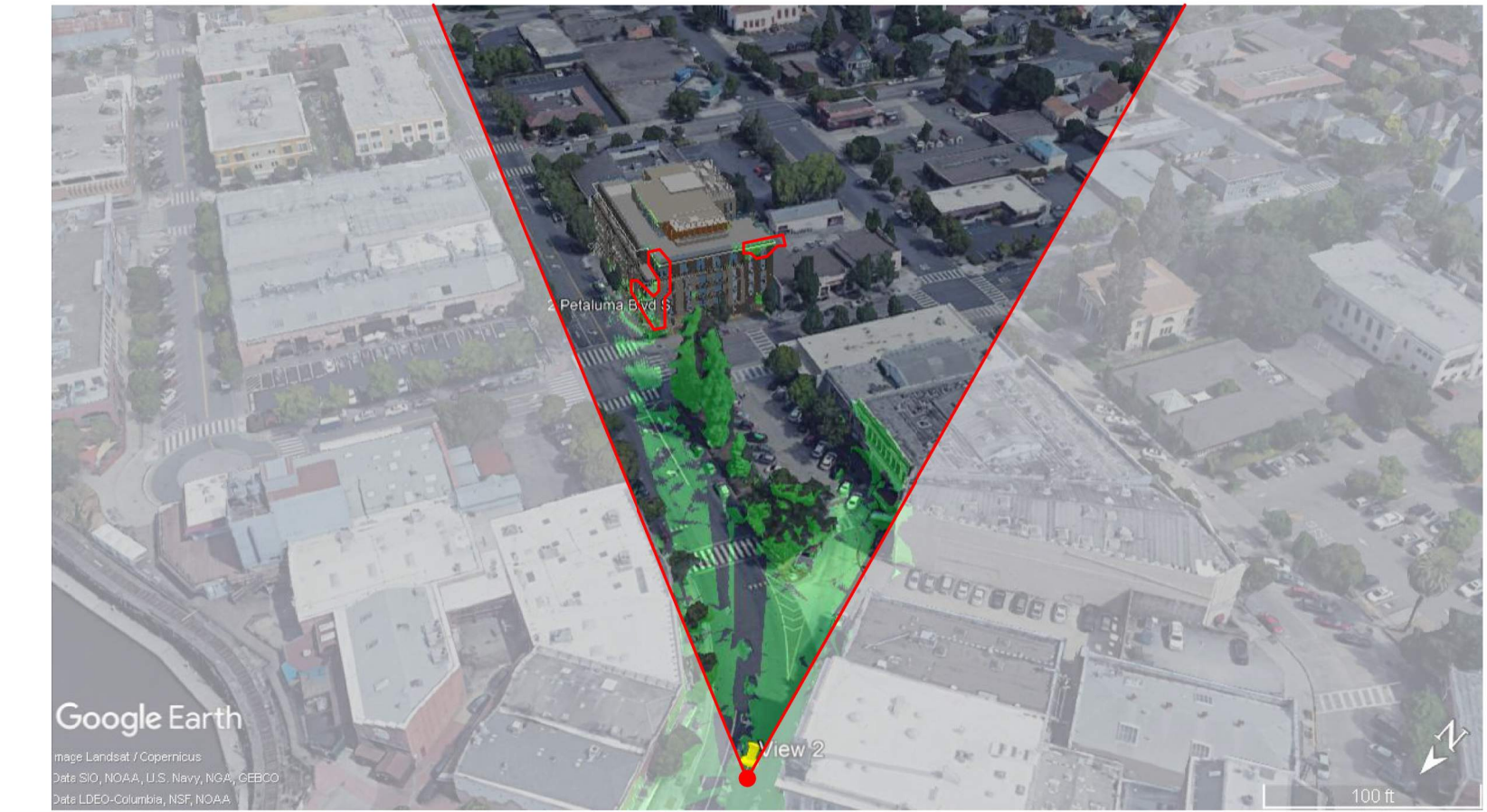
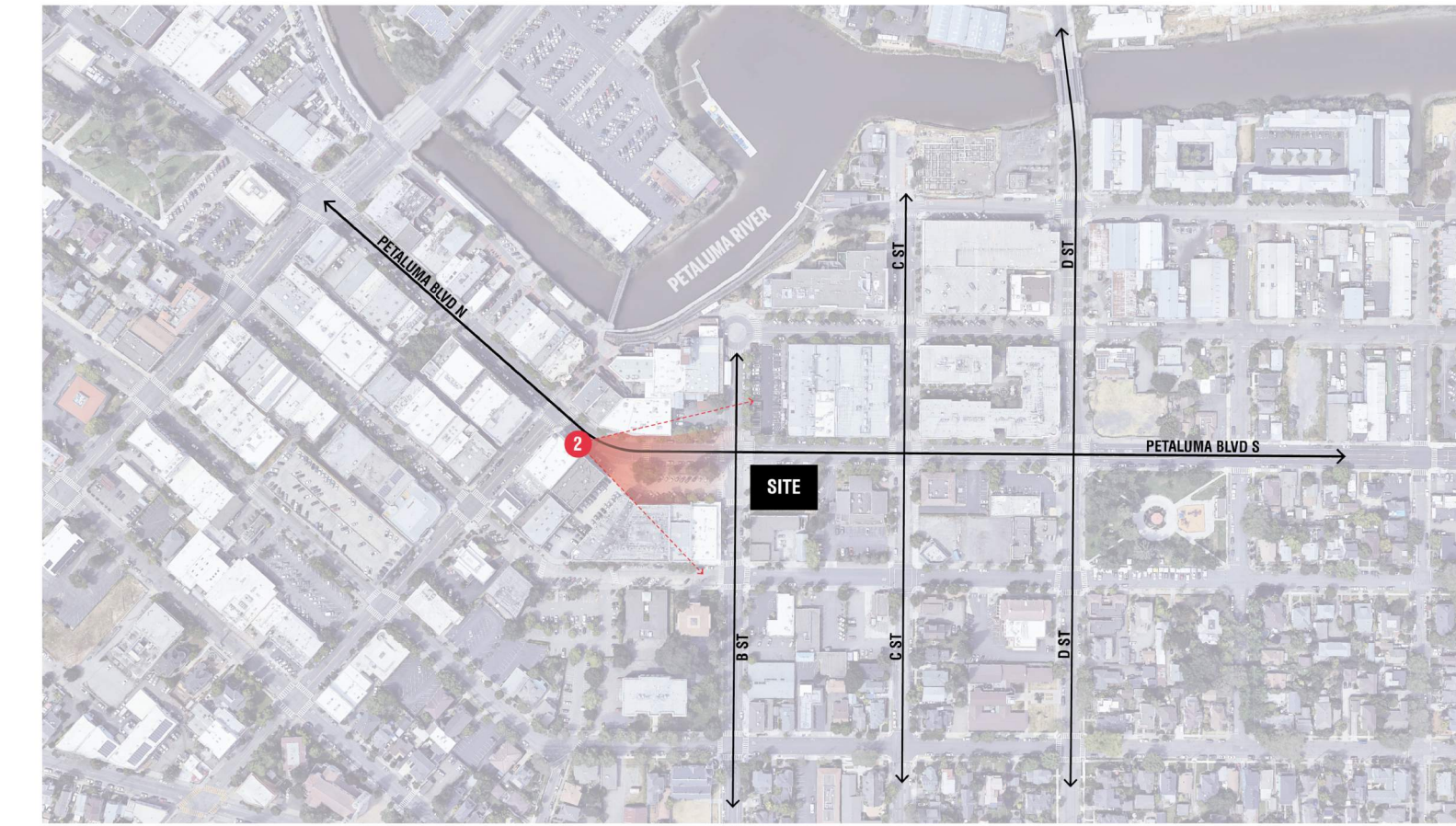
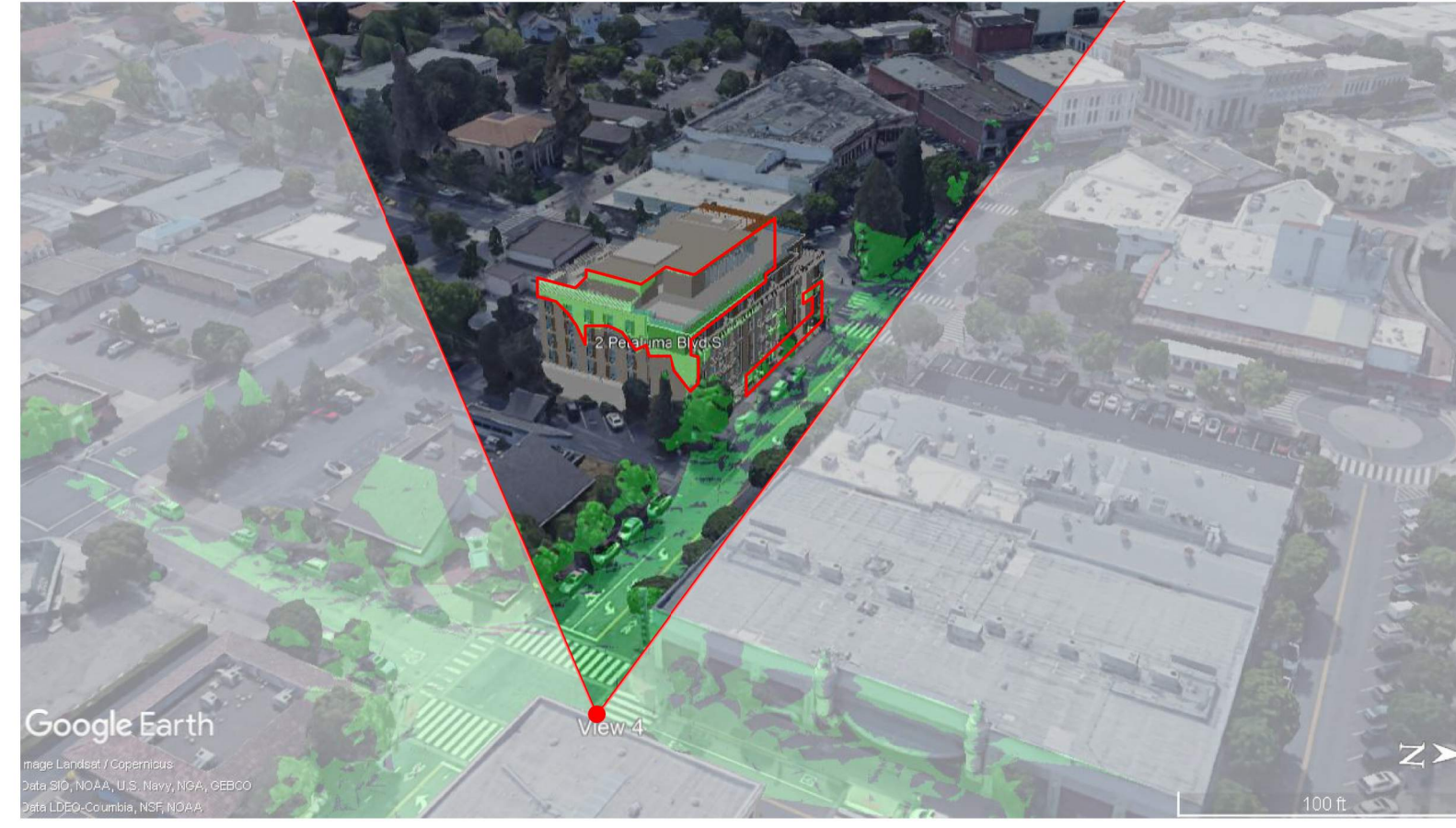
MEP
INTERFACE ENGINEERING BRIGHTVIEW DESIGN GROUP
601 South Figueroa Street 1645 Grant Street
Suite 2750 Denver, Colorado 80203
Los Angeles CA 90017 Address Line 3
323 536 2362 949 238 4900

STRUCTURE
BUEHLER ENGINEERING DH-COMPANIES
5 Third Street 7591 Coppermine Drive
Suite 1125 San Francisco, CA 94103
213 694 3408 Manassas, VA, 20109

INTERIORS
SIXTEEN FIFTY
7509 Girard Ave 4 Park Plz
La Jolla, CA Irvine, CA
92034 92014
858 454 6909 949 369 1161

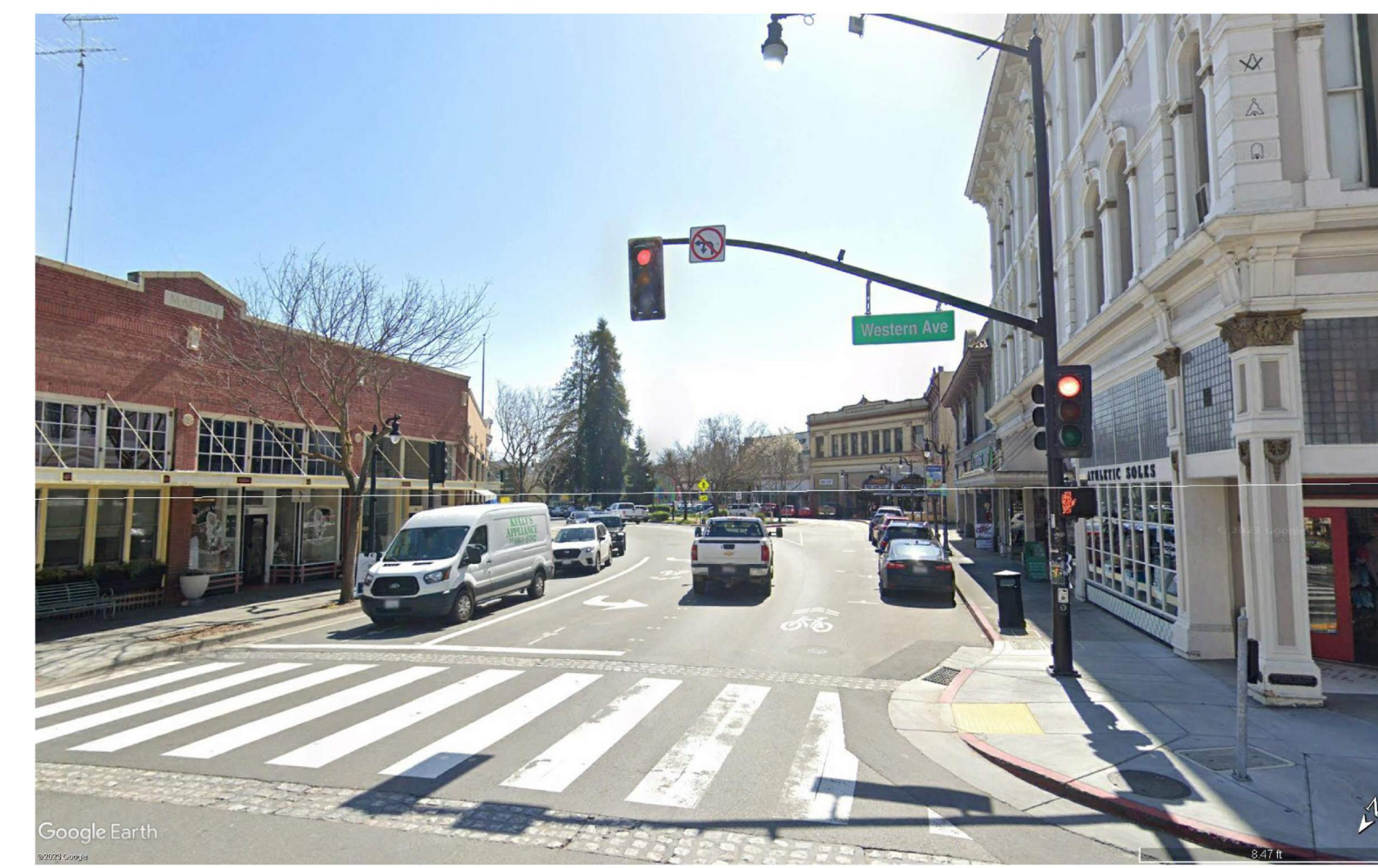
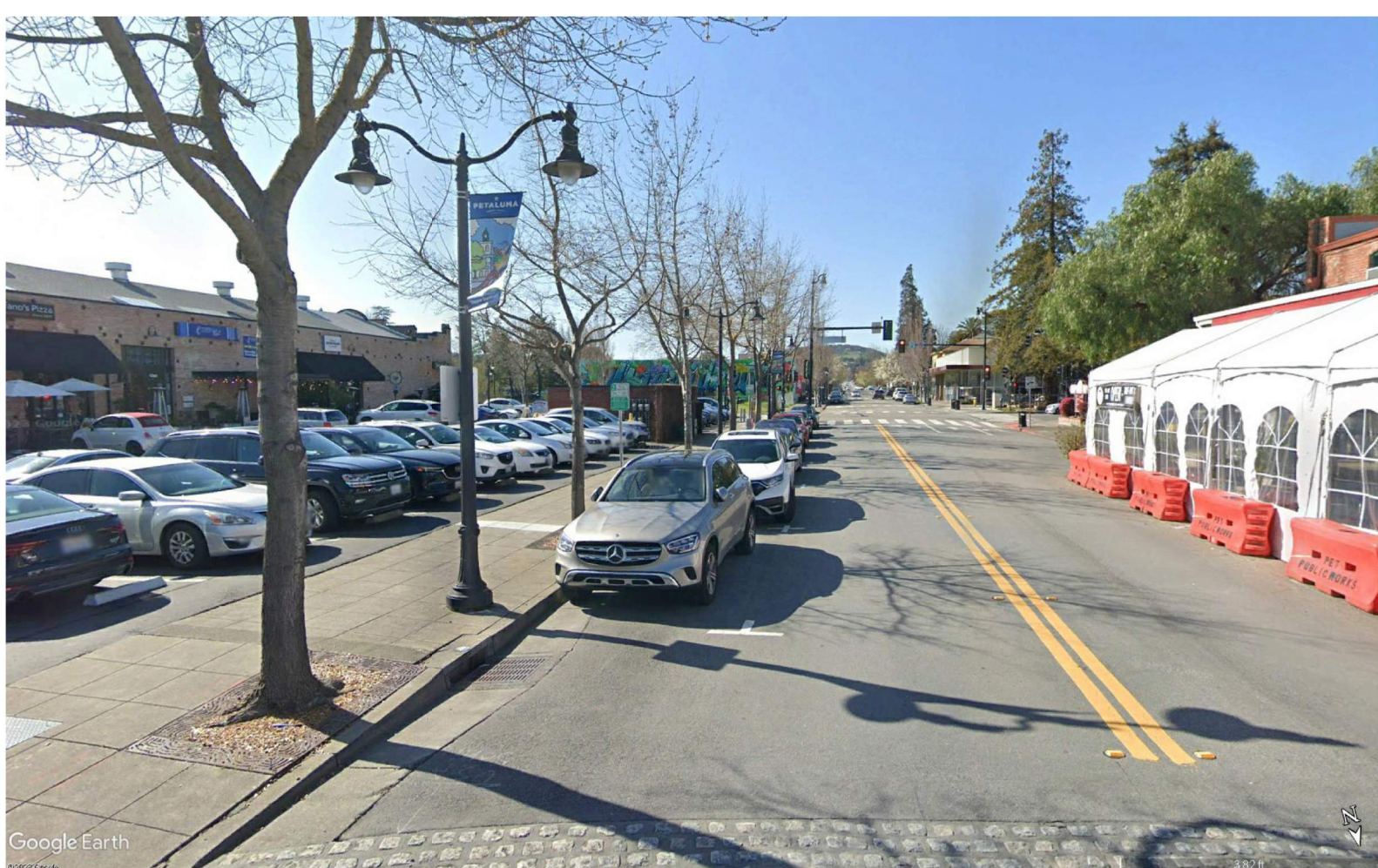
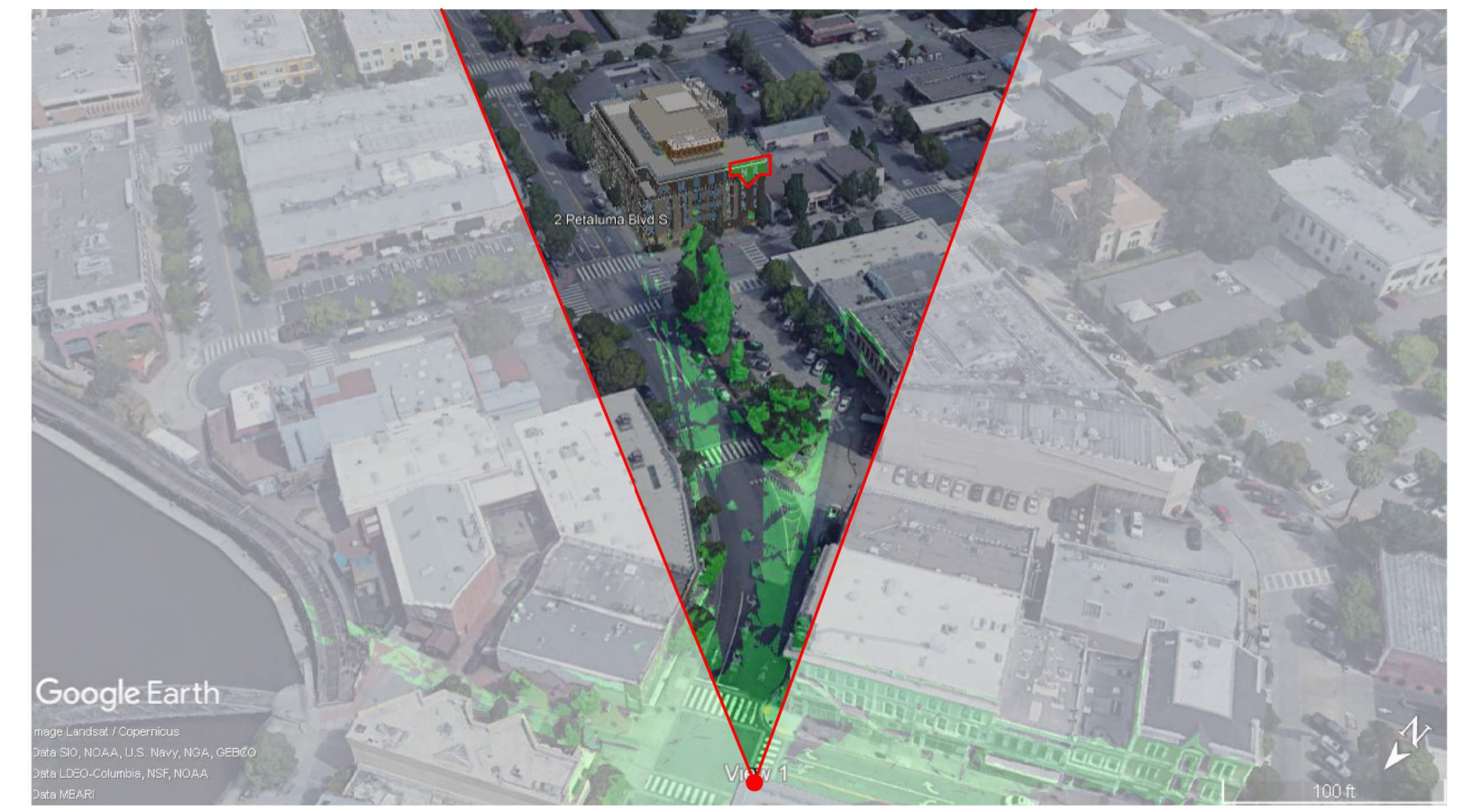
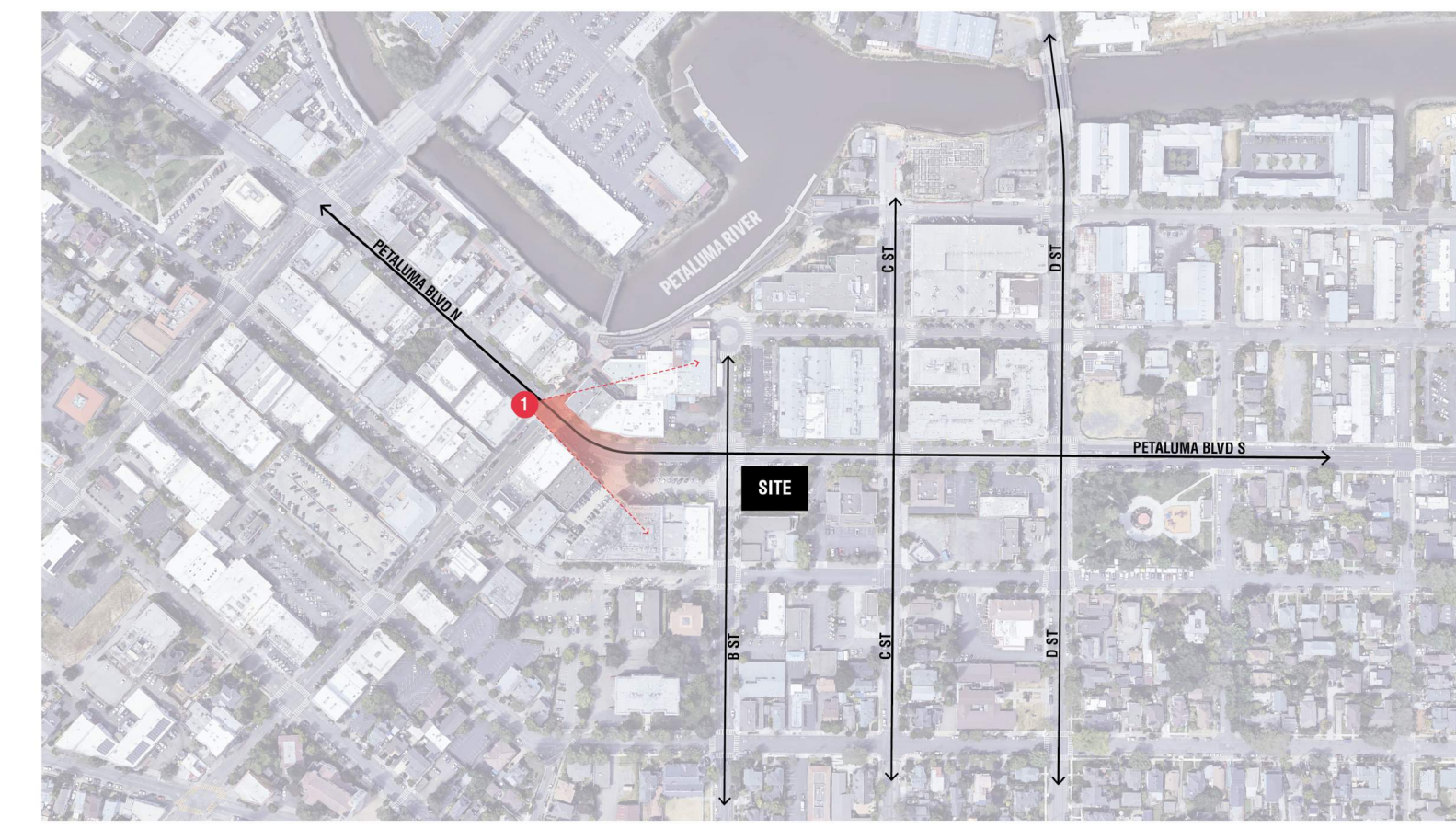
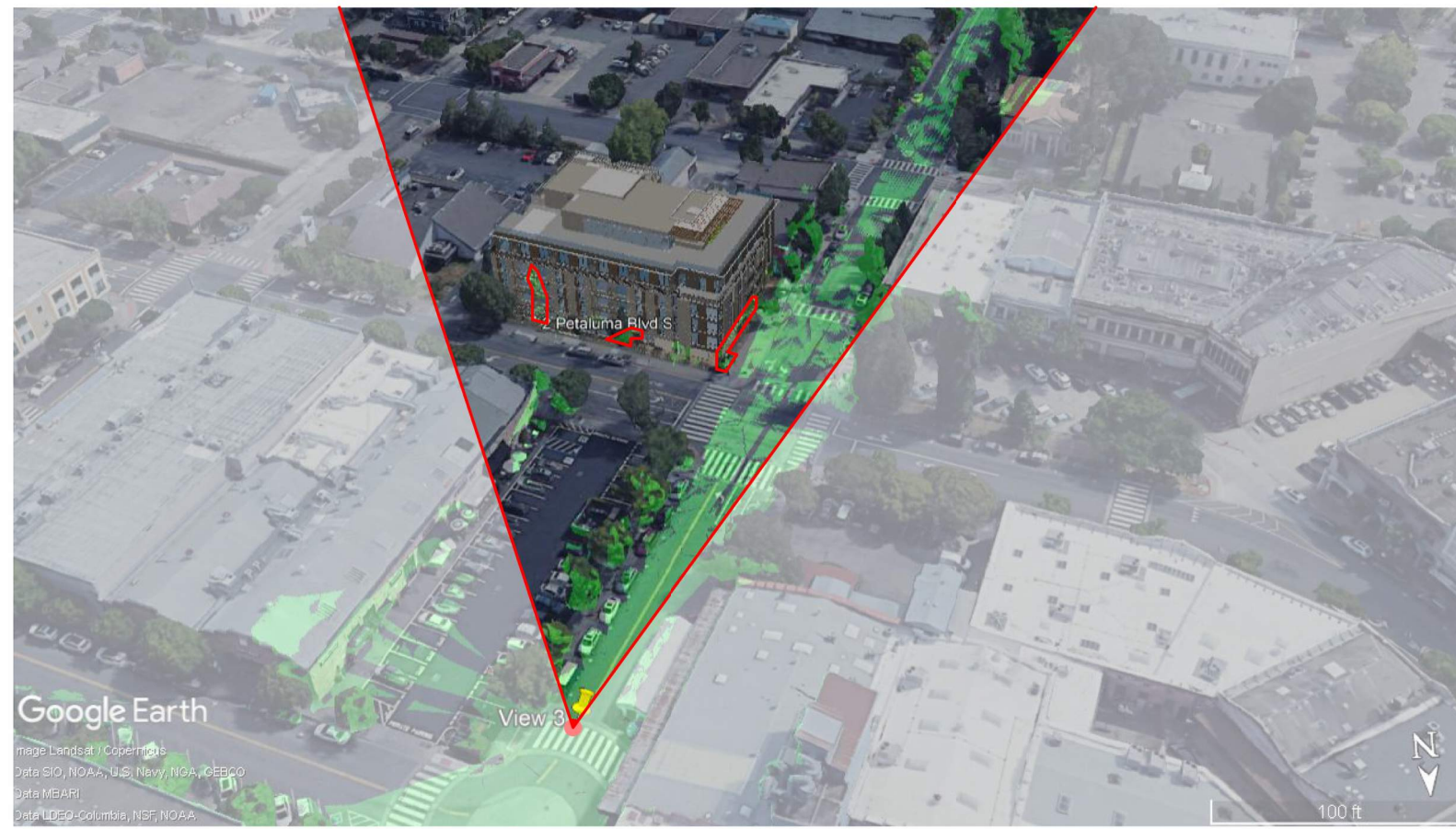
CIVIL
N CONSULTING ENGINEERS
4 Park Plz
Irvine, CA
92014
949 369 1161

EKN Petaluma LLC HOTEL WEAVER 2 Petaluma Blvd South Petaluma, California



View 4

View 2



View 3

View 1

REVISION HISTORY

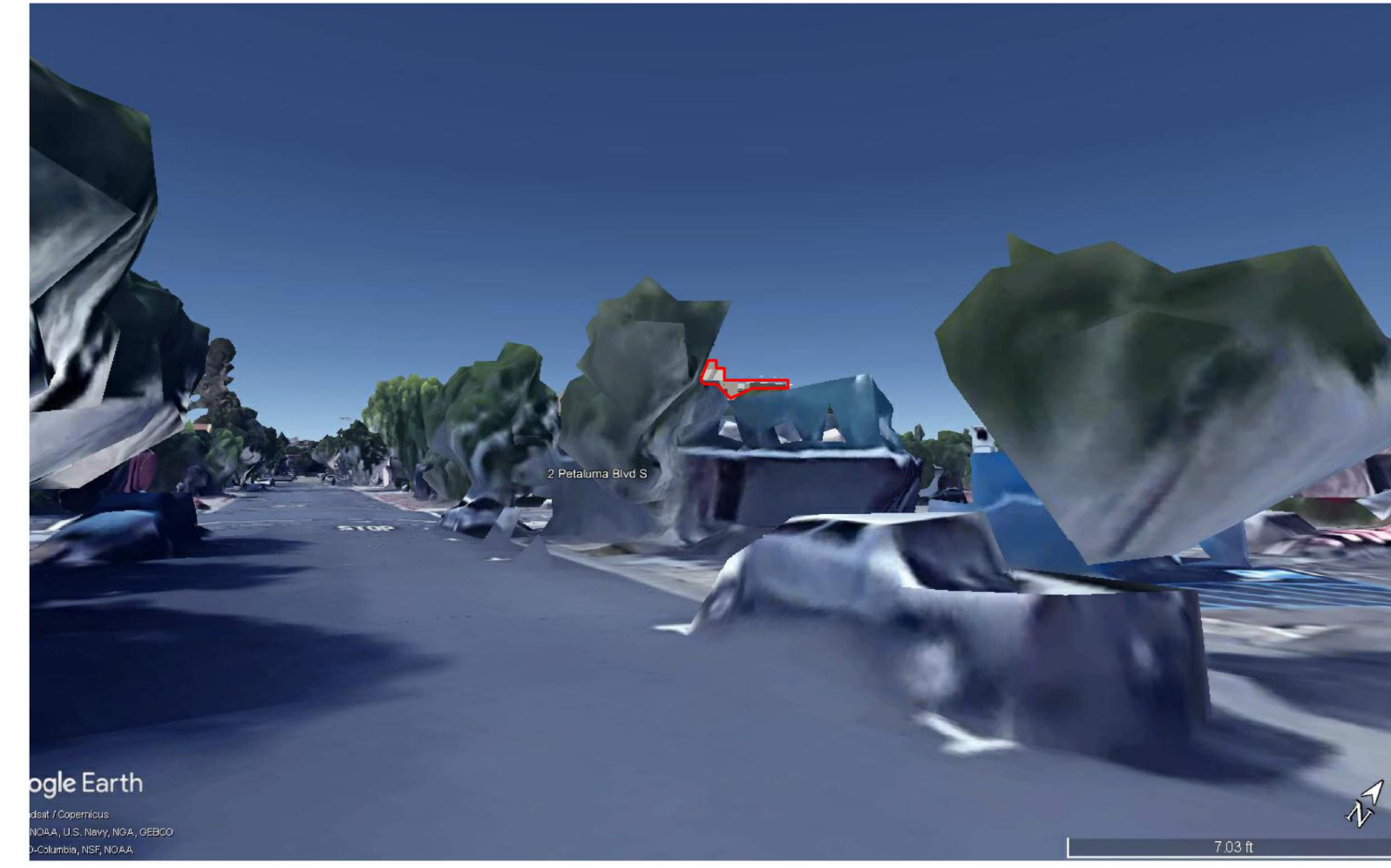
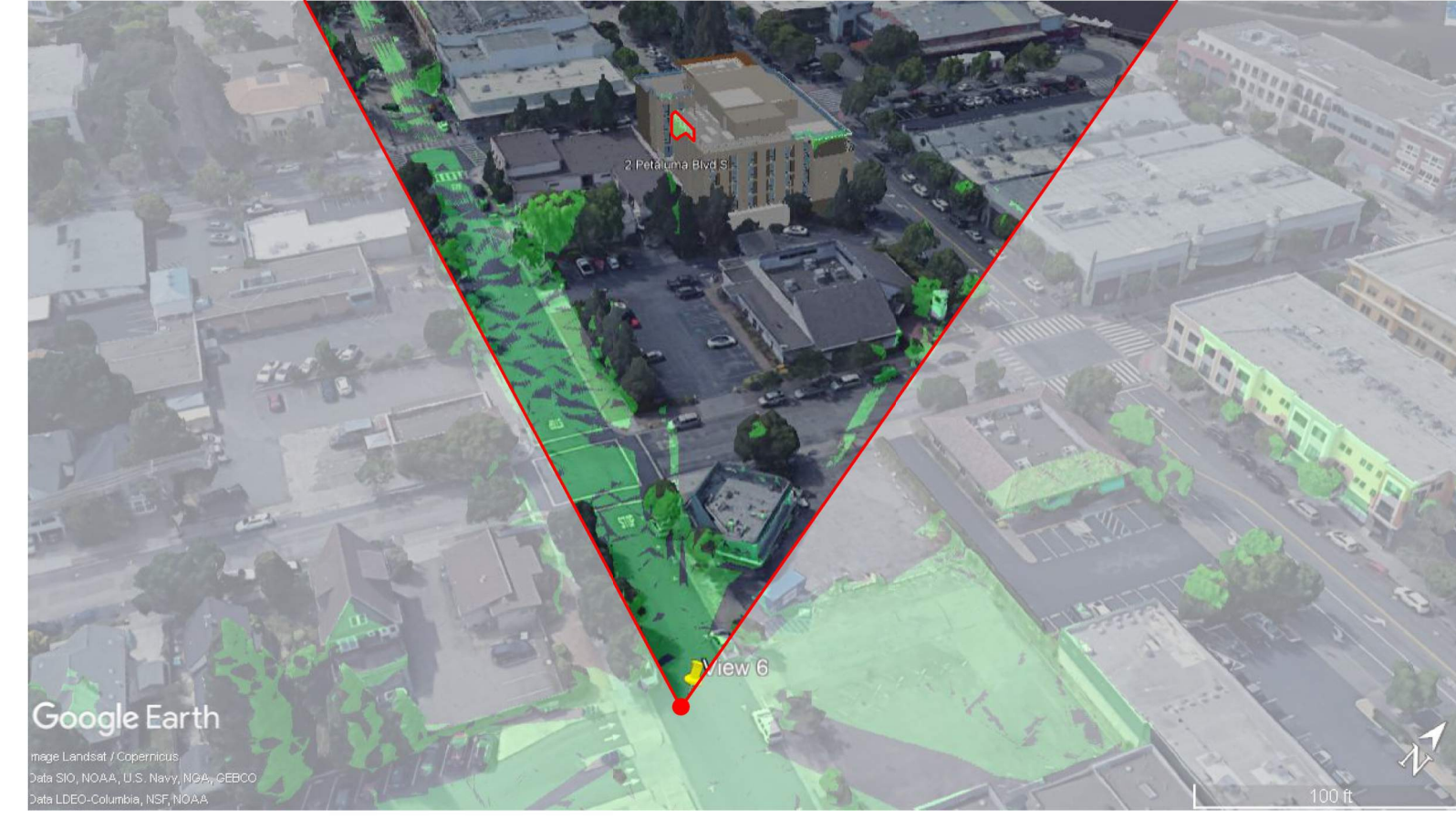
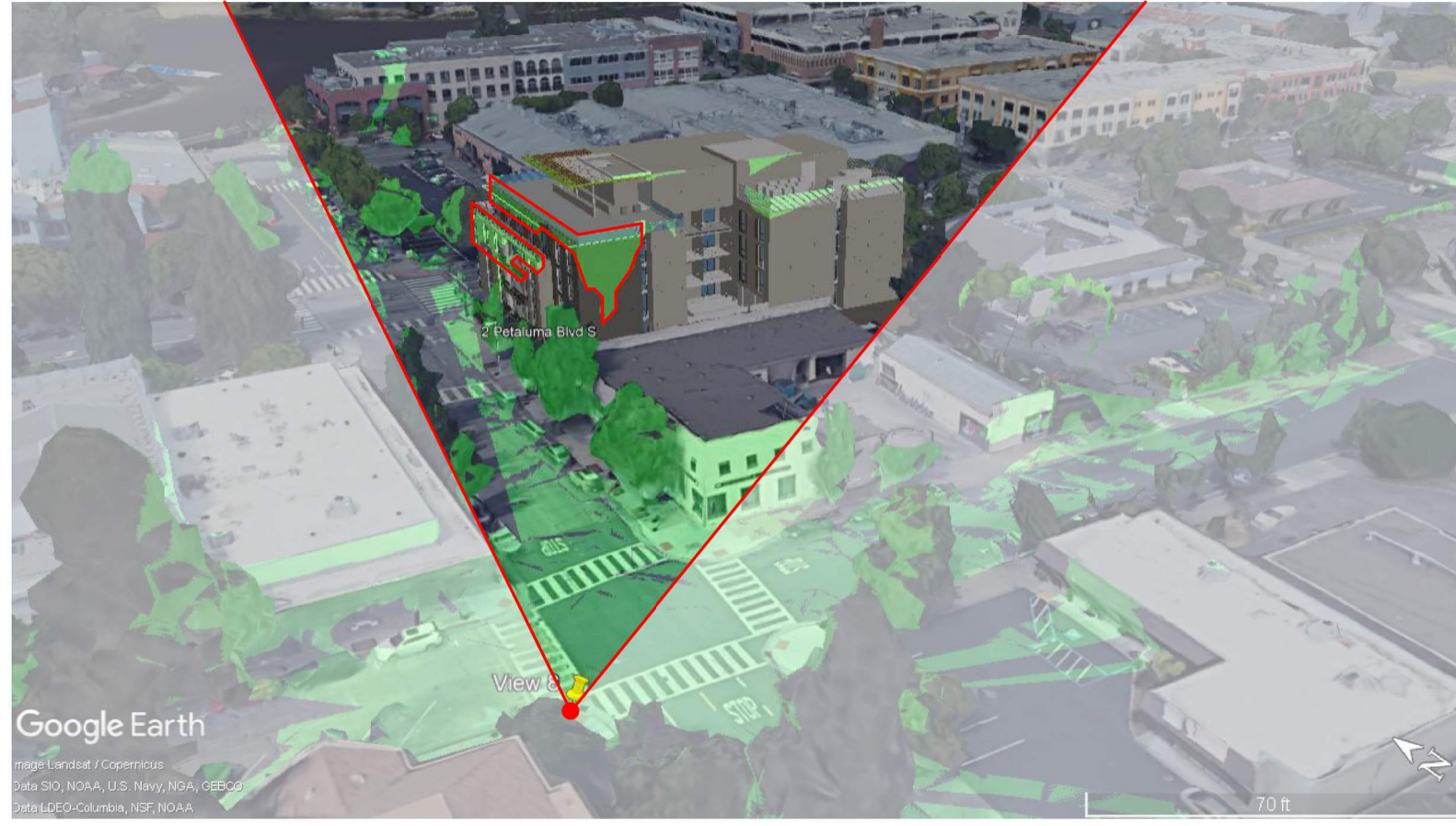
REVISION	DESCRIPTION	DATE
1	INTERIM REVIEW	

THIS DOCUMENT IS RELEASED FOR THE PURPOSE OF INTERIM REVIEW UNDER THE AUTHORITY OF *** choose ARCHITECT or ENGINEER ***
from list in Family Types
IT IS NOT TO BE USED FOR REGULATORY APPROVAL, BIDDING, PERMIT, OR CONSTRUCTION PURPOSES.

VIEW SHED ANALYSIS

DRAWN BY	CHECKED BY
Author	Checker
PROJECT NUMBER 621010	PROJECT ABBREVIATION PH
ORIGINAL ISSUE	DATE 08 SEPTEMBER 2023

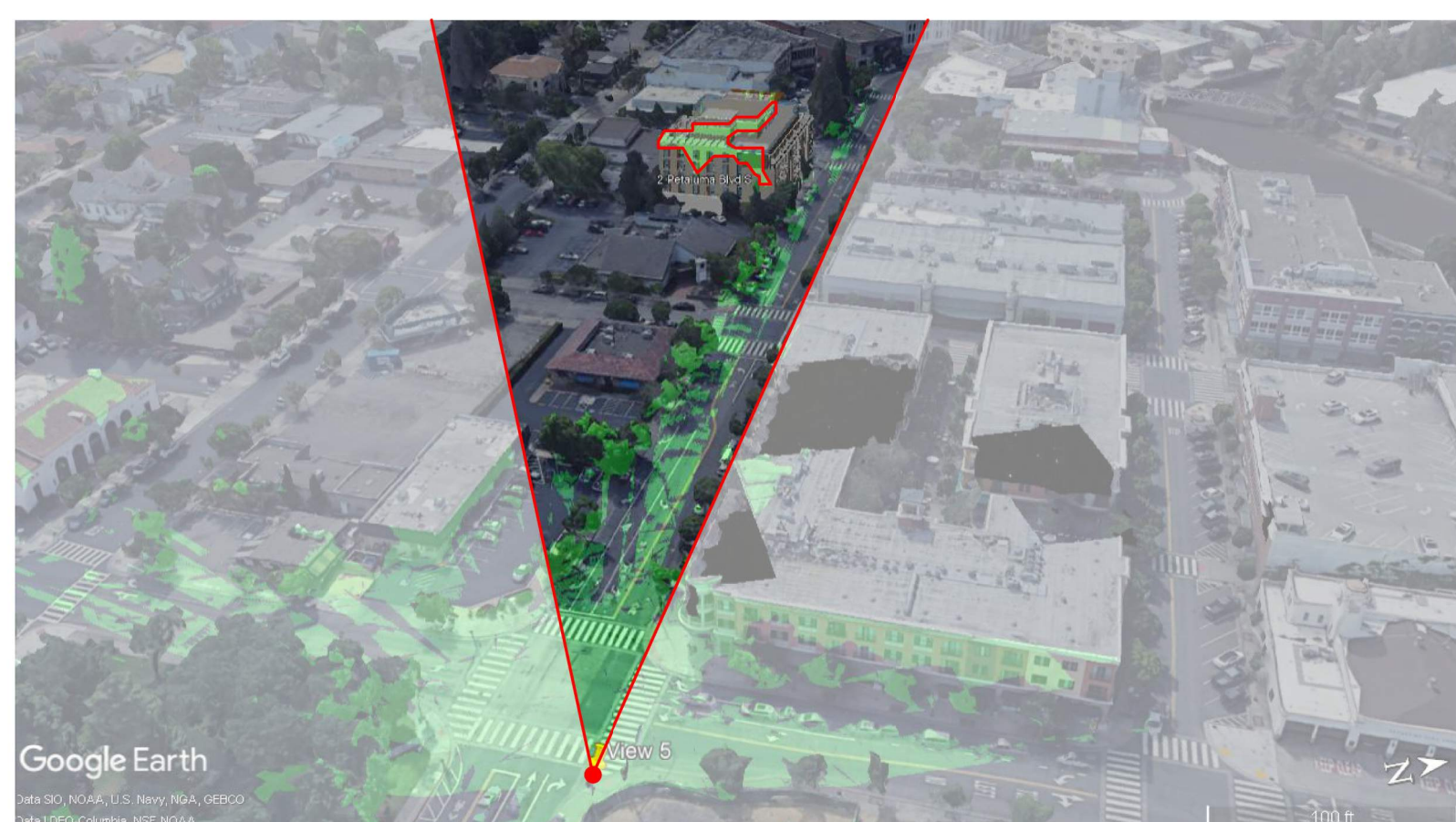
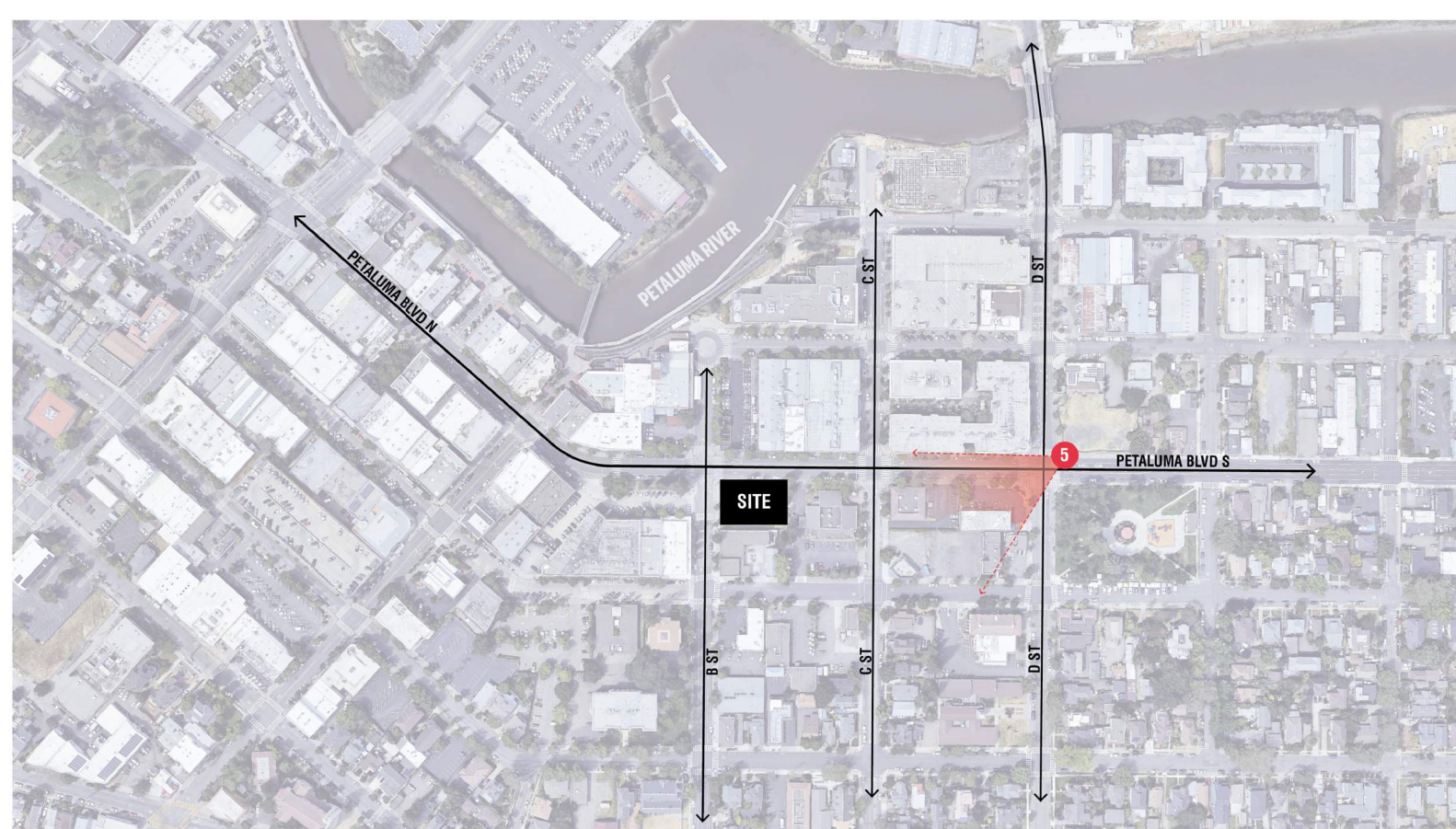
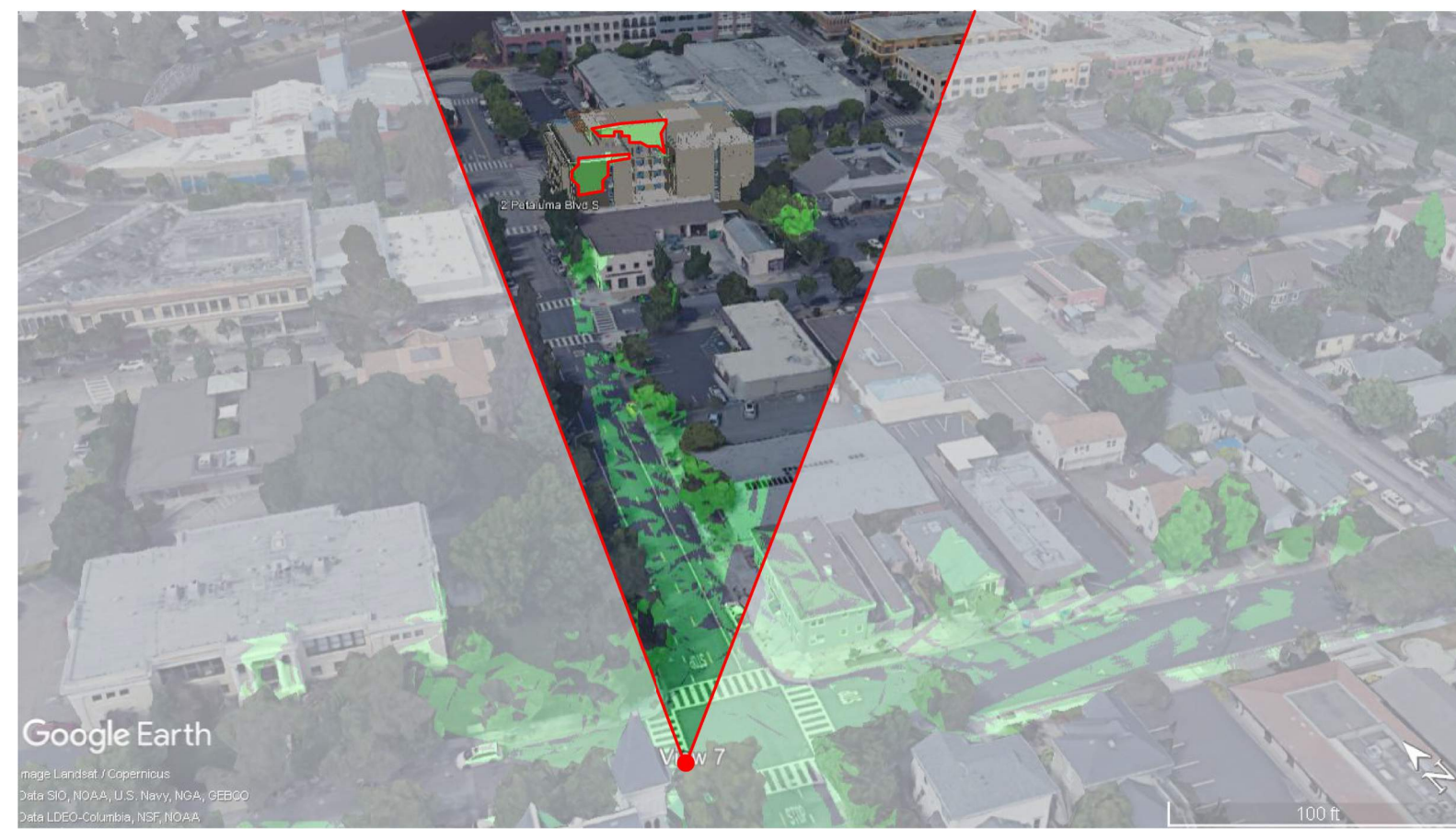
MEP INTERFACE ENGINEERING 601 South Figueroa Street Suite 2750 Los Angeles CA 90017 323 536 2362	LANDSCAPE BRIGHTVIEW DESIGN GROUP 1645 Grant Street Denver, Colorado 80203 Address Line 3 949 238 4900
STRUCTURE BUEHLER ENGINEERING 5 Third Street Suite 1125 San Francisco, CA 94103 213 694 3408	FF&E DH-COMPANIES 7591 Coppermine Drive Manassas, VA, 20109
INTERIORS SIXTEEN FIFTY 7509 Girard Ave La Jolla, CA 92037 858 454 6909	CIVIL N CONSULTING ENGINEERS 4 Park Plz Irvine, CA 92614 949 369 1161



View 8

View 6

EKN Petaluma LLC
HOTEL WEAVER
2 Petaluma Blvd South
Petaluma, California



View 7

View 5

REVISION HISTORY

REVISION	DESCRIPTION	DATE

INTERIM REVIEW
THIS DOCUMENT IS RELEASED FOR THE
PURPOSE OF INTERIM REVIEW UNDER THE
AUTHORITY OF
*** choose ARCHITECT or ENGINEER ***
from list in Family Types
IT IS NOT TO BE USED FOR REGULATORY
APPROVAL, BIDDING, PERMIT, OR
CONSTRUCTION PURPOSES.

VIEW SHED ANALYSIS

DRAWN BY	CHECKED BY
Author	Checker
PROJECT NUMBER	PROJECT ABBREVIATION
621010	PH
ORIGINAL ISSUE	DATE
	08 SEPTEMBER 2023