



Howard Street Improvement Project

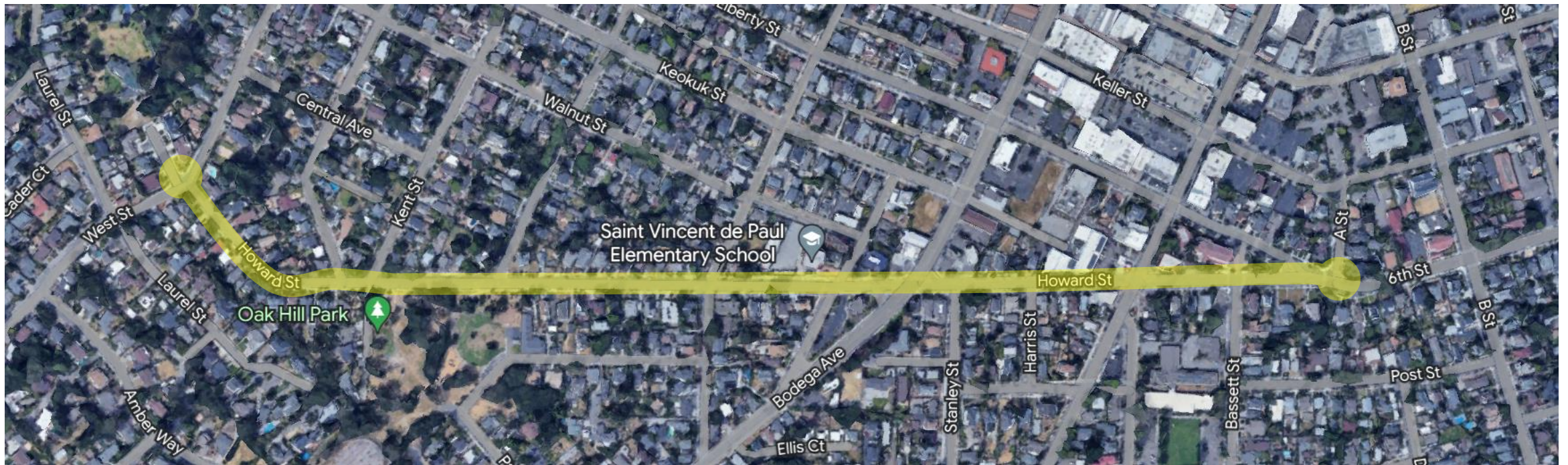
COMMUNITY WORKSHOP – SEPTEMBER 13, 2023

Agenda

- Introductions
- Project Overview
- Meeting Purpose
- Existing Conditions
- What We've Heard
- Questions & Comments
- Next Steps



Project Location: A Street – West Street



Project Overview

- **Replace undersized and aging utilities**
- **Reconstruct roadway**
- **Improve safety and accessibility**



Project Overview

- Replace undersized and aging utilities
- **Reconstruct roadway**
- Improve safety and accessibility



Project Overview

- Replace undersized and aging utilities
- Reconstruct roadway
- **Improve safety and accessibility**



Tentative Schedule



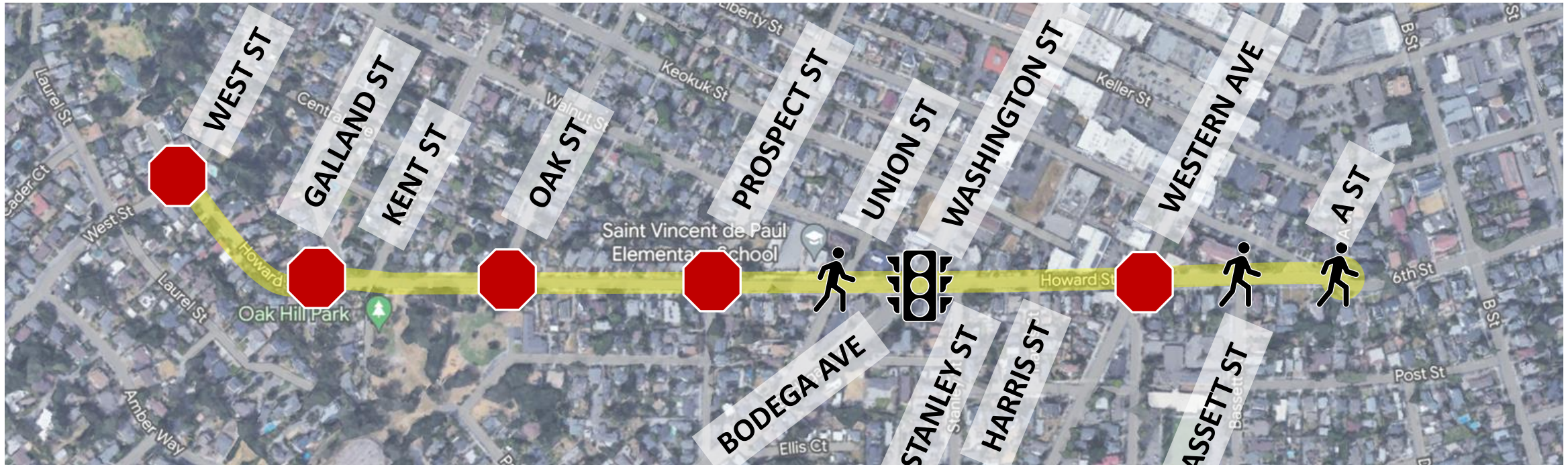
*All dates are tentative and subject to funding, design challenges, Council approvals, etc.

Meeting Purpose

- Seek your input on how we should improve Howard Street
- Start a dialogue with the community about the project and its potential scope, timing, impacts, etc.



Intersections



 Stop Sign

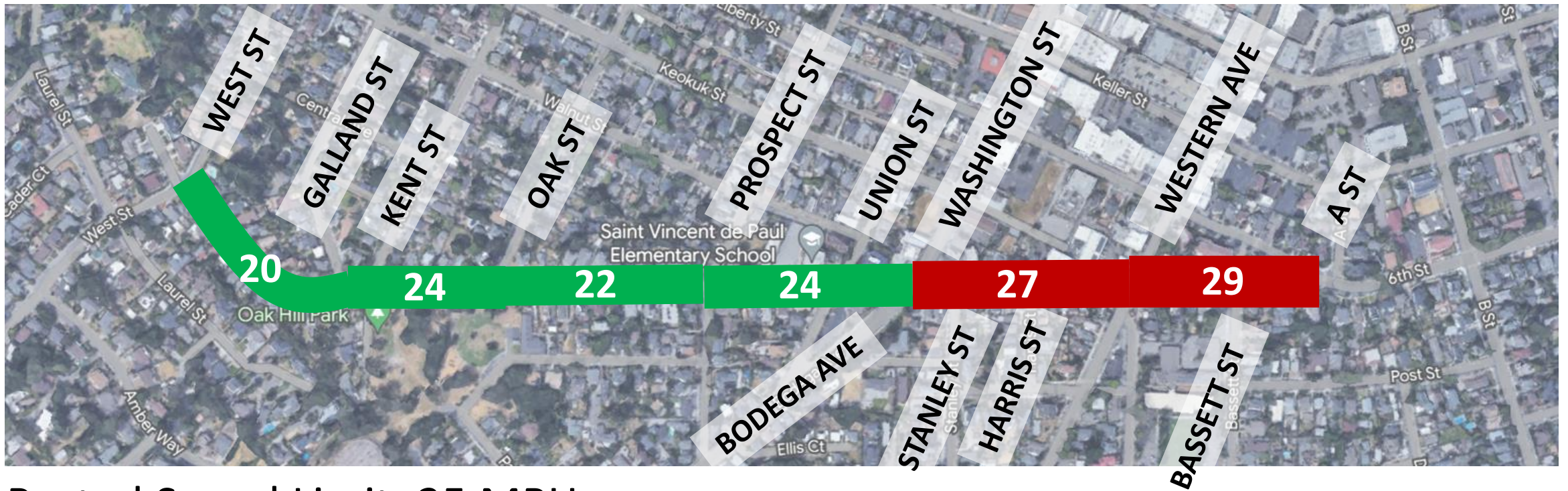
 Traffic Signal

 Crosswalk (w/o Stop or Signal)

Vehicles Per Day

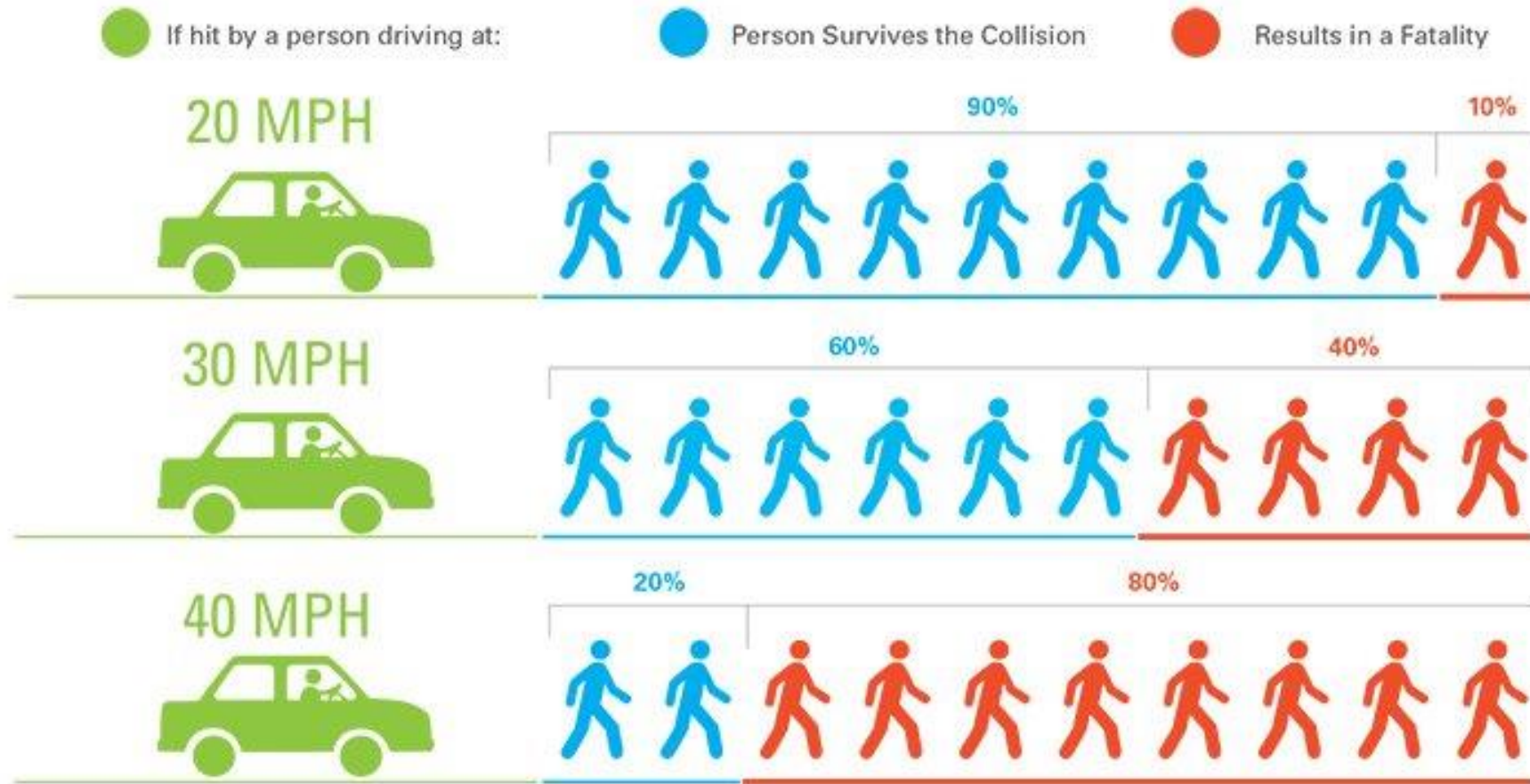


Vehicle Speeds

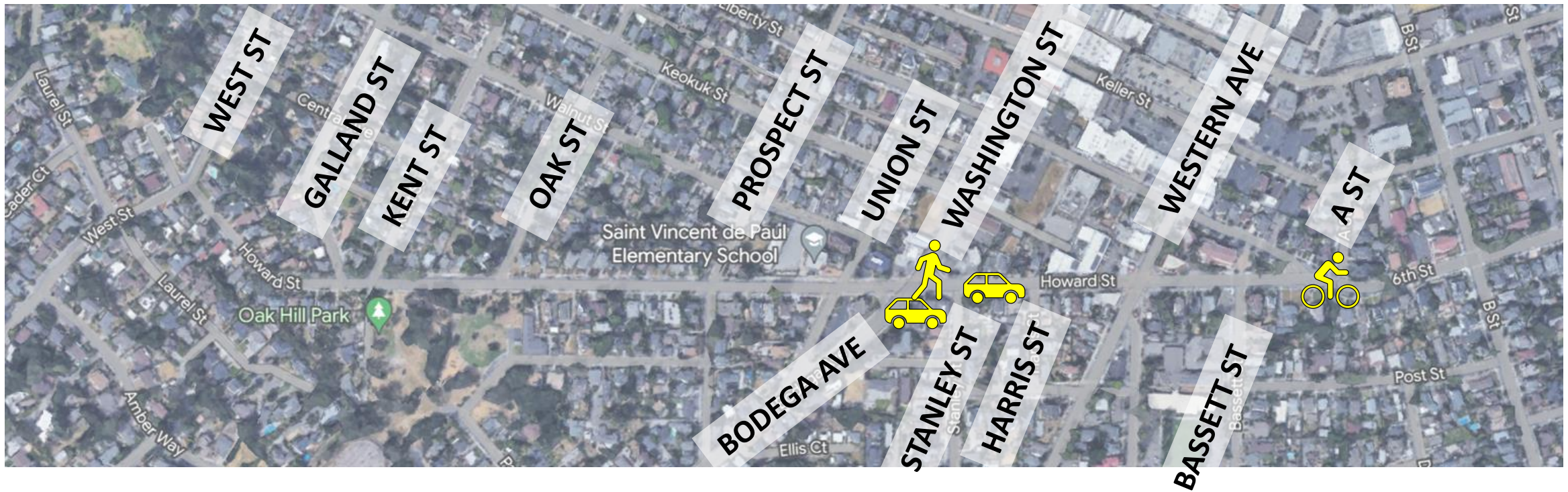


Posted Speed Limit: 25 MPH

Vehicle Speeds & Crash Severity



Reported Collisions (2018-22)



Vehicle vs. Vehicle



Vehicle vs. Pedestrian



Vehicle vs. Bicyclist

Pavement



Walking & Accessibility



Walking & Accessibility



Bicycling



Driving



What We've Heard

- Improve intersections with Bodega Ave./Washington St., Western Ave., Bassett St., and Liberty St.
- Address accessibility, walking, bicycling, and speeding throughout the corridor
- Address spillover parking and loading impacts of school, church, and Crooked Goat/ACME Burger
- Address narrow conditions (including sidewalk gaps) near West St.

Questions & Comments



Tentative Schedule



*All dates are tentative and subject to funding, design challenges, Council approvals, etc.

Safe Streets Toolbox: Crosswalk Enhancements



Safe Streets
Toolbox:
Bike Boxes



Safe Streets
Toolbox:
Leading Pedestrian
Interval



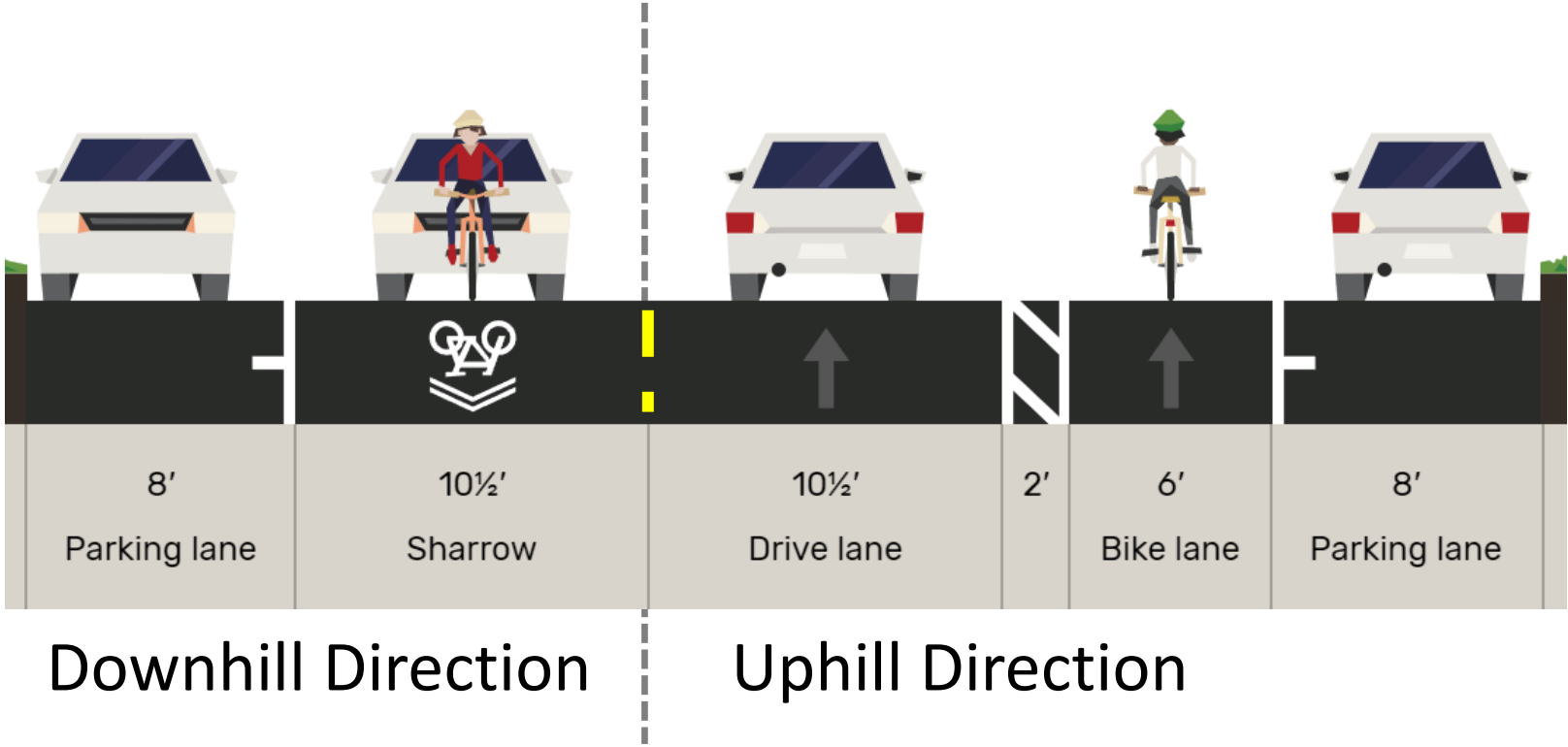
Safe Streets Toolbox: Left Turn Lane & Signal



Safe Streets
Toolbox:
Split Signal
Phase



Safe Streets
Toolbox:
Uphill Bike Lane



Safe Streets Toolbox: Traffic Calming Elements

Chicanes



Speed Cushions

Traffic Circles



Thank You!

A photograph of a residential street scene. On the left, there is a large, light-colored, two-story house with a porch. A silver car is parked in front of it. The street is paved and has a utility pole on the left side. On the right, there are several trees, including a large green tree and a tall, thin evergreen. A speed limit sign for 25 mph is visible. The sky is clear and blue. A large orange banner is overlaid on the bottom right of the image.

To learn more, take our survey, and
subscribe to updates, go to
cityofpetaluma.org/howardstreet