

# Lucchesi Skatepark Project

---

RECREATION, MUSIC, & PARKS COMMISSION

SEPTEMBER 20, 2023



# Agenda

---

- Project Overview
- Community Engagement
- Design
- Recommendation & Next Steps
- Q & A

A photograph of children at a skate park. In the foreground, a child in an orange shirt and black helmet is seen from behind, holding a skateboard. To the right, a girl in a blue shirt, dark shorts, pink knee pads, and a green helmet is riding a skateboard. In the background, another child is visible near a ramp. The scene is outdoors with trees and a clear sky.

---

# Overview

---



# Overview

---

- Project launched December 2022
- Goal: create vision for skating in Petaluma
- Community wants a new, larger skatepark (20,000+ square feet)
- Site analysis for four City parks completed February 2022
- Community, RMPC, and Council support for Lucchesi Park

# Budget

---

- Adopted Budget in FY23-24 is \$1.5m (Design for Phases 1 & 2, Construction of Phase 1)
- \$275,000 funding gap currently anticipated for Phase 2
- \$2.8m planning-level estimate for 23,000 square foot park



*Riverside Skatepark (Detroit, MI) - Designed & Constructed by Grindline*

A large group of people is seated at round tables in a well-lit room, likely a community meeting or workshop. The room has a high ceiling with recessed lighting and several exit signs. In the background, there are wooden doors and a kitchen area. The text "Community Engagement" is overlaid in a large, white, sans-serif font across the center of the image. The bottom of the image features a solid orange horizontal bar.

# Community Engagement



# Community Focus

---

- Community-driven project
- Great engagement, both in-person and online
- Received valuable feedback
- Fun getting to know our skating community better

# Community Engagement

---

Project  
Webpage

Online  
Surveys

Workshops  
x4

RMPC &  
City Council

Community  
Update

Project  
Emails

Social  
Media

Grindline  
Channels



Construct a new skatepark

Preferred location: Lucchesi Park

Multi-functional & inclusive space (all abilities; skate, scoot, BMX, etc.)

Desired amenities: shade, lighting, seating, water fountains

Technical feedback regarding skating elements

## What We've Heard

# LUCCHESI PARK



# What We Heard: Recreation, Music, & Parks Commission and City Council

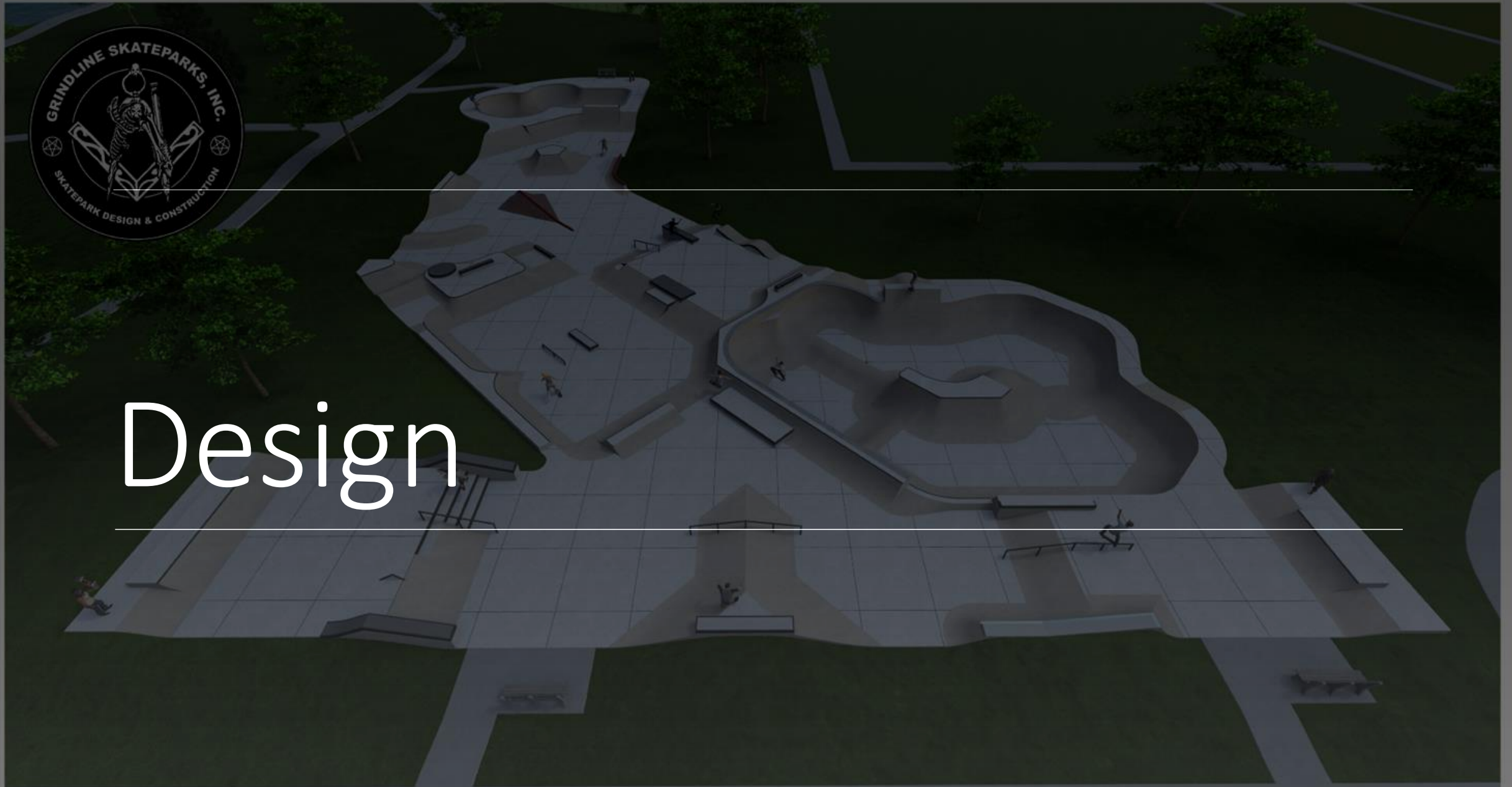
---

- Unanimous support for new skatepark at Lucchesi Park
- Preserve and incorporate existing trees where possible
- Council support for two-phase build, with first phase of 10,000-13,000 square feet





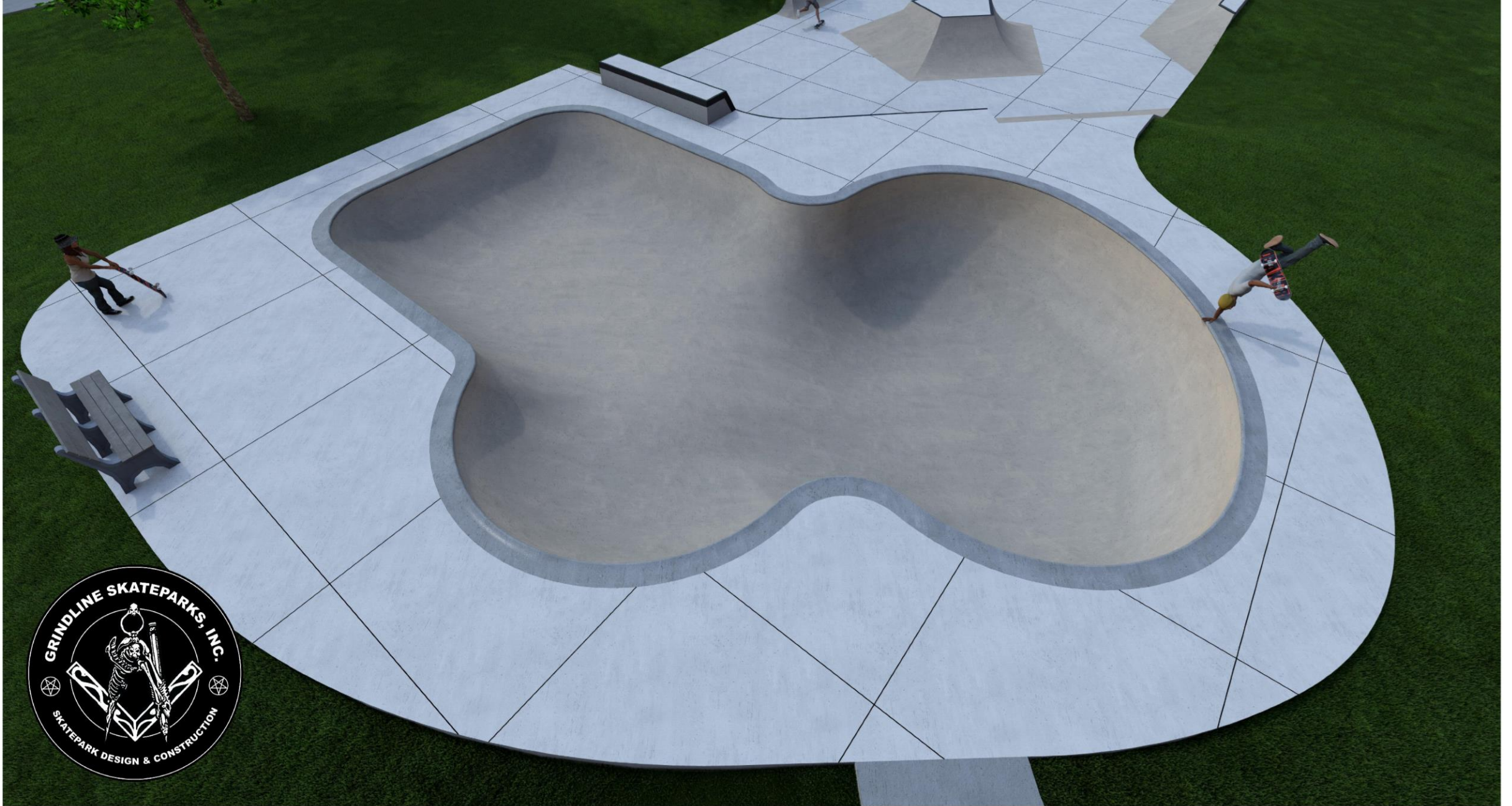
# Design



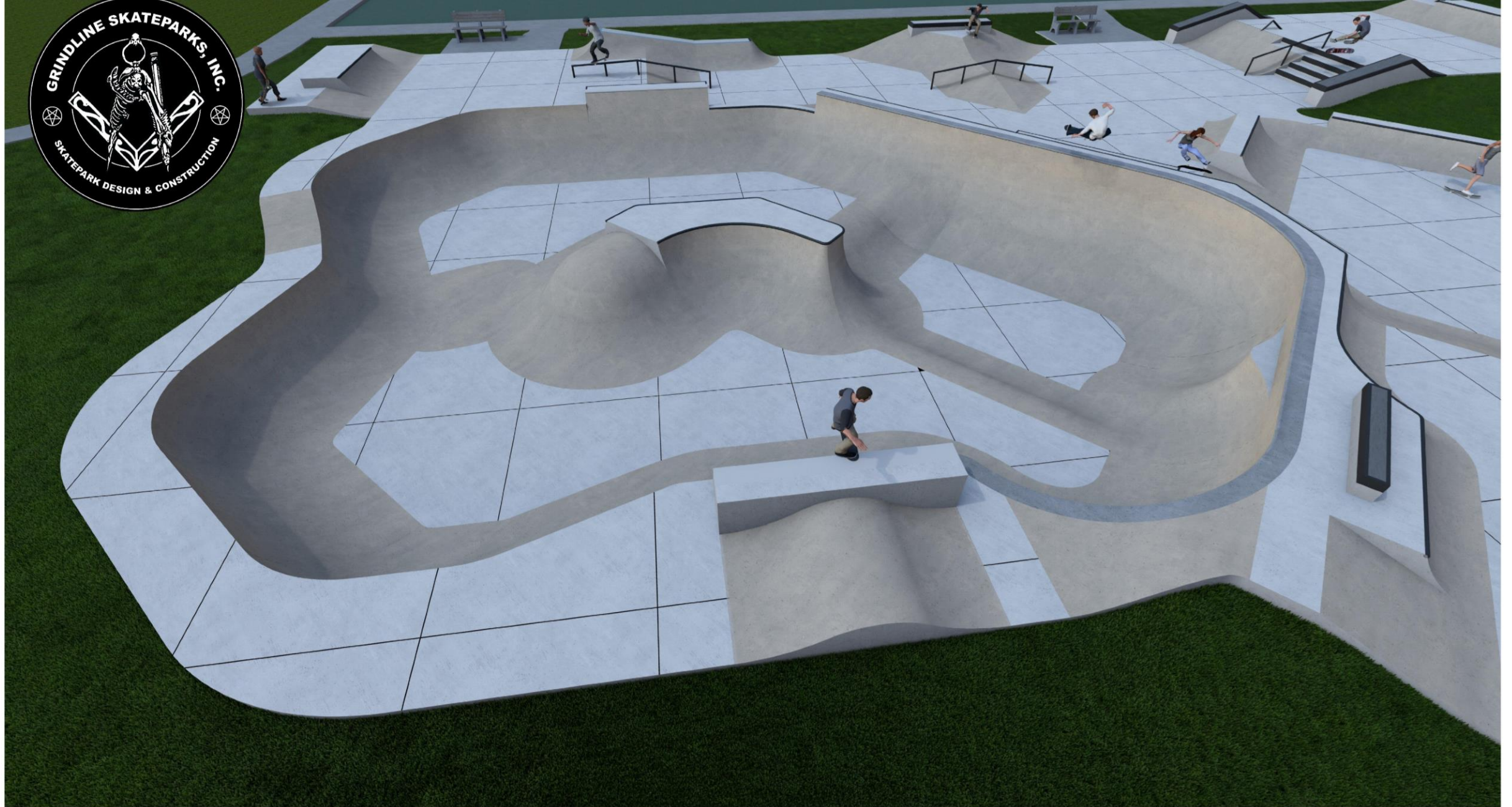










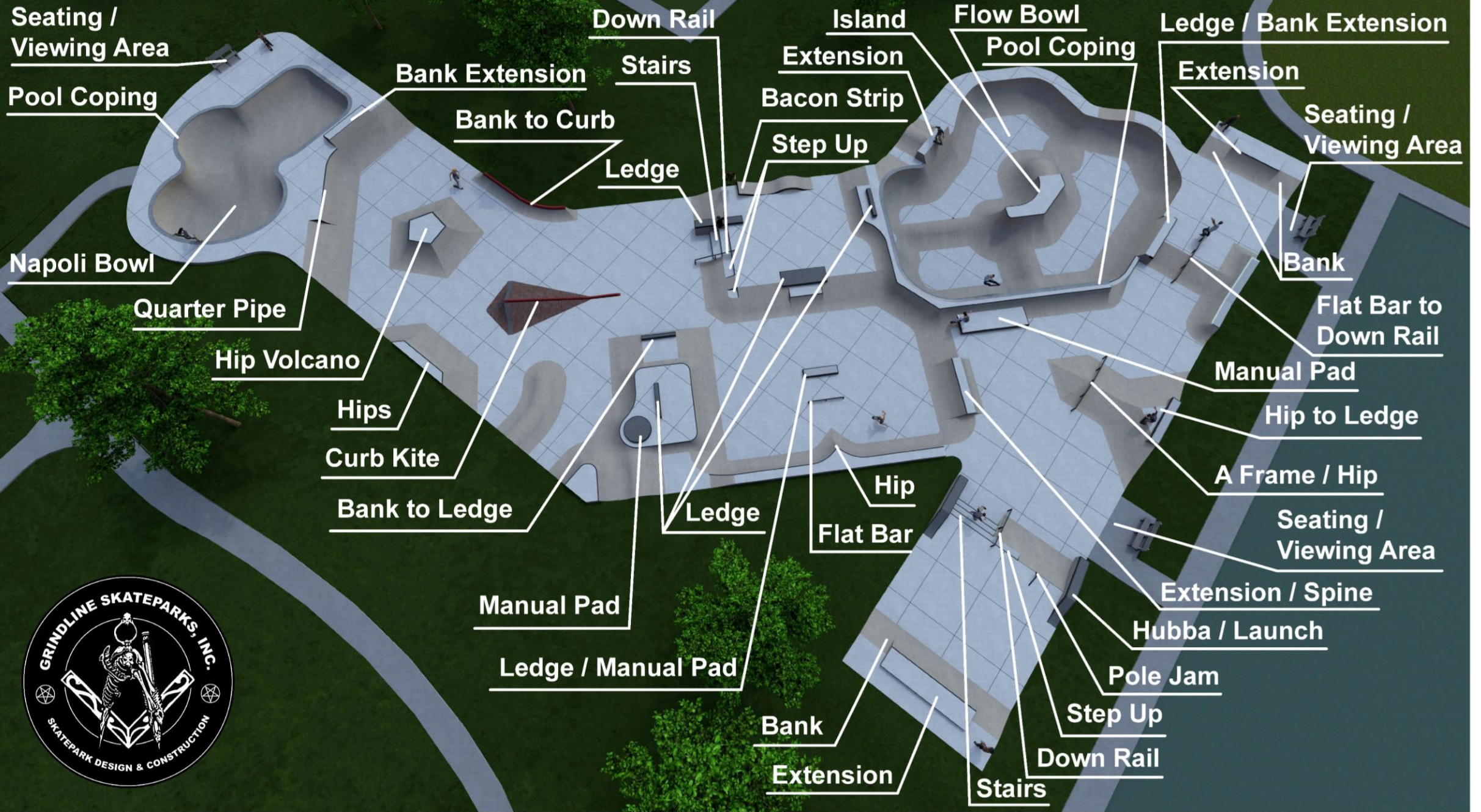




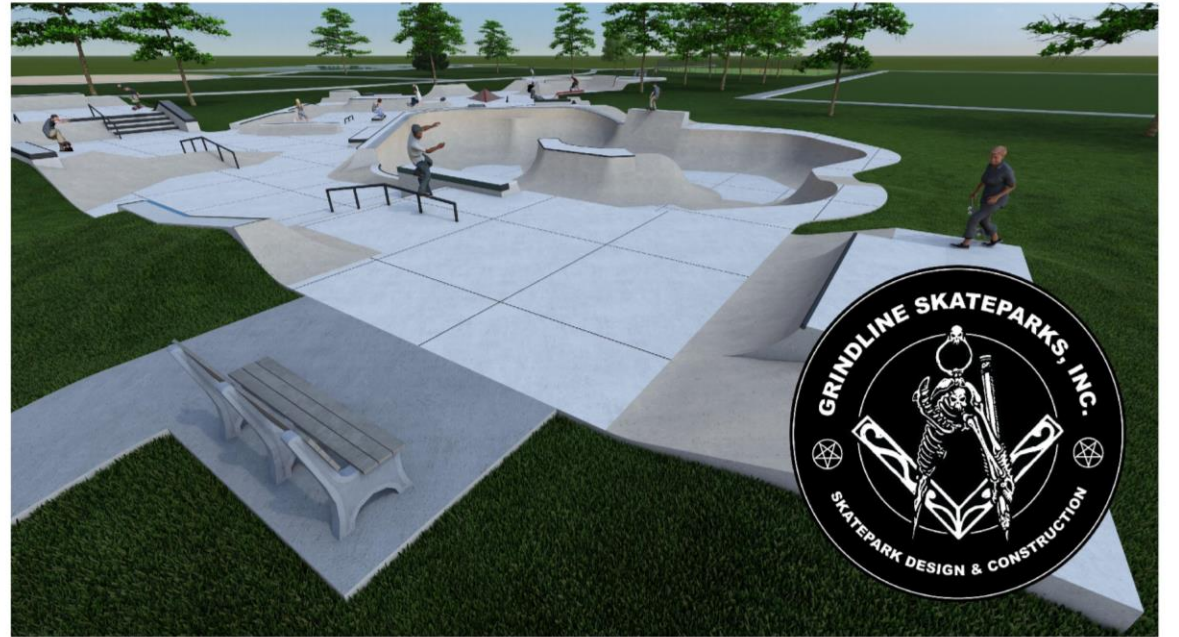
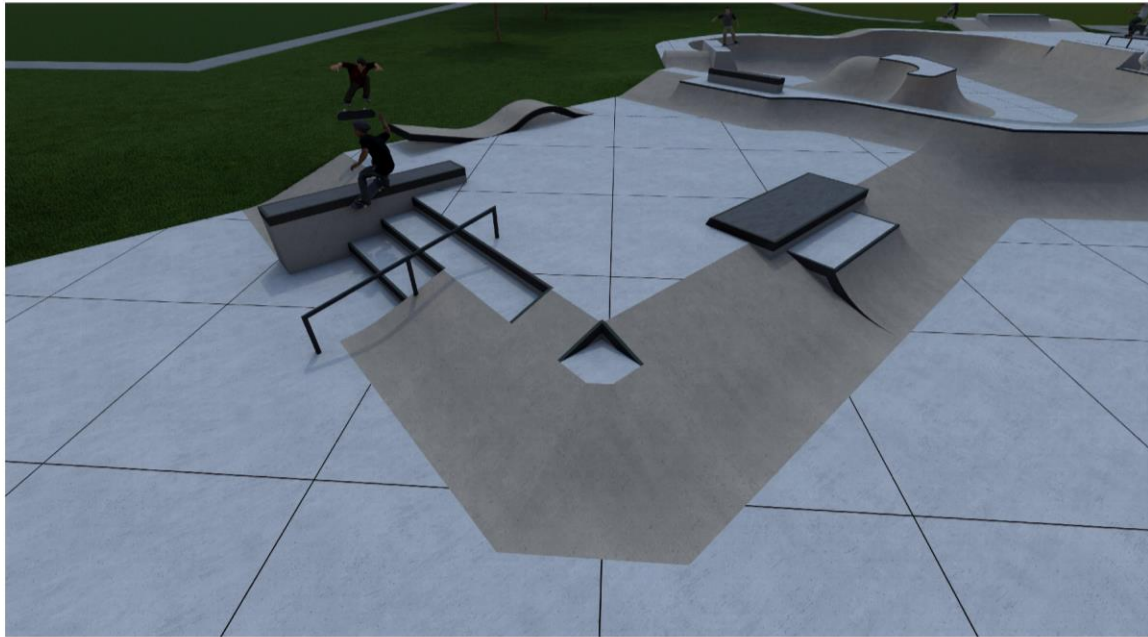
Phase 2

Phase 1











# Recommendation & Next Steps



# Recommendation

---

*Review, discuss, and adopt the Lucchesi Skatepark Concept Plan and submit a recommendation to City Council for approval.*



# Next Steps

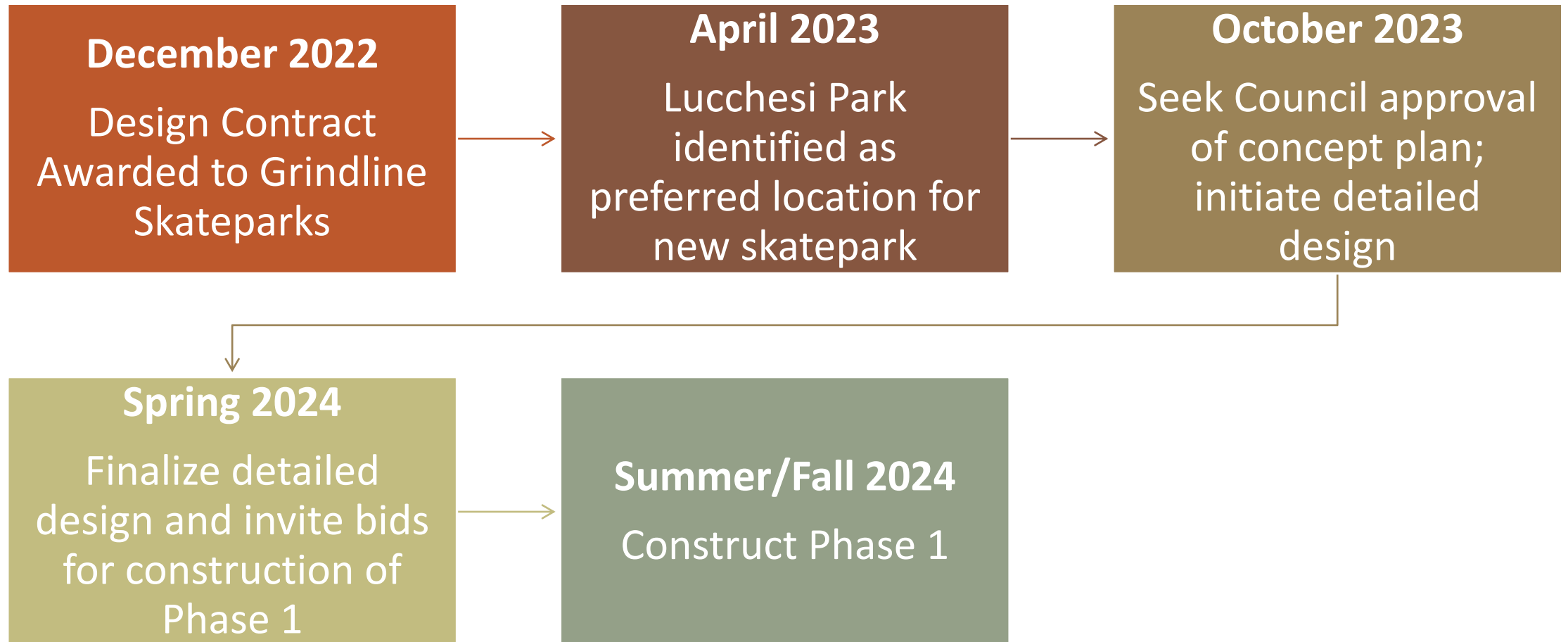
---

- Seek Council approval of concept plan
- Initiate detailed design, with goal of breaking ground on Phase 1 in Summer 2024
- Explore access improvements and upgrades to amenities at existing Petaluma Skatepark



# Process / Timeline

---



Learn More &  
Subscribe to  
Project Updates!

[cityofpetaluma.org/lucchesi-skatepark](https://cityofpetaluma.org/lucchesi-skatepark)

Bjorn Griepenburg, Project Manager

[bgriepenburg@cityofpetaluma.org](mailto:bgriepenburg@cityofpetaluma.org)