

Exhibit 5: Line-of-Sight/Section Drawings

Line-of-sight/section drawings were prepared to supplement the images provided in Exhibits 3-4 and to help illustrate the pedestrian-level view of the upper floors of new buildings allowed by the Overlay. These drawings are intended to depict the pedestrian-level view of what may be seen by a person walking along the street at ground level.

Exhibit 5.1 depicts the pedestrian-level view on Petaluma Boulevard South.

Exhibit 5.2 depicts the pedestrian-level views on Keller Street and on Kentucky Street.

In each view, the benefit of the upper floor setbacks is shown, in that the view of the upper floors allowed by the Overlay is reduced or not available at the pedestrian-level view. The available view of the upper floors allowed by the Overlay is also diminished by the horizontal and vertical distance based on the principle that objects that are closer appear larger to the human eye and objects that are further away appear smaller.

Exhibit 5.1: Section/Line-of-Sight – Petaluma Boulevard South

This section drawing/line-of-sight analysis depicts the potential building form allowed by the Overlay for a 75-foot-tall building. With the upper floor stepbacks, the enclosed portions of the building above 45-feet are less visible to pedestrians using the sidewalk on the east side of Petaluma Boulevard South.

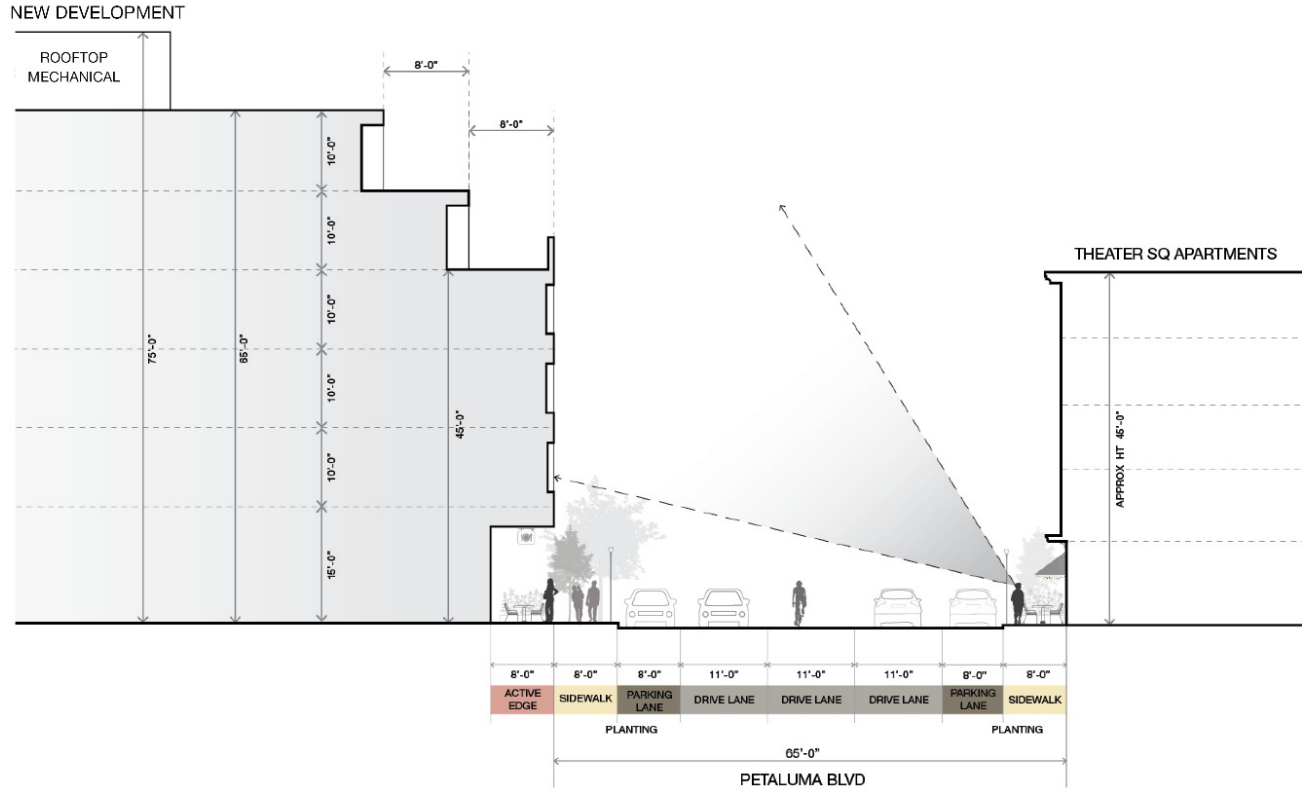


Exhibit 5.2: Section/Line-of-Sight – Keller and Kentucky Streets

This section drawing/line-of-sight analysis depicts the potential building form allowed by the Overlay for a 75-foot-tall building. With the upper floor setbacks, the enclosed portions of the building above 45-feet are less visible to pedestrians using the sidewalk on Keller Street and not visible to pedestrians using the sidewalk on Kentucky Street.

