

# Petaluma Public Safety Facilities Master Plan

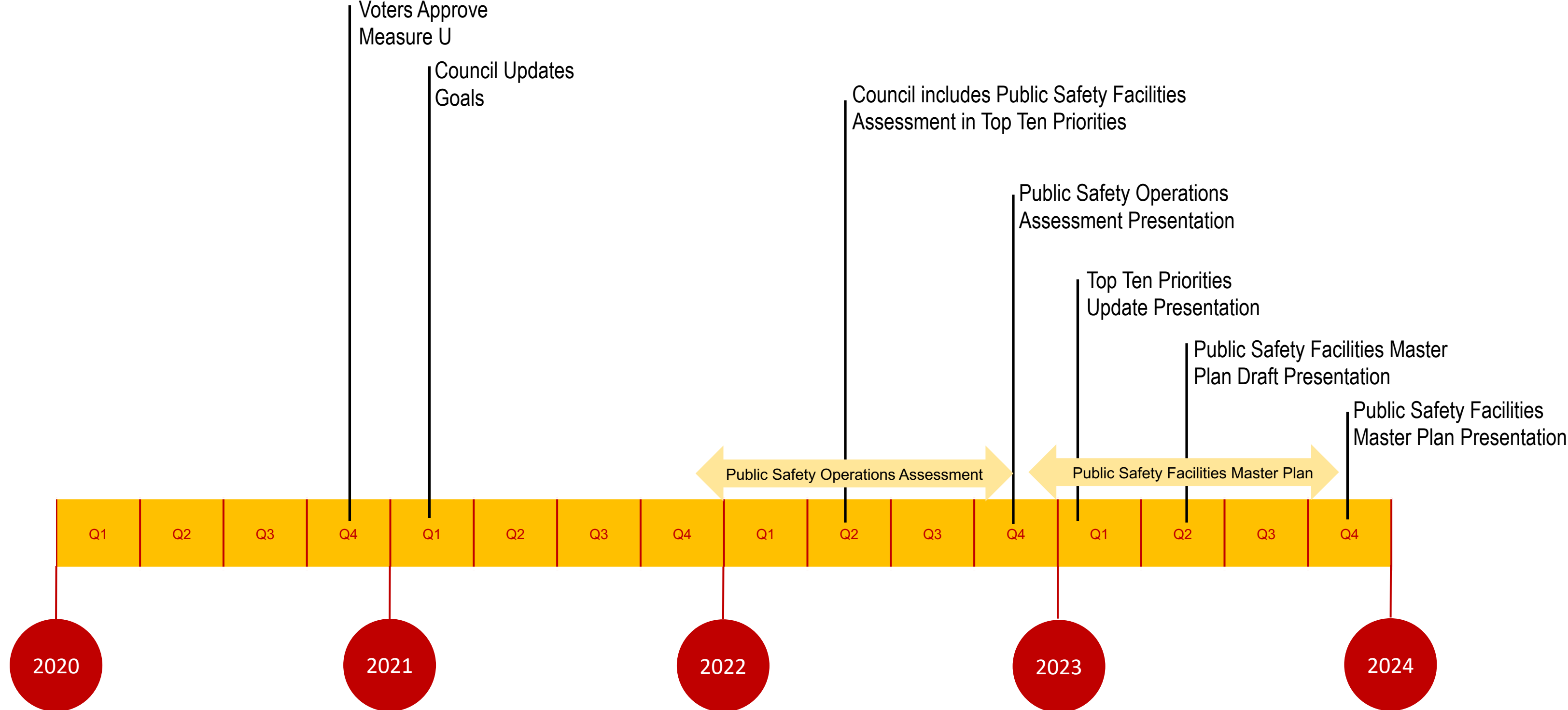
## City of Petaluma

## City Council Presentation November 20<sup>th</sup>, 2023

### Agenda

1. Background
2. Master Plan Overview
3. City Council July 2023 Meeting Comments
4. Update
5. Status and Next Steps

# Public Safety Facilities Planning Background



# Master Plan Overview

## Immediate

- Fire Station 1 seismic strengthening and all gender restroom
- Police Station locker/restroom/fitness and office modifications

## Short-Range

- New Central Fire Headquarters & Emergency Operations Center

## Mid-Range

- Fire Station 1 renovation or replacement

## Long-Range

- New Police Station
- Fire Station 2 renovation or replacement
- Fire Station 3 renovation or replacement
- New Public Safety Support Building

# City Council July 2023 Comments

## New Public Safety Facility

- Confirm specific location at the Fairgrounds
- Show Phase 2 Police Station
- Confirm Collocation Efficiencies
- Refine Emergency Operations Center (EOC) scope and cost
- Consider 2-3 story buildings to reduce footprint

# New Public Safety Facility Location

Location at Johnson and Kenilworth intersection recommended because:

- Synergistic with nearby community services and easy to integrate with area master planning
- Least impact on current uses
- Good emergency response access
- Fosters collaboration with planned resiliency center

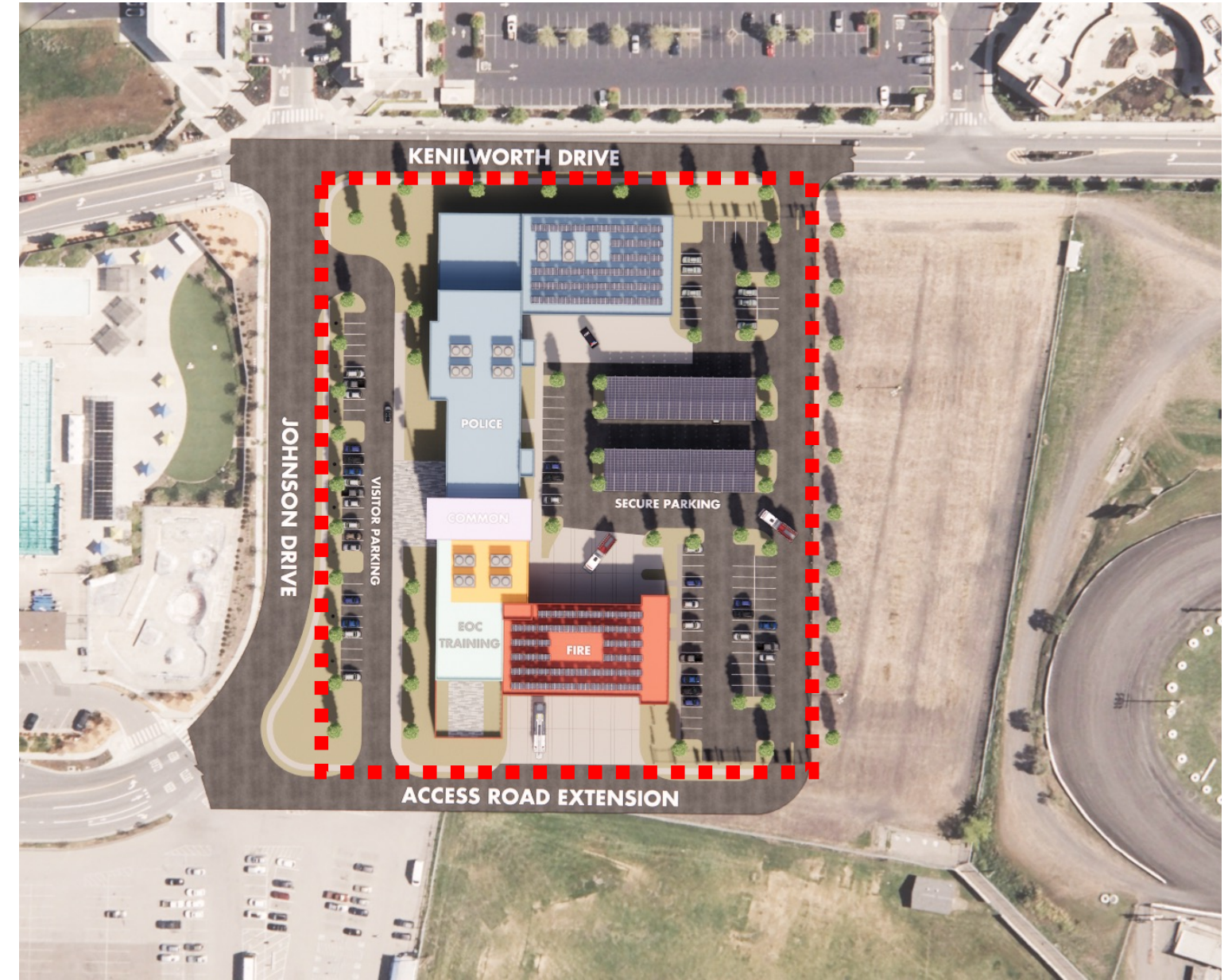


# New Public Safety Facility Location

Location at Johnson and Kenilworth intersection



*Existing*



*New Public Safety Facility*

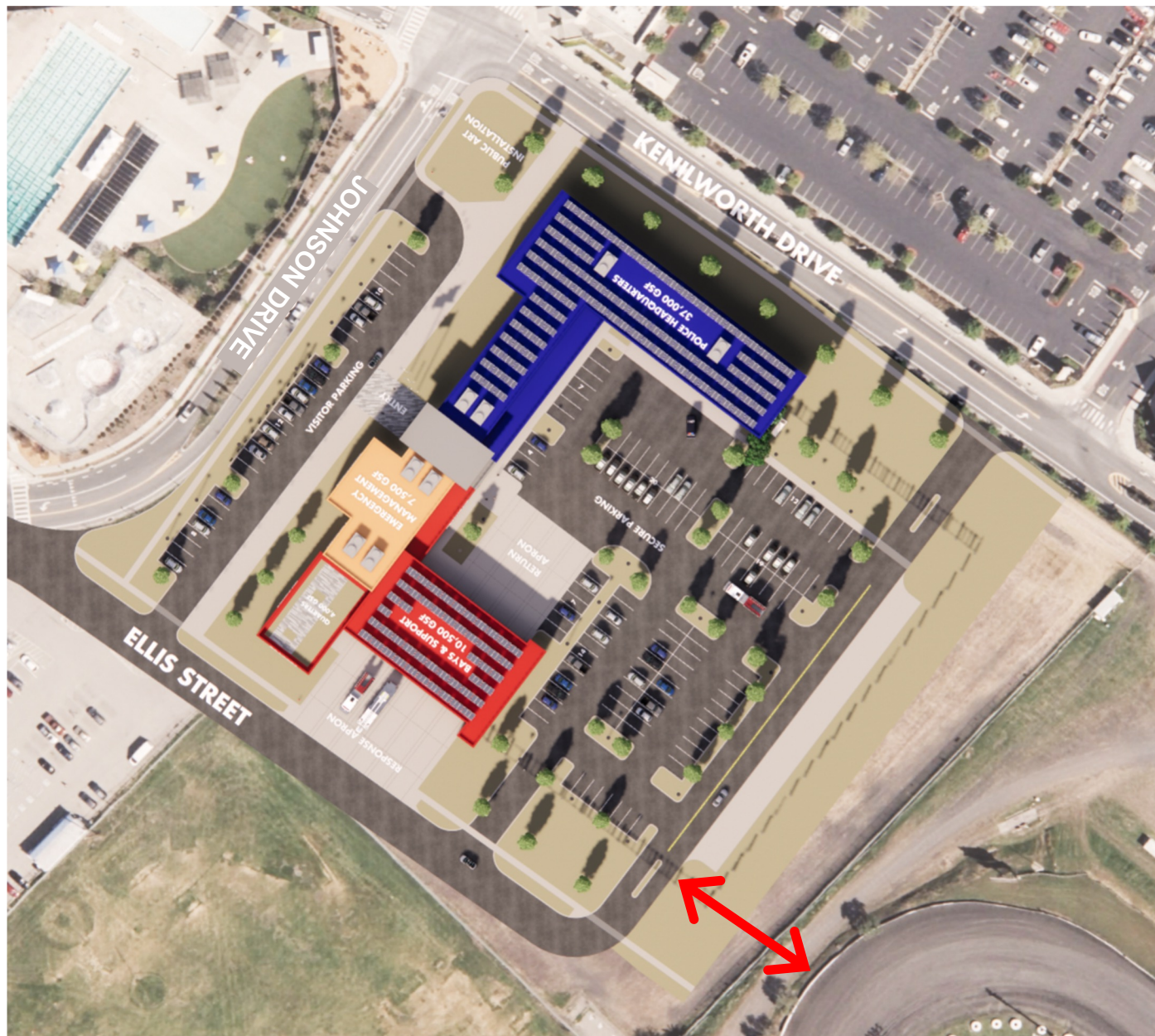
# New Public Safety Facility Location

Location, with intersection improvements at Johnson Drive, provides quick access to major arterial road network for emergency response.



# New Public Safety Facility Reduced Footprint

To reduce facility footprint, functions that do not need to be on the first floor were moved to the second floor and the site consolidated.



*Original Layout*



*Revised More Compact Layout*



# New Public Safety Facility Reduced Footprint



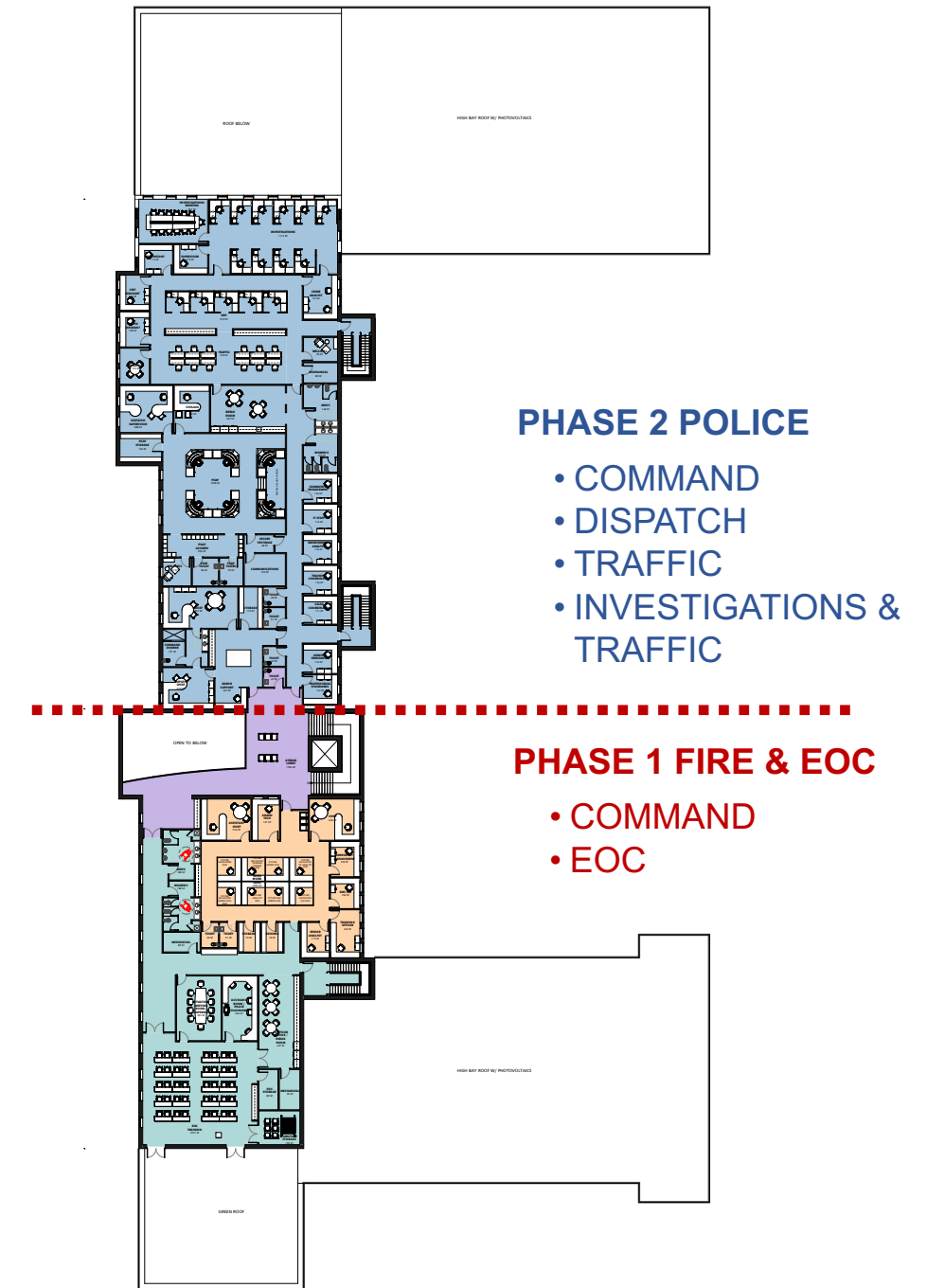
First Floor Test Fit

## PHASE 2 POLICE

- RECORDS & PROPERTY
- PATROL, LOCKERS & GYM
- RAPID RESPONSE

## PHASE 1 FIRE & EOC

- SHARED LOBBY
- APPARATUS BAYS
- LIVING QUARTERS



## PHASE 2 POLICE

- COMMAND
- DISPATCH
- TRAFFIC
- INVESTIGATIONS & TRAFFIC

## PHASE 1 FIRE & EOC

- COMMAND
- EOC

Second Floor Test Fit

# New Public Safety Facility



# New Public Safety Facility



# New Public Safety Facility



# Preliminary Schedule & Estimated Costs

<b>Project</b>	<b>Size</b>	<b>Date</b>	<b>Construction Cost*</b>
<b>Fire Station 1 Improvements</b>	9,600 sf	2023-25	\$2.6 M
<b>Police Station Improvements</b>	11,000 sf	2023-25	\$5.2 M
<b>New Fire HQ &amp; EOC</b>	24,500 sf	2023-28	\$38.3 M
<b>Fire Station 1</b>	10,000 sf	TBD	TBD
<b>New Police Station</b>	40,000 sf	TBD	TBD
<b>Fire Station 2</b>	14,300 sf	TBD	TBD
<b>Fire Station 3</b>	12,200 sf	TBD	TBD
<b>Public Safety Support Building</b>	17,500 sf	TBD	TBD

\* Estimated construction costs escalation, but not management, entitlements, design, and FF&E soft costs

# Status & Next Steps

## Police, Fire, and Emergency Management Facility Planning

- Operations and Needs Assessments complete
- Facilities Master Plan and Programming complete

## Fire Station 1 and Police Station Improvements

- Starting design soon for construction in 2025

## New Fire Headquarters & Emergency Operations Center

- Start work on Entitlements
- Develop RFP for Design
- Determine Bond Issuance Date