



★
PETALUMA

SONOMA COUNTY
CALIFORNIA-USA

HOW WE SERVE
PETALUMA POLICING TODAY



HELLO PETALUMA

My name is Ken Savano and I am proud to lead the men and women of your Petaluma Police Department (PPD) who serve you here in this historic community. My history in Petaluma began in 1970 where I grew up on Caulfield Lane when it was only two lanes. I began my public safety career as a police volunteer while still in high school. I joined the Department in 1994 and over the last 26 years I have been grateful and honored to live and work in a community where people genuinely look out for one another.

As guardians of this city for 162 years, your Police Department has always strived to reflect the values of professionalism, leadership, teamwork, organizational excellence, community, and a winning attitude. As public servants we fulfill our duties with procedural justice, focused on strengthening trust and confidence within our community by giving everyone VOICE, being NEUTRAL, treating everyone with DIGNITY and RESPECT, being TRUSTWORTHY, and having the GOODWILL of others in mind before ourselves.

We are committed to always improving our services and policing practices. During this crucial period in history, systemic issues of injustice and inequality have resulted in a loud and clear call to action from those we serve. We are listening and we welcome the opportunity to do and be better.

In the spirit of collaboration, we want to share who we are, how we serve our community, improve our policing practices, and uphold our standards of excellence to maintain your trust.

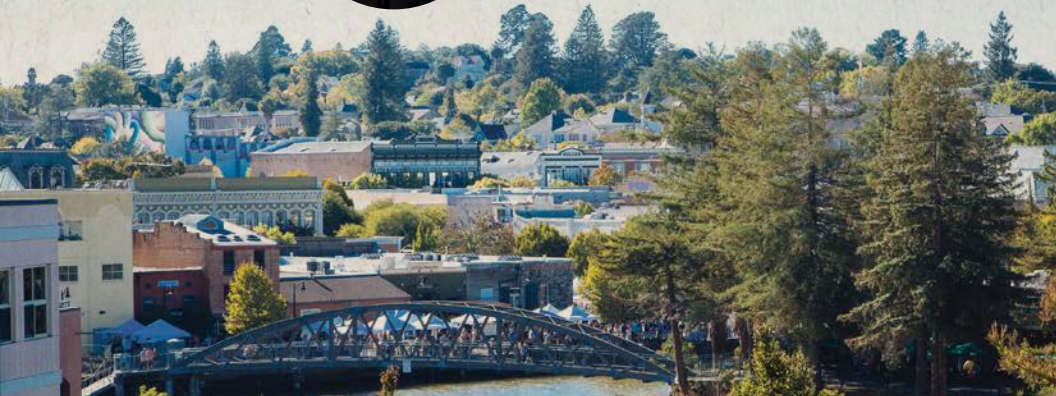
Thank you for choosing Petaluma! If my staff or I can be of further service to you, please call on us.



Respectfully,

Ken Savano

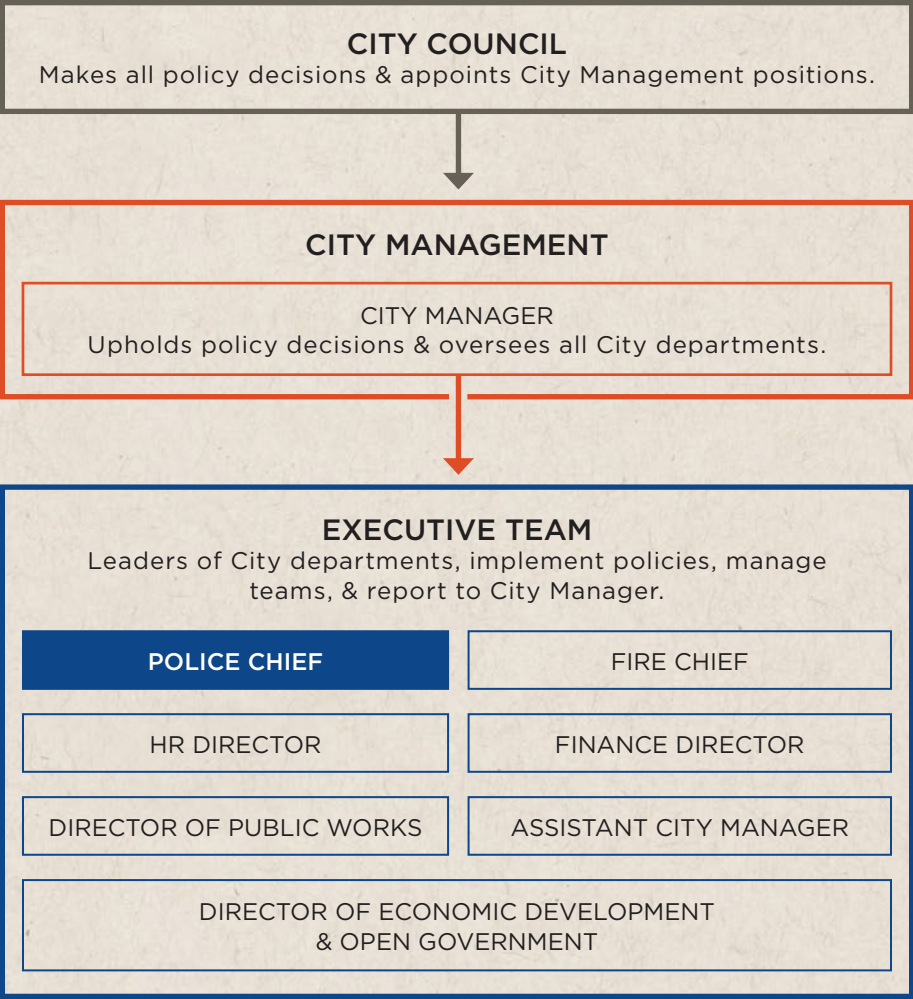
Ken Savano, Police Chief
ksavano@cityofpetaluma.org
Office: 707-778-4370





OVERSIGHT & ACCOUNTABILITY

The Police Department is one of 8 departments governed by the City Council and City Manager.



NOTE: IN THE RARE EVENT OF EMPLOYEE MISCONDUCT, THE PPD COORDINATE WITH THE CITY’S HUMAN RESOURCES DEPARTMENT AND THE CITY ATTORNEY’S TO ADDRESS DISCIPLINARY DECISIONS. BOTH ENTITIES ARE COMPLETELY INDEPENDENT OF THE PPD, NON-POLITICAL, AND NON-PARTISAN.



OUR PLEDGE

On June 3, 2020, President Obama called on Mayors to “take the pledge” to address police use of force policies in their cities. This can be found at www.obama.org/mayor-pledge. Petaluma Mayor Teresa Barrett signed President Obama’s commitment to action on police use of force.

As a City we have committed to **REVIEW** our police use of force policies, **ENGAGE** our community by including a diverse range of input, experiences, and stories in our review, **REPORT** the findings of our review to our community and seek feedback, and **REFORM** our use of force policies.

OUR USE OF FORCE POLICIES

We have fully implemented the 8 recommendations (aka 8 Can’t Wait) drawn from and Human Rights. We continue to conduct regular reviews to find ways we can co



DUTY TO INTERVENE: Officers who observe another officer using an unreasonable degree of force are trained and required to intercede and promptly report it to a supervisor.



BAN OF CHOKEHOLDS & STRANGLEHOLDS: The carotid restraint, also referred to as a chokehold, has been eliminated permanently from our use of force policy effective June 9, 2020.



REQUIRE DE-ESCALATION: All PPD officers are trained in de-escalation techniques to reduce the likelihood of use-of-force encounters. Our officers are expected to utilize these techniques whenever possible.



EVALUATE ALL REASONABLE ALTERNATIVES: Our officers are trained to consider the totality of circumstances and to evaluate the use of other reasonably available resources and techniques when determining whether to use deadly force.



Obama's 2015 Police Use of Force Project and The Leadership Conference on Civil Rights continue to do better.



BAN SHOOTING AT MOVING VEHICLES: An officer should only discharge a firearm at a moving vehicle or its occupants when there are no other reasonable means available to avert the threat of the vehicle, or if deadly force is directed at the officer or others.



USE OF FORCE CONTINUUM: Officers are required to choose the appropriate level of force that reasonably appears necessary based on the situation.



COMPREHENSIVE REPORTING: Officers are required to report the use of force immediately to a supervisor and to promptly document the nature of the incident. Supervisors then conduct a review which includes viewing all body worn camera video.

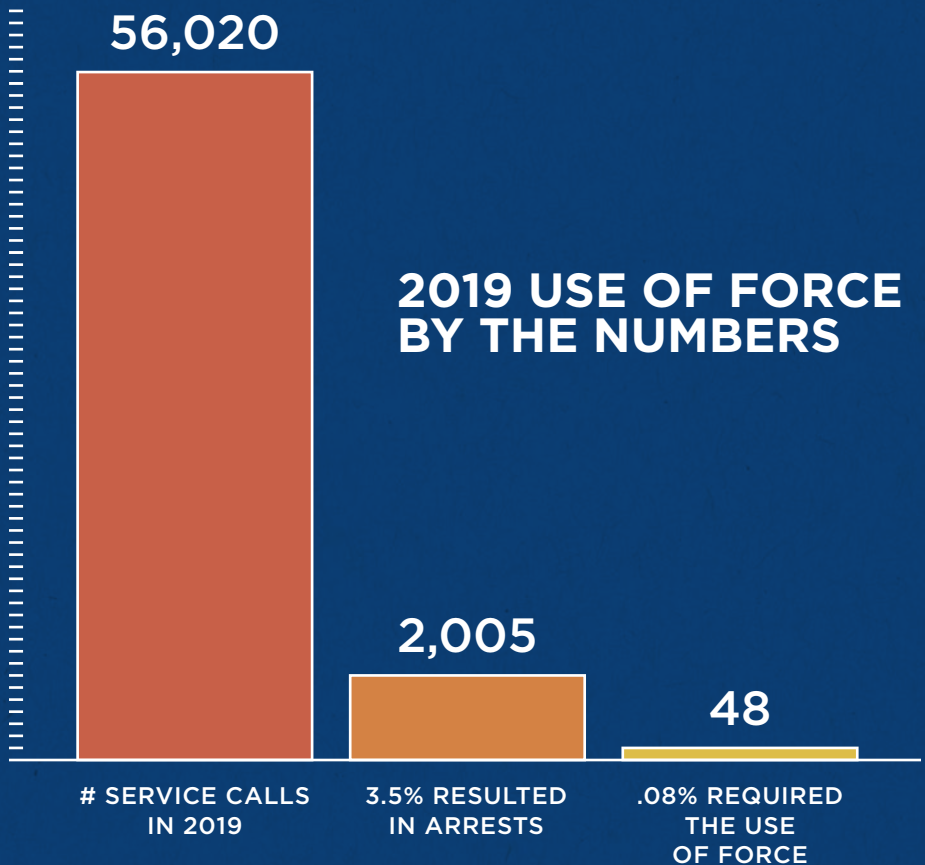


REQUIRE WARNING: Prior to any use of force, our officers are trained to identify themselves as peace officers and to give a verbal warning that force may be used. Officers are trained to make every effort to peacefully resolve situations without having to use force.



DE-ESCALATION TRAINING

Our officers learn critical de-escalation tactics through extensive crisis intervention training related to racial profiling, hate crimes, domestic violence, mental health, homelessness, immigration and biased-based policing. This training greatly reduces the need for use of force when responding to calls. Prior to use of force, our officers identify themselves and give verbal warnings to make every effort to peacefully resolve situations.



To learn more about how use of force is reported and defined, please visit: openjustice.doj.ca.gov/data



PARTNERSHIPS FOR A SAFE & HEALTHY PETALUMA

Working with our community partners we keep Petaluma safe and healthy for everyone. We understand most issues are not police issues, they are community issues that need community resources. We work closely with and support the following service providers who help us serve you.:

- **Sonoma County Behavioral Health Department, Mobile Support Team**
Sonomacounty.ca.gov/Health/Behavioral-Health
- **Social Advocates for Youth**
Saysc.org
- **Petaluma People Services Center**
Petalumapeople.org
- **COTS**
Cots.org
- **The Polly Klaas Foundation**
Pollyklaas.org
- **Verity**
Ourverity.org
- **Petaluma Health Care District**
Phcd.org



OUR COMMITMENT TO JUSTICE

We are committed to safety, peace, and equality for all community members. Through procedural justice we understand the importance of our relationship with those we serve.

In 2015, we adopted and implemented the principles and best practices from Former President Barack Obama's *Task Force Report on 21st Century Policing*. The Report focused on six pillars:

- Building Trust & Legitimacy
- Policy & Oversight
- Technology & Social Media
- Community Policing & Crime Reduction
- Training & Education
- Officer Safety & Wellness

OUR COMMITMENT IN ACTION

- We immediately provided the Report to our entire staff and we have used it as a guiding document as we consider changes in how we provide our public safety services and function as an organization.
- This Report, which includes *Procedural Justice and Police Legitimacy*, is used for all supervisory and command level promotions.
- This Report has widely been viewed as a recipe for police leaders and elected officials everywhere to consider for police reform, and I am proud to say we have adopted all of the recommendations that would apply to our Department.



CONNECT WITH US

CITYOFPETALUMA.ORG/POLICE
969 PETALUMA BLVD. NORTH, PETALUMA, CA 94952
707-778-4372
@PETALUMAPOLICEDEPARTMENT

