

Remember...

- ◆ What we do on land affects the quality of our waterways
- ◆ Many small sources of pollution add up to cause big water quality problems
- ◆ Natural things such as soil, leaves, grass clippings, and pet waste can cause water pollution
- ◆ Waste dumped into storm sewers goes into our streams and Sinclair Inlet without treatment
- ◆ Automobiles and other vehicles cause water pollution as well as air pollution

*Everyone
can
make
a difference !*

Puget Sound
Starts Here

REPORT ILLEGAL DUMPING OR SUSPICIOUS DISCHARGES:

**Water Pollution Hotline
(360) 337-5777**



RECYCLE USED MOTOR OIL, ANTIFREEZE, AND BATTERIES AT:

Olympic View Transfer Station
9300 SW Barney White Rd., Port Orchard
360-674-2297

RECYCLE USED MOTOR OIL, ANTIFREEZE, & BATTERIES, AND DISCARD HOUSEHOLD CLEANSERS, PESTICIDES, WEED KILLERS, PAINTS, & SOLVENTS AT:

Kitsap County Household Hazardous
Waste (HHW) Collection Facility
5551 SW Imperial Way, Port Orchard
360-337-5777 www.kitsapgov.com/sw



**City of Port Orchard
Public Works Department**

216 Prospect Street
Port Orchard, WA 98366
Phone: 360-876-4991
www.cityofportorchard.us

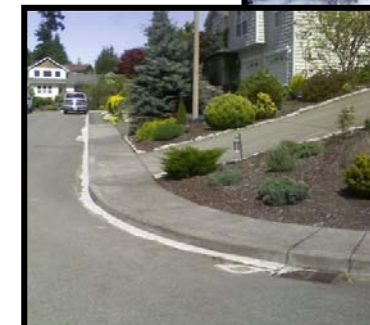
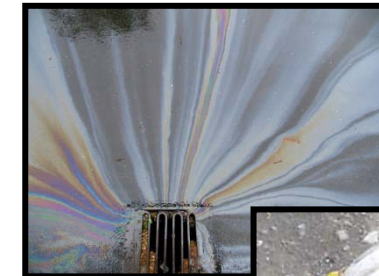
CITY
OF
PORT ORCHARD



**THE DRAIN
IS JUST FOR RAIN.....**

Puget Sound Starts Here

Illicit Discharge Detection & Elimination
Port Orchard Municipal Code 15.30
Ordinance 019-09



What is an Illicit Discharge?

An illicit discharge is defined as “any discharge into a municipal storm sewer system that is not composed entirely of stormwater.” A municipal storm sewer includes pipes, drains, catch basins, ditches, ponds, streams, and bays.

Some of the pollutants that are considered to be illicit discharges are:

- Car wash wastewater
- Gas, anti-freeze, & motor oil
- Grass clippings & yard waste
- Household cleansers
- Paints
- Pesticides
- Solvents
- Weed killers
- Trash / debris
- Pet waste

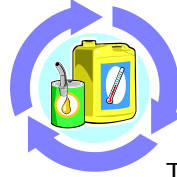


Sometimes these pollutants are carried through the storm drainage system by rain, wind, or improper disposal and enter into our streams and Sinclair Inlet. This can result in serious water quality problems and can impact the health of humans, wildlife, fish, and other aquatic organisms. Illicit discharges are prohibited by the Port Orchard Municipal Code and fines and penalties may be assessed for violations.

There are simple steps that can be taken to help keep our waterways clean.....

YOU CAN HELP !

Five Easy Ways You Can Help Keep Illicit Discharges Out of Our Streams & Sinclair Inlet



1 Used motor oil, antifreeze, and batteries can be recycled (motor oil must be uncontaminated).

Take them to the Olympic View

Transfer Station or find other facilities at:

www.kitsapgov.com/sw/recycle.asp

Clean up any spills immediately—kitty litter or sawdust will absorb the spill. Be sure to sweep these up as well & dispose of them in the garbage.

2 Wash your car on the grass so that the **water, detergent, and dirt** will be filtered by the soil. Better yet, take your car to a commercial car wash, where the dirty water goes into the sanitary sewer and is sent to the wastewater treatment plant.



3 Grass clippings in the street or on sidewalks should be swept up after each mowing. Grass clippings left in the street or on sidewalks are being washed into the storm

sewers and end up in streams or Sinclair Inlet where they have the potential to cause algae blooms which harm fish and other aquatic organisms.

4 Many household products, including **cleansers, pesticides, weed killers, paints, paint thinners, and solvents** can be taken to the Kitsap County Household Hazardous

Waste (HHW) Collection Facility. Paint brushes used with latex (water-based) paint can be rinsed in the sink. **Latex paint** can go into regular garbage if the paint is dry or the can is empty. To dry out paint if there is less than 2 inches left, open the can in a well-ventilated area and let it dry out or add clay-based kitty litter or instant concrete mix, stir well and let it solidify. **Oil-based paints** and stains are hazardous waste and must not be put in the garbage unless the can is empty.

Empty containers of **household cleansers, pesticides, and weed killer** should be disposed of according to label directions.



For more information about household hazardous waste disposal, go to: www.kitsapgov.com/sw/recycle.asp



5 When walking your pet or in your yard at home, use a bag or a scooper to promptly clean up your **pet's waste**. To keep animal waste from harming the health of humans and our waterways, properly dispose of the waste by picking it up, bagging it, and placing it into the garbage.