

RIVERSTONE PLAT

CHANNELIZATION AND SIGNAGE PLAN

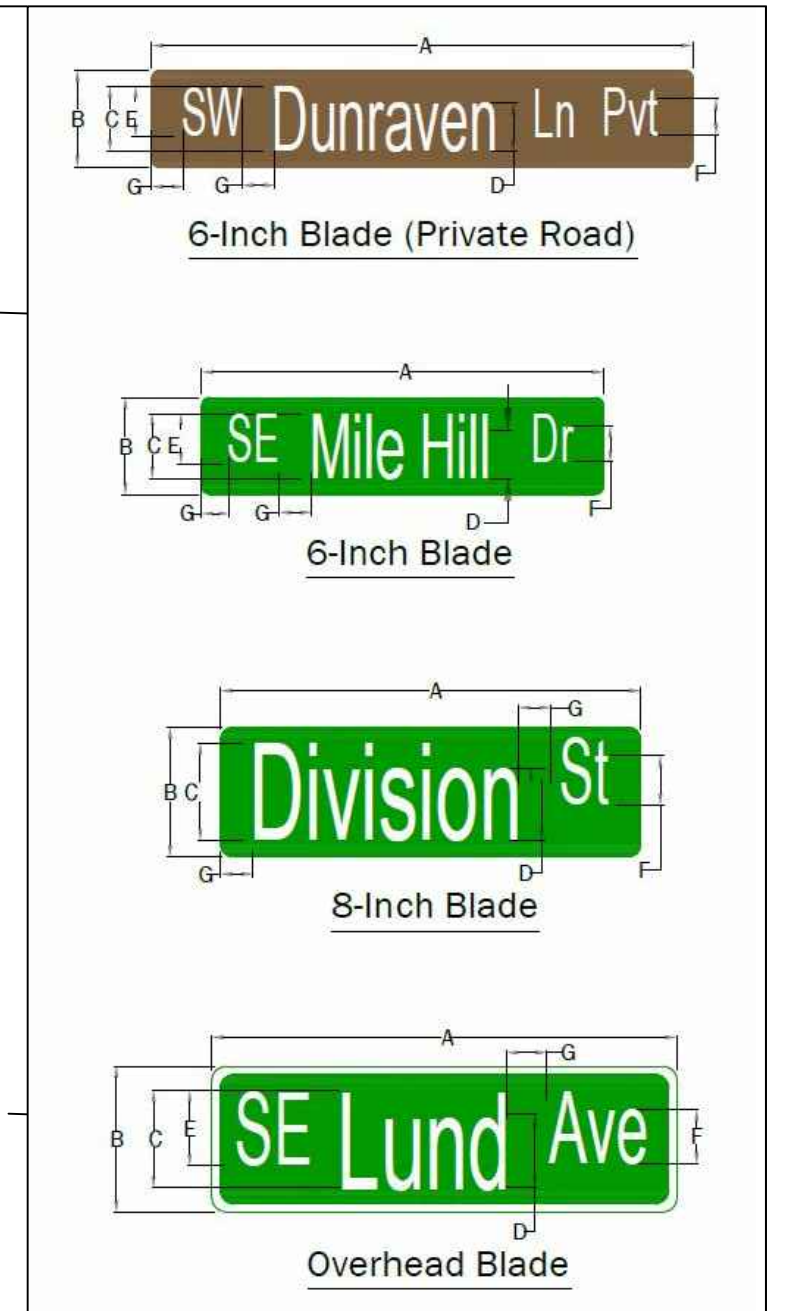
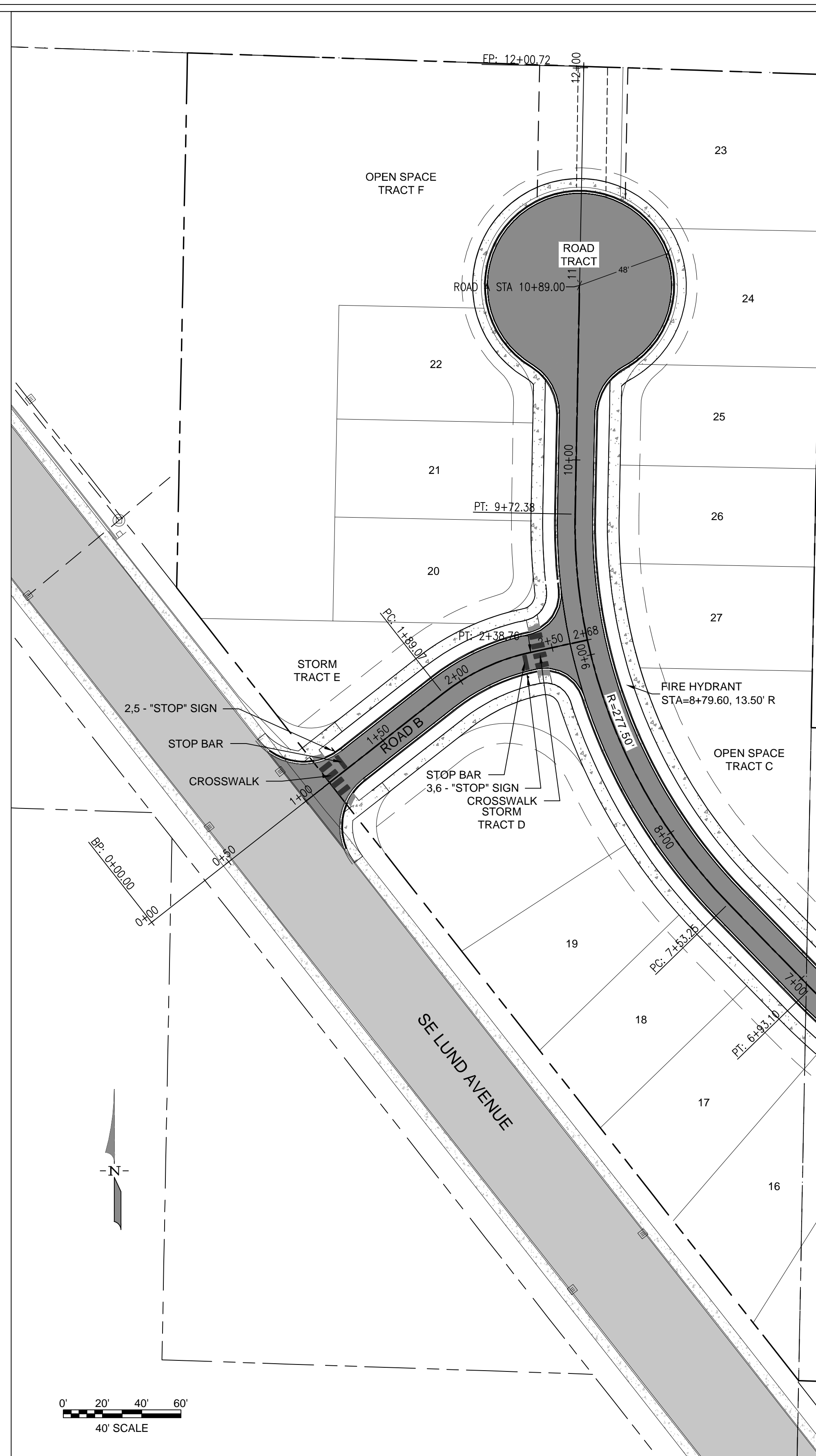
	6-Inch Blade (Private)	6-Inch Blade	8-Inch Blade	12-Inch Blade	Overhead Blade
A	VARIES 48" MAX.	VARIES 48" MAX.	VARIES 48" MAX.	VARIES	VARIES
B	6"	6"	8"	12"	18"
C	4"	4"	6"	8"	12"
D	3"	3"	4.5"	6"	9"
E	3"	3"	3"	6"	9"
F	2.25"	2.25"	3"	4"	6.75"
G	2"	2"	2"	3"	5"

SIGN NO	MUTCD SIGN CODE (DESCRIPTION)	LOCATION	SIGN SIZE		POST	POST LENGTH	CLEARANCE			REMARKS
			X	Y			H1	V	W	
1	R1-1 STOP	ROAD A STA 0+52.93 12.00' LEFT	30"	30"	2-3/8" OD GALV SCHED 40 STEEL	10'	7'			INSTALL POST AND SIGN
2	R1-1 STOP	ROAD B STA 1+27.24 12.00' LEFT	30"	30"	2-3/8" OD GALV SCHED 40 STEEL	10'	7'			INSTALL POST AND SIGN
3	R1-1 STOP	ROAD B STA 2+34.08 12.00' RIGHT	30"	30"	2-3/8" OD GALV SCHED 40 STEEL	10'	7'			INSTALL POST AND SIGN
4	STREET SIGN	ROAD A STA 0+52.93 12.00' LEFT	VARIES	6"	ON TOP OF STOP SIGN POST	10'	7'			INSTALL SIGN
5	STREET SIGN	ROAD B STA 1+27.24 12.00' LEFT	VARIES	6"	ON TOP OF STOP SIGN POST	10'	7'			INSTALL SIGN
6	STREET SIGN	ROAD B STA 2+34.08 12.00' RIGHT	VARIES	6"	ON TOP OF STOP SIGN POST	10'	7'			INSTALL SIGN

- NOTES:
- SIGN SHALL BE SUBMITTED AND APPROVED BY PUBLIC WORKS DIRECTOR OR DESIGNEE PRIOR TO FABRICATION.
 - SIGN SHALL BE MADE FROM 0.125" ALUMINUM AND HAVE AVERY OR 3M HIP (TYPE III/IV) SHEETING.
 - SIGNS SHALL HAVE STANDARD RADIUS CORNERS WITH NO HOLES.
 - SIGNS SHALL BE GREEN BACKGROUND WITH WHITE LETTERS FOR CITY OWNED STREETS.
 - SIGNS SHALL BE BROWN BACKGROUND WITH WHITE LETTERS AND MARKED "PVT" FOR PRIVATE STREETS.
 - SIGNS SHALL NOT HAVE A BORDER UNLESS THEY ARE AN OVERHEAD MOUNTED SIGN.
 - SIGNS SHALL BE DOUBLE SIDED.
 - LETTERING SHALL BE HIGHWAY SERIES C GOTHIC.
 - OVERHEAD MOUNTED SIGNS SHALL HAVE A 1-INCH WHITE BORDER WITH 2" MAX. SPACING TO TEXT FROM BORDER.
 - STREET NAMES SHALL HAVE AN UPPER CASE FIRST LETTER FOLLOWED BY LOWER CASE LETTERS.

RECEIVED
Permit Center
JUL 26, 2021
City of Port Orchard
Community Development

18" WIDE WHITE STOP BARS PER WSDOT M-24.60-04



DESIGNED BY	CTB		
DRAWN BY	PWB		
CHECKED BY	CTB		
SEC	35 TWN 24N R 1E		
SCALE	1"=40'		
REV.	DESCRIPTION	DATE	BY
1	REVISED PER CITY COMMENTS	10/26/2020	CTB
DATE SEALED		7/23/2021	



TITLE: RIVERSTONE PLAT CHANNELIZATION AND SIGNAGE PLAN
CLIENT: ANDERSON MORRISON LLC
1004 SE SPENCER AVE
PORT ORCHARD, WA 98367
PW21-046
PW21-047

WSE WestSound Engineering, Inc
ENGINEERING, PLANNING AND SURVEYING
217 S.W. Wilkins Drive
Phone (360) 876-3770
E-mail: wse@wsengineering.com
Port Orchard, Wa. 98366
Fax (360) 876-0439
http://www.wsengineering.com
JOB No. **2724** SHT **C6.11** OF **34** SHTS

File: X:\Projects\active\2020\2724 - Riverstone Plat\Design\2724-SITE-SDAP.dwg Layout: 5.1.1 Date: 07-23-2021 @ 15:52 Login: User