

THIS DRAWING IS FULL SIZE WHEN 22" x 34" OR IS REDUCED TO HALF-SIZE WHEN 11" x 17"



Kramer, Chin & Mayo, Inc.
 Consulting Engineers, Architects, Applied Scientists
 1917 First Avenue, Seattle, Washington 98101
 Phone (206) 447-5300

Date <i>MAR 83</i>	Designed by <i>WGG</i>
Scale <i>AS NOTED</i>	Drawn by <i>JLF</i>
	Checked by <i>JCM</i>
	Approved by <i>SSL</i>

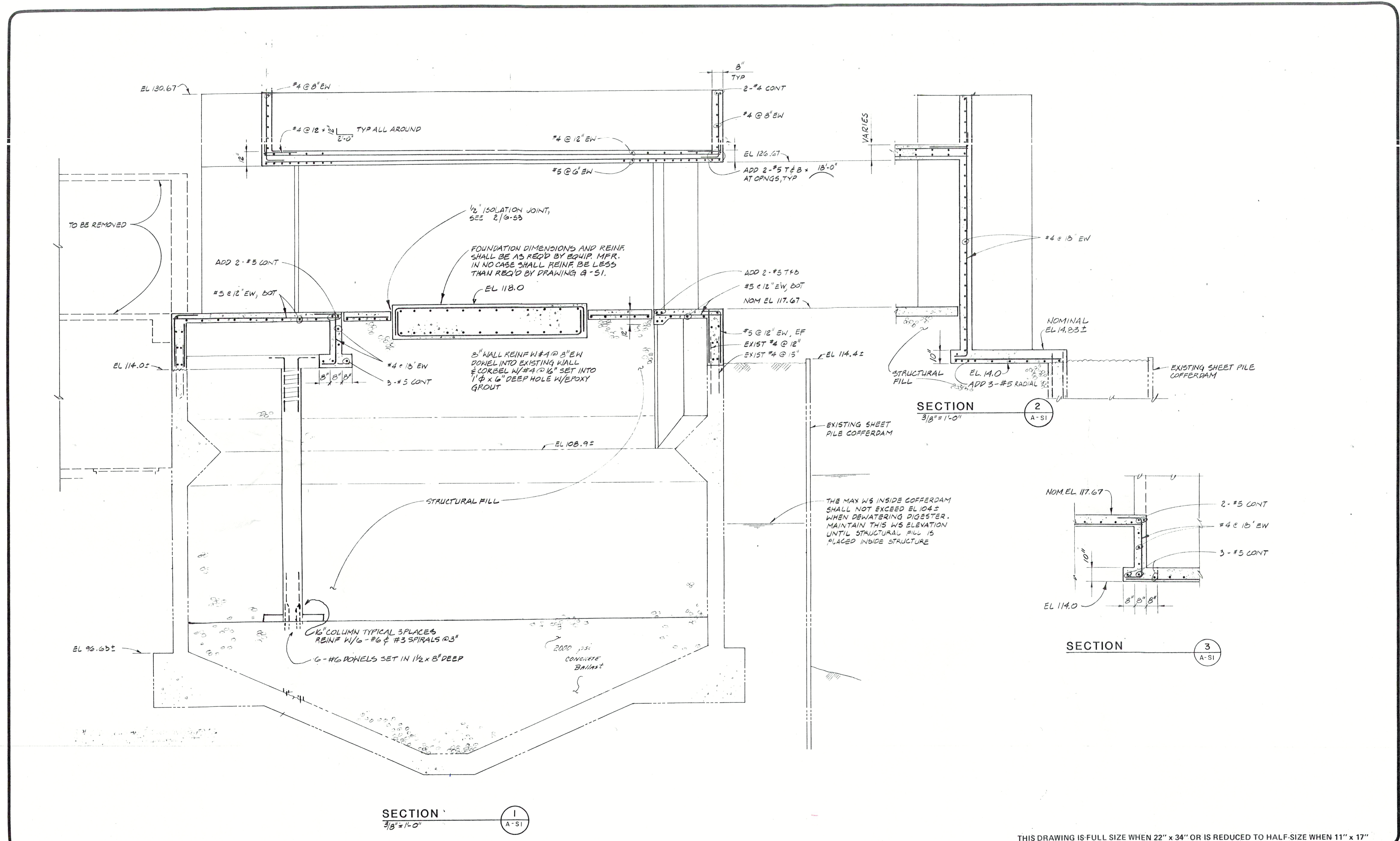


Revisions
AS BUILT

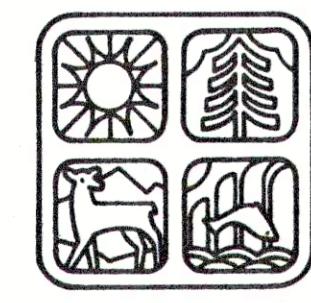
**PORT ORCHARD / KCSD NO.5
 WASTEWATER FACILITIES IMPROVEMENTS**
 PORT ORCHARD, WASH.

SCHEDULE A - MARINA PUMP STATION
CONTROL BUILDING PLANS

Drawing Number
A-S1
 Sheet Number
29 of 144



THIS DRAWING IS FULL SIZE WHEN 22" x 34" OR IS REDUCED TO HALF-SIZE WHEN 11" x 17"



Kramer, Chin & Mayo, Inc.
 Consulting Engineers, Architects, Applied Scientists
 1917 First Avenue, Seattle, Washington 98101
 Phone (206) 447-5300

Date	Designed by	WGG
MAR 83	Drawn by	JLF
Scale	Checked by	SEMI
AS NOTED	Approved by	SSL



Revisions
AS BUILT

**PORT ORCHARD / KCSO NO. 5
 WASTEWATER FACILITIES IMPROVEMENTS**
 PORT ORCHARD, WASH.

SCHEDULE A - MARINA PUMP STATION
CONTROL BUILDING SECTIONS

Drawing Number
A-S2
 Sheet Number
30 of 144