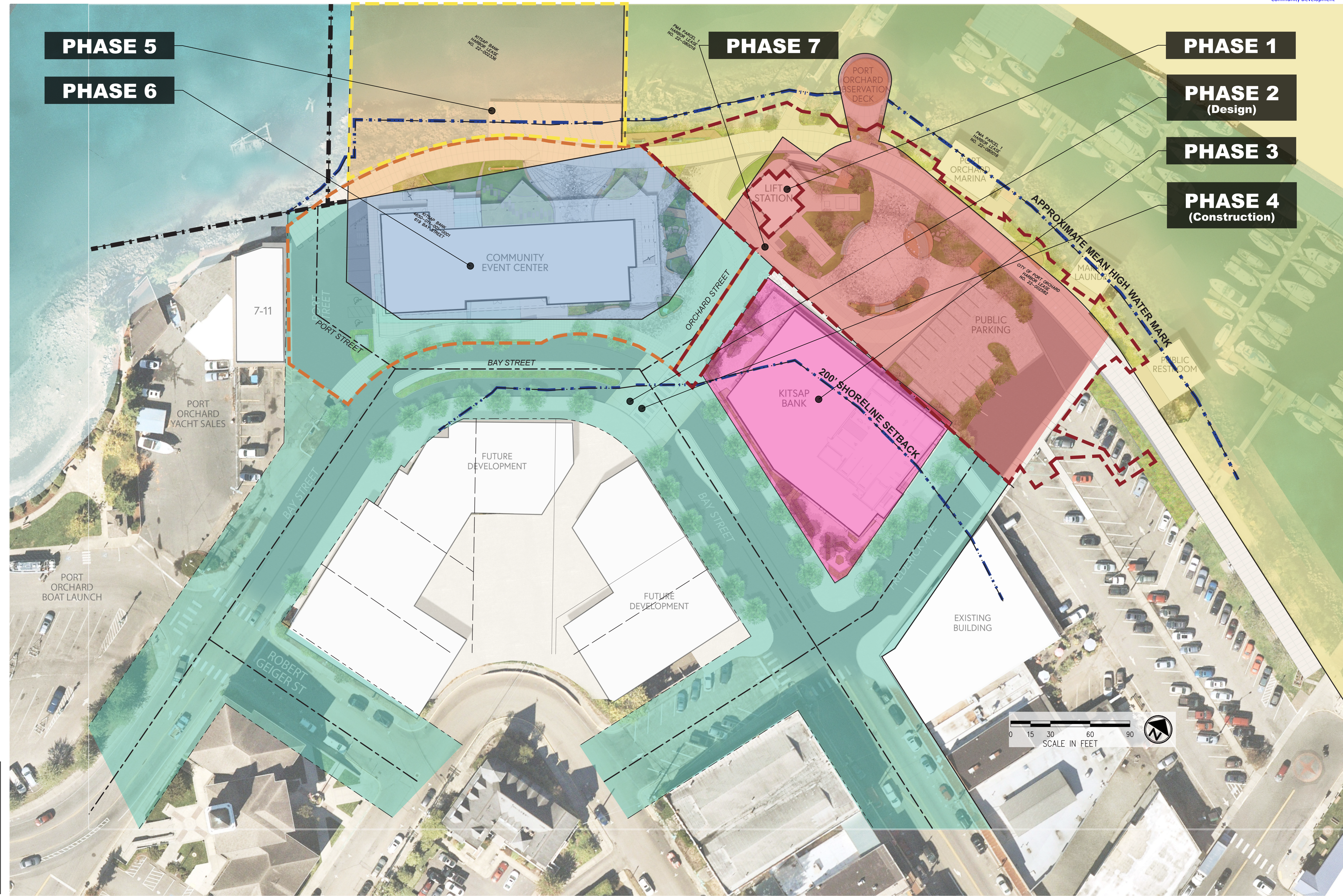


- KEY**
- CITY OF PORT ORCHARD RIGHT-OF-WAY
 - COMMUNITY EVENTS CENTER (CEC) PROPERTY
 - KITSAP BANK PROPERTY
 - KITSAP BANK HARBOR LEASE NO. 22-002336
 - PMA PARCEL 1 (PORT OF BREMERTON) HARBOR LEASE NO. 22-080016
 - CITY OF PORT ORCHARD HARBOR LEASE LINE NO. 22-002582
 - COMMUNITY EVENTS CENTER PROJECT SCOPE BOUNDARY
 - ORCHARD PLAZA PROJECT SCOPE BOUNDARY
 - CEC SHORELINE IMPROVEMENTS SCOPE BOUNDARY
 - DNR LEASE LINE PER ROS AFN 200503180029
 - APPROXIMATE MEAN HIGH WATER MARK/ 200' SHORELINE SETBACK



**CITY OF PORT ORCHARD
EAST DOWNTOWN
WATERFRONT
DEVELOPMENT
PHASING MAP**