

WESTCHESTER COUNTY AIRPORT MASTER PLAN 'ACTION ALERT' MEETING

Hosted by Village of Rye Brook &
Rye Brook's Airport Master Plan Task Force Members

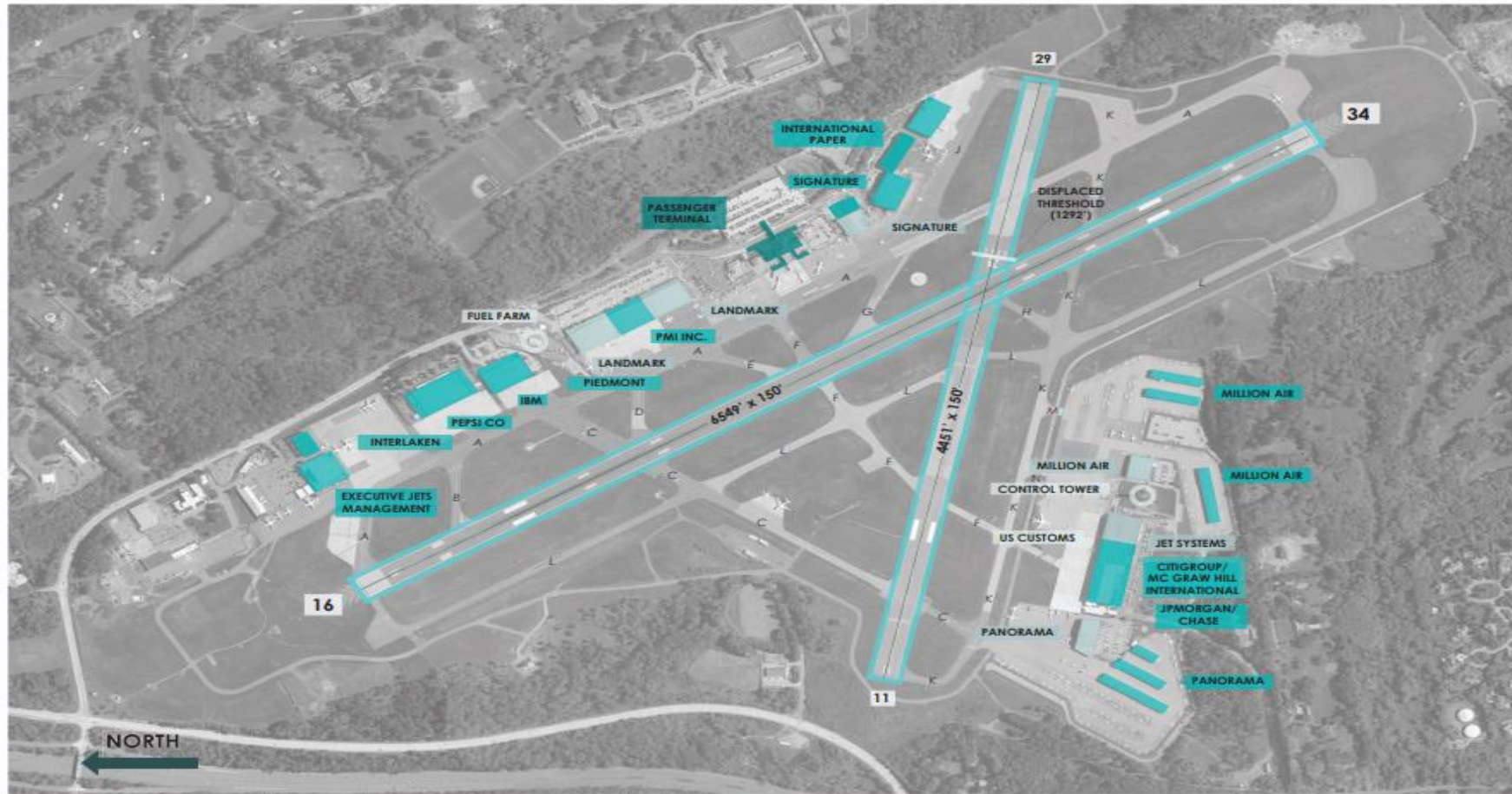
May 23, 2022

AGENDA

1. Welcome (*Mayor Jason Klein*)
2. Meeting goals and agenda (*Trustee & Task Force Chair Stephanie Fischer*)
3. Overview of Westchester County Airport (*RBAAC Member Paul Noto*)
4. Overview of Master Plan Supplement Process (*RBAAC Chair Peter Schlactus*)
5. Task Force Recommendations (*Trustee Stephanie Fischer*)
6. Q&A (*Task Force & RB Airport Advisory Council Members*)

INTRODUCTION TO WESTCHESTER COUNTY AIRPORT

1. EXISTING FACILITIES



LEGEND

- TERMINAL BUILDING
- HANGARS
- RUNWAYS
- FIXED BASED OPERATOR
- OTHER FACILITIES

TYPE OF TRAFFIC

- AIRLINES
- CORPORATE
- LIGHT GENERAL AVIATION
- GOVERNMENT

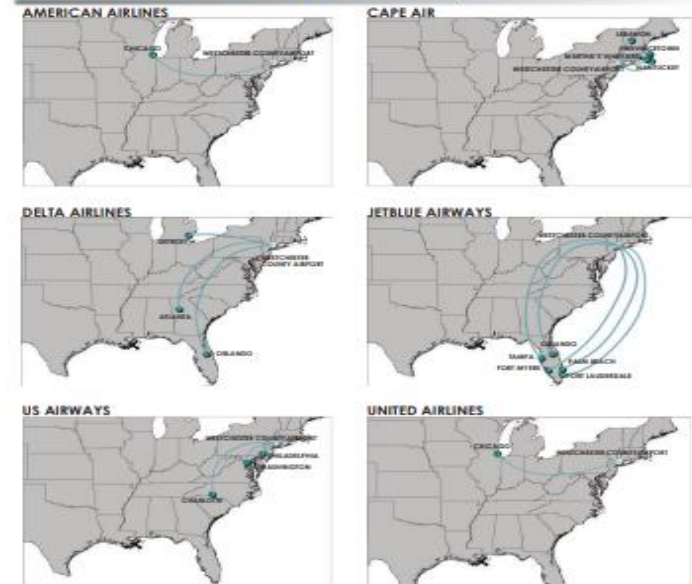
AIRPORT ENTITIES

<p>FIXED BASED OPERATORS:</p> <ul style="list-style-type: none"> • Landmark • Signature • Million Air • Panorama • Jet Systems 	<p>PRIME TENANTS:</p> <ul style="list-style-type: none"> • PMI INC., Altria • IBM • Pepsi Co. • JPMorgan/Chase • Citigroup/McGrawHill 	<ul style="list-style-type: none"> • Interlaken • US CUSTOMS • FUEL FARM • CONTROL TOWER • TERMINAL BUILDING
------------------------------------------------------------------------------------------------------------------------------------------------------------------------------------------	-------------------------------------------------------------------------------------------------------------------------------------------------------------------------------------------------	-----------------------------------------------------------------------------------------------------------------------------------------------------------------

GLOSSARY

<p>Airlines: The airline service of an Airport, that involves operating aircraft for hire to transport passengers.</p>	<p>Corporate Aviation: The use of aircraft by companies for the transport of passengers or goods for business purposes. Aircraft used in corporate aviation is generally not available for public hire.</p>	<p>Light General Aviation: All civil aviation operations other than scheduled passenger airlines and non-scheduled air transport operations. Examples: private flying, air ambulance, police aviation, aerial firefighting, skydiving, flight school.</p>	<p>Government Aviation: A commercial business authorized by an airport to operate on the airport and provide aeronautical services such as fueling, airport storage, tie-down and parking, aircraft rental, aircraft maintenance.</p>	<p>Fixed Based Operator: A commercial business authorized by an airport to operate on the airport and provide aeronautical services such as fueling, airport storage, tie-down and parking, aircraft rental, aircraft maintenance.</p>	<p>Based Aircraft: An aircraft that is operational & air worthy, which is typically based at the facility for a majority of the year.</p>
-----------------------------------------------------------------------------------------------------------------------------------	------------------------------------------------------------------------------------------------------------------------------------------------------------------------------------------------------------------------	----------------------------------------------------------------------------------------------------------------------------------------------------------------------------------------------------------------------------------------------------------------------	--------------------------------------------------------------------------------------------------------------------------------------------------------------------------------------------------------------------------------------------------	---------------------------------------------------------------------------------------------------------------------------------------------------------------------------------------------------------------------------------------------------	----------------------------------------------------------------------------------------------------------------------------------------------------------

2. AIRLINE DESTINATIONS (2013)



Source: Westchester County Airport

3. OPERATIONS SUMMARY (2012)

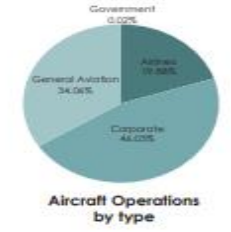
- Annual Passengers = 1.9 million
- Annual Operations = 161,109
- Average Daily Operations = 441
- Average Peak Hour Operations = 33

Operation Comparison

JFK International	402,569
LaGuardia	374,309
Westchester County	161,109
Teterboro	150,427

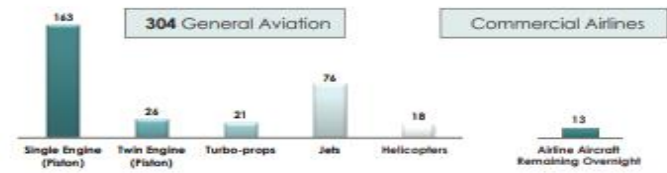
Operations (2012)

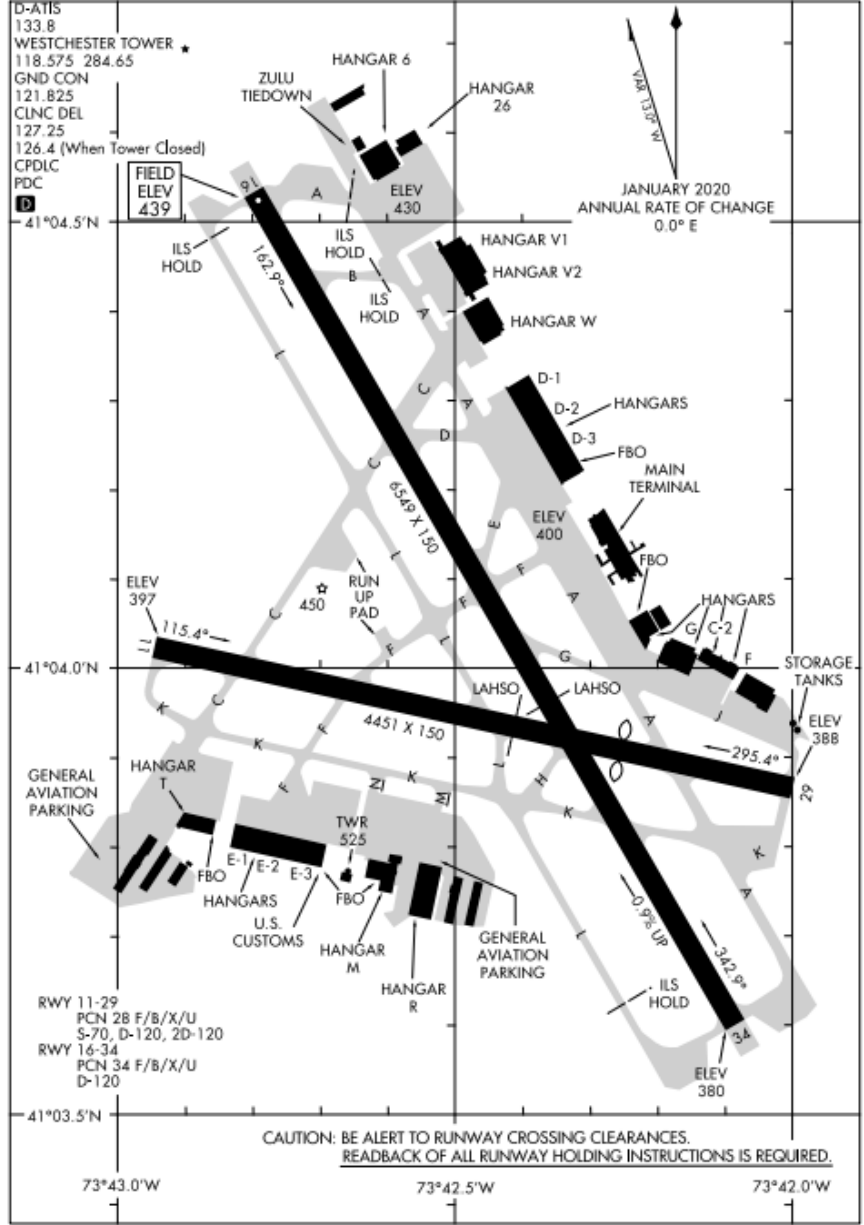
Airlines	32,032	19.88%
Corporate	74,166	46.03%
General Aviation	54,877	34.06%
Government	34	0.02%



Sources:
 • Passif
 • eCater
 • ACAIS, FAA
 • Airport Monitor, Westchester County Airport

AIRCRAFT BASED AT THE AIRPORT





OVERVIEW OF KEY ITEMS:

Private management company (AvPorts) operates on County property.
FAA regulatory oversight (airspace & flight traffic)

15% of flights are Commercial (main terminal/HPN). Approx. 1.0M-1.5M passenger per year.
85% are private planes, corporate planes, charter planes, etc. (private hangers).

6 Gates at Terminal. Max. of 4 aircraft can use Terminal Ramp at any time.

120,000 lb. weight restriction. 120,000-180,000 lbs. needs permission. No aircraft over 180,000 lbs.

Terminal Use Agreement:

- Terminal space limited to 240 passengers per ½ hour (enplaning & deplaning) except to following 27 days:
 - 5 days prior to Christmas to 4 days after New Years (17 days)
 - 3 days before & after Presidents Day (7 days)
 - 5 days before & after Easter (11 days)
 - 3 days before & after Memorial Day (7 days)
 - 3 days before & after July 4th (7 days)
 - 3 days before & after Labor Day (7 days)
 - 5 days before & after Thanksgiving (11 days)
- VOLUNTARY flight restrictions Midnight to 6:30a.m.

OVERVIEW OF KEY ITEMS (CONTINUED):

Key Terms:

- Commercial Airlines
- Corporate Aviation
- Light General Aviation
- Government Aviation
- Fixed based Operator
- Based Aircraft

2013: 13 Commercial airlines & 304 General Aviation airlines.

OCTOBER 7, 2003 WESTCHESTER COUNTY “NO EXPANSION OF THE AIRPORT” POLICY

Resolution reaffirming the Westchester County Board of Legislators’ commitment to the community to preserve current limitations on County Airport facilities.

Be It Resolved, that the Westchester County Board of Legislators **reaffirms its commitment to the community to preserve current limitations on Airport facilities**; and

Be It Further Resolved, that the policy of the Westchester County Board of Legislators is to **limit the development** of the Westchester County Airport **to its current physical capacity**, including the **weight-bearing capacities of airport pavements, and the site footprint**, and

Be It Further Resolved, that the policy of the Westchester County Board of Legislators is and continues to be one of supporting **no increase in the total capacity of the Airport’s runways, taxiways, ramps, gates, hangars, terminal, motor vehicle parking areas, or access roads** in order that we may **protect our fragile environment**, including the drinking water for almost nine million people, **from the noise, air and water pollution** that any such expansion would generate, and

Be It Further Resolved, that County staff is directed to ensure that the Federal Aviation Administration, the County’s Federal and State Delegations, stakeholders and all other pertinent parties are aware of County Policy so that the intent of this honorable Board may be widely known.

MASTER PLAN SUPPLEMENT UPDATE PROCESS

Master Plan History:

1980 Master Plan

1987 Master Plan Update

2017 Master Plan Update

2022 Master Plan Supplement to 2017 (Currently)

Purpose of Master Plan: To provide a plan to guide future decisions regarding the Airport.

Purpose of 2022 Master Plan Supplement: The Supplement will focus on analysis of the Airport with respect to the physical condition of the Airport property, buildings and infrastructure, additional analysis of noise and environmental impacts and the local and regional economic impact of the airport.

WESTCHESTER COUNTY TOWN HALL MEETINGS ON AIRPORT MASTER PLAN SUPPLEMENT

IMPORTANT: PLEASE GO TO SHOW INTEREST!

Westchester County Town Hall meetings:

Purpose: To seek public input on the development of an **Airport Master Plan Supplement**. The Supplement will focus on analysis of the Airport with respect to the physical condition of the Airport property, buildings and infrastructure, additional analysis of noise and environmental impacts and the local and regional economic impact of the airport.

- **Tuesday, May 24 at 6 p.m.**
Elisabeth Haub School of Law at Pace University
78 N. Broadway, White Plains, NY 10603
- **Thursday, June 2 at 6 p.m.**
Manhattanville College
2900 Purchase St, Purchase, NY 10577
- **Thursday, June 9 at 6 p.m.**
Mercy College
555 Broadway, Dobbs Ferry, NY 10522

RYE BROOK TASK FORCE RECOMMENDATIONS

Primary Issues of Importance:

1. Include clear language preserving the County's longstanding policy against **airport expansion**;
2. Strengthen the voluntary **overnight 'curfew'** that is too often not followed by aircraft;
3. **Strengthen environmental strategies to address noise, air emissions, and discharges** of de-icing fluids and pollutants into the Blind Brook and Kensico Reservoir (from which the Rye Brook and other county and NYC residents obtain drinking water);
4. Update the **main passenger terminal's** technology, conveniences, and security, but only in conjunction with long-term extensions of airlines' Terminal Use Agreements.

Other Issues of Concern:

- **Safeguards** against modifying airport facilities in ways that could enable more private and corporate (i.e. non-commercial) flights;
- Adoption of **sustainable** and unleaded fuels, solar installations on buildings and open land, and safe electric aviation;
- Prioritizing Westchester-based businesses and pilots for the airport's limited **hangar facilities**;

Q & A

For More Information:

Visit www.ryebrook.org/airport

Send in questions any time: airportmasterplan@ryebrook.org