



Homelessness Response Update & Sanctioned Camping Area: Community Webinar

October 3, 2024

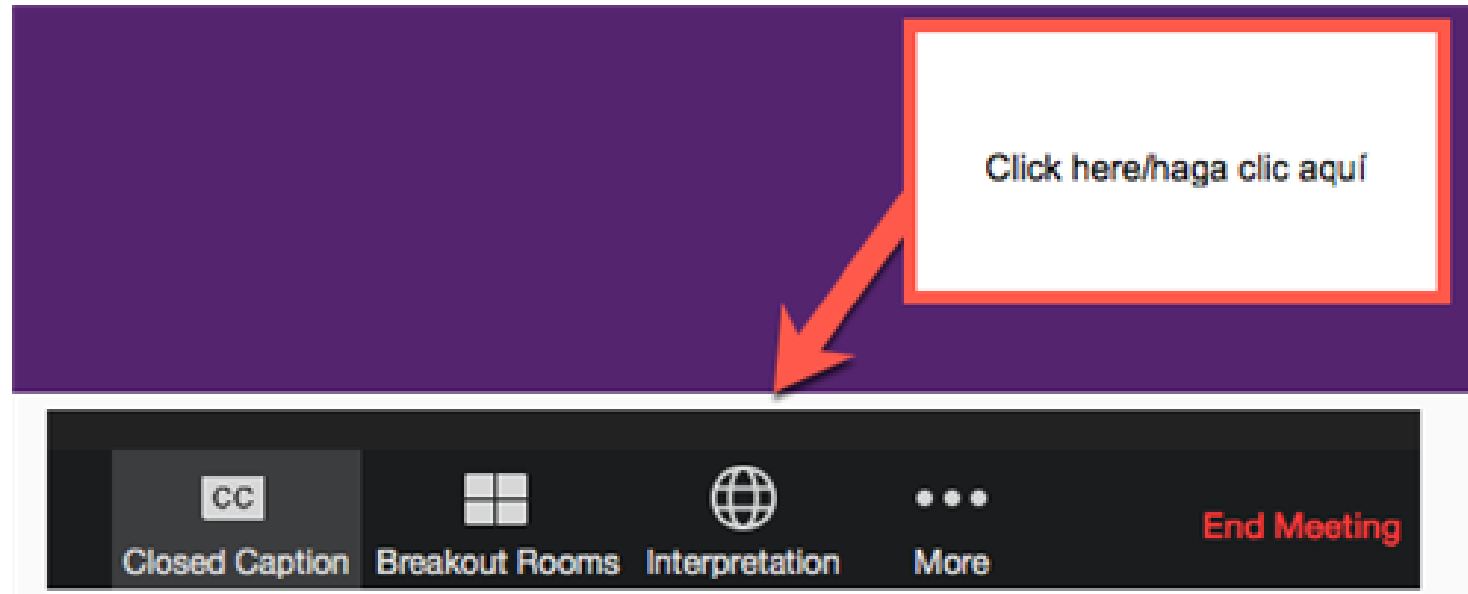


SAN RAFAEL

THE CITY WITH A MISSION

Translation Available/ Traducción disponible

- Spanish language interpretation available on the Spanish Channel.
- Interpretación en español disponible en el Canal de Español.



Zoom Overview



Interpretation

This webinar is being interpreted into Spanish.



Recording

The webinar is being recorded and will be available on the City website.



Questions

The City will not be answering questions live but we will be answering ones we have already received. You can submit questions for our forthcoming FAQ.

Submitting Questions for FAQ

If you have questions, please submit via the Q&A function.

- The City will compile these questions and post responses on the city website: cityofsanrafael.org/homelessness
- You can submit questions after this webinar to EndHomelessness@cityofsanrafael.org

Questions submitted by **Monday, October 7** will be included in the FAQ.

Welcome and Introduction



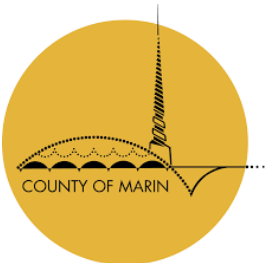
Kate Colin
Mayor,
San Rafael

Rachel Kertz
Council member
District 4

Cristine Alilovich
City Manager

John Stefanski
Assistant City
Manager

Mel Burnette
Housing &
Homelessness
Analyst



Mary Sackett
County
Supervisor

Gary Naja-Riese
Director of
Homelessness
& Coordinated Care

Tonight's Agenda

- City-County Collaboration and Partnerships
- 2024 Point-In-Time Count
- Overview of County of Marin Roles/Responsibilities
- Overview of New City Camping Regulations
- Overview of Sanctioned Camping Program
- Introduction of Homelessness Solutions Working Group
- Questions and Answers

Tackling Homelessness: A Collaborative Approach

Homelessness is a complex issue that no single agency can resolve alone.

- In San Rafael, a partnership between the City, County, and community-based organizations and social service providers is key to making progress.
- The City and County are committed to strengthening this collaboration, creating a formalized partnership that enhances interagency cooperation to better address the needs of those experiencing homelessness.

City-County Partnerships

High Utilization of City Services Program

- Caseloads assigned by cities; 68 total slots.

State/County matching funds

\$1M to San Rafael, Sausalito, and Novato

- To improve conditions in encampments, construct new housing and support connections to housing.

Marin County Council of Mayors & Councilmembers - Homelessness Fund

- Providing showers in Fairfax, Novato, San Rafael, and West Marin

50/50 Matching Program

- County will match city initiatives to address homelessness

Homelessness In Marin

Marin County – 2024 Point in Time Count Results

1,090

Homeless
individuals

788

Unsheltered

217

Chronically
homeless

3%

Decrease from
2022 PIT Count

San Rafael – 2024 Point in Time Count Results

326

Homeless
individuals

264

Unsheltered

62

Sheltered

6%

Decrease from
2022 PIT Count

Homelessness In Marin

Priority Populations

24%

reduction in
Chronic
Homelessness

12%

reduction in
homeless
families

32%

reduction in
Veteran
homelessness

12%

reduction in
youth
homelessness

County of Marin Continuum of Care



Identify homeless individuals and refer to [Coordinated Entry](#)

(415) 473-HOME

HSHHome@marincounty.gov



Coordinated Entry staff from County and Community benefit organizations [enroll and assess](#)



Outreach teams provide services and support [in the field](#)



Rapid Rehousing short term financial and service supports for individuals with low needs.



Housing Focused Shelter & Transitional Housing



Permanent Supportive Housing long term services, Section 8 vouchers for individuals with long periods of homelessness and a disability

County of Marin -Coordinated Care Initiative

1. Collaboration between **all Divisions** at Health & Human Services (HHS); (Social Services, Public Health, and Behavioral Health and Recovery Services)
2. Connecting homeless individuals with array of **entitlements, services, and supports** within all of HHS.
3. Services/supports are provided to individuals **while homeless and after they are housed** to ensure long term stability and prevent return to homelessness.

Permanent Supportive Housing

144% increase in beds since 2016

Currently 553 in scattered site locations and 266 in single site locations.

Homekey

61 beds opened at the beginning of 2024

64 additional beds coming online in fiscal year 2024-25.

Marin Housing Authority – Landlord Partnership

Provides program and financial supports to landlords to accept clients.

Homelessness In Marin and San Rafael

County success in housing individuals

- 804 chronically homeless individuals housed since 2017.
- 94% of those housed remain housed due to support services and rental subsidies.
- 116 veterans housed since 2017.
- 234 families housed since 2017

Shelter success

- 239 shelter beds / 108 transitional housing beds
- Over 2,000 unique clients served in shelter since 2017

City actions to resolve homelessness

*Since 2017, City in partnership with the County and other service providers have successfully housed over 380 of most at-risk individuals facing long-term homelessness in **San Rafael** by:*

- Collaborating with service providers to get individuals experiencing homelessness into case management and permanent supportive housing
- Funding new affordable housing
 - \$1.3M for 3301 Kerner Blvd (40 units of permanent supportive housing)
 - \$7.2M Homekey 1 award; \$2.2M in other sources secured by Eden Housing
 - \$20M County Commitments to Operations for 20 years
- Funding the SAFE Team to respond to people in crisis
 - Responded to 3,099 calls for service in the 2023-24 Fiscal Year

Past Enforcement

- **Fall/Winter 2023**
 - Fire Code Enforcement on Wooden Pallet Structures
 - Lindero Street Camping Prohibition
- **Spring/Summer 2024**
 - Illegal Structure Enforcement
 - 50+ structures noticed and removed.
 - 31+ tons of materials and debris cleaned up
- **Support provided:**
 - Replacement tents were given to individuals displaced by structure removals.
 - City stores personal property for up to 90 days as per City guidelines



Francisco Blvd. West – Before & After



Andersen Drive – Before and After



Mahon Creek Path Before & After



New Camping Regulations

Campsite Size Maximums

- 1 person – 200 sq. ft.
- 2-4 people – 400 sq. ft.

Campsite Setbacks

- 10' surrounding campsites, from other campsites, utility infrastructure, and private property lines
- 5' from roadway pavement
- 250' of schools
- 100' of playgrounds

Unpermitted Structures & Building Materials

- Expressly prohibited

Camping Prohibitions

Camping Prohibited

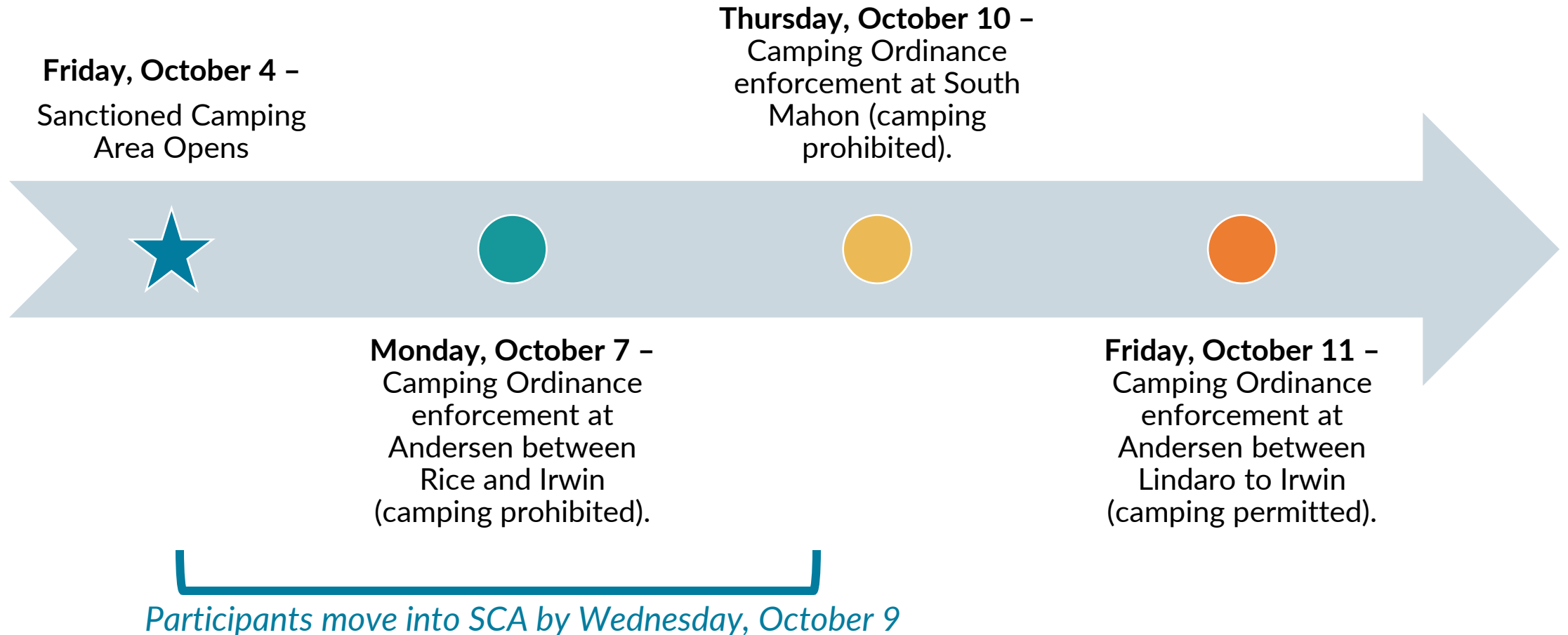
- Designated Properties: Albert Park, Boyd Park, Falkirk Cultural Center, Lindaro Street (portion), South Mahon Path
- Other Properties: open space properties, parking garages, public facilities, public right-of-way and sidewalks (which block access).

Ongoing Enforcement

Violations & Enforcement

- Camping in prohibited area – immediate removal
- Clearance and Setback Violation – 48 hours to cure violation;
 - Immediate removal if exigent circumstances exist.
- Unpermitted Structures -- 48 hours to remove before City abatement action.
- City has other law enforcement avenues to address criminal activities

Implementation & Enforcement Plan



Why a Sanctioned Camping Program?



Limited Shelter & Housing: Marin County lacks sufficient shelter space and affordable housing.



Current Situation: Individuals experiencing homelessness often camp on public property due to lack of alternatives.



Prior Successes: City's SSA program successfully housed over 70% of participants.



Broader Benefits: The program will enhance stability, order and safety in the area.

Encampment Resolution Fund Round 3 (ERF-3)

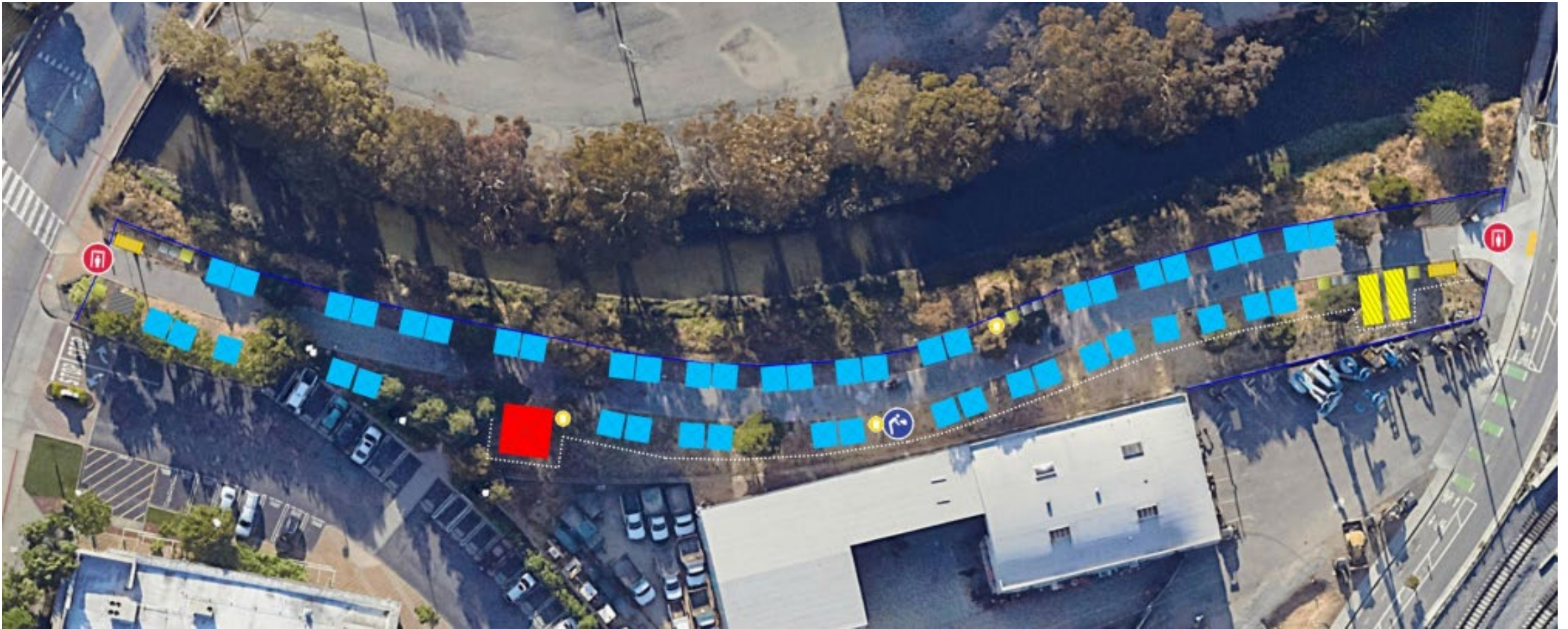
The City of San Rafael and the County of Marin were awarded \$5,999,241 to address the Mahon Creek Area Encampment.

- The grant supports the sanctioned camping area program, which connects encampment residents to case management, permanent housing, rapid re-housing subsidies, and supportive services to end homelessness.

Proposed ERF-3 Program includes:

- Partnership with the County of Marin's Department of Health and Human Services (HHS) to hire;
 - One full-time outreach worker
 - Three full-time Housing-Based Case Managers
- Development of a sanctioned camping area and interim shelter program.

Sanctioned Camping Area Portion of Mahon Path



Sanctioned Camping Area Elements

Sanctioned Camping Area will serve as a low-barrier, housing focused safe sleeping site.

Development and Operations include:

- Installation of new gates, fencing, and controlled access points
- 24/7 security personnel, provided by Defense Block Security
- Program services and janitorial staff, provided by FS Global
- Dedicated housing case management and outreach staff, contracted by Marin County HHS
- Regularly serviced portable restrooms, garbage pickup, and weekly shower service



Photos of Sanctioned Camping Area

Why along the Mahon Creek Path?

- The State ERF-3 grant requires that funds are used to provide alternative shelter in the general proximity of the existing unsanctioned encampment area.
- Service providers recommend that the City provide a site within walking distance to food access and additional services.
- The City does not own land elsewhere suitable for this type of program.



FS Global – Site Program Management Services



Kadyn Schumann
Chief Executive Officer

Max Morell-Foege
Program Director

Defense Block Security – 24/7 Security Services



Fred Peña
Chief Executive Officer

Denise Little
Director of Security

Phase 2: Interim Shelter

- ERF-3 Grant contemplates the development of a new interim shelter or tiny home village.
- After over a year of searching, site selection process continues; no viable sites after inquiring with over 20 property owners and reviewing 5 City-owned parcels.
- Once a viable site is identified, City will work through a public process to ensure members of the public have an opportunity to provide feedback on the proposed program.



Frequently Asked Questions

- What happens to the people who are not in the sanctioned camping area?
- What mechanism has the City set up to receive and address complaints from the public about the camp?
- What is the process for reporting incidents related to encampments, including illegal activities and disruptive behavior, and how is this information acted upon?

Frequently Asked Questions

- What is the City doing to address the encampments along Andersen Drive? What will the City do to ensure encampments do not continue to grow.
- Why are all resources being diverted to permanent supportive housing projects without expanding available shelter beds to get people off the street now?
- Can the City get more housing vouchers for homeless residents?



Communication Plan

- **Website:**
 - Visit our dedicated webpage for up-to-date information on the Sanctioned Camp, including services available and ongoing improvements.
- **Social Media ([Facebook](#), [Instagram](#), [Twitter](#)):**
 - Follow us on social media for the latest updates, stories, and photos from the camp. Stay connected with real-time information and key announcements.
- **Story Map:**
 - Explore our [interactive story map](#), featuring details about the camp's progress, from its creation to where we are today.
- **Homelessness Newsletter:**
 - Sign up for our newsletter to receive regular updates straight to your inbox, including important developments and upcoming community events related to the camp.
- **Outreach Teams:**
 - Outreach is led by City staff with support from community partners to reach eligible individuals. Staff from the Downtown Streets Team, St Vincent de Paul, CARE Team, and Ritter Center are on the ground regularly, engaging with community members, providing support, and offering firsthand updates.



Homelessness Solutions Working Group

- The City is establishing a new community working group, open to San Rafael residents, and/or business/property owners, to explore ongoing challenges and potential solutions.
- Meetings held on:
 - November 12th
 - January 14th
 - March 11th
 - *All meetings open to the public.*

If you're interested in expressing interest in participating, please visit:

www.cityofsanrafael.org/homelessness-solutions-working-group/



<https://tinyurl.com/3mx69j5c>

City Contacts

- Report issues/complaints with the Camping Ordinance to City.Manager@Cityofsanrafael.org
- Report illegal activities to SRPD at 415-485-3000
- Call 415-458-SAFE (7233) - an emergency dispatcher will answer and determine if your situation requires the SAFE Team, first responders such as police, fire, or paramedics, or a combination of both.



Thank you!



SAN RAFAEL

THE CITY WITH A MISSION