

ENGINEERING DIVISIONS IN DPW:

- 1 CAPITAL IMPROVEMENT PROGRAM
- 2 DEVELOPMENT ENGINEERING
- 3 TRAFFIC ENGINEERING

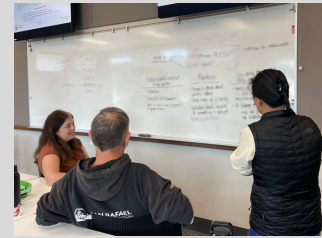
In partnership with DPW's Administrative Services and Operations and Maintenance teams, the Engineering Team tackles a wide breadth of work to maintain and enhance the City's assets and infrastructure. Our work ranges from managing daily traffic signal system operations to multi-million dollar roadway rehabilitation and safety projects. To learn more about Public Works activities, projects and resources, visit the DPW website:

cityofsanrafael.org/pw



See an issue or want to make a suggestion? Let us know on **SeeClickFix**.

Go to seeclickfix.com/san-rafael or find it on the City website.



DEPARTMENT OF PUBLIC WORKS



SAN RAFAEL
THE CITY WITH A MISSION

ENGINEERING

CAPITAL IMPROVEMENT PROGRAM (CIP)

The CIP is a comprehensive three-year plan used to guide the City's decision making process for construction, repair, and replacement of City assets including, but not limited to:



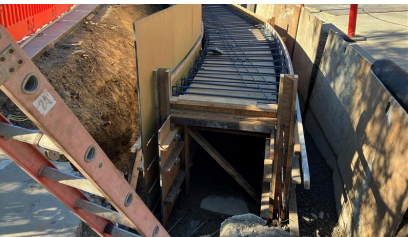
City Buildings and Facilities

Fire Station 54, completed 2024



Parks

Pickleweed Park and Field Enhancement, completed 2025



Storm Drains

B Street Culvert, completed 2024



Transportation

Grand Ave Cycle Track, completed 2024

DEVELOPMENT ENGINEERING

The Development Engineering Division collaborates with other departments to provide technical review on permitting and mapping documents to ensure all projects conform with City and regulatory agency standards.

DPW Permits review and process requests to work within the City's public rights-of-way/easements, storm drain system, and certain bodies of water.

- Encroachment Permits
- Grading Permits
- Transportation Permits
- Watercourse and Tideland Permits

*Meet our DPW inspector, Matt!
He conducts field inspections of various projects to verify compliance.*



To apply for a permit go to
cityofsanrafaelca.portal.opengov.com



TRAFFIC ENGINEERING

The Traffic Engineering Division is responsible for establishing and operating a safe and efficient network for all modes of transportation throughout the City.



- Bicycle and pedestrian facilities
- City streets and crosswalks
- Roadway striping and markings
- Signalized intersections
- Streetlights
- Traffic control devices